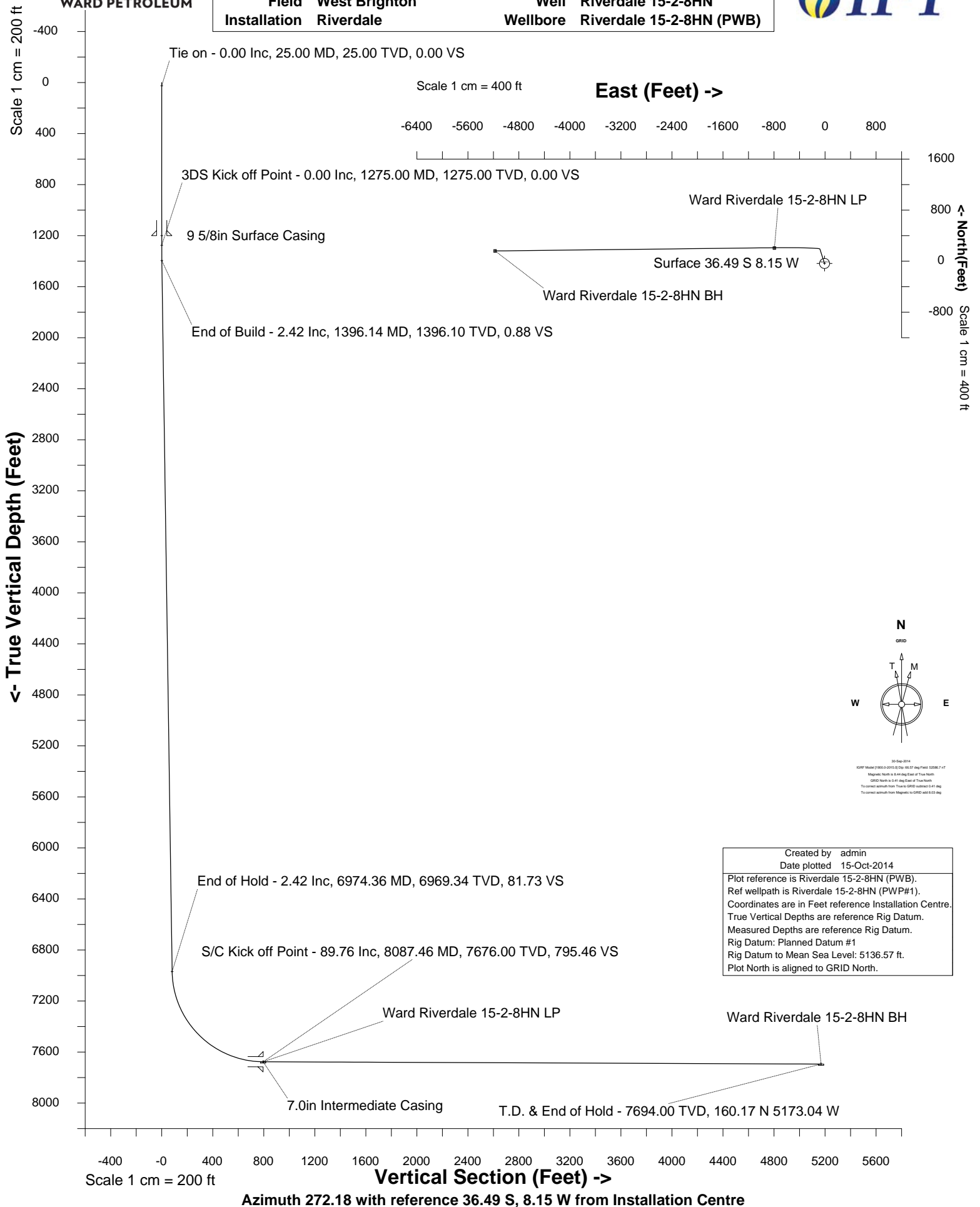




WARD PETROLEUM

WARD PETROLEUM

Location	ADAMS COUNTY, CO	Slot	Slot #13
Field	West Brighton	Well	Riverdale 15-2-8HN
Installation	Riverdale	Wellbore	Riverdale 15-2-8HN (PWB)





WARD PETROLEUM

INTEGRATED PETROLEUM TECHNOLOGIES, INC
SYSDRILL
Well Design Combined Report
Wellbore: Riverdale 15-2-8HN (PWB)



Wellhead Details

Name	Northing	Easting	Latitude	Longitude	North	East	Elevation Above Inst.
Slot #13	1230018.4382	3178199.8681	39.96303000	-104.86426000	36.49S	8.15W	0.41

Declination

Date	Source	Time
30-Sep-2014	IGRF Model [1900.0-2015.0]	10:30

Site Details

Name	Northing	Easting	Coord System Name	North Alignment
Riverdale	1230054.9248	3178208.0159	CO83-NF on NORTH AMERICAN DATUM 1983 datum	Grid

Summary Wellpath

MD[ft]	Inc[deg]	Azi[deg]	TVD[ft]	North[ft]	East[ft]	Dogleg [deg/100ft]	Vertical Section[ft]	Northing	Easting
25.00	0.00	0.000	25.00	0.00N	0.00E		0.00	1230018.44	3178199.87
12466.05	89.76	269.340	7694.00	196.65N	5164.89W	==>	5168.63	1230215.09	3173035.15

Interpolated Wellpath

MD[ft]	Inc[deg]	Azi[deg]	TVD[ft]	North[ft]	East[ft]	Dogleg [deg/100ft]	Vertical Section[ft]	Northing	Easting
0.00	0.00	0.000	0.00	0.00N	0.00E		0.00	1230018.44	3178199.87
25.00	0.00	0.000	25.00	0.00N	0.00E	==>	0.00	1230018.44	3178199.87
100.00	0.00	0.000	100.00	0.00N	0.00E	==>	0.00	1230018.44	3178199.87
200.00	0.00	0.000	200.00	0.00N	0.00E	==>	0.00	1230018.44	3178199.87
300.00	0.00	0.000	300.00	0.00N	0.00E	==>	0.00	1230018.44	3178199.87
400.00	0.00	0.000	400.00	0.00N	0.00E	==>	0.00	1230018.44	3178199.87
500.00	0.00	0.000	500.00	0.00N	0.00E	==>	0.00	1230018.44	3178199.87
600.00	0.00	0.000	600.00	0.00N	0.00E	==>	0.00	1230018.44	3178199.87
700.00	0.00	0.000	700.00	0.00N	0.00E	==>	0.00	1230018.44	3178199.87
800.00	0.00	0.000	800.00	0.00N	0.00E	==>	0.00	1230018.44	3178199.87
900.00	0.00	0.000	900.00	0.00N	0.00E	==>	0.00	1230018.44	3178199.87
1000.00	0.00	0.000	1000.00	0.00N	0.00E	==>	0.00	1230018.44	3178199.87
1100.00	0.00	0.000	1100.00	0.00N	0.00E	==>	0.00	1230018.44	3178199.87
1200.00	0.00	0.000	1200.00	0.00N	0.00E	==>	0.00	1230018.44	3178199.87
1250.00	0.00	0.000	1250.00	0.00N	0.00E	==>	0.00	1230018.44	3178199.87
1350.00	1.50	342.130	1349.99	0.93N	0.30W	2.00	0.34	1230019.37	3178199.57
1400.00	2.42	342.130	1399.96	2.59N	0.84W	==>	0.93	1230021.03	3178199.03
1500.00	2.42	342.130	1499.87	6.62N	2.13W	==>	2.38	1230025.05	3178197.74
1600.00	2.42	342.130	1599.78	10.64N	3.43W	==>	3.83	1230029.08	3178196.44
1700.00	2.42	342.130	1699.69	14.66N	4.73W	==>	5.28	1230033.10	3178195.14
1800.00	2.42	342.130	1799.60	18.69N	6.02W	==>	6.73	1230037.12	3178193.84
1900.00	2.42	342.130	1899.51	22.71N	7.32W	==>	8.18	1230041.15	3178192.55
2000.00	2.42	342.130	1999.42	26.73N	8.62W	==>	9.63	1230045.17	3178191.25
2100.00	2.42	342.130	2099.33	30.76N	9.92W	==>	11.08	1230049.19	3178189.95
2200.00	2.42	342.130	2199.25	34.78N	11.21W	==>	12.53	1230053.22	3178188.65
2300.00	2.42	342.130	2299.16	38.80N	12.51W	==>	13.98	1230057.24	3178187.36
2400.00	2.42	342.130	2399.07	42.83N	13.81W	==>	15.43	1230061.26	3178186.06
2500.00	2.42	342.130	2498.98	46.85N	15.11W	==>	16.88	1230065.29	3178184.76
2600.00	2.42	342.130	2598.89	50.87N	16.40W	==>	18.33	1230069.31	3178183.47
2700.00	2.42	342.130	2698.80	54.90N	17.70W	==>	19.78	1230073.33	3178182.17
2800.00	2.42	342.130	2798.71	58.92N	19.00W	==>	21.23	1230077.36	3178180.87
2900.00	2.42	342.130	2898.62	62.94N	20.29W	==>	22.67	1230081.38	3178179.57
3000.00	2.42	342.130	2998.53	66.97N	21.59W	==>	24.12	1230085.40	3178178.28
3100.00	2.42	342.130	3098.44	70.99N	22.89W	==>	25.57	1230089.42	3178176.98
3200.00	2.42	342.130	3198.35	75.01N	24.19W	==>	27.02	1230093.45	3178175.68
3300.00	2.42	342.130	3298.26	79.04N	25.48W	==>	28.47	1230097.47	3178174.39
3400.00	2.42	342.130	3398.17	83.06N	26.78W	==>	29.92	1230101.49	3178173.09
3500.00	2.42	342.130	3498.08	87.08N	28.08W	==>	31.37	1230105.52	3178171.79
3600.00	2.42	342.130	3597.99	91.11N	29.38W	==>	32.82	1230109.54	3178170.49
3700.00	2.42	342.130	3697.90	95.13N	30.67W	==>	34.27	1230113.56	3178169.20

All data is in Feet unless otherwise stated
Coordinates are from Slot MD's are from Rig and TVD's are from Rig (Planned Datum #1 5136.6ft above Mean Sea Level)
Vertical Section is from 0.00N 0.00E on azimuth 272.180 degrees
Bottom hole distance is 5168.63 Feet on azimuth 272.18 degrees from Wellhead
Calculation method uses Minimum Curvature method
Prepared by Integrated Petroleum Technologies, Inc.
Date Printed: 15-Oct-2014



WARD PETROLEUM

INTEGRATED PETROLEUM TECHNOLOGIES, INC
SYSDRILL
Well Design Combined Report
Wellbore: Riverdale 15-2-8HN (PWB)



Interpolated Wellpath									
MD[ft]	Inc[deg]	Azi[deg]	TVD[ft]	North[ft]	East[ft]	Dogleg [deg/100ft]	Vertical Section[ft]	Northing	Easting
3800.00	2.42	342.130	3797.82	99.15N	31.97W	==>	35.72	1230117.59	3178167.90
3900.00	2.42	342.130	3897.73	103.18N	33.27W	==>	37.17	1230121.61	3178166.60
4000.00	2.42	342.130	3997.64	107.20N	34.56W	==>	38.62	1230125.63	3178165.30
4100.00	2.42	342.130	4097.55	111.22N	35.86W	==>	40.07	1230129.66	3178164.01
4200.00	2.42	342.130	4197.46	115.25N	37.16W	==>	41.52	1230133.68	3178162.71
4300.00	2.42	342.130	4297.37	119.27N	38.46W	==>	42.97	1230137.70	3178161.41
4400.00	2.42	342.130	4397.28	123.29N	39.75W	==>	44.42	1230141.73	3178160.12
4500.00	2.42	342.130	4497.19	127.32N	41.05W	==>	45.86	1230145.75	3178158.82
4600.00	2.42	342.130	4597.10	131.34N	42.35W	==>	47.31	1230149.77	3178157.52
4700.00	2.42	342.130	4697.01	135.36N	43.65W	==>	48.76	1230153.80	3178156.22
4800.00	2.42	342.130	4796.92	139.39N	44.94W	==>	50.21	1230157.82	3178154.93
4900.00	2.42	342.130	4896.83	143.41N	46.24W	==>	51.66	1230161.84	3178153.63
5000.00	2.42	342.130	4996.74	147.43N	47.54W	==>	53.11	1230165.87	3178152.33
5100.00	2.42	342.130	5096.65	151.46N	48.83W	==>	54.56	1230169.89	3178151.04
5200.00	2.42	342.130	5196.56	155.48N	50.13W	==>	56.01	1230173.91	3178149.74
5300.00	2.42	342.130	5296.47	159.50N	51.43W	==>	57.46	1230177.93	3178148.44
5400.00	2.42	342.130	5396.38	163.53N	52.73W	==>	58.91	1230181.96	3178147.14
5500.00	2.42	342.130	5496.30	167.55N	54.02W	==>	60.36	1230185.98	3178145.85
5600.00	2.42	342.130	5596.21	171.57N	55.32W	==>	61.81	1230190.00	3178144.55
5700.00	2.42	342.130	5696.12	175.60N	56.62W	==>	63.26	1230194.03	3178143.25
5800.00	2.42	342.130	5796.03	179.62N	57.91W	==>	64.71	1230198.05	3178141.96
5900.00	2.42	342.130	5895.94	183.64N	59.21W	==>	66.16	1230202.07	3178140.66
6000.00	2.42	342.130	5995.85	187.67N	60.51W	==>	67.61	1230206.10	3178139.36
6100.00	2.42	342.130	6095.76	191.69N	61.81W	==>	69.06	1230210.12	3178138.06
6200.00	2.42	342.130	6195.67	195.71N	63.10W	==>	70.50	1230214.14	3178136.77
6300.00	2.42	342.130	6295.58	199.73N	64.40W	==>	71.95	1230218.17	3178135.47
6400.00	2.42	342.130	6395.49	203.76N	65.70W	==>	73.40	1230222.19	3178134.17
6500.00	2.42	342.130	6495.40	207.78N	67.00W	==>	74.85	1230226.21	3178132.87
6600.00	2.42	342.130	6595.31	211.80N	68.29W	==>	76.30	1230230.24	3178131.58
6700.00	2.42	342.130	6695.22	215.83N	69.59W	==>	77.75	1230234.26	3178130.28
6800.00	2.42	342.130	6795.13	219.85N	70.89W	==>	79.20	1230238.28	3178128.98
6900.00	2.42	342.130	6895.04	223.87N	72.18W	==>	80.65	1230242.31	3178127.69
7000.00	3.61	309.210	6994.94	227.89N	73.94W	8.00	82.56	1230246.32	3178125.93
7100.00	11.01	281.320	7094.09	231.76N	85.76W	8.00	94.52	1230250.19	3178114.11
7200.00	18.90	276.110	7190.62	235.37N	111.27W	8.00	120.15	1230253.80	3178088.60
7300.00	26.86	273.910	7282.68	238.63N	149.98W	8.00	158.95	1230257.06	3178049.89
7400.00	34.83	272.660	7368.47	241.50N	201.13W	8.00	210.18	1230259.93	3177998.74
7500.00	42.82	271.830	7446.31	243.92N	263.73W	8.00	272.82	1230262.35	3177936.14
7600.00	50.81	271.220	7514.69	245.83N	336.56W	8.00	345.67	1230264.26	3177863.32
7700.00	58.80	270.730	7572.29	247.21N	418.20W	8.00	427.30	1230265.64	3177781.69
7800.00	66.79	270.320	7617.98	248.01N	507.05W	8.00	516.12	1230266.44	3177692.83
7900.00	74.78	269.960	7650.86	248.24N	601.41W	8.00	610.42	1230266.67	3177598.48
8000.00	82.77	269.620	7670.31	247.88N	699.41W	8.00	708.34	1230266.31	3177500.48
8100.00	89.76	269.340	7676.05	246.95N	799.17W	==>	807.99	1230265.38	3177400.72
8200.00	89.76	269.340	7676.46	245.80N	899.16W	==>	907.86	1230264.23	3177300.74
8300.00	89.76	269.340	7676.87	244.64N	999.15W	==>	1007.74	1230263.07	3177200.75
8400.00	89.76	269.340	7677.28	243.49N	1099.15W	==>	1107.62	1230261.92	3177100.76
8500.00	89.76	269.340	7677.69	242.34N	1199.14W	==>	1207.49	1230260.77	3177000.77
8600.00	89.76	269.340	7678.10	241.19N	1299.13W	==>	1307.37	1230259.62	3176900.78
8700.00	89.76	269.340	7678.52	240.04N	1399.12W	==>	1407.24	1230258.47	3176800.79
8800.00	89.76	269.340	7678.93	238.88N	1499.12W	==>	1507.12	1230257.32	3176700.80
8900.00	89.76	269.340	7679.34	237.73N	1599.11W	==>	1607.00	1230256.16	3176600.81
9000.00	89.76	269.340	7679.75	236.58N	1699.10W	==>	1706.87	1230255.01	3176500.82
9100.00	89.76	269.340	7680.16	235.43N	1799.09W	==>	1806.75	1230253.86	3176400.83
9200.00	89.76	269.340	7680.57	234.28N	1899.09W	==>	1906.63	1230252.71	3176300.84
9300.00	89.76	269.340	7680.98	233.13N	1999.08W	==>	2006.50	1230251.56	3176200.85
9400.00	89.76	269.340	7681.39	231.97N	2099.07W	==>	2106.38	1230250.40	3176100.86
9500.00	89.76	269.340	7681.80	230.82N	2199.06W	==>	2206.25	1230249.25	3176000.87
9600.00	89.76	269.340	7682.21	229.67N	2299.06W	==>	2306.13	1230248.10	3175900.89
9700.00	89.76	269.340	7682.63	228.52N	2399.05W	==>	2406.01	1230246.95	3175800.90

All data is in Feet unless otherwise stated
Coordinates are from Slot MD's are from Rig and TVD's are from Rig (Planned Datum #1 5136.6ft above Mean Sea Level)
Vertical Section is from 0.00N 0.00E on azimuth 272.180 degrees
Bottom hole distance is 5168.63 Feet on azimuth 272.18 degrees from Wellhead
Calculation method uses Minimum Curvature method
Prepared by Integrated Petroleum Technologies, Inc.
Date Printed: 15-Oct-2014



INTEGRATED PETROLEUM TECHNOLOGIES, INC
SYSDRILL
Well Design Combined Report
Wellbore: Riverdale 15-2-8HN (PWB)



WARD PETROLEUM

Interpolated Wellpath									
MD[ft]	Inc[deg]	Azi[deg]	TVD[ft]	North[ft]	East[ft]	Dogleg [deg/100ft]	Vertical Section[ft]	Northing	Easting
9800.00	89.76	269.340	7683.04	227.37N	2499.04W	==>	2505.88	1230245.80	3175700.91
9900.00	89.76	269.340	7683.45	226.21N	2599.03W	==>	2605.76	1230244.64	3175600.92
10000.00	89.76	269.340	7683.86	225.06N	2699.03W	==>	2705.64	1230243.49	3175500.93
10100.00	89.76	269.340	7684.27	223.91N	2799.02W	==>	2805.51	1230242.34	3175400.94
10200.00	89.76	269.340	7684.68	222.76N	2899.01W	==>	2905.39	1230241.19	3175300.95
10300.00	89.76	269.340	7685.09	221.61N	2999.01W	==>	3005.27	1230240.04	3175200.96
10400.00	89.76	269.340	7685.50	220.45N	3099.00W	==>	3105.14	1230238.88	3175100.97
10500.00	89.76	269.340	7685.91	219.30N	3198.99W	==>	3205.02	1230237.73	3175000.98
10600.00	89.76	269.340	7686.33	218.15N	3298.98W	==>	3304.89	1230236.58	3174900.99
10700.00	89.76	269.340	7686.74	217.00N	3398.98W	==>	3404.77	1230235.43	3174801.00
10800.00	89.76	269.340	7687.15	215.85N	3498.97W	==>	3504.65	1230234.28	3174701.01
10900.00	89.76	269.340	7687.56	214.69N	3598.96W	==>	3604.52	1230233.13	3174601.03
11000.00	89.76	269.340	7687.97	213.54N	3698.95W	==>	3704.40	1230231.97	3174501.04
11100.00	89.76	269.340	7688.38	212.39N	3798.95W	==>	3804.28	1230230.82	3174401.05
11200.00	89.76	269.340	7688.79	211.24N	3898.94W	==>	3904.15	1230229.67	3174301.06
11300.00	89.76	269.340	7689.20	210.09N	3998.93W	==>	4004.03	1230228.52	3174201.07
11400.00	89.76	269.340	7689.61	208.93N	4098.92W	==>	4103.90	1230227.37	3174101.08
11500.00	89.76	269.340	7690.03	207.78N	4198.92W	==>	4203.78	1230226.21	3174001.09
11600.00	89.76	269.340	7690.44	206.63N	4298.91W	==>	4303.66	1230225.06	3173901.10
11700.00	89.76	269.340	7690.85	205.48N	4398.90W	==>	4403.53	1230223.91	3173801.11
11800.00	89.76	269.340	7691.26	204.33N	4498.89W	==>	4503.41	1230222.76	3173701.12
11900.00	89.76	269.340	7691.67	203.18N	4598.89W	==>	4603.29	1230221.61	3173601.13
12000.00	89.76	269.340	7692.08	202.02N	4698.88W	==>	4703.16	1230220.45	3173501.14
12100.00	89.76	269.340	7692.49	200.87N	4798.87W	==>	4803.04	1230219.30	3173401.15
12200.00	89.76	269.340	7692.90	199.72N	4898.86W	==>	4902.91	1230218.15	3173301.16
12300.00	89.76	269.340	7693.31	198.57N	4998.86W	==>	5002.79	1230217.00	3173201.18
12400.00	89.76	269.340	7693.73	197.42N	5098.85W	==>	5102.67	1230215.85	3173101.19
12466.05	89.76	269.340	7694.00	196.65N	5164.89W	==>	5168.63	1230215.09	3173035.15

All data is in Feet unless otherwise stated
Coordinates are from Slot MD's are from Rig and TVD's are from Rig (Planned Datum #1 5136.6ft above Mean Sea Level)
Vertical Section is from 0.00N 0.00E on azimuth 272.180 degrees
Bottom hole distance is 5168.63 Feet on azimuth 272.18 degrees from Wellhead
Calculation method uses Minimum Curvature method
Prepared by Integrated Petroleum Technologies, Inc.
Date Printed: 15-Oct-2014



WARD PETROLEUM

INTEGRATED PETROLEUM TECHNOLOGIES, INC
SYSDRILL
Well Design Combined Report
Wellbore: Riverdale 15-2-8HN (PWB)



Hole Sections								
Diameter [in]	Start MD[ft]	Start TVD[ft]	Start North[ft]	Start East[ft]	End MD[ft]	End TVD[ft]	End North[ft]	End East[ft]
13 1/2	25.00	25.00	0.00N	0.00E	1200.00	1200.00	0.00N	0.00E
8 3/4	1200.00	1200.00	0.00N	0.00E	8087.00	7675.99	247.10N	786.17W
6 1/8	8087.00	7675.99	247.10N	786.17W	12466.09		196.65N	5164.93W

Casings								
Name	Top MD[ft]	Top TVD[ft]	Top North[ft]	Top East[ft]	Shoe MD[ft]	Shoe TVD[ft]	Shoe North[ft]	Shoe East[ft]
9 5/8in Surface Casing	25.00	25.00	0.00N	0.00E	1200.00	1200.00	0.00N	0.00E
7.0in Intermediate Casing	25.00	25.00	0.00N	0.00E	8087.00	7675.99	247.10N	786.17W
4 1/2in Production Liner	7887.00	7647.34	248.24N	588.89W	12466.09		196.65N	5164.93W

Targets								
Name	North[ft]	East[ft]	TVD[ft]	Latitude	Longitude	Northing	Easting	Last Revised
Ward Riverdale 15-2-8HN BH	196.65N	5164.89W	7694.00	39.96367000	-104.88268000	1230215.09	3173035.15	30-Sep-2014
Ward Riverdale 15-2-8HN LP	242.09N	786.63W	7676.00	39.96371000	-104.86706000	1230260.52	3177413.26	30-Sep-2014

Survey Tool Program						
Reference	Survey Name	MD[ft]	TVD[ft]	Survey Tool	Error Model	
305063	Planned	12466.05	7694.00	WdW Rate Gyro	Standard	

Notes

All data is in Feet unless otherwise stated
Coordinates are from Slot MD's are from Rig and TVD's are from Rig (Planned Datum #1 5136.6ft above Mean Sea Level)
Vertical Section is from 0.00N 0.00E on azimuth 272.180 degrees
Bottom hole distance is 5168.63 Feet on azimuth 272.18 degrees from Wellhead
Calculation method uses Minimum Curvature method
Prepared by Integrated Petroleum Technologies, Inc.
Date Printed: 15-Oct-2014



SYSDRILL
Closest Approach + Clearance Factor Summary Report
Wellbore: Riverdale 15-2-8HN (PWB)



Ellipse separations are reported ONLY if BOTH wells have uncertainty data
Only Depth and Magnetic Reference Field error terms are correlated across tie points
Proximities beyond 2500.00ft with expansion rate of 0.00ft/1000ft are not reported
Scan limit is calculated on CENTRE to CENTRE distance

Summary data uses Closest Approach clearance calculation for all minima
Hole size/Casings ARE included
Hole size/Casings are NOT subtracted from Centre-Centre distance
Confidence limit of 95.00% / 2.80 SD.

Wellbore		
Name	Created	Last Revised
Riverdale 15-2-8HN (PWB)	30-Sep-2014	2-Oct-2014

Well		
Name	Government ID	Last Revised
Riverdale 15-2-8HN		1-Oct-2014

Slot						
Name	Grid Northing	Grid Easting	Latitude	Longitude	North	East
Slot #13	1230018.4382	3178199.8681	39.96303000	-104.86426000	36.49S	8.15W

Installation				
Name	Easting	Northing	Coord System Name	North Alignment
Riverdale	3178208.0159	1230054.9248	CO83-NF on NORTH AMERICAN DATUM 1983 datum	Grid

Field				
Name	Easting	Northing	Coord System Name	North Alignment
West Brighton	3178196.4983	1231661.3262	CO83-NF on NORTH AMERICAN DATUM 1983 datum	Grid

Clearance Summary								
Offset Wellbore	Offset Structure	Separation [ft]	MD[ft]	Diverging From[ft]	Ellipse Separation [ft]	Ellipse MD[ft]	Clearance Factor	Clearance MD[ft]
Riverdale 14-4-7HN (PWB)	Riverdale	8.70	1486.05	7601.28	5.69	1486.05	2.88	1501.38
Riverdale 14-4-8HC (PWB)	Riverdale	11.02	1353.74	7731.55	7.92	7731.55	1.52	7731.55
Riverdale 15-2-9HC (PWB)	Riverdale	14.57	1275.00	1275.00	11.73	1189.70	5.13	1189.70
Riverdale 15-2-7HC (PWB)	Riverdale	14.57	1249.94	1249.94	11.73	1189.70	5.13	1189.70
Riverdale 14-4-9HN (PWB)	Riverdale	23.42	1275.00	7579.32	20.58	1189.70	8.24	1189.70
Riverdale 14-4-6HC (PWB)	Riverdale	23.42	1225.00	7754.45	20.58	1189.70	8.24	1189.70
Riverdale 15-2-10HN (PWB)	Riverdale	29.14	1275.00	12466.05	26.30	1189.70	9.39	12466.05
Riverdale 15-2-6HN (PWB)	Riverdale	29.14	1225.00	1225.00	26.30	1189.70	9.19	12466.05
Riverdale 14-4-10HC (PWB)	Riverdale	37.39	1275.00	7731.59	34.55	1189.70	13.16	1189.70
Riverdale 14-4-5HN (PWB)	Riverdale	37.39	1189.70	7630.36	34.55	1189.70	13.17	1189.70
Riverdale 15-2-5HC (PWB)	Riverdale	43.71	1189.70	1189.70	40.87	1189.70	14.22	12466.05
Riverdale	Riverdale	47.36	1275.00	12466.05	44.52	1189.70	14.44	12466.05

All data is in Feet unless otherwise stated
Coordinates are from Slot MD's are from Rig and TVD's are from Rig (Planned Datum #1 5136.6ft above Mean Sea Level)
Vertical Section is from 0.00N 0.00E on azimuth 272.180 degrees
Prepared by Integrated Petroleum Technologies, Inc.
Date Printed: 15-Oct-2014



WARD PETROLEUM

SYSDRILL
Closest Approach + Clearance Factor Summary Report
Wellbore: Riverdale 15-2-8HN (PWB)



Offset Wellbore	Offset Structure	Separation [ft]	MD[ft]	Diverging From[ft]	Ellipse Separation [ft]	Ellipse MD[ft]	Clearance Factor	Clearance MD[ft]
15-2-11HC (PWB)								
Riverdale 14-4-11HN (PWB)	Riverdale	55.29	1275.00	7577.02	52.44	1189.70	19.45	1189.70
Riverdale 15-2-12HN (PWB)	Riverdale	61.93	1247.92	12466.05	59.09	1189.70	18.80	12466.05
Riverdale 14-4-12HC (PWB)	Riverdale	69.72	1247.50	1247.50	66.88	1189.70	24.53	1189.70
Riverdale 22-2-1HC (PWB)	Riverdale	76.50	1189.70	12466.05	73.66	1189.70	23.66	12466.05
Riverdale 23-4-1HN (PWB)	Riverdale	84.21	1189.70	1189.70	81.36	1189.70	29.63	1189.70
W United Bank of Denver 1 (AWB)	Offsets	183.07	1275.00	1275.00	173.34	1288.12	15.98	4158.86
W Ehler, John 15 (AWB)	Offsets	934.12	5131.30	5131.30	912.93	5131.30	44.06	5159.51
W RC Nauman 2 (AWB)	Offsets	1273.74	5356.36	5356.36	1252.33	5356.36	59.47	5389.17
W Adams County 1 (AWB)	Offsets	1306.17	1275.00	1275.00	1296.69	1288.12	69.18	5274.34
W United Bank of Denver 3 (AWB)	Offsets	1356.97	1275.00	1275.00	1347.50	1337.34	66.12	5257.94
W Ehler, John 18 (AWB)	Offsets	1554.76	5274.34	5274.34	1533.64	5274.34	73.55	5323.56
W Ehler, John 20 (AWB)	Offsets	1652.93	1275.00	1275.00	1643.42	1304.53	82.16	5307.15
W Nauman 1-14 (AWB)	Offsets	1674.98	7029.59	7029.59	1644.36	7029.59	53.93	7357.68
W RC Nauman 4 (AWB)	Offsets	2066.52	5225.13	5225.13	2045.32	5225.13	97.29	5339.96
W United Bank of Denver 2 (AWB)	Offsets	2090.64	1275.00	1275.00	2081.44	1288.12	106.13	5339.96
W Ehler, John 22 (AWB)	Offsets	2249.97	5217.84	9589.36	2228.61	5217.84	105.10	5356.36
W Ehler, John 16 (AWB)	Offsets	2464.21	12274.23	12274.23	2438.20	12278.94	93.69	12466.05
W Ehler, John 17 (AWB)	Offsets	2495.57	10954.52	10954.52	2472.53	10954.52	106.03	11327.49