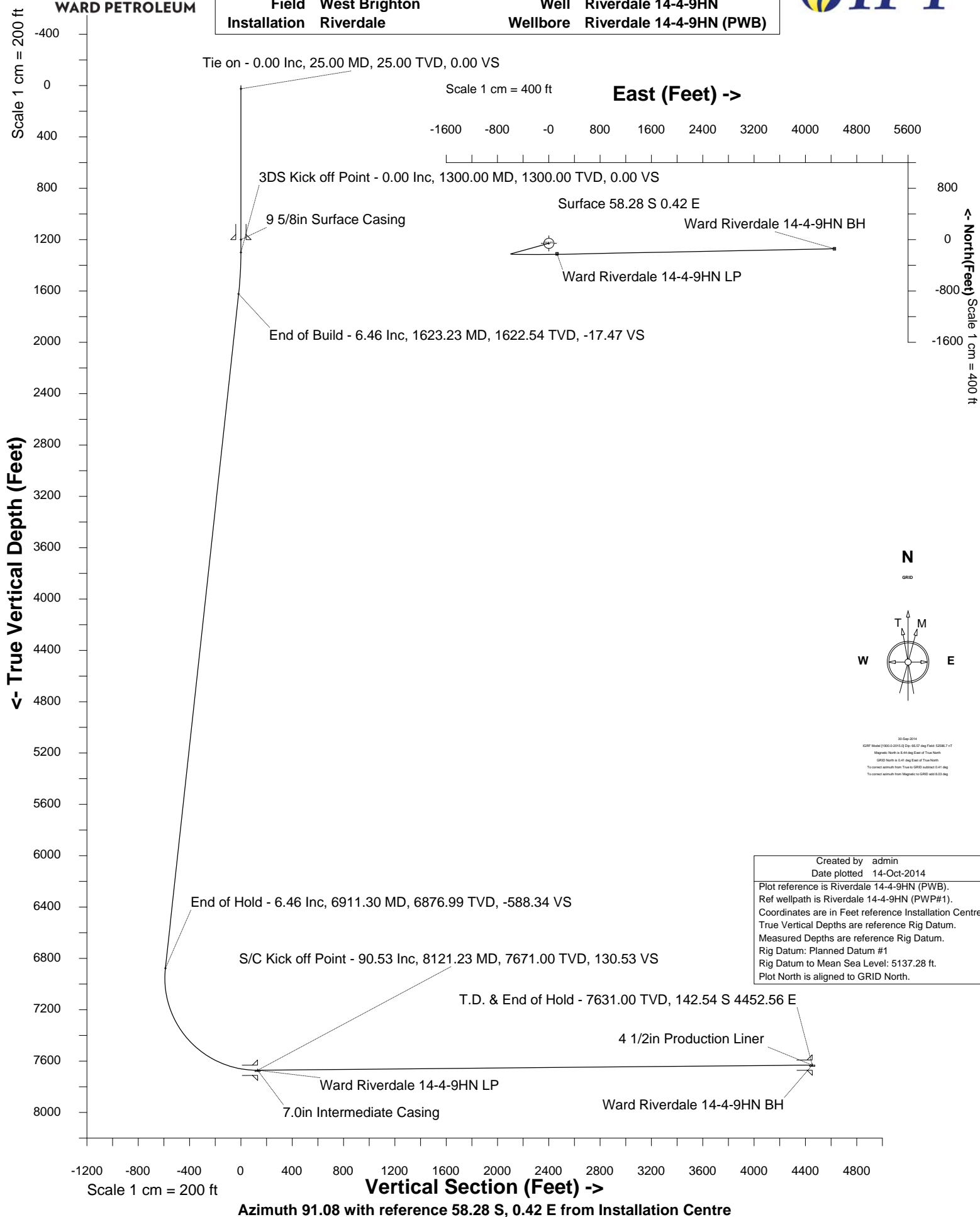




WARD PETROLEUM

WARD PETROLEUM

Location	ADAMS COUNTY, CO	Slot	Slot #5
Field	West Brighton	Well	Riverdale 14-4-9HN
Installation	Riverdale	Wellbore	Riverdale 14-4-9HN (PWB)





WARD PETROLEUM

INTEGRATED PETROLEUM TECHNOLOGIES, INC
SYSDRILL
Well Design Combined Report
Wellbore: Riverdale 14-4-9HN (PWB)



Wellhead Details

Name	Northing	Easting	Latitude	Longitude	North	East	Elevation Above Inst.
Slot #5	1229996.6427	3178208.4338	39.96297000	-104.86423000	58.28S	0.42E	1.12

Declination

Date	Source	Time
30-Sep-2014	IGRF Model [1900.0-2015.0]	10:30

Site Details

Name	Northing	Easting	Coord System Name	North Alignment
Riverdale	1230054.9248	3178208.0159	CO83-NF on NORTH AMERICAN DATUM 1983 datum	Grid

Summary Wellpath

MD[ft]	Inc[deg]	Azi[deg]	TVD[ft]	North[ft]	East[ft]	Dogleg [deg/100ft]	Vertical Section[ft]	Northing	Easting
25.00	0.00	0.000	25.00	0.00N	0.00E		0.00	1229996.64	3178208.43
1300.00	0.00	254.590	1300.00	0.00N	0.00E	==>	0.00	1229996.64	3178208.43
12447.11	90.53	88.850	7631.00	84.25S	4452.14E	==>	4452.94	1229912.39	3182660.43

Interpolated Wellpath

MD[ft]	Inc[deg]	Azi[deg]	TVD[ft]	North[ft]	East[ft]	Dogleg [deg/100ft]	Vertical Section[ft]	Northing	Easting
0.00	0.00	0.000	0.00	0.00N	0.00E		0.00	1229996.64	3178208.43
25.00	0.00	0.000	25.00	0.00N	0.00E	==>	0.00	1229996.64	3178208.43
100.00	0.00	0.000	100.00	0.00N	0.00E	==>	0.00	1229996.64	3178208.43
200.00	0.00	0.000	200.00	0.00N	0.00E	==>	0.00	1229996.64	3178208.43
300.00	0.00	0.000	300.00	0.00N	0.00E	==>	0.00	1229996.64	3178208.43
400.00	0.00	0.000	400.00	0.00N	0.00E	==>	0.00	1229996.64	3178208.43
500.00	0.00	0.000	500.00	0.00N	0.00E	==>	0.00	1229996.64	3178208.43
600.00	0.00	0.000	600.00	0.00N	0.00E	==>	0.00	1229996.64	3178208.43
700.00	0.00	0.000	700.00	0.00N	0.00E	==>	0.00	1229996.64	3178208.43
800.00	0.00	0.000	800.00	0.00N	0.00E	==>	0.00	1229996.64	3178208.43
900.00	0.00	0.000	900.00	0.00N	0.00E	==>	0.00	1229996.64	3178208.43
1000.00	0.00	0.000	1000.00	0.00N	0.00E	==>	0.00	1229996.64	3178208.43
1100.00	0.00	0.000	1100.00	0.00N	0.00E	==>	0.00	1229996.64	3178208.43
1200.00	0.00	0.000	1200.00	0.00N	0.00E	==>	0.00	1229996.64	3178208.43
1275.00	0.00	0.000	1275.00	0.00N	0.00E	==>	0.00	1229996.64	3178208.43
1300.00	0.00	254.590	1300.00	0.00N	0.00E	==>	0.00	1229996.64	3178208.43
1375.00	1.50	254.590	1374.99	0.26S	0.95W	2.00	-0.94	1229996.38	3178207.49
1475.00	3.50	254.590	1474.89	1.42S	5.15W	2.00	-5.12	1229995.22	3178203.28
1575.00	5.50	254.590	1574.58	3.50S	12.71W	2.00	-12.65	1229993.14	3178195.72
1600.00	6.00	254.590	1599.45	4.17S	15.13W	2.00	-15.05	1229992.47	3178193.30
1700.00	6.46	254.590	1698.83	7.14S	25.89W	==>	-25.75	1229989.51	3178182.54
1800.00	6.46	254.590	1798.19	10.13S	36.75W	==>	-36.55	1229986.51	3178171.69
1900.00	6.46	254.590	1897.55	13.12S	47.60W	==>	-47.34	1229983.52	3178160.83
2000.00	6.46	254.590	1996.92	16.11S	58.46W	==>	-58.14	1229980.53	3178149.98
2100.00	6.46	254.590	2096.28	19.11S	69.31W	==>	-68.94	1229977.54	3178139.13
2200.00	6.46	254.590	2195.65	22.10S	80.16W	==>	-79.73	1229974.55	3178128.27
2300.00	6.46	254.590	2295.01	25.09S	91.02W	==>	-90.53	1229971.55	3178117.42
2400.00	6.46	254.590	2394.38	28.08S	101.87W	==>	-101.32	1229968.56	3178106.57
2500.00	6.46	254.590	2493.74	31.07S	112.73W	==>	-112.12	1229965.57	3178095.71
2600.00	6.46	254.590	2593.10	34.07S	123.58W	==>	-122.91	1229962.58	3178084.86
2700.00	6.46	254.590	2692.47	37.06S	134.43W	==>	-133.71	1229959.59	3178074.00
2800.00	6.46	254.590	2791.83	40.05S	145.29W	==>	-144.50	1229956.59	3178063.15
2900.00	6.46	254.590	2891.20	43.04S	156.14W	==>	-155.30	1229953.60	3178052.30
3000.00	6.46	254.590	2990.56	46.03S	167.00W	==>	-166.09	1229950.61	3178041.44
3100.00	6.46	254.590	3089.92	49.03S	177.85W	==>	-176.89	1229947.62	3178030.59
3200.00	6.46	254.590	3189.29	52.02S	188.70W	==>	-187.69	1229944.63	3178019.74
3300.00	6.46	254.590	3288.65	55.01S	199.56W	==>	-198.48	1229941.63	3178008.88
3400.00	6.46	254.590	3388.02	58.00S	210.41W	==>	-209.28	1229938.64	3177998.03
3500.00	6.46	254.590	3487.38	60.99S	221.27W	==>	-220.07	1229935.65	3177987.18

All data is in Feet unless otherwise stated
Coordinates are from Slot MD's are from Rig (Planned Datum #1 5137.3ft above Mean Sea Level)
Vertical Section is from 0.00N 0.00E on azimuth 91.080 degrees
Bottom hole distance is 4452.94 Feet on azimuth 91.08 degrees from Wellhead
Calculation method uses Minimum Curvature method
Prepared by Integrated Petroleum Technologies, Inc.
Date Printed: 14-Oct-2014



INTEGRATED PETROLEUM TECHNOLOGIES, INC
SYSDRILL

Well Design Combined Report
Wellbore: Riverdale 14-4-9HN (PWB)



WARD PETROLEUM

Interpolated Wellpath									
MD[ft]	Inc[deg]	Azi[deg]	TVD[ft]	North[ft]	East[ft]	Dogleg [deg/100ft]	Vertical Section[ft]	Northing	Easting
3600.00	6.46	254.590	3586.75	63.99S	232.12W	==>	-230.87	1229932.66	3177976.32
3700.00	6.46	254.590	3686.11	66.98S	242.97W	==>	-241.66	1229929.67	3177965.47
3800.00	6.46	254.590	3785.47	69.97S	253.83W	==>	-252.46	1229926.67	3177954.61
3900.00	6.46	254.590	3884.84	72.96S	264.68W	==>	-263.25	1229923.68	3177943.76
4000.00	6.46	254.590	3984.20	75.96S	275.54W	==>	-274.05	1229920.69	3177932.91
4100.00	6.46	254.590	4083.57	78.95S	286.39W	==>	-284.85	1229917.70	3177922.05
4200.00	6.46	254.590	4182.93	81.94S	297.24W	==>	-295.64	1229914.71	3177911.20
4300.00	6.46	254.590	4282.29	84.93S	308.10W	==>	-306.44	1229911.71	3177900.35
4400.00	6.46	254.590	4381.66	87.92S	318.95W	==>	-317.23	1229908.72	3177889.49
4500.00	6.46	254.590	4481.02	90.92S	329.81W	==>	-328.03	1229905.73	3177878.64
4600.00	6.46	254.590	4580.39	93.91S	340.66W	==>	-338.82	1229902.74	3177867.78
4700.00	6.46	254.590	4679.75	96.90S	351.51W	==>	-349.62	1229899.75	3177856.93
4800.00	6.46	254.590	4779.12	99.89S	362.37W	==>	-360.41	1229896.75	3177846.08
4900.00	6.46	254.590	4878.48	102.88S	373.22W	==>	-371.21	1229893.76	3177835.22
5000.00	6.46	254.590	4977.84	105.88S	384.08W	==>	-382.00	1229890.77	3177824.37
5100.00	6.46	254.590	5077.21	108.87S	394.93W	==>	-392.80	1229887.78	3177813.52
5200.00	6.46	254.590	5176.57	111.86S	405.78W	==>	-403.60	1229884.79	3177802.66
5300.00	6.46	254.590	5275.94	114.85S	416.64W	==>	-414.39	1229881.79	3177791.81
5400.00	6.46	254.590	5375.30	117.84S	427.49W	==>	-425.19	1229878.80	3177780.96
5500.00	6.46	254.590	5474.66	120.84S	438.35W	==>	-435.98	1229875.81	3177770.10
5600.00	6.46	254.590	5574.03	123.83S	449.20W	==>	-446.78	1229872.82	3177759.25
5700.00	6.46	254.590	5673.39	126.82S	460.05W	==>	-457.57	1229869.83	3177748.39
5800.00	6.46	254.590	5772.76	129.81S	470.91W	==>	-468.37	1229866.83	3177737.54
5900.00	6.46	254.590	5872.12	132.80S	481.76W	==>	-479.16	1229863.84	3177726.69
6000.00	6.46	254.590	5971.49	135.80S	492.62W	==>	-489.96	1229860.85	3177715.83
6100.00	6.46	254.590	6070.85	138.79S	503.47W	==>	-500.75	1229857.86	3177704.98
6200.00	6.46	254.590	6170.21	141.78S	514.32W	==>	-511.55	1229854.87	3177694.13
6300.00	6.46	254.590	6269.58	144.77S	525.18W	==>	-522.35	1229851.87	3177683.27
6400.00	6.46	254.590	6368.94	147.76S	536.03W	==>	-533.14	1229848.88	3177672.42
6500.00	6.46	254.590	6468.31	150.76S	546.89W	==>	-543.94	1229845.89	3177661.56
6600.00	6.46	254.590	6567.67	153.75S	557.74W	==>	-554.73	1229842.90	3177650.71
6700.00	6.46	254.590	6667.03	156.74S	568.60W	==>	-565.53	1229839.91	3177639.86
6800.00	6.46	254.590	6766.40	159.73S	579.45W	==>	-576.32	1229836.91	3177629.00
6900.00	6.46	254.590	6865.76	162.73S	590.30W	==>	-587.12	1229833.92	3177618.15
7000.00	1.80	151.410	6965.50	165.62S	595.68W	8.00	-592.44	1229831.03	3177612.77
7100.00	8.97	99.060	7065.03	168.23S	587.21W	8.00	-583.92	1229828.42	3177621.24
7200.00	16.91	94.140	7162.41	170.51S	564.97W	8.00	-561.64	1229826.13	3177643.48
7300.00	24.88	92.320	7255.76	172.42S	529.39W	8.00	-526.04	1229824.23	3177679.06
7400.00	32.87	91.340	7343.26	173.91S	481.17W	8.00	-477.79	1229822.74	3177727.28
7500.00	40.86	90.720	7423.20	174.96S	421.24W	8.00	-417.85	1229821.69	3177787.21
7600.00	48.85	90.260	7494.04	175.54S	350.77W	8.00	-347.38	1229821.11	3177857.68
7700.00	56.85	89.910	7554.38	175.65S	271.13W	8.00	-267.76	1229821.00	3177937.31
7800.00	64.84	89.620	7603.06	175.28S	183.87W	8.00	-180.52	1229821.37	3178024.57
7900.00	72.84	89.360	7639.13	174.45S	90.69W	8.00	-87.38	1229822.20	3178117.74
8000.00	80.84	89.120	7661.88	173.16S	6.59E	8.00	9.87	1229823.49	3178215.03
8100.00	88.83	88.900	7670.88	171.44S	106.09E	8.00	109.31	1229825.21	3178314.52
8200.00	90.53	88.850	7670.27	169.44S	206.07E	==>	209.23	1229827.21	3178414.49
8300.00	90.53	88.850	7669.34	167.43S	306.04E	==>	309.15	1229829.21	3178514.46
8400.00	90.53	88.850	7668.42	165.43S	406.02E	==>	409.07	1229831.22	3178614.44
8500.00	90.53	88.850	7667.49	163.42S	505.99E	==>	508.99	1229833.23	3178714.41
8600.00	90.53	88.850	7666.57	161.42S	605.97E	==>	608.91	1229835.23	3178814.38
8700.00	90.53	88.850	7665.65	159.41S	705.94E	==>	708.83	1229837.24	3178914.35
8800.00	90.53	88.850	7664.72	157.40S	805.92E	==>	808.75	1229839.24	3179014.33
8900.00	90.53	88.850	7663.80	155.40S	905.89E	==>	908.67	1229841.25	3179114.30
9000.00	90.53	88.850	7662.87	153.39S	1005.87E	==>	1008.59	1229843.25	3179214.27
9100.00	90.53	88.850	7661.95	151.39S	1105.85E	==>	1108.51	1229845.26	3179314.24
9200.00	90.53	88.850	7661.02	149.38S	1205.82E	==>	1208.43	1229847.27	3179414.22
9300.00	90.53	88.850	7660.10	147.38S	1305.80E	==>	1308.35	1229849.27	3179514.19
9400.00	90.53	88.850	7659.17	145.37S	1405.77E	==>	1408.27	1229851.28	3179614.16
9500.00	90.53	88.850	7658.25	143.36S	1505.75E	==>	1508.19	1229853.28	3179714.13

All data is in Feet unless otherwise stated
Coordinates are from Slot MD's are from Rig and TVD's are from Rig (Planned Datum #1 5137.3ft above Mean Sea Level)
Vertical Section is from 0.00N 0.00E on azimuth 91.080 degrees
Bottom hole distance is 4452.94 Feet on azimuth 91.08 degrees from Wellhead
Calculation method uses Minimum Curvature method
Prepared by Integrated Petroleum Technologies, Inc.
Date Printed: 14-Oct-2014



WARD PETROLEUM

INTEGRATED PETROLEUM TECHNOLOGIES, INC
SYSDRILL
Well Design Combined Report
Wellbore: Riverdale 14-4-9HN (PWB)



Interpolated Wellpath									
MD[ft]	Inc[deg]	Azi[deg]	TVD[ft]	North[ft]	East[ft]	Dogleg [deg/100ft]	Vertical Section[ft]	Northing	Easting
9600.00	90.53	88.850	7657.32	141.36S	1605.72E	==>	1608.11	1229855.29	3179814.11
9700.00	90.53	88.850	7656.40	139.35S	1705.70E	==>	1708.03	1229857.29	3179914.08
9800.00	90.53	88.850	7655.47	137.35S	1805.67E	==>	1807.95	1229859.30	3180014.05
9900.00	90.53	88.850	7654.55	135.34S	1905.65E	==>	1907.87	1229861.30	3180114.02
10000.00	90.53	88.850	7653.62	133.34S	2005.63E	==>	2007.79	1229863.31	3180213.99
10100.00	90.53	88.850	7652.70	131.33S	2105.60E	==>	2107.71	1229865.32	3180313.97
10200.00	90.53	88.850	7651.78	129.33S	2205.58E	==>	2207.63	1229867.32	3180413.94
10300.00	90.53	88.850	7650.85	127.32S	2305.55E	==>	2307.55	1229869.33	3180513.91
10400.00	90.53	88.850	7649.93	125.31S	2405.53E	==>	2407.47	1229871.33	3180613.88
10500.00	90.53	88.850	7649.00	123.31S	2505.50E	==>	2507.39	1229873.34	3180713.86
10600.00	90.53	88.850	7648.08	121.30S	2605.48E	==>	2607.31	1229875.34	3180813.83
10700.00	90.53	88.850	7647.15	119.30S	2705.46E	==>	2707.23	1229877.35	3180913.80
10800.00	90.53	88.850	7646.23	117.29S	2805.43E	==>	2807.15	1229879.36	3181013.77
10900.00	90.53	88.850	7645.30	115.29S	2905.41E	==>	2907.07	1229881.36	3181113.75
11000.00	90.53	88.850	7644.38	113.28S	3005.38E	==>	3006.99	1229883.37	3181213.72
11100.00	90.53	88.850	7643.45	111.27S	3105.36E	==>	3106.91	1229885.37	3181313.69
11200.00	90.53	88.850	7642.53	109.27S	3205.33E	==>	3206.83	1229887.38	3181413.66
11300.00	90.53	88.850	7641.60	107.26S	3305.31E	==>	3306.75	1229889.38	3181513.64
11400.00	90.53	88.850	7640.68	105.26S	3405.28E	==>	3406.67	1229891.39	3181613.61
11500.00	90.53	88.850	7639.75	103.25S	3505.26E	==>	3506.59	1229893.40	3181713.58
11600.00	90.53	88.850	7638.83	101.25S	3605.24E	==>	3606.51	1229895.40	3181813.55
11700.00	90.53	88.850	7637.91	99.24S	3705.21E	==>	3706.43	1229897.41	3181913.52
11800.00	90.53	88.850	7636.98	97.23S	3805.19E	==>	3806.35	1229899.41	3182013.50
11900.00	90.53	88.850	7636.06	95.23S	3905.16E	==>	3906.27	1229901.42	3182113.47
12000.00	90.53	88.850	7635.13	93.22S	4005.14E	==>	4006.19	1229903.42	3182213.44
12100.00	90.53	88.850	7634.21	91.22S	4105.11E	==>	4106.10	1229905.43	3182313.41
12200.00	90.53	88.850	7633.28	89.21S	4205.09E	==>	4206.02	1229907.43	3182413.39
12300.00	90.53	88.850	7632.36	87.21S	4305.07E	==>	4305.94	1229909.44	3182513.36
12400.00	90.53	88.850	7631.43	85.20S	4405.04E	==>	4405.86	1229911.45	3182613.33
12447.11	90.53	88.850	7631.00	84.25S	4452.14E	==>	4452.94	1229912.39	3182660.43

All data is in Feet unless otherwise stated
Coordinates are from Slot MD's are from Rig and TVD's are from Rig (Planned Datum #1 5137.3ft above Mean Sea Level)
Vertical Section is from 0.00N 0.00E on azimuth 91.080 degrees
Bottom hole distance is 4452.94 Feet on azimuth 91.08 degrees from Wellhead
Calculation method uses Minimum Curvature method
Prepared by Integrated Petroleum Technologies, Inc.
Date Printed: 14-Oct-2014



WARD PETROLEUM

INTEGRATED PETROLEUM TECHNOLOGIES, INC
SYSDRILL
Well Design Combined Report
Wellbore: Riverdale 14-4-9HN (PWB)



Hole Sections								
Diameter [in]	Start MD[ft]	Start TVD[ft]	Start North[ft]	Start East[ft]	End MD[ft]	End TVD[ft]	End North[ft]	End East[ft]
13 1/2	25.00	25.00	0.00N	0.00E	1200.00	1200.00	0.00N	0.00E
8 3/4	1200.00	1200.00	0.00N	0.00E	8121.00	7671.00	171.02S	127.08E
6 1/8	8121.00	7671.00	171.02S	127.08E	12447.11	7631.00	84.25S	4452.14E

Casings								
Name	Top MD[ft]	Top TVD[ft]	Top North[ft]	Top East[ft]	Shoe MD[ft]	Shoe TVD[ft]	Shoe North[ft]	Shoe East[ft]
9 5/8in Surface Casing	25.00	25.00	0.00N	0.00E	1200.00	1200.00	0.00N	0.00E
7.0in Intermediate Casing	25.00	25.00	0.00N	0.00E	8121.00	7671.00	171.02S	127.08E
4 1/2in Production Liner	7921.00	7645.03	174.21S	70.54W	12447.11	7631.00	84.25S	4452.14E

Targets								
Name	North[ft]	East[ft]	TVD[ft]	Latitude	Longitude	Northing	Easting	Last Revised
Ward Riverdale 14-4-9HN BH	84.25S	4452.14E	7631.00	39.96265000	-104.84835000	1229912.39	3182660.43	30-Sep-2014
Ward Riverdale 14-4-9HN LP	163.02S	127.31E	7671.00	39.96252000	-104.86378000	1229833.63	3178335.74	30-Sep-2014

Survey Tool Program						
Reference	Survey Name	MD[ft]	TVD[ft]	Survey Tool	Error Model	
304855	Planned	12447.11	7631.00	WdW Rate Gyro	Standard	

Notes

All data is in Feet unless otherwise stated
Coordinates are from Slot MD's are from Rig and TVD's are from Rig (Planned Datum #1 5137.3ft above Mean Sea Level)
Vertical Section is from 0.00N 0.00E on azimuth 91.080 degrees
Bottom hole distance is 4452.94 Feet on azimuth 91.08 degrees from Wellhead
Calculation method uses Minimum Curvature method
Prepared by Integrated Petroleum Technologies, Inc.
Date Printed: 14-Oct-2014



WARD PETROLEUM

SYSDRILL
Closest Approach + Clearance Factor Summary Report
Wellbore: Riverdale 14-4-9HN (PWB)



Ellipse separations are reported ONLY if BOTH wells have uncertainty data
Only Depth and Magnetic Reference Field error terms are correlated across tie points
Proximities beyond 2500.00ft with expansion rate of 0.00ft/1000ft are not reported
Scan limit is calculated on CENTRE to CENTRE distance

Summary data uses Closest Approach clearance calculation for all minima
Hole size/Casings ARE included
Hole size/Casings are NOT subtracted from Centre-Centre distance
Confidence limit of 95.00% / 2.80 SD.

Wellbore		
Name	Created	Last Revised
Riverdale 14-4-9HN (PWB)	30-Sep-2014	2-Oct-2014

Well		
Name	Government ID	Last Revised
Riverdale 14-4-9HN		1-Oct-2014

Slot						
Name	Grid Northing	Grid Easting	Latitude	Longitude	North	East
Slot #5	1229996.6427	3178208.4338	39.96297000	-104.86423000	58.28S	0.42E

Installation					
Name	Easting	Northing	Coord System Name	North Alignment	
Riverdale	3178208.0159	1230054.9248	CO83-NF on NORTH AMERICAN DATUM 1983 datum	Grid	

Field				
Name	Easting	Northing	Coord System Name	North Alignment
West Brighton	3178196.4983	1231661.3262	CO83-NF on NORTH AMERICAN DATUM 1983 datum	Grid

Clearance Summary								
Offset Wellbore	Offset Structure	Separation [ft]	MD[ft]	Diverging From[ft]	Ellipse Separation [ft]	Ellipse MD[ft]	Clearance Factor	Clearance MD[ft]
Riverdale 15-2-9HC (PWB)	Riverdale	4.74	1557.98	7763.51	1.61	1557.98	1.51	7763.51
Riverdale 15-2-10HN (PWB)	Riverdale	10.34	1425.58	7606.73	7.42	1425.58	3.52	1454.51
Riverdale 14-4-10HC (PWB)	Riverdale	14.19	1431.33	8121.23	11.26	1431.33	4.84	1452.17
Riverdale 14-4-8HC (PWB)	Riverdale	14.57	1275.19	1275.19	11.73	1189.70	5.13	1189.70
Riverdale 15-2-8HN (PWB)	Riverdale	23.42	1275.71	7620.62	20.58	1189.70	8.25	1189.70
Riverdale 15-2-11HC (PWB)	Riverdale	26.85	1298.69	7896.59	24.01	1189.70	9.45	1189.70
Riverdale 14-4-7HN (PWB)	Riverdale	29.14	1250.39	1250.39	26.30	1189.70	10.26	1189.70
Riverdale 14-4-11HN (PWB)	Riverdale	32.79	1298.62	1298.62	29.94	1189.70	10.79	12447.11
Riverdale 15-2-7HC (PWB)	Riverdale	37.39	1250.65	7769.19	34.55	1189.70	13.16	1189.70
Riverdale 15-2-12HN (PWB)	Riverdale	40.94	1248.63	7770.97	38.10	1189.70	14.41	1189.70
Riverdale	Riverdale	43.71	1225.64	1225.64	40.87	1189.70	15.39	1189.70

All data is in Feet unless otherwise stated
Coordinates are from Slot MD's are from Rig and TVD's are from Rig (Planned Datum #1 5137.3ft above Mean Sea Level)
Vertical Section is from 0.00N 0.00E on azimuth 91.080 degrees
Prepared by Integrated Petroleum Technologies, Inc.
Date Printed: 14-Oct-2014



WARD PETROLEUM

SYSDRILL
Closest Approach + Clearance Factor Summary Report
Wellbore: Riverdale 14-4-9HN (PWB)



Offset Wellbore	Offset Structure	Separation [ft]	MD[ft]	Diverging From[ft]	Ellipse Separation [ft]	Ellipse MD[ft]	Clearance Factor	Clearance MD[ft]
14-4-6HC (PWB)								
Riverdale 14-4-12HC (PWB)	Riverdale	47.36	1248.21	8121.23	44.52	1189.70	16.60	12447.11
Riverdale 15-2-6HN (PWB)	Riverdale	51.69	1225.65	7625.03	48.85	1189.70	18.20	1189.70
Riverdale 22-2-1HC (PWB)	Riverdale	55.29	1189.70	8070.32	52.44	1189.70	19.46	1189.70
Riverdale 14-4-5HN (PWB)	Riverdale	58.29	1189.70	1189.70	55.45	1189.70	20.53	1189.70
Riverdale 23-4-1HN (PWB)	Riverdale	61.93	1189.70	1189.70	59.09	1189.70	21.58	12447.11
Riverdale 15-2-5HC (PWB)	Riverdale	66.11	1200.76	1200.76	63.27	1189.70	23.28	1189.70
W United Bank of Denver 1 (AWB)	Offsets	149.30	2026.31	2026.31	136.71	2075.52	11.20	2485.63
W Ehler, John 15 (AWB)	Offsets	605.82	5202.80	5202.80	584.33	5202.80	28.19	5192.32
W Adams County 1 (AWB)	Offsets	1217.54	5126.71	5126.71	1195.14	5274.34	53.92	5323.56
W Ehler, John 20 (AWB)	Offsets	1307.86	5378.64	5378.64	1285.80	5378.64	59.29	5405.58
W United Bank of Denver 3 (AWB)	Offsets	1351.69	1300.00	9359.38	1342.25	1304.53	84.49	5241.54
W RC Nauman 2 (AWB)	Offsets	1434.11	1304.53	1304.53	1424.52	1320.93	75.88	5339.96
KROUGH-SCOTT #1 (AWB)	Offsets	1618.29	12447.11	12447.11	1578.51	12447.11	40.68	12447.11
W Ehler, John 18 (AWB)	Offsets	1639.67	5250.26	5250.26	1617.18	5250.26	72.73	5339.96
W Nauman 1-14 (AWB)	Offsets	1878.31	1304.53	8629.88	1866.50	1320.93	53.46	9211.35
W Ehler, John 22 (AWB)	Offsets	1893.31	5416.04	5416.04	1871.76	5416.04	87.82	5454.79
W United Bank of Denver 2 (AWB)	Offsets	2070.82	1304.53	1304.53	2061.50	1320.93	108.86	5307.15
W RC Nauman 4 (AWB)	Offsets	2121.56	1300.00	1300.00	2111.96	1320.93	118.56	5225.00
W Ehler, John 21 (AWB)	Offsets	2229.17	5478.54	5478.54	2207.59	5478.54	103.22	5536.81
Sharp #23-3-1HC (PWB)	Sharp Pad	2269.90	12447.11	12447.11	2218.43	12447.11	44.10	12447.11
Sharp #24-3-12HN (PWB)	Sharp Pad	2385.37	12447.11	12447.11	2328.19	12447.11	41.72	12447.11
W Ehler, John 11 (AWB)	Offsets	2389.26	5391.09	5391.09	2366.93	5391.09	106.74	5536.81
W Krough-Nauman 1 (AWB)	Offsets	2438.47	10894.00	10894.00	2386.28	10917.39	44.78	11475.13

All data is in Feet unless otherwise stated
Coordinates are from Slot MD's are from Rig and TVD's are from Rig (Planned Datum #1 5137.3ft above Mean Sea Level)
Vertical Section is from 0.00N 0.00E on azimuth 91.080 degrees
Prepared by Integrated Petroleum Technologies, Inc.
Date Printed: 14-Oct-2014