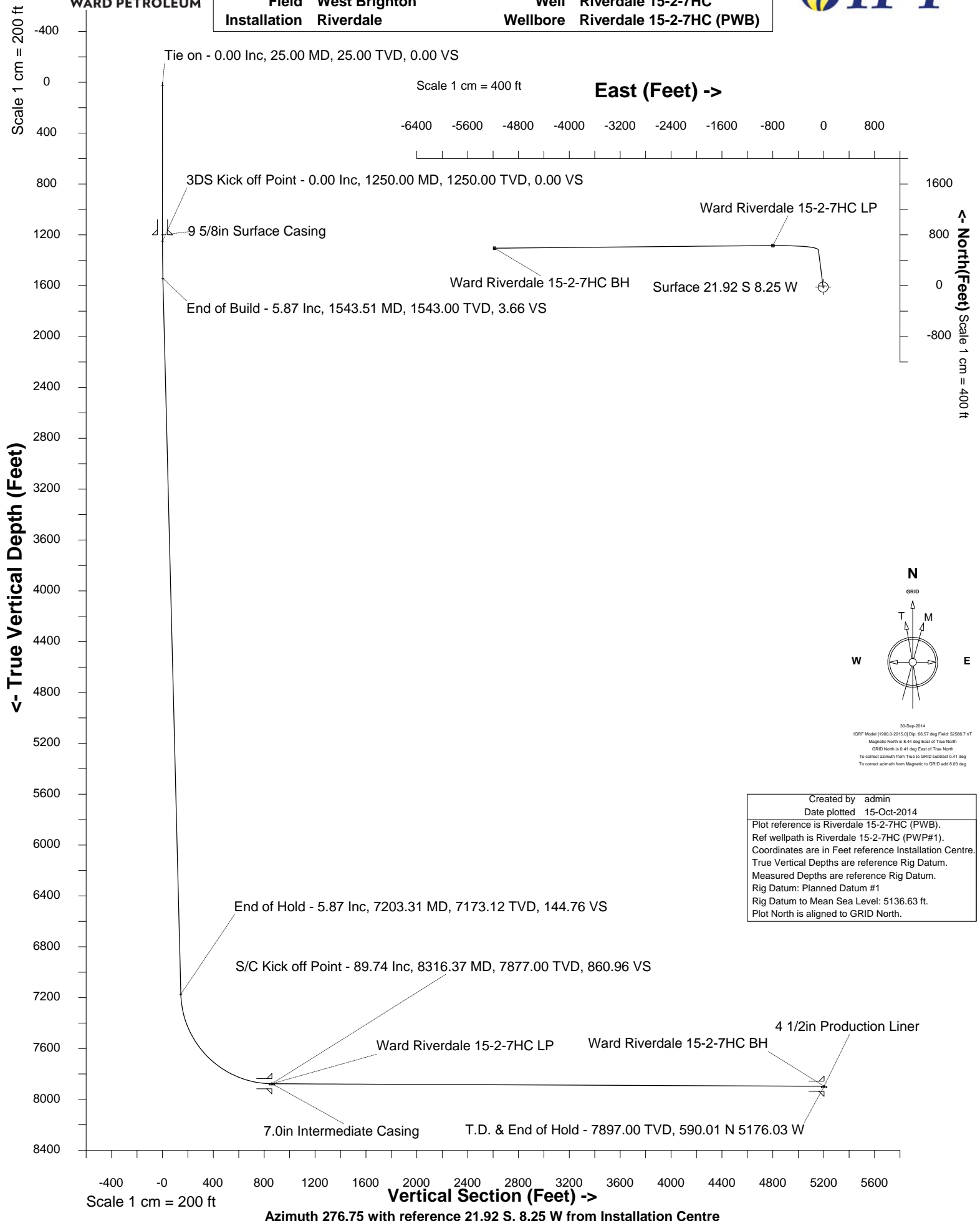




WARD PETROLEUM

WARD PETROLEUM

Location	ADAMS COUNTY, CO	Slot	Slot #12
Field	West Brighton	Well	Riverdale 15-2-7HC
Installation	Riverdale	Wellbore	Riverdale 15-2-7HC (PWB)





WARD PETROLEUM

INTEGRATED PETROLEUM TECHNOLOGIES, INC
SYSDRILL
Well Design Combined Report
Wellbore: Riverdale 15-2-7HC (PWB)



Wellhead Details

Name	Northing	Easting	Latitude	Longitude	North	East	Elevation Above Inst.
Slot #12	1230033.0087	3178199.7637	39.96307000	-104.86426000	21.92S	8.25W	0.47

Declination

Date	Source	Time
30-Sep-2014	IGRF Model [1900.0-2015.0]	10:30

Site Details

Name	Northing	Easting	Coord System Name	North Alignment
Riverdale	1230054.9248	3178208.0159	CO83-NF on NORTH AMERICAN DATUM 1983 datum	Grid

Summary Wellpath

MD[ft]	Inc[deg]	Azi[deg]	TVD[ft]	North[ft]	East[ft]	Dogleg [deg/100ft]	Vertical Section[ft]	Northing	Easting
25.00	0.00	0.000	25.00	0.00N	0.00E		0.00	1230033.01	3178199.76
12694.83	89.74	269.450	7897.00	611.93N	5167.78W	==>	5203.88	1230644.92	3173032.16

Interpolated Wellpath

MD[ft]	Inc[deg]	Azi[deg]	TVD[ft]	North[ft]	East[ft]	Dogleg [deg/100ft]	Vertical Section[ft]	Northing	Easting
0.00	0.00	0.000	0.00	0.00N	0.00E		0.00	1230033.01	3178199.76
25.00	0.00	0.000	25.00	0.00N	0.00E	==>	0.00	1230033.01	3178199.76
100.00	0.00	0.000	100.00	0.00N	0.00E	==>	0.00	1230033.01	3178199.76
200.00	0.00	0.000	200.00	0.00N	0.00E	==>	0.00	1230033.01	3178199.76
300.00	0.00	0.000	300.00	0.00N	0.00E	==>	0.00	1230033.01	3178199.76
400.00	0.00	0.000	400.00	0.00N	0.00E	==>	0.00	1230033.01	3178199.76
500.00	0.00	0.000	500.00	0.00N	0.00E	==>	0.00	1230033.01	3178199.76
600.00	0.00	0.000	600.00	0.00N	0.00E	==>	0.00	1230033.01	3178199.76
700.00	0.00	0.000	700.00	0.00N	0.00E	==>	0.00	1230033.01	3178199.76
800.00	0.00	0.000	800.00	0.00N	0.00E	==>	0.00	1230033.01	3178199.76
900.00	0.00	0.000	900.00	0.00N	0.00E	==>	0.00	1230033.01	3178199.76
1000.00	0.00	0.000	1000.00	0.00N	0.00E	==>	0.00	1230033.01	3178199.76
1100.00	0.00	0.000	1100.00	0.00N	0.00E	==>	0.00	1230033.01	3178199.76
1200.00	0.00	0.000	1200.00	0.00N	0.00E	==>	0.00	1230033.01	3178199.76
1225.00	0.00	0.000	1225.00	0.00N	0.00E	==>	0.00	1230033.01	3178199.76
1325.00	1.50	352.650	1324.99	0.97N	0.13W	2.00	0.24	1230033.98	3178199.64
1425.00	3.50	352.650	1424.89	5.30N	0.68W	2.00	1.30	1230038.31	3178199.08
1525.00	5.50	352.650	1524.58	13.08N	1.69W	2.00	3.21	1230046.09	3178198.08
1600.00	5.87	352.650	1599.19	20.63N	2.66W	==>	5.07	1230053.64	3178197.10
1700.00	5.87	352.650	1698.67	30.77N	3.97W	==>	7.56	1230063.78	3178195.79
1800.00	5.87	352.650	1798.14	40.92N	5.28W	==>	10.06	1230073.92	3178194.48
1900.00	5.87	352.650	1897.62	51.06N	6.59W	==>	12.55	1230084.07	3178193.17
2000.00	5.87	352.650	1997.09	61.20N	7.90W	==>	15.04	1230094.21	3178191.86
2100.00	5.87	352.650	2096.57	71.35N	9.21W	==>	17.53	1230104.35	3178190.55
2200.00	5.87	352.650	2196.04	81.49N	10.52W	==>	20.03	1230114.50	3178189.25
2300.00	5.87	352.650	2295.52	91.63N	11.83W	==>	22.52	1230124.64	3178187.94
2400.00	5.87	352.650	2395.00	101.78N	13.14W	==>	25.01	1230134.78	3178186.63
2500.00	5.87	352.650	2494.47	111.92N	14.45W	==>	27.51	1230144.93	3178185.32
2600.00	5.87	352.650	2593.95	122.06N	15.76W	==>	30.00	1230155.07	3178184.01
2700.00	5.87	352.650	2693.42	132.21N	17.06W	==>	32.49	1230165.21	3178182.70
2800.00	5.87	352.650	2792.90	142.35N	18.37W	==>	34.99	1230175.36	3178181.39
2900.00	5.87	352.650	2892.37	152.49N	19.68W	==>	37.48	1230185.50	3178180.08
3000.00	5.87	352.650	2991.85	162.64N	20.99W	==>	39.97	1230195.64	3178178.77
3100.00	5.87	352.650	3091.32	172.78N	22.30W	==>	42.46	1230205.78	3178177.46
3200.00	5.87	352.650	3190.80	182.92N	23.61W	==>	44.96	1230215.93	3178176.15
3300.00	5.87	352.650	3290.28	193.07N	24.92W	==>	47.45	1230226.07	3178174.84
3400.00	5.87	352.650	3389.75	203.21N	26.23W	==>	49.94	1230236.21	3178173.53
3500.00	5.87	352.650	3489.23	213.36N	27.54W	==>	52.44	1230246.36	3178172.23
3600.00	5.87	352.650	3588.70	223.50N	28.85W	==>	54.93	1230256.50	3178170.92
3700.00	5.87	352.650	3688.18	233.64N	30.16W	==>	57.42	1230266.64	3178169.61

All data is in Feet unless otherwise stated
Coordinates are from Slot MD's are from Rig and TVD's are from Rig (Planned Datum #1 5136.6ft above Mean Sea Level)
Vertical Section is from 0.00N 0.00E on azimuth 276.750 degrees
Bottom hole distance is 5203.88 Feet on azimuth 276.75 degrees from Wellhead
Calculation method uses Minimum Curvature method
Prepared by Integrated Petroleum Technologies, Inc.
Date Printed: 15-Oct-2014



INTEGRATED PETROLEUM TECHNOLOGIES, INC
SYSDRILL
Well Design Combined Report
Wellbore: Riverdale 15-2-7HC (PWB)



WARD PETROLEUM

Interpolated Wellpath									
MD[ft]	Inc[deg]	Azi[deg]	TVD[ft]	North[ft]	East[ft]	Dogleg [deg/100ft]	Vertical Section[ft]	Northing	Easting
3800.00	5.87	352.650	3787.65	243.79N	31.47W	==>	59.92	1230276.79	3178168.30
3900.00	5.87	352.650	3887.13	253.93N	32.78W	==>	62.41	1230286.93	3178166.99
4000.00	5.87	352.650	3986.60	264.07N	34.09W	==>	64.90	1230297.07	3178165.68
4100.00	5.87	352.650	4086.08	274.22N	35.39W	==>	67.39	1230307.22	3178164.37
4200.00	5.87	352.650	4185.56	284.36N	36.70W	==>	69.89	1230317.36	3178163.06
4300.00	5.87	352.650	4285.03	294.50N	38.01W	==>	72.38	1230327.50	3178161.75
4400.00	5.87	352.650	4384.51	304.65N	39.32W	==>	74.87	1230337.65	3178160.44
4500.00	5.87	352.650	4483.98	314.79N	40.63W	==>	77.37	1230347.79	3178159.13
4600.00	5.87	352.650	4583.46	324.93N	41.94W	==>	79.86	1230357.93	3178157.82
4700.00	5.87	352.650	4682.93	335.08N	43.25W	==>	82.35	1230368.08	3178156.51
4800.00	5.87	352.650	4782.41	345.22N	44.56W	==>	84.85	1230378.22	3178155.21
4900.00	5.87	352.650	4881.89	355.36N	45.87W	==>	87.34	1230388.36	3178153.90
5000.00	5.87	352.650	4981.36	365.51N	47.18W	==>	89.83	1230398.50	3178152.59
5100.00	5.87	352.650	5080.84	375.65N	48.49W	==>	92.32	1230408.65	3178151.28
5200.00	5.87	352.650	5180.31	385.79N	49.80W	==>	94.82	1230418.79	3178149.97
5300.00	5.87	352.650	5279.79	395.94N	51.11W	==>	97.31	1230428.93	3178148.66
5400.00	5.87	352.650	5379.26	406.08N	52.42W	==>	99.80	1230439.08	3178147.35
5500.00	5.87	352.650	5478.74	416.23N	53.73W	==>	102.30	1230449.22	3178146.04
5600.00	5.87	352.650	5578.21	426.37N	55.03W	==>	104.79	1230459.36	3178144.73
5700.00	5.87	352.650	5677.69	436.51N	56.34W	==>	107.28	1230469.51	3178143.42
5800.00	5.87	352.650	5777.17	446.66N	57.65W	==>	109.78	1230479.65	3178142.11
5900.00	5.87	352.650	5876.64	456.80N	58.96W	==>	112.27	1230489.79	3178140.80
6000.00	5.87	352.650	5976.12	466.94N	60.27W	==>	114.76	1230499.94	3178139.49
6100.00	5.87	352.650	6075.59	477.09N	61.58W	==>	117.25	1230510.08	3178138.18
6200.00	5.87	352.650	6175.07	487.23N	62.89W	==>	119.75	1230520.22	3178136.88
6300.00	5.87	352.650	6274.54	497.37N	64.20W	==>	122.24	1230530.37	3178135.57
6400.00	5.87	352.650	6374.02	507.52N	65.51W	==>	124.73	1230540.51	3178134.26
6500.00	5.87	352.650	6473.49	517.66N	66.82W	==>	127.23	1230550.65	3178132.95
6600.00	5.87	352.650	6572.97	527.80N	68.13W	==>	129.72	1230560.80	3178131.64
6700.00	5.87	352.650	6672.45	537.95N	69.44W	==>	132.21	1230570.94	3178130.33
6800.00	5.87	352.650	6771.92	548.09N	70.75W	==>	134.71	1230581.08	3178129.02
6900.00	5.87	352.650	6871.40	558.23N	72.06W	==>	137.20	1230591.22	3178127.71
7000.00	5.87	352.650	6970.87	568.38N	73.36W	==>	139.69	1230601.37	3178126.40
7100.00	5.87	352.650	7070.35	578.52N	74.67W	==>	142.18	1230611.51	3178125.09
7200.00	5.87	352.650	7169.82	588.66N	75.98W	==>	144.68	1230621.65	3178123.78
7300.00	10.24	303.860	7268.93	598.71N	83.80W	8.00	153.63	1230631.69	3178115.96
7400.00	17.40	288.430	7366.00	608.40N	105.41W	8.00	176.22	1230641.39	3178094.36
7500.00	25.07	282.030	7459.15	617.56N	140.37W	8.00	212.02	1230650.55	3178059.40
7600.00	32.89	278.510	7546.57	626.01N	188.02W	8.00	260.33	1230659.00	3178011.75
7700.00	40.77	276.230	7626.55	633.58N	247.44W	8.00	320.22	1230666.57	3177952.34
7800.00	48.69	274.570	7697.54	640.13N	317.45W	8.00	390.52	1230673.12	3177882.33
7900.00	56.62	273.280	7758.15	645.52N	396.70W	8.00	469.86	1230678.51	3177803.08
8000.00	64.57	272.210	7807.21	649.66N	483.65W	8.00	556.69	1230682.65	3177716.13
8100.00	72.52	271.270	7843.76	652.46N	576.60W	8.00	649.32	1230685.45	3177623.18
8200.00	80.48	270.410	7867.08	653.87N	673.75W	8.00	745.96	1230686.86	3177526.04
8300.00	88.44	269.590	7876.74	653.86N	773.20W	8.00	844.72	1230686.85	3177426.59
8400.00	89.74	269.450	7877.38	652.93N	873.19W	==>	943.91	1230685.91	3177326.60
8500.00	89.74	269.450	7877.84	651.97N	973.19W	==>	1043.10	1230684.96	3177226.61
8600.00	89.74	269.450	7878.29	651.02N	1073.18W	==>	1142.29	1230684.00	3177126.62
8700.00	89.74	269.450	7878.75	650.06N	1173.17W	==>	1241.48	1230683.05	3177026.63
8800.00	89.74	269.450	7879.21	649.11N	1273.17W	==>	1340.66	1230682.09	3176926.64
8900.00	89.74	269.450	7879.66	648.15N	1373.16W	==>	1439.85	1230681.14	3176826.65
9000.00	89.74	269.450	7880.12	647.20N	1473.16W	==>	1539.04	1230680.19	3176726.65
9100.00	89.74	269.450	7880.58	646.24N	1573.15W	==>	1638.23	1230679.23	3176626.66
9200.00	89.74	269.450	7881.03	645.29N	1673.15W	==>	1737.42	1230678.28	3176526.67
9300.00	89.74	269.450	7881.49	644.33N	1773.14W	==>	1836.61	1230677.32	3176426.68
9400.00	89.74	269.450	7881.95	643.38N	1873.14W	==>	1935.80	1230676.37	3176326.69
9500.00	89.74	269.450	7882.40	642.43N	1973.13W	==>	2034.98	1230675.41	3176226.70
9600.00	89.74	269.450	7882.86	641.47N	2073.12W	==>	2134.17	1230674.46	3176126.71
9700.00	89.74	269.450	7883.32	640.52N	2173.12W	==>	2233.36	1230673.50	3176026.72

All data is in Feet unless otherwise stated
Coordinates are from Slot MD's are from Rig and TVD's are from Rig (Planned Datum #1 5136.6ft above Mean Sea Level)
Vertical Section is from 0.00N 0.00E on azimuth 276.750 degrees
Bottom hole distance is 5203.88 Feet on azimuth 276.75 degrees from Wellhead
Calculation method uses Minimum Curvature method
Prepared by Integrated Petroleum Technologies, Inc.
Date Printed: 15-Oct-2014



WARD PETROLEUM

INTEGRATED PETROLEUM TECHNOLOGIES, INC
SYSDRILL
Well Design Combined Report
Wellbore: Riverdale 15-2-7HC (PWB)



Interpolated Wellpath									
MD[ft]	Inc[deg]	Azi[deg]	TVD[ft]	North[ft]	East[ft]	Dogleg [deg/100ft]	Vertical Section[ft]	Northing	Easting
9800.00	89.74	269.450	7883.77	639.56N	2273.11W	==>	2332.55	1230672.55	3175926.73
9900.00	89.74	269.450	7884.23	638.61N	2373.11W	==>	2431.74	1230671.60	3175826.73
10000.00	89.74	269.450	7884.69	637.65N	2473.10W	==>	2530.93	1230670.64	3175726.74
10100.00	89.74	269.450	7885.14	636.70N	2573.10W	==>	2630.11	1230669.69	3175626.75
10200.00	89.74	269.450	7885.60	635.74N	2673.09W	==>	2729.30	1230668.73	3175526.76
10300.00	89.74	269.450	7886.06	634.79N	2773.08W	==>	2828.49	1230667.78	3175426.77
10400.00	89.74	269.450	7886.51	633.83N	2873.08W	==>	2927.68	1230666.82	3175326.78
10500.00	89.74	269.450	7886.97	632.88N	2973.07W	==>	3026.87	1230665.87	3175226.79
10600.00	89.74	269.450	7887.43	631.93N	3073.07W	==>	3126.06	1230664.91	3175126.80
10700.00	89.74	269.450	7887.88	630.97N	3173.06W	==>	3225.24	1230663.96	3175026.80
10800.00	89.74	269.450	7888.34	630.02N	3273.06W	==>	3324.43	1230663.00	3174926.81
10900.00	89.74	269.450	7888.80	629.06N	3373.05W	==>	3423.62	1230662.05	3174826.82
11000.00	89.74	269.450	7889.26	628.11N	3473.05W	==>	3522.81	1230661.10	3174726.83
11100.00	89.74	269.450	7889.71	627.15N	3573.04W	==>	3622.00	1230660.14	3174626.84
11200.00	89.74	269.450	7890.17	626.20N	3673.03W	==>	3721.19	1230659.19	3174526.85
11300.00	89.74	269.450	7890.63	625.24N	3773.03W	==>	3820.37	1230658.23	3174426.86
11400.00	89.74	269.450	7891.08	624.29N	3873.02W	==>	3919.56	1230657.28	3174326.87
11500.00	89.74	269.450	7891.54	623.33N	3973.02W	==>	4018.75	1230656.32	3174226.88
11600.00	89.74	269.450	7892.00	622.38N	4073.01W	==>	4117.94	1230655.37	3174126.88
11700.00	89.74	269.450	7892.45	621.43N	4173.01W	==>	4217.13	1230654.41	3174026.89
11800.00	89.74	269.450	7892.91	620.47N	4273.00W	==>	4316.32	1230653.46	3173926.90
11900.00	89.74	269.450	7893.37	619.52N	4373.00W	==>	4415.51	1230652.50	3173826.91
12000.00	89.74	269.450	7893.82	618.56N	4472.99W	==>	4514.69	1230651.55	3173726.92
12100.00	89.74	269.450	7894.28	617.61N	4572.98W	==>	4613.88	1230650.60	3173626.93
12200.00	89.74	269.450	7894.74	616.65N	4672.98W	==>	4713.07	1230649.64	3173526.94
12300.00	89.74	269.450	7895.19	615.70N	4772.97W	==>	4812.26	1230648.69	3173426.95
12400.00	89.74	269.450	7895.65	614.74N	4872.97W	==>	4911.45	1230647.73	3173326.96
12500.00	89.74	269.450	7896.11	613.79N	4972.96W	==>	5010.64	1230646.78	3173226.96
12600.00	89.74	269.450	7896.56	612.83N	5072.96W	==>	5109.82	1230645.82	3173126.97
12694.83	89.74	269.450	7897.00	611.93N	5167.78W	==>	5203.88	1230644.92	3173032.16

All data is in Feet unless otherwise stated
Coordinates are from Slot MD's are from Rig and TVD's are from Rig (Planned Datum #1 5136.6ft above Mean Sea Level)
Vertical Section is from 0.00N 0.00E on azimuth 276.750 degrees
Bottom hole distance is 5203.88 Feet on azimuth 276.75 degrees from Wellhead
Calculation method uses Minimum Curvature method
Prepared by Integrated Petroleum Technologies, Inc.
Date Printed: 15-Oct-2014



WARD PETROLEUM

INTEGRATED PETROLEUM TECHNOLOGIES, INC
SYSDRILL
Well Design Combined Report
Wellbore: Riverdale 15-2-7HC (PWB)



Hole Sections								
Diameter [in]	Start MD[ft]	Start TVD[ft]	Start North[ft]	Start East[ft]	End MD[ft]	End TVD[ft]	End North[ft]	End East[ft]
13 1/2	25.00	25.00	0.00N	0.00E	1200.00	1200.00	0.00N	0.00E
8 3/4	1200.00	1200.00	0.00N	0.00E	8316.00	7877.00	653.73N	789.20W
6 1/8	8316.00	7877.00	653.73N	789.20W	12694.00	7896.99	611.94N	5166.95W

Casings								
Name	Top MD[ft]	Top TVD[ft]	Top North[ft]	Top East[ft]	Shoe MD[ft]	Shoe TVD[ft]	Shoe North[ft]	Shoe East[ft]
9 5/8in Surface Casing	25.00	25.00	0.00N	0.00E	1200.00	1200.00	0.00N	0.00E
7.0in Intermediate Casing	25.00	25.00	0.00N	0.00E	8316.00	7877.00	653.73N	789.20W
4 1/2in Production Liner	8116.00	7848.39	652.78N	591.91W	12694.00	7896.99	611.94N	5166.95W

Targets								
Name	North[ft]	East[ft]	TVD[ft]	Latitude	Longitude	Northing	Easting	Last Revised
Ward Riverdale 15-2-7HC BH	611.93N	5167.78W	7897.00	39.96485000	-104.88268000	1230644.92	3173032.16	30-Sep-2014
Ward Riverdale 15-2-7HC LP	653.72N	789.57W	7877.00	39.96488000	-104.86706000	1230686.71	3177410.22	30-Sep-2014

Survey Tool Program					
Reference	Survey Name	MD[ft]	TVD[ft]	Survey Tool	Error Model
305038	Planned	12694.83	7897.00	WdW Rate Gyro	Standard

Notes

All data is in Feet unless otherwise stated
Coordinates are from Slot MD's are from Rig and TVD's are from Rig (Planned Datum #1 5136.6ft above Mean Sea Level)
Vertical Section is from 0.00N 0.00E on azimuth 276.750 degrees
Bottom hole distance is 5203.88 Feet on azimuth 276.75 degrees from Wellhead
Calculation method uses Minimum Curvature method
Prepared by Integrated Petroleum Technologies, Inc.
Date Printed: 15-Oct-2014



WARD PETROLEUM

SYSDRILL
Closest Approach + Clearance Factor Summary Report
Wellbore: Riverdale 15-2-7HC (PWB)



Ellipse separations are reported ONLY if BOTH wells have uncertainty data
Only Depth and Magnetic Reference Field error terms are correlated across tie points
Proximities beyond 2500.00ft with expansion rate of 0.00ft/1000ft are not reported
Scan limit is calculated on CENTRE to CENTRE distance

Summary data uses Closest Approach clearance calculation for all minima
Hole size/Casings ARE included
Hole size/Casings are NOT subtracted from Centre-Centre distance
Confidence limit of 95.00% / 2.80 SD.

Wellbore		
Name	Created	Last Revised
Riverdale 15-2-7HC (PWB)	30-Sep-2014	3-Oct-2014

Well		
Name	Government ID	Last Revised
Riverdale 15-2-7HC		1-Oct-2014

Slot						
Name	Grid Northing	Grid Easting	Latitude	Longitude	North	East
Slot #12	1230033.0087	3178199.7637	39.96307000	-104.86426000	21.92S	8.25W

Installation				
Name	Easting	Northing	Coord System Name	North Alignment
Riverdale	3178208.0159	1230054.9248	CO83-NF on NORTH AMERICAN DATUM 1983 datum	Grid

Field				
Name	Easting	Northing	Coord System Name	North Alignment
West Brighton	3178196.4983	1231661.3262	CO83-NF on NORTH AMERICAN DATUM 1983 datum	Grid

Clearance Summary								
Offset Wellbore	Offset Structure	Separation [ft]	MD[ft]	Diverging From[ft]	Ellipse Separation [ft]	Ellipse MD[ft]	Clearance Factor	Clearance MD[ft]
Riverdale 14-4-6HC (PWB)	Riverdale	7.29	1558.91	7853.62	4.16	1558.91	2.32	1566.99
Riverdale 14-4-7HN (PWB)	Riverdale	10.18	1435.76	7645.54	7.25	1435.76	1.52	7645.54
Riverdale 15-2-8HN (PWB)	Riverdale	14.57	1250.00	8316.37	11.73	1189.70	5.13	1189.70
Riverdale 15-2-6HN (PWB)	Riverdale	14.57	1225.00	12692.77	11.73	1189.70	5.13	1189.70
Riverdale 14-4-8HC (PWB)	Riverdale	23.42	1250.00	7788.11	20.58	1189.70	8.24	1189.70
Riverdale 14-4-5HN (PWB)	Riverdale	23.42	1189.70	7731.70	20.58	1189.70	8.22	1566.99
Riverdale 15-2-9HC (PWB)	Riverdale	29.14	1250.00	1250.00	26.30	1189.70	9.28	12689.04
Riverdale 15-2-5HC (PWB)	Riverdale	29.14	1200.11	8587.99	26.30	1189.70	9.30	12689.04
Riverdale 14-4-9HN (PWB)	Riverdale	37.39	1250.00	7574.72	34.55	1189.70	13.16	1189.70
Riverdale 15-2-10HN (PWB)	Riverdale	43.71	1250.00	12694.83	40.87	1189.70	14.31	12689.04
Riverdale 14-4-10HC (PWB)	Riverdale	51.69	1250.00	7737.86	48.85	1189.70	18.19	1189.70
Riverdale	Riverdale	61.93	1250.00	1250.00	59.09	1189.70	18.70	12689.04

All data is in Feet unless otherwise stated
Coordinates are from Slot MD's are from Rig and TVD's are from Rig (Planned Datum #1 5136.6ft above Mean Sea Level)
Vertical Section is from 0.00N 0.00E on azimuth 276.750 degrees
Prepared by Integrated Petroleum Technologies, Inc.
Date Printed: 15-Oct-2014



WARD PETROLEUM

SYSDRILL
Closest Approach + Clearance Factor Summary Report
Wellbore: Riverdale 15-2-7HC (PWB)



Offset Wellbore	Offset Structure	Separation [ft]	MD[ft]	Diverging From[ft]	Ellipse Separation [ft]	Ellipse MD[ft]	Clearance Factor	Clearance MD[ft]
15-2-11HC (PWB)								
Riverdale 14-4-11HN (PWB)	Riverdale	69.72	1250.00	1250.00	66.88	1189.70	24.53	1189.70
Riverdale 15-2-12HN (PWB)	Riverdale	76.50	1247.98	1247.98	73.66	1189.70	23.57	12689.04
Riverdale 14-4-12HC (PWB)	Riverdale	84.21	1247.56	1247.56	81.36	1189.70	29.63	1189.70
Riverdale 22-2-1HC (PWB)	Riverdale	91.07	1197.18	1197.18	88.22	1197.18	31.91	1197.18
Riverdale 23-4-1HN (PWB)	Riverdale	98.72	1197.17	1197.17	95.86	1197.17	34.59	1197.17
W United Bank of Denver 1 (AWB)	Offsets	197.60	1250.00	1250.00	187.94	1189.70	19.69	1468.57
W Ehler, John 15 (AWB)	Offsets	965.14	2846.52	2846.52	949.35	3141.80	44.91	5159.51
W RC Nauman 2 (AWB)	Offsets	1031.50	5421.98	5421.98	1009.74	5421.98	47.41	5421.98
W Adams County 1 (AWB)	Offsets	1320.72	1250.00	1250.00	1311.31	1189.70	80.63	5274.34
W Nauman 1-14 (AWB)	Offsets	1337.21	7308.46	7308.46	1305.13	7308.46	41.11	7554.53
W United Bank of Denver 3 (AWB)	Offsets	1355.14	1419.36	1419.36	1344.39	1895.08	64.02	5257.94
W Ehler, John 18 (AWB)	Offsets	1362.65	5340.40	5340.40	1340.99	5340.40	62.89	5356.36
W Ehler, John 20 (AWB)	Offsets	1664.20	1250.00	1250.00	1654.77	1189.70	90.35	5274.34
W RC Nauman 4 (AWB)	Offsets	1942.38	5283.74	5283.74	1920.22	5283.74	87.47	5389.17
W United Bank of Denver 2 (AWB)	Offsets	2099.43	1250.00	1250.00	2090.32	1189.70	111.33	5307.15
W Ehler, John 22 (AWB)	Offsets	2276.16	4404.92	4404.92	2255.35	4995.47	101.48	5389.17
W RC Nauman 1 (AWB)	Offsets	2283.71	5454.79	5454.79	2262.30	5454.79	106.60	5525.00
W Ehler, John 19 (AWB)	Offsets	2426.70	5438.39	5438.39	2405.40	5438.39	113.80	5520.41
W Ehler, John 11 (AWB)	Offsets	2432.75	5343.99	5343.99	2410.45	5343.99	108.78	5504.00