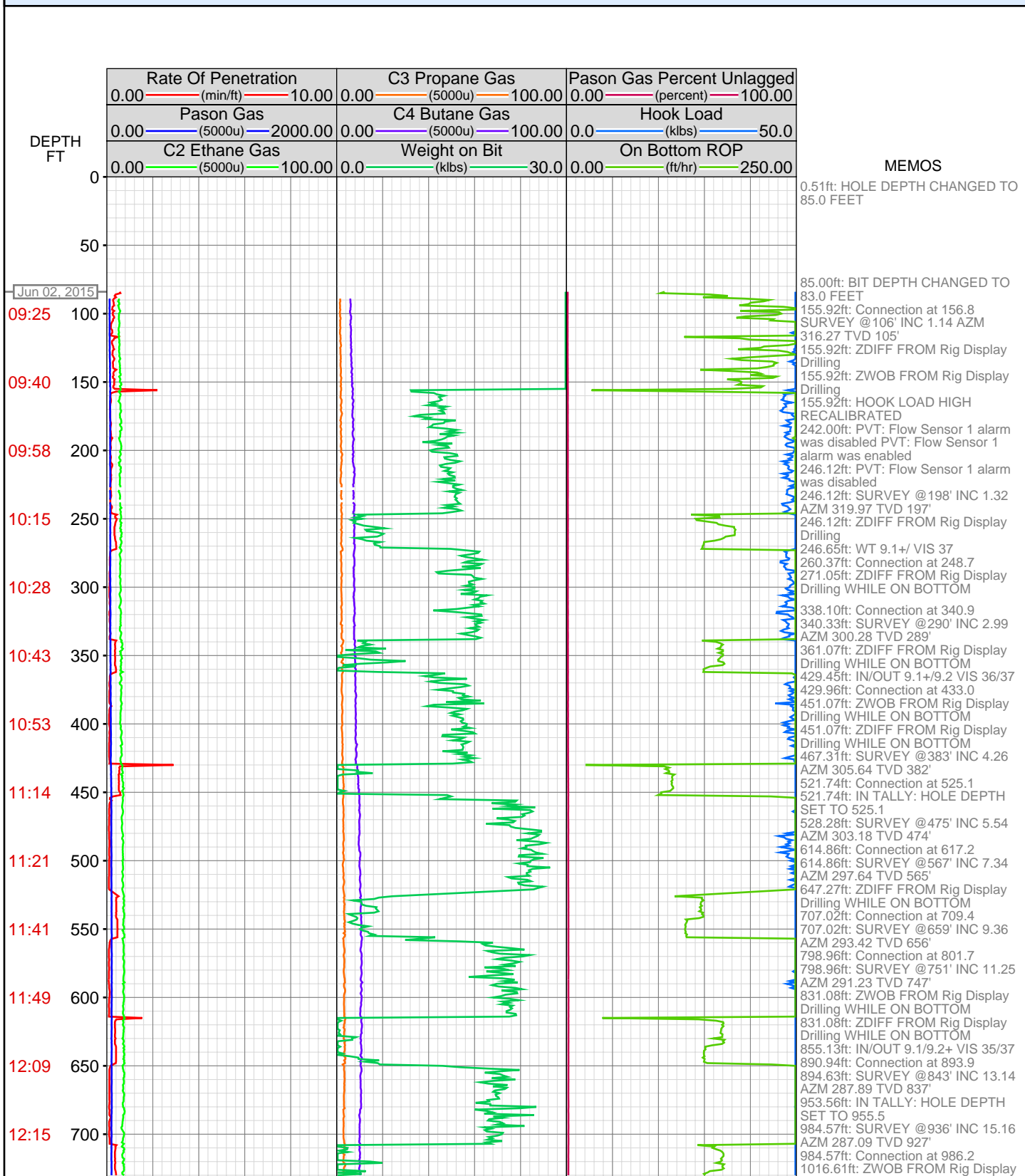


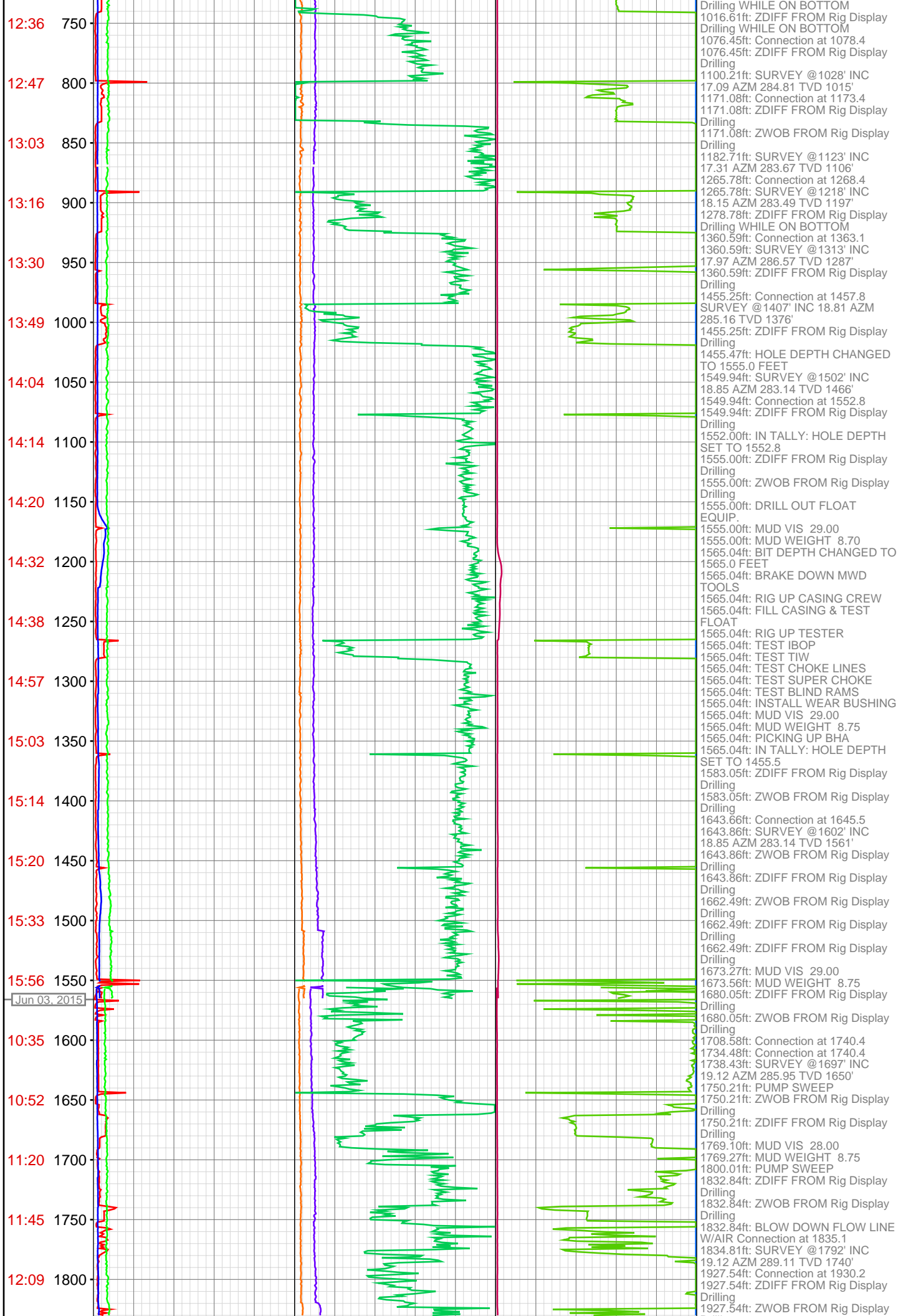
# DataHub EDR Log

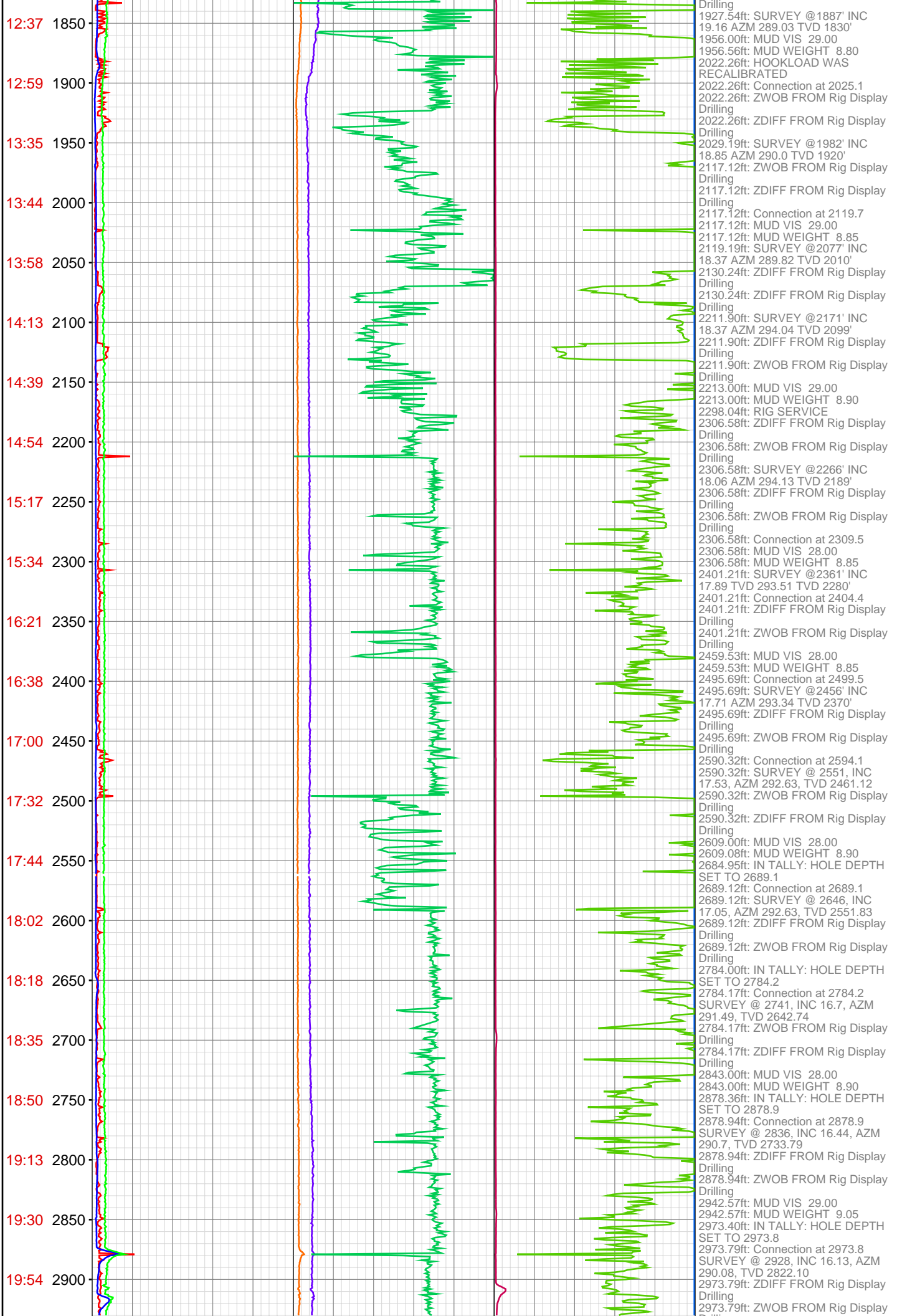
Sat Jun 06, 2015 08:43:34  
Well Dossier 1433252096  
Andy McCarthy

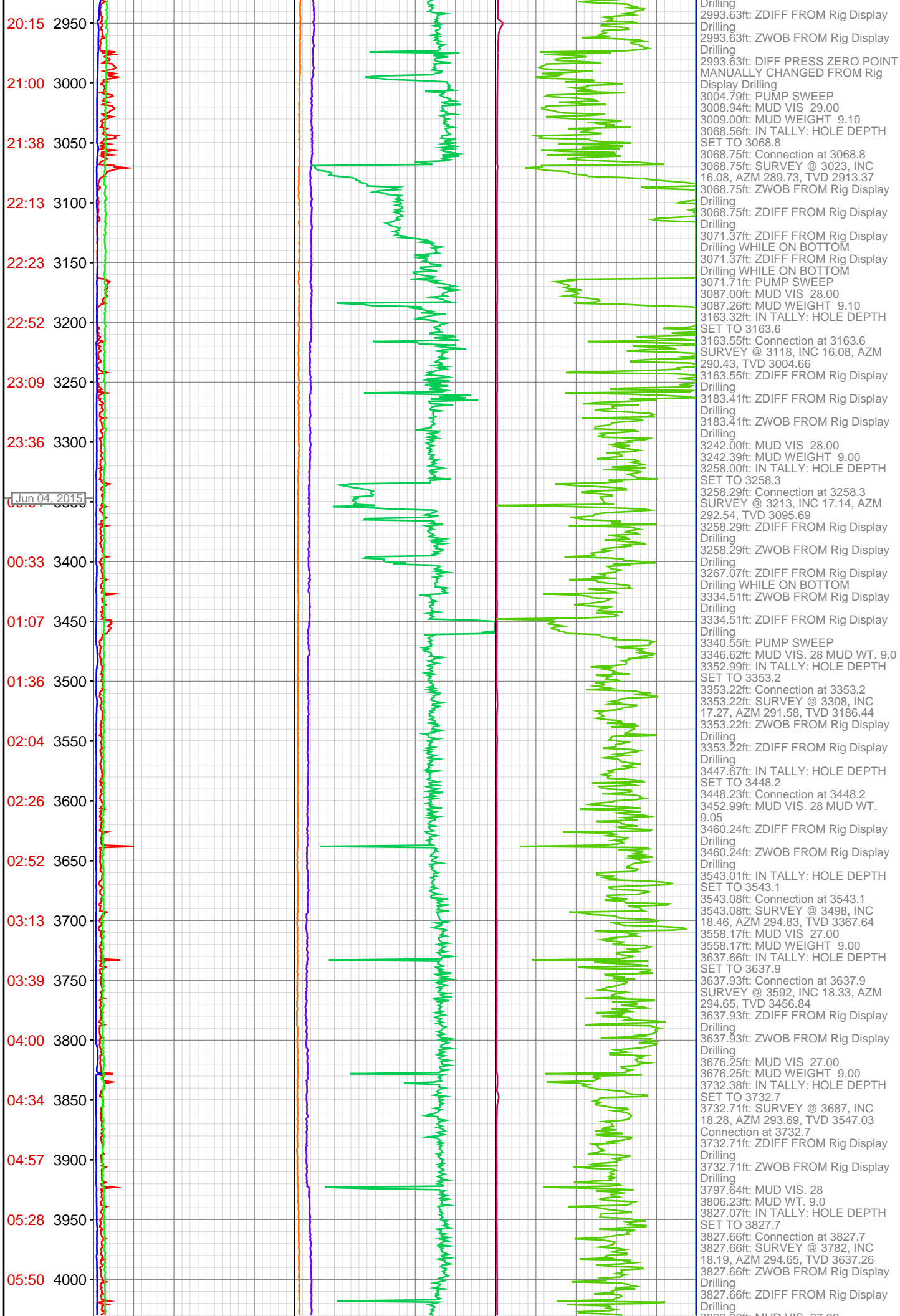
**OPERATOR:** Piceance Energy, LLC  
**WELL:** GUNDERSON 29-08M  
**FIELD:**  
**LOCATION:** SEC 29 TWP 9S RNG 96W  
**COUNTRY:** USA  
**RIG:** Pat-UTI 306

**CONTRACTOR:** Patterson-UTI Drilling Company  
**UNIQUE WELL ID:**  
**SPUD DATE:** Jun 02, 2015 09:00  
**RELEASE DATE:**



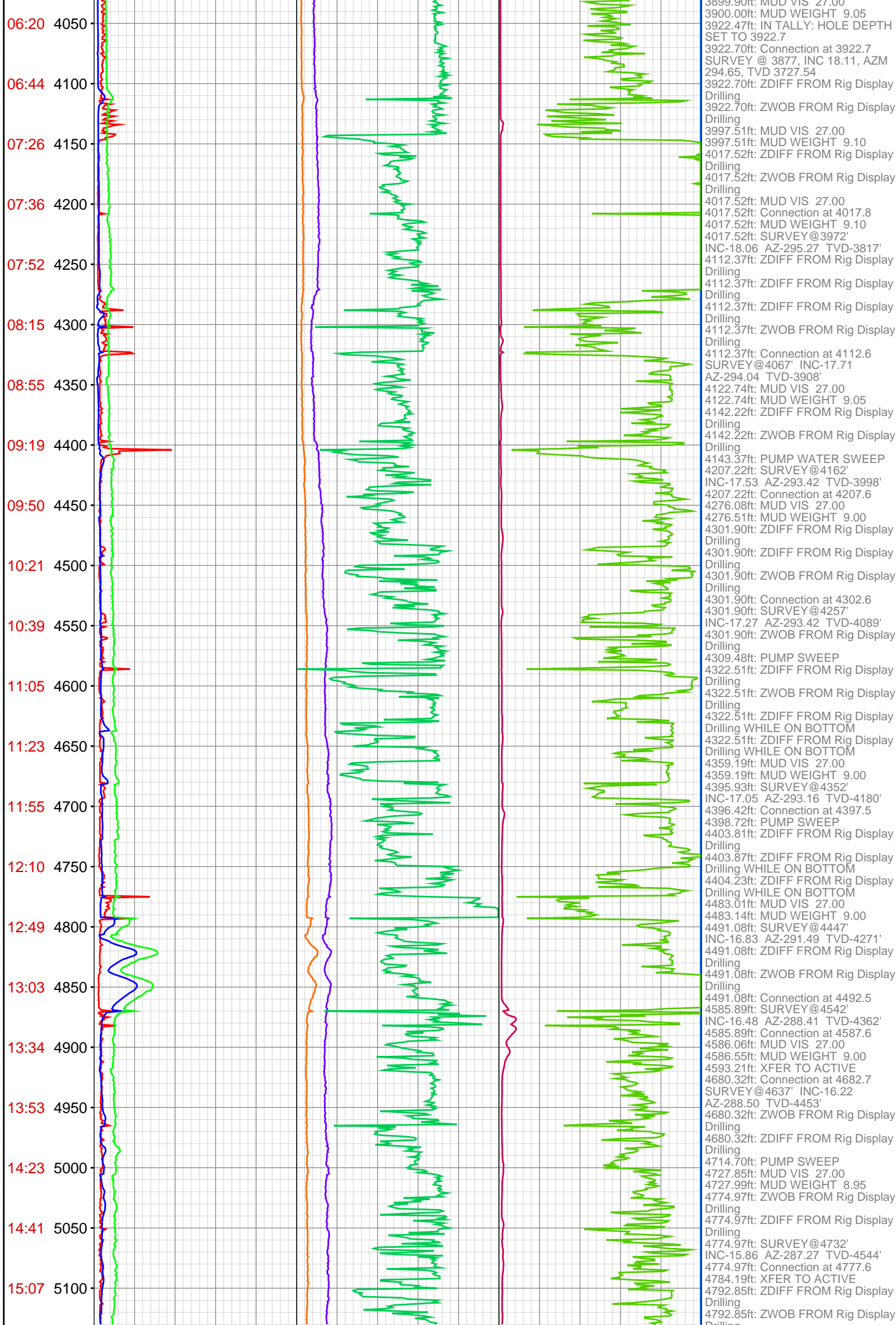




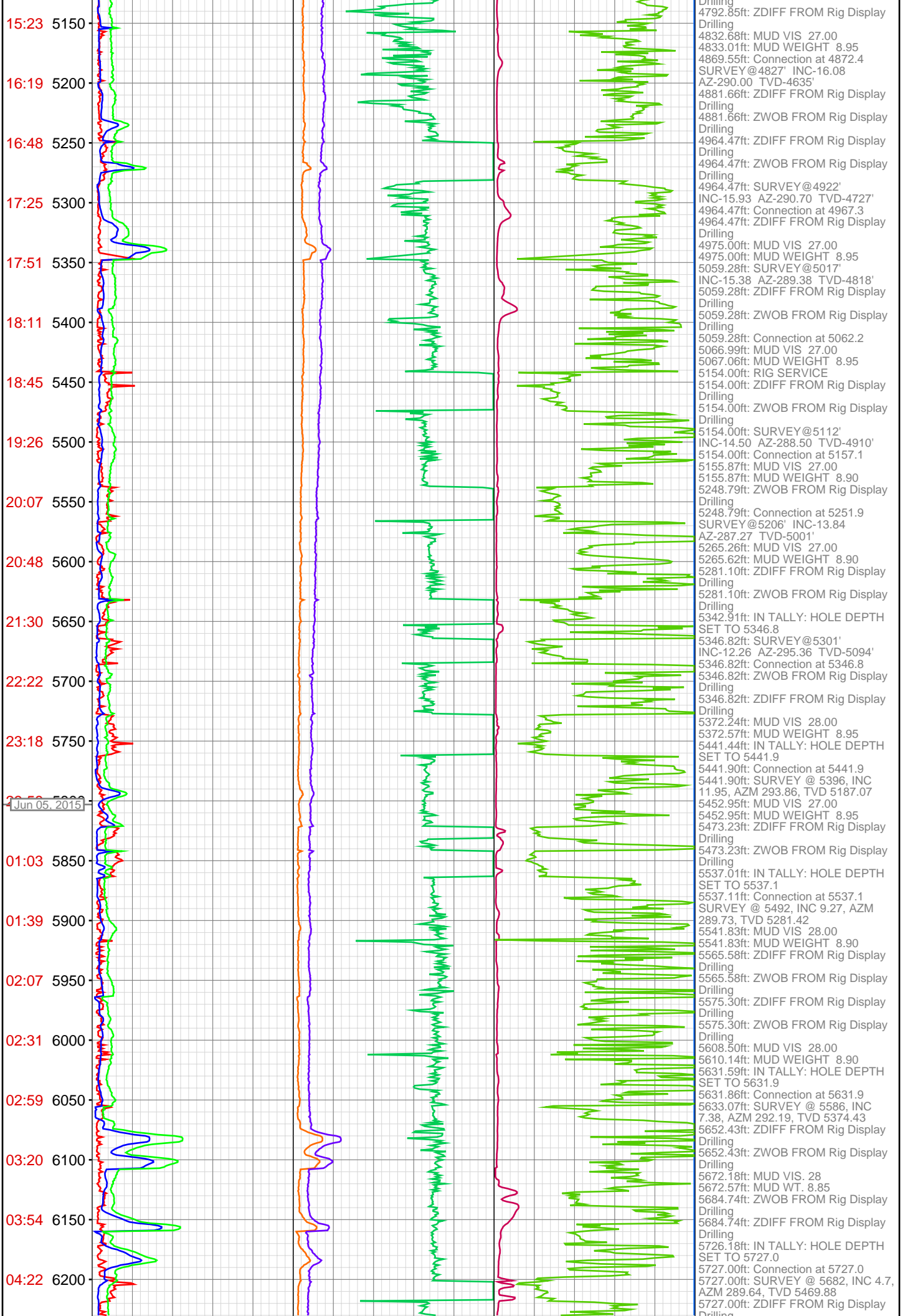


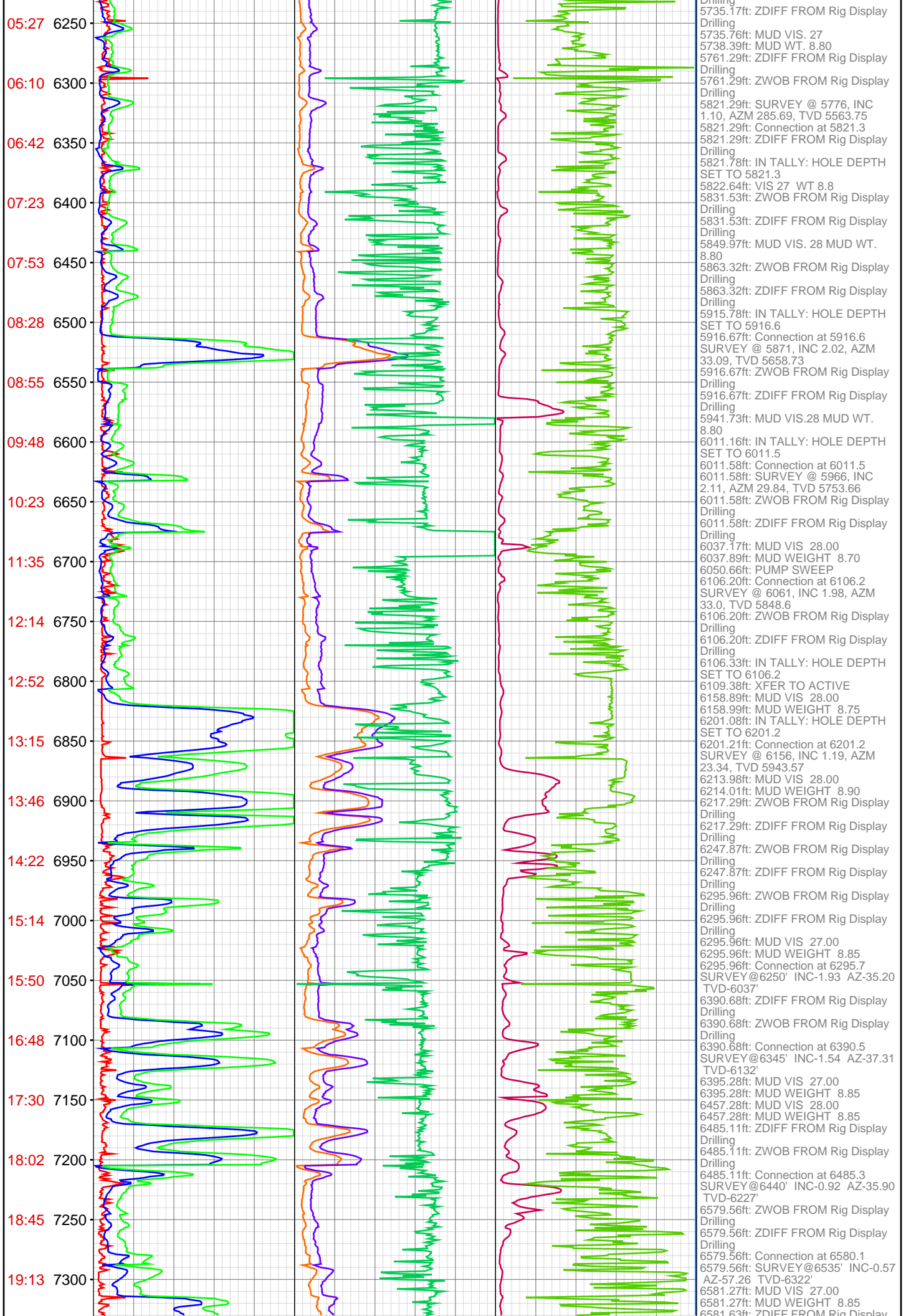
Drilling  
2993.63ft: ZDIFF FROM Rig Display  
Drilling  
2993.63ft: ZWOB FROM Rig Display  
Drilling  
2993.63ft: DIFF PRESS ZERO POINT  
MANUALLY CHANGED FROM Rig  
Display Drilling  
3004.79ft: PUMP SWEEP  
3008.94ft: MUD VIS 29.00  
3009.00ft: MUD WEIGHT 9.10  
3068.56ft: IN TALLY: HOLE DEPTH  
SET TO 3068.8  
3068.75ft: Connection at 3068.8  
3068.75ft: SURVEY @ 3023, INC  
16.08, AZM 289.73, TVD 2913.37  
3068.75ft: ZWOB FROM Rig Display  
Drilling  
3068.75ft: ZDIFF FROM Rig Display  
Drilling  
3071.37ft: ZDIFF FROM Rig Display  
Drilling WHILE ON BOTTOM  
3071.37ft: ZDIFF FROM Rig Display  
Drilling WHILE ON BOTTOM  
3071.71ft: PUMP SWEEP  
3087.00ft: MUD VIS 28.00  
3087.26ft: MUD WEIGHT 9.10  
3163.32ft: IN TALLY: HOLE DEPTH  
SET TO 3163.6  
3163.55ft: Connection at 3163.6  
SURVEY @ 3118, INC 16.08, AZM  
290.43, TVD 3004.66  
3163.55ft: ZDIFF FROM Rig Display  
Drilling  
3183.41ft: ZDIFF FROM Rig Display  
Drilling  
3183.41ft: ZWOB FROM Rig Display  
Drilling  
3242.00ft: MUD VIS 28.00  
3242.39ft: MUD WEIGHT 9.00  
3258.00ft: IN TALLY: HOLE DEPTH  
SET TO 3258.3  
3258.29ft: Connection at 3258.3  
SURVEY @ 3213, INC 17.14, AZM  
292.54, TVD 3095.69  
3258.29ft: ZDIFF FROM Rig Display  
Drilling  
3258.29ft: ZWOB FROM Rig Display  
Drilling  
3267.07ft: ZDIFF FROM Rig Display  
Drilling WHILE ON BOTTOM  
3334.51ft: ZWOB FROM Rig Display  
Drilling  
3334.51ft: ZDIFF FROM Rig Display  
Drilling  
3340.55ft: PUMP SWEEP  
3346.62ft: MUD VIS. 28 MUD WT. 9.0  
3352.99ft: IN TALLY: HOLE DEPTH  
SET TO 3353.2  
3353.22ft: Connection at 3353.2  
3353.22ft: SURVEY @ 3308, INC  
17.27, AZM 291.58, TVD 3186.44  
3353.22ft: ZWOB FROM Rig Display  
Drilling  
3353.22ft: ZDIFF FROM Rig Display  
Drilling  
3447.67ft: IN TALLY: HOLE DEPTH  
SET TO 3448.2  
3448.23ft: Connection at 3448.2  
3452.99ft: MUD VIS. 28 MUD WT.  
9.05  
3460.24ft: ZDIFF FROM Rig Display  
Drilling  
3460.24ft: ZWOB FROM Rig Display  
Drilling  
3543.01ft: IN TALLY: HOLE DEPTH  
SET TO 3543.1  
3543.08ft: Connection at 3543.1  
3543.08ft: SURVEY @ 3498, INC  
18.46, AZM 294.83, TVD 3367.64  
3558.17ft: MUD VIS 27.00  
3558.17ft: MUD WEIGHT 9.00  
3637.66ft: IN TALLY: HOLE DEPTH  
SET TO 3637.9  
3637.93ft: Connection at 3637.9  
SURVEY @ 3592, INC 18.33, AZM  
294.65, TVD 3456.84  
3637.93ft: ZDIFF FROM Rig Display  
Drilling  
3637.93ft: ZWOB FROM Rig Display  
Drilling  
3676.25ft: MUD VIS 27.00  
3676.25ft: MUD WEIGHT 9.00  
3732.38ft: IN TALLY: HOLE DEPTH  
SET TO 3732.7  
3732.71ft: SURVEY @ 3687, INC  
18.28, AZM 293.69, TVD 3547.03  
Connection at 3732.7  
3732.71ft: ZDIFF FROM Rig Display  
Drilling  
3732.71ft: ZWOB FROM Rig Display  
Drilling  
3797.64ft: MUD VIS. 28  
3806.23ft: MUD WT. 9.0  
3827.07ft: IN TALLY: HOLE DEPTH  
SET TO 3827.7  
3827.66ft: Connection at 3827.7  
3827.66ft: SURVEY @ 3782, INC  
18.19, AZM 294.65, TVD 3637.26  
3827.66ft: ZWOB FROM Rig Display  
Drilling  
3827.66ft: ZDIFF FROM Rig Display  
Drilling  
3827.66ft: MUD VIS. 27.00



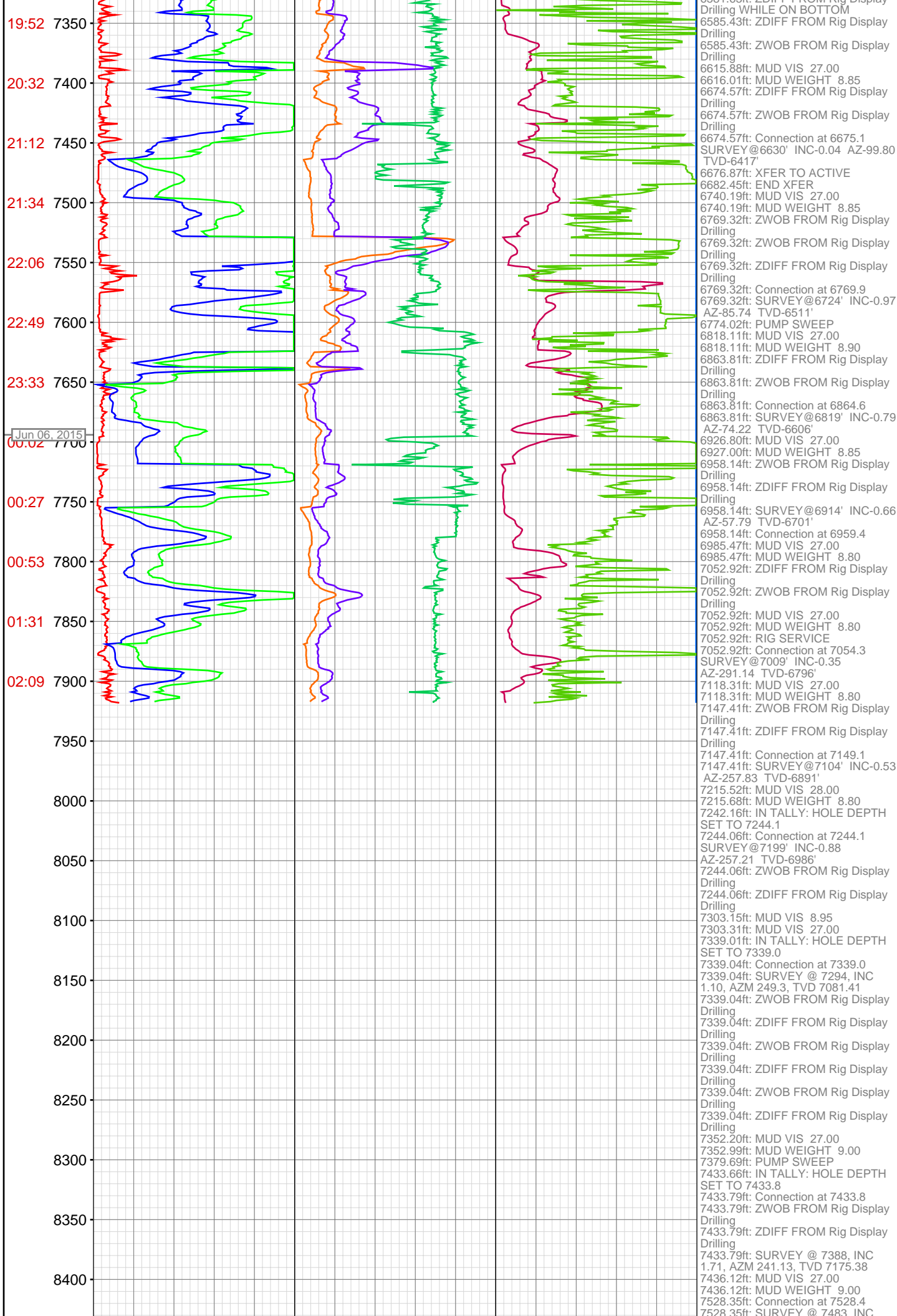


3899.90ft: MUD VIS 27.00  
3900.00ft: MUD WEIGHT 9.05  
3922.47ft: IN TALLY: HOLE DEPTH  
SET TO 3922.7  
3922.70ft: Connection at 3922.7  
SURVEY @ 3877, INC 18.11, AZM  
294.65, TVD 3727.54  
3922.70ft: ZDIFF FROM Rig Display  
Drilling  
3922.70ft: ZWOB FROM Rig Display  
Drilling  
3997.51ft: MUD VIS 27.00  
3997.51ft: MUD WEIGHT 9.10  
4017.52ft: ZDIFF FROM Rig Display  
Drilling  
4017.52ft: ZWOB FROM Rig Display  
Drilling  
4017.52ft: MUD VIS 27.00  
4017.52ft: Connection at 4017.8  
4017.52ft: MUD WEIGHT 9.10  
4017.52ft: SURVEY@3972'  
INC-18.06 AZ-295.27 TVD-3817'  
4112.37ft: ZDIFF FROM Rig Display  
Drilling  
4112.37ft: ZDIFF FROM Rig Display  
Drilling  
4112.37ft: ZDIFF FROM Rig Display  
Drilling  
4112.37ft: ZWOB FROM Rig Display  
Drilling  
4112.37ft: Connection at 4112.6  
SURVEY@4067' INC-17.71  
AZ-294.04 TVD-3908'  
4122.74ft: MUD VIS 27.00  
4122.74ft: MUD WEIGHT 9.05  
4142.22ft: ZDIFF FROM Rig Display  
Drilling  
4142.22ft: ZWOB FROM Rig Display  
Drilling  
4143.37ft: PUMP WATER SWEEP  
4207.22ft: SURVEY@4162'  
INC-17.53 AZ-293.42 TVD-3998'  
4207.22ft: Connection at 4207.6  
4276.08ft: MUD VIS 27.00  
4276.51ft: MUD WEIGHT 9.00  
4301.90ft: ZDIFF FROM Rig Display  
Drilling  
4301.90ft: ZDIFF FROM Rig Display  
Drilling  
4301.90ft: ZWOB FROM Rig Display  
Drilling  
4301.90ft: Connection at 4302.6  
4301.90ft: SURVEY@4257'  
INC-17.27 AZ-293.42 TVD-4089'  
4301.90ft: ZWOB FROM Rig Display  
Drilling  
4309.48ft: PUMP SWEEP  
4322.51ft: ZDIFF FROM Rig Display  
Drilling  
4322.51ft: ZWOB FROM Rig Display  
Drilling  
4322.51ft: ZDIFF FROM Rig Display  
Drilling WHILE ON BOTTOM  
4322.51ft: ZDIFF FROM Rig Display  
Drilling WHILE ON BOTTOM  
4359.19ft: MUD VIS 27.00  
4359.19ft: MUD WEIGHT 9.00  
4395.93ft: SURVEY@4352'  
INC-17.05 AZ-293.16 TVD-4180'  
4396.42ft: Connection at 4397.5  
4398.72ft: PUMP SWEEP  
4403.81ft: ZDIFF FROM Rig Display  
Drilling  
4403.87ft: ZDIFF FROM Rig Display  
Drilling WHILE ON BOTTOM  
4404.23ft: ZDIFF FROM Rig Display  
Drilling WHILE ON BOTTOM  
4483.01ft: MUD VIS 27.00  
4483.14ft: MUD WEIGHT 9.00  
4491.08ft: SURVEY@4447'  
INC-16.83 AZ-291.49 TVD-4271'  
4491.08ft: ZDIFF FROM Rig Display  
Drilling  
4491.08ft: ZWOB FROM Rig Display  
Drilling  
4491.08ft: Connection at 4492.5  
4585.89ft: SURVEY@4542'  
INC-16.48 AZ-288.41 TVD-4362'  
4585.89ft: Connection at 4587.6  
4586.06ft: MUD VIS 27.00  
4586.55ft: MUD WEIGHT 9.00  
4593.21ft: XFER TO ACTIVE  
4680.32ft: Connection at 4682.7  
SURVEY@4637' INC-16.22  
AZ-288.50 TVD-4453'  
4680.32ft: ZWOB FROM Rig Display  
Drilling  
4680.32ft: ZDIFF FROM Rig Display  
Drilling  
4714.70ft: PUMP SWEEP  
4727.85ft: MUD VIS 27.00  
4727.99ft: MUD WEIGHT 8.95  
4774.97ft: ZWOB FROM Rig Display  
Drilling  
4774.97ft: ZDIFF FROM Rig Display  
Drilling  
4774.97ft: SURVEY@4732'  
INC-15.86 AZ-287.27 TVD-4544'  
4774.97ft: Connection at 4777.6  
4784.19ft: XFER TO ACTIVE  
4792.85ft: ZDIFF FROM Rig Display  
Drilling  
4792.85ft: ZWOB FROM Rig Display  
Drilling











8450	1.89, AZM 245.35, TVD 7270.33 7528.35ft: ZWOB FROM Rig Display Drilling 7528.35ft: ZDIFF FROM Rig Display Drilling 7528.45ft: IN TALLY: HOLE DEPTH SET TO 7528.4 7546.62ft: MUD VIS 29.00 7546.62ft: MUD WEIGHT 9.10 7560.01ft: STRING WEIGHT MANUALLY CHANGED FROM Rig Display Drilling WHILE ON BOTTOM 7614.53ft: MUD VIS 32.00 7614.67ft: MUD WEIGHT 9.30 7623.20ft: IN TALLY: HOLE DEPTH SET TO 7623.3 7623.29ft: Connection at 7623.3 SURVEY @ 7578, INC 2.15, AZM 260.11, TVD 7365.27 7623.29ft: ZWOB FROM Rig Display Drilling 7623.29ft: ZDIFF FROM Rig Display Drilling 7691.01ft: MUD VIS 39.00 7691.01ft: MUD WEIGHT 9.30 7718.01ft: IN TALLY: HOLE DEPTH SET TO 7718.2 7718.18ft: Connection at 7718.2 SURVEY @ 7673, INC 2.81, AZM 261.96, TVD 7460.18 7718.18ft: ZWOB FROM Rig Display Drilling 7718.18ft: ZDIFF FROM Rig Display Drilling 7778.94ft: PUMP SWEEP 7808.01ft: MUD VIS 45.00 7808.30ft: MUD WEIGHT 9.40 7812.99ft: IN TALLY: HOLE DEPTH SET TO 7813.2 7813.22ft: Connection at 7813.2 SURVEY @ 7768, INC 2.94, AZM 255.72, TVD 7555.06 7813.22ft: ZWOB FROM Rig Display Drilling 7813.22ft: ZDIFF FROM Rig Display Drilling 7886.12ft: MUD VIS 52.00 7886.12ft: MUD WEIGHT 9.50 7908.01ft: IN TALLY: HOLE DEPTH SET TO 7908.4 7908.40ft: Connection at 7908.4 7908.40ft: PUMP OUT CELLAR 7908.40ft: ZWOB FROM Rig Display Drilling 7908.40ft: ZDIFF FROM Rig Display Drilling 7909.61ft: PUMP SWEEP PUMP OUT CELLAR 7918.08ft: SURVEY @ 7873, INC 2.99, AZM 253.7, TVD 7659.92 7918.08ft: MUD WT.9.6 MUD VIS. 55 7918.08ft: PUMP PILL 7918.08ft: FILL PIPE 7918.08ft: ZDIFF FROM Rig Display Drilling 7918.08ft: ZDIFF FROM Rig Display Drilling 7918.08ft: ZWOB FROM Rig Display Drilling 7918.08ft: PUMPED 1ST SWEEP 7918.08ft: PUMPED 2ND SWEEP 7918.08ft: ZWOB FROM Rig Display Drilling 7918.08ft: ZDIFF FROM Rig Display Drilling 7918.08ft: MUD VIS 53.00 7918.08ft: MUD WEIGHT 9.60 7918.08ft: ZDIFF FROM Rig Display Drilling 7918.08ft: PUMP SLUG 8008.01ft: ATTEMPTED TO ZERO TOTAL STROKES 8008.01ft: ATTEMPTED TO SET HOLE DEPTH TO 0.00 FEET
8500	
8550	
8600	
8650	
8700	
8750	
8800	
8850	
8900	
8950	
9000	
9050	
9100	
9150	
9200	