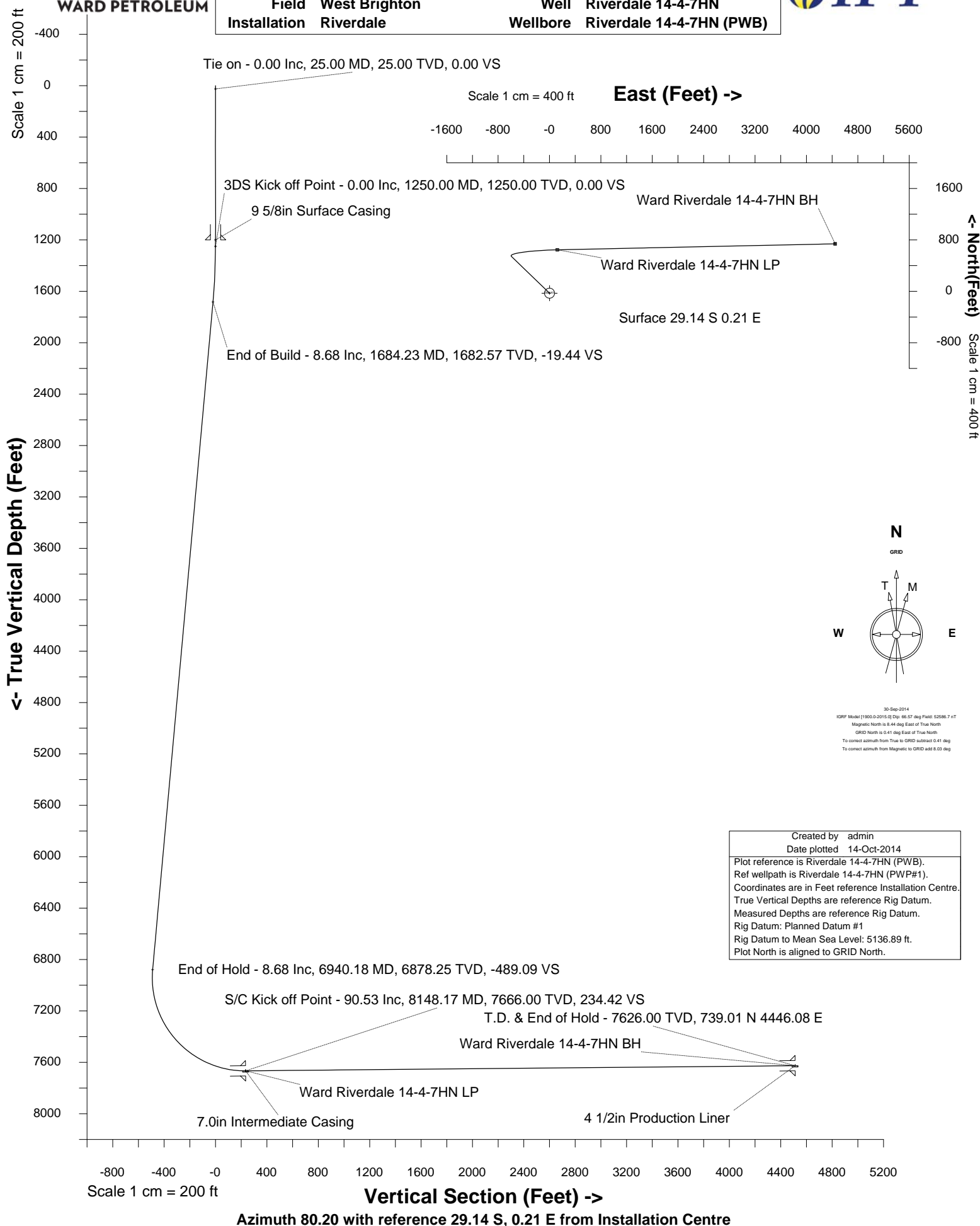




WARD PETROLEUM

WARD PETROLEUM

Location	ADAMS COUNTY, CO	Slot	Slot #3
Field	West Brighton	Well	Riverdale 14-4-7HN
Installation	Riverdale	Wellbore	Riverdale 14-4-7HN (PWB)





WARD PETROLEUM

INTEGRATED PETROLEUM TECHNOLOGIES, INC
SYSDRILL
Well Design Combined Report
Wellbore: Riverdale 14-4-7HN (PWB)



Wellhead Details

Name	Northing	Easting	Latitude	Longitude	North	East	Elevation Above Inst.
Slot #3	1230025.7837	3178208.2249	39.96305000	-104.86423000	29.14S	0.21E	0.73

Declination

Date	Source	Time
30-Sep-2014	IGRF Model [1900.0-2015.0]	10:30

Site Details

Name	Northing	Easting	Coord System Name	North Alignment
Riverdale	1230054.9248	3178208.0159	CO83-NF on NORTH AMERICAN DATUM 1983 datum	Grid

Summary Wellpath

MD[ft]	Inc[deg]	Azi[deg]	TVD[ft]	North[ft]	East[ft]	Dogleg [deg/100ft]	Vertical Section[ft]	Northing	Easting
25.00	0.00	0.000	25.00	0.00N	0.00E		0.00	1230025.78	3178208.22
12473.93	90.53	88.760	7626.00	768.15N	4445.87E	==>	4511.74	1230793.91	3182653.95

Interpolated Wellpath

MD[ft]	Inc[deg]	Azi[deg]	TVD[ft]	North[ft]	East[ft]	Dogleg [deg/100ft]	Vertical Section[ft]	Northing	Easting
0.00	0.00	0.000	0.00	0.00N	0.00E		0.00	1230025.78	3178208.22
25.00	0.00	0.000	25.00	0.00N	0.00E	==>	0.00	1230025.78	3178208.22
100.00	0.00	0.000	100.00	0.00N	0.00E	==>	0.00	1230025.78	3178208.22
200.00	0.00	0.000	200.00	0.00N	0.00E	==>	0.00	1230025.78	3178208.22
300.00	0.00	0.000	300.00	0.00N	0.00E	==>	0.00	1230025.78	3178208.22
400.00	0.00	0.000	400.00	0.00N	0.00E	==>	0.00	1230025.78	3178208.22
500.00	0.00	0.000	500.00	0.00N	0.00E	==>	0.00	1230025.78	3178208.22
600.00	0.00	0.000	600.00	0.00N	0.00E	==>	0.00	1230025.78	3178208.22
700.00	0.00	0.000	700.00	0.00N	0.00E	==>	0.00	1230025.78	3178208.22
800.00	0.00	0.000	800.00	0.00N	0.00E	==>	0.00	1230025.78	3178208.22
900.00	0.00	0.000	900.00	0.00N	0.00E	==>	0.00	1230025.78	3178208.22
1000.00	0.00	0.000	1000.00	0.00N	0.00E	==>	0.00	1230025.78	3178208.22
1100.00	0.00	0.000	1100.00	0.00N	0.00E	==>	0.00	1230025.78	3178208.22
1200.00	0.00	0.000	1200.00	0.00N	0.00E	==>	0.00	1230025.78	3178208.22
1225.00	0.00	0.000	1225.00	0.00N	0.00E	==>	0.00	1230025.78	3178208.22
1325.00	1.50	313.910	1324.99	0.68N	0.71W	2.00	-0.58	1230026.46	3178207.52
1425.00	3.50	313.910	1424.89	3.71N	3.85W	2.00	-3.16	1230029.49	3178204.38
1525.00	5.50	313.910	1524.58	9.15N	9.50W	2.00	-7.81	1230034.93	3178198.72
1625.00	7.50	313.910	1623.93	17.00N	17.66W	2.00	-14.50	1230042.78	3178190.57
1700.00	8.68	313.910	1698.16	24.43N	25.38W	==>	-20.85	1230050.22	3178182.85
1800.00	8.68	313.910	1797.01	34.91N	36.25W	==>	-29.78	1230060.69	3178171.97
1900.00	8.68	313.910	1895.87	45.38N	47.13W	==>	-38.72	1230071.16	3178161.09
2000.00	8.68	313.910	1994.72	55.85N	58.01W	==>	-47.65	1230081.63	3178150.22
2100.00	8.68	313.910	2093.57	66.32N	68.89W	==>	-56.59	1230092.10	3178139.34
2200.00	8.68	313.910	2192.43	76.80N	79.77W	==>	-65.53	1230102.58	3178128.46
2300.00	8.68	313.910	2291.28	87.27N	90.64W	==>	-74.46	1230113.05	3178117.59
2400.00	8.68	313.910	2390.13	97.74N	101.52W	==>	-83.40	1230123.52	3178106.71
2500.00	8.68	313.910	2488.99	108.21N	112.40W	==>	-92.33	1230133.99	3178095.83
2600.00	8.68	313.910	2587.84	118.69N	123.28W	==>	-101.27	1230144.47	3178084.95
2700.00	8.68	313.910	2686.69	129.16N	134.15W	==>	-110.20	1230154.94	3178074.08
2800.00	8.68	313.910	2785.55	139.63N	145.03W	==>	-119.14	1230165.41	3178063.20
2900.00	8.68	313.910	2884.40	150.10N	155.91W	==>	-128.08	1230175.88	3178052.32
3000.00	8.68	313.910	2983.25	160.58N	166.79W	==>	-137.01	1230186.36	3178041.44
3100.00	8.68	313.910	3082.11	171.05N	177.66W	==>	-145.95	1230196.83	3178030.57
3200.00	8.68	313.910	3180.96	181.52N	188.54W	==>	-154.88	1230207.30	3178019.69
3300.00	8.68	313.910	3279.81	191.99N	199.42W	==>	-163.82	1230217.77	3178008.81
3400.00	8.68	313.910	3378.67	202.47N	210.30W	==>	-172.75	1230228.24	3177997.94
3500.00	8.68	313.910	3477.52	212.94N	221.17W	==>	-181.69	1230238.72	3177987.06
3600.00	8.68	313.910	3576.37	223.41N	232.05W	==>	-190.63	1230249.19	3177976.18
3700.00	8.68	313.910	3675.23	233.88N	242.93W	==>	-199.56	1230259.66	3177965.30

All data is in Feet unless otherwise stated
Coordinates are from Slot MD's are from Rig and TVD's are from Rig (Planned Datum #1 5136.9ft above Mean Sea Level)
Vertical Section is from 0.00N 0.00E on azimuth 80.200 degrees
Bottom hole distance is 4511.74 Feet on azimuth 80.20 degrees from Wellhead
Calculation method uses Minimum Curvature method
Prepared by Integrated Petroleum Technologies, Inc.
Date Printed: 14-Oct-2014



INTEGRATED PETROLEUM TECHNOLOGIES, INC
SYSDRILL

Well Design Combined Report
Wellbore: Riverdale 14-4-7HN (PWB)



WARD PETROLEUM

Interpolated Wellpath									
MD[ft]	Inc[deg]	Azi[deg]	TVD[ft]	North[ft]	East[ft]	Dogleg [deg/100ft]	Vertical Section[ft]	Northing	Easting
3800.00	8.68	313.910	3774.08	244.36N	253.81W	==>	-208.50	1230270.13	3177954.43
3900.00	8.68	313.910	3872.93	254.83N	264.68W	==>	-217.43	1230280.61	3177943.55
4000.00	8.68	313.910	3971.79	265.30N	275.56W	==>	-226.37	1230291.08	3177932.67
4100.00	8.68	313.910	4070.64	275.78N	286.44W	==>	-235.30	1230301.55	3177921.80
4200.00	8.68	313.910	4169.49	286.25N	297.32W	==>	-244.24	1230312.02	3177910.92
4300.00	8.68	313.910	4268.35	296.72N	308.19W	==>	-253.18	1230322.49	3177900.04
4400.00	8.68	313.910	4367.20	307.19N	319.07W	==>	-262.11	1230332.97	3177889.16
4500.00	8.68	313.910	4466.05	317.67N	329.95W	==>	-271.05	1230343.44	3177878.29
4600.00	8.68	313.910	4564.91	328.14N	340.83W	==>	-279.98	1230353.91	3177867.41
4700.00	8.68	313.910	4663.76	338.61N	351.70W	==>	-288.92	1230364.38	3177856.53
4800.00	8.68	313.910	4762.62	349.08N	362.58W	==>	-297.85	1230374.86	3177845.66
4900.00	8.68	313.910	4861.47	359.56N	373.46W	==>	-306.79	1230385.33	3177834.78
5000.00	8.68	313.910	4960.32	370.03N	384.34W	==>	-315.73	1230395.80	3177823.90
5100.00	8.68	313.910	5059.18	380.50N	395.21W	==>	-324.66	1230406.27	3177813.02
5200.00	8.68	313.910	5158.03	390.97N	406.09W	==>	-333.60	1230416.74	3177802.15
5300.00	8.68	313.910	5256.88	401.45N	416.97W	==>	-342.53	1230427.22	3177791.27
5400.00	8.68	313.910	5355.74	411.92N	427.85W	==>	-351.47	1230437.69	3177780.39
5500.00	8.68	313.910	5454.59	422.39N	438.72W	==>	-360.40	1230448.16	3177769.52
5600.00	8.68	313.910	5553.44	432.86N	449.60W	==>	-369.34	1230458.63	3177758.64
5700.00	8.68	313.910	5652.30	443.34N	460.48W	==>	-378.28	1230469.11	3177747.76
5800.00	8.68	313.910	5751.15	453.81N	471.36W	==>	-387.21	1230479.58	3177736.88
5900.00	8.68	313.910	5850.00	464.28N	482.23W	==>	-396.15	1230490.05	3177726.01
6000.00	8.68	313.910	5948.86	474.75N	493.11W	==>	-405.08	1230500.52	3177715.13
6100.00	8.68	313.910	6047.71	485.23N	503.99W	==>	-414.02	1230511.00	3177704.25
6200.00	8.68	313.910	6146.56	495.70N	514.87W	==>	-422.95	1230521.47	3177693.37
6300.00	8.68	313.910	6245.42	506.17N	525.74W	==>	-431.89	1230531.94	3177682.50
6400.00	8.68	313.910	6344.27	516.64N	536.62W	==>	-440.83	1230542.41	3177671.62
6500.00	8.68	313.910	6443.12	527.12N	547.50W	==>	-449.76	1230552.88	3177660.74
6600.00	8.68	313.910	6541.98	537.59N	558.38W	==>	-458.70	1230563.36	3177649.87
6700.00	8.68	313.910	6640.83	548.06N	569.25W	==>	-467.63	1230573.83	3177638.99
6800.00	8.68	313.910	6739.68	558.54N	580.13W	==>	-476.57	1230584.30	3177628.11
6900.00	8.68	313.910	6838.54	569.01N	591.01W	==>	-485.50	1230594.77	3177617.23
7000.00	6.33	346.630	6937.59	579.56N	599.40W	8.00	-491.97	1230605.32	3177608.85
7100.00	9.09	46.080	7036.81	590.42N	594.97W	8.00	-485.76	1230616.18	3177613.27
7200.00	15.90	66.340	7134.43	601.41N	576.70W	8.00	-465.89	1230627.18	3177631.54
7300.00	23.46	74.250	7228.54	612.33N	544.94W	8.00	-432.73	1230638.10	3177663.30
7400.00	31.24	78.410	7317.30	622.97N	500.30W	8.00	-386.94	1230648.73	3177707.94
7500.00	39.09	81.040	7398.99	633.10N	443.67W	8.00	-329.40	1230658.87	3177764.57
7600.00	46.99	82.900	7472.02	642.55N	376.13W	8.00	-261.24	1230668.31	3177832.11
7700.00	54.92	84.340	7534.96	651.11N	299.00W	8.00	-183.78	1230676.88	3177909.23
7800.00	62.85	85.520	7586.60	658.64N	213.80W	8.00	-98.54	1230684.40	3177994.44
7900.00	70.80	86.540	7625.93	664.97N	122.16W	8.00	-7.16	1230690.73	3178086.07
8000.00	78.75	87.470	7652.17	669.99N	25.88W	8.00	88.57	1230695.75	3178182.34
8100.00	86.70	88.350	7664.83	673.60N	73.17E	8.00	186.78	1230699.36	3178281.39
8200.00	90.53	88.760	7665.52	675.93N	173.11E	==>	285.67	1230701.69	3178381.33
8300.00	90.53	88.760	7664.59	678.09N	273.09E	==>	384.55	1230703.85	3178481.30
8400.00	90.53	88.760	7663.67	680.25N	373.06E	==>	483.43	1230706.01	3178581.27
8500.00	90.53	88.760	7662.74	682.40N	473.03E	==>	582.31	1230708.17	3178681.24
8600.00	90.53	88.760	7661.82	684.56N	573.00E	==>	681.19	1230710.32	3178781.21
8700.00	90.53	88.760	7660.89	686.72N	672.98E	==>	780.07	1230712.48	3178881.18
8800.00	90.53	88.760	7659.97	688.88N	772.95E	==>	878.95	1230714.64	3178981.15
8900.00	90.53	88.760	7659.04	691.04N	872.92E	==>	977.83	1230716.80	3179081.12
9000.00	90.53	88.760	7658.12	693.19N	972.89E	==>	1076.71	1230718.95	3179181.09
9100.00	90.53	88.760	7657.20	695.35N	1072.87E	==>	1175.59	1230721.11	3179281.06
9200.00	90.53	88.760	7656.27	697.51N	1172.84E	==>	1274.47	1230723.27	3179381.03
9300.00	90.53	88.760	7655.35	699.67N	1272.81E	==>	1373.35	1230725.43	3179480.99
9400.00	90.53	88.760	7654.42	701.82N	1372.78E	==>	1472.23	1230727.58	3179580.96
9500.00	90.53	88.760	7653.50	703.98N	1472.76E	==>	1571.11	1230729.74	3179680.93
9600.00	90.53	88.760	7652.57	706.14N	1572.73E	==>	1669.99	1230731.90	3179780.90
9700.00	90.53	88.760	7651.65	708.30N	1672.70E	==>	1768.87	1230734.06	3179880.87

All data is in Feet unless otherwise stated
Coordinates are from Slot MD's are from Rig and TVD's are from Rig (Planned Datum #1 5136.9ft above Mean Sea Level)
Vertical Section is from 0.00N 0.00E on azimuth 80.200 degrees
Bottom hole distance is 4511.74 Feet on azimuth 80.20 degrees from Wellhead
Calculation method uses Minimum Curvature method
Prepared by Integrated Petroleum Technologies, Inc.
Date Printed: 14-Oct-2014



WARD PETROLEUM

INTEGRATED PETROLEUM TECHNOLOGIES, INC
SYSDRILL
Well Design Combined Report
Wellbore: Riverdale 14-4-7HN (PWB)



Interpolated Wellpath									
MD[ft]	Inc[deg]	Azi[deg]	TVD[ft]	North[ft]	East[ft]	Dogleg [deg/100ft]	Vertical Section[ft]	Northing	Easting
9800.00	90.53	88.760	7650.72	710.45N	1772.67E	==>	1867.75	1230736.21	3179980.84
9900.00	90.53	88.760	7649.80	712.61N	1872.65E	==>	1966.63	1230738.37	3180080.81
10000.00	90.53	88.760	7648.87	714.77N	1972.62E	==>	2065.51	1230740.53	3180180.78
10100.00	90.53	88.760	7647.95	716.93N	2072.59E	==>	2164.39	1230742.69	3180280.75
10200.00	90.53	88.760	7647.02	719.08N	2172.56E	==>	2263.27	1230744.85	3180380.72
10300.00	90.53	88.760	7646.10	721.24N	2272.54E	==>	2362.15	1230747.00	3180480.69
10400.00	90.53	88.760	7645.17	723.40N	2372.51E	==>	2461.03	1230749.16	3180580.66
10500.00	90.53	88.760	7644.25	725.56N	2472.48E	==>	2559.91	1230751.32	3180680.62
10600.00	90.53	88.760	7643.33	727.72N	2572.45E	==>	2658.79	1230753.48	3180780.59
10700.00	90.53	88.760	7642.40	729.87N	2672.43E	==>	2757.67	1230755.63	3180880.56
10800.00	90.53	88.760	7641.48	732.03N	2772.40E	==>	2856.55	1230757.79	3180980.53
10900.00	90.53	88.760	7640.55	734.19N	2872.37E	==>	2955.43	1230759.95	3181080.50
11000.00	90.53	88.760	7639.63	736.35N	2972.34E	==>	3054.31	1230762.11	3181180.47
11100.00	90.53	88.760	7638.70	738.50N	3072.32E	==>	3153.19	1230764.26	3181280.44
11200.00	90.53	88.760	7637.78	740.66N	3172.29E	==>	3252.07	1230766.42	3181380.41
11300.00	90.53	88.760	7636.85	742.82N	3272.26E	==>	3350.95	1230768.58	3181480.38
11400.00	90.53	88.760	7635.93	744.98N	3372.23E	==>	3449.83	1230770.74	3181580.35
11500.00	90.53	88.760	7635.00	747.13N	3472.21E	==>	3548.71	1230772.89	3181680.32
11600.00	90.53	88.760	7634.08	749.29N	3572.18E	==>	3647.59	1230775.05	3181780.29
11700.00	90.53	88.760	7633.15	751.45N	3672.15E	==>	3746.47	1230777.21	3181880.26
11800.00	90.53	88.760	7632.23	753.61N	3772.12E	==>	3845.35	1230779.37	3181980.22
11900.00	90.53	88.760	7631.30	755.76N	3872.09E	==>	3944.24	1230781.52	3182080.19
12000.00	90.53	88.760	7630.38	757.92N	3972.07E	==>	4043.12	1230783.68	3182180.16
12100.00	90.53	88.760	7629.45	760.08N	4072.04E	==>	4142.00	1230785.84	3182280.13
12200.00	90.53	88.760	7628.53	762.24N	4172.01E	==>	4240.88	1230788.00	3182380.10
12300.00	90.53	88.760	7627.61	764.40N	4271.98E	==>	4339.76	1230790.15	3182480.07
12400.00	90.53	88.760	7626.68	766.55N	4371.96E	==>	4438.64	1230792.31	3182580.04
12473.93	90.53	88.760	7626.00	768.15N	4445.87E	==>	4511.74	1230793.91	3182653.95

All data is in Feet unless otherwise stated
Coordinates are from Slot MD's are from Rig and TVD's are from Rig (Planned Datum #1 5136.9ft above Mean Sea Level)
Vertical Section is from 0.00N 0.00E on azimuth 80.200 degrees
Bottom hole distance is 4511.74 Feet on azimuth 80.20 degrees from Wellhead
Calculation method uses Minimum Curvature method
Prepared by Integrated Petroleum Technologies, Inc.
Date Printed: 14-Oct-2014



WARD PETROLEUM

INTEGRATED PETROLEUM TECHNOLOGIES, INC
SYSDRILL
Well Design Combined Report
Wellbore: Riverdale 14-4-7HN (PWB)



Hole Sections								
Diameter [in]	Start MD[ft]	Start TVD[ft]	Start North[ft]	Start East[ft]	End MD[ft]	End TVD[ft]	End North[ft]	End East[ft]
13 1/2	25.00	25.00	0.00N	0.00E	1200.00	1200.00	0.00N	0.00E
8 3/4	1200.00	1200.00	0.00N	0.00E	8148.00	7666.00	674.81N	121.13E
6 1/8	8148.00	7666.00	674.81N	121.13E	12473.93	7626.00	768.15N	4445.87E

Casings								
Name	Top MD[ft]	Top TVD[ft]	Top North[ft]	Top East[ft]	Shoe MD[ft]	Shoe TVD[ft]	Shoe North[ft]	Shoe East[ft]
9 5/8in Surface Casing	25.00	25.00	0.00N	0.00E	1200.00	1200.00	0.00N	0.00E
7.0in Intermediate Casing	25.00	25.00	0.00N	0.00E	8148.00	7666.00	674.81N	121.13E
4 1/2in Production Liner	7948.00	7640.19	667.55N	76.41W	12473.93	7626.00	768.15N	4445.87E

Targets								
Name	North[ft]	East[ft]	TVD[ft]	Latitude	Longitude	Northing	Easting	Last Revised
Ward Riverdale 14-4-7HN BH	768.15N	4445.87E	7626.00	39.96507000	-104.84835000	1230793.91	3182653.95	30-Sep-2014
Ward Riverdale 14-4-7HN LP	674.81N	121.30E	7666.00	39.96490000	-104.86378000	1230700.58	3178329.52	30-Sep-2014

Survey Tool Program						
Reference	Survey Name	MD[ft]	TVD[ft]	Survey Tool	Error Model	
304797	Planned	12473.93	7626.00	WdW Rate Gyro	Standard	

Notes

All data is in Feet unless otherwise stated
Coordinates are from Slot MD's are from Rig and TVD's are from Rig (Planned Datum #1 5136.9ft above Mean Sea Level)
Vertical Section is from 0.00N 0.00E on azimuth 80.200 degrees
Bottom hole distance is 4511.74 Feet on azimuth 80.20 degrees from Wellhead
Calculation method uses Minimum Curvature method
Prepared by Integrated Petroleum Technologies, Inc.
Date Printed: 14-Oct-2014



SYSDRILL
Closest Approach + Clearance Factor Summary Report
Wellbore: Riverdale 14-4-7HN (PWB)



Ellipse separations are reported ONLY if BOTH wells have uncertainty data
Only Depth and Magnetic Reference Field error terms are correlated across tie points
Proximities beyond 2500.00ft with expansion rate of 0.00ft/1000ft are not reported
Scan limit is calculated on CENTRE to CENTRE distance

Summary data uses Closest Approach clearance calculation for all minima
Hole size/Casings ARE included
Hole size/Casings are NOT subtracted from Centre-Centre distance
Confidence limit of 95.00% / 2.80 SD.

Wellbore		
Name	Created	Last Revised
Riverdale 14-4-7HN (PWB)	30-Sep-2014	2-Oct-2014

Well		
Name	Government ID	Last Revised
Riverdale 14-4-7HN		1-Oct-2014

Slot						
Name	Grid Northing	Grid Easting	Latitude	Longitude	North	East
Slot #3	1230025.7837	3178208.2249	39.96305000	-104.86423000	29.14S	0.21E

Installation				
Name	Easting	Northing	Coord System Name	North Alignment
Riverdale	3178208.0159	1230054.9248	CO83-NF on NORTH AMERICAN DATUM 1983 datum	Grid

Field				
Name	Easting	Northing	Coord System Name	North Alignment
West Brighton	3178196.4983	1231661.3262	CO83-NF on NORTH AMERICAN DATUM 1983 datum	Grid

Clearance Summary								
Offset Wellbore	Offset Structure	Separation [ft]	MD[ft]	Diverging From[ft]	Ellipse Separation [ft]	Ellipse MD[ft]	Clearance Factor	Clearance MD[ft]
Riverdale 15-2-8HN (PWB)	Riverdale	8.70	1489.35	7615.50	5.68	1501.38	2.87	1501.38
Riverdale 15-2-7HC (PWB)	Riverdale	10.22	1450.94	7790.00	7.27	1450.94	1.52	7790.00
Riverdale 14-4-8HC (PWB)	Riverdale	14.57	1250.00	8128.67	11.73	1189.70	5.13	1189.70
Riverdale 14-4-6HC (PWB)	Riverdale	14.57	1225.26	1225.26	11.73	1189.70	5.13	1189.70
Riverdale 15-2-6HN (PWB)	Riverdale	23.42	1225.27	7692.61	20.58	1189.70	8.25	1189.70
Riverdale 15-2-9HC (PWB)	Riverdale	23.42	1255.31	7733.20	20.58	1189.70	8.24	1189.70
Riverdale 14-4-9HN (PWB)	Riverdale	29.14	1250.00	1250.00	26.30	1189.70	10.26	1189.70
Riverdale 14-4-5HN (PWB)	Riverdale	29.14	1200.73	1200.73	26.30	1189.70	10.26	1189.70
Riverdale 15-2-5HC (PWB)	Riverdale	37.39	1200.37	7855.67	34.55	1189.70	13.17	1189.70
Riverdale 15-2-10HN (PWB)	Riverdale	37.39	1255.31	7474.95	34.55	1189.70	13.16	1189.70
Riverdale 14-4-10HC (PWB)	Riverdale	43.71	1250.00	1250.00	40.87	1189.70	15.39	1189.70
Riverdale	Riverdale	55.29	1255.31	7842.11	52.44	1189.70	19.46	1189.70

All data is in Feet unless otherwise stated
Coordinates are from Slot MD's are from Rig and TVD's are from Rig (Planned Datum #1 5136.9ft above Mean Sea Level)
Vertical Section is from 0.00N 0.00E on azimuth 80.200 degrees
Prepared by Integrated Petroleum Technologies, Inc.
Date Printed: 14-Oct-2014



WARD PETROLEUM

SYSDRILL
Closest Approach + Clearance Factor Summary Report
Wellbore: Riverdale 14-4-7HN (PWB)



Offset Wellbore	Offset Structure	Separation [ft]	MD[ft]	Diverging From[ft]	Ellipse Separation [ft]	Ellipse MD[ft]	Clearance Factor	Clearance MD[ft]
15-2-11HC (PWB)								
Riverdale 14-4-11HN (PWB)	Riverdale	61.93	1250.00	1250.00	59.09	1189.70	21.63	12473.93
Riverdale 15-2-12HN (PWB)	Riverdale	69.72	1248.24	1248.24	66.88	1189.70	24.54	1189.70
Riverdale 14-4-12HC (PWB)	Riverdale	76.50	1247.83	1247.83	73.66	1189.70	26.92	1189.70
Riverdale 22-2-1HC (PWB)	Riverdale	84.21	1197.45	1197.45	81.35	1197.45	29.50	1197.45
Riverdale 23-4-1HN (PWB)	Riverdale	91.07	1197.43	1197.43	88.22	1197.43	31.91	1197.43
W United Bank of Denver 1 (AWB)	Offsets	191.15	1255.31	1255.31	181.49	1189.70	18.69	1550.59
W Ehler, John 15 (AWB)	Offsets	683.16	5188.29	5188.29	659.96	5188.29	29.44	5192.32
W Nauman 1-14 (AWB)	Offsets	1066.48	8647.12	8647.12	1031.73	8653.61	29.40	8965.29
W Ehler, John 18 (AWB)	Offsets	1140.51	5418.25	5418.25	1118.97	5418.25	52.95	5405.58
W RC Nauman 2 (AWB)	Offsets	1216.61	5372.77	8387.05	1192.87	5372.77	51.16	5425.00
W Adams County 1 (AWB)	Offsets	1313.94	1255.31	1255.31	1304.53	1189.70	78.89	5290.75
W United Bank of Denver 3 (AWB)	Offsets	1347.69	1255.31	9375.39	1338.40	1189.70	80.15	5257.94
W Krough-Nauman 1 (AWB)	Offsets	1559.35	10911.98	10911.98	1507.06	10933.79	28.66	11278.28
KROUGH-SCOTT #1 (AWB)	Offsets	1637.98	12473.93	12473.93	1592.63	12473.93	36.12	12473.93
W Ehler, John 20 (AWB)	Offsets	1663.90	1255.31	1255.31	1654.26	1386.55	77.71	5339.96
W Ehler, John 22 (AWB)	Offsets	1925.17	5399.74	5399.74	1902.10	5399.74	83.29	5487.60
W United Bank of Denver 2 (AWB)	Offsets	2088.33	1250.00	1250.00	2079.21	1189.70	134.49	4325.00
W Ehler, John 11 (AWB)	Offsets	2090.75	5547.86	5547.86	2068.88	5547.86	95.55	5586.02
W RC Nauman 4 (AWB)	Offsets	2103.98	1255.31	9737.69	2094.43	1320.93	98.07	5339.96
W Ehler, John 19 (AWB)	Offsets	2304.34	5520.41	5520.41	2282.25	5520.41	104.22	5602.43
W RC Nauman 1 (AWB)	Offsets	2371.23	5411.28	5411.28	2347.96	5411.28	101.47	5586.02
W Adams Aggregate 2 (AWB)	Offsets	2443.70	10966.61	10966.61	2418.43	10983.01	89.38	11606.36

All data is in Feet unless otherwise stated
Coordinates are from Slot MD's are from Rig and TVD's are from Rig (Planned Datum #1 5136.9ft above Mean Sea Level)
Vertical Section is from 0.00N 0.00E on azimuth 80.200 degrees
Prepared by Integrated Petroleum Technologies, Inc.
Date Printed: 14-Oct-2014