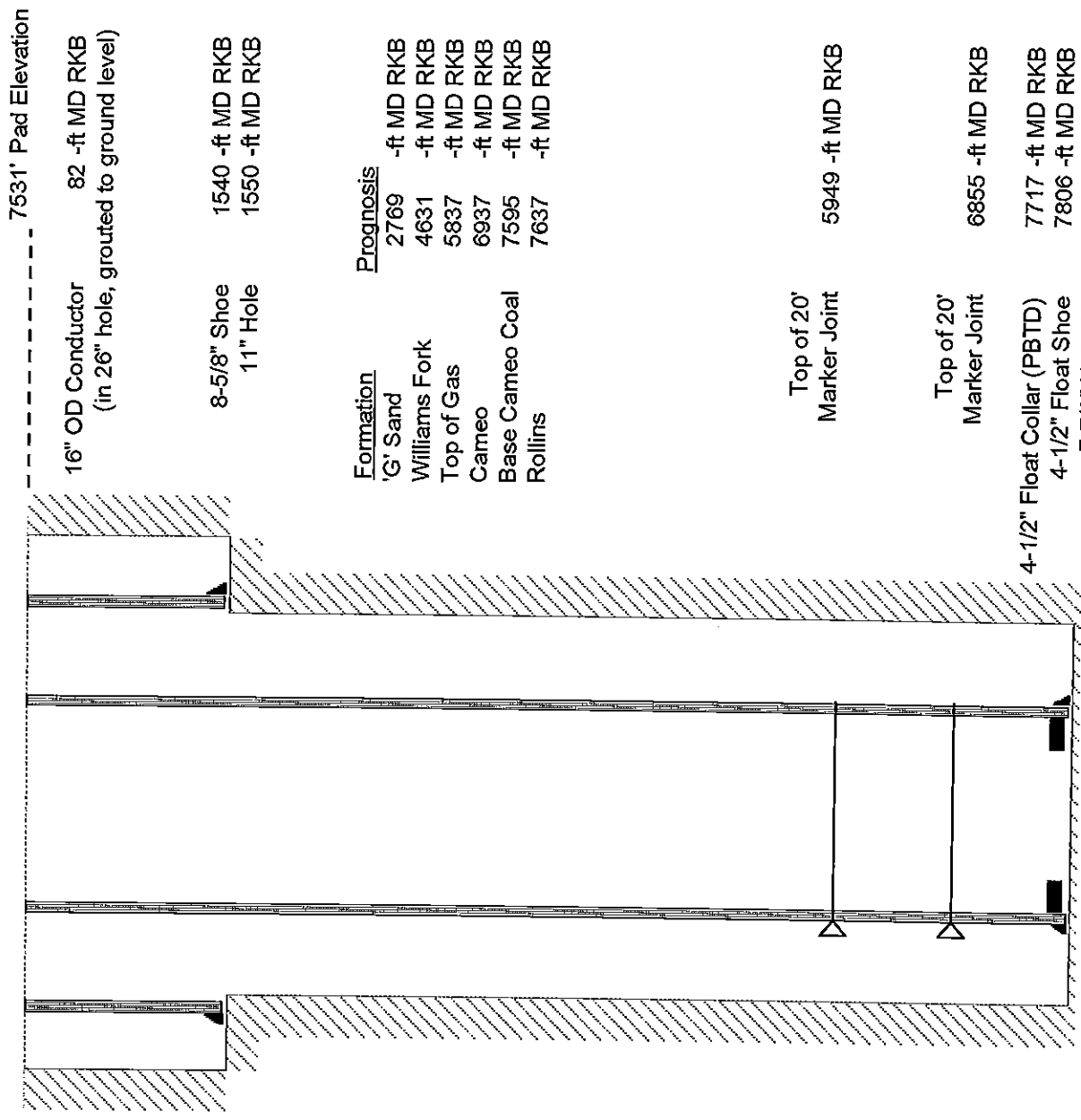


Piceance Energy, LLC
 Gunderson 29-08E
 Slot A-9
 Patterson 306 (22-ft KB)

API #: 05-077-09760-00
 SE/4 NE/4 S29/T9S/R93W/6th PM
 Mesa County, CO
 Date of diagram: 4/26/2015

Vertical datum ----- 7553' RKB Elevation



Formation	Prognosis
'G' Sand	2769 -ft MD RKB
Williams Fork	4631 -ft MD RKB
Top of Gas	5837 -ft MD RKB
Cameo	6937 -ft MD RKB
Base Cameo Coal	7595 -ft MD RKB
Rollins	7637 -ft MD RKB

Top of 20'
 Marker Joint 5949 -ft MD RKB

Top of 20'
 Marker Joint 6855 -ft MD RKB

4-1/2" Float Collar (PBTD)
 4-1/2" Float Shoe 7717 -ft MD RKB
 7-7/8" Hole TD 7806 -ft MD RKB
 7816 -ft MD RKB

Cementing details

8-5/8" 24# J55 STC Surface Csg		Lead	Tail
Density (ppg)	12.3	12.3	12.8
Volume (sx)	192	192	114
Yield (cf/sx)	2.45	2.45	2.17
Top (ft RKB)	Surface	1000	1000
Bottom (ft RKB)	1000	1540	1540
Returns (full or partial)	Full	Full	Full
4-1/2" 11.6# 180 LTC Production Csg		Lead	Tail
Density (ppg)	12.8	12.8	13.3
Volume (sx)	894	894	413
Yield (cf/sx)	1.75	1.75	1.89
Est Top (ft RKB)	1022	5637	5637
Est Bottom (ft RKB)	5593	7806	7806
Returns (full or partial)	Full	Full	Full