



MATRIX K-29HN

MD
2":100'

Company: Bayswater Exploration & Production, LLC
Well Name: Matrix K-29HN
API: 05-123-40702-00
Rig Id: Frontier 8
State: CO
County/Parish: Weld
Country: United States
Survey Company: Ensign Directional Services
Job number:
DIR. DRILLER DAY Kabel Skelton
DIR. DRILLER NIGHT Kody Woods
LWD/MWD DAYS Matt Brokaw
LWD/MWD NIGHTS Tyler Teague

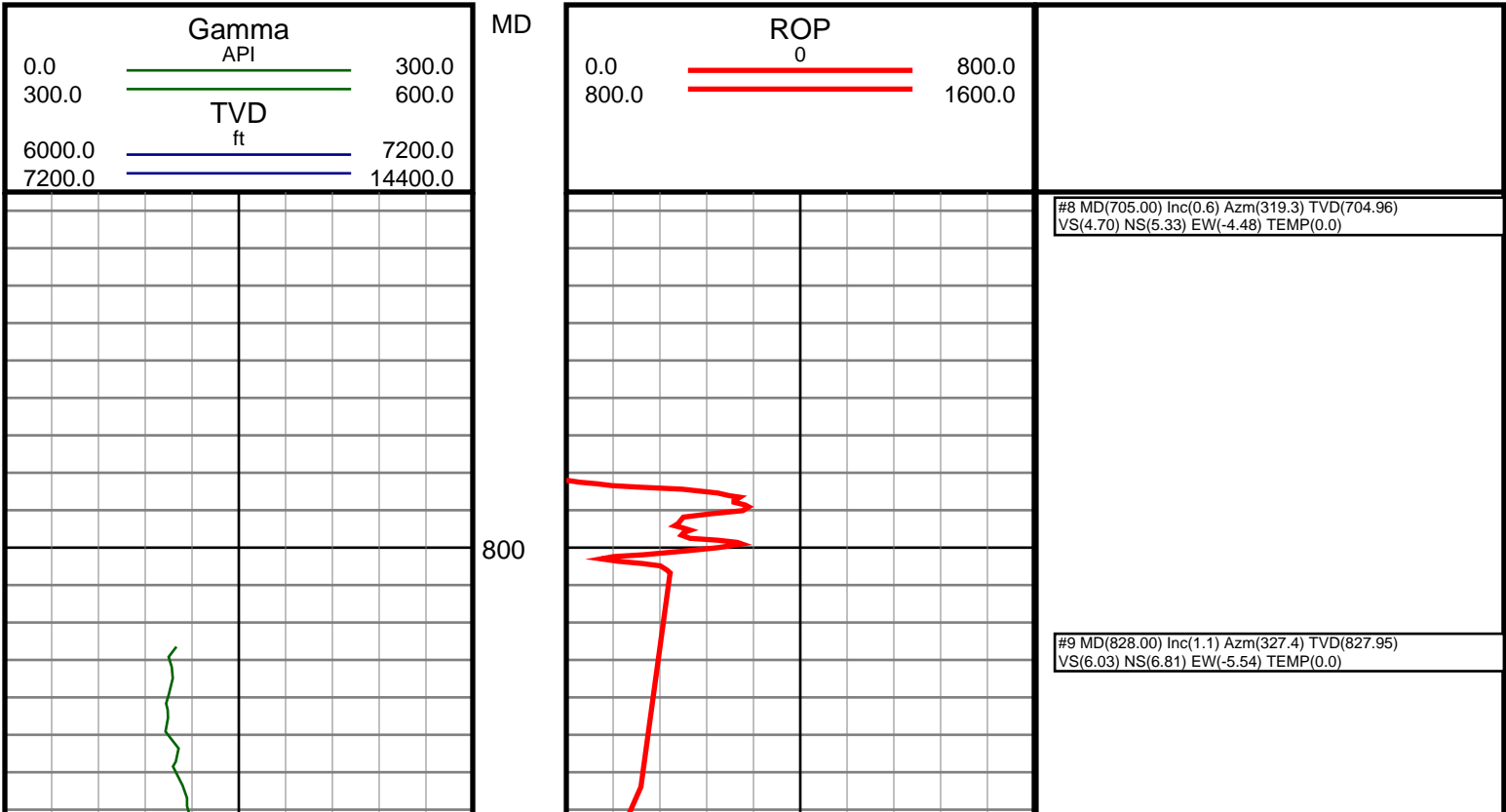
Log measurements: Gamma
Depth measured from: Rig Floor
Maximum temperature:

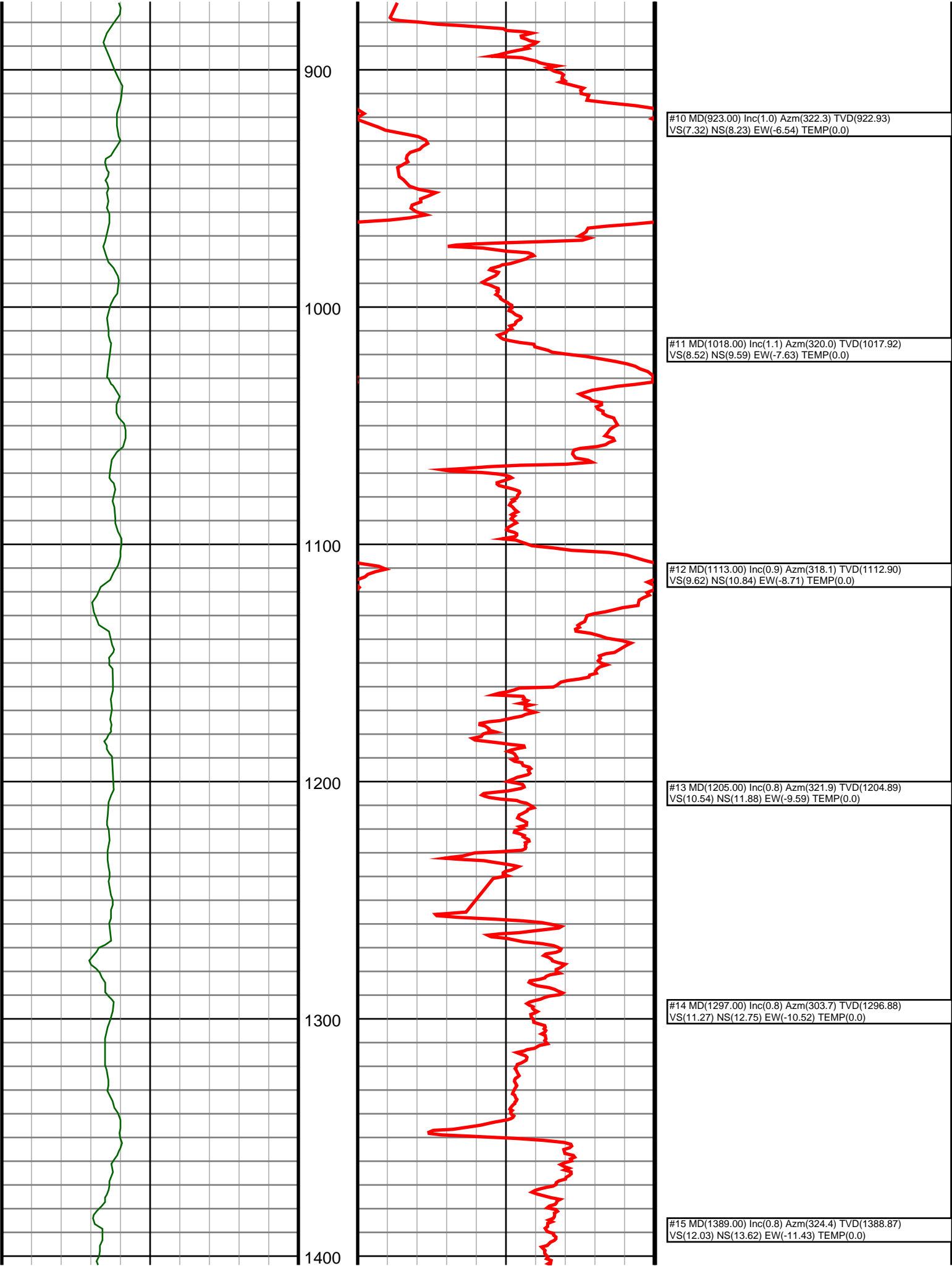
Depth **Date**
Start: 7480 ft 3/10/2015
End: 11476 ft 3/11/2015

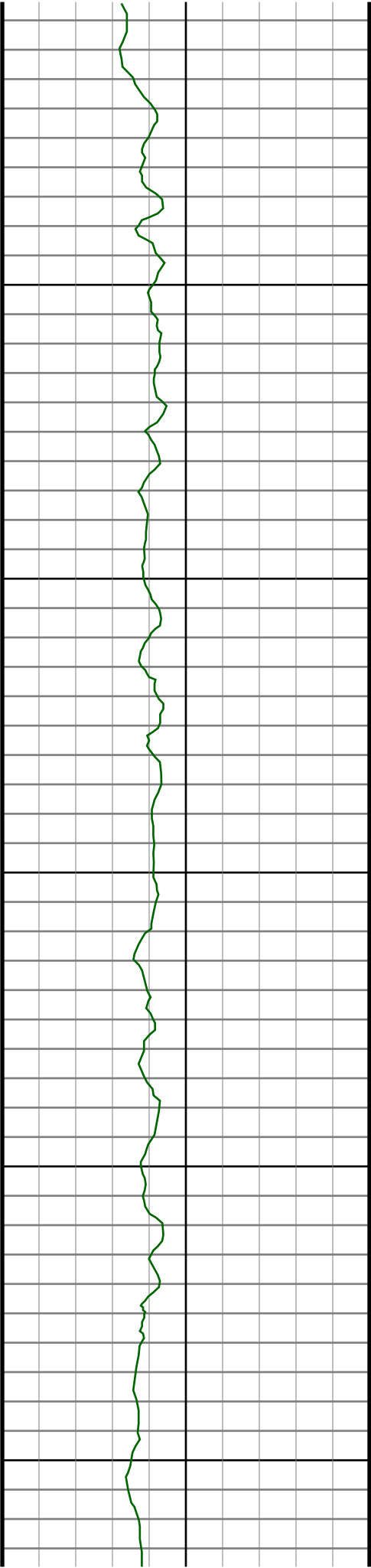
Casing	Depth	Size	Mud Type:	Elevations
Surface:	748	9.63	Density:	KB: 4730.5
Intermediate:	7469	7	Viscosity:	GL: 4708
			Rm:	DF: 4730.5
			Rmf:	
			Rmc:	

Run	Bit Size	Gamma	Survey	Start	End	Start	End
1	8.75	51.53	46.53	760	7480	1/13/2015	1/15/2015
2	6.125	56.10	53.19	7480	11476	3/10/2015	3/11/15
3							
4							
5							
6							
7							
8							
9							
10							

Ensign Directional Services uses its best efforts to provide its customers with accurate information and interpretations in conjunction with services performed but will not be held liable or responsible for the accuracy of such information or interpretation.







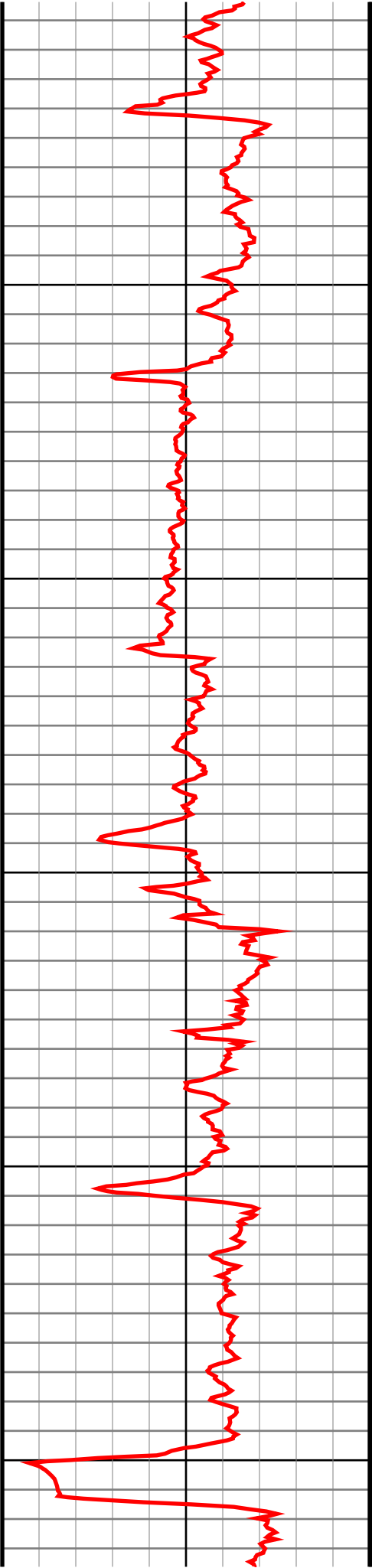
1500

1600

1700

1800

1900



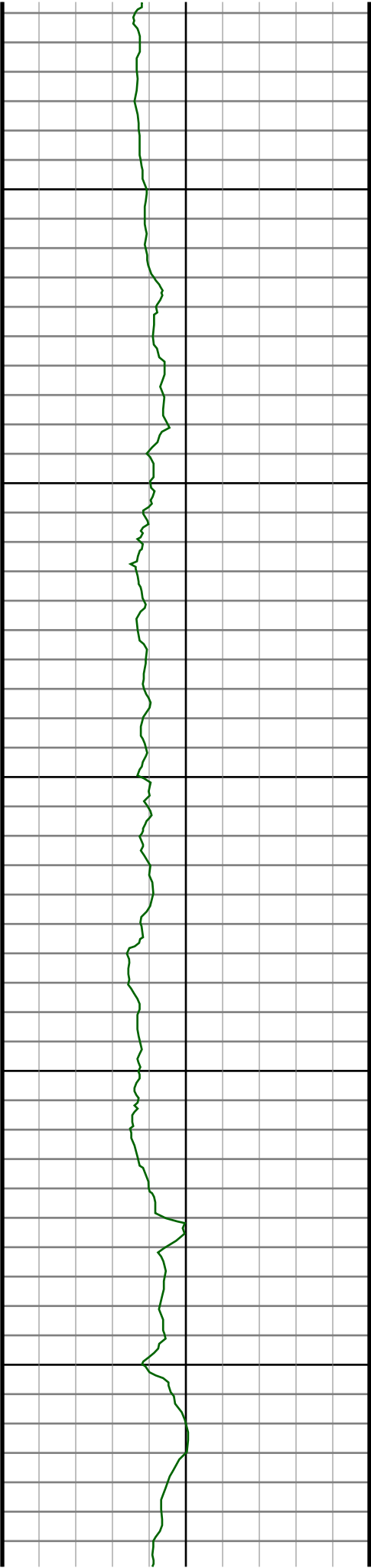
#16 MD(1481.00) Inc(0.6) Azm(304.0) TVD(1480.87)
VS(12.71) NS(14.42) EW(-12.20) TEMP(0.0)

#17 MD(1574.00) Inc(0.5) Azm(286.3) TVD(1573.86)
VS(12.99) NS(14.80) EW(-13.00) TEMP(0.0)

#18 MD(1666.00) Inc(0.4) Azm(232.5) TVD(1665.86)
VS(12.83) NS(14.72) EW(-13.64) TEMP(0.0)

#19 MD(1758.00) Inc(0.4) Azm(149.9) TVD(1757.86)
VS(12.35) NS(14.25) EW(-13.73) TEMP(0.0)

#20 MD(1850.00) Inc(0.4) Azm(20.3) TVD(1849.86)
VS(12.40) NS(14.27) EW(-13.46) TEMP(0.0)



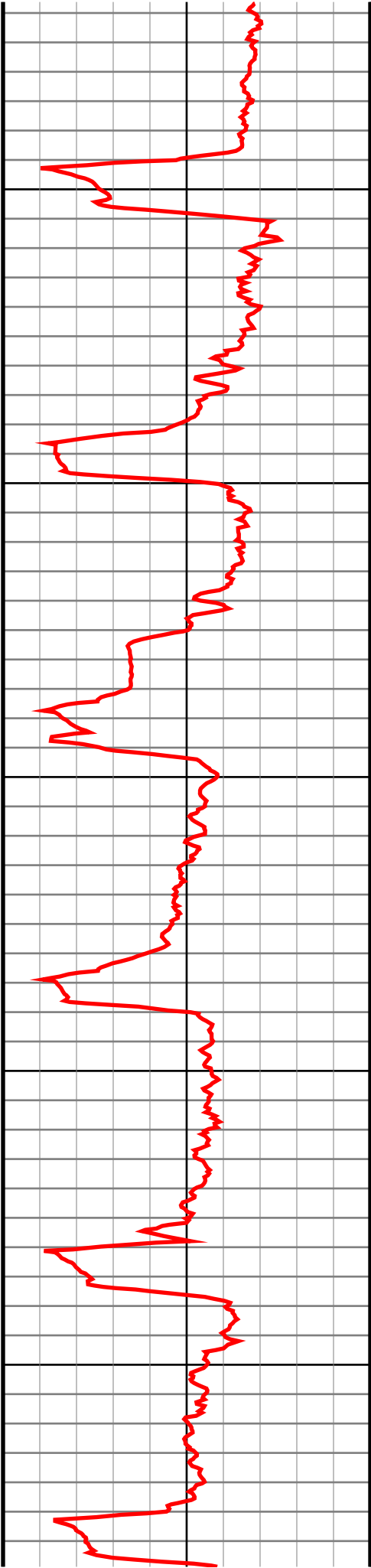
2000

2100

2200

2300

2400



#21 MD(1942.00) Inc(1.5) Azm(133.9) TVD(1941.85)
VS(12.00) NS(13.74) EW(-12.48) TEMP(0.0)

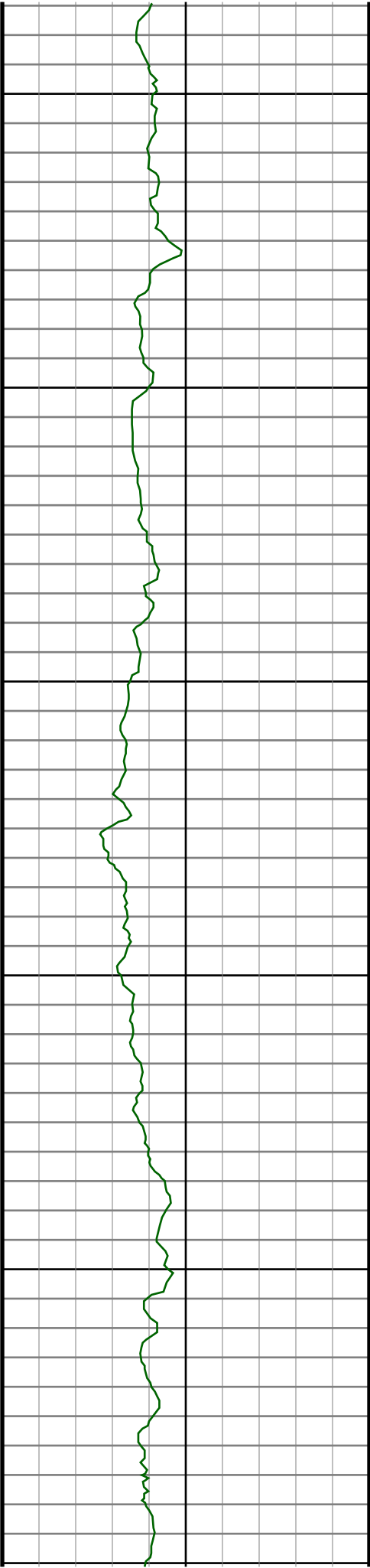
#22 MD(2034.00) Inc(3.1) Azm(150.6) TVD(2033.77)
VS(9.30) NS(10.73) EW(-10.39) TEMP(0.0)

#23 MD(2126.00) Inc(5.0) Azm(134.0) TVD(2125.54)
VS(4.92) NS(5.78) EW(-6.28) TEMP(0.0)

#24 MD(2218.00) Inc(7.1) Azm(127.4) TVD(2217.02)
VS(-0.31) NS(-0.46) EW(1.12) TEMP(0.0)

#25 MD(2310.00) Inc(7.7) Azm(125.2) TVD(2308.26)
VS(-6.02) NS(-7.46) EW(10.67) TEMP(0.0)

#26 MD(2403.00) Inc(8.7) Azm(131.7) TVD(2400.31)
VS(-12.88) NS(-15.74) EW(21.01) TEMP(0.0)



2500

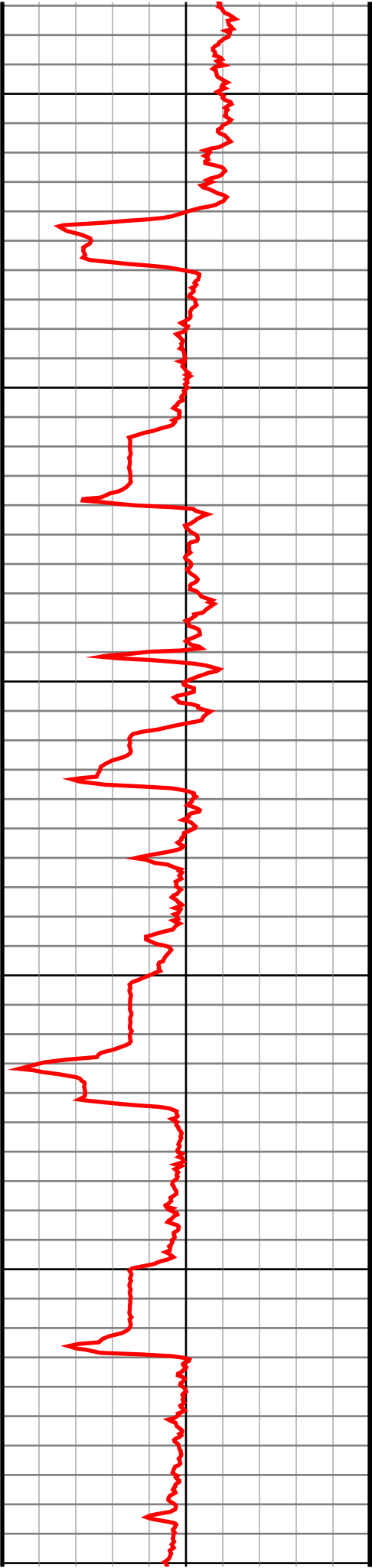
2600

2700

2800

2900

3000



#27 MD(2495.00) Inc(9.5) Azm(141.2) TVD(2491.15)
VS(-22.04) NS(-26.28) EW(30.97) TEMP(0.0)

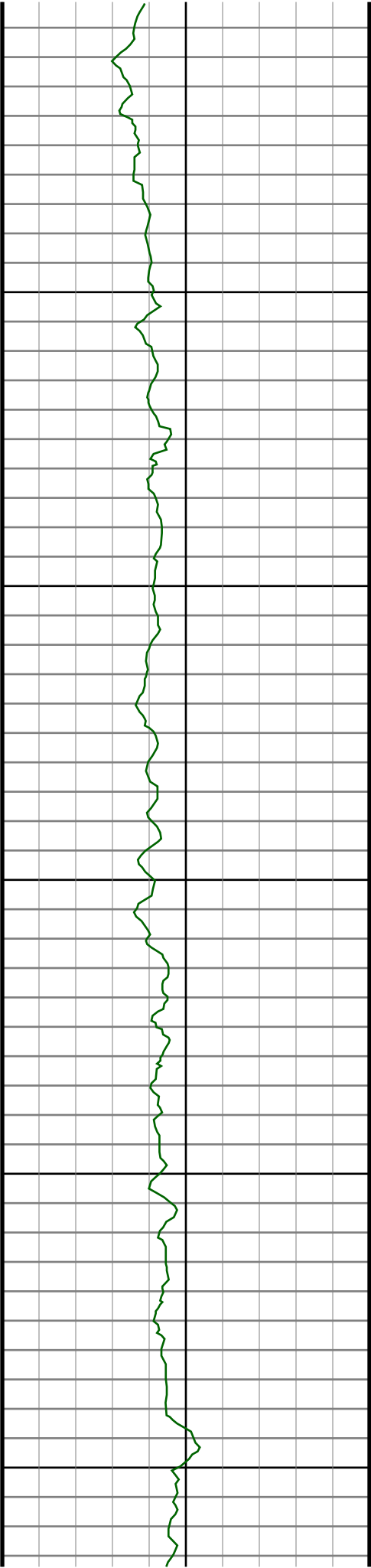
#28 MD(2590.00) Inc(10.9) Azm(133.3) TVD(2584.65)
VS(-32.73) NS(-38.55) EW(42.42) TEMP(0.0)

#29 MD(2685.00) Inc(10.5) Azm(129.6) TVD(2678.00)
VS(-42.59) NS(-50.23) EW(55.62) TEMP(0.0)

#30 MD(2781.00) Inc(10.6) Azm(130.3) TVD(2772.38)
VS(-52.04) NS(-61.52) EW(69.10) TEMP(0.0)

#31 MD(2876.00) Inc(10.6) Azm(136.3) TVD(2865.76)
VS(-62.26) NS(-73.49) EW(81.80) TEMP(0.0)

#32 MD(2971.00) Inc(9.9) Azm(133.5) TVD(2959.25)
VS(-72.55) NS(-85.43) EW(93.76) TEMP(0.0)



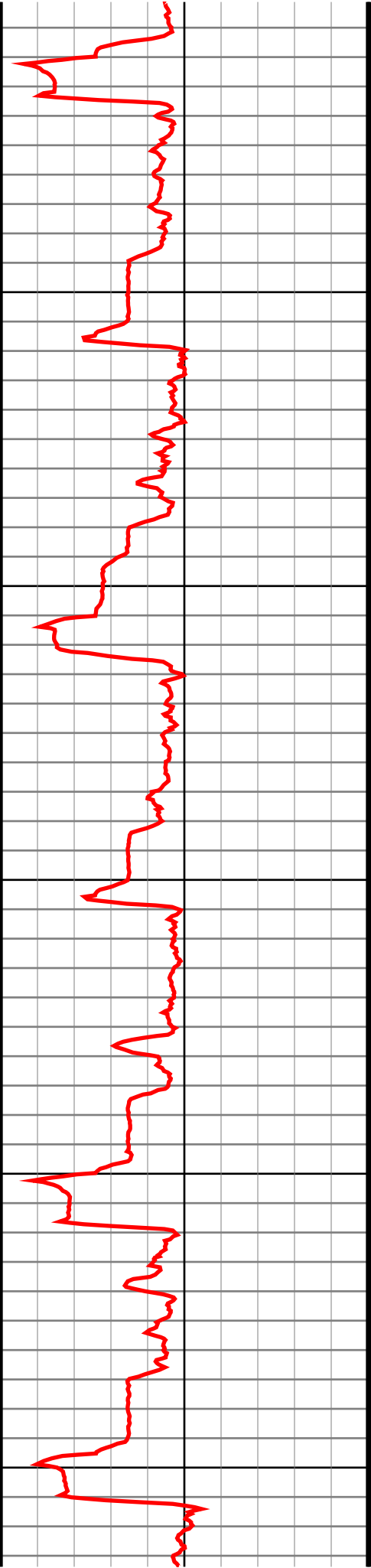
3100

3200

3300

3400

3500



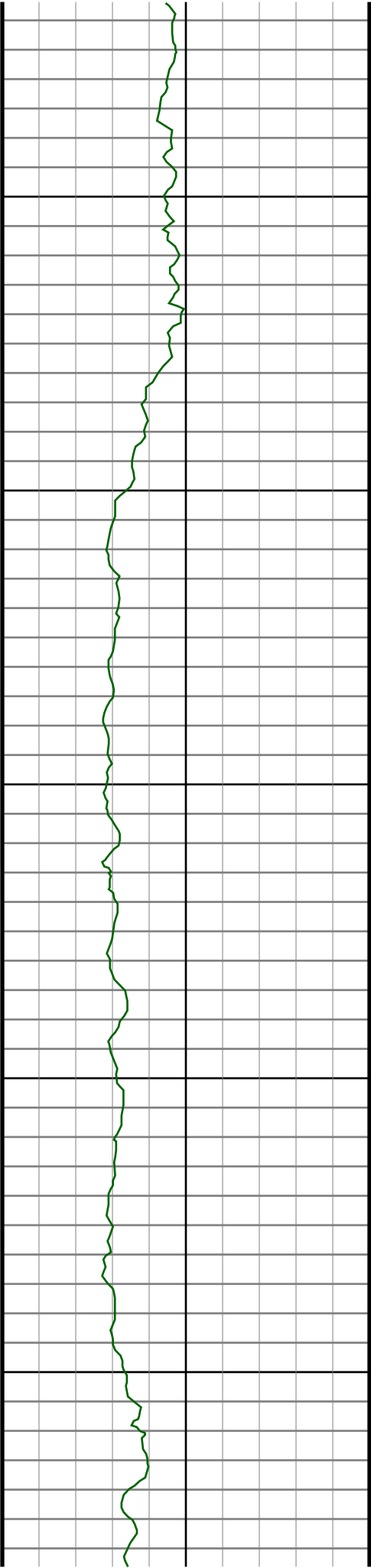
#33 MD(3066.00) Inc(10.9) Azm(136.8) TVD(3052.69)
VS(-83.05) NS(-97.59) EW(105.83) TEMP(0.0)

#34 MD(3161.00) Inc(9.8) Azm(135.8) TVD(3146.14)
VS(-93.76) NS(-109.94) EW(117.62) TEMP(0.0)

#35 MD(3257.00) Inc(10.0) Azm(139.0) TVD(3240.71)
VS(-104.36) NS(-122.09) EW(128.78) TEMP(0.0)

#36 MD(3352.00) Inc(9.1) Azm(135.6) TVD(3334.39)
VS(-114.47) NS(-133.68) EW(139.45) TEMP(0.0)

#37 MD(3447.00) Inc(9.3) Azm(142.6) TVD(3428.17)
VS(-124.55) NS(-145.15) EW(149.37) TEMP(0.0)



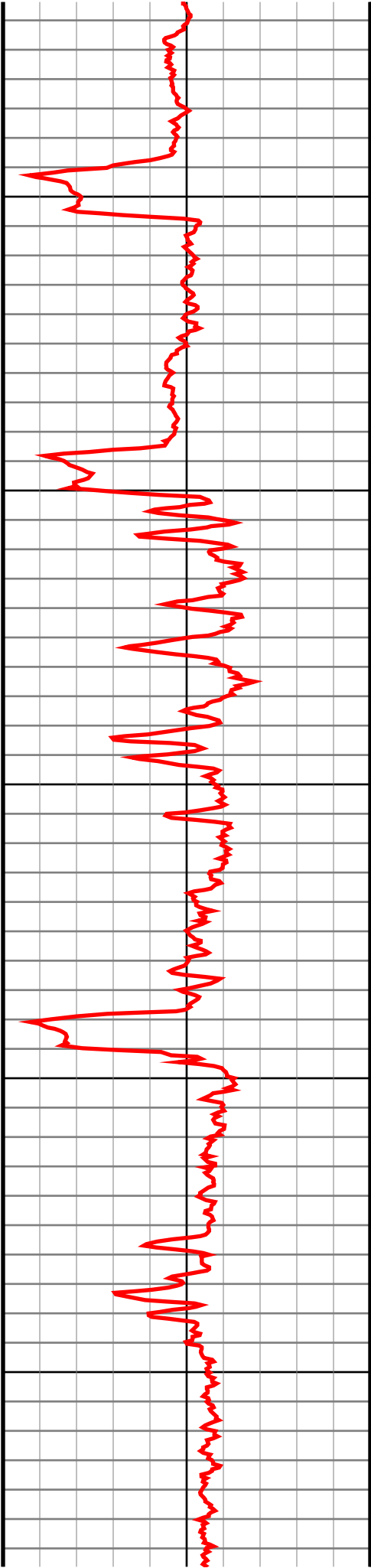
3600

3700

3800

3900

4000



#38 MD(3542.00) Inc(10.0) Azm(143.5) TVD(3521.83)
VS(-135.93) NS(-157.87) EW(158.94) TEMP(0.0)

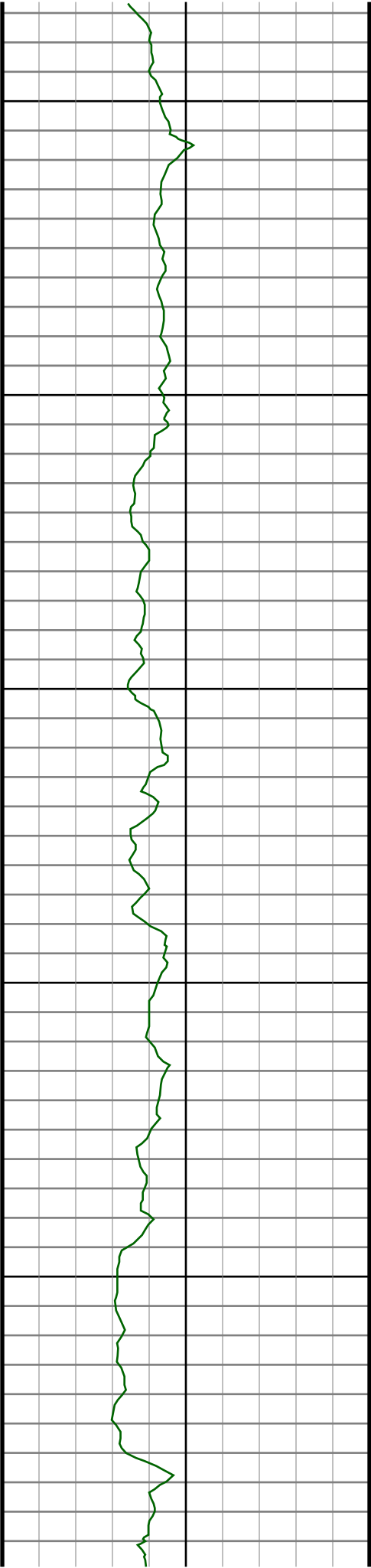
#39 MD(3637.00) Inc(10.6) Azm(143.5) TVD(3615.30)
VS(-148.16) NS(-171.53) EW(169.04) TEMP(0.0)

#40 MD(3733.00) Inc(13.0) Azm(144.9) TVD(3709.26)
VS(-162.48) NS(-187.46) EW(180.50) TEMP(0.0)

#41 MD(3828.00) Inc(13.5) Azm(146.5) TVD(3801.73)
VS(-178.72) NS(-205.45) EW(192.77) TEMP(0.0)

#42 MD(3923.00) Inc(14.5) Azm(141.6) TVD(3893.91)
VS(-195.38) NS(-224.02) EW(206.28) TEMP(0.0)

#43 MD(4018.00) Inc(15.0) Azm(142.5) TVD(3985.78)
VS(-212.37) NS(-243.09) EW(221.15) TEMP(0.0)



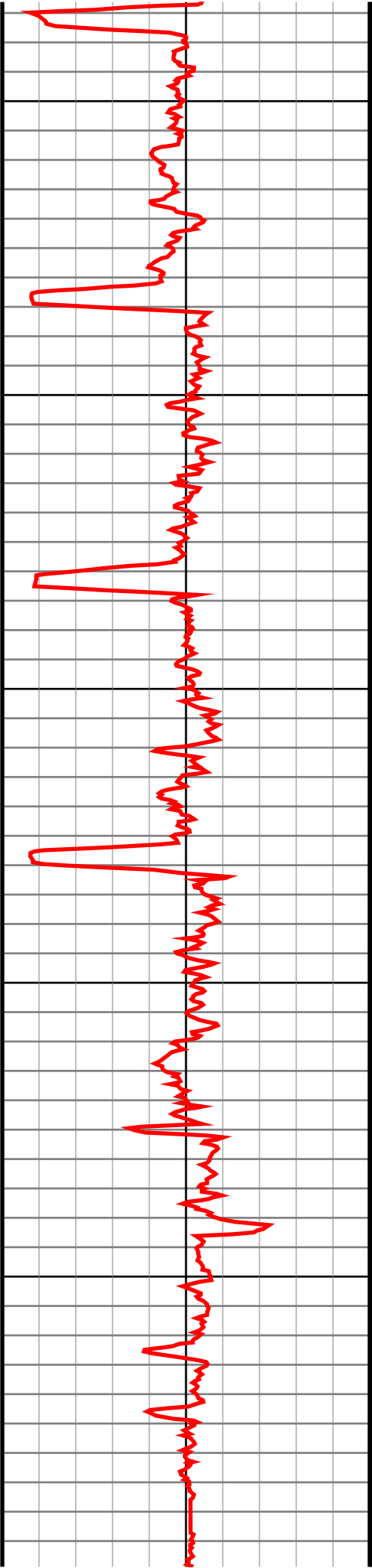
4100

4200

4300

4400

4500



#44 MD(4113.00) Inc(13.1) Azm(140.2) TVD(4077.94)
VS(-228.38) NS(-261.12) EW(235.53) TEMP(0.0)

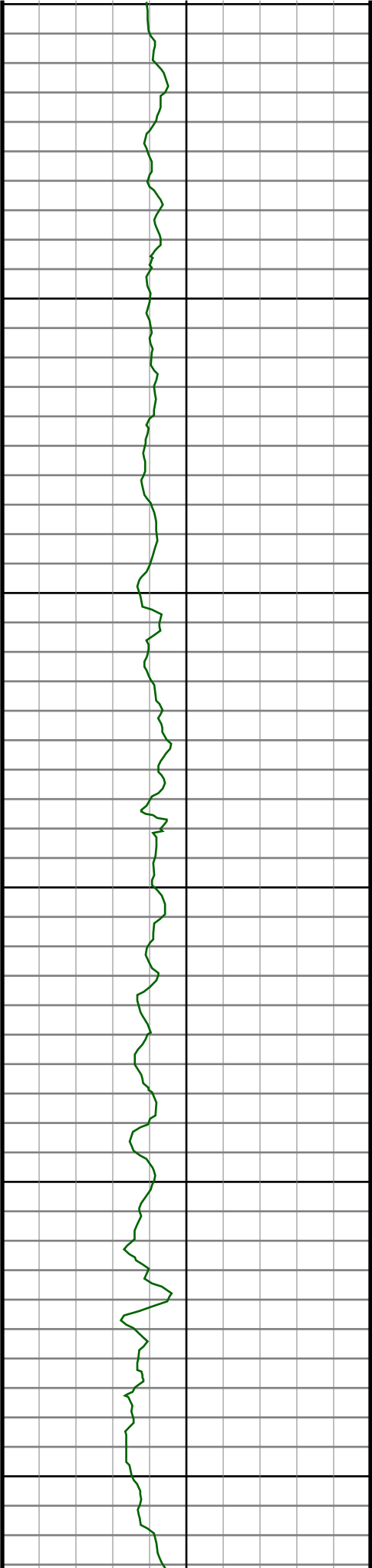
#45 MD(4209.00) Inc(11.4) Azm(129.6) TVD(4171.76)
VS(-240.81) NS(-275.53) EW(249.80) TEMP(0.0)

#46 MD(4304.00) Inc(10.2) Azm(132.3) TVD(4265.08)
VS(-250.62) NS(-287.18) EW(263.26) TEMP(0.0)

#47 MD(4399.00) Inc(9.4) Azm(137.9) TVD(4358.69)
VS(-260.46) NS(-298.59) EW(274.68) TEMP(0.0)

#48 MD(4494.00) Inc(8.9) Azm(138.6) TVD(4452.48)
VS(-270.33) NS(-309.86) EW(284.74) TEMP(0.0)

#49 MD(4589.00) Inc(8.3) Azm(137.4) TVD(4546.41)
VS(-279.57) NS(-320.42) EW(294.24) TEMP(0.0)



4600

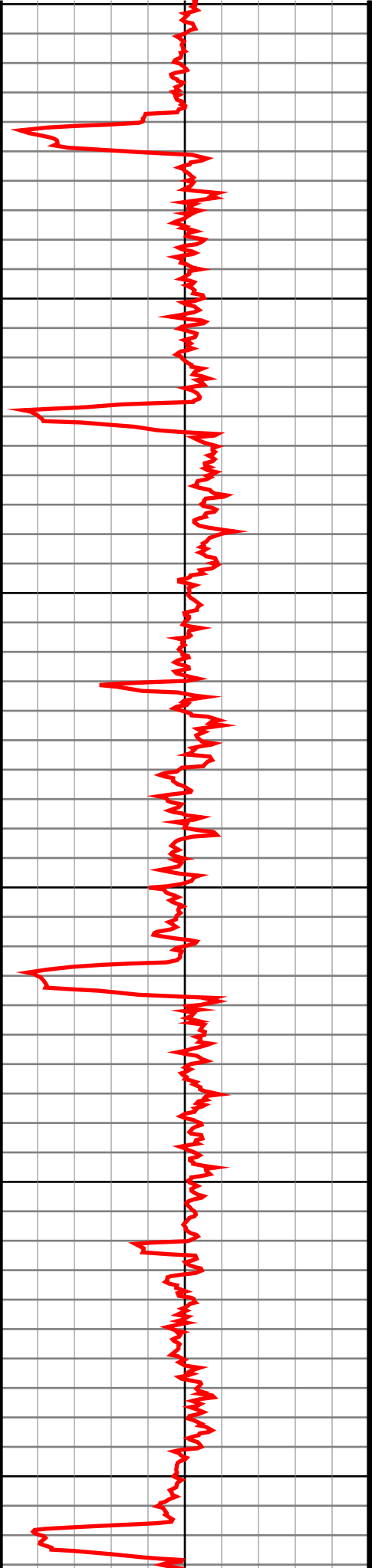
4700

4800

4900

5000

5100



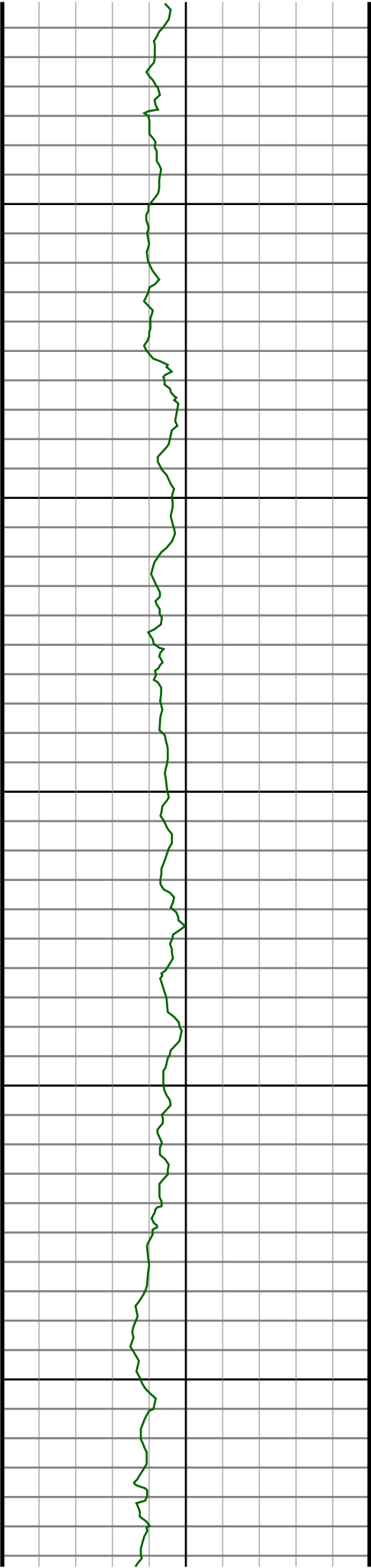
#50 MD(4684.00) Inc(8.7) Azm(132.5) TVD(4640.37)
VS(-288.09) NS(-330.32) EW(304.18) TEMP(0.0)

#51 MD(4780.00) Inc(9.7) Azm(134.0) TVD(4735.13)
VS(-297.08) NS(-340.85) EW(315.35) TEMP(0.0)

#52 MD(4875.00) Inc(8.4) Azm(133.0) TVD(4828.95)
VS(-305.88) NS(-351.14) EW(326.19) TEMP(0.0)

#53 MD(4970.00) Inc(9.3) Azm(133.2) TVD(4922.82)
VS(-314.40) NS(-361.13) EW(336.86) TEMP(0.0)

#54 MD(5065.00) Inc(8.7) Azm(131.6) TVD(5016.65)
VS(-322.92) NS(-371.15) EW(347.83) TEMP(0.0)



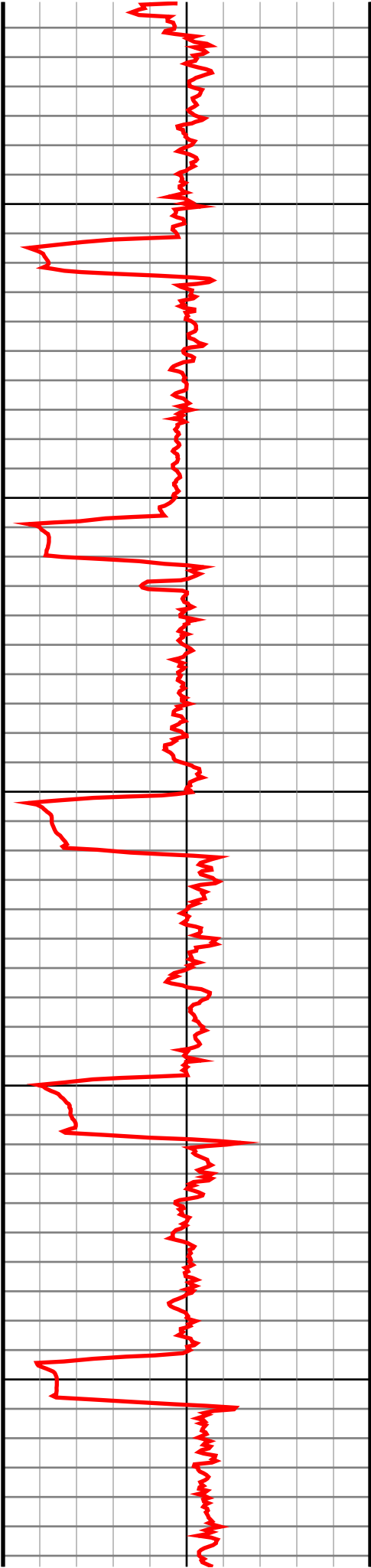
5200

5300

5400

5500

5600



#55 MD(5161.00) Inc(7.2) Azm(134.7) TVD(5111.72)
VS(-330.64) NS(-380.20) EW(357.53) TEMP(0.0)

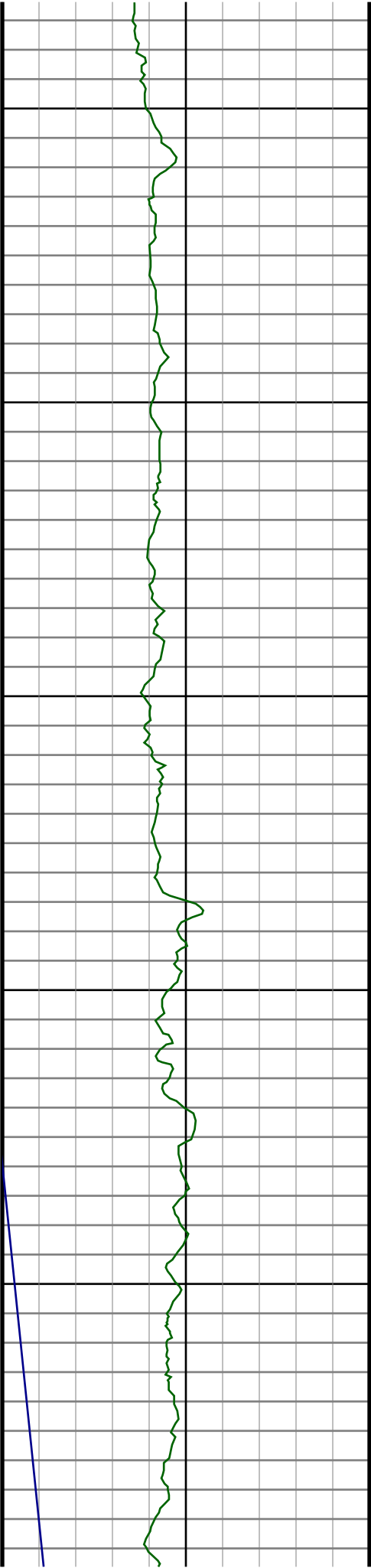
#56 MD(5256.00) Inc(6.9) Azm(139.1) TVD(5206.01)
VS(-338.03) NS(-388.71) EW(365.50) TEMP(0.0)

#57 MD(5351.00) Inc(7.5) Azm(136.3) TVD(5300.26)
VS(-345.71) NS(-397.50) EW(373.52) TEMP(0.0)

#58 MD(5446.00) Inc(8.1) Azm(138.1) TVD(5394.38)
VS(-353.96) NS(-406.96) EW(382.27) TEMP(0.0)

#59 MD(5541.00) Inc(8.8) Azm(135.8) TVD(5488.35)
VS(-362.83) NS(-417.16) EW(391.81) TEMP(0.0)

#60 MD(5636.00) Inc(8.7) Azm(136.7) TVD(5582.24)
VS(-371.89) NS(-427.59) EW(401.80) TEMP(0.0)



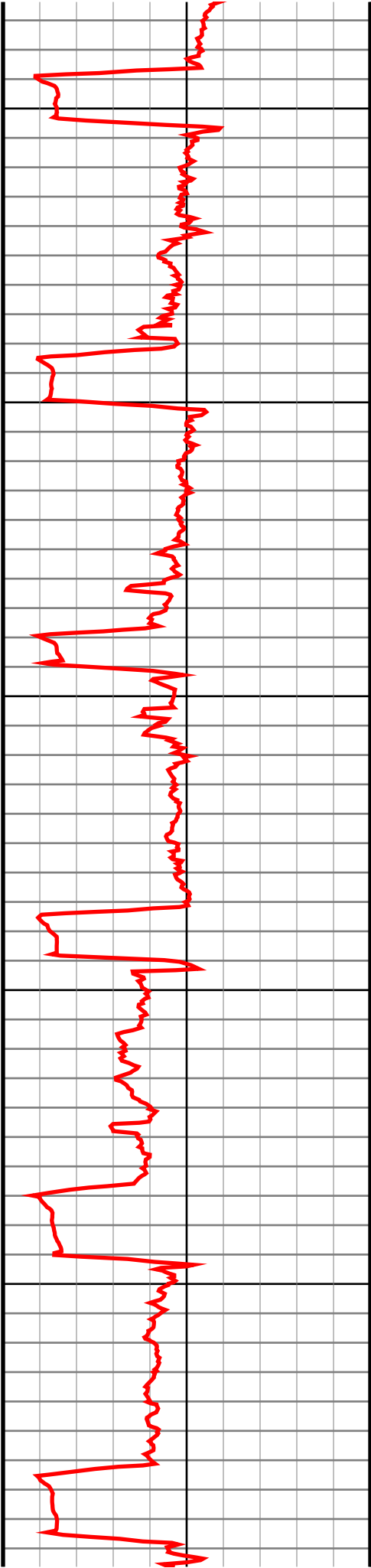
5700

5800

5900

6000

6100



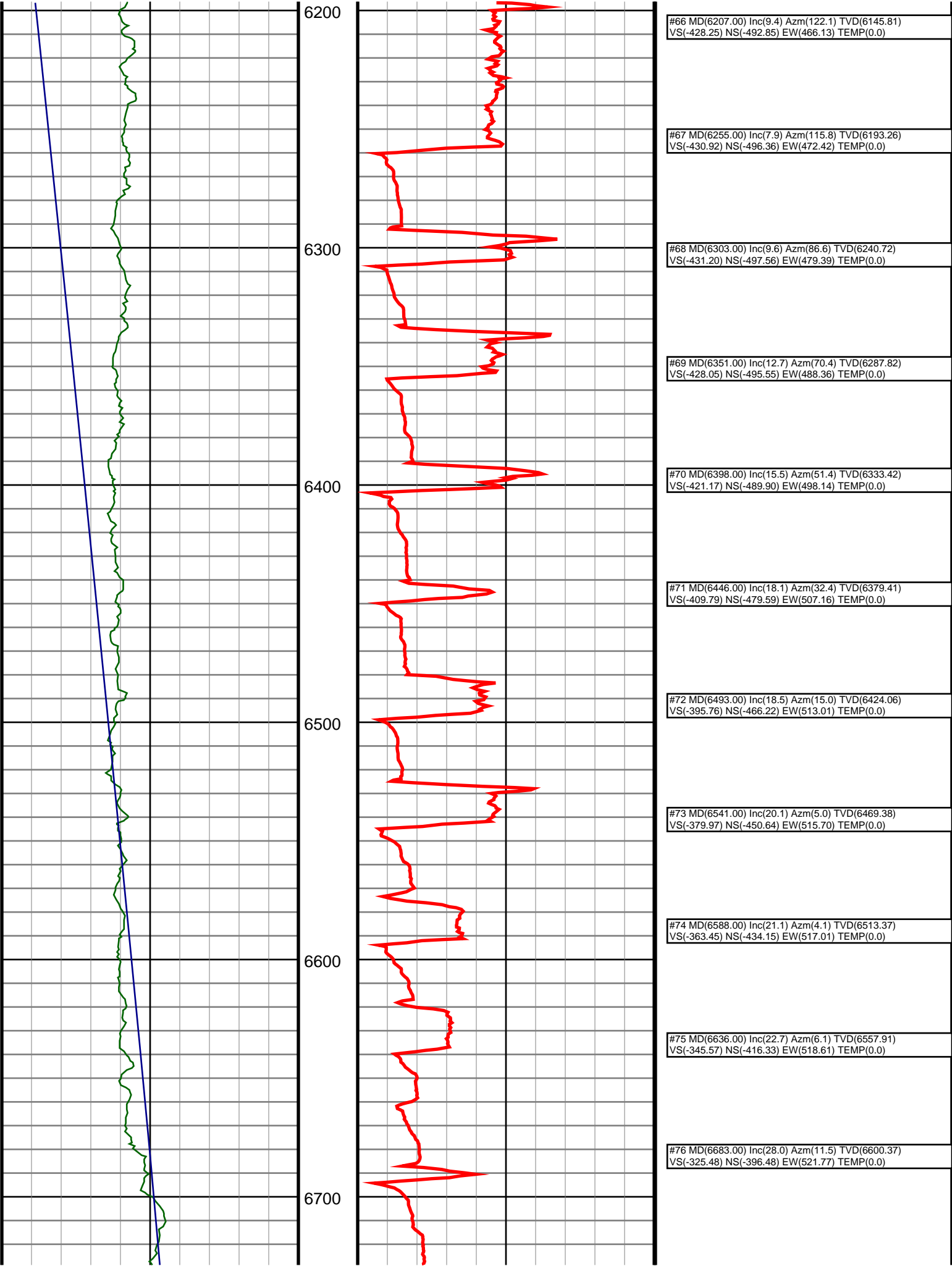
#61 MD(5731.00) Inc(9.2) Azm(138.1) TVD(5676.08)
VS(-381.38) NS(-438.48) EW(411.80) TEMP(0.0)

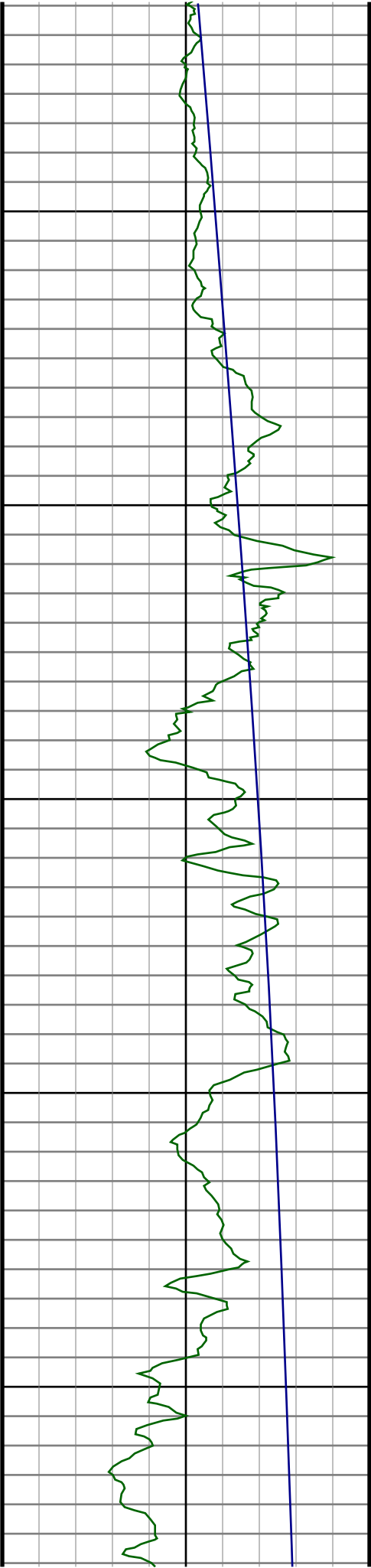
#62 MD(5826.00) Inc(9.8) Azm(137.9) TVD(5769.78)
VS(-391.57) NS(-450.13) EW(422.29) TEMP(0.0)

#63 MD(5922.00) Inc(9.4) Azm(135.1) TVD(5864.44)
VS(-401.66) NS(-461.74) EW(433.31) TEMP(0.0)

#64 MD(6017.00) Inc(8.6) Azm(135.8) TVD(5958.27)
VS(-410.81) NS(-472.33) EW(443.73) TEMP(0.0)

#65 MD(6112.00) Inc(9.5) Azm(136.1) TVD(6052.08)
VS(-420.11) NS(-483.07) EW(454.12) TEMP(0.0)





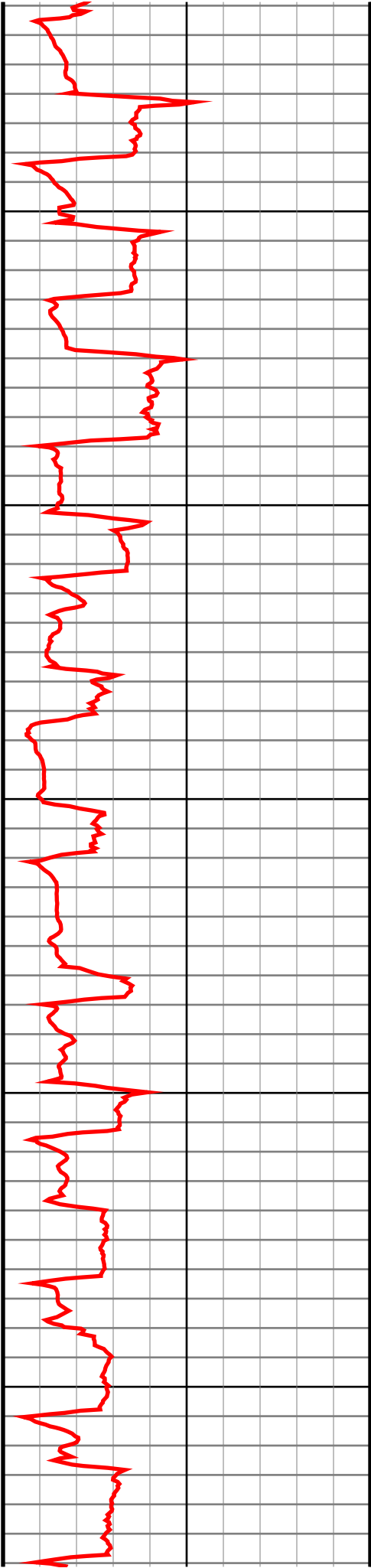
6800

6900

7000

7100

7200



#77 MD(6731.00) Inc(35.3) Azm(12.9) TVD(6641.21) VS(-300.40) NS(-371.89) EW(527.12) TEMP(0.0)
#78 MD(6778.00) Inc(39.1) Azm(12.4) TVD(6678.64) VS(-272.11) NS(-344.16) EW(533.34) TEMP(0.0)
#79 MD(6826.00) Inc(41.9) Azm(11.0) TVD(6715.13) VS(-241.02) NS(-313.64) EW(539.65) TEMP(0.0)
#80 MD(6873.00) Inc(43.0) Azm(10.3) TVD(6749.81) VS(-209.35) NS(-282.47) EW(545.51) TEMP(0.0)
#81 MD(6921.00) Inc(46.5) Azm(9.2) TVD(6783.90) VS(-175.59) NS(-249.17) EW(551.22) TEMP(0.0)
#82 MD(6969.00) Inc(49.9) Azm(6.9) TVD(6815.89) VS(-139.82) NS(-213.74) EW(556.21) TEMP(0.0)
#83 MD(7017.00) Inc(54.0) Azm(4.5) TVD(6845.47) VS(-102.05) NS(-176.14) EW(559.94) TEMP(0.0)
#84 MD(7064.00) Inc(59.8) Azm(3.8) TVD(6871.12) VS(-62.76) NS(-136.89) EW(562.78) TEMP(0.0)
#85 MD(7112.00) Inc(64.7) Azm(3.1) TVD(6893.47) VS(-20.40) NS(-94.50) EW(565.33) TEMP(0.0)
#86 MD(7159.00) Inc(68.1) Azm(3.3) TVD(6912.28) VS(22.54) NS(-51.50) EW(567.74) TEMP(0.0)
#87 MD(7207.00) Inc(69.3) Azm(3.3) TVD(6929.72) VS(67.15) NS(-6.86) EW(570.31) TEMP(0.0)
#88 MD(7254.00) Inc(70.7) Azm(3.6) TVD(6945.79) VS(111.20) NS(37.23) EW(572.97) TEMP(0.0)

DRILL OUT SHOE -
GAMMA SENSOR
STILL IN CASING

7300

7400

7500

7600

7700

#89 MD(7302.00) Inc(75.0) Azm(3.3) TVD(6959.94)
VS(156.95) NS(83.00) EW(575.73) TEMP(0.0)

#90 MD(7349.00) Inc(82.8) Azm(1.8) TVD(6968.98)
VS(202.86) NS(129.04) EW(577.77) TEMP(0.0)

#91 MD(7397.00) Inc(86.2) Azm(1.5) TVD(6973.58)
VS(250.39) NS(176.79) EW(579.15) TEMP(0.0)

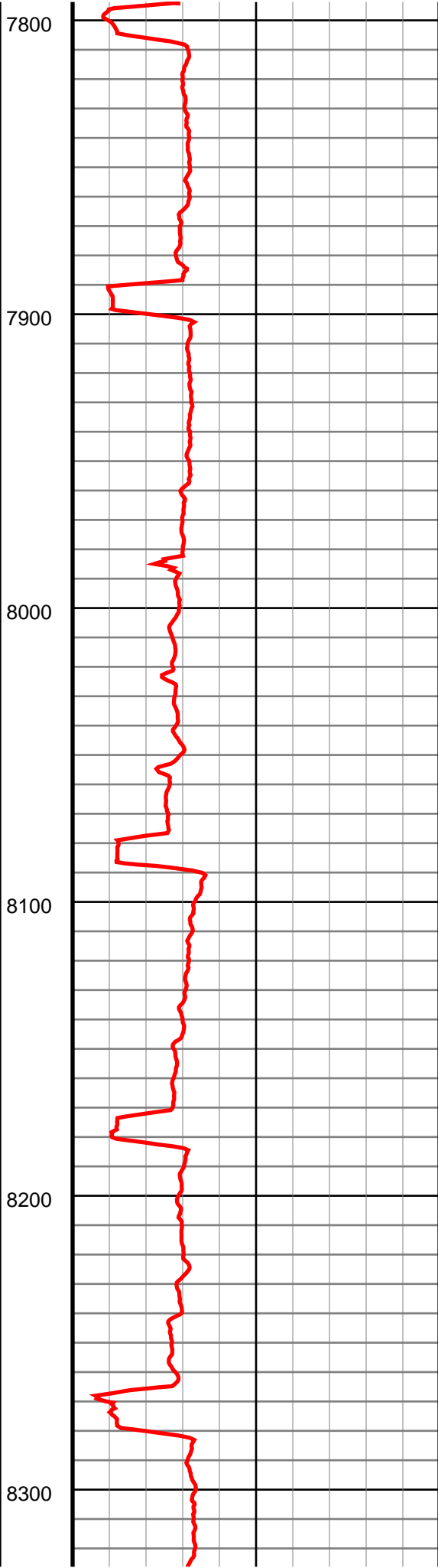
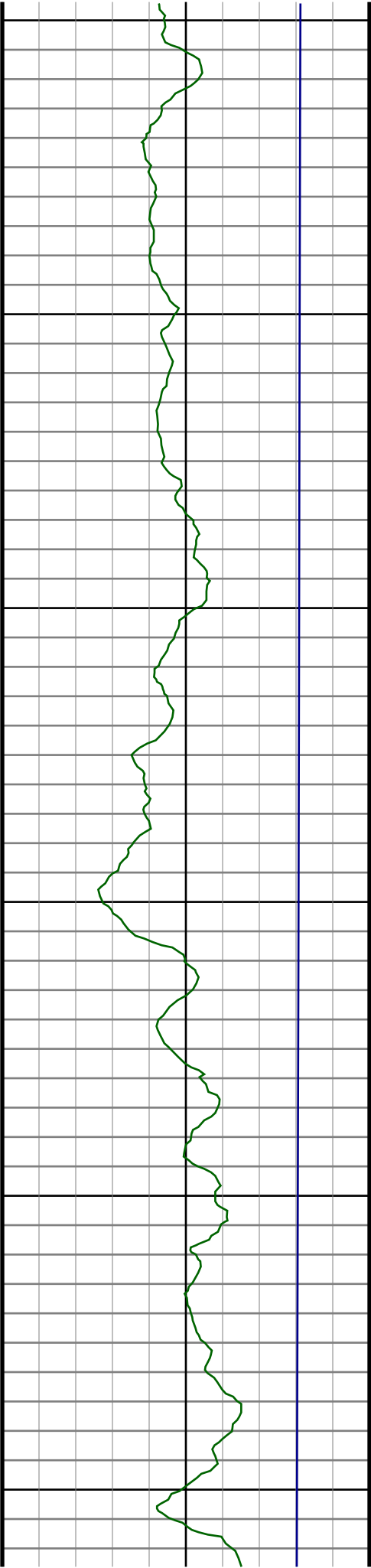
#92 MD(7430.00) Inc(87.1) Azm(1.3) TVD(6975.51)
VS(283.15) NS(209.72) EW(579.95) TEMP(0.0)

#93 MD(7507.00) Inc(87.5) Azm(1.8) TVD(6979.14)
VS(359.66) NS(286.61) EW(582.03) TEMP(0.0)

#94 MD(7554.00) Inc(88.6) Azm(2.0) TVD(6980.74)
VS(406.41) NS(333.56) EW(583.59) TEMP(0.0)

#95 MD(7648.00) Inc(92.6) Azm(0.3) TVD(6979.75)
VS(499.81) NS(427.51) EW(585.48) TEMP(0.0)

#96 MD(7742.00) Inc(92.0) Azm(359.2) TVD(6975.98)
VS(592.89) NS(521.43) EW(585.07) TEMP(0.0)



#97 MD(7836.00) Inc(91.4) Azm(359.2) TVD(6973.19)
VS(685.87) NS(615.38) EW(583.75) TEMP(0.0)

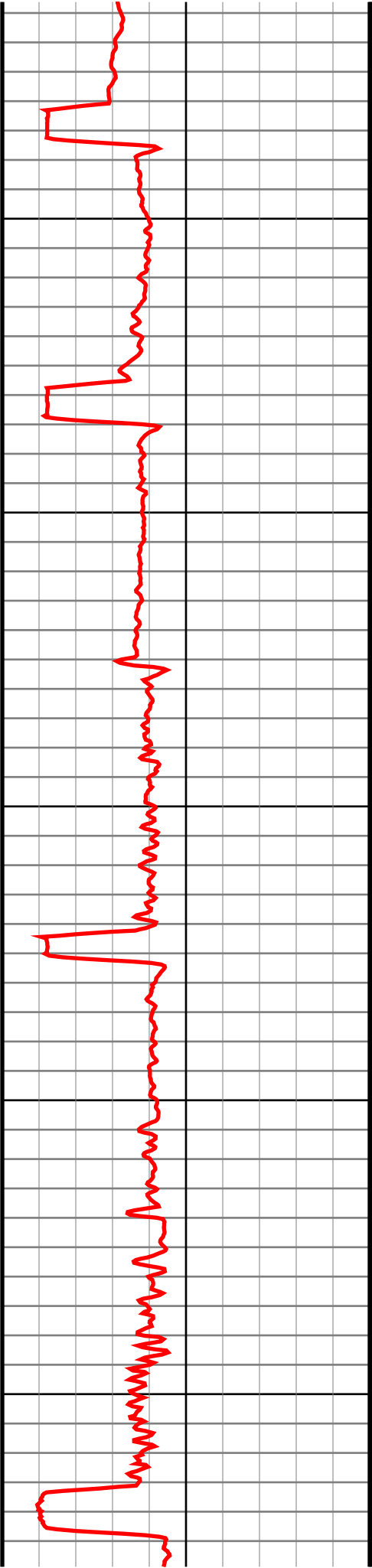
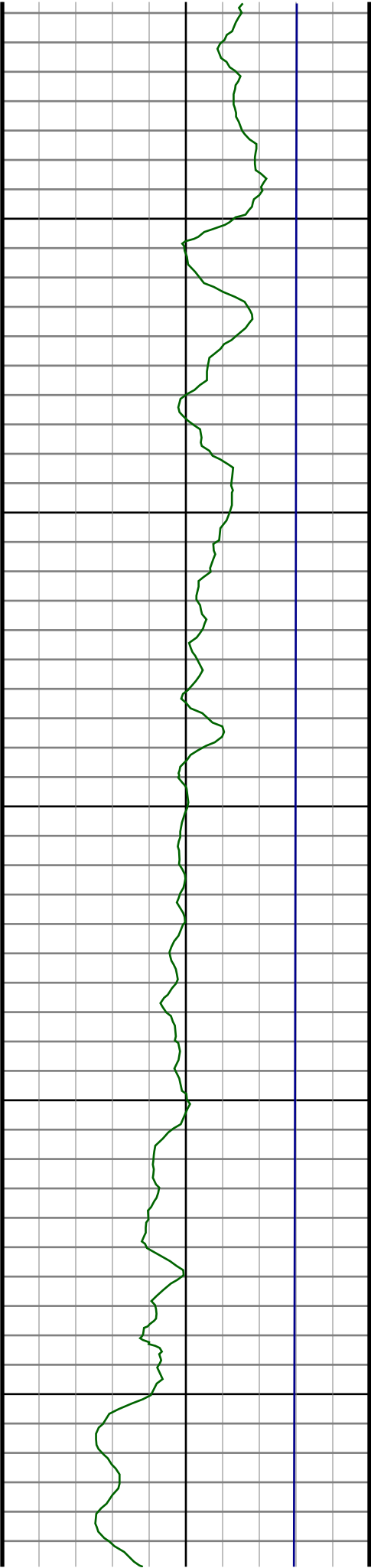
#98 MD(7930.00) Inc(91.0) Azm(358.9) TVD(6971.22)
VS(778.85) NS(709.35) EW(582.20) TEMP(0.0)

#99 MD(8024.00) Inc(90.8) Azm(358.3) TVD(6969.75)
VS(871.71) NS(803.30) EW(579.90) TEMP(0.0)

#100 MD(8119.00) Inc(91.5) Azm(358.7) TVD(6967.84)
VS(965.54) NS(898.25) EW(577.41) TEMP(0.0)

#101 MD(8212.00) Inc(91.4) Azm(359.2) TVD(6965.49)
VS(1057.49) NS(991.21) EW(575.71) TEMP(0.0)

#102 MD(8307.00) Inc(91.7) Azm(359.4) TVD(6962.92)
VS(1151.49) NS(1086.16) EW(574.55) TEMP(0.0)



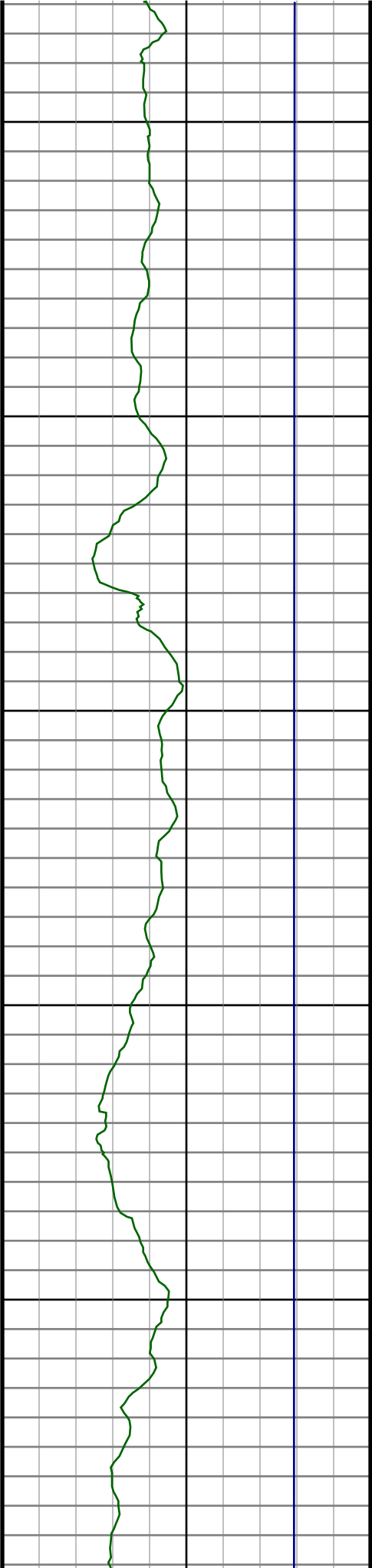
#103 MD(8401.00) Inc(90.9) Azm(359.9) TVD(6960.79)
VS(1244.60) NS(1180.14) EW(573.98) TEMP(0.0)

#104 MD(8495.00) Inc(90.4) Azm(0.8) TVD(6959.72)
VS(1337.87) NS(1274.13) EW(574.55) TEMP(0.0)

#105 MD(8589.00) Inc(91.1) Azm(0.1) TVD(6958.49)
VS(1431.16) NS(1368.12) EW(575.29) TEMP(0.0)

#106 MD(8683.00) Inc(90.7) Azm(0.4) TVD(6957.01)
VS(1524.41) NS(1462.10) EW(575.70) TEMP(0.0)

#107 MD(8778.00) Inc(91.8) Azm(0.1) TVD(6954.94)
VS(1618.63) NS(1557.08) EW(576.11) TEMP(0.0)



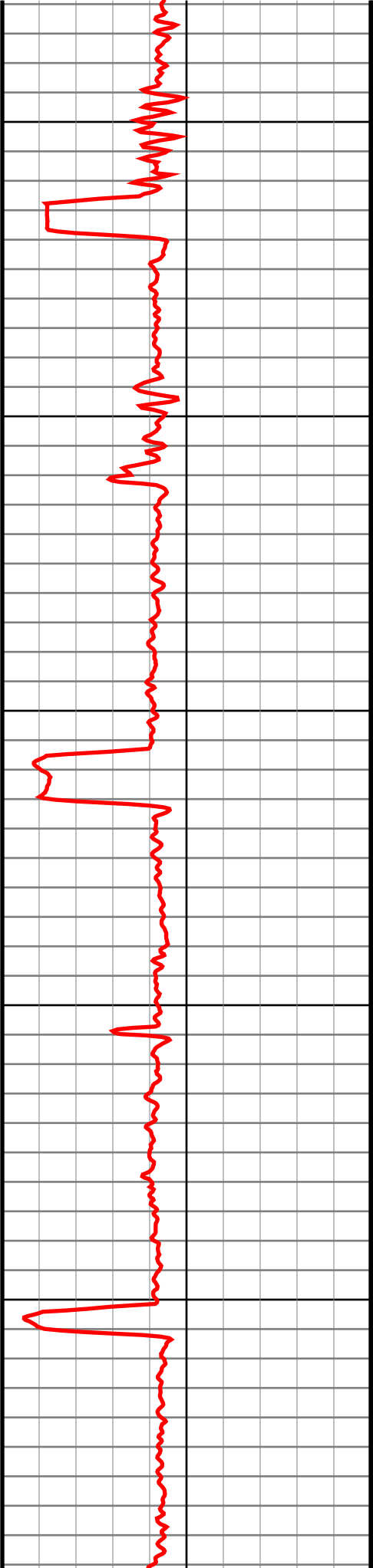
8900

9000

9100

9200

9300



#108 MD(8872.00) Inc(90.9) Azm(359.9) TVD(6952.73)
VS(1711.81) NS(1651.05) EW(576.11) TEMP(0.0)

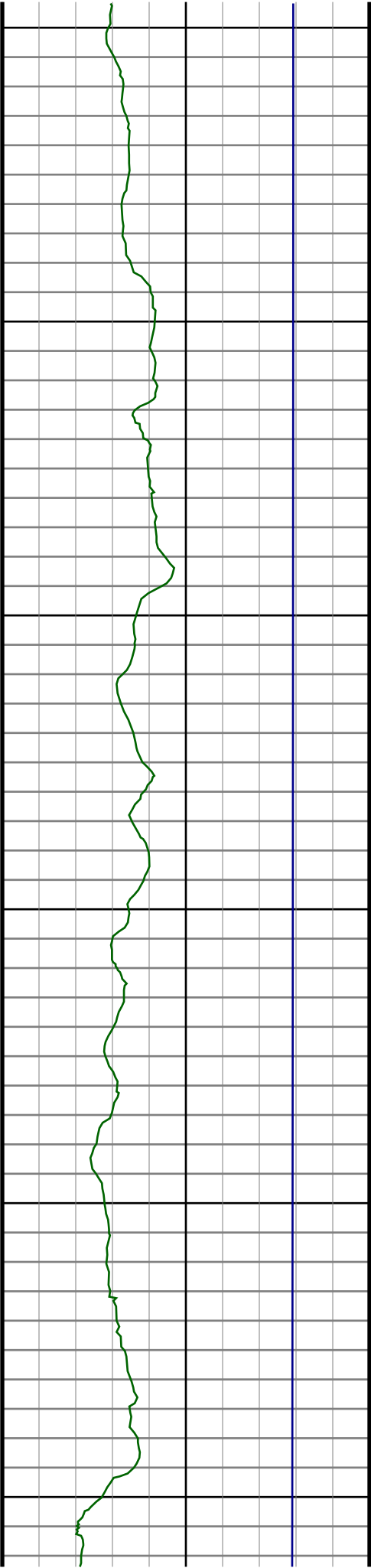
#109 MD(8966.00) Inc(89.9) Azm(359.0) TVD(6952.07)
VS(1804.89) NS(1745.04) EW(575.21) TEMP(0.0)

#110 MD(9060.00) Inc(90.7) Azm(359.2) TVD(6951.58)
VS(1897.90) NS(1839.03) EW(573.73) TEMP(0.0)

#111 MD(9154.00) Inc(90.0) Azm(359.9) TVD(6951.00)
VS(1991.00) NS(1933.02) EW(573.00) TEMP(0.0)

#112 MD(9249.00) Inc(90.2) Azm(359.6) TVD(6950.84)
VS(2085.14) NS(2028.02) EW(572.58) TEMP(0.0)

#113 MD(9342.00) Inc(89.9) Azm(359.7) TVD(6950.76)
VS(2177.28) NS(2121.02) EW(572.01) TEMP(0.0)



9400

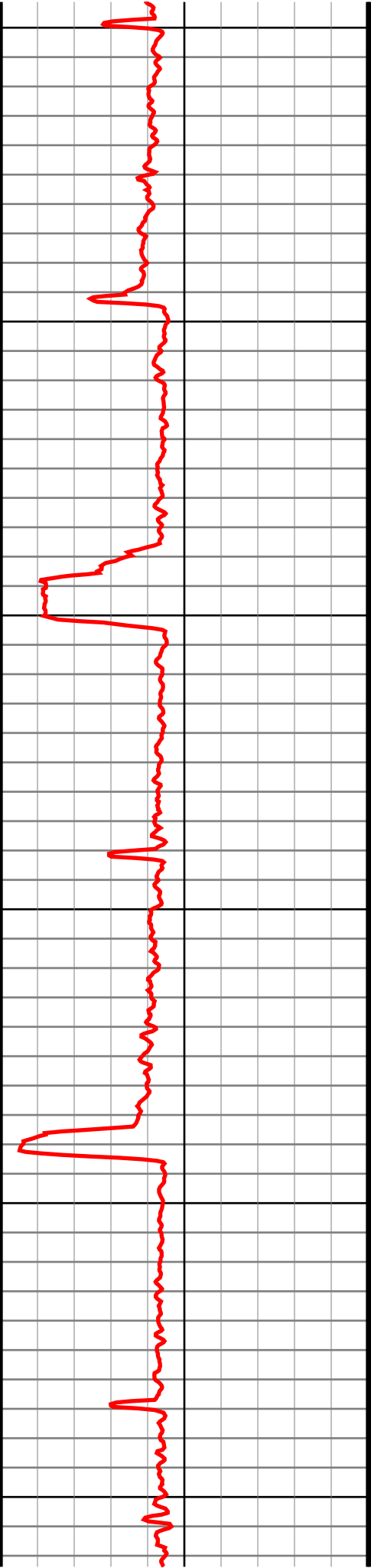
9500

9600

9700

9800

9900



#114 MD(9436.00) Inc(89.9) Azm(359.4) TVD(6950.92)
VS(2270.39) NS(2215.02) EW(571.27) TEMP(0.0)

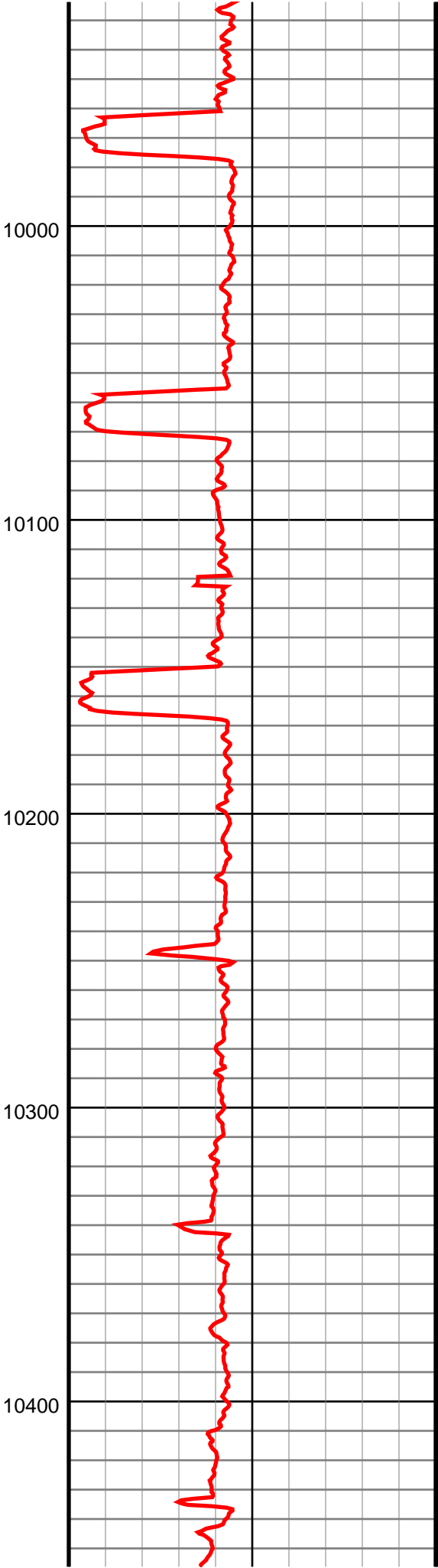
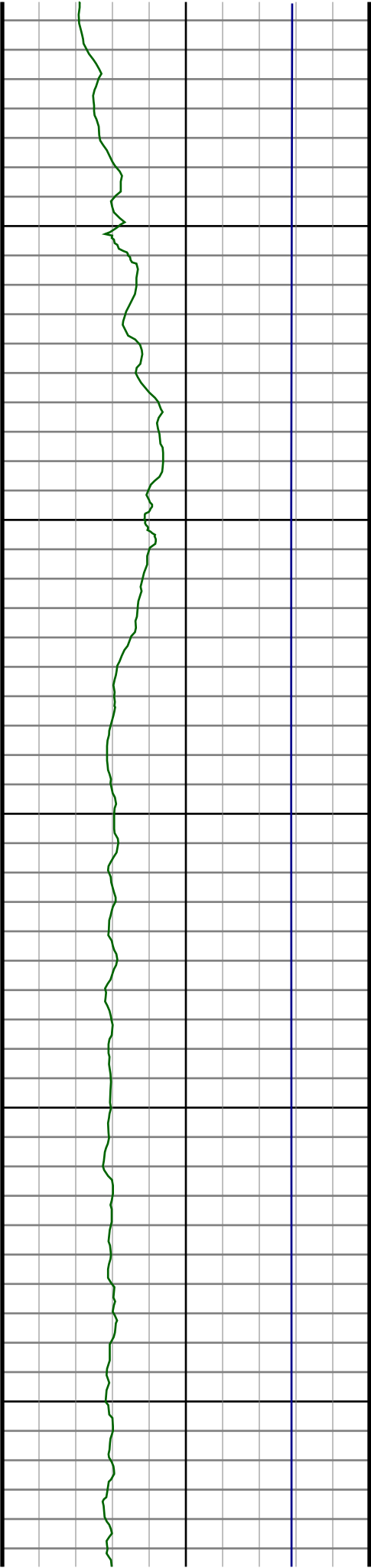
#115 MD(9530.00) Inc(90.5) Azm(358.9) TVD(6950.59)
VS(2363.40) NS(2309.01) EW(569.88) TEMP(0.0)

#116 MD(9624.00) Inc(90.2) Azm(359.7) TVD(6950.02)
VS(2456.45) NS(2403.00) EW(568.73) TEMP(0.0)

#117 MD(9718.00) Inc(90.6) Azm(359.4) TVD(6949.36)
VS(2549.56) NS(2496.99) EW(567.99) TEMP(0.0)

#118 MD(9812.00) Inc(90.3) Azm(359.6) TVD(6948.62)
VS(2642.65) NS(2590.98) EW(567.17) TEMP(0.0)

#119 MD(9907.00) Inc(90.8) Azm(358.9) TVD(6947.71)
VS(2736.68) NS(2685.97) EW(565.93) TEMP(0.0)



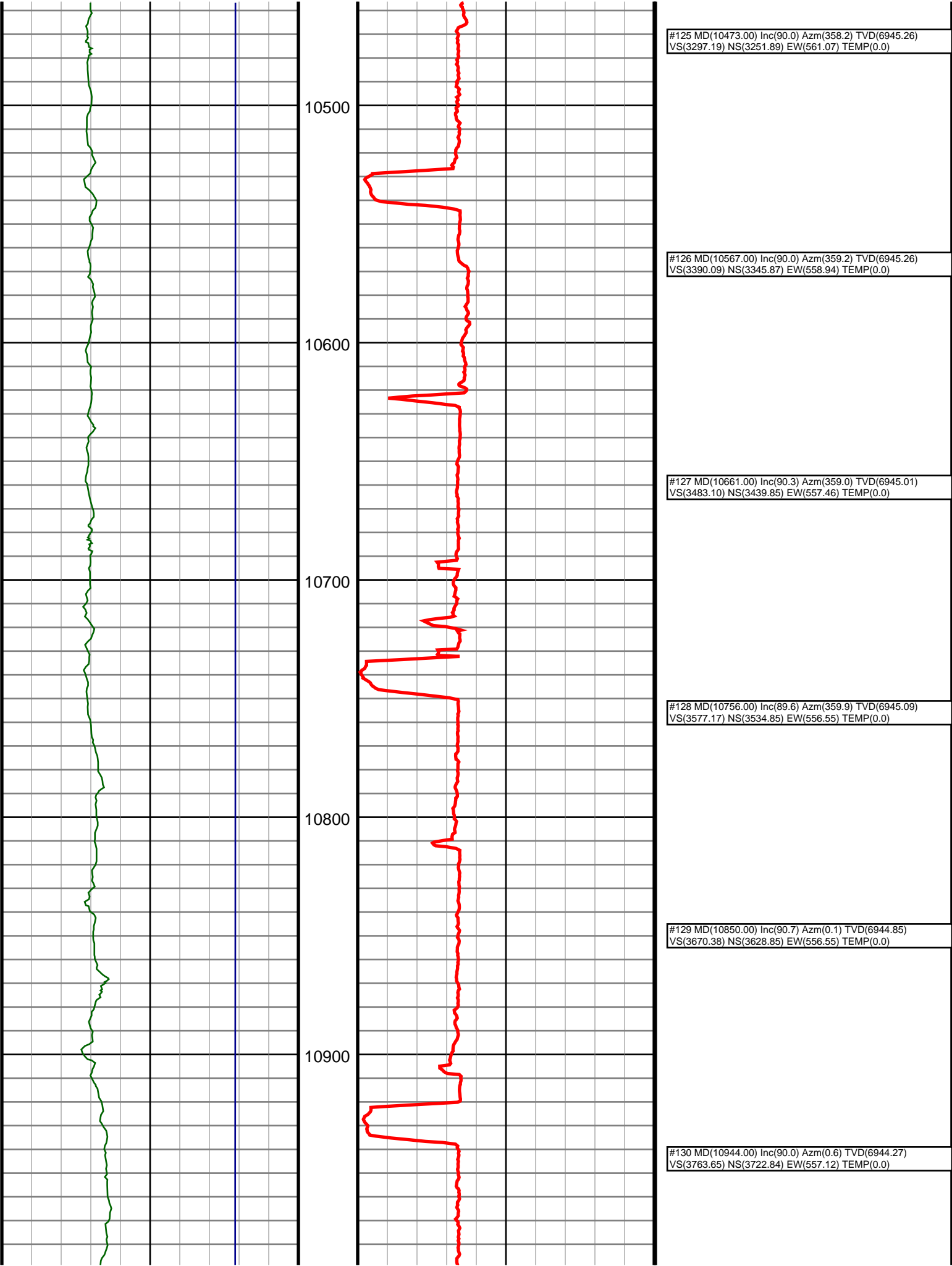
#120 MD(10001.00) Inc(91.4) Azm(359.7) TVD(6945.91)
VS(2829.71) NS(2779.94) EW(564.78) TEMP(0.0)

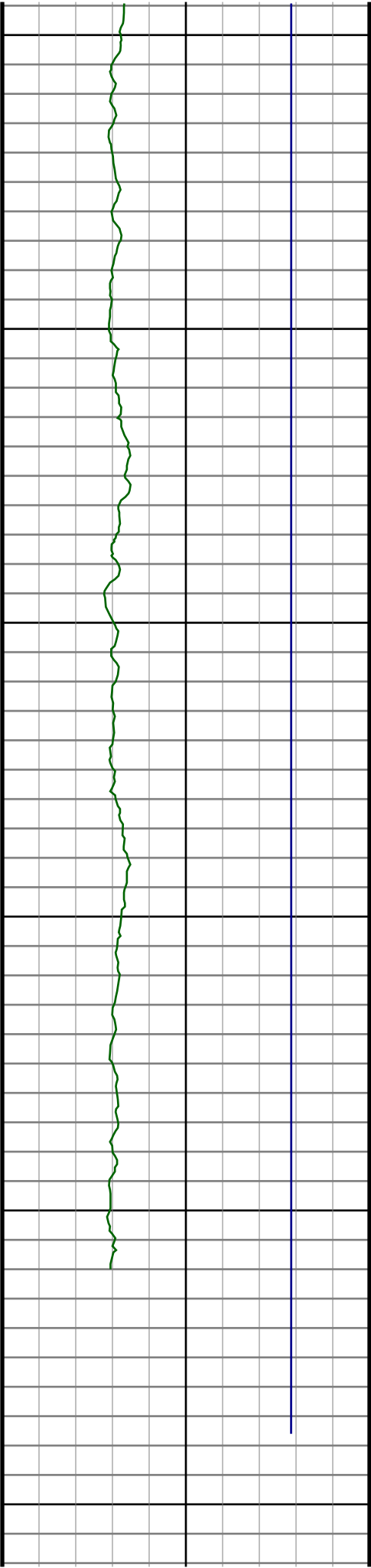
#121 MD(10095.00) Inc(90.5) Azm(359.2) TVD(6944.35)
VS(2922.78) NS(2873.93) EW(563.88) TEMP(0.0)

#122 MD(10189.00) Inc(89.7) Azm(0.3) TVD(6944.18)
VS(3015.93) NS(2967.92) EW(563.47) TEMP(0.0)

#123 MD(10284.00) Inc(89.6) Azm(0.1) TVD(6944.76)
VS(3110.17) NS(3062.92) EW(563.80) TEMP(0.0)

#124 MD(10378.00) Inc(89.9) Azm(359.2) TVD(6945.17)
VS(3203.30) NS(3156.92) EW(563.23) TEMP(0.0)





11000

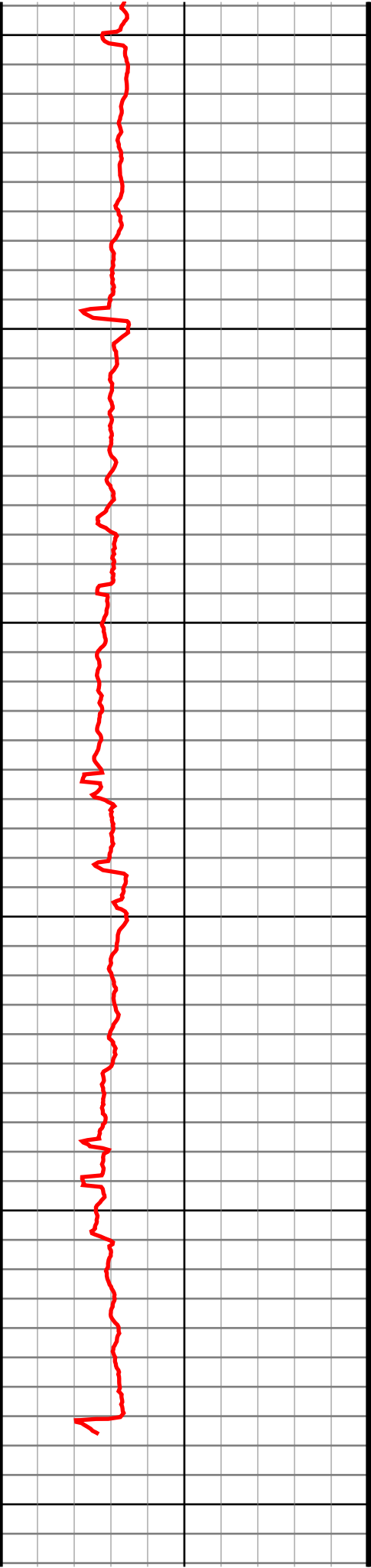
11100

11200

11300

11400

11500



#131 MD(11038.00) Inc(90.0) Azm(359.9) TVD(6944.27)
VS(3856.91) NS(3816.84) EW(557.53) TEMP(0.0)

#132 MD(11133.00) Inc(90.1) Azm(359.9) TVD(6944.19)
VS(3951.09) NS(3911.84) EW(557.37) TEMP(0.0)

#133 MD(11227.00) Inc(90.0) Azm(358.9) TVD(6944.11)
VS(4044.16) NS(4005.83) EW(556.38) TEMP(0.0)

#134 MD(11321.00) Inc(89.7) Azm(358.5) TVD(6944.36)
VS(4137.06) NS(4099.81) EW(554.25) TEMP(0.0)

#135 MD(11421.00) Inc(90.4) Azm(358.0) TVD(6944.27)
VS(4235.78) NS(4199.76) EW(551.20) TEMP(0.0)

Gamma		
API		
0.0		300.0
300.0		600.0
TVD		
ft		
6000.0		7200.0
7200.0		14400.0

ROP		
0		
0.0		800.0
800.0		1600.0