



MATRIX K-29HN

TVD
2":100'

Directional Services

Company: Bayswater Exploration & Production, LLC

Well Name: Matrix K-29HN

API: 05-123-40702-00

Rig Id: Frontier 8

State: CO

County/Parish: Weld

Country: United States

Survey Company: Ensign Directional Services

Job number:

DIR. DRILLER DAY Kabel Skelton

DIR. DRILLER NIGHT Kody Woods

LWD/MWD DAYS Matt Brokaw

LWD/MWD NIGHTS Tyler Teague

Log measurements: Gamma
Depth measured from: Rig Floor
Maximum temperature:

Depth Date
Start: 7480 ft 3/10/2015
End: 11476 ft 3/11/2015

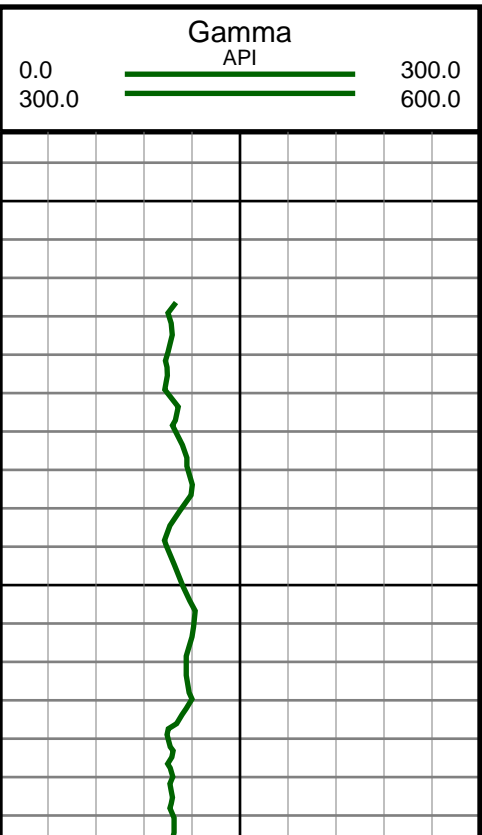
Casing Depth Size
Surface: 748 9.63
Intermediate: 7469 7

Mud Type:
Density:
Viscosity:
Rm: Rmf: Rmc:

Elevations
KB: 4730.5
GL: 4708
DF: 4730.5

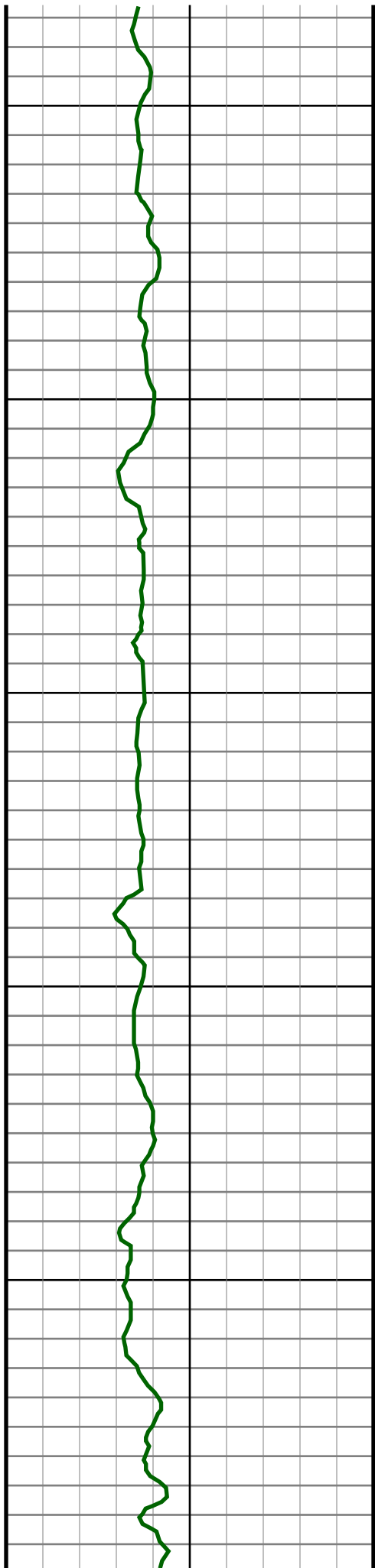
Run	Bit Size	Offsets		Start		End		Dates	
		Gamma	Survey	Start	End	Start	End	Start	End
1	8.75	51.53	46.53	760	7480	1/13/2015	1/15/2015		
2	6.125	56.10	53.19	7480	11476	3/10/2015	3/11/15		
3									
4									
5									
6									
7									
8									
9									
10									

Ensign Directional Services uses its best efforts to provide its customers with accurate information and interpretations in conjunction with services performed but will not be held liable or responsible for the accuracy of such information or interpretation.

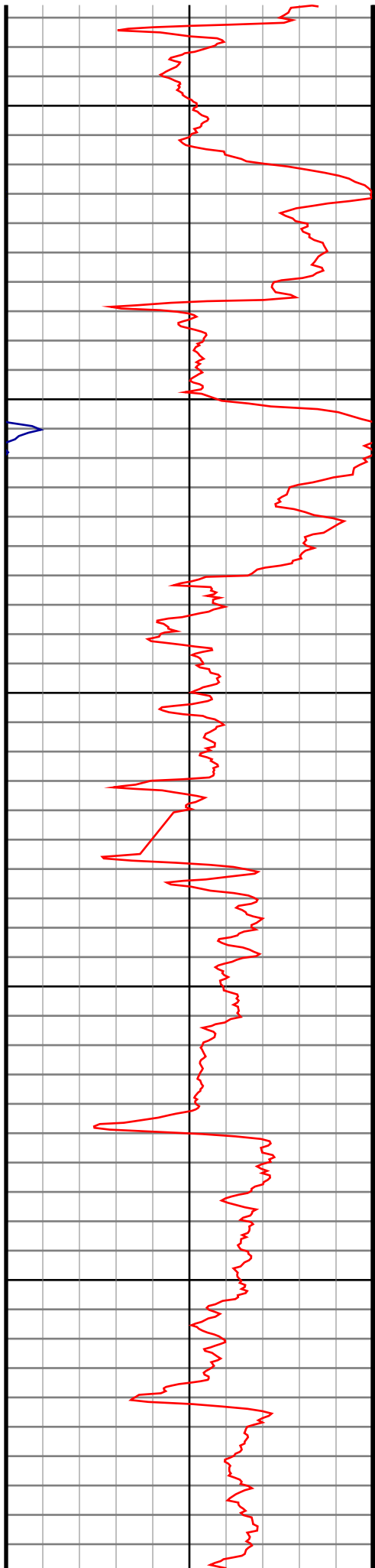


#9 MD(828.00) Inc(1.1) Azm(327.4) TVD(827.95)
VS(6.03) NS(6.81) EW(-5.54) TEMP(0.0)

#10 MD(923.00) Inc(1.0) Azm(322.3) TVD(922.93)
VS(7.32) NS(6.23) EW(-6.54) TEMP(0.0)



1000
1100
1200
1300
1400



#11 MD(1018.00) Inc(1.1) Azm(320.0) TVD(1017.92)
VS(8.52) NS(9.59) EW(-7.63) TEMP(0.0)

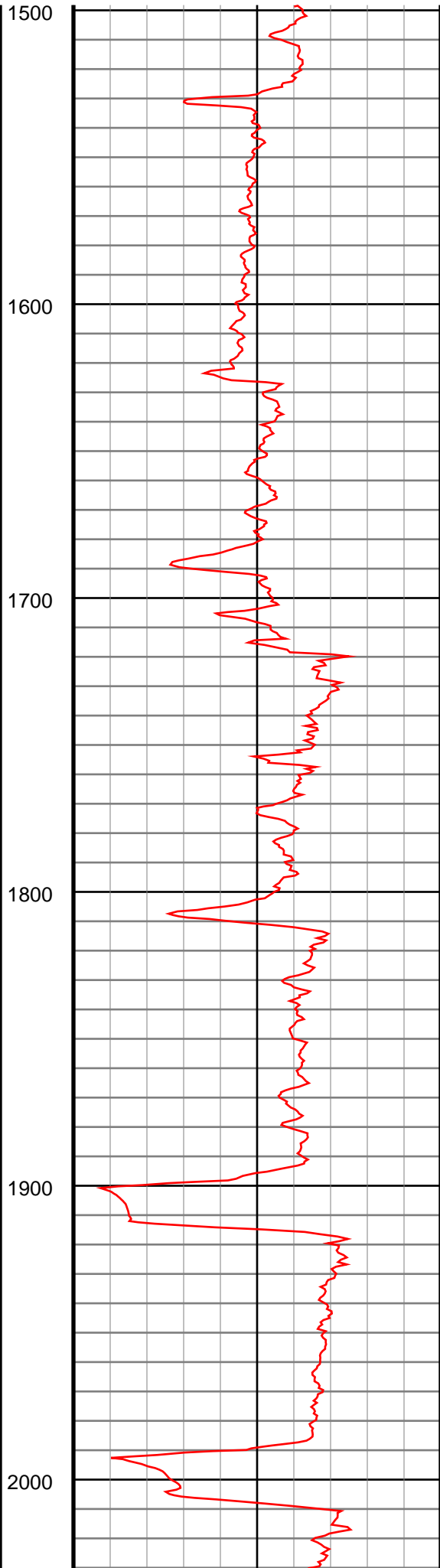
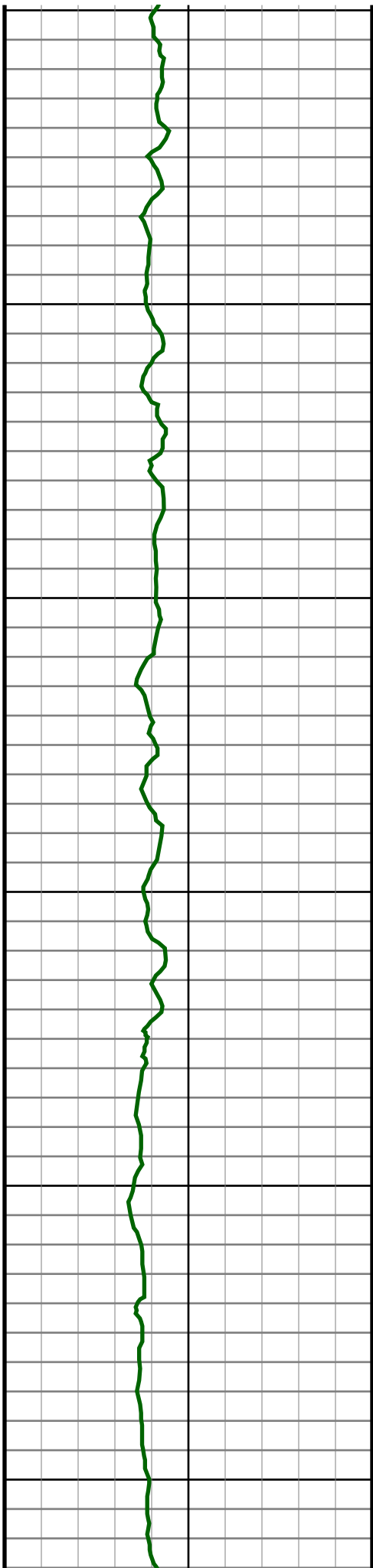
#12 MD(1113.00) Inc(0.9) Azm(318.1) TVD(1112.90)
VS(9.62) NS(10.84) EW(-8.71) TEMP(0.0)

#13 MD(1205.00) Inc(0.8) Azm(321.9) TVD(1204.89)
VS(10.54) NS(11.88) EW(-9.59) TEMP(0.0)

#14 MD(1297.00) Inc(0.8) Azm(303.7) TVD(1296.88)
VS(11.27) NS(12.75) EW(-10.52) TEMP(0.0)

#15 MD(1389.00) Inc(0.8) Azm(324.4) TVD(1388.87)
VS(12.03) NS(13.62) EW(-11.43) TEMP(0.0)

#16 MD(1481.00) Inc(0.6) Azm(304.0) TVD(1480.87)
VS(12.71) NS(14.42) EW(-12.20) TEMP(0.0)



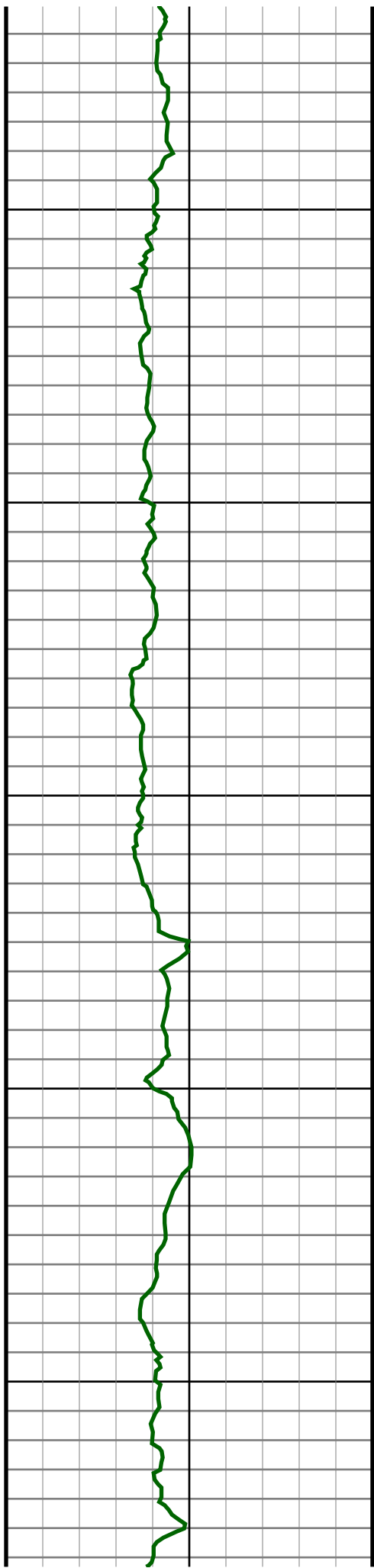
#17 MD(1574.00) Inc(0.5) Azm(286.3) TVD(1573.86)
VS(12.99) NS(14.80) EW(-13.00) TEMP(0.0)

#18 MD(1666.00) Inc(0.4) Azm(232.5) TVD(1665.86)
VS(12.83) NS(14.72) EW(-13.64) TEMP(0.0)

#19 MD(1758.00) Inc(0.4) Azm(149.9) TVD(1757.86)
VS(12.35) NS(14.25) EW(-13.73) TEMP(0.0)

#20 MD(1850.00) Inc(0.4) Azm(20.3) TVD(1849.86)
VS(12.40) NS(14.27) EW(-13.46) TEMP(0.0)

#21 MD(1942.00) Inc(1.5) Azm(133.9) TVD(1941.85)
VS(12.00) NS(13.74) EW(-12.48) TEMP(0.0)



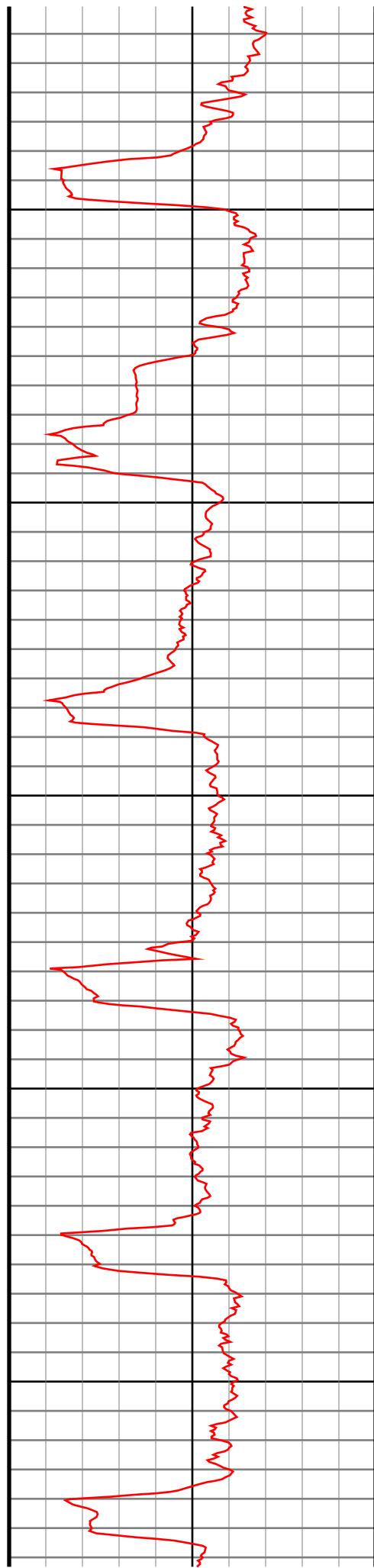
2100

2200

2300

2400

2500



#22 MD(2034.00) Inc(3.1) Azm(150.6) TVD(2033.77)
VS(9.30) NS(10.73) EW(-10.39) TEMP(0.0)

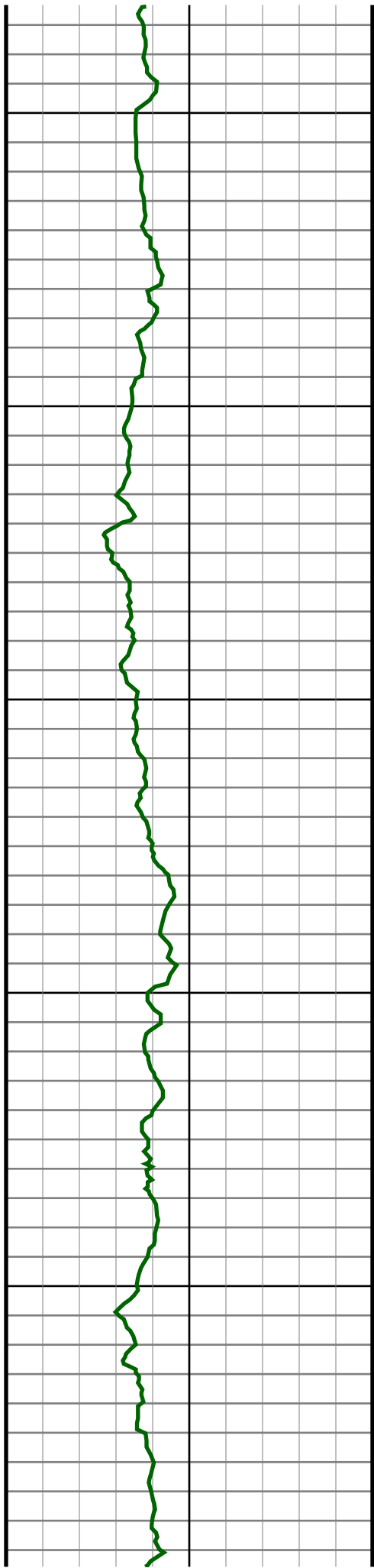
#23 MD(2126.00) Inc(5.0) Azm(134.0) TVD(2125.54)
VS(4.92) NS(5.78) EW(-6.28) TEMP(0.0)

#24 MD(2218.00) Inc(7.1) Azm(127.4) TVD(2217.02)
VS(-0.31) NS(-0.46) EW(1.12) TEMP(0.0)

#25 MD(2310.00) Inc(7.7) Azm(125.2) TVD(2308.26)
VS(-6.02) NS(-7.46) EW(10.67) TEMP(0.0)

#26 MD(2403.00) Inc(8.7) Azm(131.7) TVD(2400.31)
VS(-12.88) NS(-15.74) EW(21.01) TEMP(0.0)

#27 MD(2495.00) Inc(9.5) Azm(141.2) TVD(2491.15)
VS(-22.04) NS(-26.28) EW(30.97) TEMP(0.0)



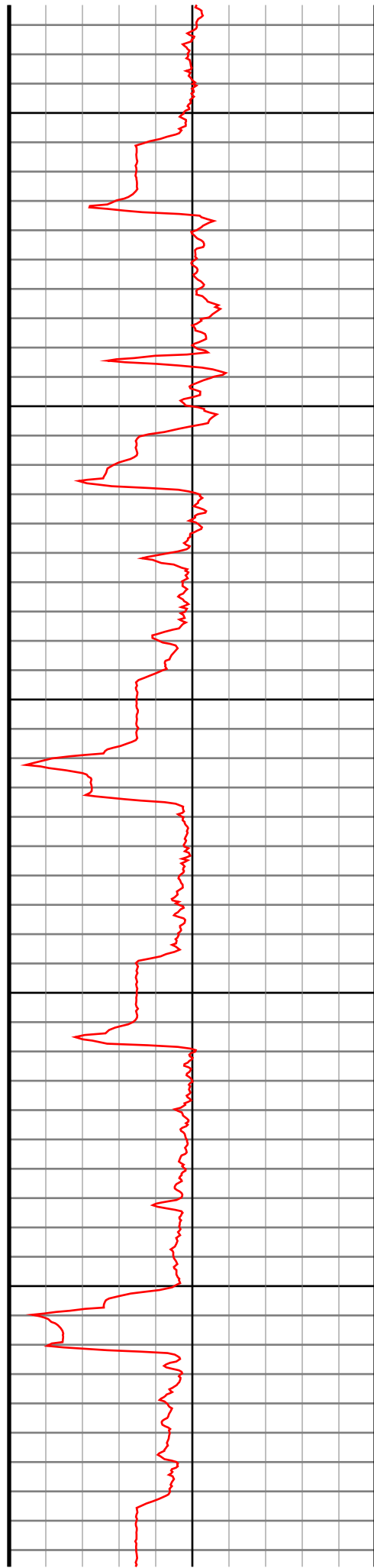
2600

2700

2800

2900

3000



#28 MD(2590.00) Inc(10.9) Azm(133.3) TVD(2584.65)
VS(-32.73) NS(-38.55) EW(42.42) TEMP(0.0)

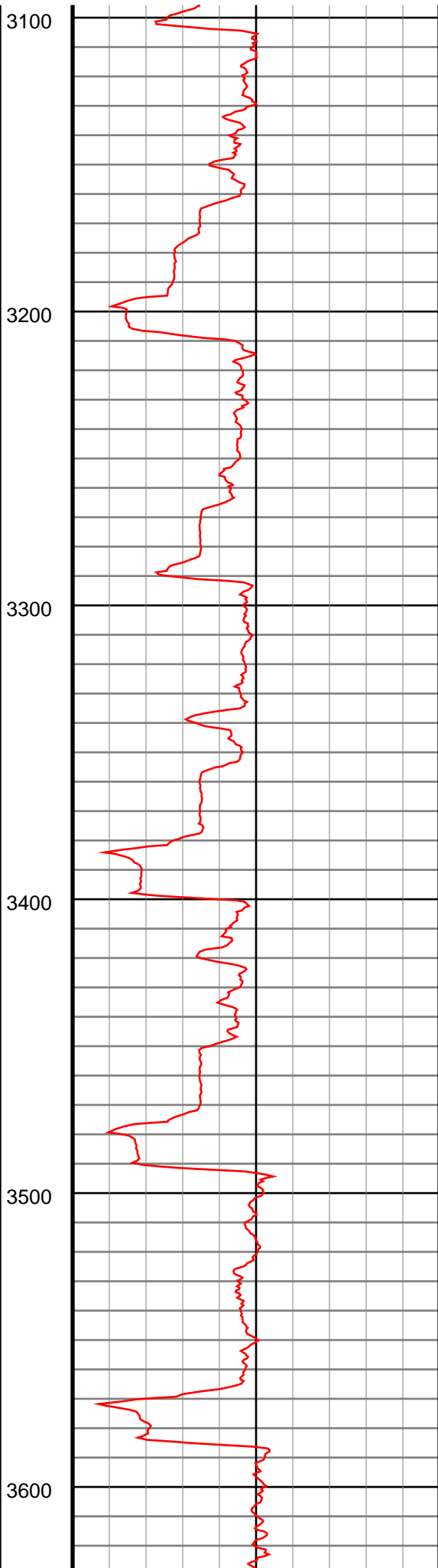
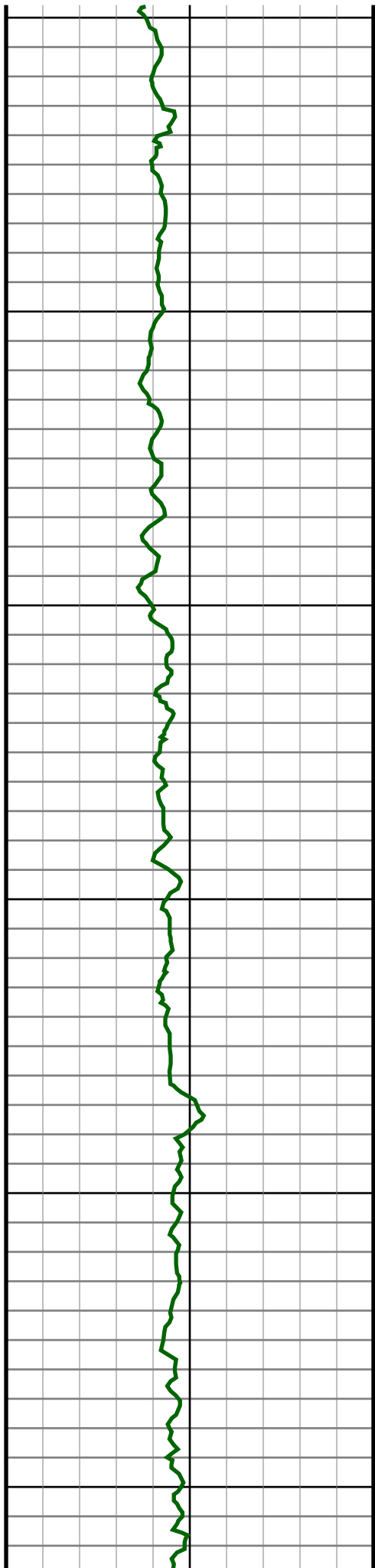
#29 MD(2685.00) Inc(10.5) Azm(129.6) TVD(2678.00)
VS(-42.59) NS(-50.23) EW(55.62) TEMP(0.0)

#30 MD(2781.00) Inc(10.6) Azm(130.3) TVD(2772.38)
VS(-52.04) NS(-61.52) EW(69.10) TEMP(0.0)

#31 MD(2876.00) Inc(10.6) Azm(136.3) TVD(2865.76)
VS(-62.26) NS(-73.49) EW(81.80) TEMP(0.0)

#32 MD(2971.00) Inc(9.9) Azm(133.5) TVD(2959.25)
VS(-72.55) NS(-85.43) EW(93.76) TEMP(0.0)

#33 MD(3066.00) Inc(10.9) Azm(136.8) TVD(3052.69)
VS(-83.05) NS(-97.59) EW(105.83) TEMP(0.0)



#34 MD(3161.00) Inc(9.8) Azm(135.8) TVD(3146.14)
VS(-93.76) NS(-109.94) EW(117.62) TEMP(0.0)

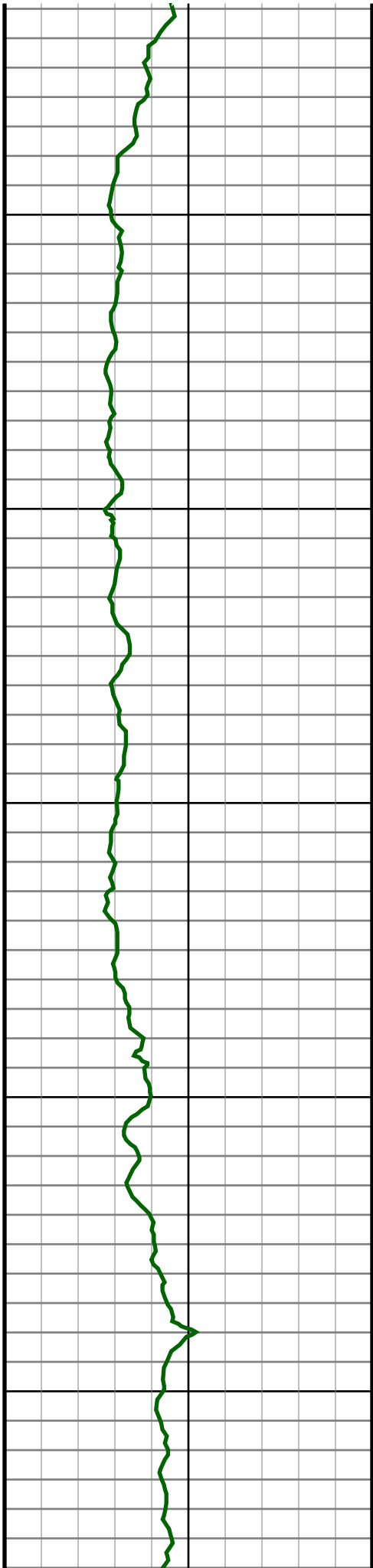
#35 MD(3257.00) Inc(10.0) Azm(139.0) TVD(3240.71)
VS(-104.36) NS(-122.09) EW(128.78) TEMP(0.0)

#36 MD(3352.00) Inc(9.1) Azm(135.6) TVD(3334.39)
VS(-114.47) NS(-133.68) EW(139.45) TEMP(0.0)

#37 MD(3447.00) Inc(9.3) Azm(142.6) TVD(3428.17)
VS(-124.55) NS(-145.15) EW(149.37) TEMP(0.0)

#38 MD(3542.00) Inc(10.0) Azm(143.5) TVD(3521.83)
VS(-135.93) NS(-157.87) EW(158.94) TEMP(0.0)

#39 MD(3637.00) Inc(10.6) Azm(143.5) TVD(3615.30)
VS(-148.16) NS(-171.53) EW(169.04) TEMP(0.0)



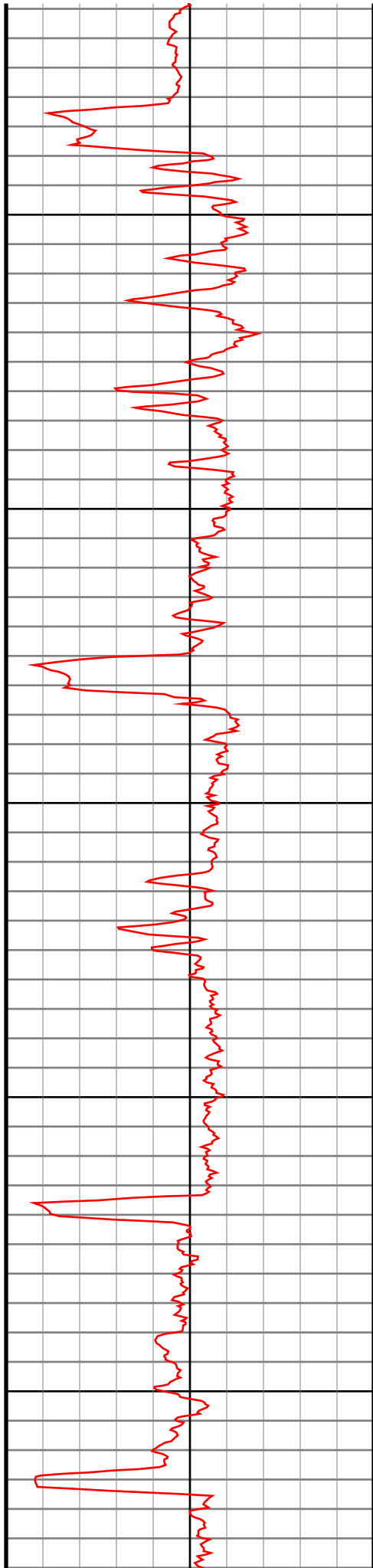
3700

3800

3900

4000

4100



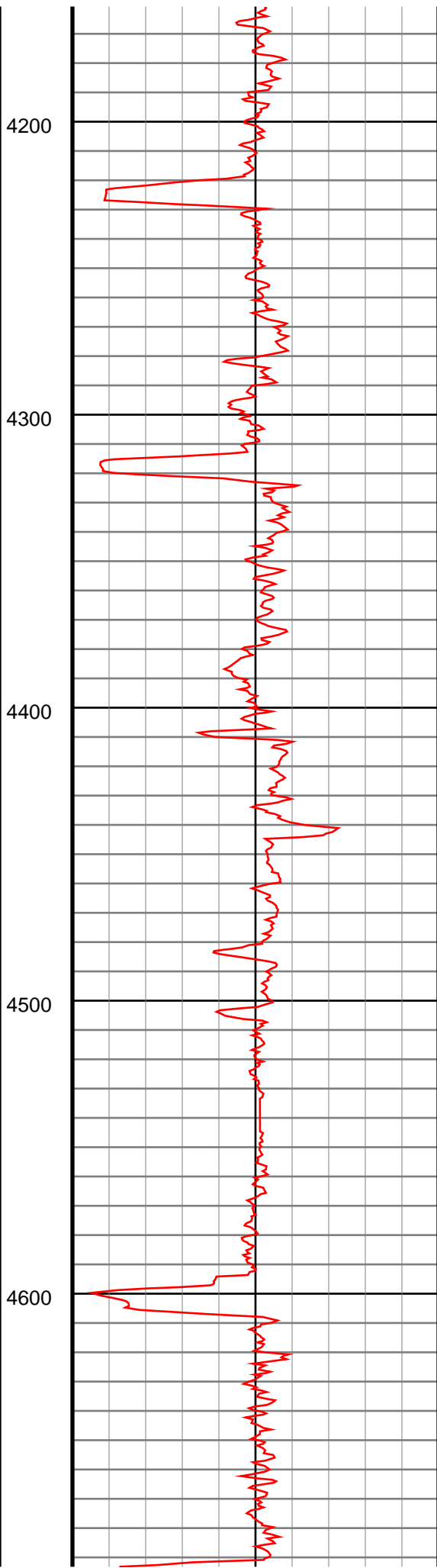
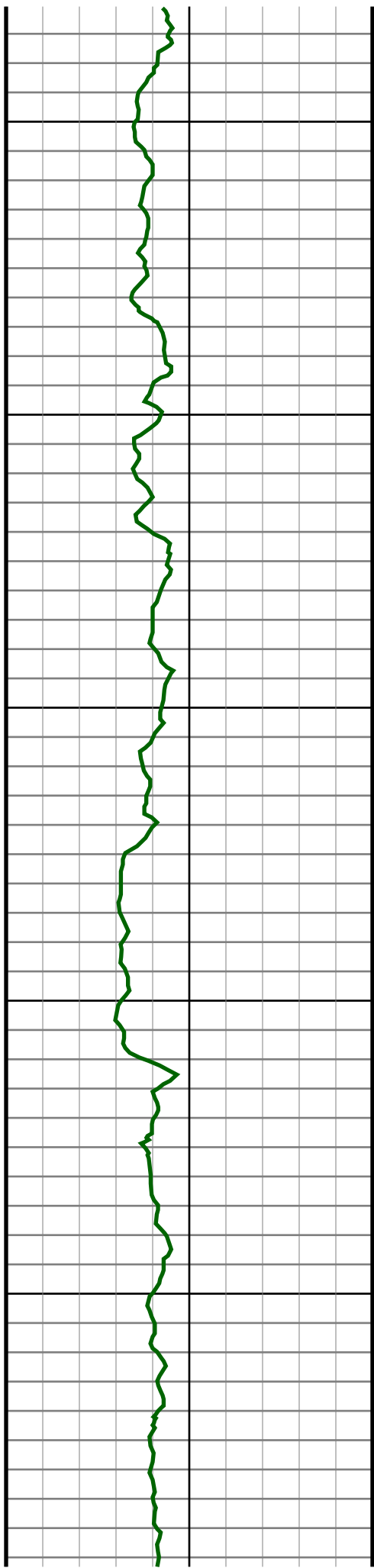
#40 MD(3733.00) Inc(13.0) Azm(144.9) TVD(3709.26)
VS(-162.48) NS(-187.46) EW(180.50) TEMP(0.0)

#41 MD(3828.00) Inc(13.5) Azm(146.5) TVD(3801.73)
VS(-178.72) NS(-205.45) EW(192.77) TEMP(0.0)

#42 MD(3923.00) Inc(14.5) Azm(141.6) TVD(3893.91)
VS(-195.38) NS(-224.02) EW(206.28) TEMP(0.0)

#43 MD(4018.00) Inc(15.0) Azm(142.5) TVD(3985.78)
VS(-212.37) NS(-243.09) EW(221.15) TEMP(0.0)

#44 MD(4113.00) Inc(13.1) Azm(140.2) TVD(4077.94)
VS(-228.38) NS(-261.12) EW(235.53) TEMP(0.0)



#45 MD(4209.00) Inc(11.4) Azm(129.6) TVD(4171.76)
VS(-240.81) NS(-275.53) EW(249.80) TEMP(0.0)

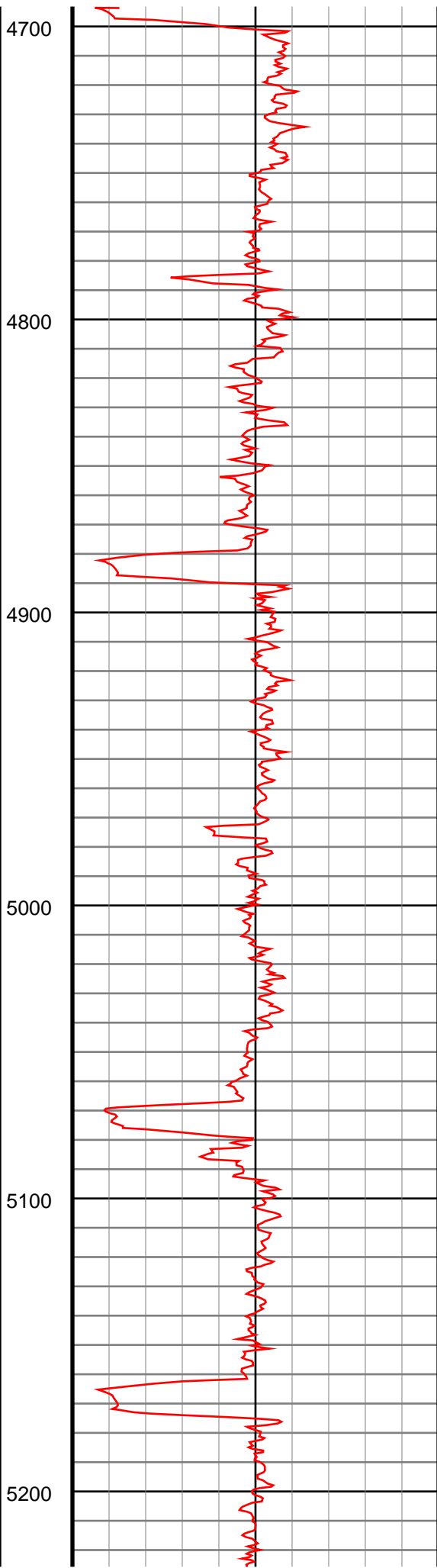
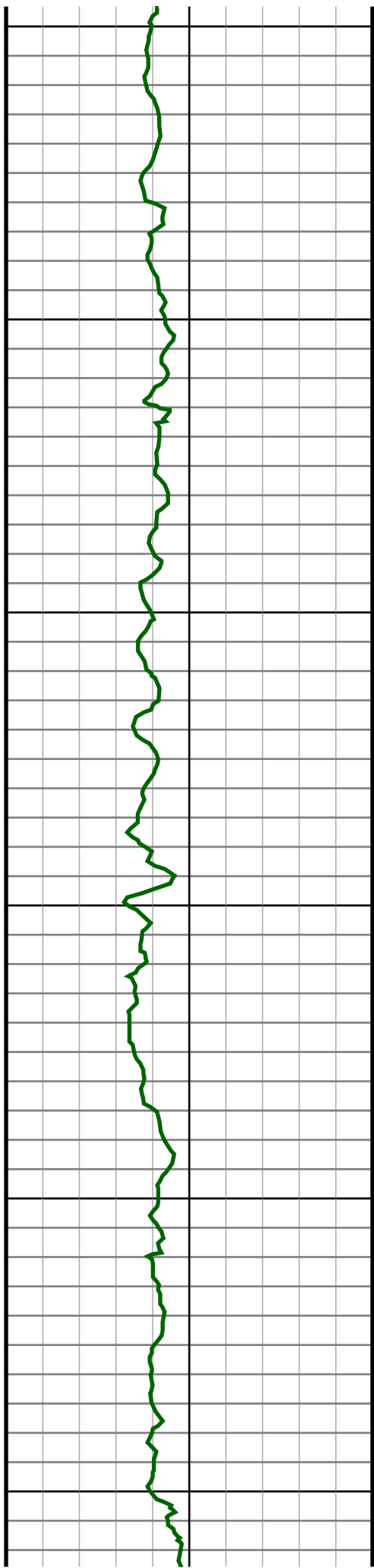
#46 MD(4304.00) Inc(10.2) Azm(132.3) TVD(4265.08)
VS(-250.62) NS(-287.18) EW(263.26) TEMP(0.0)

#47 MD(4399.00) Inc(9.4) Azm(137.9) TVD(4358.69)
VS(-260.46) NS(-298.59) EW(274.68) TEMP(0.0)

#48 MD(4494.00) Inc(8.9) Azm(138.6) TVD(4452.48)
VS(-270.33) NS(-309.86) EW(284.74) TEMP(0.0)

#49 MD(4589.00) Inc(8.3) Azm(137.4) TVD(4546.41)
VS(-279.57) NS(-320.42) EW(294.24) TEMP(0.0)

#50 MD(4684.00) Inc(8.7) Azm(132.5) TVD(4640.37)
VS(-288.09) NS(-330.32) EW(304.18) TEMP(0.0)



#51 MD(4780.00) Inc(9.7) Azm(134.0) TVD(4735.13)
VS(-297.08) NS(-340.85) EW(315.35) TEMP(0.0)

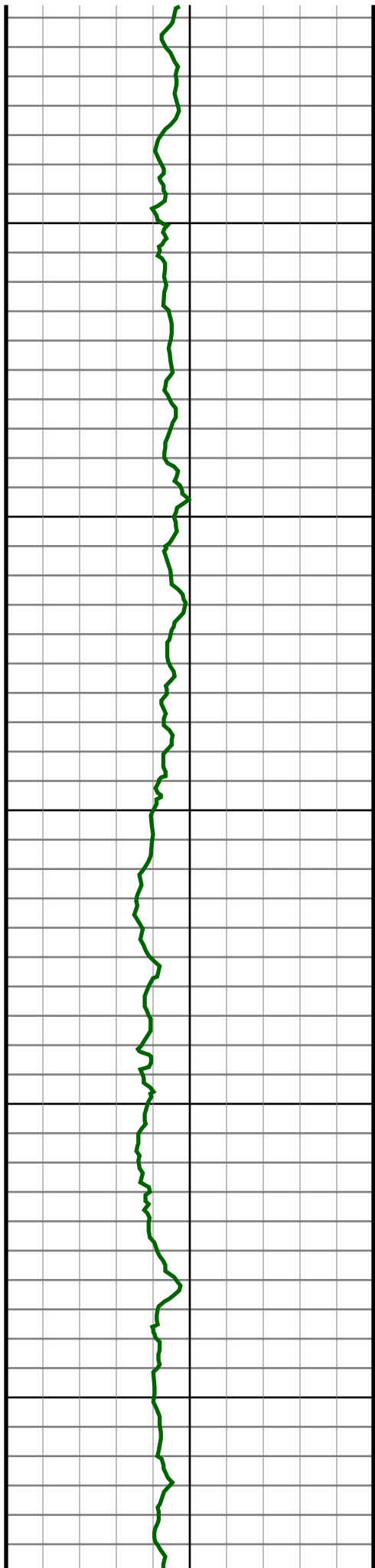
#52 MD(4875.00) Inc(8.4) Azm(133.0) TVD(4828.95)
VS(-305.88) NS(-351.14) EW(326.19) TEMP(0.0)

#53 MD(4970.00) Inc(9.3) Azm(133.2) TVD(4922.82)
VS(-314.40) NS(-361.13) EW(336.86) TEMP(0.0)

#54 MD(5065.00) Inc(8.7) Azm(131.6) TVD(5016.65)
VS(-322.92) NS(-371.15) EW(347.83) TEMP(0.0)

#55 MD(5161.00) Inc(7.2) Azm(134.7) TVD(5111.72)
VS(-330.64) NS(-380.20) EW(357.53) TEMP(0.0)

#56 MD(5256.00) Inc(6.9) Azm(139.1) TVD(5206.01)
VS(-338.03) NS(-388.71) EW(365.50) TEMP(0.0)



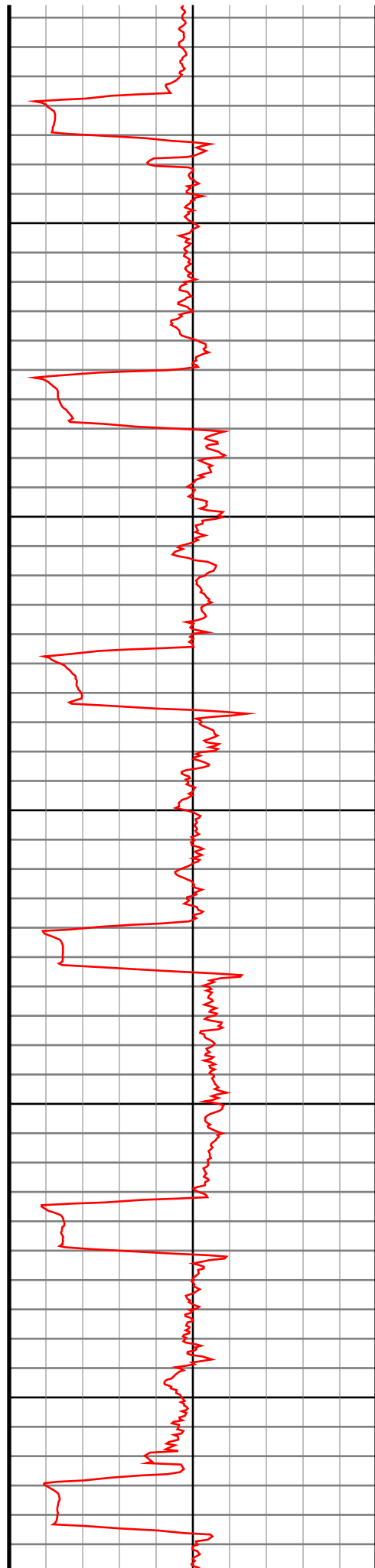
5300

5400

5500

5600

5700



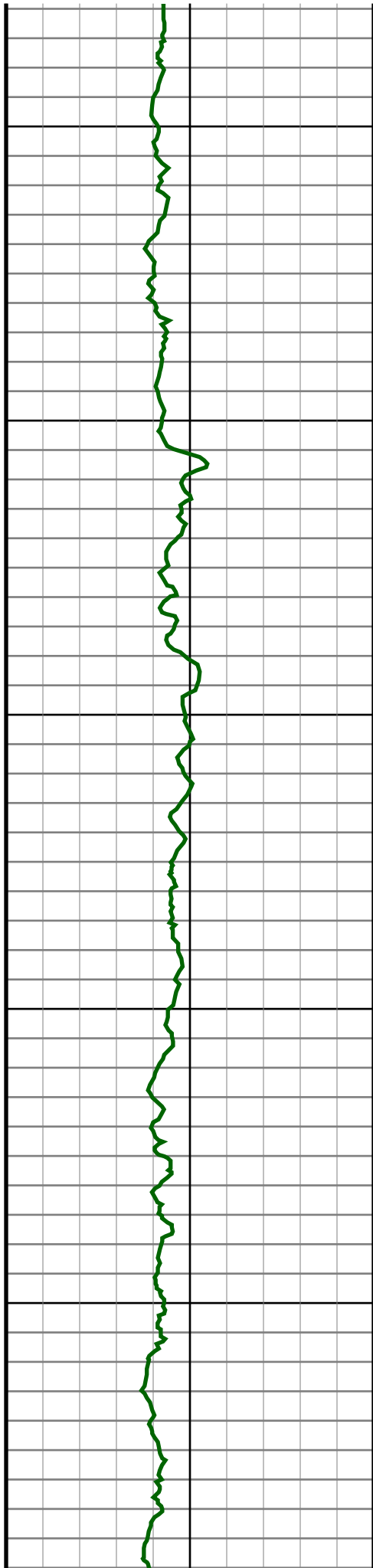
#57 MD(5351.00) Inc(7.5) Azm(136.3) TVD(5300.26)
VS(-345.71) NS(-397.50) EW(373.52) TEMP(0.0)

#58 MD(5446.00) Inc(8.1) Azm(138.1) TVD(5394.38)
VS(-353.96) NS(-406.96) EW(382.27) TEMP(0.0)

#59 MD(5541.00) Inc(8.8) Azm(135.8) TVD(5488.35)
VS(-362.83) NS(-417.16) EW(391.81) TEMP(0.0)

#60 MD(5636.00) Inc(8.7) Azm(136.7) TVD(5582.24)
VS(-371.89) NS(-427.59) EW(401.80) TEMP(0.0)

#61 MD(5731.00) Inc(9.2) Azm(138.1) TVD(5676.08)
VS(-381.38) NS(-438.48) EW(411.80) TEMP(0.0)



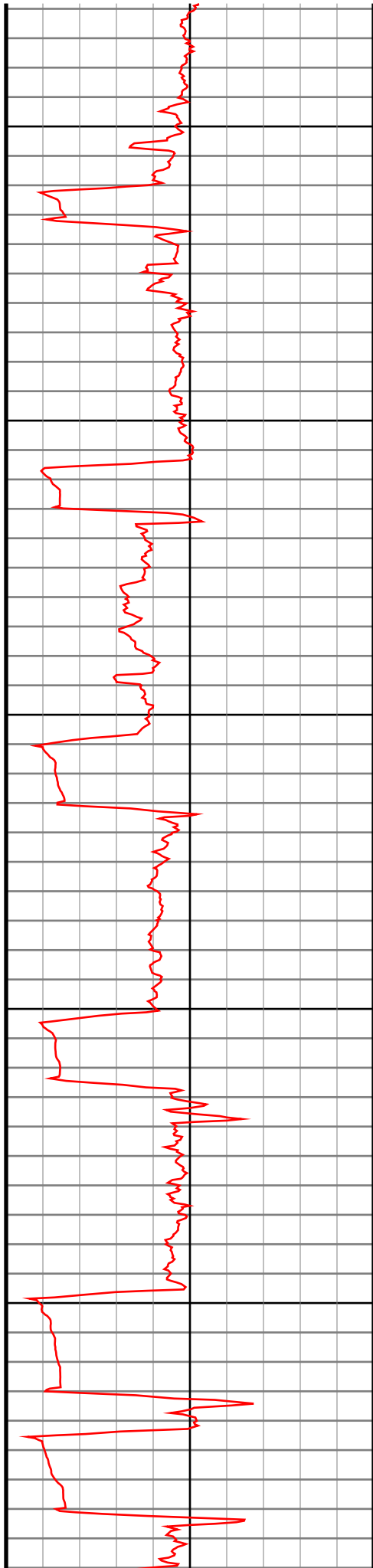
5800

5900

6000

6100

6200



#62 MD(5826.00) Inc(9.8) Azm(137.9) TVD(5769.78)
VS(-391.57) NS(-450.13) EW(422.29) TEMP(0.0)

#63 MD(5922.00) Inc(9.4) Azm(135.1) TVD(5864.44)
VS(-401.66) NS(-461.74) EW(433.31) TEMP(0.0)

#64 MD(6017.00) Inc(8.6) Azm(135.8) TVD(5958.27)
VS(-410.81) NS(-472.33) EW(443.73) TEMP(0.0)

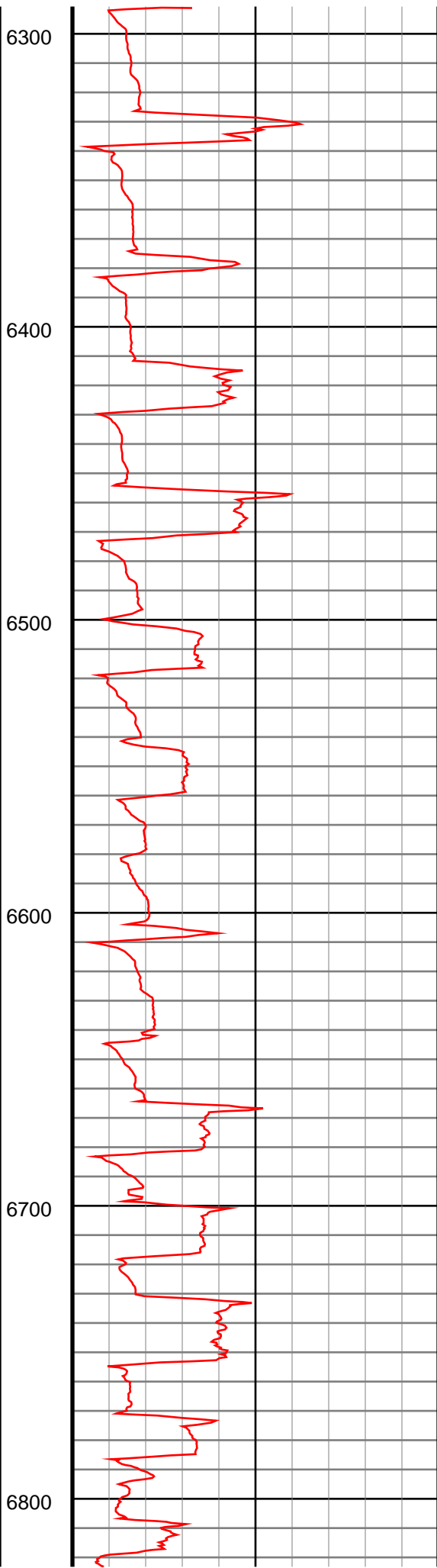
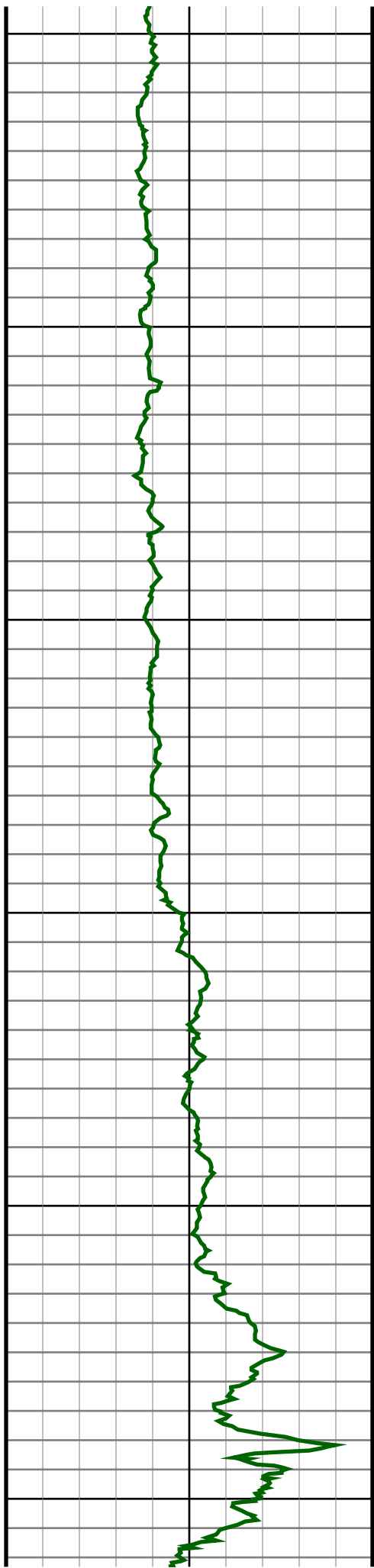
#65 MD(6112.00) Inc(9.5) Azm(136.1) TVD(6052.08)
VS(-420.11) NS(-483.07) EW(454.12) TEMP(0.0)

#66 MD(6207.00) Inc(9.4) Azm(122.1) TVD(6145.81)
VS(-428.25) NS(-492.85) EW(466.13) TEMP(0.0)

#67 MD(6255.00) Inc(7.9) Azm(115.8) TVD(6193.26)
VS(-430.92) NS(-496.36) EW(472.42) TEMP(0.0)

#68 MD(6303.00) Inc(9.6) Azm(86.6) TVD(6240.72)
VS(-431.20) NS(-497.56) EW(479.39) TEMP(0.0)

#69 MD(6351.00) Inc(12.7) Azm(70.4) TVD(6287.82)
VS(-428.05) NS(-495.55) EW(488.36) TEMP(0.0)



#70 MD(6398.00) Inc(15.5) Azm(51.4) TVD(6333.42)
VS(-421.17) NS(-489.90) EW(498.14) TEMP(0.0)

#71 MD(6446.00) Inc(18.1) Azm(32.4) TVD(6379.41)
VS(-409.79) NS(-479.59) EW(507.16) TEMP(0.0)

#72 MD(6493.00) Inc(18.5) Azm(15.0) TVD(6424.06)
VS(-395.76) NS(-466.22) EW(513.01) TEMP(0.0)

#73 MD(6541.00) Inc(20.1) Azm(5.0) TVD(6469.38)
VS(-379.97) NS(-450.64) EW(515.70) TEMP(0.0)

#74 MD(6588.00) Inc(21.1) Azm(4.1) TVD(6513.37)
VS(-363.45) NS(-434.15) EW(517.01) TEMP(0.0)

#75 MD(6636.00) Inc(22.7) Azm(6.1) TVD(6557.91)
VS(-345.57) NS(-416.33) EW(518.61) TEMP(0.0)

#76 MD(6683.00) Inc(28.0) Azm(11.5) TVD(6600.37)
VS(-325.48) NS(-396.48) EW(521.77) TEMP(0.0)

#77 MD(6731.00) Inc(35.3) Azm(12.9) TVD(6641.21)
VS(-300.40) NS(-371.89) EW(527.12) TEMP(0.0)

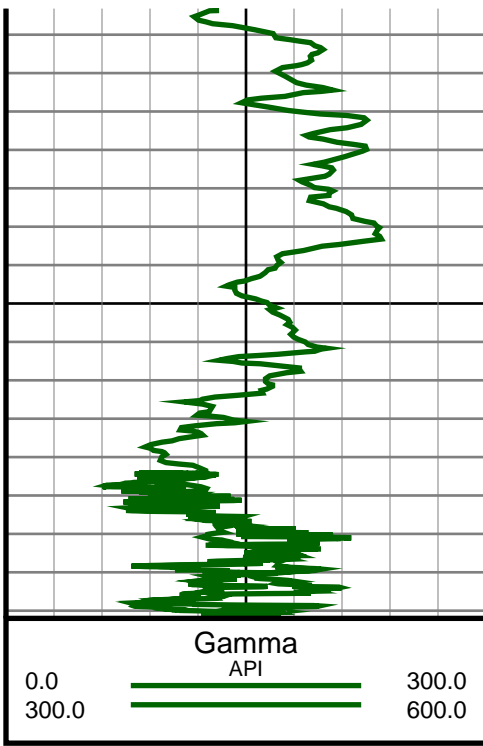
#78 MD(6778.00) Inc(39.1) Azm(12.4) TVD(6678.64)
VS(-272.11) NS(-344.16) EW(533.34) TEMP(0.0)

#79 MD(6826.00) Inc(41.9) Azm(11.0) TVD(6715.13)
VS(-241.02) NS(-313.64) EW(539.65) TEMP(0.0)

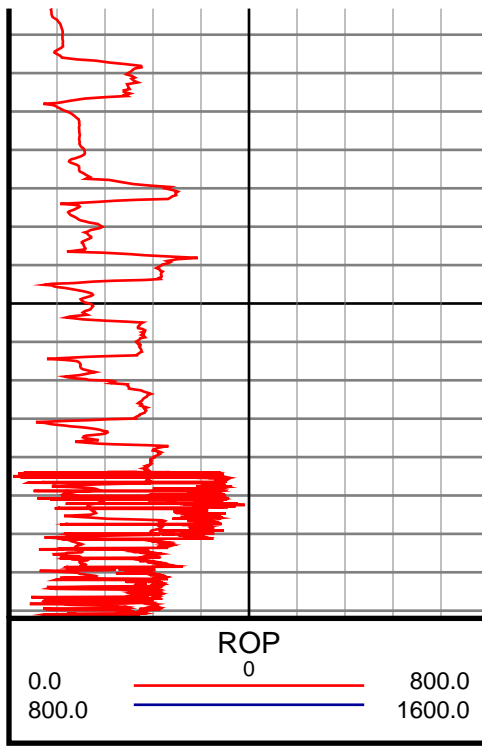
#80 MD(6873.00) Inc(43.0) Azm(10.3) TVD(6749.81)
VS(-209.35) NS(-282.47) EW(545.51) TEMP(0.0)

#81 MD(6921.00) Inc(46.5) Azm(9.2) TVD(6783.90)
VS(-175.59) NS(-249.17) EW(551.22) TEMP(0.0)

#82 MD(6969.00) Inc(49.9) Azm(6.9) TVD(6815.89)
VS(-139.82) NS(-213.74) EW(556.21) TEMP(0.0)



6900



#83 MD(7017.00) Inc(54.0) Azm(4.5) TVD(6845.47)
VS(-102.05) NS(-176.14) EW(559.94) TEMP(0.0)

#84 MD(7064.00) Inc(59.8) Azm(3.8) TVD(6871.12)
VS(-62.76) NS(-136.89) EW(562.78) TEMP(0.0)

#85 MD(7112.00) Inc(64.7) Azm(3.1) TVD(6893.47)
VS(-20.40) NS(-94.50) EW(565.33) TEMP(0.0)

#86 MD(7159.00) Inc(68.1) Azm(3.3) TVD(6912.28)
VS(22.54) NS(-51.50) EW(567.74) TEMP(0.0)

#87 MD(7207.00) Inc(69.3) Azm(3.3) TVD(6929.72)
VS(67.15) NS(-6.86) EW(570.31) TEMP(0.0)

#135 MD(11421.00) Inc(90.4) Azm(358.0) TVD(6944.27)
VS(4235.78) NS(4199.76) EW(551.20) TEMP(0.0)