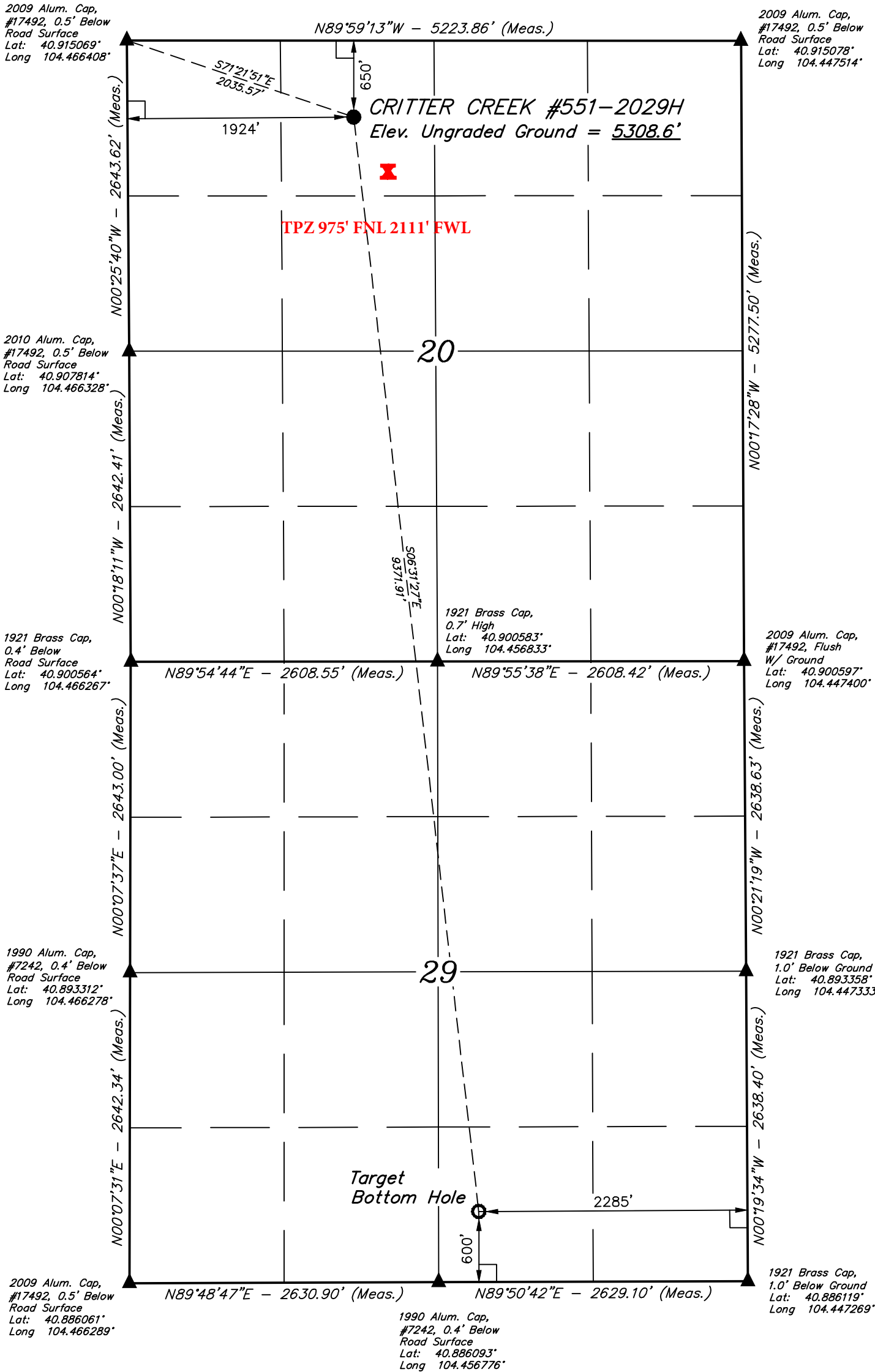


LEGEND:

- = 90° SYMBOL
- = PROPOSED WELLHEAD.
- = TARGET BOTTOM HOLE.
- = SECTION CORNERS LOCATED.

T11N, R63W, 6th P.M.



PDOP = 1.2



NAD 83 (TARGET BOTTOM HOLE)	NAD 83 (SURFACE LOCATION)
LATITUDE = 40°53'15.87" (40.887742)	LATITUDE = 40°54'47.84" (40.913289)
LONGITUDE = 104°27'19.97" (104.455547)	LONGITUDE = 104°27'33.95" (104.459431)
NAD 27 (TARGET BOTTOM HOLE)	NAD 27 (SURFACE LOCATION)
LATITUDE = 40°53'15.94" (40.887761)	LATITUDE = 40°54'47.91" (40.913308)
LONGITUDE = 104°27'18.12" (104.455033)	LONGITUDE = 104°27'32.10" (104.458917)
STATE PLANE NAD 83 (CO NORTH)	STATE PLANE NAD 83 (CO NORTH)
N: 1567955.86 E: 3288791.53	N: 1577250.61 E: 3287608.65
STATE PLANE NAD 83 (CO NORTH)	STATE PLANE NAD 83 (CO NORTH)
N: 567954.12 E: 2288940.93	N: 577248.68 E: 2287758.10

BASIS OF BEARINGS

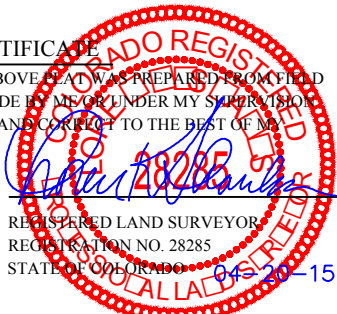
BASIS OF BEARINGS IS A G.P.S. OBSERVATION

BASIS OF ELEVATION

SPOT ELEVATION LOCATED AT THE NORTHEAST CORNER OF SECTION 1, T11N, R63W, 6th P.M. TAKEN FROM THE HERFORD, QUADRANGLE, COLORADO, WELD COUNTY, 7.5 MINUTE QUAD (TOPOGRAPHIC MAP) PUBLISHED BY THE UNITED STATES DEPARTMENT OF THE INTERIOR, GEOLOGICAL SURVEY. SAID ELEVATION IS MARKED AS BEING 5352 FEET.

CERTIFICATE

THIS IS TO CERTIFY THAT THE ABOVE PLAT WAS PREPARED FROM FIELD NOTES OF ACTUAL SURVEYS MADE BY ME OR UNDER MY SUPERVISION, AND THAT THE SAME ARE TRUE AND CORRECT TO THE BEST OF MY KNOWLEDGE AND BELIEF.



REGISTERED LAND SURVEYOR
REGISTRATION NO. 28285
STATE OF COLORADO
04-30-15

EOG RESOURCES, INC.

CRITTER CREEK #551-2029H
NE 1/4 NW 1/4, SECTION 20, T11N, R63W, 6th P.M.
WELD COUNTY, COLORADO

SURVEYED BY: GREG WEIMER, C.J.	DATE: 03-26-15
DRAWN BY: J.M.C.	DATE DRAWN: 04-03-15
SCALE: 1" = 1000'	REVISED: 00-00-00

WELL LOCATION PLAT



UELS, LLC
Corporate Office * 85 South 200 East
Vernal, UT 84078 * (435) 789-1017

