

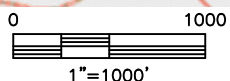
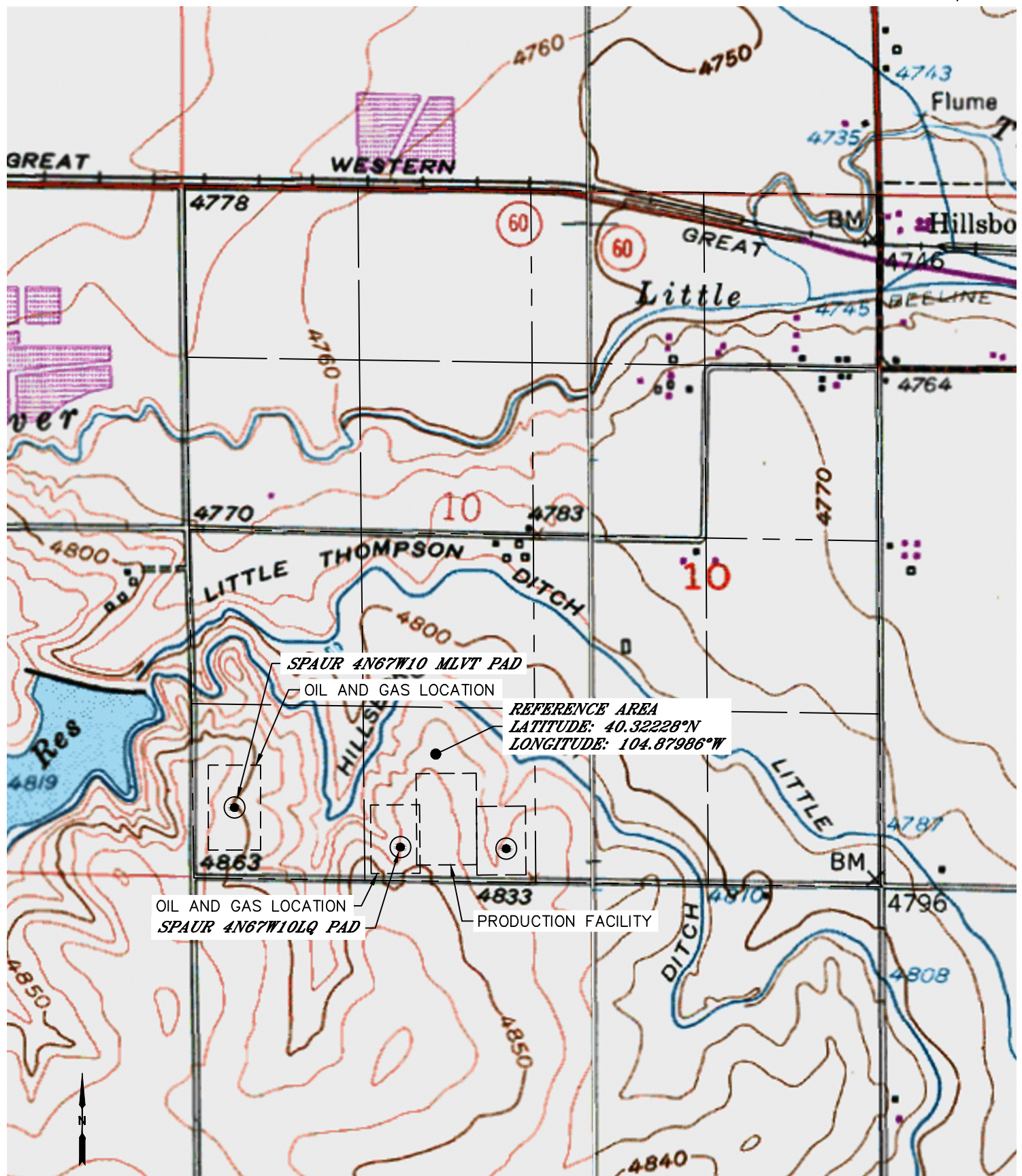


Lat40°, Inc. 6250 W. 10th St, Unit 2 Greeley, CO 970-515-5294

REFERENCE AREA MAP

SPAUR 4N67W10LQ PAD & MLVT PAD

SECTION: 10
TOWNSHIP: 4N
RANGE: 67W
6TH P.M.
WELD COUNTY, CO





Lat40°, Inc. 6250 W. 10th St, Unit 2 Greeley, CO 970-515-5294

REFERENCE AREA PICTURES

SPAUR 4N67W10LQ PAD & MLVT PAD

SECTION: 10
TOWNSHIP: 4N
RANGE: 67W
6TH P.M.
WELD COUNTY, CO
DATE: 9/11/2014



VIEW NORTH



VIEW WEST



VIEW EAST



VIEW SOUTH