

BONANZA CREEK ENERGY INC.

WELD COUNTY, COLORADO (NAD 83)

NW NW SEC. 22 T5N R61W 6th P.M.

PRONGHORN A-E-22HNB

ORIGINAL WELLBORE

16 September, 2014

Plan: PROPOSAL #1





Project: WELD COUNTY, COLORADO (NAD 83)
Site: NW NW SEC. 22 T5N R61W 6th P.M.
Well: PRONGHORN A-E-22HNB
Wellbore: ORIGINAL WELLBORE
Design: PROPOSAL #1

ANNOTATIONS

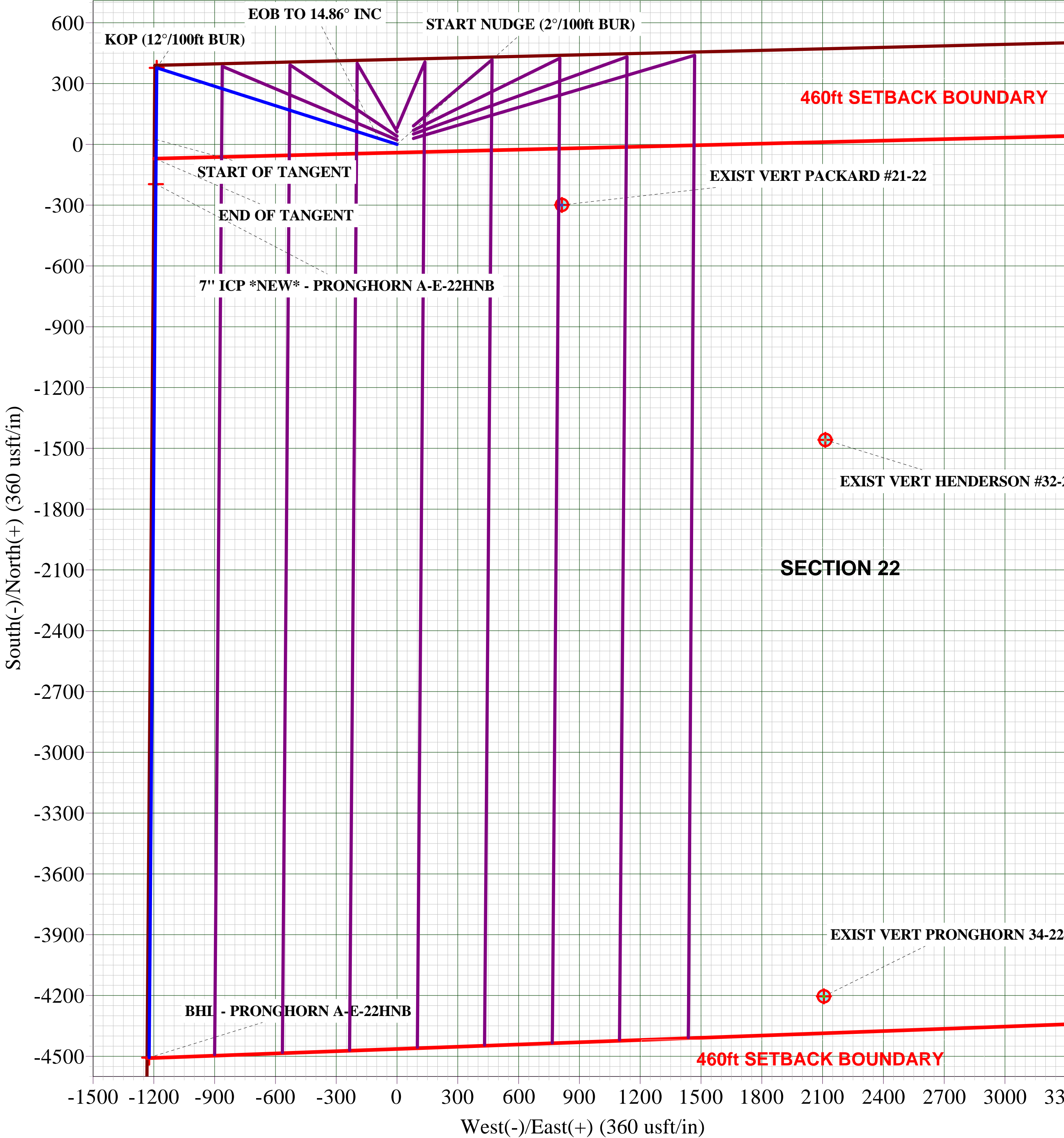
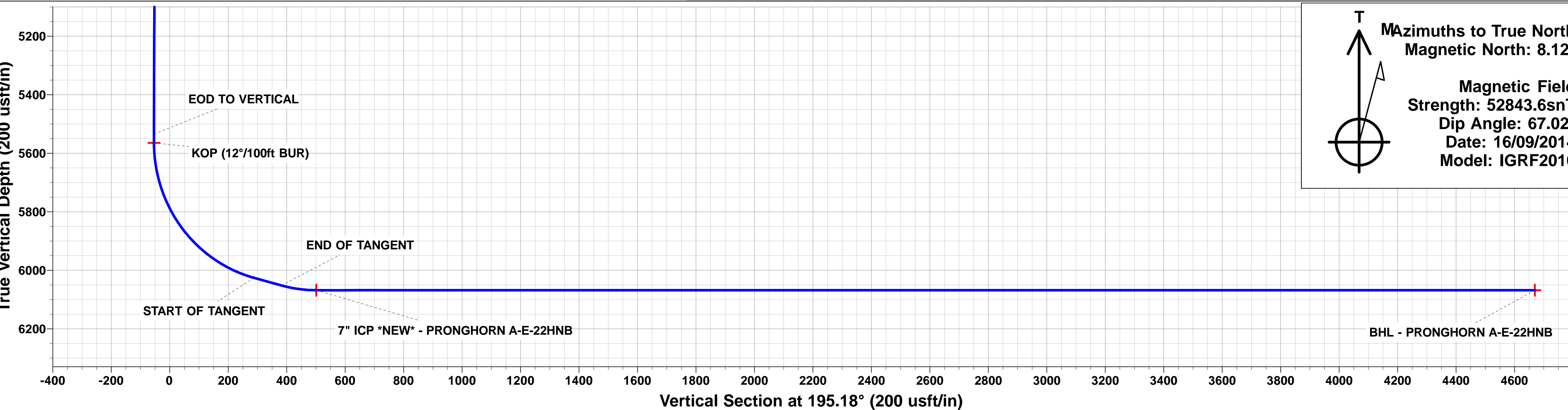
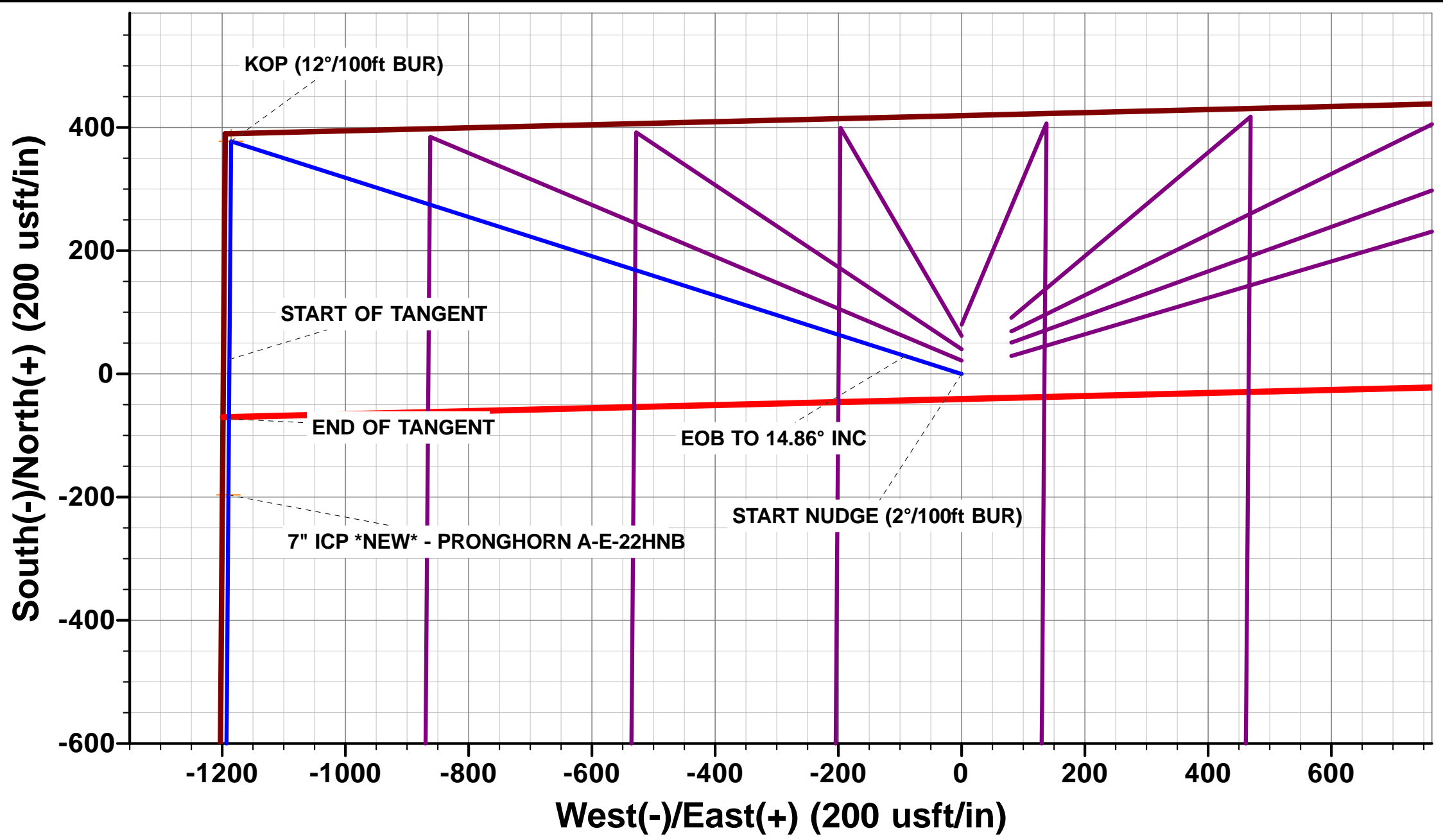
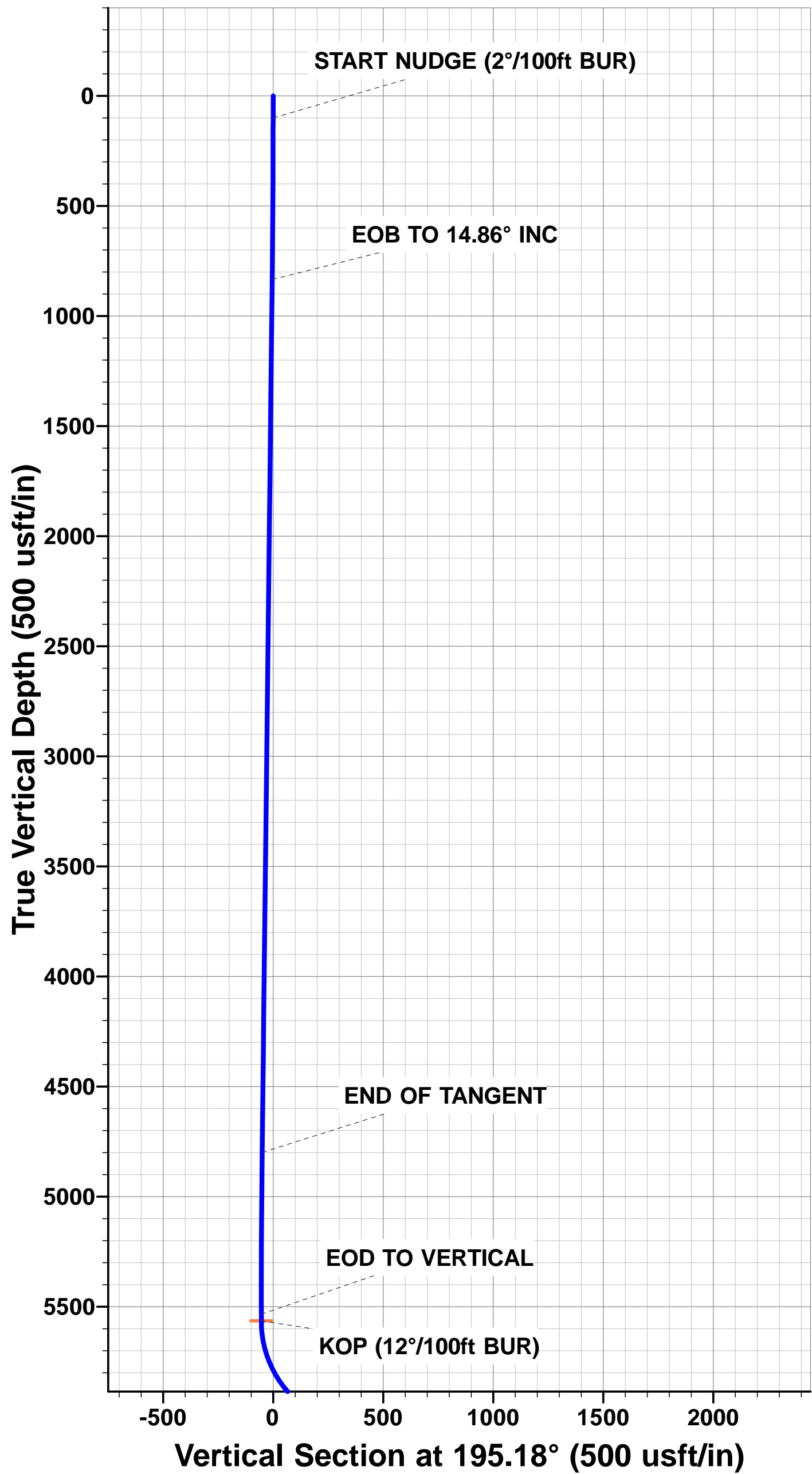
TVD	MD	Inc	Azi	+N/-S	+E/-W	VSec	Dep	Annotation
100.0	100.0	0.00	0.00	0.0	0.0	0.0	0.0	START NUDGE (2°/100ft BUR)
834.9	843.2	14.86	287.67	29.1	-91.3	-4.2	95.9	EOB TO 14.86° INC
4799.8	4945.4	14.86	287.67	348.5	-1094.1	-49.8	1148.2	END OF TANGENT
5534.7	5688.6	0.00	0.00	377.6	-1185.4	-53.9	1244.1	EOD TO VERTICAL
5564.7	5718.6	0.00	0.00	377.6	-1185.4	-53.9	1244.1	KOP (12°/100ft BUR)
6025.9	6343.6	75.00	180.44	23.7	-1188.1	288.3	1598.0	START OF TANGENT
6051.8	6443.6	75.00	180.44	-72.9	-1188.9	381.7	1694.6	END OF TANGENT
6068.0	6568.6	90.00	180.44	-196.4	-1189.8	501.2	1818.1	7" ICP *NEW* - PRONGHORN A-E-22HNB
6068.0	10878.8	90.00	180.44	-4506.5	-1223.1	4669.5	6128.3	BHL - PRONGHORN A-E-22HNB

LOCAL COORDINATES:

SHL: 419ft FNL & 1198ft FWL Sec 22
7" ICP *NEW*: ft 589ft FNL & 10ft FWL Sec 22
BHL: 470ft FSL & 10ft FWL Sec 22

WELLBORE TARGET DETAILS (LAT/LONG)

Name	TVD	+N/-S	+E/-W	Latitude	Longitude
KOP - PRONGHORN A-E-22HNB	5564.7	377.6	-1185.4	40.393546	-104.204396
BHL - PRONGHORN A-E-22HNB	6068.0	-4506.5	-1223.1	40.380140	-104.204530
7" ICP *NEW* - PRONGHORN A-E-22HNB	6068.0	-196.4	-1189.8	40.391971	-104.204411



Planning Report



Database:	EDM 5000.1 Single User Db	Local Co-ordinate Reference:	Well PRONGHORN A-E-22HNB
Company:	BONANZA CREEK ENERGY INC.	TVD Reference:	KB-EST @ 4678.0usft (Original Well Elev)
Project:	WELD COUNTY, COLORADO (NAD 83)	MD Reference:	KB-EST @ 4678.0usft (Original Well Elev)
Site:	NW NW SEC. 22 T5N R61W 6th P.M.	North Reference:	True
Well:	PRONGHORN A-E-22HNB	Survey Calculation Method:	Minimum Curvature
Wellbore:	ORIGINAL WELLBORE		
Design:	PROPOSAL #1		

Project	WELD COUNTY, COLORADO (NAD 83)		
Map System:	US State Plane 1983	System Datum:	Mean Sea Level
Geo Datum:	North American Datum 1983		
Map Zone:	Colorado Northern Zone		Using geodetic scale factor

Site	NW NW SEC. 22 T5N R61W 6th P.M.		
Site Position:		Northing:	1,388,515.79 usft
From:	Lat/Long	Easting:	3,362,131.84 usft
Position Uncertainty:	0.0 usft	Slot Radius:	1.10000ft
		Latitude:	40.392590
		Longitude:	-104.199850
		Grid Convergence:	0.84 °

Well	PRONGHORN A-E-22HNB		
Well Position	+N/-S	-29.2 usft	Northing:
	+E/-W	-80.8 usft	Easting:
Position Uncertainty	0.0 usft		Wellhead Elevation:
			Latitude:
			Longitude:
			Ground Level:

Wellbore	ORIGINAL WELLBORE				
Magnetics	Model Name	Sample Date	Declination (°)	Dip Angle (°)	Field Strength (nT)
	IGRF2010	16/09/2014	8.12	67.02	52,844

Design	PROPOSAL #1			
Audit Notes:				
Version:	Phase:	PROTOTYPE	Tie On Depth:	0.0
Vertical Section:	Depth From (TVD) (usft)	+N/-S (usft)	+E/-W (usft)	Direction (°)
	6,068.0	0.0	0.0	195.18

Plan Sections											
MD (usft)	Inc (°)	Azi (°)	Vertical Depth	SS (usft)	+N/-S (usft)	+E/-W (usft)	Dogleg Rate (°/100usft)	Build Rate (°/100usft)	Turn Rate (°/100usft)	TFO (°)	Target
0.0	0.00	0.00	0.0	-4,678.0	0.0	0.0	0.00	0.00	0.00	0.00	
100.0	0.00	0.00	100.0	-4,578.0	0.0	0.0	0.00	0.00	0.00	0.00	
843.2	14.86	287.67	834.9	-3,843.1	29.1	-91.3	2.00	2.00	0.00	287.67	
4,945.4	14.86	287.67	4,799.8	121.8	348.5	-1,094.1	0.00	0.00	0.00	0.00	
5,688.6	0.00	0.00	5,534.7	856.7	377.6	-1,185.4	2.00	-2.00	0.00	180.00	
5,718.6	0.00	0.00	5,564.7	886.7	377.6	-1,185.4	0.00	0.00	0.00	0.00	KOP - PRONGHOF
6,343.6	75.00	180.44	6,025.9	1,347.9	23.7	-1,188.1	12.00	12.00	0.00	180.44	
6,443.6	75.00	180.44	6,051.8	1,373.8	-72.9	-1,188.9	0.00	0.00	0.00	0.00	
6,568.6	90.00	180.44	6,068.0	1,390.0	-196.4	-1,189.8	12.00	12.00	0.00	0.00	
10,878.8	90.00	180.44	6,068.0	1,390.0	-4,506.5	-1,223.1	0.00	0.00	0.00	73.71	BHL - PRONGHOR

Planning Report



Database:	EDM 5000.1 Single User Db	Local Co-ordinate Reference:	Well PRONGHORN A-E-22HNB
Company:	BONANZA CREEK ENERGY INC.	TVD Reference:	KB-EST @ 4678.0usft (Original Well Elev)
Project:	WELD COUNTY, COLORADO (NAD 83)	MD Reference:	KB-EST @ 4678.0usft (Original Well Elev)
Site:	NW NW SEC. 22 T5N R61W 6th P.M.	North Reference:	True
Well:	PRONGHORN A-E-22HNB	Survey Calculation Method:	Minimum Curvature
Wellbore:	ORIGINAL WELLBORE		
Design:	PROPOSAL #1		

Planned Survey										
MD (usft)	Inc (°)	Azi (°)	TVD (usft)	SS (usft)	+N/-S (usft)	+E/-W (usft)	Vertical Section (usft)	Dogleg Rate (°/100usft)	Build Rate (°/100usft)	Turn Rate (°/100usft)
0.0	0.00	0.00	0.0	4,678.00	0.0	0.0	0.0	0.00	0.00	0.00
START NUDGE (2°/100ft BUR)										
100.0	0.00	0.00	100.0	4,578.00	0.0	0.0	0.0	0.00	0.00	0.00
200.0	2.00	287.67	200.0	4,478.02	0.5	-1.7	-0.1	2.00	2.00	0.00
300.0	4.00	287.67	299.8	4,378.16	2.1	-6.6	-0.3	2.00	2.00	0.00
400.0	6.00	287.67	399.5	4,278.55	4.8	-15.0	-0.7	2.00	2.00	0.00
500.0	8.00	287.67	498.7	4,179.30	8.5	-26.6	-1.2	2.00	2.00	0.00
600.0	10.00	287.67	597.5	4,080.53	13.2	-41.5	-1.9	2.00	2.00	0.00
700.0	12.00	287.67	695.6	3,982.38	19.0	-59.6	-2.7	2.00	2.00	0.00
800.0	14.00	287.67	793.1	3,884.94	25.8	-81.1	-3.7	2.00	2.00	0.00
EOB TO 14.86° INC										
843.2	14.86	287.67	834.9	3,843.08	29.1	-91.3	-4.2	2.00	2.00	0.00
900.0	14.86	287.67	889.8	3,788.21	33.5	-105.2	-4.8	0.00	0.00	0.00
1,000.0	14.86	287.67	986.4	3,691.56	41.3	-129.7	-5.9	0.00	0.00	0.00
1,100.0	14.86	287.67	1,083.1	3,594.90	49.1	-154.1	-7.0	0.00	0.00	0.00
1,200.0	14.86	287.67	1,179.8	3,498.25	56.9	-178.6	-8.1	0.00	0.00	0.00
1,300.0	14.86	287.67	1,276.4	3,401.60	64.7	-203.0	-9.2	0.00	0.00	0.00
1,400.0	14.86	287.67	1,373.1	3,304.94	72.4	-227.4	-10.3	0.00	0.00	0.00
1,500.0	14.86	287.67	1,469.7	3,208.29	80.2	-251.9	-11.5	0.00	0.00	0.00
1,600.0	14.86	287.67	1,566.4	3,111.63	88.0	-276.3	-12.6	0.00	0.00	0.00
1,700.0	14.86	287.67	1,663.0	3,014.98	95.8	-300.8	-13.7	0.00	0.00	0.00
1,800.0	14.86	287.67	1,759.7	2,918.33	103.6	-325.2	-14.8	0.00	0.00	0.00
1,900.0	14.86	287.67	1,856.3	2,821.67	111.4	-349.7	-15.9	0.00	0.00	0.00
2,000.0	14.86	287.67	1,953.0	2,725.02	119.2	-374.1	-17.0	0.00	0.00	0.00
2,100.0	14.86	287.67	2,049.6	2,628.37	127.0	-398.5	-18.1	0.00	0.00	0.00
2,200.0	14.86	287.67	2,146.3	2,531.71	134.7	-423.0	-19.2	0.00	0.00	0.00
2,300.0	14.86	287.67	2,242.9	2,435.06	142.5	-447.4	-20.4	0.00	0.00	0.00
2,400.0	14.86	287.67	2,339.6	2,338.41	150.3	-471.9	-21.5	0.00	0.00	0.00
2,500.0	14.86	287.67	2,436.2	2,241.75	158.1	-496.3	-22.6	0.00	0.00	0.00
2,600.0	14.86	287.67	2,532.9	2,145.10	165.9	-520.8	-23.7	0.00	0.00	0.00
2,700.0	14.86	287.67	2,629.6	2,048.45	173.7	-545.2	-24.8	0.00	0.00	0.00
2,800.0	14.86	287.67	2,726.2	1,951.79	181.5	-569.7	-25.9	0.00	0.00	0.00
2,900.0	14.86	287.67	2,822.9	1,855.14	189.2	-594.1	-27.0	0.00	0.00	0.00
3,000.0	14.86	287.67	2,919.5	1,758.49	197.0	-618.5	-28.1	0.00	0.00	0.00
3,100.0	14.86	287.67	3,016.2	1,661.83	204.8	-643.0	-29.3	0.00	0.00	0.00
3,200.0	14.86	287.67	3,112.8	1,565.18	212.6	-667.4	-30.4	0.00	0.00	0.00
3,300.0	14.86	287.67	3,209.5	1,468.53	220.4	-691.9	-31.5	0.00	0.00	0.00
3,400.0	14.86	287.67	3,306.1	1,371.87	228.2	-716.3	-32.6	0.00	0.00	0.00
3,500.0	14.86	287.67	3,402.8	1,275.22	236.0	-740.8	-33.7	0.00	0.00	0.00
3,600.0	14.86	287.67	3,499.4	1,178.57	243.7	-765.2	-34.8	0.00	0.00	0.00
3,700.0	14.86	287.67	3,596.1	1,081.91	251.5	-789.6	-35.9	0.00	0.00	0.00
3,800.0	14.86	287.67	3,692.7	985.26	259.3	-814.1	-37.0	0.00	0.00	0.00
3,900.0	14.86	287.67	3,789.4	888.61	267.1	-838.5	-38.1	0.00	0.00	0.00
4,000.0	14.86	287.67	3,886.0	791.95	274.9	-863.0	-39.3	0.00	0.00	0.00
4,100.0	14.86	287.67	3,982.7	695.30	282.7	-887.4	-40.4	0.00	0.00	0.00
4,200.0	14.86	287.67	4,079.4	598.64	290.5	-911.9	-41.5	0.00	0.00	0.00
4,300.0	14.86	287.67	4,176.0	501.99	298.3	-936.3	-42.6	0.00	0.00	0.00
4,400.0	14.86	287.67	4,272.7	405.34	306.0	-960.7	-43.7	0.00	0.00	0.00
4,500.0	14.86	287.67	4,369.3	308.68	313.8	-985.2	-44.8	0.00	0.00	0.00
4,600.0	14.86	287.67	4,466.0	212.03	321.6	-1,009.6	-45.9	0.00	0.00	0.00
4,700.0	14.86	287.67	4,562.6	115.38	329.4	-1,034.1	-47.0	0.00	0.00	0.00
4,800.0	14.86	287.67	4,659.3	18.72	337.2	-1,058.5	-48.2	0.00	0.00	0.00
4,900.0	14.86	287.67	4,755.9	-77.93	345.0	-1,083.0	-49.3	0.00	0.00	0.00

Planning Report



Database:	EDM 5000.1 Single User Db	Local Co-ordinate Reference:	Well PRONGHORN A-E-22HNB
Company:	BONANZA CREEK ENERGY INC.	TVD Reference:	KB-EST @ 4678.0usft (Original Well Elev)
Project:	WELD COUNTY, COLORADO (NAD 83)	MD Reference:	KB-EST @ 4678.0usft (Original Well Elev)
Site:	NW NW SEC. 22 T5N R61W 6th P.M.	North Reference:	True
Well:	PRONGHORN A-E-22HNB	Survey Calculation Method:	Minimum Curvature
Wellbore:	ORIGINAL WELLBORE		
Design:	PROPOSAL #1		

Planned Survey

MD (usft)	Inc (°)	Azi (°)	TVD (usft)	SS (usft)	+N/-S (usft)	+E/-W (usft)	Vertical Section (usft)	Dogleg Rate (°/100usft)	Build Rate (°/100usft)	Turn Rate (°/100usft)
END OF TANGENT										
4,945.4	14.86	287.67	4,799.8	-121.78	348.5	-1,094.1	-49.8	0.00	0.00	0.00
5,000.0	13.77	287.67	4,852.7	-174.71	352.6	-1,106.9	-50.4	2.00	-2.00	0.00
5,100.0	11.77	287.67	4,950.2	-272.23	359.3	-1,128.0	-51.3	2.00	-2.00	0.00
5,200.0	9.77	287.67	5,048.5	-370.47	365.0	-1,145.8	-52.1	2.00	-2.00	0.00
5,300.0	7.77	287.67	5,147.3	-469.29	369.6	-1,160.3	-52.8	2.00	-2.00	0.00
5,400.0	5.77	287.67	5,246.6	-568.59	373.2	-1,171.6	-53.3	2.00	-2.00	0.00
5,500.0	3.77	287.67	5,346.2	-668.24	375.7	-1,179.5	-53.7	2.00	-2.00	0.00
5,600.0	1.77	287.67	5,446.1	-768.12	377.2	-1,184.1	-53.9	2.00	-2.00	0.00
EOD TO VERTICAL										
5,688.6	0.00	0.00	5,534.7	-856.70	377.6	-1,185.4	-53.9	2.00	-2.00	0.00
5,700.0	0.00	0.00	5,546.1	-868.10	377.6	-1,185.4	-53.9	0.00	0.00	0.00
KOP (12°/100ft BUR)										
5,718.6	0.00	0.00	5,564.7	-886.70	377.6	-1,185.4	-53.9	0.00	0.00	0.00
5,800.0	9.77	180.44	5,645.7	-967.71	370.7	-1,185.5	-47.2	12.00	12.00	0.00
5,900.0	21.77	180.44	5,741.8	-1,063.77	343.6	-1,185.7	-21.0	12.00	12.00	0.00
6,000.0	33.77	180.44	5,830.1	-1,152.09	297.1	-1,186.0	24.0	12.00	12.00	0.00
6,100.0	45.77	180.44	5,906.8	-1,228.81	233.2	-1,186.5	85.7	12.00	12.00	0.00
6,200.0	57.77	180.44	5,968.6	-1,290.59	154.8	-1,187.1	161.5	12.00	12.00	0.00
6,300.0	69.77	180.44	6,012.7	-1,334.71	65.3	-1,187.8	248.1	12.00	12.00	0.00
START OF TANGENT										
6,343.6	75.00	180.44	6,025.9	-1,347.90	23.7	-1,188.1	288.3	12.00	12.00	0.00
6,400.0	75.00	180.44	6,040.5	-1,362.49	-30.8	-1,188.5	341.0	0.00	0.00	0.00
END OF TANGENT										
6,443.6	75.00	180.44	6,051.8	-1,373.78	-72.9	-1,188.9	381.7	0.00	0.00	0.00
6,500.0	81.77	180.44	6,063.1	-1,385.13	-128.1	-1,189.3	435.1	12.00	12.00	0.00
7" ICP *NEW* - PRONGHORN A-E-22HNB										
6,568.6	90.00	180.44	6,068.0	-1,390.05	-196.4	-1,189.8	501.2	12.00	12.00	0.00
6,600.0	90.00	180.44	6,068.0	-1,390.05	-227.8	-1,190.0	531.6	0.00	0.00	0.00
6,700.0	90.00	180.44	6,068.0	-1,390.05	-327.8	-1,190.8	628.3	0.00	0.00	0.00
6,800.0	90.00	180.44	6,068.0	-1,390.05	-427.8	-1,191.6	725.0	0.00	0.00	0.00
6,900.0	90.00	180.44	6,068.0	-1,390.05	-527.8	-1,192.4	821.7	0.00	0.00	0.00
7,000.0	90.00	180.44	6,068.0	-1,390.05	-627.8	-1,193.1	918.4	0.00	0.00	0.00
7,100.0	90.00	180.44	6,068.0	-1,390.05	-727.8	-1,193.9	1,015.1	0.00	0.00	0.00
7,200.0	90.00	180.44	6,068.0	-1,390.05	-827.8	-1,194.7	1,111.8	0.00	0.00	0.00
7,300.0	90.00	180.44	6,068.0	-1,390.05	-927.8	-1,195.4	1,208.5	0.00	0.00	0.00
7,400.0	90.00	180.44	6,068.0	-1,390.04	-1,027.8	-1,196.2	1,305.3	0.00	0.00	0.00
7,500.0	90.00	180.44	6,068.0	-1,390.04	-1,127.8	-1,197.0	1,402.0	0.00	0.00	0.00
7,600.0	90.00	180.44	6,068.0	-1,390.04	-1,227.8	-1,197.7	1,498.7	0.00	0.00	0.00
7,700.0	90.00	180.44	6,068.0	-1,390.04	-1,327.8	-1,198.5	1,595.4	0.00	0.00	0.00
7,800.0	90.00	180.44	6,068.0	-1,390.04	-1,427.8	-1,199.3	1,692.1	0.00	0.00	0.00
7,900.0	90.00	180.44	6,068.0	-1,390.04	-1,527.8	-1,200.0	1,788.8	0.00	0.00	0.00
8,000.0	90.00	180.44	6,068.0	-1,390.04	-1,627.8	-1,200.8	1,885.5	0.00	0.00	0.00
8,100.0	90.00	180.44	6,068.0	-1,390.04	-1,727.8	-1,201.6	1,982.2	0.00	0.00	0.00
8,200.0	90.00	180.44	6,068.0	-1,390.04	-1,827.8	-1,202.4	2,078.9	0.00	0.00	0.00
8,300.0	90.00	180.44	6,068.0	-1,390.04	-1,927.8	-1,203.1	2,175.6	0.00	0.00	0.00
8,400.0	90.00	180.44	6,068.0	-1,390.04	-2,027.8	-1,203.9	2,272.3	0.00	0.00	0.00
8,500.0	90.00	180.44	6,068.0	-1,390.04	-2,127.8	-1,204.7	2,369.0	0.00	0.00	0.00
8,600.0	90.00	180.44	6,068.0	-1,390.04	-2,227.8	-1,205.4	2,465.7	0.00	0.00	0.00
8,700.0	90.00	180.44	6,068.0	-1,390.04	-2,327.8	-1,206.2	2,562.5	0.00	0.00	0.00
8,800.0	90.00	180.44	6,068.0	-1,390.03	-2,427.8	-1,207.0	2,659.2	0.00	0.00	0.00
8,900.0	90.00	180.44	6,068.0	-1,390.03	-2,527.8	-1,207.8	2,755.9	0.00	0.00	0.00
9,000.0	90.00	180.44	6,068.0	-1,390.03	-2,627.8	-1,208.5	2,852.6	0.00	0.00	0.00

Planning Report



Database:	EDM 5000.1 Single User Db	Local Co-ordinate Reference:	Well PRONGHORN A-E-22HNB
Company:	BONANZA CREEK ENERGY INC.	TVD Reference:	KB-EST @ 4678.0usft (Original Well Elev)
Project:	WELD COUNTY, COLORADO (NAD 83)	MD Reference:	KB-EST @ 4678.0usft (Original Well Elev)
Site:	NW NW SEC. 22 T5N R61W 6th P.M.	North Reference:	True
Well:	PRONGHORN A-E-22HNB	Survey Calculation Method:	Minimum Curvature
Wellbore:	ORIGINAL WELLBORE		
Design:	PROPOSAL #1		

Planned Survey

MD (usft)	Inc (°)	Azi (°)	TVD (usft)	SS (usft)	+N/-S (usft)	+E/-W (usft)	Vertical Section (usft)	Dogleg Rate (°/100usft)	Build Rate (°/100usft)	Turn Rate (°/100usft)
9,100.0	90.00	180.44	6,068.0	-1,390.03	-2,727.8	-1,209.3	2,949.3	0.00	0.00	0.00
9,200.0	90.00	180.44	6,068.0	-1,390.03	-2,827.8	-1,210.1	3,046.0	0.00	0.00	0.00
9,300.0	90.00	180.44	6,068.0	-1,390.03	-2,927.8	-1,210.8	3,142.7	0.00	0.00	0.00
9,400.0	90.00	180.44	6,068.0	-1,390.03	-3,027.8	-1,211.6	3,239.4	0.00	0.00	0.00
9,500.0	90.00	180.44	6,068.0	-1,390.03	-3,127.8	-1,212.4	3,336.1	0.00	0.00	0.00
9,600.0	90.00	180.44	6,068.0	-1,390.02	-3,227.8	-1,213.2	3,432.8	0.00	0.00	0.00
9,700.0	90.00	180.44	6,068.0	-1,390.02	-3,327.7	-1,213.9	3,529.5	0.00	0.00	0.00
9,800.0	90.00	180.44	6,068.0	-1,390.02	-3,427.7	-1,214.7	3,626.2	0.00	0.00	0.00
9,900.0	90.00	180.44	6,068.0	-1,390.02	-3,527.7	-1,215.5	3,723.0	0.00	0.00	0.00
10,000.0	90.00	180.44	6,068.0	-1,390.02	-3,627.7	-1,216.3	3,819.7	0.00	0.00	0.00
10,100.0	90.00	180.44	6,068.0	-1,390.02	-3,727.7	-1,217.0	3,916.4	0.00	0.00	0.00
10,200.0	90.00	180.44	6,068.0	-1,390.01	-3,827.7	-1,217.8	4,013.1	0.00	0.00	0.00
10,300.0	90.00	180.44	6,068.0	-1,390.01	-3,927.7	-1,218.6	4,109.8	0.00	0.00	0.00
10,400.0	90.00	180.44	6,068.0	-1,390.01	-4,027.7	-1,219.4	4,206.5	0.00	0.00	0.00
10,500.0	90.00	180.44	6,068.0	-1,390.01	-4,127.7	-1,220.1	4,303.2	0.00	0.00	0.00
10,600.0	90.00	180.44	6,068.0	-1,390.01	-4,227.7	-1,220.9	4,399.9	0.00	0.00	0.00
10,700.0	90.00	180.44	6,068.0	-1,390.00	-4,327.7	-1,221.7	4,496.6	0.00	0.00	0.00
10,800.0	90.00	180.44	6,068.0	-1,390.00	-4,427.7	-1,222.5	4,593.3	0.00	0.00	0.00
BHL - PRONGHORN A-E-22HNB										
10,878.8	90.00	180.44	6,068.0	-1,390.00	-4,506.5	-1,223.1	4,669.5	0.00	0.00	0.00

Plan Annotations

MD (usft)	TVD (usft)	Local Coordinates		Comment
		+N/-S (usft)	+E/-W (usft)	
100.0	100.0	0.0	0.0	START NUDGE (2°/100ft BUR)
843.2	834.9	29.1	-91.3	EOB TO 14.86° INC
4,945.4	4,799.8	348.5	-1,094.1	END OF TANGENT
5,688.6	5,534.7	377.6	-1,185.4	EOD TO VERTICAL
5,718.6	5,564.7	377.6	-1,185.4	KOP (12°/100ft BUR)
6,343.6	6,025.9	23.7	-1,188.1	START OF TANGENT
6,443.6	6,051.8	-72.9	-1,188.9	END OF TANGENT
6,568.6	6,068.0	-196.4	-1,189.8	7" ICP *NEW* - PRONGHORN A-E-22HNB
10,878.8	6,068.0	-4,506.5	-1,223.1	BHL - PRONGHORN A-E-22HNB