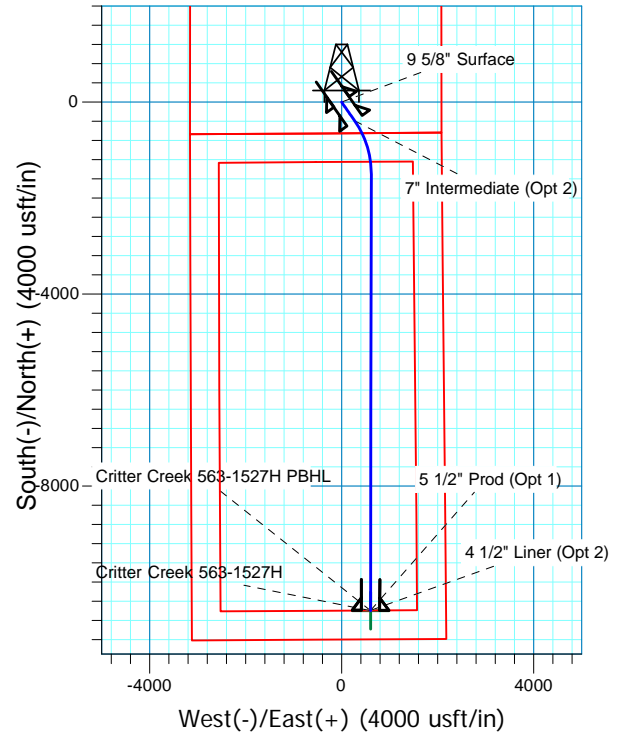
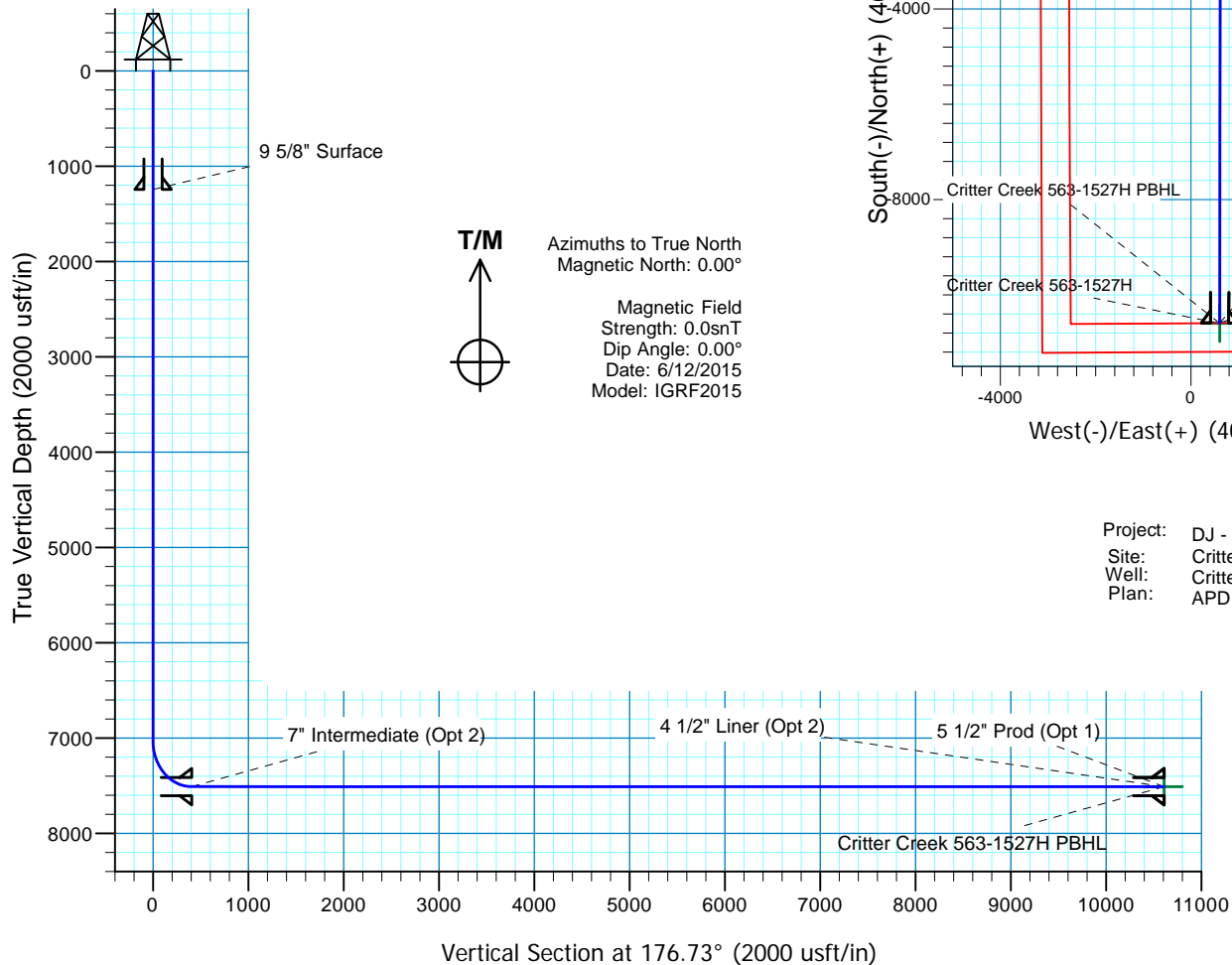


Critter Creek 563-1527H

Sec.15-T11N-R63W
Weld County, Colorado

Surface Location			
NAD 1927 (NADCON CONUS) Colorado North 501			
Ground Elevation: 5232.0 RKB @ 5257.0usft (KB GL+25')			
Northing	Easting	Latitude	Longitude
578727.59	2299452.95	40° 55' 1.132 N	104° 24' 59.559 W



Project: DJ - Hereford Ranch
Site: Critter Creek C15 SWSE Pad
Well: Critter Creek 563-1527H
Plan: APD Plan (Plat Cert 4/22/15)

SECTION DETAILS										
Sec	MD	Inc	Azi	TVD	+N/-S	+E/-W	Dleg	TFace	VSect	Target
1	0.0	0.00	0.00	0.0	0.0	0.0	0.00	0.00	0.0	
2	7033.0	0.00	0.00	7033.0	0.0	0.0	0.00	0.00	0.0	
3	7783.0	90.00	145.00	7510.5	-391.1	273.9	12.00	145.00	406.1	
4	8952.7	90.00	180.09	7510.5	-1489.6	619.3	3.00	90.00	1522.5	Critic Creek 563-1527H PBHL
5	18055.7	90.00	180.09	7510.5	-10592.6	604.9	0.00	0.00	10609.9	Critic Creek 563-1527H PBHL
TARGET DETAILS										
Name	TVD	+N/-S	+E/-W	Northing	Easting	Latitude	Longitude	Shape		
Critic Creek 563-1527H PBHL	7510.0	-10592.6	604.9	568143.16	2300187.22	40° 53' 16.469 N	104° 24' 51.684 W	Point		

Denver Division- Colorado

DJ - Hereford Ranch

Critter Creek C15 SWSE Pad

Critter Creek 563-1527H

OH

Plan: APD Plan (Plat Cert 4/22/15)

Standard Survey Report

09 July, 2015

EOG Resources, Inc.

Survey Report

Company:	Denver Division- Colorado	Local Co-ordinate Reference:	Well Critter Creek 563-1527H
Project:	DJ - Hereford Ranch	TVD Reference:	RKB @ 5257.0usft (KB GL+25')
Site:	Critter Creek C15 SWSE Pad	MD Reference:	RKB @ 5257.0usft (KB GL+25')
Well:	Critter Creek 563-1527H	North Reference:	True
Wellbore:	OH	Survey Calculation Method:	Minimum Curvature
Design:	APD Plan (Plat Cert 4/22/15)	Database:	EDM_DENVER

Project	DJ - Hereford Ranch, Weld County		
Map System:	US State Plane 1927 (Exact solution)	System Datum:	Mean Sea Level
Geo Datum:	NAD 1927 (NADCON CONUS)		
Map Zone:	Colorado North 501		

Site	Critter Creek C15 SWSE Pad		
Site Position:		Northing:	578,700.00 usft
From:	Map	Easting:	2,299,350.00 usft
Position Uncertainty:	0.0 usft	Slot Radius:	13-3/16 "
		Latitude:	40° 55' 0.872 N
		Longitude:	104° 25' 0.904 W
		Grid Convergence:	0.70 °

Well	Critter Creek 563-1527H		
Well Position	+N/-S	0.0 usft	Northing:
	+E/-W	0.0 usft	Easting:
Position Uncertainty	0.0 usft	Wellhead Elevation:	0.0 usft
		Latitude:	40° 55' 1.132 N
		Longitude:	104° 24' 59.559 W
		Ground Level:	5,232.0 usft

Wellbore	OH		
Magnetics	Model Name	Sample Date	Declination
			(°)
	IGRF2015	6/12/2015	
			Dip Angle
			(°)
			Field Strength
			(nT)

Design	APD Plan (Plat Cert 4/22/15)		
Audit Notes:			
Version:	Phase:	PROTOTYPE	Tie On Depth:
			0.0
Vertical Section:	Depth From (TVD)	+N/-S	+E/-W
	(usft)	(usft)	(usft)
	0.0	0.0	0.0
			Direction
			(°)
			176.73

Survey Tool Program	Date	7/9/2015		
From	To	Survey (Wellbore)	Tool Name	Description
(usft)	(usft)			
0.0	18,055.7	APD Plan (Plat Cert 4/22/15) (OH)	MWD	MWD - Standard

Planned Survey									
Measured	Inclination	Azimuth	Vertical	+N/-S	+E/-W	Vertical	Dogleg	Build	Turn
Depth	(°)	(°)	Depth	(usft)	(usft)	Section	Rate	Rate	Rate
(usft)			(usft)			(usft)	(°/100usft)	(°/100usft)	(°/100usft)
0.0	0.00	0.00	0.0	0.0	0.0	0.0	0.00	0.00	0.00
100.0	0.00	0.00	100.0	0.0	0.0	0.0	0.00	0.00	0.00
200.0	0.00	0.00	200.0	0.0	0.0	0.0	0.00	0.00	0.00
300.0	0.00	0.00	300.0	0.0	0.0	0.0	0.00	0.00	0.00
400.0	0.00	0.00	400.0	0.0	0.0	0.0	0.00	0.00	0.00
500.0	0.00	0.00	500.0	0.0	0.0	0.0	0.00	0.00	0.00
600.0	0.00	0.00	600.0	0.0	0.0	0.0	0.00	0.00	0.00
700.0	0.00	0.00	700.0	0.0	0.0	0.0	0.00	0.00	0.00
800.0	0.00	0.00	800.0	0.0	0.0	0.0	0.00	0.00	0.00
900.0	0.00	0.00	900.0	0.0	0.0	0.0	0.00	0.00	0.00

EOG Resources, Inc.

Survey Report

Company:	Denver Division- Colorado	Local Co-ordinate Reference:	Well Critter Creek 563-1527H
Project:	DJ - Hereford Ranch	TVD Reference:	RKB @ 5257.0usft (KB GL+25')
Site:	Critter Creek C15 SWSE Pad	MD Reference:	RKB @ 5257.0usft (KB GL+25')
Well:	Critter Creek 563-1527H	North Reference:	True
Wellbore:	OH	Survey Calculation Method:	Minimum Curvature
Design:	APD Plan (Plat Cert 4/22/15)	Database:	EDM_DENVER

Planned Survey

Measured Depth (usft)	Inclination (°)	Azimuth (°)	Vertical Depth (usft)	+N/-S (usft)	+E/-W (usft)	Vertical Section (usft)	Dogleg Rate (°/100usft)	Build Rate (°/100usft)	Turn Rate (°/100usft)
1,000.0	0.00	0.00	1,000.0	0.0	0.0	0.0	0.00	0.00	0.00
1,100.0	0.00	0.00	1,100.0	0.0	0.0	0.0	0.00	0.00	0.00
1,200.0	0.00	0.00	1,200.0	0.0	0.0	0.0	0.00	0.00	0.00
1,244.0	0.00	0.00	1,244.0	0.0	0.0	0.0	0.00	0.00	0.00
9 5/8" Surface									
1,300.0	0.00	0.00	1,300.0	0.0	0.0	0.0	0.00	0.00	0.00
1,400.0	0.00	0.00	1,400.0	0.0	0.0	0.0	0.00	0.00	0.00
1,500.0	0.00	0.00	1,500.0	0.0	0.0	0.0	0.00	0.00	0.00
1,600.0	0.00	0.00	1,600.0	0.0	0.0	0.0	0.00	0.00	0.00
1,700.0	0.00	0.00	1,700.0	0.0	0.0	0.0	0.00	0.00	0.00
1,800.0	0.00	0.00	1,800.0	0.0	0.0	0.0	0.00	0.00	0.00
1,900.0	0.00	0.00	1,900.0	0.0	0.0	0.0	0.00	0.00	0.00
2,000.0	0.00	0.00	2,000.0	0.0	0.0	0.0	0.00	0.00	0.00
2,100.0	0.00	0.00	2,100.0	0.0	0.0	0.0	0.00	0.00	0.00
2,200.0	0.00	0.00	2,200.0	0.0	0.0	0.0	0.00	0.00	0.00
2,300.0	0.00	0.00	2,300.0	0.0	0.0	0.0	0.00	0.00	0.00
2,400.0	0.00	0.00	2,400.0	0.0	0.0	0.0	0.00	0.00	0.00
2,500.0	0.00	0.00	2,500.0	0.0	0.0	0.0	0.00	0.00	0.00
2,600.0	0.00	0.00	2,600.0	0.0	0.0	0.0	0.00	0.00	0.00
2,700.0	0.00	0.00	2,700.0	0.0	0.0	0.0	0.00	0.00	0.00
2,800.0	0.00	0.00	2,800.0	0.0	0.0	0.0	0.00	0.00	0.00
2,900.0	0.00	0.00	2,900.0	0.0	0.0	0.0	0.00	0.00	0.00
3,000.0	0.00	0.00	3,000.0	0.0	0.0	0.0	0.00	0.00	0.00
3,100.0	0.00	0.00	3,100.0	0.0	0.0	0.0	0.00	0.00	0.00
3,200.0	0.00	0.00	3,200.0	0.0	0.0	0.0	0.00	0.00	0.00
3,300.0	0.00	0.00	3,300.0	0.0	0.0	0.0	0.00	0.00	0.00
3,400.0	0.00	0.00	3,400.0	0.0	0.0	0.0	0.00	0.00	0.00
3,500.0	0.00	0.00	3,500.0	0.0	0.0	0.0	0.00	0.00	0.00
3,600.0	0.00	0.00	3,600.0	0.0	0.0	0.0	0.00	0.00	0.00
3,700.0	0.00	0.00	3,700.0	0.0	0.0	0.0	0.00	0.00	0.00
3,800.0	0.00	0.00	3,800.0	0.0	0.0	0.0	0.00	0.00	0.00
3,900.0	0.00	0.00	3,900.0	0.0	0.0	0.0	0.00	0.00	0.00
4,000.0	0.00	0.00	4,000.0	0.0	0.0	0.0	0.00	0.00	0.00
4,100.0	0.00	0.00	4,100.0	0.0	0.0	0.0	0.00	0.00	0.00
4,200.0	0.00	0.00	4,200.0	0.0	0.0	0.0	0.00	0.00	0.00
4,300.0	0.00	0.00	4,300.0	0.0	0.0	0.0	0.00	0.00	0.00
4,400.0	0.00	0.00	4,400.0	0.0	0.0	0.0	0.00	0.00	0.00
4,500.0	0.00	0.00	4,500.0	0.0	0.0	0.0	0.00	0.00	0.00
4,600.0	0.00	0.00	4,600.0	0.0	0.0	0.0	0.00	0.00	0.00
4,700.0	0.00	0.00	4,700.0	0.0	0.0	0.0	0.00	0.00	0.00
4,800.0	0.00	0.00	4,800.0	0.0	0.0	0.0	0.00	0.00	0.00
4,900.0	0.00	0.00	4,900.0	0.0	0.0	0.0	0.00	0.00	0.00
5,000.0	0.00	0.00	5,000.0	0.0	0.0	0.0	0.00	0.00	0.00
5,100.0	0.00	0.00	5,100.0	0.0	0.0	0.0	0.00	0.00	0.00

EOG Resources, Inc.

Survey Report

Company:	Denver Division- Colorado	Local Co-ordinate Reference:	Well Critter Creek 563-1527H
Project:	DJ - Hereford Ranch	TVD Reference:	RKB @ 5257.0usft (KB GL+25')
Site:	Critter Creek C15 SWSE Pad	MD Reference:	RKB @ 5257.0usft (KB GL+25')
Well:	Critter Creek 563-1527H	North Reference:	True
Wellbore:	OH	Survey Calculation Method:	Minimum Curvature
Design:	APD Plan (Plat Cert 4/22/15)	Database:	EDM_DENVER

Planned Survey

Measured Depth (usft)	Inclination (°)	Azimuth (°)	Vertical Depth (usft)	+N/-S (usft)	+E/-W (usft)	Vertical Section (usft)	Dogleg Rate (°/100usft)	Build Rate (°/100usft)	Turn Rate (°/100usft)
5,200.0	0.00	0.00	5,200.0	0.0	0.0	0.0	0.00	0.00	0.00
5,300.0	0.00	0.00	5,300.0	0.0	0.0	0.0	0.00	0.00	0.00
5,400.0	0.00	0.00	5,400.0	0.0	0.0	0.0	0.00	0.00	0.00
5,500.0	0.00	0.00	5,500.0	0.0	0.0	0.0	0.00	0.00	0.00
5,600.0	0.00	0.00	5,600.0	0.0	0.0	0.0	0.00	0.00	0.00
5,700.0	0.00	0.00	5,700.0	0.0	0.0	0.0	0.00	0.00	0.00
5,800.0	0.00	0.00	5,800.0	0.0	0.0	0.0	0.00	0.00	0.00
5,900.0	0.00	0.00	5,900.0	0.0	0.0	0.0	0.00	0.00	0.00
6,000.0	0.00	0.00	6,000.0	0.0	0.0	0.0	0.00	0.00	0.00
6,100.0	0.00	0.00	6,100.0	0.0	0.0	0.0	0.00	0.00	0.00
6,200.0	0.00	0.00	6,200.0	0.0	0.0	0.0	0.00	0.00	0.00
6,300.0	0.00	0.00	6,300.0	0.0	0.0	0.0	0.00	0.00	0.00
6,400.0	0.00	0.00	6,400.0	0.0	0.0	0.0	0.00	0.00	0.00
6,500.0	0.00	0.00	6,500.0	0.0	0.0	0.0	0.00	0.00	0.00
6,600.0	0.00	0.00	6,600.0	0.0	0.0	0.0	0.00	0.00	0.00
6,700.0	0.00	0.00	6,700.0	0.0	0.0	0.0	0.00	0.00	0.00
6,800.0	0.00	0.00	6,800.0	0.0	0.0	0.0	0.00	0.00	0.00
6,900.0	0.00	0.00	6,900.0	0.0	0.0	0.0	0.00	0.00	0.00
7,000.0	0.00	0.00	7,000.0	0.0	0.0	0.0	0.00	0.00	0.00
7,033.0	0.00	0.00	7,033.0	0.0	0.0	0.0	0.00	0.00	0.00
7,100.0	8.04	145.00	7,099.8	-3.8	2.7	4.0	12.00	12.00	0.00
7,200.0	20.04	145.00	7,196.6	-23.7	16.6	24.6	12.00	12.00	0.00
7,300.0	32.04	145.00	7,286.3	-59.6	41.7	61.9	12.00	12.00	0.00
7,400.0	44.04	145.00	7,364.9	-110.0	77.0	114.2	12.00	12.00	0.00
7,500.0	56.04	145.00	7,429.0	-172.6	120.9	179.2	12.00	12.00	0.00
7,600.0	68.04	145.00	7,475.8	-244.9	171.4	254.2	12.00	12.00	0.00
7,700.0	80.04	145.00	7,503.3	-323.5	226.5	335.9	12.00	12.00	0.00
7,783.0	90.00	145.00	7,510.5	-391.1	273.9	406.1	12.00	12.00	0.00
7" Intermediate (Opt 2)									
7,800.0	90.00	145.51	7,510.5	-405.1	283.6	420.6	3.00	0.00	3.00
7,900.0	90.00	148.51	7,510.5	-489.0	338.0	507.4	3.00	0.00	3.00
8,000.0	90.00	151.51	7,510.5	-575.6	388.0	596.7	3.00	0.00	3.00
8,100.0	90.00	154.51	7,510.5	-664.7	433.4	688.3	3.00	0.00	3.00
8,200.0	90.00	157.51	7,510.5	-756.0	474.0	781.8	3.00	0.00	3.00
8,300.0	90.00	160.51	7,510.5	-849.4	509.8	877.0	3.00	0.00	3.00
8,400.0	90.00	163.51	7,510.5	-944.5	540.7	973.7	3.00	0.00	3.00
8,500.0	90.00	166.51	7,510.5	-1,041.0	566.6	1,071.7	3.00	0.00	3.00
8,600.0	90.00	169.51	7,510.5	-1,138.9	587.3	1,170.5	3.00	0.00	3.00
8,700.0	90.00	172.51	7,510.5	-1,237.6	603.0	1,270.0	3.00	0.00	3.00
8,800.0	90.00	175.51	7,510.5	-1,337.1	613.4	1,369.8	3.00	0.00	3.00
8,900.0	90.00	178.51	7,510.5	-1,436.9	618.6	1,469.8	3.00	0.00	3.00
8,952.7	90.00	180.09	7,510.5	-1,489.6	619.3	1,522.5	3.00	0.00	3.00
9,000.0	90.00	180.09	7,510.5	-1,536.9	619.2	1,569.7	0.00	0.00	0.00

EOG Resources, Inc.

Survey Report

Company:	Denver Division- Colorado	Local Co-ordinate Reference:	Well Critter Creek 563-1527H
Project:	DJ - Hereford Ranch	TVD Reference:	RKB @ 5257.0usft (KB GL+25')
Site:	Critter Creek C15 SWSE Pad	MD Reference:	RKB @ 5257.0usft (KB GL+25')
Well:	Critter Creek 563-1527H	North Reference:	True
Wellbore:	OH	Survey Calculation Method:	Minimum Curvature
Design:	APD Plan (Plat Cert 4/22/15)	Database:	EDM_DENVER

Planned Survey

Measured Depth (usft)	Inclination (°)	Azimuth (°)	Vertical Depth (usft)	+N/-S (usft)	+E/-W (usft)	Vertical Section (usft)	Dogleg Rate (°/100usft)	Build Rate (°/100usft)	Turn Rate (°/100usft)
9,100.0	90.00	180.09	7,510.5	-1,636.9	619.0	1,669.5	0.00	0.00	0.00
9,200.0	90.00	180.09	7,510.5	-1,736.9	618.9	1,769.4	0.00	0.00	0.00
9,300.0	90.00	180.09	7,510.5	-1,836.9	618.7	1,869.2	0.00	0.00	0.00
9,400.0	90.00	180.09	7,510.5	-1,936.9	618.5	1,969.0	0.00	0.00	0.00
9,500.0	90.00	180.09	7,510.5	-2,036.9	618.4	2,068.8	0.00	0.00	0.00
9,600.0	90.00	180.09	7,510.5	-2,136.9	618.2	2,168.7	0.00	0.00	0.00
9,700.0	90.00	180.09	7,510.5	-2,236.9	618.1	2,268.5	0.00	0.00	0.00
9,800.0	90.00	180.09	7,510.5	-2,336.9	617.9	2,368.3	0.00	0.00	0.00
9,900.0	90.00	180.09	7,510.5	-2,436.9	617.8	2,468.2	0.00	0.00	0.00
10,000.0	90.00	180.09	7,510.5	-2,536.9	617.6	2,568.0	0.00	0.00	0.00
10,100.0	90.00	180.09	7,510.5	-2,636.9	617.4	2,667.8	0.00	0.00	0.00
10,200.0	90.00	180.09	7,510.5	-2,736.9	617.3	2,767.6	0.00	0.00	0.00
10,300.0	90.00	180.09	7,510.5	-2,836.9	617.1	2,867.5	0.00	0.00	0.00
10,400.0	90.00	180.09	7,510.5	-2,936.9	617.0	2,967.3	0.00	0.00	0.00
10,500.0	90.00	180.09	7,510.5	-3,036.9	616.8	3,067.1	0.00	0.00	0.00
10,600.0	90.00	180.09	7,510.5	-3,136.9	616.7	3,167.0	0.00	0.00	0.00
10,700.0	90.00	180.09	7,510.5	-3,236.9	616.5	3,266.8	0.00	0.00	0.00
10,800.0	90.00	180.09	7,510.5	-3,336.9	616.3	3,366.6	0.00	0.00	0.00
10,900.0	90.00	180.09	7,510.5	-3,436.9	616.2	3,466.4	0.00	0.00	0.00
11,000.0	90.00	180.09	7,510.5	-3,536.9	616.0	3,566.3	0.00	0.00	0.00
11,100.0	90.00	180.09	7,510.5	-3,636.9	615.9	3,666.1	0.00	0.00	0.00
11,200.0	90.00	180.09	7,510.5	-3,736.9	615.7	3,765.9	0.00	0.00	0.00
11,300.0	90.00	180.09	7,510.5	-3,836.9	615.6	3,865.8	0.00	0.00	0.00
11,400.0	90.00	180.09	7,510.5	-3,936.9	615.4	3,965.6	0.00	0.00	0.00
11,500.0	90.00	180.09	7,510.5	-4,036.9	615.2	4,065.4	0.00	0.00	0.00
11,600.0	90.00	180.09	7,510.5	-4,136.9	615.1	4,165.2	0.00	0.00	0.00
11,700.0	90.00	180.09	7,510.5	-4,236.9	614.9	4,265.1	0.00	0.00	0.00
11,800.0	90.00	180.09	7,510.5	-4,336.9	614.8	4,364.9	0.00	0.00	0.00
11,900.0	90.00	180.09	7,510.5	-4,436.9	614.6	4,464.7	0.00	0.00	0.00
12,000.0	90.00	180.09	7,510.5	-4,536.9	614.4	4,564.5	0.00	0.00	0.00
12,100.0	90.00	180.09	7,510.5	-4,636.9	614.3	4,664.4	0.00	0.00	0.00
12,200.0	90.00	180.09	7,510.5	-4,736.9	614.1	4,764.2	0.00	0.00	0.00
12,300.0	90.00	180.09	7,510.5	-4,836.9	614.0	4,864.0	0.00	0.00	0.00
12,400.0	90.00	180.09	7,510.5	-4,936.9	613.8	4,963.9	0.00	0.00	0.00
12,500.0	90.00	180.09	7,510.5	-5,036.9	613.7	5,063.7	0.00	0.00	0.00
12,600.0	90.00	180.09	7,510.5	-5,136.9	613.5	5,163.5	0.00	0.00	0.00
12,700.0	90.00	180.09	7,510.5	-5,236.9	613.3	5,263.3	0.00	0.00	0.00
12,800.0	90.00	180.09	7,510.5	-5,336.9	613.2	5,363.2	0.00	0.00	0.00
12,900.0	90.00	180.09	7,510.5	-5,436.9	613.0	5,463.0	0.00	0.00	0.00
13,000.0	90.00	180.09	7,510.5	-5,536.9	612.9	5,562.8	0.00	0.00	0.00
13,100.0	90.00	180.09	7,510.5	-5,636.9	612.7	5,662.7	0.00	0.00	0.00
13,200.0	90.00	180.09	7,510.5	-5,736.9	612.6	5,762.5	0.00	0.00	0.00
13,300.0	90.00	180.09	7,510.5	-5,836.9	612.4	5,862.3	0.00	0.00	0.00
13,400.0	90.00	180.09	7,510.5	-5,936.9	612.2	5,962.1	0.00	0.00	0.00

EOG Resources, Inc.

Survey Report

Company:	Denver Division- Colorado	Local Co-ordinate Reference:	Well Critter Creek 563-1527H
Project:	DJ - Hereford Ranch	TVD Reference:	RKB @ 5257.0usft (KB GL+25')
Site:	Critter Creek C15 SWSE Pad	MD Reference:	RKB @ 5257.0usft (KB GL+25')
Well:	Critter Creek 563-1527H	North Reference:	True
Wellbore:	OH	Survey Calculation Method:	Minimum Curvature
Design:	APD Plan (Plat Cert 4/22/15)	Database:	EDM_DENVER

Planned Survey

Measured Depth (usft)	Inclination (°)	Azimuth (°)	Vertical Depth (usft)	+N/-S (usft)	+E/-W (usft)	Vertical Section (usft)	Dogleg Rate (°/100usft)	Build Rate (°/100usft)	Turn Rate (°/100usft)
13,500.0	90.00	180.09	7,510.5	-6,036.9	612.1	6,062.0	0.00	0.00	0.00
13,600.0	90.00	180.09	7,510.5	-6,136.9	611.9	6,161.8	0.00	0.00	0.00
13,700.0	90.00	180.09	7,510.5	-6,236.9	611.8	6,261.6	0.00	0.00	0.00
13,800.0	90.00	180.09	7,510.5	-6,336.9	611.6	6,361.5	0.00	0.00	0.00
13,900.0	90.00	180.09	7,510.5	-6,436.9	611.5	6,461.3	0.00	0.00	0.00
14,000.0	90.00	180.09	7,510.5	-6,536.9	611.3	6,561.1	0.00	0.00	0.00
14,100.0	90.00	180.09	7,510.5	-6,636.9	611.1	6,660.9	0.00	0.00	0.00
14,200.0	90.00	180.09	7,510.5	-6,736.9	611.0	6,760.8	0.00	0.00	0.00
14,300.0	90.00	180.09	7,510.5	-6,836.9	610.8	6,860.6	0.00	0.00	0.00
14,400.0	90.00	180.09	7,510.5	-6,936.9	610.7	6,960.4	0.00	0.00	0.00
14,500.0	90.00	180.09	7,510.5	-7,036.9	610.5	7,060.3	0.00	0.00	0.00
14,600.0	90.00	180.09	7,510.5	-7,136.9	610.3	7,160.1	0.00	0.00	0.00
14,700.0	90.00	180.09	7,510.5	-7,236.9	610.2	7,259.9	0.00	0.00	0.00
14,800.0	90.00	180.09	7,510.5	-7,336.9	610.0	7,359.7	0.00	0.00	0.00
14,900.0	90.00	180.09	7,510.5	-7,436.9	609.9	7,459.6	0.00	0.00	0.00
15,000.0	90.00	180.09	7,510.5	-7,536.9	609.7	7,559.4	0.00	0.00	0.00
15,100.0	90.00	180.09	7,510.5	-7,636.9	609.6	7,659.2	0.00	0.00	0.00
15,200.0	90.00	180.09	7,510.5	-7,736.9	609.4	7,759.1	0.00	0.00	0.00
15,300.0	90.00	180.09	7,510.5	-7,836.9	609.2	7,858.9	0.00	0.00	0.00
15,400.0	90.00	180.09	7,510.5	-7,936.9	609.1	7,958.7	0.00	0.00	0.00
15,500.0	90.00	180.09	7,510.5	-8,036.9	608.9	8,058.5	0.00	0.00	0.00
15,600.0	90.00	180.09	7,510.5	-8,136.9	608.8	8,158.4	0.00	0.00	0.00
15,700.0	90.00	180.09	7,510.5	-8,236.9	608.6	8,258.2	0.00	0.00	0.00
15,800.0	90.00	180.09	7,510.5	-8,336.9	608.5	8,358.0	0.00	0.00	0.00
15,900.0	90.00	180.09	7,510.5	-8,436.9	608.3	8,457.8	0.00	0.00	0.00
16,000.0	90.00	180.09	7,510.5	-8,536.9	608.1	8,557.7	0.00	0.00	0.00
16,100.0	90.00	180.09	7,510.5	-8,636.9	608.0	8,657.5	0.00	0.00	0.00
16,200.0	90.00	180.09	7,510.5	-8,736.9	607.8	8,757.3	0.00	0.00	0.00
16,300.0	90.00	180.09	7,510.5	-8,836.9	607.7	8,857.2	0.00	0.00	0.00
16,400.0	90.00	180.09	7,510.5	-8,936.9	607.5	8,957.0	0.00	0.00	0.00
16,500.0	90.00	180.09	7,510.5	-9,036.9	607.3	9,056.8	0.00	0.00	0.00
16,600.0	90.00	180.09	7,510.5	-9,136.9	607.2	9,156.6	0.00	0.00	0.00
16,700.0	90.00	180.09	7,510.5	-9,236.9	607.0	9,256.5	0.00	0.00	0.00
16,800.0	90.00	180.09	7,510.5	-9,336.9	606.9	9,356.3	0.00	0.00	0.00
16,900.0	90.00	180.09	7,510.5	-9,436.9	606.7	9,456.1	0.00	0.00	0.00
17,000.0	90.00	180.09	7,510.5	-9,536.9	606.6	9,556.0	0.00	0.00	0.00
17,100.0	90.00	180.09	7,510.5	-9,636.9	606.4	9,655.8	0.00	0.00	0.00
17,200.0	90.00	180.09	7,510.5	-9,736.9	606.2	9,755.6	0.00	0.00	0.00
17,300.0	90.00	180.09	7,510.5	-9,836.9	606.1	9,855.4	0.00	0.00	0.00
17,400.0	90.00	180.09	7,510.5	-9,936.9	605.9	9,955.3	0.00	0.00	0.00
17,500.0	90.00	180.09	7,510.5	-10,036.9	605.8	10,055.1	0.00	0.00	0.00
17,600.0	90.00	180.09	7,510.5	-10,136.9	605.6	10,154.9	0.00	0.00	0.00
17,700.0	90.00	180.09	7,510.5	-10,236.9	605.5	10,254.8	0.00	0.00	0.00

EOG Resources, Inc.

Survey Report

Company:	Denver Division- Colorado	Local Co-ordinate Reference:	Well Critter Creek 563-1527H
Project:	DJ - Hereford Ranch	TVD Reference:	RKB @ 5257.0usft (KB GL+25')
Site:	Critter Creek C15 SWSE Pad	MD Reference:	RKB @ 5257.0usft (KB GL+25')
Well:	Critter Creek 563-1527H	North Reference:	True
Wellbore:	OH	Survey Calculation Method:	Minimum Curvature
Design:	APD Plan (Plat Cert 4/22/15)	Database:	EDM_DENVER

Planned Survey

Measured Depth (usft)	Inclination (°)	Azimuth (°)	Vertical Depth (usft)	+N/-S (usft)	+E/-W (usft)	Vertical Section (usft)	Dogleg Rate (°/100usft)	Build Rate (°/100usft)	Turn Rate (°/100usft)
17,800.0	90.00	180.09	7,510.5	-10,336.9	605.3	10,354.6	0.00	0.00	0.00
17,900.0	90.00	180.09	7,510.5	-10,436.9	605.1	10,454.4	0.00	0.00	0.00
18,000.0	90.00	180.09	7,510.5	-10,536.9	605.0	10,554.2	0.00	0.00	0.00
18,055.0	90.00	180.09	7,510.5	-10,591.9	604.9	10,609.1	0.00	0.00	0.00
5 1/2" Prod (Opt 1) - 4 1/2" Liner (Opt 2)									
18,055.7	90.00	180.09	7,510.5	-10,592.6	604.9	10,609.9	0.00	0.00	0.00
Critter Creek 563-1527H PBHL									

Design Targets

Target Name	Dip Angle (°)	Dip Dir. (°)	TVD (usft)	+N/-S (usft)	+E/-W (usft)	Northing (usft)	Easting (usft)	Latitude	Longitude
- hit/miss target									
- Shape									
Critter Creek 563-1527H	0.00	0.00	7,510.0	-10,592.6	604.9	568,143.16	2,300,187.22	40° 53' 16.469 N	104° 24' 51.684 W
- plan misses target center by 0.5usft at 18055.7usft MD (7510.5 TVD, -10592.6 N, 604.9 E)									
- Point									

Casing Points

Measured Depth (usft)	Vertical Depth (usft)	Name	Casing Diameter (")	Hole Diameter (")
1,244.0	1,244.0	9 5/8" Surface	9-5/8	13-1/2
7,783.0	7,510.5	7" Intermediate (Opt 2)	7	8-3/4
18,055.0	7,510.5	5 1/2" Prod (Opt 1)	5-1/2	8-3/4
18,055.0	7,510.5	4 1/2" Liner (Opt 2)	4-1/2	6-1/8

Checked By: _____ Approved By: _____ Date: _____