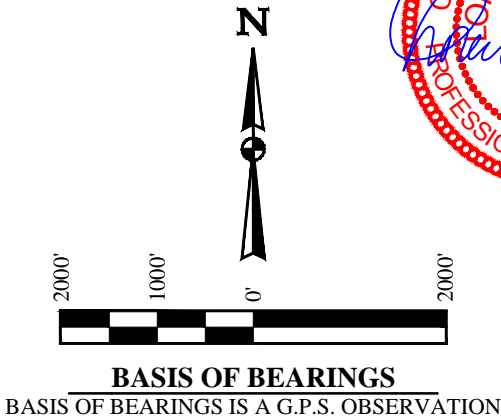
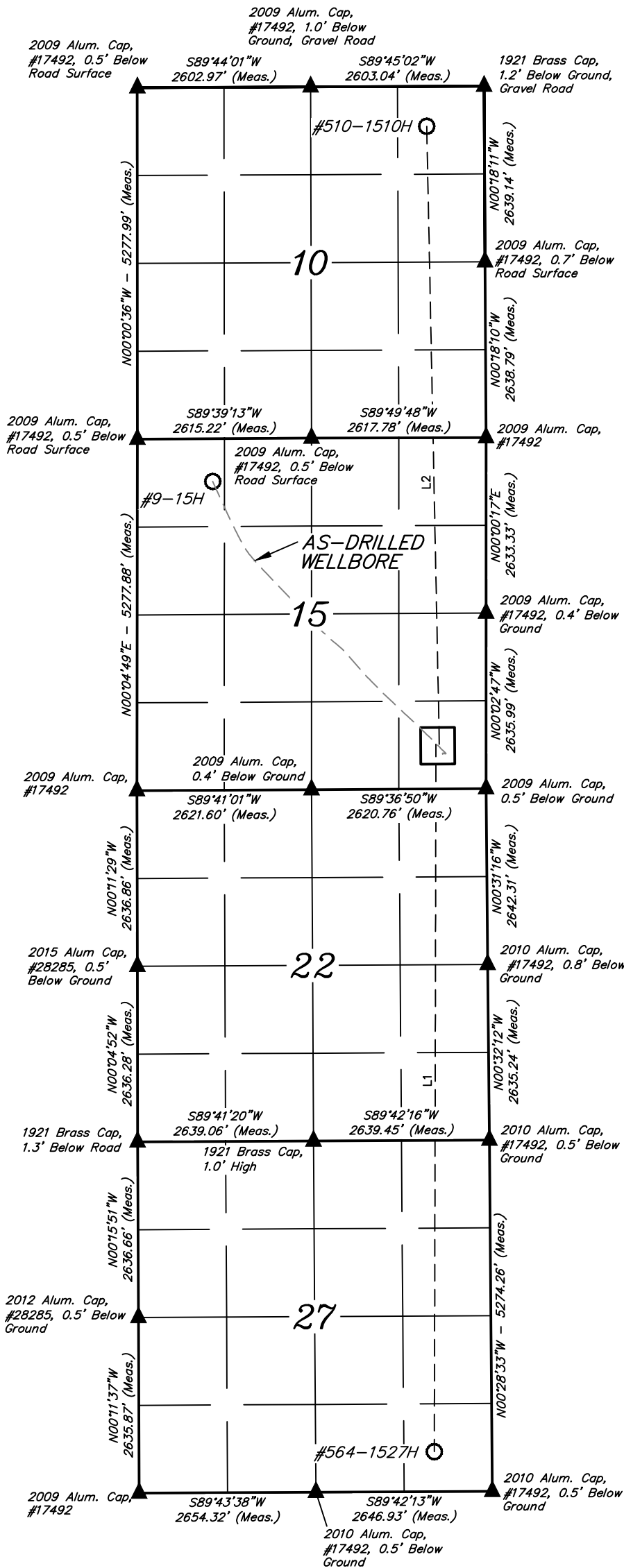


LEGEND:

- = BOTTOM HOLE.
▲ = SECTION CORNERS LOCATED.

T11N, R63W, 6th P.M.



BASIS OF BEARINGS
BASIS OF BEARINGS IS A G.P.S. OBSERVATION

LINE TABLE		
LINE	DIRECTION	LENGTH
L1	S00°08'03"W	10621.66'
L2	N01°10'03"W	9279.31'

WELL	SHL FOOTAGES	SECTION	TOWNSHIP	RANGE
#510-1510H	671' FSL 702' FEL	15	11N	63W
#564-1527H	671' FSL 752' FEL	15	11N	63W

WELL	BHL FOOTAGES	SECTION	TOWNSHIP	RANGE
#510-1510H	600' FNL 865' FEL	10	11N	63W
#564-1527H	600' FSL 865' FEL	27	11N	63W

EOG RESOURCES, INC.

CRITTER CREEK 15 SESE ON EXISTING
CRITTER CREEK #9-15H PAD
SE 1/4 SE 1/4, SECTION 15, T11N, R63W, 6th P.M.
WELD COUNTY, COLORADO



UELS, LLC
Corporate Office * 85 South 200 East
Vernal, UT 84078 * (435) 789-1017

DRAWN BY: T.B.	DATE DRAWN: 04-02-15
SCALE: 1" = 2000'	REVISED: 07-31-15 J.W.
MULTI-WELL PLAN	FIGURE #6