



Corporate Office

1775 Sherman Street, #3000
Denver, Colorado 80203
303.860.5800
www.pdce.com

June 24, 2015

Department of Natural Resources
Oil and Gas Conservation Commission
The Chancery Building
Attn: Matt Lepore
1120 Lincoln St., Suite 801
Denver, CO 80203

Re: **30 Day Certification Letter – Rule 318Ae**
Spaur 10T-421
SESW, Section 10-T4N-R67W, 6th PM
Weld County, Colorado

Dear Director,

PDC Energy, Inc. ("PDC") hereby certifies to the Director that a thirty (30-day) notice has been given by certified mail to all owners in the proposed wellbore spacing unit consisting of the E2 of Sec. 10 T4N R67W, 320 acres. We have not received any objections to such well location or proposed spacing unit, therefore, PDC hereby requests the Director to approve the well.

If you should have any questions or concerns regarding this permit, please contact the undersigned at (303) 860-5800.

Sincerely,

A handwritten signature in blue ink that reads "Kelsi Welch".

Kelsi Welch
Regulatory Analyst
PDC Energy

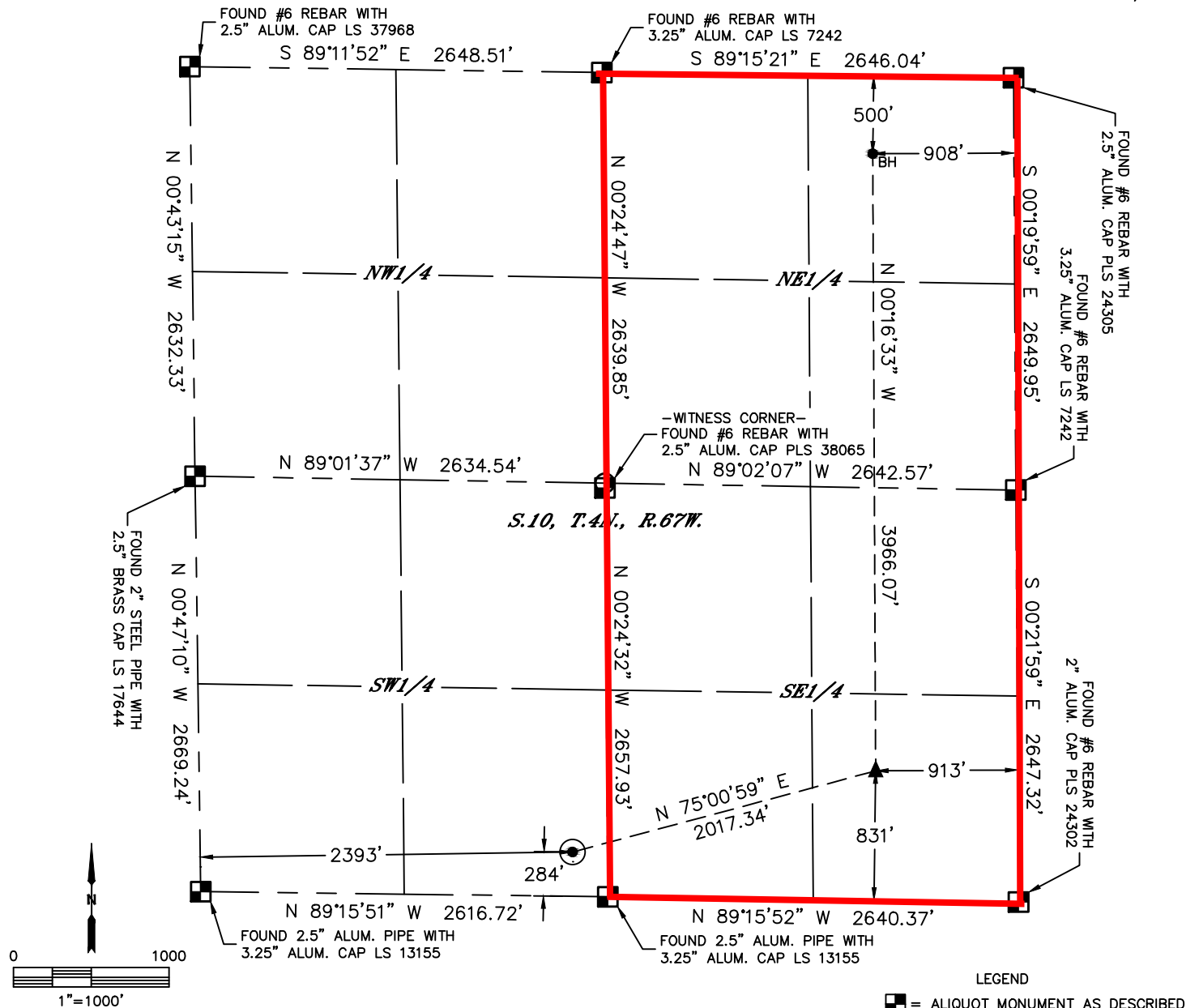


Lat40°, Inc. 6250 W. 10th St, Unit 2 Greeley, CO 970-515-5294

WELL LOCATION CERTIFICATE

SPAUR 10T-421

SECTION: 10
TOWNSHIP: 4N
RANGE: 67W
6TH P.M.
WELD COUNTY, CO



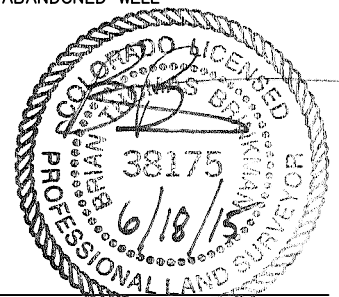
CLIENT: PDC ENERGY				LANDMAN: BARNEY HAMMOND		
INSTRUMENT OPERATOR: ADAM BEAUPREZ				SURVEY DATE: 5/18/2015		SURFACE USE: CROP LAND
SHL FOOTAGE	SHL LAT °	SHL LONG °	SHL PDOP	SHL ELEV (FT.)	SHL 1/4/1/4	SHL S-T-R
284	FSL	2393	FWL	40.32036	-104.87794	1.4

BHL FOOTAGE	BHL LAT °	BHL LONG °	BHL 1/4/1/4	BHL S-T-R	EP LAT °	EP LONG °	EP S-T-R
500	FNL	908	FEL	40.33264	-104.87091	NENE	10-4-67

NEAREST CULTURAL ITEMS	
BUILDING	±1807' NE
BUILDING UNIT	±1807' NE
HIGH OCCUPANCY BUILDING UNIT	±2606' NE
DESIGNATED OUTSIDE ACTIVITY AREA	5280'+
PUBLIC ROAD (COUNTY ROAD 46)	±275' S
ABOVE GROUND UTILITY	±255' S
RAILROAD	±5051' N
PROPERTY LINE	±225' E

NOTE:
1) Bearings shown are Grid Bearings of the Colorado State Plane Coordinate System, North Zone, North American Datum 1983. The lineal dimensions as contained herein are based upon the "U.S. Survey Foot."
2) Distances to section lines measured at 90 degrees from said section lines.
3) Ground elevations are based on an observed GPS elevation (NAVD 1988 DATUM).
4) Latitude and Longitude shown are (NAD 83 DATUM).
5) IMPROVEMENTS: See LOCATION DRAWING for all visible improvements within 500' of Oil and Gas Location.
6) This map does not represent a boundary survey

- LEGEND
- = ALIQUOT MONUMENT AS DESCRIBED
 - = CALCULATED POSITION
 - = SURFACE HOLE LOCATION (SHL)
 - ▲ = ENTRY POINT LOCATION (EP)
 - BH = BOTTOM HOLE LOCATION (BHL)
 - ⊕ = EXISTING WELL
 - ⊖ = ABANDONED WELL



Brian T. Brinkman—On behalf of Lat40°, Inc.
Colorado Licensed Professional Land Surveyor No. 38175
DATE: 5/21/2015
PROJECT#: 2014159