

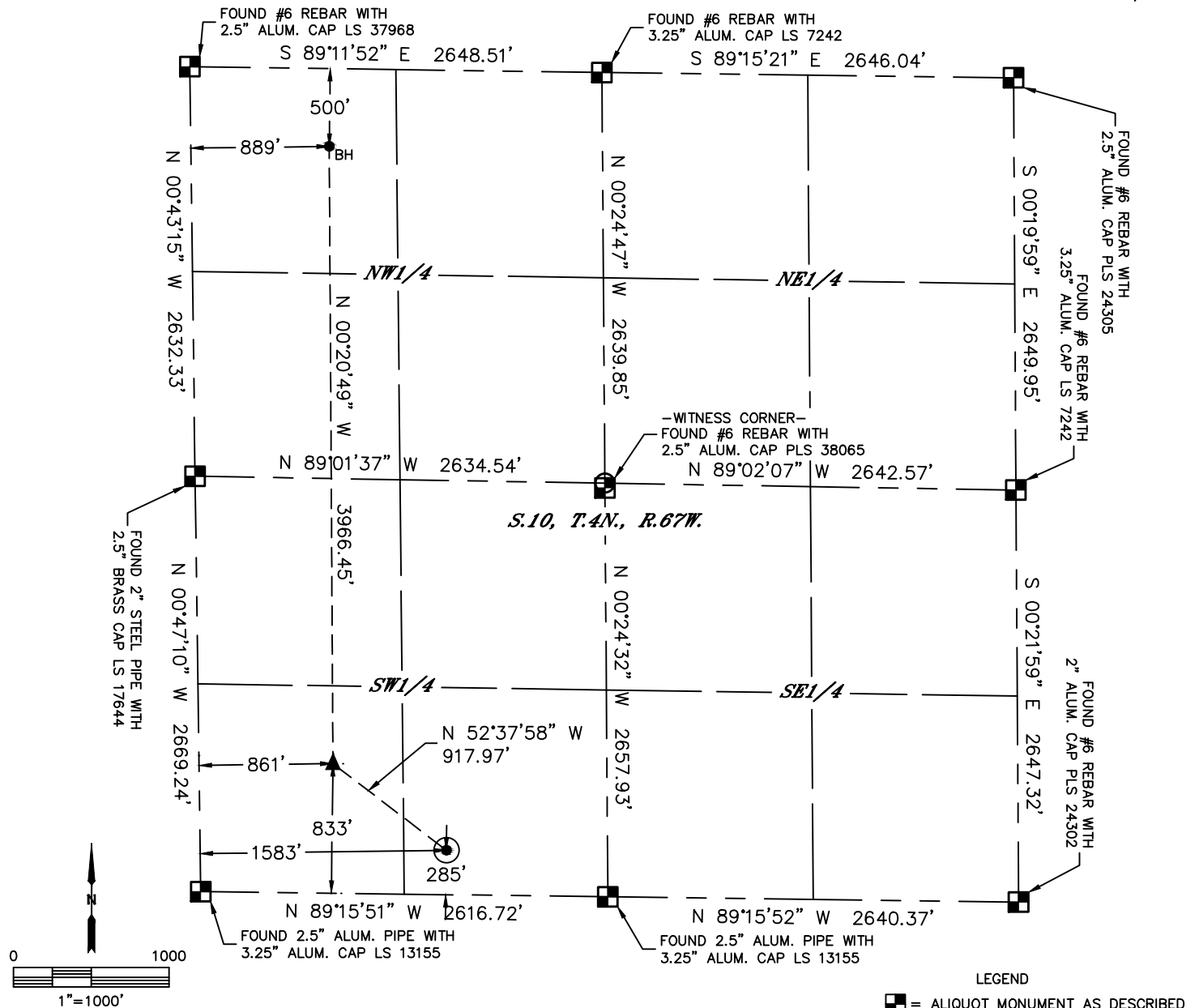


Lat40°, Inc. 6250 W. 10th St, Unit 2 Greeley, CO 970-515-5294

WELL LOCATION CERTIFICATE

SPAUR 10L-241

SECTION: 10
TOWNSHIP: 4N
RANGE: 67W
6TH P.M.
WELD COUNTY, CO



CLIENT: PDC ENERGY						LANDMAN: BARNEY HAMMOND			
INSTRUMENT OPERATOR: ADAM BEAUPREZ						SURVEY DATE: 5/18/2015		SURFACE USE: CROP LAND	
SHL FOOTAGE				SHL LAT °	SHL LONG °	SHL PDOP	SHL ELEV (FT.)	SHL 1/4/1/4	SHL S-T-R
285	FSL	1583	FWL	40.32041	-104.88085	2.7	4840	SESW	10-4-67

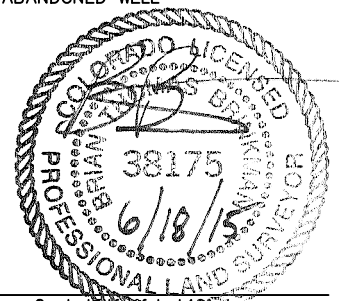
BHL FOOTAGE				BHL LAT °	BHL LONG °	BHL 1/4/1/4	BHL S-T-R	EP LAT °	EP LONG °	EP S-T-R
500	FNL	889	FWL	40.33284	-104.88344	NWNW	10-4-67	40.32195	-104.88345	10-4-67

NOTE:

- 1) Bearings shown are Grid Bearings of the Colorado State Plane Coordinate System, North Zone, North American Datum 1983. The lineal dimensions as contained herein are based upon the "U.S. Survey Foot."
- 2) Distances to section lines measured at 90 degrees from said section lines.
- 3) Ground elevations are based on an observed GPS elevation (NAVD 1988 DATUM).
- 4) Latitude and Longitude shown are (NAD 83 DATUM).
- 5) IMPROVEMENTS: See LOCATION DRAWING for all visible improvements within 500' of Oil and Gas Location.
- 6) This map does not represent a boundary survey

NEAREST CULTURAL ITEMS	
BUILDING	±2163' NE
BUILDING UNIT	±2345' NE
HIGH OCCUPANCY BUILDING UNIT	±3306' NE
DESIGNATED OUTSIDE ACTIVITY AREA	5280'+
PUBLIC ROAD (COUNTY ROAD 46)	±278' S
ABOVE GROUND UTILITY	±257' S
RAILROAD	±5056' N
PROPERTY LINE	±285' S

- LEGEND
- = ALIQUOT MONUMENT AS DESCRIBED
 - = CALCULATED POSITION
 - = SURFACE HOLE LOCATION (SHL)
 - ▲ = ENTRY POINT LOCATION (EP)
 - BH = BOTTOM HOLE LOCATION (BHL)
 - ⊙ = EXISTING WELL
 - ⊙ = ABANDONED WELL



Brian T. Brinkman-On behalf of Lat40°, Inc.
Colorado Licensed Professional Land Surveyor No. 38175
DATE: 6/18/2015
PROJECT#: 2014159

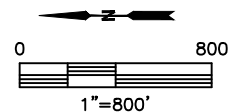
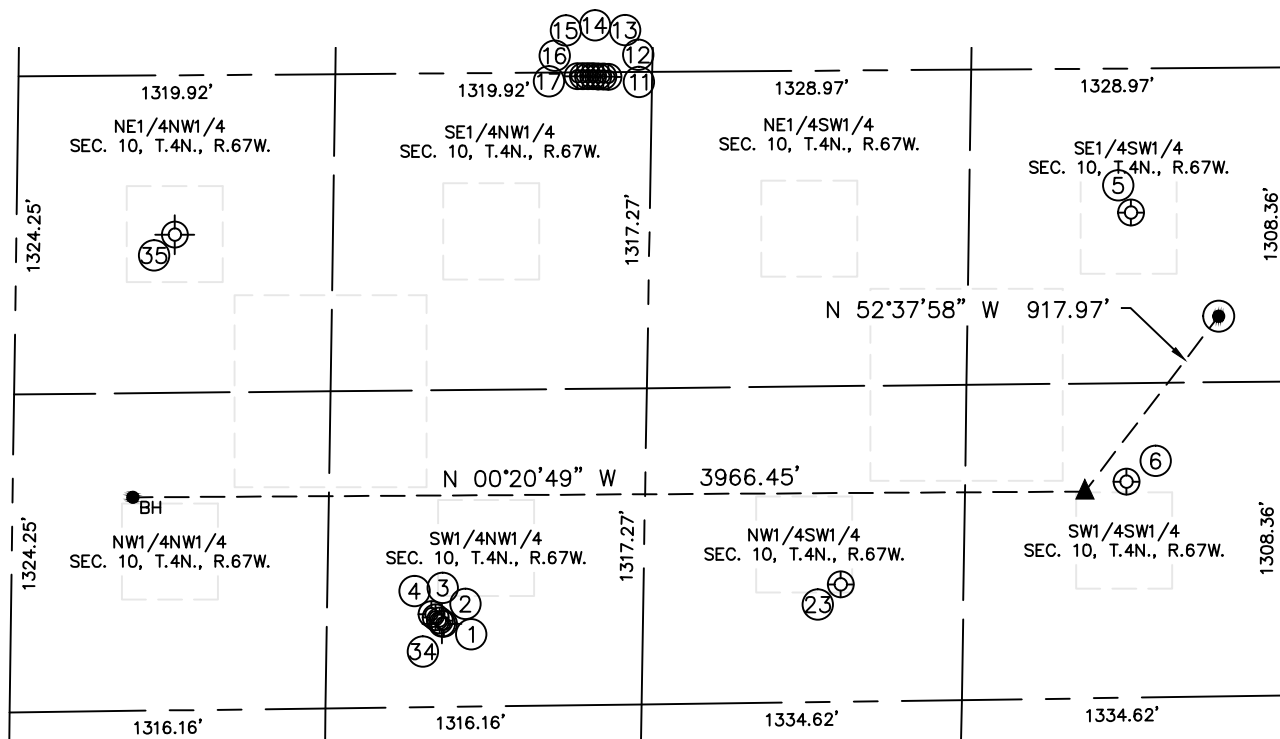


Lat40°, Inc. 6250 W. 10th St, Unit 2 Greeley, CO 970-515-5294

SITE SKETCH

SPAUR 10L-241

SECTION: 10
TOWNSHIP: 4N
RANGE: 67W
6TH P.M.
WELD COUNTY, CO



WELL NO.	WELL NAME	SHL FOOTAGE				SHL LAT°	SHL LONG°	PDOP	ELEV (FT.)	1/4/1/4
1	BINDER 11-10DU	1804	FNL	346	FWL	40.32929	-104.88536	1.7	4763	SWNW
2	BINDER 12-10DU	1786	FNL	360	FWL	40.32934	-104.88531	1.7	4763	SWNW
3	BINDER 10-ADU	1768	FNL	374	FWL	40.32938	-104.88526	2.4	4762	SWNW
4	BINDER 21-10DU	1751	FNL	387	FWL	40.32943	-104.88521	2.4	4763	SWNW
5	SPAR 10-2	656	FSL	2020	FWL	40.32140	-104.87929	2.0	4833	SESW
6	SPAR 10-3	660	FSL	900	FWL	40.32147	-104.88331	2.0	4824	SWSW
11	BINDER 10-OU	2457	FNL	2615	FWL	40.32736	-104.87721	3.1	4777	SENW
12	BINDER 10-SDU	2436	FNL	2616	FWL	40.32742	-104.87720	3.1	4777	SENW
13	BINDER 32-10DU	2414	FNL	2617	FWL	40.32748	-104.87720	3.1	4776	SENW
14	BINDER 10KDU	2393	FNL	2618	FWL	40.32754	-104.87720	3.1	4777	SENW
15	BINDER 22-10DU	2371	FNL	2619	FWL	40.32760	-104.87720	3.1	4776	SENW
16	BINDER 10-CDU	2350	FNL	2619	FWL	40.32766	-104.87720	3.7	4776	SENW
17	BINDER 10-NDU	2328	FNL	2619	FWL	40.32772	-104.87720	3.0	4777	SENW
23	SPAUR 10-1	1845	FSL	488	FWL	40.32475	-104.88481	2.8	4803	NWSW
34	BINDER 1	1796	FNL	346	FWL	40.32928	-104.88533	N/A	4761	SWNW
35	BINDER 2	660	FNL	1980	FWL	40.33219	-104.87819	N/A	4756	NENW

NOTE: THE ABANDONED WELL DATA SHOWN IN RED ABOVE WAS OBTAINED FROM COGCC SCOUT CARDS.

DATE: 6/18/2015
PROJECT#: 2014159