



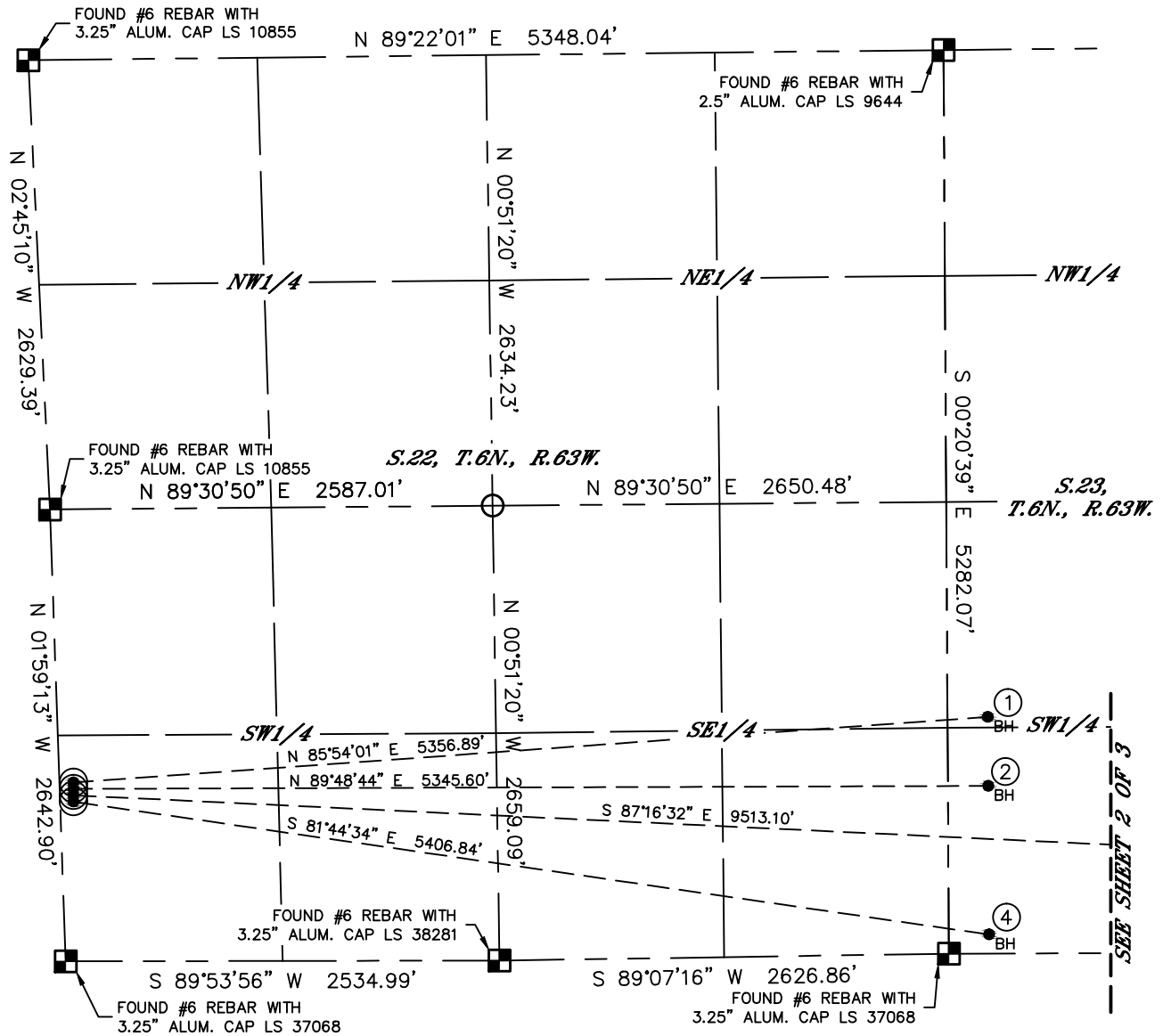
Lat40°, Inc. 6250 W. 10th Street, Unit 2, Greeley, CO 970-515-5294

MULTI-WELL PLAN

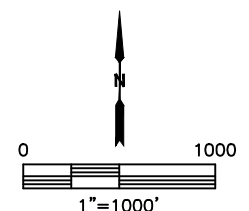
WELLS RANCH AA22-631 PAD

THIS MAP DOES NOT REPRESENT A BOUNDARY SURVEY

SECTION: 22
TOWNSHIP: 6N
RANGE: 63W
6TH. P.M.
WELD COUNTY, CO



#	WELL NAME	BHL FOOTAGE				BHL LAT °	BHL LONG °	BHL S-T-R
1	WELLS RANCH AA22-631	1383	FSL	235	FWL	40.46861	-104.41274	23-6-63
2	WELLS RANCH AA22-625	980	FSL	235	FWL	40.46751	-104.41275	23-6-63
3	WELLS RANCH AA22-617	447	FSL	907	FEL	40.46597	-104.39784	23-6-63
4	WELLS RANCH AA22-612	111	FSL	235	FWL	40.46512	-104.41277	23-6-63



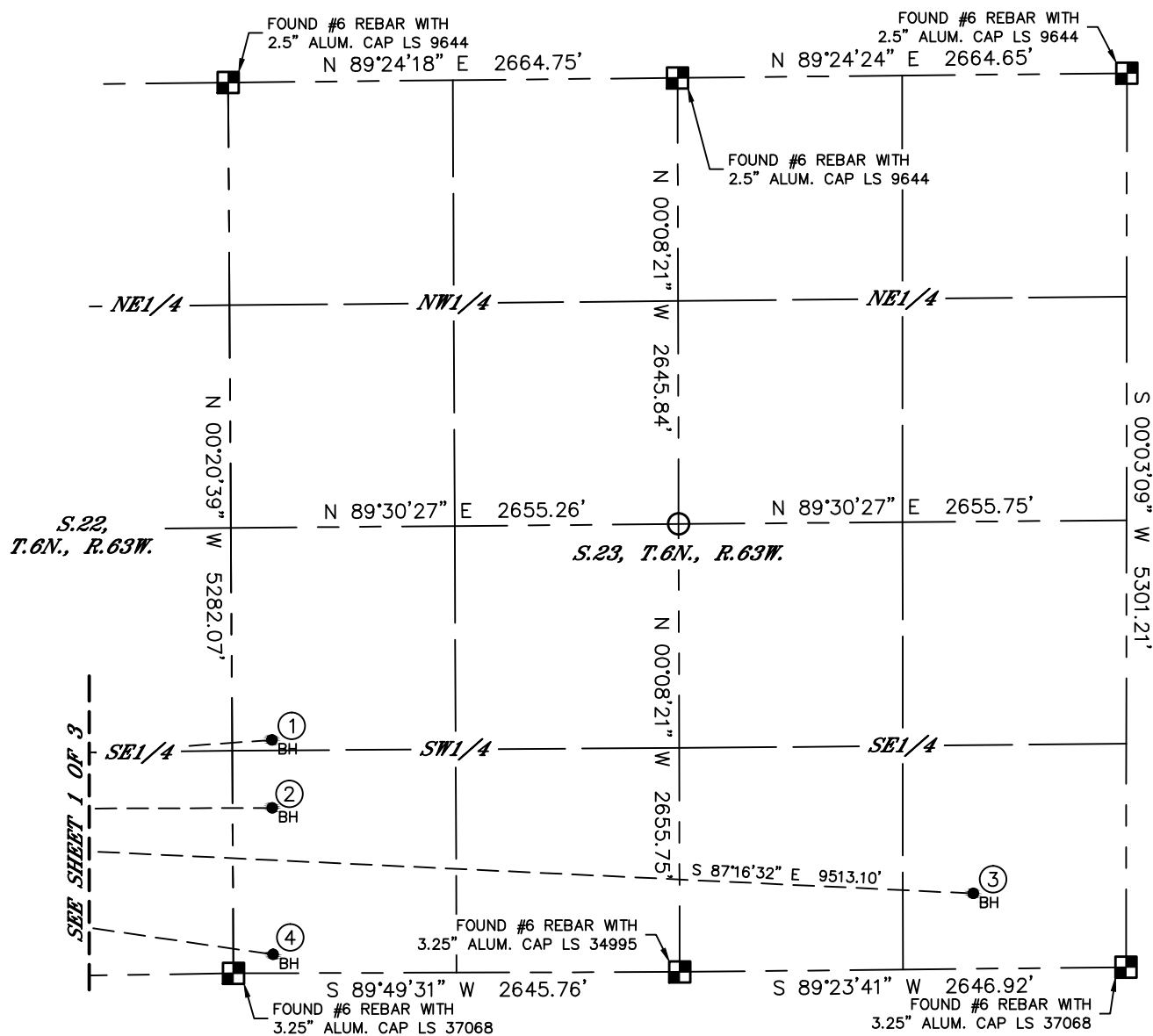
Lat40°, Inc. 6250 W. 10th Street, Unit 2, Greeley, CO 970-515-5294

MULTI-WELL PLAN

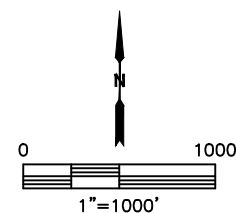
WELLS RANCH AA22-631 PAD

SECTION: 22
TOWNSHIP: 6N
RANGE: 63W
6TH. P.M.
WELD COUNTY, CO

THIS MAP DOES NOT REPRESENT A BOUNDARY SURVEY



#	WELL NAME	BHL FOOTAGE				BHL LAT °	BHL LONG °	BHL S-T-R
1	WELLS RANCH AA22-631	1383	FSL	235	FWL	40.46861	-104.41274	23-6-63
2	WELLS RANCH AA22-625	980	FSL	235	FWL	40.46751	-104.41275	23-6-63
3	WELLS RANCH AA22-617	447	FSL	907	FEL	40.46597	-104.39784	23-6-63
4	WELLS RANCH AA22-612	111	FSL	235	FWL	40.46512	-104.41277	23-6-63



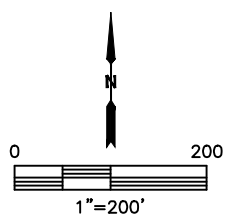


Lat40°, Inc. 6250 W. 10th Street, Unit 2, Greeley, CO 970-515-5294

MULTI-WELL PLAN

WELLS RANCH AA22-631 PAD

SECTION: 22
TOWNSHIP: 6N
RANGE: 63W
6TH. P.M.
WELD COUNTY, CO



DATE: 1/22/2015
PROJECT#: 2014014