



Lat40°, Inc. 6250 W. 10th Street, Unit 2, Greeley, CO 970-515-5294

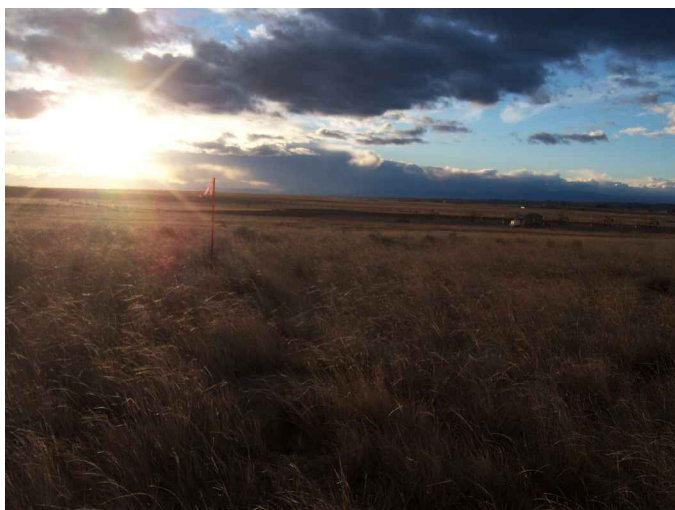
LOCATION PICTURES

WELLS RANCH AA22-631 PAD

SECTION: 22
TOWNSHIP: 6N
RANGE: 63W
6TH. P.M.
WELD COUNTY, CO
DATE: 11/24/2014



VIEW NORTH



VIEW WEST



VIEW EAST



VIEW SOUTH

DATE: 1/22/2015
PROJECT#: 2014014