

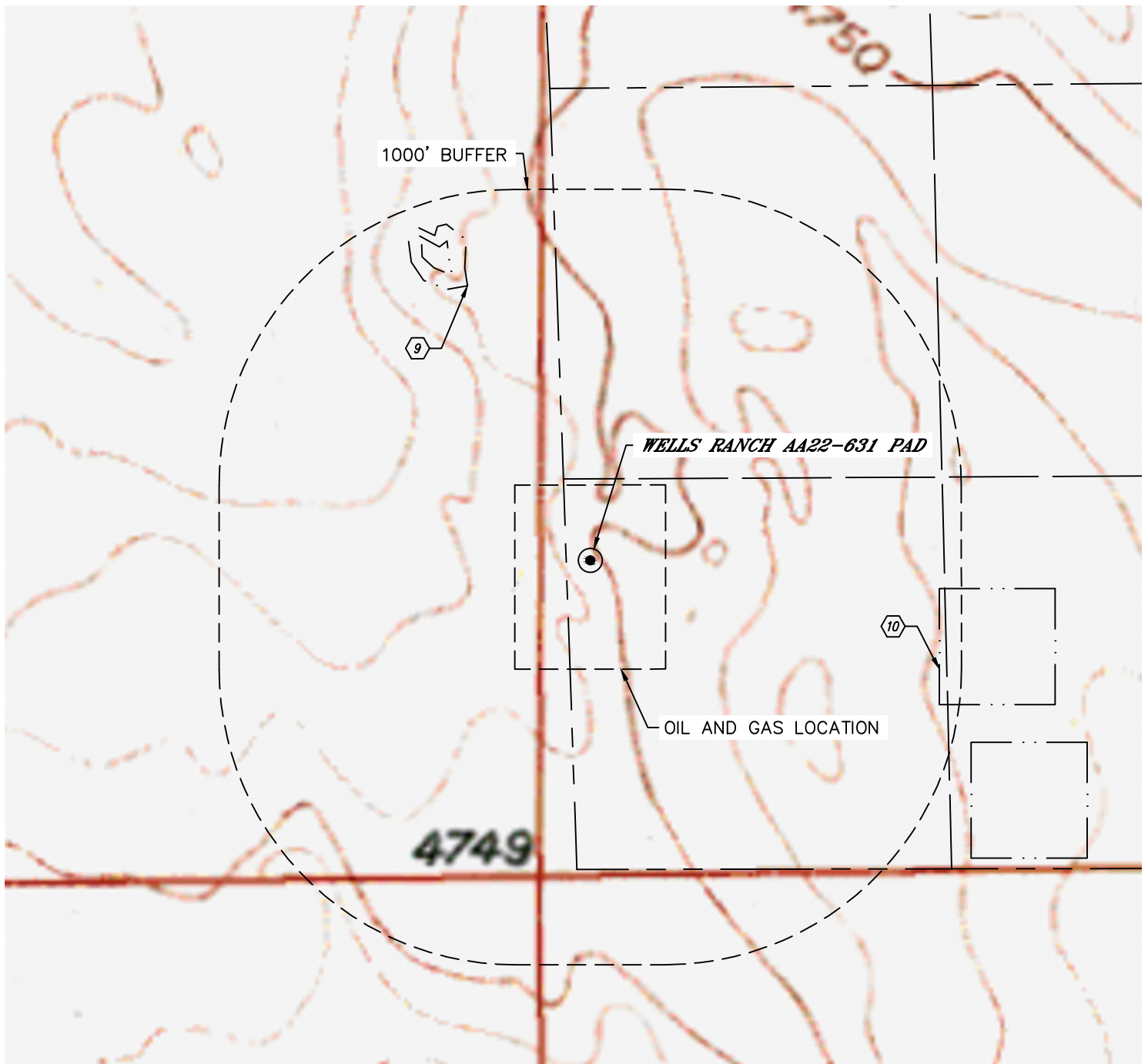


Lat40°, Inc. 6250 W. 10th Street, Unit 2, Greeley, CO 970-515-5294

HYDROLOGY MAP

WELLS RANCH AA22-631 PAD

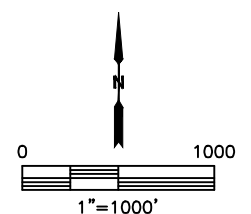
SECTION: 22
TOWNSHIP: 6N
RANGE: 63W
6TH. P.M.
WELD COUNTY, CO



DISTANCES MEASURED FROM THE EDGE OF THE OIL AND GAS LOCATION.

9 LOW AREA 692' NW

10 POND 925' E



DATE: 1/22/2015
PROJECT#: 2014014