

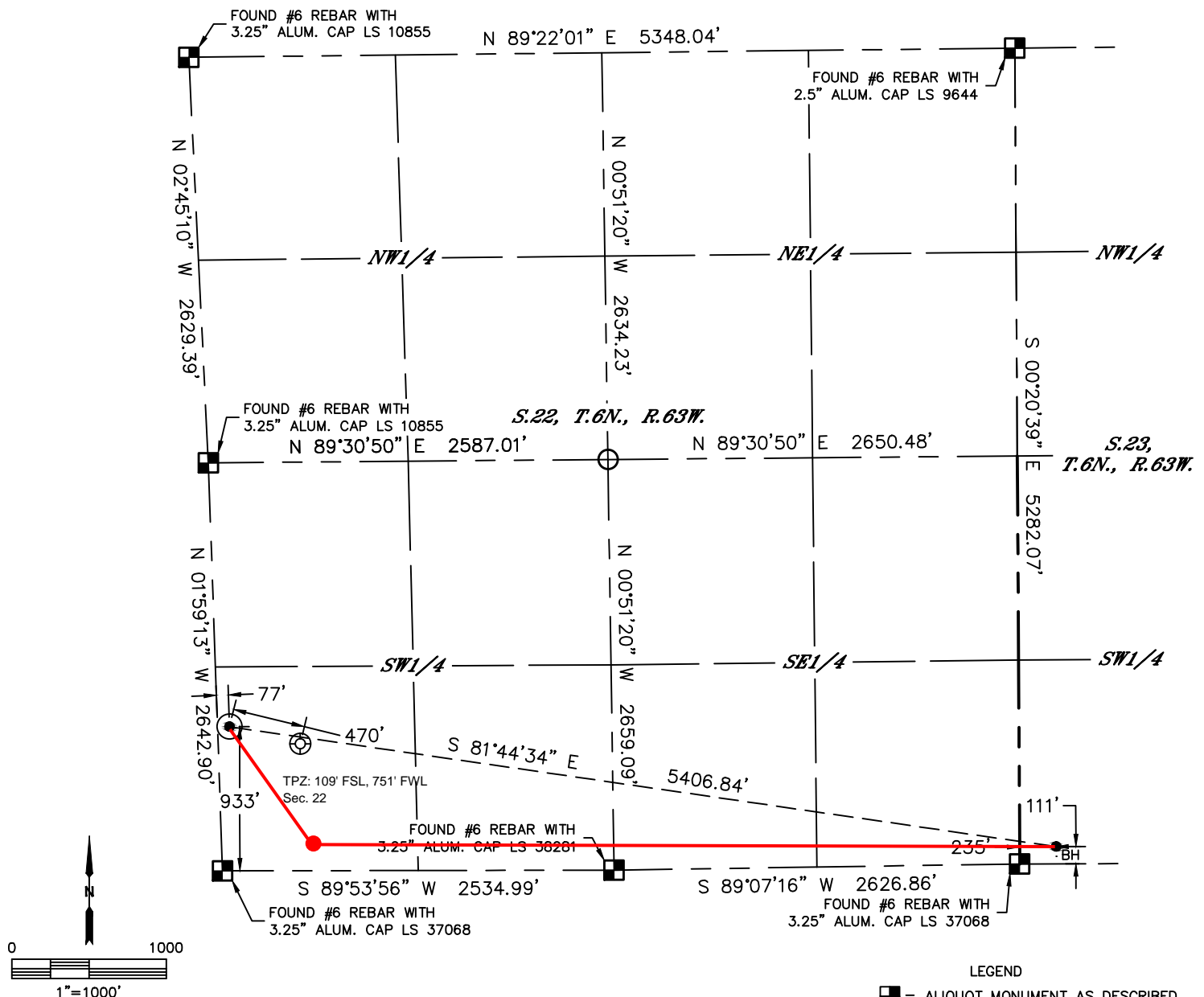


Lat40°, Inc. 6250 W. 10th Street, Unit 2, Greeley, CO 970-515-5294

WELL LOCATION CERTIFICATE

WELLS RANCH AA22-612

SECTION: 22
TOWNSHIP: 6N
RANGE: 63W
6TH. P.M.
WELD COUNTY, CO



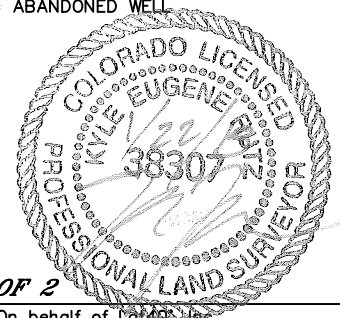
CLIENT: NOBLE ENERGY INC						LANDMAN: GREG WILSON			
INSTRUMENT OPERATOR: ADAM BEAUPREZ						SURVEY DATE: 11/25/14		SURFACE USE: RANGELAND	
SHL FOOTAGE			SHL LAT °		SHL LONG °	SHL PDOP	SHL ELEV	SHL 1/4/1/4	SHL S-T-R
933	FSL	77	FWL	40.46743	-104.43196	1.7	4745	SWSW	22-6-63

BHL FOOTAGE				BHL LAT °	BHL LONG °	BHL S-T-R
111	FSL	235	FWL	40.46512	-104.41277	23-6-63

NEAREST CULTURAL ITEMS	
EX. (WELLS RANCH PC AA22-13)	±470' SE
BUILDING	±1340' SE
BUILDING UNIT	±4372' NE
HIGH OCCUPANCY BUILDING UNIT	5280'+
DESIGNATED OUTSIDE ACTIVITY AREA	5280'+
PUBLIC ROAD (COUNTY ROAD 68)	±4325' N
ABOVE GROUND UTILITY	±4314' N
RAILROAD	5280'+
PROPERTY LINE	±77' W

NOTE:
1) Bearings shown are Grid Bearings of the Colorado State Plane Coordinate System, North Zone, North American Datum 1983. The lineal dimensions as contained herein are based upon the "U.S. Survey Foot."
2) Distances to section lines measured at 90 degrees from said section lines.
3) Ground elevations are based on an observed GPS elevation (NAVD 1988 DATUM).
4) Latitude and Longitude shown are (NAD 83 DATUM).
5) IMPROVEMENTS: See LOCATION DRAWING for all visible improvements within 500' of disturbed area.
6) This map does not represent a boundary survey.

- LEGEND
- = ALIQUOT MONUMENT AS DESCRIBED
 - = CALCULATED POSITION
 - = SURFACE HOLE LOCATION (SHL)
 - ▲ = ENTRY POINT LOCATION (EP)
 - BH = BOTTOM HOLE LOCATION (BHL)
 - ⊙ = EXISTING WELL
 - ⊙ = ABANDONED WELL



SHEET 1 OF 2

Kyle E. Rutz—On behalf of Lat40°, Inc.
Colorado Licensed Professional Land Surveyor No. 38307
DATE: 1/22/2015
PROJECT#: 2014014

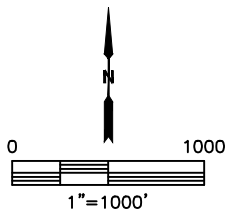
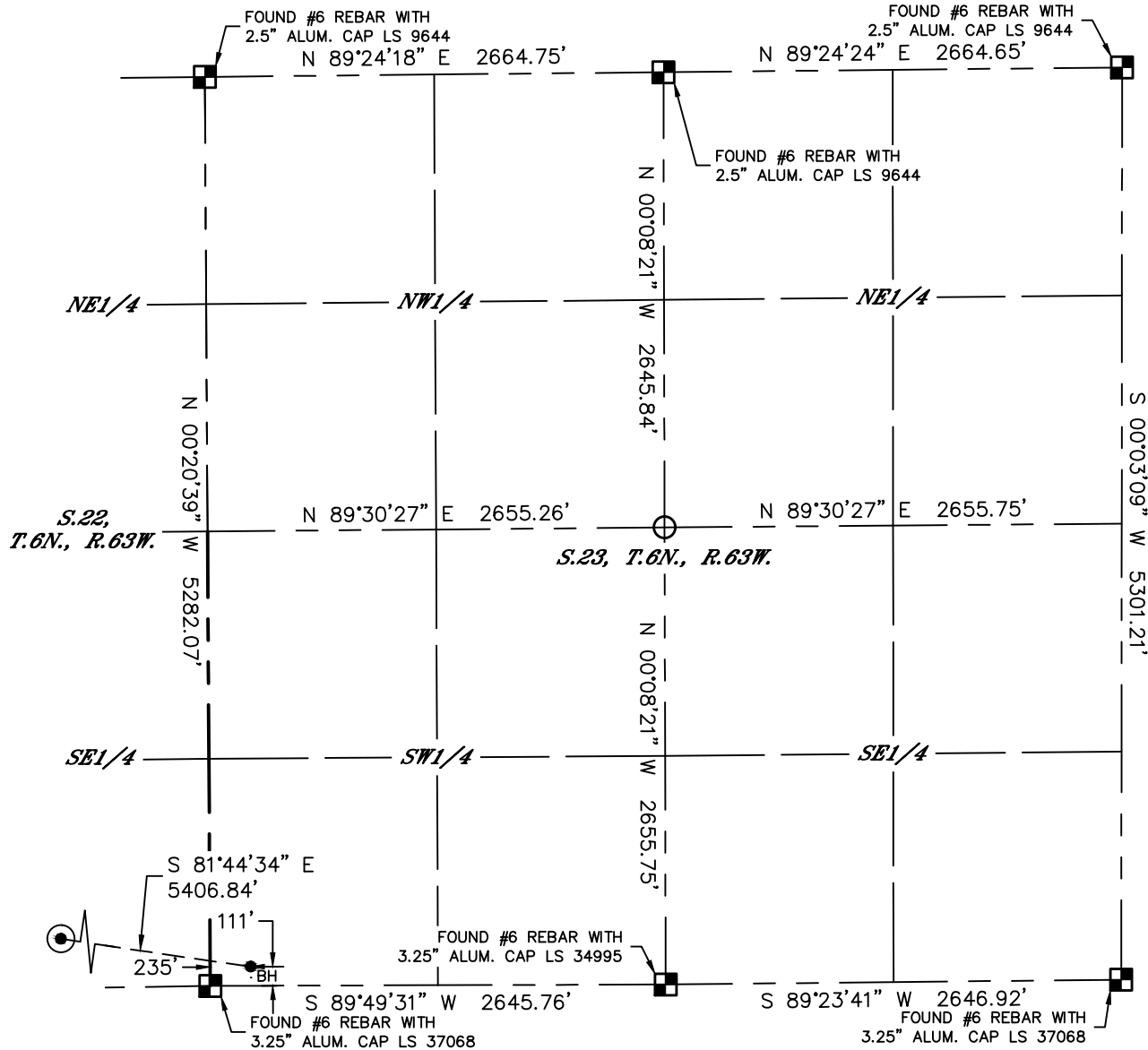


Lat40°, Inc. 6250 W. 10th Street, Unit 2, Greeley, CO 970-515-5294

WELL LOCATION CERTIFICATE

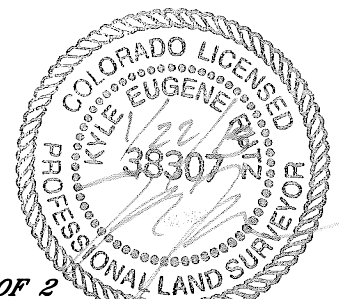
WELLS RANCH AA22-612

SECTION: 22
TOWNSHIP: 6N
RANGE: 63W
6TH. P.M.
WELD COUNTY, CO



LEGEND

- = ALIQUOT MONUMENT AS DESCRIBED
- = CALCULATED POSITION
- ⊙ = SURFACE HOLE LOCATION (SHL)
- ▲ = ENTRY POINT LOCATION (EP)
- = BOTTOM HOLE LOCATION (BHL)
- ⊕ = EXISTING WELL
- ⊗ = ABANDONED WELL



SHEET 2 OF 2

Kyle E. Rutz—On behalf of Lat40°, Inc.
Colorado Licensed Professional Land Surveyor No. 38307
DATE: 1/22/2015
PROJECT#: 2014014

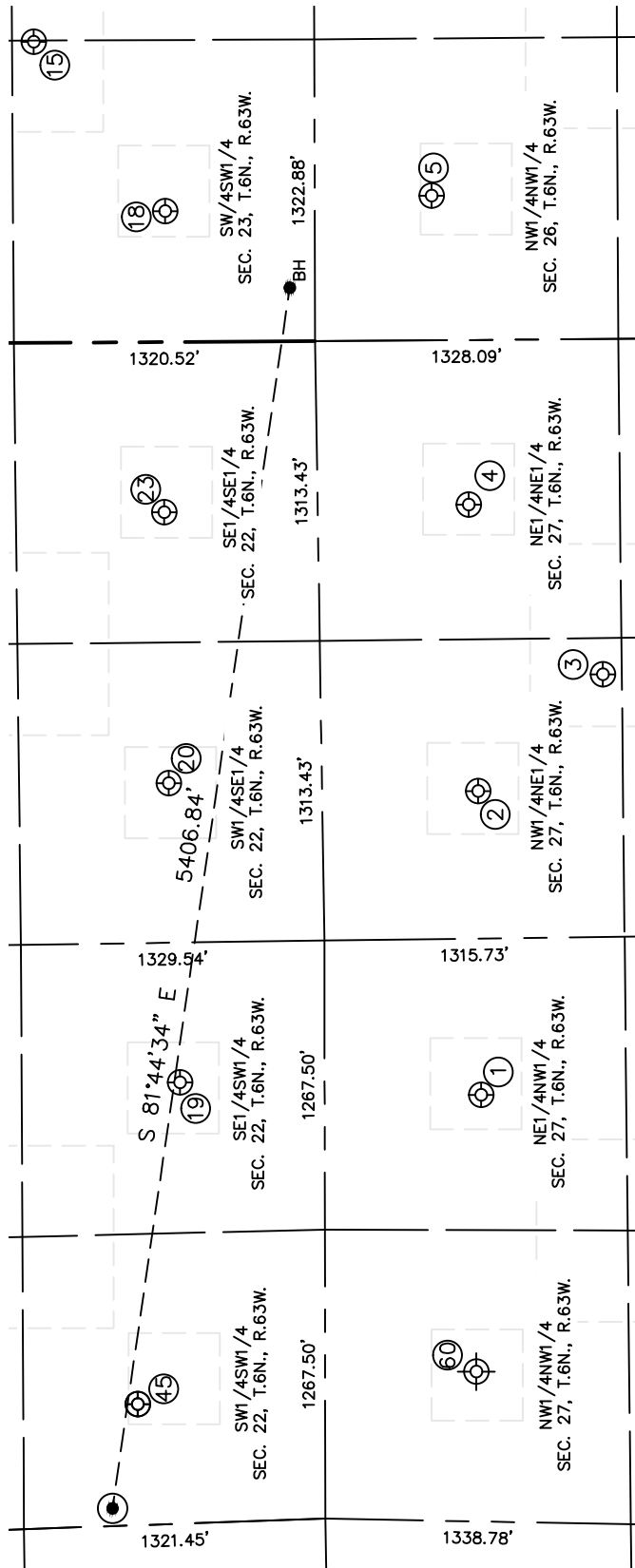


Lat40°, Inc. 6250 W. 10th Street, Unit 2, Greeley, CO 970-515-5294

SITE SKETCH

WELLS RANCH AA22-612

SECTION: 22
TOWNSHIP: 6N
RANGE: 63W
6TH. P.M.
WELD COUNTY, CO



WELL NO.	WELL NAME	SHL FOOTAGE				SHL LAT°	SHL LONG°	PDOP	ELEV (FT.)	1/4/1/4
1	WELLS RANCH USX AA 27-3	686	FNL	1870	FWL	40.46294	-104.42551	2.2	4785	NENW
2	WELLS RANCH USX AA 27-2	683	FNL	1978	FEL	40.46293	-104.42073	2.7	4795	NWNE
3	WELLS RANCH USXAA 27-17	1238	FNL	1470	FEL	40.46141	-104.41892	2.0	4799	NWNE
4	WELLS RANCH USX AA 27-01	661	FNL	721	FEL	40.46300	-104.41622	2.6	4802	NENE
5	WELLS RANCH AA 26-04	512	FNL	634	FWL	40.46340	-104.41134	2.5	4823	NWNNW
15	WELLS RANCH USX AA 23-25	1229	FSL	1319	FWL	40.46816	-104.40885	2.5	4807	SWSW
18	WELLS RANCH USX AA 23-13	656	FSL	573	FWL	40.46661	-104.41154	1.6	4812	SWSW
19	WELLS RANCH 24-22	634	FSL	1934	FWL	40.46656	-104.42526	1.7	4779	SESW
20	WELLS RANCH 34-22	672	FSL	1934	FEL	40.46665	-104.42055	1.8	4773	SWSE
23	WELLS RANCH 44-22	674	FSL	745	FEL	40.46666	-104.41628	2.2	4785	SESE
45	WELLS RANCH PC AA22-13	821	FSL	531	FWL	40.46711	-104.43032	1.7	4757	SWSW
60	UPV 27-4G3	663	FNL	657	FWL	40.46306	-104.43014	N/A	4746	NWNNW

NOTE: THE ABANDONED WELL DATA SHOWN IN RED ABOVE WAS OBTAINED FROM COGCC SCOUT CARDS.



DATE: 1/22/2015
PROJECT#: 2014014