

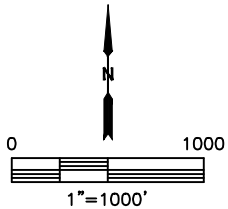
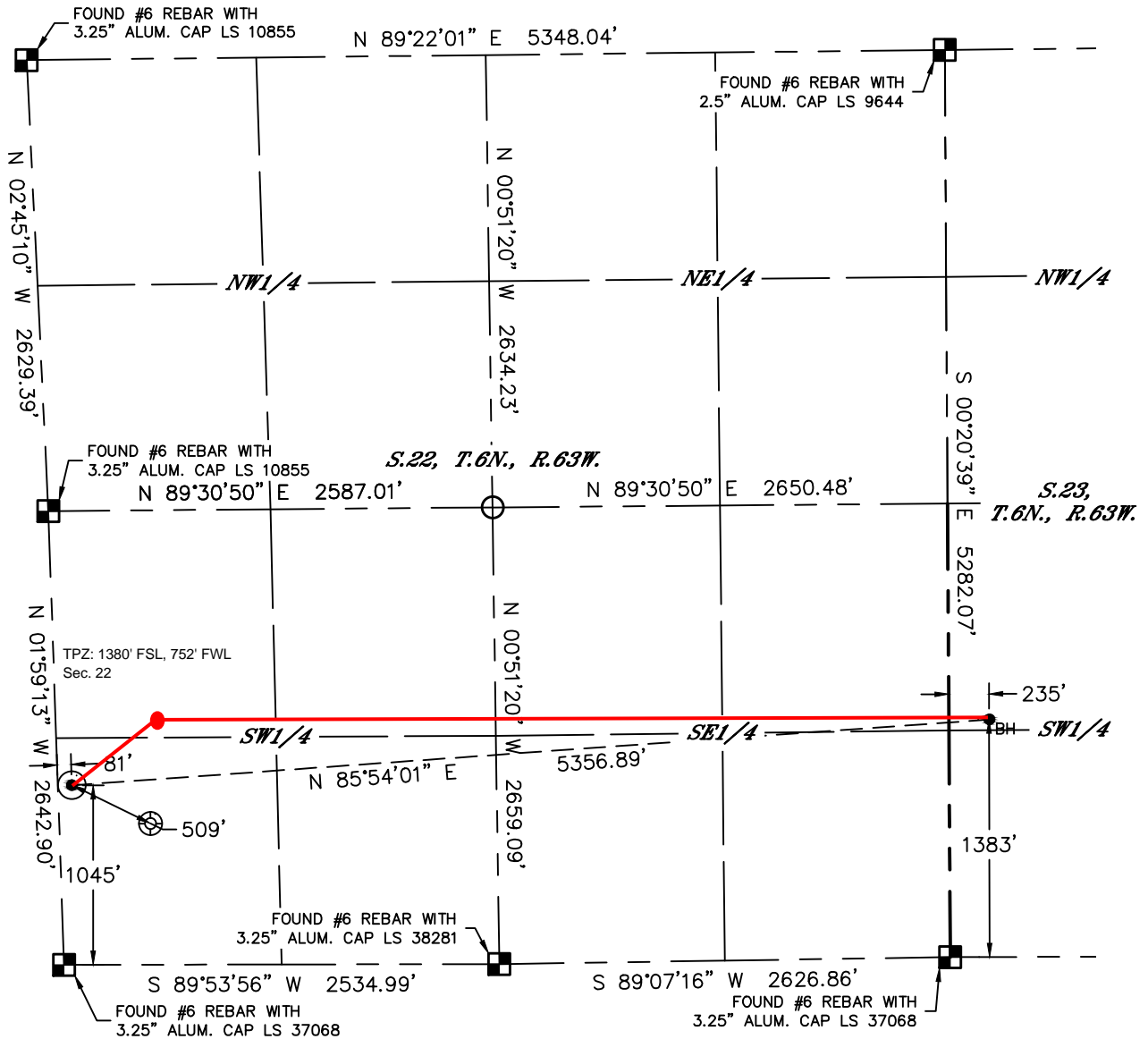


Lat40°, Inc. 6250 W. 10th Street, Unit 2, Greeley, CO 970-515-5294

# WELL LOCATION CERTIFICATE

WELLS RANCH AA22-631

SECTION: 22  
TOWNSHIP: 6N  
RANGE: 63W  
6TH. P.M.  
WELD COUNTY, CO



- LEGEND**
- = ALIQUOT MONUMENT AS DESCRIBED
  - = CALCULATED POSITION
  - = SURFACE HOLE LOCATION (SHL)
  - ▲ = ENTRY POINT LOCATION (EP)
  - <sub>BH</sub> = BOTTOM HOLE LOCATION (BHL)
  - ⊕ = EXISTING WELL
  - ⊙ = ABANDONED WELL

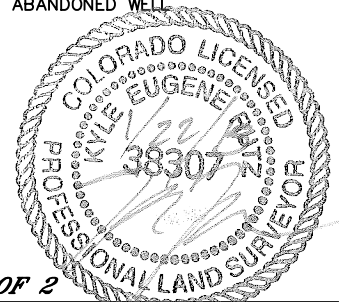
CLIENT: NOBLE ENERGY INC				LANDMAN: GREG WILSON			
INSTRUMENT OPERATOR: ADAM BEAUPREZ				SURVEY DATE: 11/25/14		SURFACE USE: RANGELAND	
SHL FOOTAGE	SHL LAT°	SHL LONG°	SHL PDOP	SHL ELEV	SHL 1/4/1/4	SHL S-T-R	
1045	FSL 81 FWL	40.46774	-104.43195	1.7	4745	SWSW 22-6-63	

BHL FOOTAGE	BHL LAT°	BHL LONG°	BHL S-T-R
1383	FSL 235 FWL	40.46861	-104.41274 23-6-63

NEAREST CULTURAL ITEMS	
EX. (WELLS RANCH PC AA22-13)	±509' SE
BUILDING	±1436' SE
BUILDING UNIT	±4267' NE
HIGH OCCUPANCY BUILDING UNIT	5280'+
DESIGNATED OUTSIDE ACTIVITY AREA	5280'+
PUBLIC ROAD (COUNTY ROAD 68)	±4213' N
ABOVE GROUND UTILITY	±4201' N
RAILROAD	5280'+
PROPERTY LINE	±81' W

**NOTE:**

- Bearings shown are Grid Bearings of the Colorado State Plane Coordinate System, North Zone, North American Datum 1983. The lineal dimensions as contained herein are based upon the "U.S. Survey Foot."
- Distances to section lines measured at 90 degrees from said section lines.
- Ground elevations are based on an observed GPS elevation (NAVD 1988 DATUM).
- Latitude and Longitude shown are (NAD 83 DATUM).
- IMPROVEMENTS: See LOCATION DRAWING for all visible improvements within 500' of disturbed area.
- This map does not represent a boundary survey.



**SHEET 1 OF 2**

Kyle E. Rutz—On behalf of Lat40°, Inc.  
Colorado Licensed Professional Land Surveyor No. 38307  
DATE: 1/22/2015  
PROJECT#: 2014014

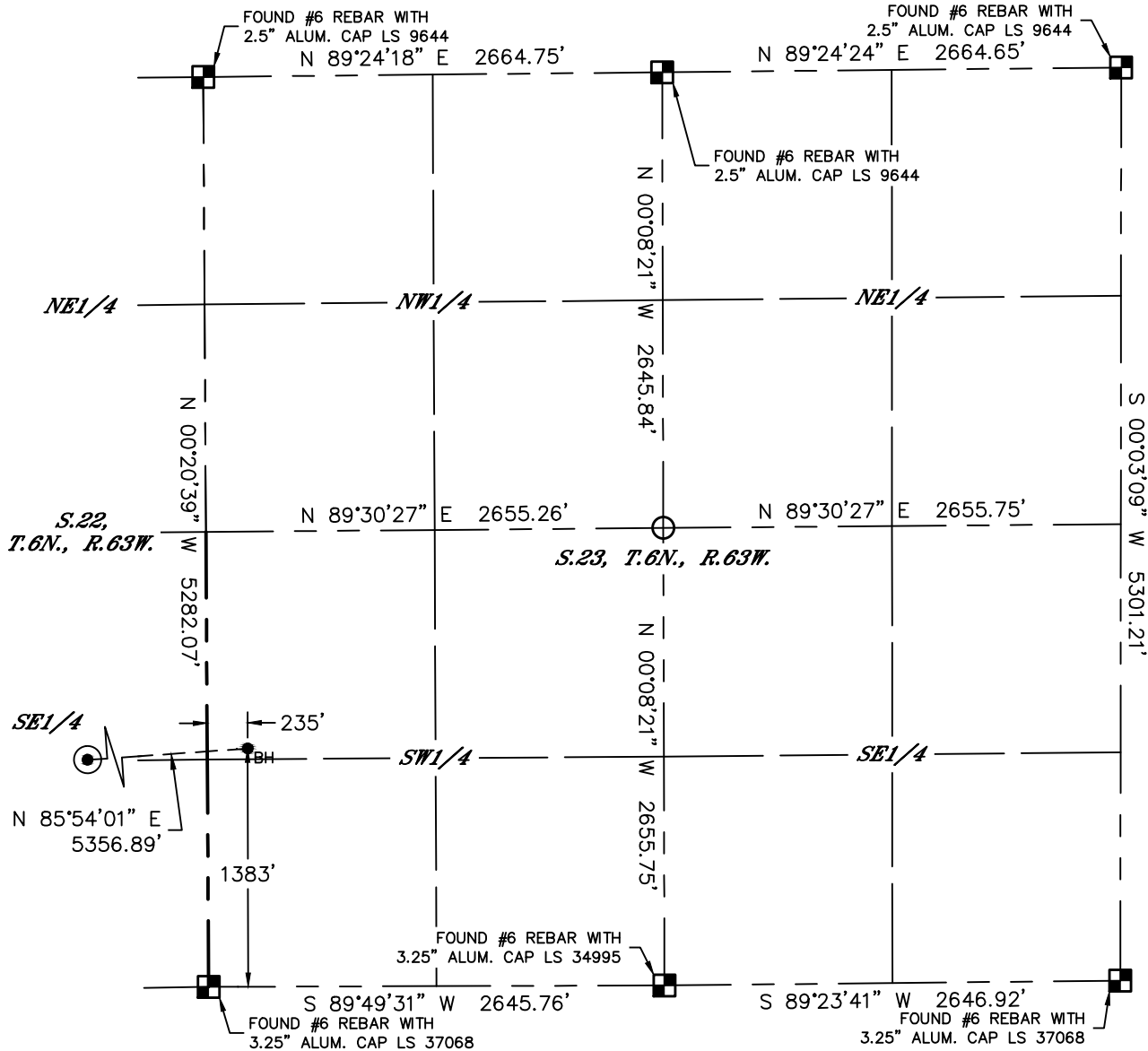


Lat40°, Inc. 6250 W. 10th Street, Unit 2, Greeley, CO 970-515-5294

# WELL LOCATION CERTIFICATE

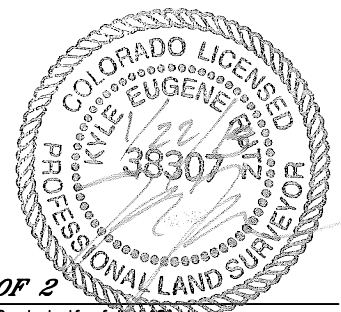
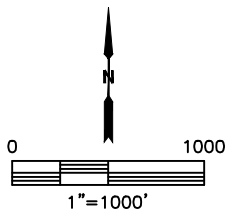
WELLS RANCH AA22-631

SECTION: 22  
TOWNSHIP: 6N  
RANGE: 63W  
6TH. P.M.  
WELD COUNTY, CO



### LEGEND

- = ALIQUOT MONUMENT AS DESCRIBED
- = CALCULATED POSITION
- = SURFACE HOLE LOCATION (SHL)
- = ENTRY POINT LOCATION (EP)
- = BOTTOM HOLE LOCATION (BHL)
- = EXISTING WELL
- = ABANDONED WELL



**SHEET 2 OF 2**

Kyle E. Rutz—On behalf of Lat40°, Inc.  
Colorado Licensed Professional Land Surveyor No. 38307  
DATE: 1/22/2015  
PROJECT#: 2014014

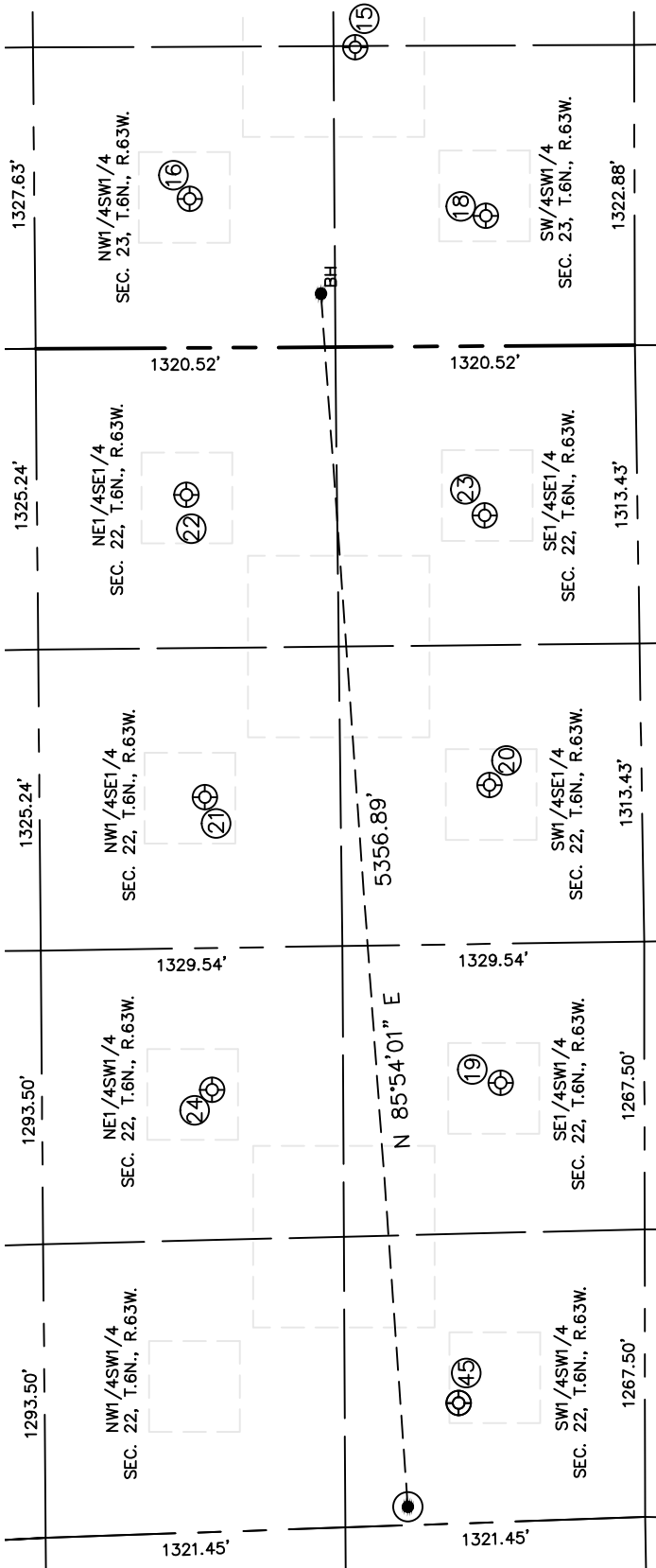


Lat40°, Inc. 6250 W. 10th Street, Unit 2, Greeley, CO 970-515-5294

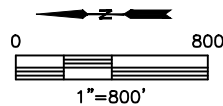
# SITE SKETCH

## WELLS RANCH AA22-631

SECTION: 22  
TOWNSHIP: 6N  
RANGE: 63W  
6TH. P.M.  
WELD COUNTY, CO



WELL NO.	WELL NAME	SHL FOOTAGE			SHL LAT°	SHL LONG°	PDOP	ELEV (FT.)	1/4/1/4
		FSL	FSL	FWL					
15	WELLS RANCH USX AA 23-25	1229	1319	FWL	40.46816	-104.40885	2.5	4807	SWSW
16	WELLS RANCH USX AA 23-12	1960	656	FWL	40.47019	-104.41121	1.6	4799	NWSW
18	WELLS RANCH USX AA 23-13	656	573	FWL	40.46661	-104.41154	1.6	4812	SWSW
19	WELLS RANCH 24-22	634	1934	FWL	40.46656	-104.42526	1.7	4779	SESW
20	WELLS RANCH 34-22	672	1934	FEL	40.46665	-104.42055	1.8	4773	SWSE
21	WELLS RANCH 33-22	1926	1979	FEL	40.47009	-104.42068	1.9	4758	NWSE
22	WELLS RANCH 43-22	1986	647	FEL	40.47027	-104.41590	2.3	4794	NESE
23	WELLS RANCH 44-22	674	745	FEL	40.46666	-104.41628	2.2	4785	SESE
24	WELLS RANCH 23-22	1906	1946	FWL	40.47005	-104.42532	2.0	4765	NESW
45	WELLS RANCH PC AA22-13	821	531	FWL	40.46711	-104.43032	1.7	4757	SWSW



DATE: 1/22/2015  
PROJECT#: 2014014