



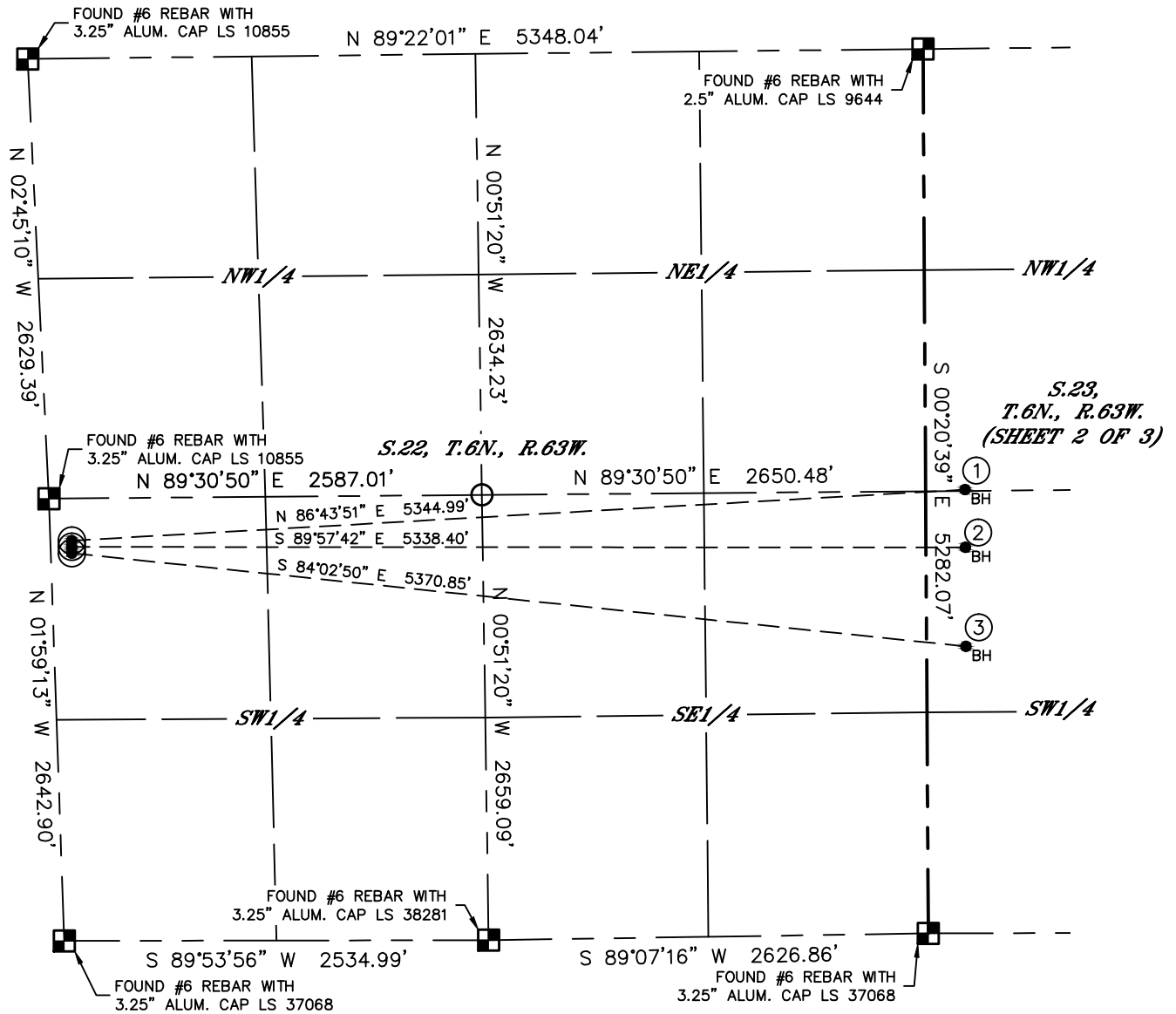
Lat40°, Inc. 6250 W. 10th Street, Unit 2, Greeley, CO 970-515-5294

MULTI-WELL PLAN

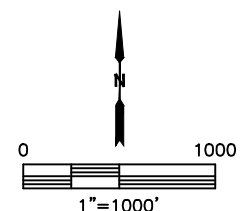
WELLS RANCH AA22-650 PAD

THIS MAP DOES NOT REPRESENT A BOUNDARY SURVEY

SECTION: 22
TOWNSHIP: 6N
RANGE: 63W
6TH. P.M.
WELD COUNTY, CO



#	WELL NAME	BHL FOOTAGE				BHL LAT °	BHL LONG °	BHL S-T-R
1	WELLS RANCH AA22-650	2634	FNL	235	FWL	40.47209	-104.41271	23-6-63
2	WELLS RANCH AA22-645	2304	FSL	235	FWL	40.47114	-104.41272	23-6-63
3	WELLS RANCH AA22-636	1713	FSL	235	FWL	40.46952	-104.41273	23-6-63





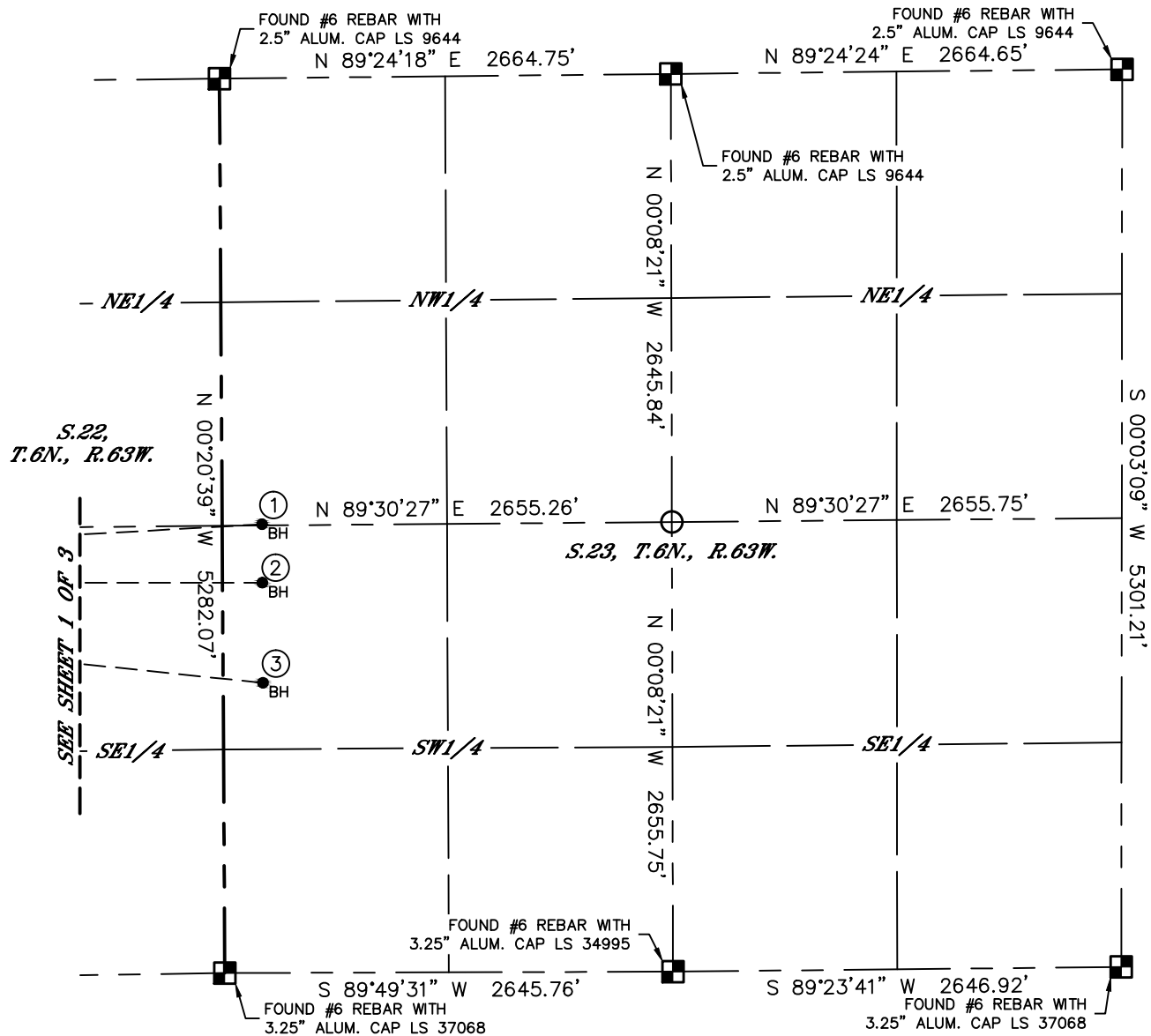
Lat40°, Inc. 6250 W. 10th Street, Unit 2, Greeley, CO 970-515-5294

MULTI-WELL PLAN

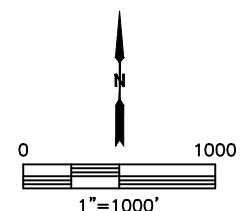
WELLS RANCH AA22-650 PAD

SECTION: 22
TOWNSHIP: 6N
RANGE: 63W
6TH. P.M.
WELD COUNTY, CO

THIS MAP DOES NOT REPRESENT A BOUNDARY SURVEY



#	WELL NAME	BHL FOOTAGE				BHL LAT °	BHL LONG °	BHL S-T-R
1	WELLS RANCH AA22-650	2634	FNL	235	FWL	40.47209	-104.41271	23-6-63
2	WELLS RANCH AA22-645	2304	FSL	235	FWL	40.47114	-104.41272	23-6-63
3	WELLS RANCH AA22-636	1713	FSL	235	FWL	40.46952	-104.41273	23-6-63



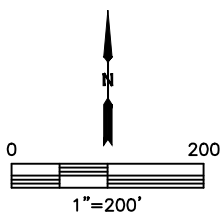


Lat40°, Inc. 6250 W. 10th Street, Unit 2, Greeley, CO 970-515-5294

MULTI-WELL PLAN

WELLS RANCH AA22-650 PAD

SECTION: 22
TOWNSHIP: 6N
RANGE: 63W
6TH. P.M.
WELD COUNTY, CO



DATE: 1/22/2015
PROJECT#: 2014014