

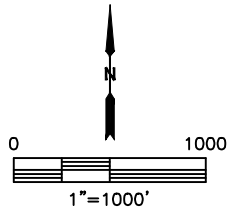
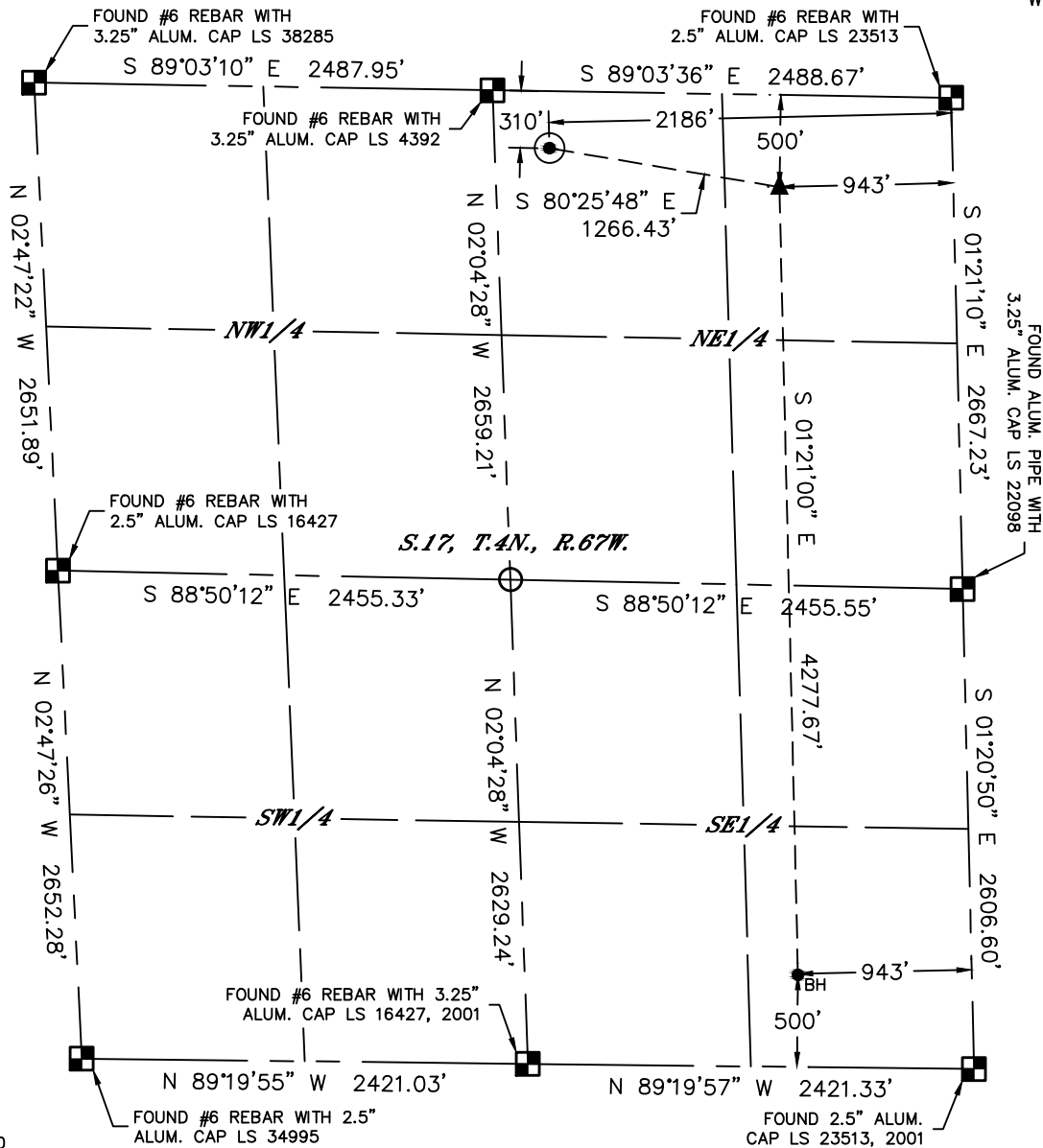


Lat40°, Inc. 6250 W. 10th Street, Unit 2, Greeley, CO 970-515-5294

# WELL LOCATION CERTIFICATE

LAJCO 17R-223

SECTION: 17  
TOWNSHIP: 4N  
RANGE: 67W  
6TH. P.M.  
WELD COUNTY, CO



CLIENT: PDC ENERGY				LANDMAN: MAC NEUMANN			
INSTRUMENT OPERATOR: BRIAN ROTTINGHAUS				SURVEY DATE: 6/9/2015			
				SURFACE USE: CROP LAND			
SHL FOOTAGE	SHL LAT °	SHL LONG °	SHL PDOP	SHL ELEV (FT.)	SHL 1/4/1/4	SHL S-T-R	
310 FNL 2186 FEL	40.31941	-104.91381	1.5	4794	NWNE	17-4-67	

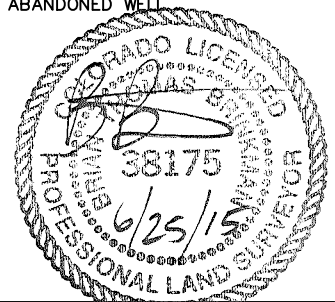
BHL FOOTAGE	BHL LAT °	BHL LONG °	BHL S-T-R	EP LAT °	EP LONG °	EP S-T-R
500 FSL 943 FEL	40.30707	-104.90908	17-4-67	40.31881	-104.90933	17-4-67

NOTE:

- 1) Bearings shown are Grid Bearings of the Colorado State Plane Coordinate System, North Zone, North American Datum 1983. The lineal dimensions as contained herein are based upon the "U.S. Survey Foot."
- 2) Distances to section lines measured at 90 degrees from said section lines.
- 3) Ground elevations are based on an observed GPS elevation (NAVD 1988 DATUM).
- 4) Latitude and Longitude shown are (NAD 83 DATUM).
- 5) IMPROVEMENTS: See LOCATION DRAWING for all visible improvements within 500' of oil and gas location.
- 6) This map does not represent a boundary survey.

NEAREST CULTURAL ITEMS	
BUILDING	±1832' NE
BUILDING UNIT	±1919' NW
HIGH OCCUPANCY BUILDING UNIT	±4009' SE
DESIGNATED OUTSIDE ACTIVITY AREA	5280'+
PUBLIC ROAD (COUNTY ROAD 46)	±298' N
ABOVE GROUND UTILITY	±280' N
RAILROAD	±2471' SE
PROPERTY LINE	±200' W

- LEGEND
- = ALIQUOT MONUMENT AS DESCRIBED
  - = CALCULATED POSITION
  - = SURFACE HOLE LOCATION (SHL)
  - ▲ = ENTRY POINT LOCATION (EP)
  - BH = BOTTOM HOLE LOCATION (BHL)
  - ⊕ = EXISTING WELL
  - ⊕ = ABANDONED WELL



Brian T. Brinkman—On behalf of Lat40°, Inc.  
Colorado Licensed Professional Land Surveyor No. 38175  
DATE: 6/25/2015  
PROJECT#: 2014134

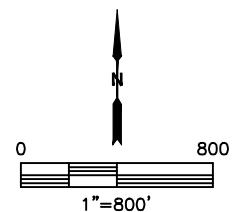
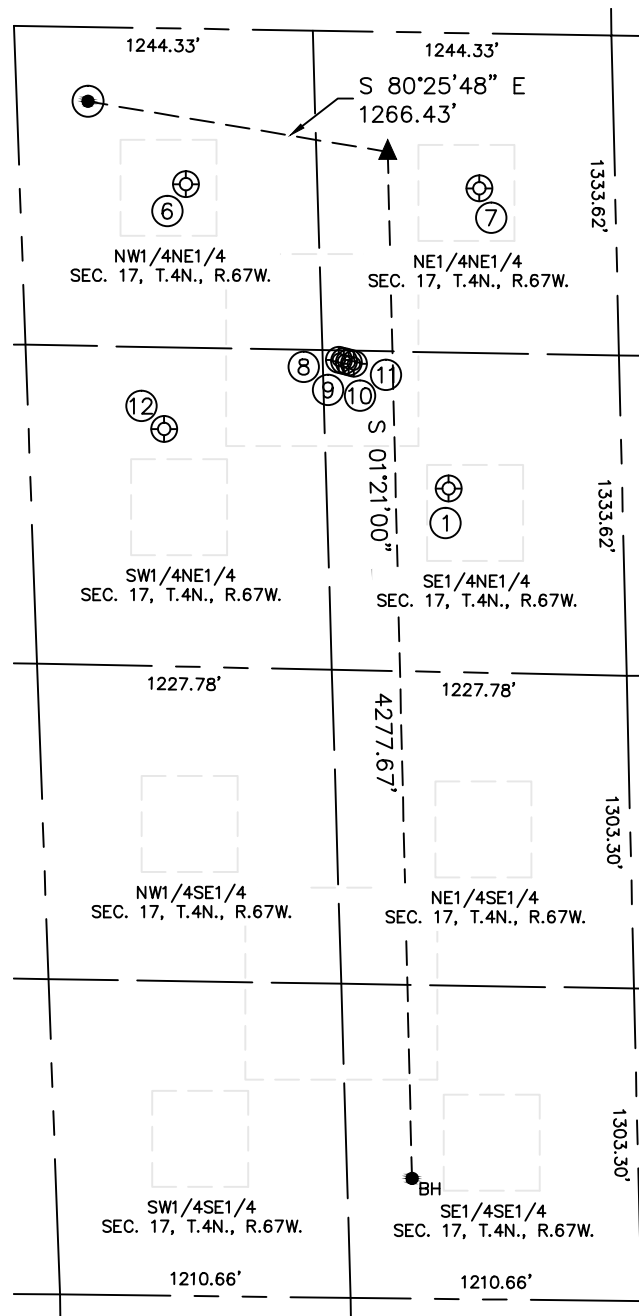


Lat40°, Inc. 6250 W. 10th Street, Unit 2, Greeley, CO 970-515-5294

# SITE SKETCH

LAJCO 17R-223

SECTION: 17  
TOWNSHIP: 4N  
RANGE: 67W  
6TH. P.M.  
WELD COUNTY, CO



WELL NO.	WELL NAME	SHL FOOTAGE				SHL LAT°	SHL LONG°	PDOP	ELEV (FT.)	1/4/1/4
1	COMING 17-3	1898	FNL	724	FEL	40.31495	-104.90846	1.8	4809	SENE
6	COMING 17-1	648	FNL	1787	FEL	40.31845	-104.91235	2.3	4792	NWNE
7	COMING 17-2	646	FNL	656	FEL	40.31838	-104.90797	1.4	4787	NENE
8	LAJCO 17ND	1370	FNL	1167	FEL	40.31643	-104.91009	2.2	4789	SENE
9	LAJCO 17C	1375	FNL	1147	FEL	40.31642	-104.91001	2.7	4790	SENE
10	LAJCO 17RD	1380	FNL	1126	FEL	40.31640	-104.90994	1.9	4790	SENE
11	LAJCO 17SD	1385	FNL	1105	FEL	40.31639	-104.90986	1.9	4790	SENE
12	COMING 17-4	1670	FNL	1901	FEL	40.31566	-104.91270	1.9	4794	SWNE

DATE: 6/25/2015  
PROJECT#: 2014134