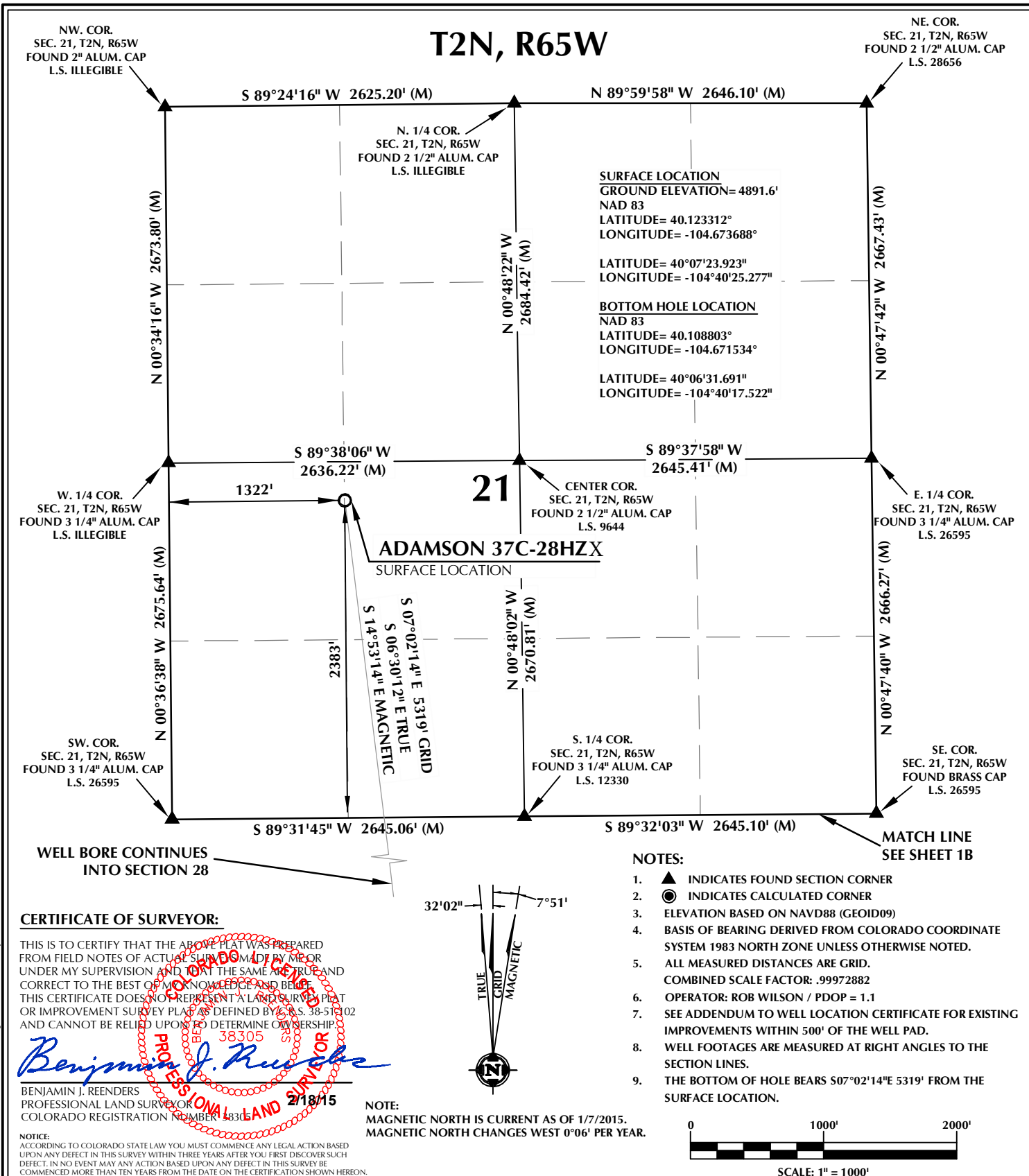


K:\ADARKO\2014\2014.107\_ADMSON SEC. 21, T2N, R65W\PLATS\ADAMSON 22N-28HZ PLAT.dwg, 2/27/2015, 3:36:25 PM, jake



**WELL PAD - ADAMSON 14N-28HZ**

ADAMSON 37C-28HZ X  
WELL LOCATION CERTIFICATE  
2383' FSL & 1322' FWL NESW (SURFACE)  
LOCATED IN SECTION 21  
2381' FSL & 1908' FWL NESW (BOTTOM)  
LOCATED IN SECTION 28  
T2N, R65W, 6TH P.M.  
WELD COUNTY, COLORADO

**Kerr-McGee Oil &  
Gas Onshore L.P.**  
1099 18th Street  
Denver, Colorado 80202



**CONSULTING, LLC**

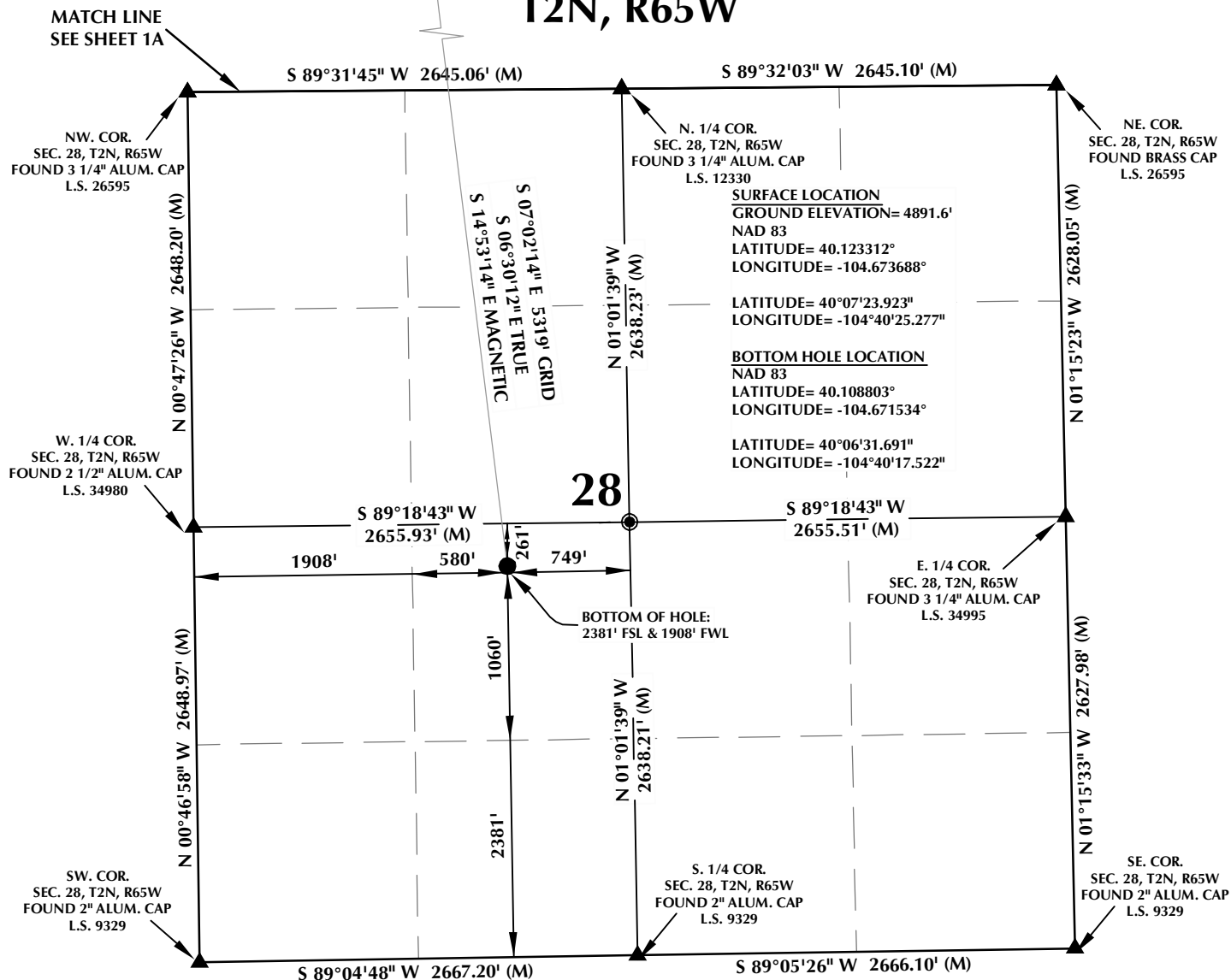
SHERIDAN OFFICE  
1095 Saberton Avenue  
Sheridan, Wyoming 82801  
Phone 307-674-0609

LOVELAND OFFICE  
1635 Foxtrail Drive, Suite 204  
Loveland, Colorado 80538  
Phone 970-776-4331

DRAFTED BY:	MDZ	CHECKED BY:	BJR	SHEET NO:
DATE DRAFTED:	2/18/15	DATE SURVEYED:	12/5/14	<b>1A</b>
REVISED:		FILE NAME:	14-107	1A OF 1

K:\ADAMSON\2014\2014\_107\_ADAMSON\_SEC\_21\_T2N\_R65W\PLATS\ADAMSON\_22N-28HZ\_PLAT.dwg, 2/27/2015, 3:36:50 PM, jake

T2N, R65W



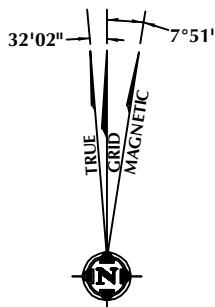
#### CERTIFICATE OF SURVEYOR:

THIS IS TO CERTIFY THAT THE ABOVE PLAT WAS PREPARED FROM FIELD NOTES OF ACTUAL SURVEY MADE BY ME OR UNDER MY SUPERVISION AND THAT THE SAME ARE TRUE AND CORRECT TO THE BEST OF MY KNOWLEDGE AND BELIEF. THIS CERTIFICATE DOES NOT REPRESENT A LAND SURVEY PLAT OR IMPROVEMENT SURVEY PLAT AS DEFINED BY C.S. 38-51-102 AND CANNOT BE RELIED UPON TO DETERMINE OWNERSHIP.

*Benjamin J. Reenders*  
PROFESSIONAL LAND SURVEYOR

BENJAMIN J. REENDERS  
PROFESSIONAL LAND SURVEYOR  
COLORADO REGISTRATION NUMBER 14336

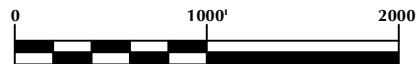
NOTICE:  
ACCORDING TO COLORADO STATE LAW YOU MUST COMMENCE ANY LEGAL ACTION BASED UPON ANY DEFECT IN THIS SURVEY WITHIN THREE YEARS AFTER YOU FIRST DISCOVER SUCH DEFECT. IN NO EVENT MAY ANY ACTION BASED UPON ANY DEFECT IN THIS SURVEY BE COMMENCED MORE THAN TEN YEARS FROM THE DATE ON THE CERTIFICATION SHOWN HEREON.



NOTE:  
MAGNETIC NORTH IS CURRENT AS OF 1/7/2015.  
MAGNETIC NORTH CHANGES WEST 0°06' PER YEAR.

#### NOTES:

- ▲ INDICATES FOUND SECTION CORNER
- INDICATES CALCULATED CORNER
- ELEVATION BASED ON NAVD88 (GEOID09)
- BASIS OF BEARING DERIVED FROM COLORADO COORDINATE SYSTEM 1983 NORTH ZONE UNLESS OTHERWISE NOTED.
- ALL MEASURED DISTANCES ARE GRID.  
COMBINED SCALE FACTOR: .99972882
- OPERATOR: ROB WILSON / PDOP = 1.1
- SEE ADDENDUM TO WELL LOCATION CERTIFICATE FOR EXISTING IMPROVEMENTS WITHIN 500' OF THE WELL PAD.
- WELL FOOTAGES ARE MEASURED AT RIGHT ANGLES TO THE SECTION LINES.
- THE BOTTOM OF HOLE BEARS S07°02'14"E 5319' FROM THE SURFACE LOCATION.



SCALE: 1" = 1000'

#### WELL PAD - ADAMSON 14N-28HZ

ADAMSON 37C-28HZ X  
WELL LOCATION CERTIFICATE  
2383' FSL & 1322' FWL NESW (SURFACE)  
LOCATED IN SECTION 21  
2381' FSL & 1908' FWL NESW (BOTTOM)  
LOCATED IN SECTION 28  
T2N, R65W, 6TH P.M.  
WELD COUNTY, COLORADO

Kerr-McGee Oil &  
Gas Onshore L.P.  
1099 18th Street  
Denver, Colorado 80202



#### CONSULTING, LLC

SHERIDAN OFFICE  
1095 Saberton Avenue  
Sheridan, Wyoming 82801  
Phone 307-674-0609

LOVELAND OFFICE  
1635 Foxtrail Drive, Suite 204  
Loveland, Colorado 80538  
Phone 970-776-4331

DRAFTED BY:	MDZ	CHECKED BY:	BJR	SHEET NO:
DATE DRAFTED:	2/18/15	DATE SURVEYED:	12/5/14	1B
REVISED:		FILE NAME:	14-107	1B OF 1