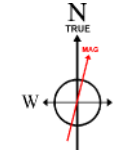


# EXTRACTION OIL & GAS

Location: COLORADO Slot: SLOT#06 WIND 6 (1686'FSL & 240'FWL, SEC.31)  
 Field: WELD COUNTY (NAD83/TRUE NORTH) Well: WIND 6  
 Facility: SEC.31-T05N-R67W Wellbore: WIND 6 PWB

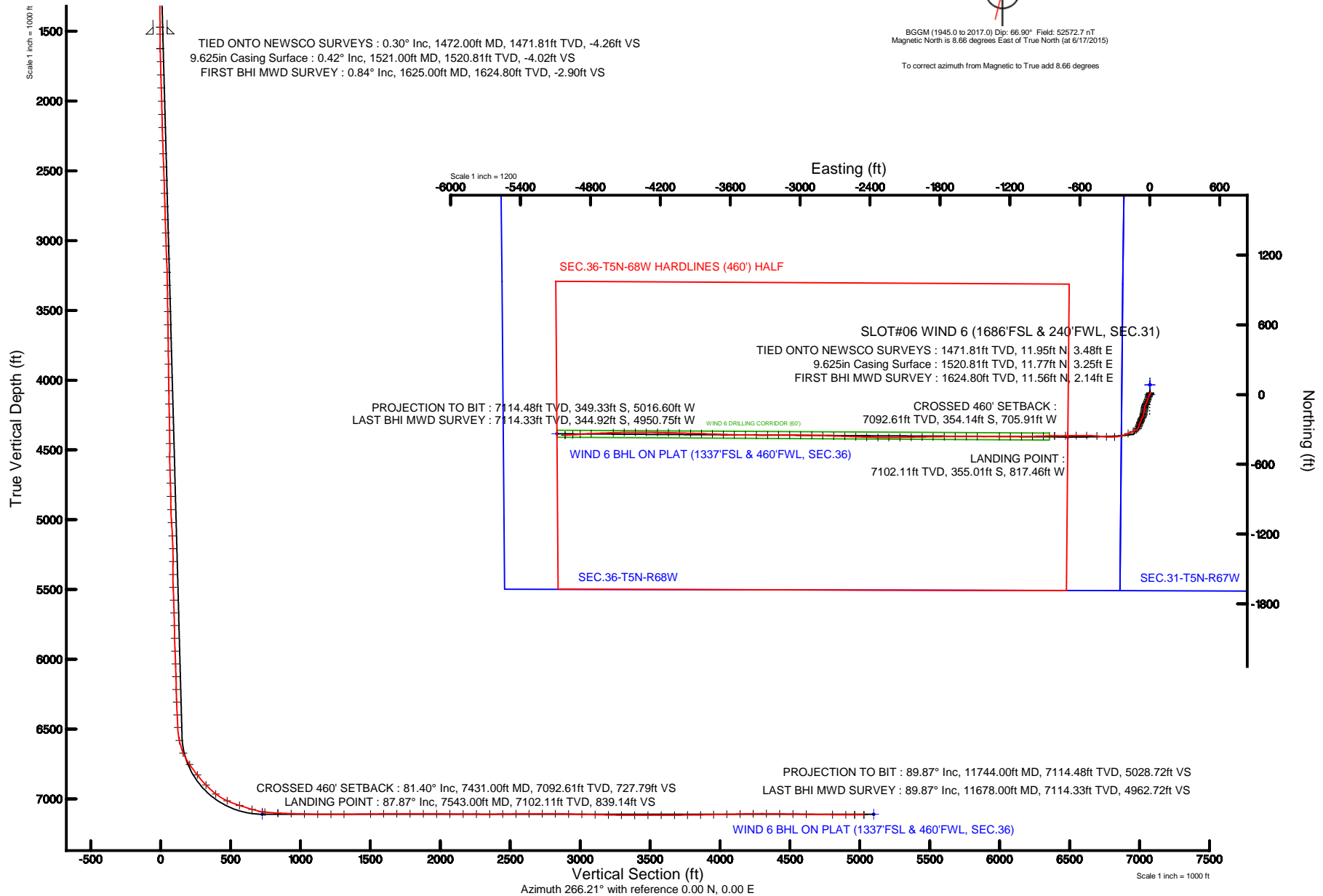
Plot reference wellpath is WIND 6 (REV-B.0) PWP

True vertical depths are referenced to SAVANNA 802 (RKB)	Grid System: NAD83 / Lambert Colorado SP, Northern Zone (501), US feet
Measured depths are referenced to SAVANNA 802 (RKB)	North Reference: True north
SAVANNA 802 (RKB) to Mean Sea Level: 4942 feet	Scale: True distance
Mean Sea Level to Mud line (At Slot: SLOT#06 WIND 6 (1686'FSL & 240'FWL, SEC.31)): 0 feet	Depths are in feet
Coordinates are in feet referenced to Slot	Created by: ingmjmr on 7/14/2015



BGGM (1945.0 to 2017.0) Dip: 66.90° Field: 52572.7 nT  
 Magnetic North is 8.66 degrees East of True North (at 6/17/2015)

To correct azimuth from Magnetic to True add 8.66 degrees





# Actual Wellpath Report

WIND 6 AWP

Page 1 of 7



## REFERENCE WELLPATH IDENTIFICATION

Operator	EXTRACTION OIL & GAS	Slot	SLOT#06 WIND 6 (1686'FSL & 240'FWL, SEC.31)
Area	COLORADO	Well	WIND 6
Field	WELD COUNTY (NAD83/TRUE NORTH)	Wellbore	WIND 6 AWB
Facility	SEC.31-T05N-R67W		

## REPORT SETUP INFORMATION

Projection System	NAD83 / Lambert Colorado SP, Northern Zone (501), US feet	Software System	WellArchitect® 4.1.1
North Reference	True	User	Ingmjmr
Scale	0.999958	Report Generated	7/14/2015 at 4:31:49 PM
Convergence at slot	0.36° East	Database/Source file	Denver/WIND_6_AWB.xml

## WELLPATH LOCATION

	Local coordinates		Grid coordinates		Geographic coordinates	
	North[ft]	East[ft]	Easting[US ft]	Northing[US ft]	Latitude	Longitude
Slot Location	-46745.38	-31059.21	3154775.58	1372190.94	40°21'13.446"N	104°56'40.736"W
Facility Reference Pt			3185481.27	1419166.81	40°28'55.560"N	104°49'59.556"W
Field Reference Pt			3185481.27	1419166.81	40°28'55.560"N	104°49'59.556"W

## WELLPATH DATUM

Calculation method	Minimum curvature	SAVANNA 802 (RKB) to Facility Vertical Datum	4942.00ft
Horizontal Reference Pt	Slot	SAVANNA 802 (RKB) to Mean Sea Level	4942.00ft
Vertical Reference Pt	SAVANNA 802 (RKB)	SAVANNA 802 (RKB) to Mud Line at Slot (SLOT#06 WIND 6 (1686'FSL & 240'FWL, SEC.31))	4942.00ft
MD Reference Pt	SAVANNA 802 (RKB)	Section Origin	N 0.00, E 0.00 ft
Field Vertical Reference	Mean Sea Level	Section Azimuth	266.21°



# Actual Wellpath Report

WIND 6 AWP

Page 2 of 7



## REFERENCE WELLPATH IDENTIFICATION

Operator	EXTRACTION OIL & GAS	Slot	SLOT#06 WIND 6 (1686'FSL & 240'FWL, SEC.31)
Area	COLORADO	Well	WIND 6
Field	WELD COUNTY (NAD83/TRUE NORTH)	Wellbore	WIND 6 AWB
Facility	SEC.31-T05N-R67W		

## WELLPATH DATA (109 stations)

MD [ft]	Inclination [°]	Azimuth [°]	TVD [ft]	Vert Sect [ft]	North [ft]	East [ft]	DLS [°/100ft]	Comments
1472.00	0.300	213.200	1471.81	-4.26	11.95	3.48	0.17	TIED ONTO NEWSOCO SURVEYS
1625.00	0.840	266.960	1624.80	-2.90	11.56	2.14	0.46	FIRST BHI MWD SURVEY
1719.00	4.100	201.660	1718.71	-0.76	8.40	0.21	4.07	
1813.00	4.330	199.760	1812.46	2.10	1.93	-2.23	0.29	
1908.00	4.000	200.450	1907.21	4.89	-4.55	-4.60	0.35	
2003.00	3.920	199.750	2001.98	7.55	-10.71	-6.86	0.10	
2098.00	3.240	199.380	2096.79	9.90	-16.29	-8.84	0.72	
2192.00	3.000	196.530	2190.66	11.80	-21.16	-10.42	0.30	
2286.00	5.420	202.470	2284.39	14.62	-27.62	-12.82	2.61	
2381.00	5.350	199.340	2378.98	18.35	-35.95	-16.00	0.32	
2476.00	5.370	198.350	2473.56	21.76	-44.34	-18.87	0.10	
2571.00	4.720	198.760	2568.19	24.94	-52.26	-21.53	0.69	
2665.00	4.280	200.010	2661.90	27.83	-59.22	-23.97	0.48	
2760.00	3.950	201.260	2756.66	30.65	-65.60	-26.37	0.36	
2854.00	3.730	207.090	2850.45	33.59	-71.34	-28.94	0.48	
2949.00	3.330	206.940	2945.27	36.59	-76.55	-31.59	0.42	
3043.00	3.070	209.210	3039.12	39.35	-81.18	-34.06	0.31	
3137.00	5.140	205.770	3132.87	42.80	-87.17	-37.12	2.22	
3231.00	4.350	196.680	3226.55	46.13	-94.38	-39.97	1.16	
3325.00	3.690	190.650	3320.32	48.13	-100.77	-41.55	0.83	
3420.00	3.410	192.460	3415.14	49.68	-106.53	-42.73	0.32	
3514.00	3.430	188.250	3508.97	51.05	-112.04	-43.74	0.27	
3609.00	3.550	191.250	3603.79	52.41	-117.74	-44.72	0.23	
3704.00	3.570	188.650	3698.61	53.81	-123.55	-45.74	0.17	
3798.00	3.640	186.700	3792.43	54.98	-129.41	-46.52	0.15	
3892.00	3.170	188.090	3886.26	56.06	-134.94	-47.24	0.51	
3987.00	3.030	189.600	3981.12	57.18	-140.02	-48.03	0.17	
4082.00	4.500	190.610	4075.91	58.69	-146.16	-49.13	1.55	
4177.00	3.860	191.940	4170.66	60.48	-152.95	-50.48	0.68	
4272.00	3.510	198.890	4265.46	62.47	-158.83	-52.08	0.60	



# Actual Wellpath Report

WIND 6 AWP

Page 3 of 7



## REFERENCE WELLPATH IDENTIFICATION

Operator	EXTRACTION OIL & GAS	Slot	SLOT#06 WIND 6 (1686'FSL & 240'FWL, SEC.31)
Area	COLORADO	Well	WIND 6
Field	WELD COUNTY (NAD83/TRUE NORTH)	Wellbore	WIND 6 AWB
Facility	SEC.31-T05N-R67W		

## WELLPATH DATA (109 stations)

MD [ft]	Inclination [°]	Azimuth [°]	TVD [ft]	Vert Sect [ft]	North [ft]	East [ft]	DLS [°/100ft]	Comments
4366.00	3.110	195.490	4359.31	64.42	-164.01	-53.69	0.47	
4461.00	2.570	183.140	4454.19	65.53	-168.62	-54.50	0.86	
4556.00	3.380	167.270	4549.06	65.35	-173.48	-54.00	1.21	
4651.00	4.210	207.790	4643.87	66.74	-179.30	-55.01	2.88	
4745.00	3.840	201.780	4737.64	69.91	-185.27	-57.78	0.60	
4840.00	3.000	197.400	4832.47	72.18	-190.60	-59.71	0.93	
4935.00	2.900	203.920	4927.34	74.20	-195.17	-61.43	0.37	
5029.00	5.020	223.360	5021.12	78.32	-200.33	-65.21	2.64	
5124.00	4.080	220.150	5115.82	83.71	-205.94	-70.25	1.02	
5216.00	3.610	213.040	5207.61	87.72	-210.87	-73.94	0.73	
5308.00	3.920	166.110	5299.43	88.91	-216.35	-74.76	3.27	
5401.00	2.700	170.060	5392.28	88.11	-221.59	-73.62	1.33	
5493.00	4.350	209.970	5484.11	89.82	-226.75	-74.99	3.11	
5585.00	3.500	212.650	5575.89	93.43	-232.14	-78.25	0.94	
5677.00	2.450	218.840	5667.77	96.43	-236.03	-81.00	1.19	
5768.00	3.130	194.730	5758.66	98.53	-239.95	-82.85	1.47	
5860.00	2.680	196.250	5850.55	100.07	-244.45	-84.09	0.50	
5952.00	6.090	203.990	5942.26	103.08	-250.97	-86.67	3.75	
6044.00	4.770	201.330	6033.85	106.98	-258.99	-90.05	1.46	
6135.00	3.740	199.720	6124.60	109.77	-265.31	-92.43	1.14	
6228.00	2.920	192.070	6217.44	111.63	-270.48	-93.95	1.00	
6317.00	6.350	201.480	6306.14	114.35	-277.28	-96.22	3.93	
6409.00	5.430	206.550	6397.65	118.72	-285.91	-100.03	1.15	
6500.00	4.410	205.390	6488.31	122.60	-292.92	-103.46	1.13	
6595.00	13.560	237.310	6582.09	134.16	-302.26	-114.42	10.62	
6690.00	23.800	246.180	6671.98	162.00	-316.06	-141.41	11.16	
6785.00	36.390	248.640	6754.02	207.06	-334.14	-185.37	13.31	
6880.00	38.900	253.650	6829.25	263.06	-352.81	-240.26	4.16	
6975.00	43.040	265.380	6901.07	324.71	-363.83	-301.31	9.18	
7070.00	52.670	274.770	6964.82	394.73	-363.30	-371.52	12.49	



# Actual Wellpath Report

WIND 6 AWP

Page 4 of 7



## REFERENCE WELLPATH IDENTIFICATION

Operator	EXTRACTION OIL & GAS	Slot	SLOT#06 WIND 6 (1686'FSL & 240'FWL, SEC.31)
Area	COLORADO	Well	WIND 6
Field	WELD COUNTY (NAD83/TRUE NORTH)	Wellbore	WIND 6 AWB
Facility	SEC.31-T05N-R67W		

## WELLPATH DATA (109 stations) † = interpolated/extrapolated station

MD [ft]	Inclination [°]	Azimuth [°]	TVD [ft]	Vert Sect [ft]	North [ft]	East [ft]	DLS [°/100ft]	Comments
7165.00	65.900	275.150	7013.24	475.27	-356.24	-452.70	13.93	
7260.00	72.260	269.440	7047.16	563.42	-352.78	-541.28	8.73	
7355.00	72.820	269.550	7075.67	653.90	-353.58	-631.90	0.60	
7431.00†	81.398	269.591	7092.61	727.79	-354.14	-705.91	11.29	CROSSED 460' SETBACK
7449.00	83.430	269.600	7094.98	745.60	-354.26	-723.75	11.29	
7543.00	87.870	269.480	7102.11	839.14	-355.01	-817.46	4.73	LANDING POINT
7638.00	88.180	268.780	7105.38	933.96	-356.46	-912.39	0.81	
7733.00	88.180	268.520	7108.40	1028.83	-358.69	-1007.31	0.27	
7827.00	89.510	269.550	7110.30	1122.69	-360.28	-1101.28	1.79	
7922.00	90.150	270.210	7110.58	1217.50	-360.47	-1196.28	0.97	
8016.00	90.280	270.200	7110.23	1311.27	-360.14	-1290.27	0.14	
8206.00	90.710	269.660	7108.58	1500.86	-360.37	-1480.27	0.36	
8300.00	90.400	269.740	7107.67	1594.68	-360.86	-1574.26	0.34	
8395.00	90.120	269.720	7107.24	1689.50	-361.31	-1669.26	0.30	
8490.00	89.970	269.590	7107.17	1784.33	-361.88	-1764.26	0.21	
8585.00	89.660	269.070	7107.48	1879.18	-362.99	-1859.25	0.64	
8680.00	89.940	268.700	7107.81	1974.08	-364.84	-1954.23	0.49	
8774.00	89.750	269.000	7108.06	2067.98	-366.73	-2048.21	0.38	
8870.00	89.540	269.330	7108.66	2163.85	-368.13	-2144.20	0.41	
8964.00	89.540	269.270	7109.41	2257.71	-369.28	-2238.19	0.06	
9059.00	90.000	271.280	7109.79	2352.46	-368.82	-2333.18	2.17	
9154.00	90.920	272.160	7109.03	2447.02	-365.97	-2428.13	1.34	
9249.00	90.670	272.320	7107.71	2541.49	-362.26	-2523.05	0.31	
9343.00	90.330	271.670	7106.89	2635.00	-358.98	-2616.99	0.78	
9438.00	90.270	271.940	7106.39	2729.55	-355.99	-2711.94	0.29	
9532.00	89.230	271.950	7106.80	2823.07	-352.80	-2805.89	1.11	
9627.00	88.550	271.300	7108.64	2917.63	-350.11	-2900.83	0.99	
9722.00	88.730	270.810	7110.90	3012.27	-348.36	-2995.79	0.55	
9817.00	88.700	270.220	7113.03	3106.97	-347.51	-3090.76	0.62	
9912.00	88.760	269.990	7115.13	3201.73	-347.33	-3185.73	0.25	



# Actual Wellpath Report

WIND 6 AWP

Page 5 of 7



## REFERENCE WELLPATH IDENTIFICATION

Operator	EXTRACTION OIL & GAS	Slot	SLOT#06 WIND 6 (1686'FSL & 240'FWL, SEC.31)
Area	COLORADO	Well	WIND 6
Field	WELD COUNTY (NAD83/TRUE NORTH)	Wellbore	WIND 6 AWB
Facility	SEC.31-T05N-R67W		

## WELLPATH DATA (109 stations)

MD [ft]	Inclination [°]	Azimuth [°]	TVD [ft]	Vert Sect [ft]	North [ft]	East [ft]	DLS [°/100ft]	Comments
10006.00	88.950	268.950	7117.01	3295.56	-348.20	-3279.71	1.12	
10101.00	90.210	270.740	7117.71	3390.36	-348.46	-3374.70	2.30	
10196.00	90.150	270.820	7117.41	3485.05	-347.16	-3469.69	0.11	
10291.00	90.000	271.360	7117.29	3579.71	-345.36	-3564.67	0.59	
10386.00	90.520	272.200	7116.86	3674.26	-342.41	-3659.63	1.04	
10480.00	90.430	271.730	7116.08	3767.78	-339.18	-3753.57	0.51	
10573.00	91.070	272.140	7114.86	3860.31	-336.04	-3846.51	0.82	
10668.00	91.260	271.520	7112.93	3954.83	-333.01	-3941.44	0.68	
10763.00	91.320	271.430	7110.79	4049.41	-330.57	-4036.38	0.11	
10858.00	91.260	271.350	7108.65	4143.99	-328.26	-4131.33	0.11	
10952.00	91.010	271.350	7106.79	4237.60	-326.05	-4225.29	0.27	
11047.00	89.470	270.280	7106.39	4332.29	-324.70	-4320.27	1.97	
11141.00	89.350	269.890	7107.36	4426.07	-324.56	-4414.27	0.43	
11236.00	88.890	268.820	7108.82	4520.91	-325.63	-4509.25	1.23	
11331.00	89.070	268.280	7110.51	4615.81	-328.03	-4604.20	0.60	
11520.00	89.350	267.120	7113.11	4804.73	-335.61	-4793.03	0.63	
11614.00	89.560	266.510	7114.01	4898.72	-340.84	-4886.88	0.69	
11678.00	89.870	266.170	7114.33	4962.72	-344.92	-4950.75	0.72	LAST BHI MWD SURVEY
11744.00	89.870	266.170	7114.48	5028.72	-349.33	-5016.60	0.00	PROJECTION TO BIT

## HOLE & CASING SECTIONS - Ref Wellbore: WIND 6 AWB Ref Wellpath: WIND 6 AWP

String/Diameter	Start MD [ft]	End MD [ft]	Interval [ft]	Start TVD [ft]	End TVD [ft]	Start N/S [ft]	Start E/W [ft]	End N/S [ft]	End E/W [ft]
9.625in Casing Surface	15.00	1521.00	1506.00	15.00	1520.81	0.00	0.00	11.77	3.25
7.875in Open Hole	1521.00	11744.00	10223.00	1520.81	7114.48	11.77	3.25	-349.33	-5016.60



# Actual Wellpath Report

WIND 6 AWP

Page 6 of 7



## REFERENCE WELLPATH IDENTIFICATION

Operator	EXTRACTION OIL & GAS	Slot	SLOT#06 WIND 6 (1686'FSL & 240'FWL, SEC.31)
Area	COLORADO	Well	WIND 6
Field	WELD COUNTY (NAD83/TRUE NORTH)	Wellbore	WIND 6 AWB
Facility	SEC.31-T05N-R67W		

## TARGETS

Name	TVD [ft]	North [ft]	East [ft]	Grid East [US ft]	Grid North [US ft]	Latitude	Longitude	Shape
SEC.31-T5N-R67W	2.00	83.79	1.08	3154776.14	1372274.74	40°21'14.274"N	104°56'40.722"W	polygon
SEC.36-T5N-R68W	2.00	83.79	1.08	3154776.14	1372274.74	40°21'14.274"N	104°56'40.722"W	polygon
SEC.36-T5N-68W HARDLINES (460') HALF	7107.00	83.79	1.08	3154776.14	1372274.74	40°21'14.274"N	104°56'40.722"W	polygon
WIND 6 BHL ON PLAT (1337'FSL & 460'FWL, SEC.36)	7110.00	-337.17	-5087.43	3149690.58	1371821.93	40°21'10.109"N	104°57'46.447"W	point
WIND 6 DRILLING CORRIDOR (60')	7110.00	0.00	0.00	3154775.58	1372190.94	40°21'13.446"N	104°56'40.736"W	polygon
WIND 6 LANDING POINT	7110.00	-364.70	-704.07	3154073.84	1371821.85	40°21'09.842"N	104°56'49.830"W	point

## WELLPATH COMPOSITION - Ref Wellbore: WIND 6 AWB Ref Wellpath: WIND 6 AWP

Start MD [ft]	End MD [ft]	Positional Uncertainty Model	Log Name/Comment	Wellbore
15.00	1472.00	ISCWSA MWD, Rev. 3 (Standard)	NEWSCO SURVEYS <134-1472>	WIND 6 AWB
1472.00	7543.00	NaviTrak (Standard)	BHI MWD/NAVITRAK (STD) 7 7/8" HOLE VERTICAL/CURVE <1625-7543>	WIND 6 AWB
7543.00	11678.00	NaviTrak (Standard)	BHI MWD/NAVITRAK (STD) 7 7/8" HOLE (LATERAL) <7638-11678>	WIND 6 AWB
11678.00	11744.00	Blind Drilling (std)	Projection to bit	WIND 6 AWB



# Actual Wellpath Report

WIND 6 AWP

Page 7 of 7



## REFERENCE WELLPATH IDENTIFICATION

Operator	EXTRACTION OIL & GAS	Slot	SLOT#06 WIND 6 (1686'FSL & 240'FWL, SEC.31)
Area	COLORADO	Well	WIND 6
Field	WELD COUNTY (NAD83/TRUE NORTH)	Wellbore	WIND 6 AWB
Facility	SEC.31-T05N-R67W		

## WELLPATH COMMENTS

MD [ft]	Inclination [°]	Azimuth [°]	TVD [ft]	Comment
1472.00	0.300	213.200	1471.81	TIED ONTO NEWSCO SURVEYS
1625.00	0.840	266.960	1624.80	FIRST BHI MWD SURVEY
7431.00	81.398	269.591	7092.61	CROSSED 460' SETBACK
7543.00	87.870	269.480	7102.11	LANDING POINT
11678.00	89.870	266.170	7114.33	LAST BHI MWD SURVEY
11744.00	89.870	266.170	7114.48	PROJECTION TO BIT