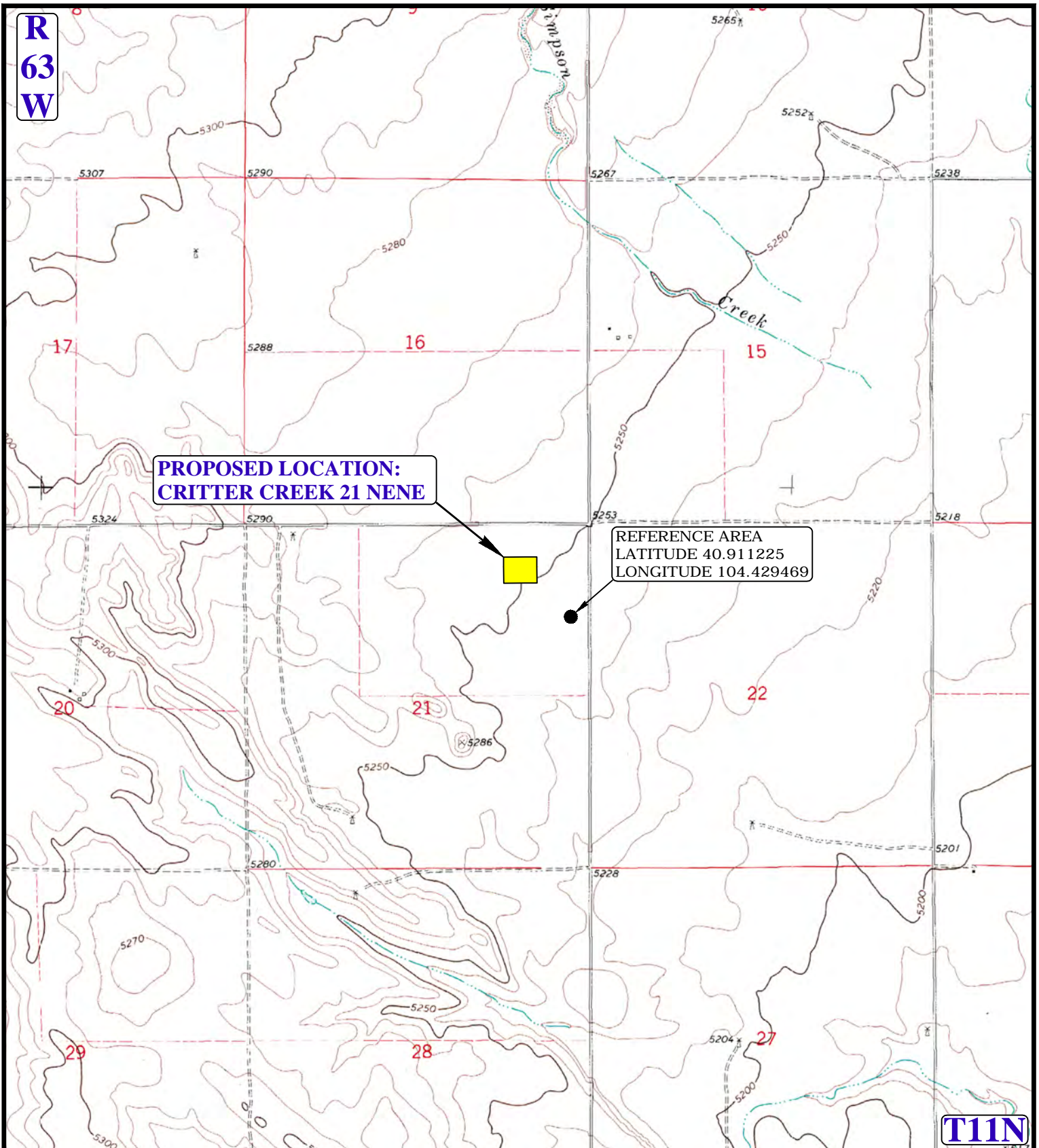


R
63
W



T11N

EOG RESOURCES, INC.

CRITTER CREEK 21 NENE
SECTION 21, T11N, R63W, 6th P.M.
NE 1/4 NE 1/4
WELD COUNTY, COLORADO



UELS, LLC
Corporate Office * 85 South 200 East
Vernal, UT 84078 * (435) 789-1017

DRAWN BY: J.D.J.	DATE DRAWN: 04-02-15
SCALE: 1" = 2000'	REVISED: 00-00-00
REFERENCE AREA MAP	REF TOPO