

PHOTO: VIEW FROM CORNER #5 TO LOCATION STAKES

CAMERA ANGLE: NORTHERLY

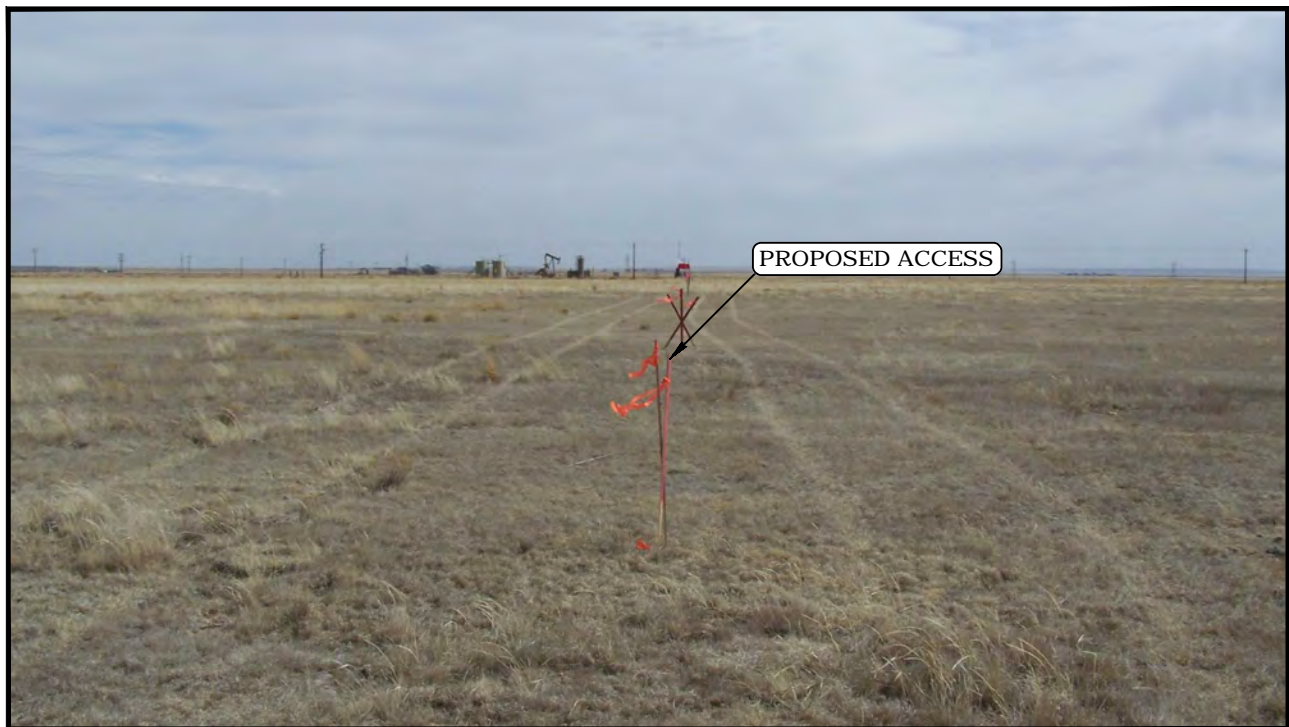


PHOTO: VIEW FROM BEGINNING OF PROPOSED ACCESS

CAMERA ANGLE: EASTERLY

## EOG RESOURCES, INC.

CRITTER CREEK 21 NENE  
SECTION 21, T11N, R63W, 6th P.M.  
NE 1/4 NE 1/4  
WELD COUNTY, COLORADO



**UELS, LLC**  
Corporate Office \* 85 South 200 East  
Vernal, UT 84078 \* (435) 789-1017

DRAWN BY: J.D.J.	DATE DRAWN: 04-02-15
TAKEN BY: J.C.	REVISED: 00-00-00
<b>LOCATION PHOTOS</b>	<b>PHOTO 1</b>



PHOTO: VIEW OF LOCATION STAKES

CAMERA ANGLE: NORTHERLY



PHOTO: VIEW OF LOCATION STAKES

CAMERA ANGLE: EASTERLY

## EOG RESOURCES, INC.

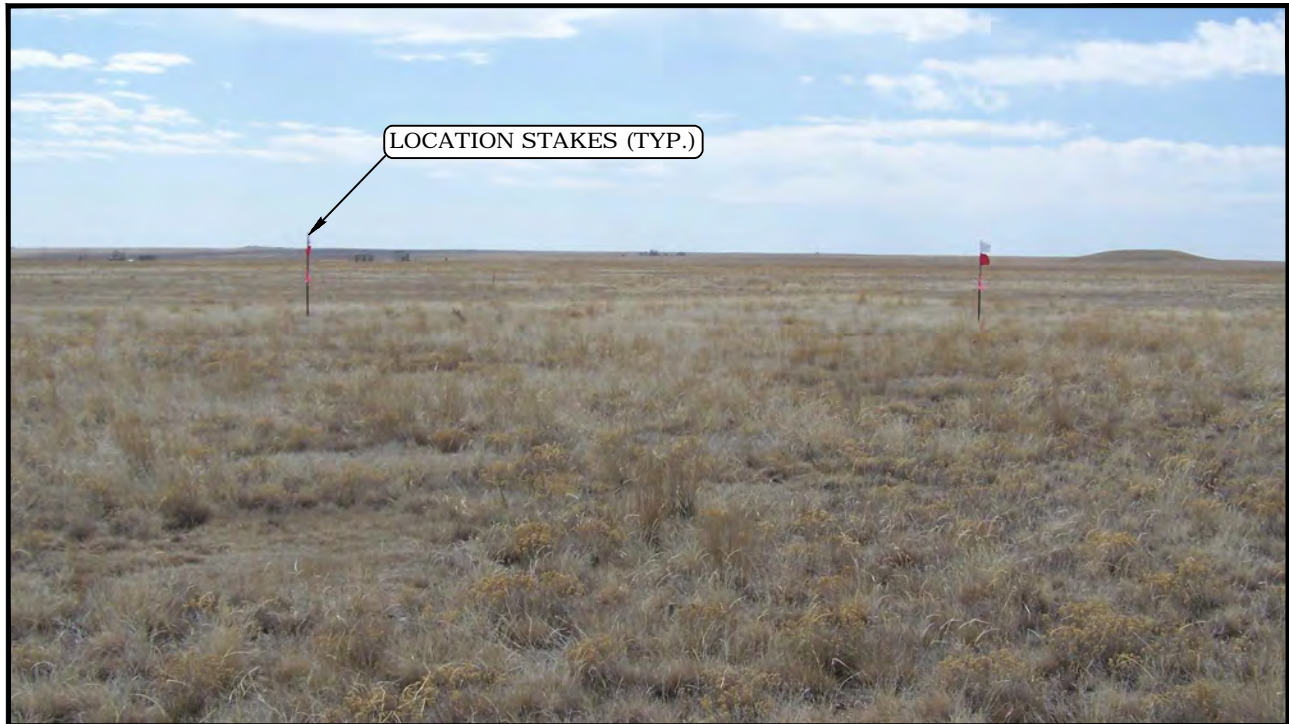
CRITTER CREEK 21 NENE  
SECTION 21, T11N, R63W, 6th P.M.  
NE 1/4 NE 1/4  
WELD COUNTY, COLORADO



**UELS, LLC**  
Corporate Office \* 85 South 200 East  
Vernal, UT 84078 \* (435) 789-1017

DRAWN BY: J.D.J.	DATE DRAWN: 04-02-15
TAKEN BY: J.C.	REVISED: 00-00-00
<b>LOCATION PHOTOS</b>	<b>PHOTO 2</b>





**PHOTO: VIEW OF LOCATION STAKES**

**CAMERA ANGLE: SOUTHERLY**



**PHOTO: VIEW OF LOCATION STAKES**

**CAMERA ANGLE: WESTERLY**

**EOG RESOURCES, INC.**

**CRITTER CREEK 21 NENE  
SECTION 21, T11N, R63W, 6th P.M.  
NE 1/4 NE 1/4  
WELD COUNTY, COLORADO**



**UELS, LLC**  
Corporate Office \* 85 South 200 East  
Vernal, UT 84078 \* (435) 789-1017

DRAWN BY: J.D.J.	DATE DRAWN: 04-02-15
TAKEN BY: J.C.	REVISED: 00-00-00
<b>LOCATION PHOTOS</b>	<b>PHOTO 3</b>