
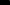
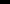
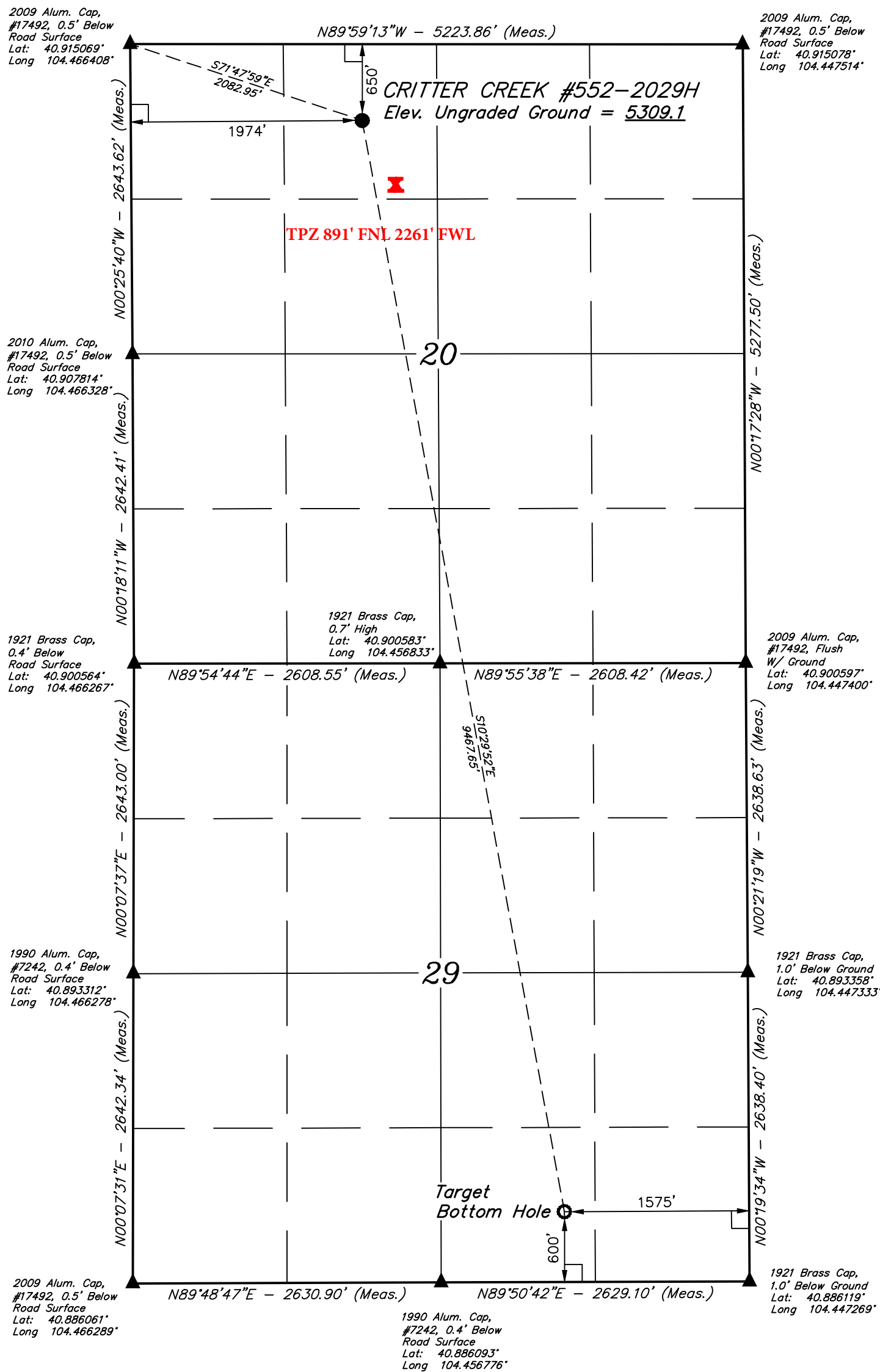


T11N, R63W, 6th P.M.

 = PROPOSED WELLHEAD.
 = TARGET BOTTOM HOLE.
 = SECTION CORNERS
 LOCATED.



A vertical scale bar with markings at 1000', 500', 0', and 1000'.

NAD 83 (TARGET BOTTOM HOLE)	NAD 83 (SURFACE LOCATION)
LATITUDE = 40°53'15.90" (40.887750)	LATITUDE = 40°54'47.84" (40.913289)
LONGITUDE = 104°27'10.72" (104.452978)	LONGITUDE = 104°27'33.30" (104.459250)
NAD 27 (TARGET BOTTOM HOLE)	NAD 27 (SURFACE LOCATION)
LATITUDE = 40°53'15.96" (40.887767)	LATITUDE = 40°54'47.90" (40.913306)
LONGITUDE = 104°27'08.88" (104.452467)	LONGITUDE = 104°27'31.45" (104.458736)
STATE PLANE NAD 83 (CO NORTH)	STATE PLANE NAD 83 (CO NORTH)
N: 1567966.81 E: 3289501.28	N: 1577251.13 E: 3287658.53
STATE PLANE NAD 83 (CO NORTH)	STATE PLANE NAD 83 (CO NORTH)
N: 567965.06 E: 2289650.68	N: 577249.20 E: 2287807.99

THIS IS TO CERTIFY THAT THE ABOVE PLAT WAS PREPARED FROM FIELD NOTES OF ACTUAL SURVEYS MADE BY ME OR UNDER MY SUPERVISION AND THAT THE SAME ARE TRUE AND CORRECT TO THE BEST OF MY KNOWLEDGE AND BELIEF.

REGISTERED LAND SURVEYOR
REGISTRATION NO. 28285
STATE OF COLORADO 04-20-15

SPOT ELEVATION LOCATED AT THE NORTHEAST CORNER OF SECTION 1, T11N, R63W, 6th P.M. TAKEN FROM THE HEREFORD, QUADRANGLE, COLORADO, WELD COUNTY, 7.5 MINUTE QUAD (TOPOGRAPHIC MAP) PUBLISHED BY THE UNITED STATES DEPARTMENT OF THE INTERIOR, GEOLOGICAL SURVEY. SAID ELEVATION IS MARKED AS BEING 5352 FEET.

CRITTER CREEK #552-2029H
NE 1/4 NW 1/4, SECTION 20, T11N, R63W, 6th P.M.
WELD COUNTY, COLORADO

SURVEYED BY: GREG WEIMER, C.J.	DATE: 03-26-15
DRAWN BY: J.M.C.	DATE DRAWN: 04-03-15
SCALE: 1" = 1000'	REVISED: 00-00-00

WELL LOCATION PLAT



UELS, LLC
Corporate Office * 85 South 200 East
Vernal, UT 84078 * (435) 789-1017

