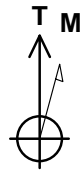
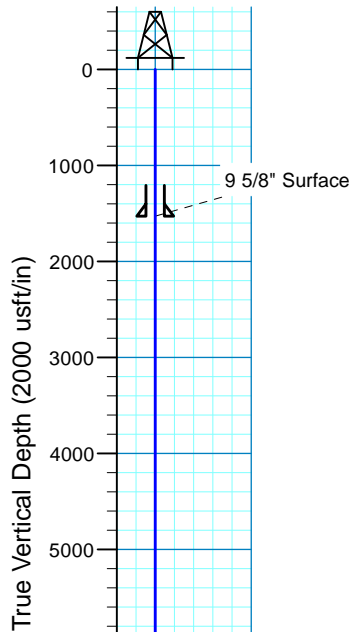


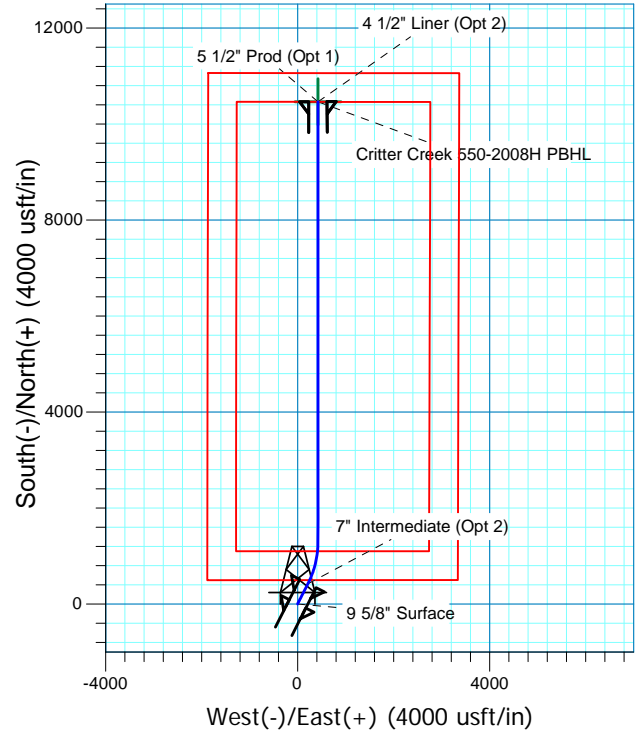
# Critter Creek 550-2008H

Sec.20-T11N-R63W  
Weld County, Colorado

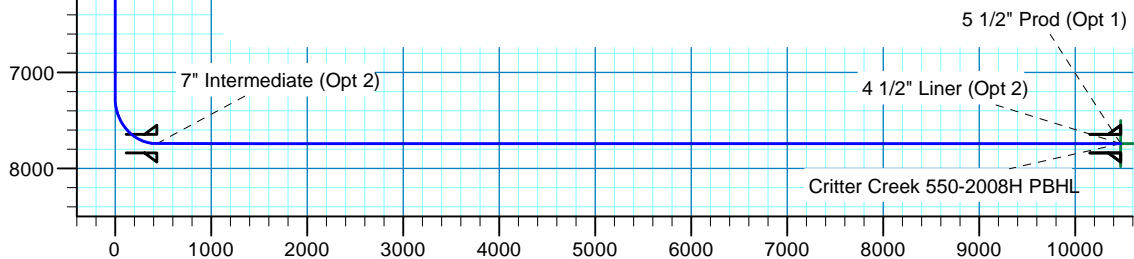
Surface Location			
NAD 1927 (NADCON CONUS) Colorado North 501			
Ground Elevation: 5309.0 RKB @ 5334.0usft (KB GL+25')			
Northing	Easting	Latitude	Longitude
577398.07	2287706.17	40° 54' 49.387 N	104° 27' 32.753 W



Azimuths to True North  
Magnetic North: 8.30°  
  
Magnetic Field  
Strength: 52917.0snT  
Dip Angle: 67.36°  
Date: 6/8/2015  
Model: IGRF2015



Project: DJ - Hereford Ranch  
Site: Critter Creek C20 NENW Pad  
Well: Critter Creek 550-2008H  
Plan: APD Plan (Plat Cert 4/20/15)



Vertical Section at 2.32° (2000 usft/in)

SECTION DETAILS										
Sec	MD	Inc	Azi	TVD	+N/-S	+E/-W	Dleg	TFace	VSect	Target
1	0.0	0.00	0.00	0.0	0.0	0.0	0.00	0.00	0.0	
2	7265.5	0.00	0.00	7265.5	0.0	0.0	0.00	0.00	0.0	
3	8015.5	90.00	27.00	7743.0	425.4	216.8	12.00	27.00	433.9	
4	8915.5	90.00	360.00	7743.0	1292.5	424.9	3.00	-90.00	1308.7	Critter Creek 550-2008H PBHL
5	18088.4	90.00	360.00	7743.0	10465.4	424.9	0.00	0.00	10474.0	Critter Creek 550-2008H PBHL
TARGET DETAILS										
Name	TVD	+N/-S	+E/-W	Northing	Easting	Latitude	Longitude	Shape		
Critter Creek 550-2008H PBHL	7743.0	10465.4	424.9	587867.75	2288008.15	40° 56' 32.792 N	104° 27' 27.217 W	Point		

# **Denver Division- Colorado**

**DJ - Hereford Ranch  
Crittter Creek C20 NENW Pad  
Crittter Creek 550-2008H  
98455  
OH**

**Plan: APD Plan (Plat Cert 4/20/15)**

## **Standard Planning Report**

**08 July, 2015**

# EOG Resources, Inc.

## Planning Report

<b>Database:</b>	EDM_DENVER	<b>Local Co-ordinate Reference:</b>	Well Critter Creek 550-2008H
<b>Company:</b>	Denver Division- Colorado	<b>TVD Reference:</b>	RKB @ 5334.0usft (KB GL+25')
<b>Project:</b>	DJ - Hereford Ranch	<b>MD Reference:</b>	RKB @ 5334.0usft (KB GL+25')
<b>Site:</b>	Critter Creek C20 NENW Pad	<b>North Reference:</b>	True
<b>Well:</b>	Critter Creek 550-2008H	<b>Survey Calculation Method:</b>	Minimum Curvature
<b>Wellbore:</b>	OH		
<b>Design:</b>	APD Plan (Plat Cert 4/20/15)		

<b>Project</b>	DJ - Hereford Ranch, Weld County		
<b>Map System:</b>	US State Plane 1927 (Exact solution)	<b>System Datum:</b>	Mean Sea Level
<b>Geo Datum:</b>	NAD 1927 (NADCON CONUS)		
<b>Map Zone:</b>	Colorado North 501		

<b>Site</b>	Critter Creek C20 NENW Pad		
<b>Site Position:</b>		<b>Northing:</b>	577,200.00 usft
<b>From:</b>	Map	<b>Easting:</b>	2,287,600.00 usft
<b>Position Uncertainty:</b>	0.0 usft	<b>Slot Radius:</b>	13-3/16 "
		<b>Latitude:</b>	40° 54' 47.442 N
		<b>Longitude:</b>	104° 27' 34.166 W
		<b>Grid Convergence:</b>	0.67 °

<b>Well</b>	Critter Creek 550-2008H		
<b>Well Position</b>	<b>+N/-S</b>	196.8 usft	<b>Northing:</b>
	<b>+E/-W</b>	108.5 usft	<b>Easting:</b>
<b>Position Uncertainty</b>	0.0 usft	<b>Wellhead Elevation:</b>	0.0 usft
		<b>Latitude:</b>	40° 54' 49.387 N
		<b>Longitude:</b>	104° 27' 32.753 W
		<b>Ground Level:</b>	5,309.0 usft

<b>Wellbore</b>	OH				
<b>Magnetics</b>	<b>Model Name</b>	<b>Sample Date</b>	<b>Declination (°)</b>	<b>Dip Angle (°)</b>	<b>Field Strength (nT)</b>
	IGRF2015	6/8/2015	8.30	67.36	52,917

<b>Design</b>	APD Plan (Plat Cert 4/20/15)			
<b>Audit Notes:</b>				
<b>Version:</b>	<b>Phase:</b>	PROTOTYPE	<b>Tie On Depth:</b>	0.0
<b>Vertical Section:</b>	<b>Depth From (TVD) (usft)</b>	<b>+N/-S (usft)</b>	<b>+E/-W (usft)</b>	<b>Direction (°)</b>
	0.0	0.0	0.0	2.32

<b>Plan Sections</b>										
Measured Depth (usft)	Inclination (°)	Azimuth (°)	Vertical Depth (usft)	+N/-S (usft)	+E/-W (usft)	Dogleg Rate (°/100usft)	Build Rate (°/100usft)	Turn Rate (°/100usft)	TFO (°)	Target
0.0	0.00	0.00	0.0	0.0	0.0	0.00	0.00	0.00	0.00	
7,265.5	0.00	0.00	7,265.5	0.0	0.0	0.00	0.00	0.00	0.00	
8,015.5	90.00	27.00	7,743.0	425.4	216.8	12.00	12.00	0.00	27.00	
8,915.5	90.00	360.00	7,743.0	1,292.5	424.9	3.00	0.00	-3.00	-90.00	Critter Creek 550-200
18,088.4	90.00	360.00	7,743.0	10,465.4	424.9	0.00	0.00	0.00	0.00	Critter Creek 550-200

# EOG Resources, Inc.

## Planning Report

<b>Database:</b>	EDM_DENVER	<b>Local Co-ordinate Reference:</b>	Well Critter Creek 550-2008H
<b>Company:</b>	Denver Division- Colorado	<b>TVD Reference:</b>	RKB @ 5334.0usft (KB GL+25')
<b>Project:</b>	DJ - Hereford Ranch	<b>MD Reference:</b>	RKB @ 5334.0usft (KB GL+25')
<b>Site:</b>	Critter Creek C20 NENW Pad	<b>North Reference:</b>	True
<b>Well:</b>	Critter Creek 550-2008H	<b>Survey Calculation Method:</b>	Minimum Curvature
<b>Wellbore:</b>	OH		
<b>Design:</b>	APD Plan (Plat Cert 4/20/15)		

Planned Survey									
Measured Depth (usft)	Inclination (°)	Azimuth (°)	Vertical Depth (usft)	+N/-S (usft)	+E/-W (usft)	Vertical Section (usft)	Dogleg Rate (°/100usft)	Build Rate (°/100usft)	Turn Rate (°/100usft)
0.0	0.00	0.00	0.0	0.0	0.0	0.0	0.00	0.00	0.00
100.0	0.00	0.00	100.0	0.0	0.0	0.0	0.00	0.00	0.00
200.0	0.00	0.00	200.0	0.0	0.0	0.0	0.00	0.00	0.00
300.0	0.00	0.00	300.0	0.0	0.0	0.0	0.00	0.00	0.00
400.0	0.00	0.00	400.0	0.0	0.0	0.0	0.00	0.00	0.00
500.0	0.00	0.00	500.0	0.0	0.0	0.0	0.00	0.00	0.00
600.0	0.00	0.00	600.0	0.0	0.0	0.0	0.00	0.00	0.00
700.0	0.00	0.00	700.0	0.0	0.0	0.0	0.00	0.00	0.00
800.0	0.00	0.00	800.0	0.0	0.0	0.0	0.00	0.00	0.00
900.0	0.00	0.00	900.0	0.0	0.0	0.0	0.00	0.00	0.00
1,000.0	0.00	0.00	1,000.0	0.0	0.0	0.0	0.00	0.00	0.00
1,100.0	0.00	0.00	1,100.0	0.0	0.0	0.0	0.00	0.00	0.00
1,200.0	0.00	0.00	1,200.0	0.0	0.0	0.0	0.00	0.00	0.00
1,300.0	0.00	0.00	1,300.0	0.0	0.0	0.0	0.00	0.00	0.00
1,400.0	0.00	0.00	1,400.0	0.0	0.0	0.0	0.00	0.00	0.00
1,500.0	0.00	0.00	1,500.0	0.0	0.0	0.0	0.00	0.00	0.00
1,529.0	0.00	0.00	1,529.0	0.0	0.0	0.0	0.00	0.00	0.00
9 5/8" Surface									
1,600.0	0.00	0.00	1,600.0	0.0	0.0	0.0	0.00	0.00	0.00
1,700.0	0.00	0.00	1,700.0	0.0	0.0	0.0	0.00	0.00	0.00
1,800.0	0.00	0.00	1,800.0	0.0	0.0	0.0	0.00	0.00	0.00
1,900.0	0.00	0.00	1,900.0	0.0	0.0	0.0	0.00	0.00	0.00
2,000.0	0.00	0.00	2,000.0	0.0	0.0	0.0	0.00	0.00	0.00
2,100.0	0.00	0.00	2,100.0	0.0	0.0	0.0	0.00	0.00	0.00
2,200.0	0.00	0.00	2,200.0	0.0	0.0	0.0	0.00	0.00	0.00
2,300.0	0.00	0.00	2,300.0	0.0	0.0	0.0	0.00	0.00	0.00
2,400.0	0.00	0.00	2,400.0	0.0	0.0	0.0	0.00	0.00	0.00
2,500.0	0.00	0.00	2,500.0	0.0	0.0	0.0	0.00	0.00	0.00
2,600.0	0.00	0.00	2,600.0	0.0	0.0	0.0	0.00	0.00	0.00
2,700.0	0.00	0.00	2,700.0	0.0	0.0	0.0	0.00	0.00	0.00
2,800.0	0.00	0.00	2,800.0	0.0	0.0	0.0	0.00	0.00	0.00
2,900.0	0.00	0.00	2,900.0	0.0	0.0	0.0	0.00	0.00	0.00
3,000.0	0.00	0.00	3,000.0	0.0	0.0	0.0	0.00	0.00	0.00
3,100.0	0.00	0.00	3,100.0	0.0	0.0	0.0	0.00	0.00	0.00
3,200.0	0.00	0.00	3,200.0	0.0	0.0	0.0	0.00	0.00	0.00
3,300.0	0.00	0.00	3,300.0	0.0	0.0	0.0	0.00	0.00	0.00
3,400.0	0.00	0.00	3,400.0	0.0	0.0	0.0	0.00	0.00	0.00
3,500.0	0.00	0.00	3,500.0	0.0	0.0	0.0	0.00	0.00	0.00
3,600.0	0.00	0.00	3,600.0	0.0	0.0	0.0	0.00	0.00	0.00
3,700.0	0.00	0.00	3,700.0	0.0	0.0	0.0	0.00	0.00	0.00
3,800.0	0.00	0.00	3,800.0	0.0	0.0	0.0	0.00	0.00	0.00
3,900.0	0.00	0.00	3,900.0	0.0	0.0	0.0	0.00	0.00	0.00
4,000.0	0.00	0.00	4,000.0	0.0	0.0	0.0	0.00	0.00	0.00
4,100.0	0.00	0.00	4,100.0	0.0	0.0	0.0	0.00	0.00	0.00
4,200.0	0.00	0.00	4,200.0	0.0	0.0	0.0	0.00	0.00	0.00
4,300.0	0.00	0.00	4,300.0	0.0	0.0	0.0	0.00	0.00	0.00
4,400.0	0.00	0.00	4,400.0	0.0	0.0	0.0	0.00	0.00	0.00
4,500.0	0.00	0.00	4,500.0	0.0	0.0	0.0	0.00	0.00	0.00
4,600.0	0.00	0.00	4,600.0	0.0	0.0	0.0	0.00	0.00	0.00
4,700.0	0.00	0.00	4,700.0	0.0	0.0	0.0	0.00	0.00	0.00
4,800.0	0.00	0.00	4,800.0	0.0	0.0	0.0	0.00	0.00	0.00
4,900.0	0.00	0.00	4,900.0	0.0	0.0	0.0	0.00	0.00	0.00
5,000.0	0.00	0.00	5,000.0	0.0	0.0	0.0	0.00	0.00	0.00
5,100.0	0.00	0.00	5,100.0	0.0	0.0	0.0	0.00	0.00	0.00

# EOG Resources, Inc.

## Planning Report

<b>Database:</b>	EDM_DENVER	<b>Local Co-ordinate Reference:</b>	Well Critter Creek 550-2008H
<b>Company:</b>	Denver Division- Colorado	<b>TVD Reference:</b>	RKB @ 5334.0usft (KB GL+25')
<b>Project:</b>	DJ - Hereford Ranch	<b>MD Reference:</b>	RKB @ 5334.0usft (KB GL+25')
<b>Site:</b>	Critter Creek C20 NENW Pad	<b>North Reference:</b>	True
<b>Well:</b>	Critter Creek 550-2008H	<b>Survey Calculation Method:</b>	Minimum Curvature
<b>Wellbore:</b>	OH		
<b>Design:</b>	APD Plan (Plat Cert 4/20/15)		

Planned Survey									
Measured Depth (usft)	Inclination (°)	Azimuth (°)	Vertical Depth (usft)	+N/-S (usft)	+E/-W (usft)	Vertical Section (usft)	Dogleg Rate (°/100usft)	Build Rate (°/100usft)	Turn Rate (°/100usft)
5,200.0	0.00	0.00	5,200.0	0.0	0.0	0.0	0.00	0.00	0.00
5,300.0	0.00	0.00	5,300.0	0.0	0.0	0.0	0.00	0.00	0.00
5,400.0	0.00	0.00	5,400.0	0.0	0.0	0.0	0.00	0.00	0.00
5,500.0	0.00	0.00	5,500.0	0.0	0.0	0.0	0.00	0.00	0.00
5,600.0	0.00	0.00	5,600.0	0.0	0.0	0.0	0.00	0.00	0.00
5,700.0	0.00	0.00	5,700.0	0.0	0.0	0.0	0.00	0.00	0.00
5,800.0	0.00	0.00	5,800.0	0.0	0.0	0.0	0.00	0.00	0.00
5,900.0	0.00	0.00	5,900.0	0.0	0.0	0.0	0.00	0.00	0.00
6,000.0	0.00	0.00	6,000.0	0.0	0.0	0.0	0.00	0.00	0.00
6,100.0	0.00	0.00	6,100.0	0.0	0.0	0.0	0.00	0.00	0.00
6,200.0	0.00	0.00	6,200.0	0.0	0.0	0.0	0.00	0.00	0.00
6,300.0	0.00	0.00	6,300.0	0.0	0.0	0.0	0.00	0.00	0.00
6,400.0	0.00	0.00	6,400.0	0.0	0.0	0.0	0.00	0.00	0.00
6,500.0	0.00	0.00	6,500.0	0.0	0.0	0.0	0.00	0.00	0.00
6,600.0	0.00	0.00	6,600.0	0.0	0.0	0.0	0.00	0.00	0.00
6,700.0	0.00	0.00	6,700.0	0.0	0.0	0.0	0.00	0.00	0.00
6,800.0	0.00	0.00	6,800.0	0.0	0.0	0.0	0.00	0.00	0.00
6,900.0	0.00	0.00	6,900.0	0.0	0.0	0.0	0.00	0.00	0.00
7,000.0	0.00	0.00	7,000.0	0.0	0.0	0.0	0.00	0.00	0.00
7,100.0	0.00	0.00	7,100.0	0.0	0.0	0.0	0.00	0.00	0.00
7,200.0	0.00	0.00	7,200.0	0.0	0.0	0.0	0.00	0.00	0.00
7,265.5	0.00	0.00	7,265.5	0.0	0.0	0.0	0.00	0.00	0.00
7,300.0	4.14	27.00	7,300.0	1.1	0.6	1.1	12.00	12.00	0.00
7,400.0	16.14	27.00	7,398.2	16.8	8.5	17.1	12.00	12.00	0.00
7,500.0	28.14	27.00	7,490.7	50.3	25.6	51.3	12.00	12.00	0.00
7,600.0	40.14	27.00	7,573.3	100.2	51.1	102.2	12.00	12.00	0.00
7,700.0	52.14	27.00	7,642.5	164.3	83.7	167.6	12.00	12.00	0.00
7,800.0	64.14	27.00	7,695.2	239.9	122.2	244.6	12.00	12.00	0.00
7,900.0	76.14	27.00	7,729.1	323.5	164.8	329.9	12.00	12.00	0.00
8,000.0	88.14	27.00	7,742.7	411.6	209.7	419.8	12.00	12.00	0.00
8,015.5	90.00	27.00	7,743.0	425.4	216.8	433.9	12.00	12.00	0.00
8,016.0	90.00	26.99	7,743.0	425.9	217.0	434.3	3.00	0.00	-3.00
7" Intermediate (Opt 2)									
8,100.0	90.00	24.47	7,743.0	501.5	253.4	511.4	3.00	0.00	-3.00
8,200.0	90.00	21.47	7,743.0	593.6	292.5	605.0	3.00	0.00	-3.00
8,300.0	90.00	18.47	7,743.0	687.6	326.6	700.3	3.00	0.00	-3.00
8,400.0	90.00	15.47	7,743.0	783.2	355.8	797.0	3.00	0.00	-3.00
8,500.0	90.00	12.47	7,743.0	880.3	379.9	894.9	3.00	0.00	-3.00
8,600.0	90.00	9.47	7,743.0	978.4	398.9	993.8	3.00	0.00	-3.00
8,700.0	90.00	6.47	7,743.0	1,077.4	412.8	1,093.3	3.00	0.00	-3.00
8,800.0	90.00	3.47	7,743.0	1,177.1	421.4	1,193.2	3.00	0.00	-3.00
8,900.0	90.00	0.47	7,743.0	1,277.0	424.9	1,293.2	3.00	0.00	-3.00
8,915.5	90.00	360.00	7,743.0	1,292.5	424.9	1,308.7	3.00	0.00	-3.00
9,000.0	90.00	360.00	7,743.0	1,377.0	424.9	1,393.1	0.00	0.00	0.00
9,100.0	90.00	360.00	7,743.0	1,477.0	424.9	1,493.0	0.00	0.00	0.00
9,200.0	90.00	360.00	7,743.0	1,577.0	424.9	1,592.9	0.00	0.00	0.00
9,300.0	90.00	360.00	7,743.0	1,677.0	424.9	1,692.8	0.00	0.00	0.00
9,400.0	90.00	360.00	7,743.0	1,777.0	424.9	1,792.8	0.00	0.00	0.00
9,500.0	90.00	360.00	7,743.0	1,877.0	424.9	1,892.7	0.00	0.00	0.00
9,600.0	90.00	360.00	7,743.0	1,977.0	424.9	1,992.6	0.00	0.00	0.00
9,700.0	90.00	360.00	7,743.0	2,077.0	424.9	2,092.5	0.00	0.00	0.00
9,800.0	90.00	360.00	7,743.0	2,177.0	424.9	2,192.4	0.00	0.00	0.00
9,900.0	90.00	360.00	7,743.0	2,277.0	424.9	2,292.3	0.00	0.00	0.00

# EOG Resources, Inc.

## Planning Report

<b>Database:</b>	EDM_DENVER	<b>Local Co-ordinate Reference:</b>	Well Critter Creek 550-2008H
<b>Company:</b>	Denver Division- Colorado	<b>TVD Reference:</b>	RKB @ 5334.0usft (KB GL+25')
<b>Project:</b>	DJ - Hereford Ranch	<b>MD Reference:</b>	RKB @ 5334.0usft (KB GL+25')
<b>Site:</b>	Critter Creek C20 NENW Pad	<b>North Reference:</b>	True
<b>Well:</b>	Critter Creek 550-2008H	<b>Survey Calculation Method:</b>	Minimum Curvature
<b>Wellbore:</b>	OH		
<b>Design:</b>	APD Plan (Plat Cert 4/20/15)		

Planned Survey									
Measured Depth (usft)	Inclination (°)	Azimuth (°)	Vertical Depth (usft)	+N/-S (usft)	+E/-W (usft)	Vertical Section (usft)	Dogleg Rate (°/100usft)	Build Rate (°/100usft)	Turn Rate (°/100usft)
10,000.0	90.00	360.00	7,743.0	2,377.0	424.9	2,392.3	0.00	0.00	0.00
10,100.0	90.00	360.00	7,743.0	2,477.0	424.9	2,492.2	0.00	0.00	0.00
10,200.0	90.00	360.00	7,743.0	2,577.0	424.9	2,592.1	0.00	0.00	0.00
10,300.0	90.00	360.00	7,743.0	2,677.0	424.9	2,692.0	0.00	0.00	0.00
10,400.0	90.00	360.00	7,743.0	2,777.0	424.9	2,791.9	0.00	0.00	0.00
10,500.0	90.00	360.00	7,743.0	2,877.0	424.9	2,891.9	0.00	0.00	0.00
10,600.0	90.00	360.00	7,743.0	2,977.0	424.9	2,991.8	0.00	0.00	0.00
10,700.0	90.00	360.00	7,743.0	3,077.0	424.9	3,091.7	0.00	0.00	0.00
10,800.0	90.00	360.00	7,743.0	3,177.0	424.9	3,191.6	0.00	0.00	0.00
10,900.0	90.00	360.00	7,743.0	3,277.0	424.9	3,291.5	0.00	0.00	0.00
11,000.0	90.00	360.00	7,743.0	3,377.0	424.9	3,391.4	0.00	0.00	0.00
11,100.0	90.00	360.00	7,743.0	3,477.0	424.9	3,491.4	0.00	0.00	0.00
11,200.0	90.00	360.00	7,743.0	3,577.0	424.9	3,591.3	0.00	0.00	0.00
11,300.0	90.00	360.00	7,743.0	3,677.0	424.9	3,691.2	0.00	0.00	0.00
11,400.0	90.00	360.00	7,743.0	3,777.0	424.9	3,791.1	0.00	0.00	0.00
11,500.0	90.00	360.00	7,743.0	3,877.0	424.9	3,891.0	0.00	0.00	0.00
11,600.0	90.00	360.00	7,743.0	3,977.0	424.9	3,990.9	0.00	0.00	0.00
11,700.0	90.00	360.00	7,743.0	4,077.0	424.9	4,090.9	0.00	0.00	0.00
11,800.0	90.00	360.00	7,743.0	4,177.0	424.9	4,190.8	0.00	0.00	0.00
11,900.0	90.00	360.00	7,743.0	4,277.0	424.9	4,290.7	0.00	0.00	0.00
12,000.0	90.00	360.00	7,743.0	4,377.0	424.9	4,390.6	0.00	0.00	0.00
12,100.0	90.00	360.00	7,743.0	4,477.0	424.9	4,490.5	0.00	0.00	0.00
12,200.0	90.00	360.00	7,743.0	4,577.0	424.9	4,590.5	0.00	0.00	0.00
12,300.0	90.00	360.00	7,743.0	4,677.0	424.9	4,690.4	0.00	0.00	0.00
12,400.0	90.00	360.00	7,743.0	4,777.0	424.9	4,790.3	0.00	0.00	0.00
12,500.0	90.00	360.00	7,743.0	4,877.0	424.9	4,890.2	0.00	0.00	0.00
12,600.0	90.00	360.00	7,743.0	4,977.0	424.9	4,990.1	0.00	0.00	0.00
12,700.0	90.00	360.00	7,743.0	5,077.0	424.9	5,090.0	0.00	0.00	0.00
12,800.0	90.00	360.00	7,743.0	5,177.0	424.9	5,190.0	0.00	0.00	0.00
12,900.0	90.00	360.00	7,743.0	5,277.0	424.9	5,289.9	0.00	0.00	0.00
13,000.0	90.00	360.00	7,743.0	5,377.0	424.9	5,389.8	0.00	0.00	0.00
13,100.0	90.00	360.00	7,743.0	5,477.0	424.9	5,489.7	0.00	0.00	0.00
13,200.0	90.00	360.00	7,743.0	5,577.0	424.9	5,589.6	0.00	0.00	0.00
13,300.0	90.00	360.00	7,743.0	5,677.0	424.9	5,689.5	0.00	0.00	0.00
13,400.0	90.00	360.00	7,743.0	5,777.0	424.9	5,789.5	0.00	0.00	0.00
13,500.0	90.00	360.00	7,743.0	5,877.0	424.9	5,889.4	0.00	0.00	0.00
13,600.0	90.00	360.00	7,743.0	5,977.0	424.9	5,989.3	0.00	0.00	0.00
13,700.0	90.00	360.00	7,743.0	6,077.0	424.9	6,089.2	0.00	0.00	0.00
13,800.0	90.00	360.00	7,743.0	6,177.0	424.9	6,189.1	0.00	0.00	0.00
13,900.0	90.00	360.00	7,743.0	6,277.0	424.9	6,289.1	0.00	0.00	0.00
14,000.0	90.00	360.00	7,743.0	6,377.0	424.9	6,389.0	0.00	0.00	0.00
14,100.0	90.00	360.00	7,743.0	6,477.0	424.9	6,488.9	0.00	0.00	0.00
14,200.0	90.00	360.00	7,743.0	6,577.0	424.9	6,588.8	0.00	0.00	0.00
14,300.0	90.00	360.00	7,743.0	6,677.0	424.9	6,688.7	0.00	0.00	0.00
14,400.0	90.00	360.00	7,743.0	6,777.0	424.9	6,788.6	0.00	0.00	0.00
14,500.0	90.00	360.00	7,743.0	6,877.0	424.9	6,888.6	0.00	0.00	0.00
14,600.0	90.00	360.00	7,743.0	6,977.0	424.9	6,988.5	0.00	0.00	0.00
14,700.0	90.00	360.00	7,743.0	7,077.0	424.9	7,088.4	0.00	0.00	0.00
14,800.0	90.00	360.00	7,743.0	7,177.0	424.9	7,188.3	0.00	0.00	0.00
14,900.0	90.00	360.00	7,743.0	7,277.0	424.9	7,288.2	0.00	0.00	0.00
15,000.0	90.00	360.00	7,743.0	7,377.0	424.9	7,388.1	0.00	0.00	0.00
15,100.0	90.00	360.00	7,743.0	7,477.0	424.9	7,488.1	0.00	0.00	0.00
15,200.0	90.00	360.00	7,743.0	7,577.0	424.9	7,588.0	0.00	0.00	0.00
15,300.0	90.00	360.00	7,743.0	7,677.0	424.9	7,687.9	0.00	0.00	0.00

# EOG Resources, Inc.

## Planning Report

<b>Database:</b>	EDM_DENVER	<b>Local Co-ordinate Reference:</b>	Well Critter Creek 550-2008H
<b>Company:</b>	Denver Division- Colorado	<b>TVD Reference:</b>	RKB @ 5334.0usft (KB GL+25')
<b>Project:</b>	DJ - Hereford Ranch	<b>MD Reference:</b>	RKB @ 5334.0usft (KB GL+25')
<b>Site:</b>	Critter Creek C20 NENW Pad	<b>North Reference:</b>	True
<b>Well:</b>	Critter Creek 550-2008H	<b>Survey Calculation Method:</b>	Minimum Curvature
<b>Wellbore:</b>	OH		
<b>Design:</b>	APD Plan (Plat Cert 4/20/15)		

Planned Survey										
Measured Depth (usft)	Inclination (°)	Azimuth (°)	Vertical Depth (usft)	+N/-S (usft)	+E/-W (usft)	Vertical Section (usft)	Dogleg Rate (°/100usft)	Build Rate (°/100usft)	Turn Rate (°/100usft)	
15,400.0	90.00	360.00	7,743.0	7,777.0	424.9	7,787.8	0.00	0.00	0.00	
15,500.0	90.00	360.00	7,743.0	7,877.0	424.9	7,887.7	0.00	0.00	0.00	
15,600.0	90.00	360.00	7,743.0	7,977.0	424.9	7,987.7	0.00	0.00	0.00	
15,700.0	90.00	360.00	7,743.0	8,077.0	424.9	8,087.6	0.00	0.00	0.00	
15,800.0	90.00	360.00	7,743.0	8,177.0	424.9	8,187.5	0.00	0.00	0.00	
15,900.0	90.00	360.00	7,743.0	8,277.0	424.9	8,287.4	0.00	0.00	0.00	
16,000.0	90.00	360.00	7,743.0	8,377.0	424.9	8,387.3	0.00	0.00	0.00	
16,100.0	90.00	360.00	7,743.0	8,477.0	424.9	8,487.2	0.00	0.00	0.00	
16,200.0	90.00	360.00	7,743.0	8,577.0	424.9	8,587.2	0.00	0.00	0.00	
16,300.0	90.00	360.00	7,743.0	8,677.0	424.9	8,687.1	0.00	0.00	0.00	
16,400.0	90.00	360.00	7,743.0	8,777.0	424.9	8,787.0	0.00	0.00	0.00	
16,500.0	90.00	360.00	7,743.0	8,877.0	424.9	8,886.9	0.00	0.00	0.00	
16,600.0	90.00	360.00	7,743.0	8,977.0	424.9	8,986.8	0.00	0.00	0.00	
16,700.0	90.00	360.00	7,743.0	9,077.0	424.9	9,086.7	0.00	0.00	0.00	
16,800.0	90.00	360.00	7,743.0	9,177.0	424.9	9,186.7	0.00	0.00	0.00	
16,900.0	90.00	360.00	7,743.0	9,277.0	424.9	9,286.6	0.00	0.00	0.00	
17,000.0	90.00	360.00	7,743.0	9,377.0	424.9	9,386.5	0.00	0.00	0.00	
17,100.0	90.00	360.00	7,743.0	9,477.0	424.9	9,486.4	0.00	0.00	0.00	
17,200.0	90.00	360.00	7,743.0	9,577.0	424.9	9,586.3	0.00	0.00	0.00	
17,300.0	90.00	360.00	7,743.0	9,677.0	424.9	9,686.3	0.00	0.00	0.00	
17,400.0	90.00	360.00	7,743.0	9,777.0	424.9	9,786.2	0.00	0.00	0.00	
17,500.0	90.00	360.00	7,743.0	9,877.0	424.9	9,886.1	0.00	0.00	0.00	
17,600.0	90.00	360.00	7,743.0	9,977.0	424.9	9,986.0	0.00	0.00	0.00	
17,700.0	90.00	360.00	7,743.0	10,077.0	424.9	10,085.9	0.00	0.00	0.00	
17,800.0	90.00	360.00	7,743.0	10,177.0	424.9	10,185.8	0.00	0.00	0.00	
17,900.0	90.00	360.00	7,743.0	10,277.0	424.9	10,285.8	0.00	0.00	0.00	
18,000.0	90.00	360.00	7,743.0	10,377.0	424.9	10,385.7	0.00	0.00	0.00	
18,088.4	90.00	360.00	7,743.0	10,465.4	424.9	10,474.0	0.00	0.00	0.00	
5 1/2" Prod (Opt 1) - 4 1/2" Liner (Opt 2)										

Design Targets										
Target Name	Dip Angle (°)	Dip Dir. (°)	TVD (usft)	+N/-S (usft)	+E/-W (usft)	Northing (usft)	Easting (usft)	Latitude		Longitude
Critter Creek 550-2008H	0.00	0.00	7,743.0	10,465.4	424.9	587,867.75	2,288,008.15	40° 56' 32.792 N		104° 27' 27.217 W
- hit/miss target										
- Shape										
- plan hits target center										
- Point										

Casing Points						
Measured Depth (usft)	Vertical Depth (usft)	Name	Casing Diameter (")	Hole Diameter (")		
1,529.0	1,529.0	9 5/8" Surface	9-5/8	13-1/2		
8,016.0	7,743.0	7" Intermediate (Opt 2)	7	8-3/4		
18,088.4	7,743.0	5 1/2" Prod (Opt 1)	5-1/2	8-3/4		
18,088.4	7,743.0	4 1/2" Liner (Opt 2)	4-1/2	6-1/8		