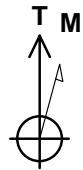
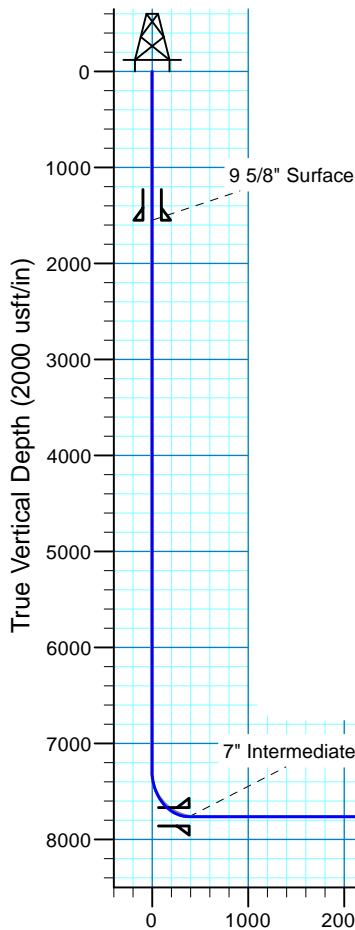


Critter Creek 540-1807H

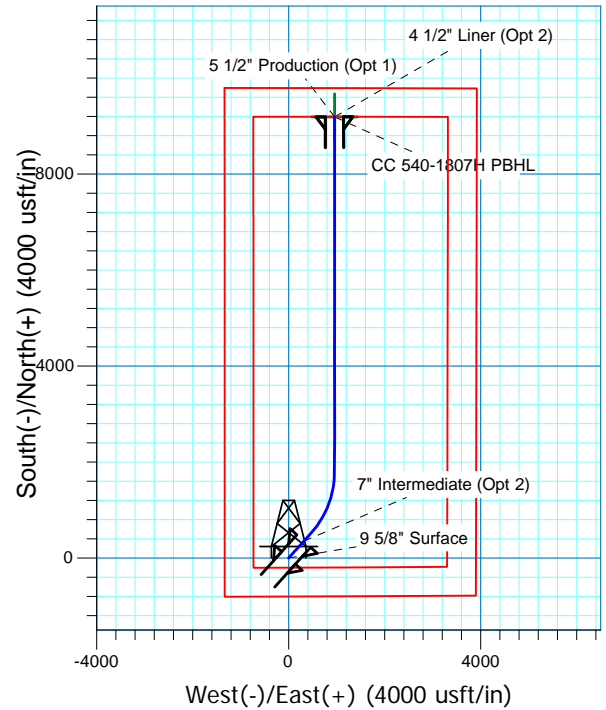
Sec.18-T11N-R63W
Weld County, Colorado

Surface Location

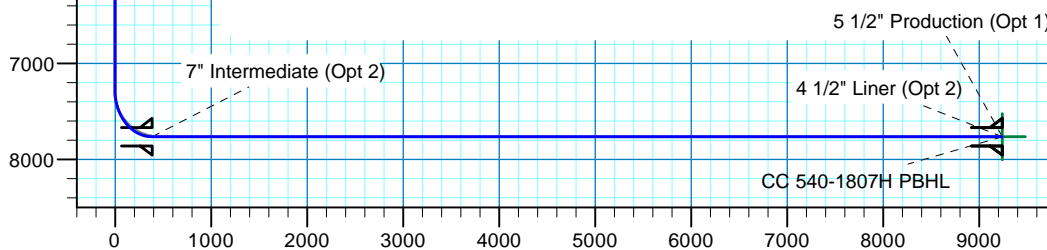
NAD 1927 (NADCON CONUS) Colorado North 501
Ground Elevation: 5339.0 RKB @ 5364.0usft (KB GL+25')
Northing 578611.80 Easting 2281904.73 Latitude 40° 55' 2.045 N Longitude 104° 28' 48.125 W



Azimuths to True North
Magnetic North: 8.32°
Magnetic Field
Strength: 52918.6snT
Dip Angle: 67.36°
Date: 6/1/2015
Model: IGRF2015



Project: DJ - Hereford Ranch
Site: Critter Creek C18 SWSW Pad
Well: Critter Creek 540-1807H
Plan: APD Plan (Plat Cert 4/20/15)



Vertical Section at 5.94° (2000 usft/in)

SECTION DETAILS										
Sec	MD	Inc	Azi	TVD	+N/-S	+E/-W	Dleg	TFace	VSect	Target
1	0.0	0.00	0.00	0.0	0.0	0.0	0.00	0.00	0.0	
2	7287.5	0.00	0.00	7287.5	0.0	0.0	0.00	0.00	0.0	
3	8037.5	90.00	42.00	7765.0	354.8	319.5	12.00	42.00	386.0	
4	8257.5	90.00	42.00	7765.0	518.3	466.7	0.00	0.00	563.8	
5	9657.7	90.00	360.00	7765.0	1796.4	957.3	3.00	-90.00	1885.9	CC 540-1807H PBHL
6	17052.3	90.00	360.00	7765.0	9191.0	956.6	0.00	0.00	9240.7	CC 540-1807H PBHL
TARGET DETAILS										
Name	TVD	+N/-S	+E/-W	Northing	Easting	Latitude	Longitude	Shape		
CC 540-1807H PBHL	7765.0	9191.0	956.6	587813.23	2282755.60	40° 56' 32.858 N	104° 28' 35.660 W	Point		

Denver Division- Colorado

**DJ - Hereford Ranch
Crittter Creek C18 SWSW Pad
Crittter Creek 540-1807H**

OH

Plan: APD Plan (Plat Cert 4/20/15)

Standard Planning Report

12 August, 2015

EOG Resources, Inc.

Planning Report

Database:	EDM_DENVER	Local Co-ordinate Reference:	Well Critter Creek 540-1807H
Company:	Denver Division- Colorado	TVD Reference:	RKB @ 5364.0usft (KB GL+25')
Project:	DJ - Hereford Ranch	MD Reference:	RKB @ 5364.0usft (KB GL+25')
Site:	Critter Creek C18 SWSW Pad	North Reference:	True
Well:	Critter Creek 540-1807H	Survey Calculation Method:	Minimum Curvature
Wellbore:	OH		
Design:	APD Plan (Plat Cert 4/20/15)		

Project	DJ - Hereford Ranch, Weld County		
Map System:	US State Plane 1927 (Exact solution)	System Datum:	Mean Sea Level
Geo Datum:	NAD 1927 (NADCON CONUS)		
Map Zone:	Colorado North 501		

Site	Critter Creek C18 SWSW Pad		
Site Position:		Northing:	578,400.00 usft
From:	Map	Easting:	2,281,800.00 usft
Position Uncertainty:	0.0 usft	Slot Radius:	13-3/16 "
		Latitude:	40° 54' 59.964 N
		Longitude:	104° 28' 49.521 W
		Grid Convergence:	0.66 °

Well	Critter Creek 540-1807H		
Well Position	+N/-S	210.6 usft	Northing:
	+E/-W	107.2 usft	Easting:
Position Uncertainty	0.0 usft		Wellhead Elevation:
			Latitude:
			Longitude:
			Ground Level:

Wellbore	OH				
Magnetics	Model Name	Sample Date	Declination (°)	Dip Angle (°)	Field Strength (nT)
	IGRF2015	6/1/2015	8.32	67.36	52,919

Design	APD Plan (Plat Cert 4/20/15)			
Audit Notes:				
Version:	Phase:	PROTOTYPE	Tie On Depth:	0.0
Vertical Section:	Depth From (TVD) (usft)	+N/-S (usft)	+E/-W (usft)	Direction (°)
	0.0	0.0	0.0	5.94

Plan Sections										
Measured Depth (usft)	Inclination (°)	Azimuth (°)	Vertical Depth (usft)	+N/-S (usft)	+E/-W (usft)	Dogleg Rate (°/100usft)	Build Rate (°/100usft)	Turn Rate (°/100usft)	TFO (°)	Target
0.0	0.00	0.00	0.0	0.0	0.0	0.00	0.00	0.00	0.00	
7,287.5	0.00	0.00	7,287.5	0.0	0.0	0.00	0.00	0.00	0.00	
8,037.5	90.00	42.00	7,765.0	354.8	319.5	12.00	12.00	0.00	42.00	
8,257.5	90.00	42.00	7,765.0	518.3	466.7	0.00	0.00	0.00	0.00	
9,657.7	90.00	360.00	7,765.0	1,796.4	957.3	3.00	0.00	-3.00	-90.00	CC 540-1807H PBHL
17,052.3	90.00	360.00	7,765.0	9,191.0	956.6	0.00	0.00	0.00	0.00	CC 540-1807H PBHL

EOG Resources, Inc.

Planning Report

Database:	EDM_DENVER	Local Co-ordinate Reference:	Well Critter Creek 540-1807H
Company:	Denver Division- Colorado	TVD Reference:	RKB @ 5364.0usft (KB GL+25')
Project:	DJ - Hereford Ranch	MD Reference:	RKB @ 5364.0usft (KB GL+25')
Site:	Critter Creek C18 SWSW Pad	North Reference:	True
Well:	Critter Creek 540-1807H	Survey Calculation Method:	Minimum Curvature
Wellbore:	OH		
Design:	APD Plan (Plat Cert 4/20/15)		

Planned Survey									
Measured Depth (usft)	Inclination (°)	Azimuth (°)	Vertical Depth (usft)	+N/-S (usft)	+E/-W (usft)	Vertical Section (usft)	Dogleg Rate (°/100usft)	Build Rate (°/100usft)	Turn Rate (°/100usft)
0.0	0.00	0.00	0.0	0.0	0.0	0.0	0.00	0.00	0.00
100.0	0.00	0.00	100.0	0.0	0.0	0.0	0.00	0.00	0.00
200.0	0.00	0.00	200.0	0.0	0.0	0.0	0.00	0.00	0.00
300.0	0.00	0.00	300.0	0.0	0.0	0.0	0.00	0.00	0.00
400.0	0.00	0.00	400.0	0.0	0.0	0.0	0.00	0.00	0.00
500.0	0.00	0.00	500.0	0.0	0.0	0.0	0.00	0.00	0.00
600.0	0.00	0.00	600.0	0.0	0.0	0.0	0.00	0.00	0.00
700.0	0.00	0.00	700.0	0.0	0.0	0.0	0.00	0.00	0.00
800.0	0.00	0.00	800.0	0.0	0.0	0.0	0.00	0.00	0.00
900.0	0.00	0.00	900.0	0.0	0.0	0.0	0.00	0.00	0.00
1,000.0	0.00	0.00	1,000.0	0.0	0.0	0.0	0.00	0.00	0.00
1,100.0	0.00	0.00	1,100.0	0.0	0.0	0.0	0.00	0.00	0.00
1,200.0	0.00	0.00	1,200.0	0.0	0.0	0.0	0.00	0.00	0.00
1,300.0	0.00	0.00	1,300.0	0.0	0.0	0.0	0.00	0.00	0.00
1,400.0	0.00	0.00	1,400.0	0.0	0.0	0.0	0.00	0.00	0.00
1,500.0	0.00	0.00	1,500.0	0.0	0.0	0.0	0.00	0.00	0.00
1,551.0	0.00	0.00	1,551.0	0.0	0.0	0.0	0.00	0.00	0.00
9 5/8" Surface									
1,600.0	0.00	0.00	1,600.0	0.0	0.0	0.0	0.00	0.00	0.00
1,700.0	0.00	0.00	1,700.0	0.0	0.0	0.0	0.00	0.00	0.00
1,800.0	0.00	0.00	1,800.0	0.0	0.0	0.0	0.00	0.00	0.00
1,900.0	0.00	0.00	1,900.0	0.0	0.0	0.0	0.00	0.00	0.00
2,000.0	0.00	0.00	2,000.0	0.0	0.0	0.0	0.00	0.00	0.00
2,100.0	0.00	0.00	2,100.0	0.0	0.0	0.0	0.00	0.00	0.00
2,200.0	0.00	0.00	2,200.0	0.0	0.0	0.0	0.00	0.00	0.00
2,300.0	0.00	0.00	2,300.0	0.0	0.0	0.0	0.00	0.00	0.00
2,400.0	0.00	0.00	2,400.0	0.0	0.0	0.0	0.00	0.00	0.00
2,500.0	0.00	0.00	2,500.0	0.0	0.0	0.0	0.00	0.00	0.00
2,600.0	0.00	0.00	2,600.0	0.0	0.0	0.0	0.00	0.00	0.00
2,700.0	0.00	0.00	2,700.0	0.0	0.0	0.0	0.00	0.00	0.00
2,800.0	0.00	0.00	2,800.0	0.0	0.0	0.0	0.00	0.00	0.00
2,900.0	0.00	0.00	2,900.0	0.0	0.0	0.0	0.00	0.00	0.00
3,000.0	0.00	0.00	3,000.0	0.0	0.0	0.0	0.00	0.00	0.00
3,100.0	0.00	0.00	3,100.0	0.0	0.0	0.0	0.00	0.00	0.00
3,200.0	0.00	0.00	3,200.0	0.0	0.0	0.0	0.00	0.00	0.00
3,300.0	0.00	0.00	3,300.0	0.0	0.0	0.0	0.00	0.00	0.00
3,400.0	0.00	0.00	3,400.0	0.0	0.0	0.0	0.00	0.00	0.00
3,500.0	0.00	0.00	3,500.0	0.0	0.0	0.0	0.00	0.00	0.00
3,600.0	0.00	0.00	3,600.0	0.0	0.0	0.0	0.00	0.00	0.00
3,700.0	0.00	0.00	3,700.0	0.0	0.0	0.0	0.00	0.00	0.00
3,800.0	0.00	0.00	3,800.0	0.0	0.0	0.0	0.00	0.00	0.00
3,900.0	0.00	0.00	3,900.0	0.0	0.0	0.0	0.00	0.00	0.00
4,000.0	0.00	0.00	4,000.0	0.0	0.0	0.0	0.00	0.00	0.00
4,100.0	0.00	0.00	4,100.0	0.0	0.0	0.0	0.00	0.00	0.00
4,200.0	0.00	0.00	4,200.0	0.0	0.0	0.0	0.00	0.00	0.00
4,300.0	0.00	0.00	4,300.0	0.0	0.0	0.0	0.00	0.00	0.00
4,400.0	0.00	0.00	4,400.0	0.0	0.0	0.0	0.00	0.00	0.00
4,500.0	0.00	0.00	4,500.0	0.0	0.0	0.0	0.00	0.00	0.00
4,600.0	0.00	0.00	4,600.0	0.0	0.0	0.0	0.00	0.00	0.00
4,700.0	0.00	0.00	4,700.0	0.0	0.0	0.0	0.00	0.00	0.00
4,800.0	0.00	0.00	4,800.0	0.0	0.0	0.0	0.00	0.00	0.00
4,900.0	0.00	0.00	4,900.0	0.0	0.0	0.0	0.00	0.00	0.00
5,000.0	0.00	0.00	5,000.0	0.0	0.0	0.0	0.00	0.00	0.00
5,100.0	0.00	0.00	5,100.0	0.0	0.0	0.0	0.00	0.00	0.00

EOG Resources, Inc.

Planning Report

Database:	EDM_DENVER	Local Co-ordinate Reference:	Well Critter Creek 540-1807H
Company:	Denver Division- Colorado	TVD Reference:	RKB @ 5364.0usft (KB GL+25')
Project:	DJ - Hereford Ranch	MD Reference:	RKB @ 5364.0usft (KB GL+25')
Site:	Critter Creek C18 SWSW Pad	North Reference:	True
Well:	Critter Creek 540-1807H	Survey Calculation Method:	Minimum Curvature
Wellbore:	OH		
Design:	APD Plan (Plat Cert 4/20/15)		

Planned Survey									
Measured Depth (usft)	Inclination (°)	Azimuth (°)	Vertical Depth (usft)	+N/-S (usft)	+E/-W (usft)	Vertical Section (usft)	Dogleg Rate (°/100usft)	Build Rate (°/100usft)	Turn Rate (°/100usft)
5,200.0	0.00	0.00	5,200.0	0.0	0.0	0.0	0.00	0.00	0.00
5,300.0	0.00	0.00	5,300.0	0.0	0.0	0.0	0.00	0.00	0.00
5,400.0	0.00	0.00	5,400.0	0.0	0.0	0.0	0.00	0.00	0.00
5,500.0	0.00	0.00	5,500.0	0.0	0.0	0.0	0.00	0.00	0.00
5,600.0	0.00	0.00	5,600.0	0.0	0.0	0.0	0.00	0.00	0.00
5,700.0	0.00	0.00	5,700.0	0.0	0.0	0.0	0.00	0.00	0.00
5,800.0	0.00	0.00	5,800.0	0.0	0.0	0.0	0.00	0.00	0.00
5,900.0	0.00	0.00	5,900.0	0.0	0.0	0.0	0.00	0.00	0.00
6,000.0	0.00	0.00	6,000.0	0.0	0.0	0.0	0.00	0.00	0.00
6,100.0	0.00	0.00	6,100.0	0.0	0.0	0.0	0.00	0.00	0.00
6,200.0	0.00	0.00	6,200.0	0.0	0.0	0.0	0.00	0.00	0.00
6,300.0	0.00	0.00	6,300.0	0.0	0.0	0.0	0.00	0.00	0.00
6,400.0	0.00	0.00	6,400.0	0.0	0.0	0.0	0.00	0.00	0.00
6,500.0	0.00	0.00	6,500.0	0.0	0.0	0.0	0.00	0.00	0.00
6,600.0	0.00	0.00	6,600.0	0.0	0.0	0.0	0.00	0.00	0.00
6,700.0	0.00	0.00	6,700.0	0.0	0.0	0.0	0.00	0.00	0.00
6,800.0	0.00	0.00	6,800.0	0.0	0.0	0.0	0.00	0.00	0.00
6,900.0	0.00	0.00	6,900.0	0.0	0.0	0.0	0.00	0.00	0.00
7,000.0	0.00	0.00	7,000.0	0.0	0.0	0.0	0.00	0.00	0.00
7,100.0	0.00	0.00	7,100.0	0.0	0.0	0.0	0.00	0.00	0.00
7,200.0	0.00	0.00	7,200.0	0.0	0.0	0.0	0.00	0.00	0.00
7,287.5	0.00	0.00	7,287.5	0.0	0.0	0.0	0.00	0.00	0.00
7,300.0	1.50	42.00	7,300.0	0.1	0.1	0.1	12.00	12.00	0.00
7,400.0	13.50	42.00	7,399.0	9.8	8.8	10.7	12.00	12.00	0.00
7,500.0	25.50	42.00	7,493.1	34.6	31.1	37.6	12.00	12.00	0.00
7,600.0	37.50	42.00	7,578.2	73.3	66.0	79.8	12.00	12.00	0.00
7,700.0	49.50	42.00	7,650.6	124.4	112.0	135.3	12.00	12.00	0.00
7,800.0	61.50	42.00	7,707.1	185.5	167.0	201.8	12.00	12.00	0.00
7,900.0	73.50	42.00	7,745.3	254.0	228.7	276.4	12.00	12.00	0.00
8,000.0	85.50	42.00	7,763.5	327.0	294.4	355.7	12.00	12.00	0.00
8,037.5	90.00	42.00	7,765.0	354.8	319.5	386.0	12.00	12.00	0.00
8,038.0	90.00	42.00	7,765.0	355.2	319.8	386.4	0.00	0.00	0.00
7" Intermediate (Opt 2)									
8,100.0	90.00	42.00	7,765.0	401.3	361.3	436.5	0.00	0.00	0.00
8,200.0	90.00	42.00	7,765.0	475.6	428.2	517.4	0.00	0.00	0.00
8,257.5	90.00	42.00	7,765.0	518.3	466.7	563.8	0.00	0.00	0.00
8,300.0	90.00	40.73	7,765.0	550.2	494.8	598.5	3.00	0.00	-3.00
8,400.0	90.00	37.73	7,765.0	627.7	558.0	682.1	3.00	0.00	-3.00
8,500.0	90.00	34.73	7,765.0	708.3	617.1	768.4	3.00	0.00	-3.00
8,600.0	90.00	31.73	7,765.0	792.0	671.9	857.3	3.00	0.00	-3.00
8,700.0	90.00	28.73	7,765.0	878.4	722.2	948.4	3.00	0.00	-3.00
8,800.0	90.00	25.73	7,765.0	967.3	768.0	1,041.6	3.00	0.00	-3.00
8,900.0	90.00	22.73	7,765.0	1,058.5	809.0	1,136.5	3.00	0.00	-3.00
9,000.0	90.00	19.73	7,765.0	1,151.7	845.2	1,233.0	3.00	0.00	-3.00
9,100.0	90.00	16.73	7,765.0	1,246.6	876.5	1,330.7	3.00	0.00	-3.00
9,200.0	90.00	13.73	7,765.0	1,343.1	902.7	1,429.4	3.00	0.00	-3.00
9,300.0	90.00	10.73	7,765.0	1,440.8	923.9	1,528.8	3.00	0.00	-3.00
9,400.0	90.00	7.73	7,765.0	1,539.5	939.9	1,628.6	3.00	0.00	-3.00
9,500.0	90.00	4.73	7,765.0	1,638.9	950.8	1,728.6	3.00	0.00	-3.00
9,600.0	90.00	1.73	7,765.0	1,738.8	956.4	1,828.4	3.00	0.00	-3.00
9,657.7	90.00	360.00	7,765.0	1,796.4	957.3	1,885.9	3.00	0.00	-3.00
9,700.0	90.00	360.00	7,765.0	1,838.8	957.2	1,928.0	0.00	0.00	0.00
9,800.0	90.00	360.00	7,765.0	1,938.8	957.2	2,027.4	0.00	0.00	0.00

EOG Resources, Inc.

Planning Report

Database:	EDM_DENVER	Local Co-ordinate Reference:	Well Critter Creek 540-1807H
Company:	Denver Division- Colorado	TVD Reference:	RKB @ 5364.0usft (KB GL+25')
Project:	DJ - Hereford Ranch	MD Reference:	RKB @ 5364.0usft (KB GL+25')
Site:	Critter Creek C18 SWSW Pad	North Reference:	True
Well:	Critter Creek 540-1807H	Survey Calculation Method:	Minimum Curvature
Wellbore:	OH		
Design:	APD Plan (Plat Cert 4/20/15)		

Planned Survey									
Measured Depth (usft)	Inclination (°)	Azimuth (°)	Vertical Depth (usft)	+N/-S (usft)	+E/-W (usft)	Vertical Section (usft)	Dogleg Rate (°/100usft)	Build Rate (°/100usft)	Turn Rate (°/100usft)
9,900.0	90.00	360.00	7,765.0	2,038.8	957.2	2,126.9	0.00	0.00	0.00
10,000.0	90.00	360.00	7,765.0	2,138.8	957.2	2,226.4	0.00	0.00	0.00
10,100.0	90.00	360.00	7,765.0	2,238.8	957.2	2,325.8	0.00	0.00	0.00
10,200.0	90.00	360.00	7,765.0	2,338.8	957.2	2,425.3	0.00	0.00	0.00
10,300.0	90.00	360.00	7,765.0	2,438.8	957.2	2,524.8	0.00	0.00	0.00
10,400.0	90.00	360.00	7,765.0	2,538.8	957.2	2,624.2	0.00	0.00	0.00
10,500.0	90.00	360.00	7,765.0	2,638.8	957.2	2,723.7	0.00	0.00	0.00
10,600.0	90.00	360.00	7,765.0	2,738.8	957.2	2,823.1	0.00	0.00	0.00
10,700.0	90.00	360.00	7,765.0	2,838.8	957.2	2,922.6	0.00	0.00	0.00
10,800.0	90.00	360.00	7,765.0	2,938.8	957.2	3,022.1	0.00	0.00	0.00
10,900.0	90.00	360.00	7,765.0	3,038.8	957.2	3,121.5	0.00	0.00	0.00
11,000.0	90.00	360.00	7,765.0	3,138.8	957.1	3,221.0	0.00	0.00	0.00
11,100.0	90.00	360.00	7,765.0	3,238.8	957.1	3,320.4	0.00	0.00	0.00
11,200.0	90.00	360.00	7,765.0	3,338.8	957.1	3,419.9	0.00	0.00	0.00
11,300.0	90.00	360.00	7,765.0	3,438.8	957.1	3,519.4	0.00	0.00	0.00
11,400.0	90.00	360.00	7,765.0	3,538.8	957.1	3,618.8	0.00	0.00	0.00
11,500.0	90.00	360.00	7,765.0	3,638.8	957.1	3,718.3	0.00	0.00	0.00
11,600.0	90.00	360.00	7,765.0	3,738.8	957.1	3,817.8	0.00	0.00	0.00
11,700.0	90.00	360.00	7,765.0	3,838.8	957.1	3,917.2	0.00	0.00	0.00
11,800.0	90.00	360.00	7,765.0	3,938.8	957.1	4,016.7	0.00	0.00	0.00
11,900.0	90.00	360.00	7,765.0	4,038.8	957.1	4,116.1	0.00	0.00	0.00
12,000.0	90.00	360.00	7,765.0	4,138.8	957.1	4,215.6	0.00	0.00	0.00
12,100.0	90.00	360.00	7,765.0	4,238.8	957.1	4,315.1	0.00	0.00	0.00
12,200.0	90.00	360.00	7,765.0	4,338.8	957.0	4,414.5	0.00	0.00	0.00
12,300.0	90.00	360.00	7,765.0	4,438.8	957.0	4,514.0	0.00	0.00	0.00
12,400.0	90.00	360.00	7,765.0	4,538.8	957.0	4,613.5	0.00	0.00	0.00
12,500.0	90.00	360.00	7,765.0	4,638.8	957.0	4,712.9	0.00	0.00	0.00
12,600.0	90.00	360.00	7,765.0	4,738.8	957.0	4,812.4	0.00	0.00	0.00
12,700.0	90.00	360.00	7,765.0	4,838.8	957.0	4,911.8	0.00	0.00	0.00
12,800.0	90.00	360.00	7,765.0	4,938.8	957.0	5,011.3	0.00	0.00	0.00
12,900.0	90.00	360.00	7,765.0	5,038.8	957.0	5,110.8	0.00	0.00	0.00
13,000.0	90.00	360.00	7,765.0	5,138.8	957.0	5,210.2	0.00	0.00	0.00
13,100.0	90.00	360.00	7,765.0	5,238.8	957.0	5,309.7	0.00	0.00	0.00
13,200.0	90.00	360.00	7,765.0	5,338.8	957.0	5,409.1	0.00	0.00	0.00
13,300.0	90.00	360.00	7,765.0	5,438.8	957.0	5,508.6	0.00	0.00	0.00
13,400.0	90.00	360.00	7,765.0	5,538.8	956.9	5,608.1	0.00	0.00	0.00
13,500.0	90.00	360.00	7,765.0	5,638.8	956.9	5,707.5	0.00	0.00	0.00
13,600.0	90.00	360.00	7,765.0	5,738.8	956.9	5,807.0	0.00	0.00	0.00
13,700.0	90.00	360.00	7,765.0	5,838.8	956.9	5,906.5	0.00	0.00	0.00
13,800.0	90.00	360.00	7,765.0	5,938.8	956.9	6,005.9	0.00	0.00	0.00
13,900.0	90.00	360.00	7,765.0	6,038.8	956.9	6,105.4	0.00	0.00	0.00
14,000.0	90.00	360.00	7,765.0	6,138.8	956.9	6,204.8	0.00	0.00	0.00
14,100.0	90.00	360.00	7,765.0	6,238.8	956.9	6,304.3	0.00	0.00	0.00
14,200.0	90.00	360.00	7,765.0	6,338.8	956.9	6,403.8	0.00	0.00	0.00
14,300.0	90.00	360.00	7,765.0	6,438.8	956.9	6,503.2	0.00	0.00	0.00
14,400.0	90.00	360.00	7,765.0	6,538.8	956.9	6,602.7	0.00	0.00	0.00
14,500.0	90.00	360.00	7,765.0	6,638.8	956.9	6,702.2	0.00	0.00	0.00
14,600.0	90.00	360.00	7,765.0	6,738.8	956.8	6,801.6	0.00	0.00	0.00
14,700.0	90.00	360.00	7,765.0	6,838.8	956.8	6,901.1	0.00	0.00	0.00
14,800.0	90.00	360.00	7,765.0	6,938.8	956.8	7,000.5	0.00	0.00	0.00
14,900.0	90.00	360.00	7,765.0	7,038.8	956.8	7,100.0	0.00	0.00	0.00
15,000.0	90.00	360.00	7,765.0	7,138.8	956.8	7,199.5	0.00	0.00	0.00
15,100.0	90.00	360.00	7,765.0	7,238.8	956.8	7,298.9	0.00	0.00	0.00
15,200.0	90.00	360.00	7,765.0	7,338.8	956.8	7,398.4	0.00	0.00	0.00

EOG Resources, Inc.

Planning Report

Database:	EDM_DENVER	Local Co-ordinate Reference:	Well Critter Creek 540-1807H
Company:	Denver Division- Colorado	TVD Reference:	RKB @ 5364.0usft (KB GL+25')
Project:	DJ - Hereford Ranch	MD Reference:	RKB @ 5364.0usft (KB GL+25')
Site:	Critter Creek C18 SWSW Pad	North Reference:	True
Well:	Critter Creek 540-1807H	Survey Calculation Method:	Minimum Curvature
Wellbore:	OH		
Design:	APD Plan (Plat Cert 4/20/15)		

Planned Survey										
Measured Depth (usft)	Inclination (°)	Azimuth (°)	Vertical Depth (usft)	+N/-S (usft)	+E/-W (usft)	Vertical Section (usft)	Dogleg Rate (°/100usft)	Build Rate (°/100usft)	Turn Rate (°/100usft)	
15,300.0	90.00	360.00	7,765.0	7,438.8	956.8	7,497.8	0.00	0.00	0.00	
15,400.0	90.00	360.00	7,765.0	7,538.8	956.8	7,597.3	0.00	0.00	0.00	
15,500.0	90.00	360.00	7,765.0	7,638.8	956.8	7,696.8	0.00	0.00	0.00	
15,600.0	90.00	360.00	7,765.0	7,738.8	956.8	7,796.2	0.00	0.00	0.00	
15,700.0	90.00	360.00	7,765.0	7,838.8	956.8	7,895.7	0.00	0.00	0.00	
15,800.0	90.00	360.00	7,765.0	7,938.8	956.8	7,995.2	0.00	0.00	0.00	
15,900.0	90.00	360.00	7,765.0	8,038.8	956.7	8,094.6	0.00	0.00	0.00	
16,000.0	90.00	360.00	7,765.0	8,138.8	956.7	8,194.1	0.00	0.00	0.00	
16,100.0	90.00	360.00	7,765.0	8,238.8	956.7	8,293.5	0.00	0.00	0.00	
16,200.0	90.00	360.00	7,765.0	8,338.8	956.7	8,393.0	0.00	0.00	0.00	
16,300.0	90.00	360.00	7,765.0	8,438.8	956.7	8,492.5	0.00	0.00	0.00	
16,400.0	90.00	360.00	7,765.0	8,538.8	956.7	8,591.9	0.00	0.00	0.00	
16,500.0	90.00	360.00	7,765.0	8,638.8	956.7	8,691.4	0.00	0.00	0.00	
16,600.0	90.00	360.00	7,765.0	8,738.8	956.7	8,790.8	0.00	0.00	0.00	
16,700.0	90.00	360.00	7,765.0	8,838.8	956.7	8,890.3	0.00	0.00	0.00	
16,800.0	90.00	360.00	7,765.0	8,938.8	956.7	8,989.8	0.00	0.00	0.00	
16,900.0	90.00	360.00	7,765.0	9,038.8	956.7	9,089.2	0.00	0.00	0.00	
17,000.0	90.00	360.00	7,765.0	9,138.8	956.7	9,188.7	0.00	0.00	0.00	
17,052.3	90.00	360.00	7,765.0	9,191.0	956.6	9,240.7	0.00	0.00	0.00	

Design Targets										
Target Name - hit/miss target - Shape	Dip Angle (°)	Dip Dir. (°)	TVD (usft)	+N/-S (usft)	+E/-W (usft)	Northing (usft)	Easting (usft)	Latitude		Longitude
CC 540-1807H PBHL - plan hits target center - Point	0.00	0.00	7,765.0	9,191.0	956.6	587,813.23	2,282,755.60	40° 56' 32.858 N		104° 28' 35.660 W

Casing Points					
Measured Depth (usft)	Vertical Depth (usft)	Name	Casing Diameter (")	Hole Diameter (")	
1,551.0	1,551.0	9 5/8" Surface	9-5/8	13-1/2	
8,038.0	7,765.0	7" Intermediate (Opt 2)	7	8-3/4	
17,052.3	7,765.0	5 1/2" Production (Opt 1)	5-1/2	7-7/8	
17,052.3	7,765.0	4 1/2" Liner (Opt 2)	4-1/2	6-1/8	

Formations						
Measured Depth (usft)	Vertical Depth (usft)	Name	Lithology	Dip (°)	Dip Direction (°)	
7,415.5	7,414.0	Sharon Springs		0.00		
7,460.8	7,457.0	Niobrara		0.00		
7,935.0	7,754.0	Codell		0.00		
8,037.5	7,765.0	Codell Target		0.00		