



PHOTO: VIEW OF LOCATION STAKES

CAMERA ANGLE: NORTHERLY

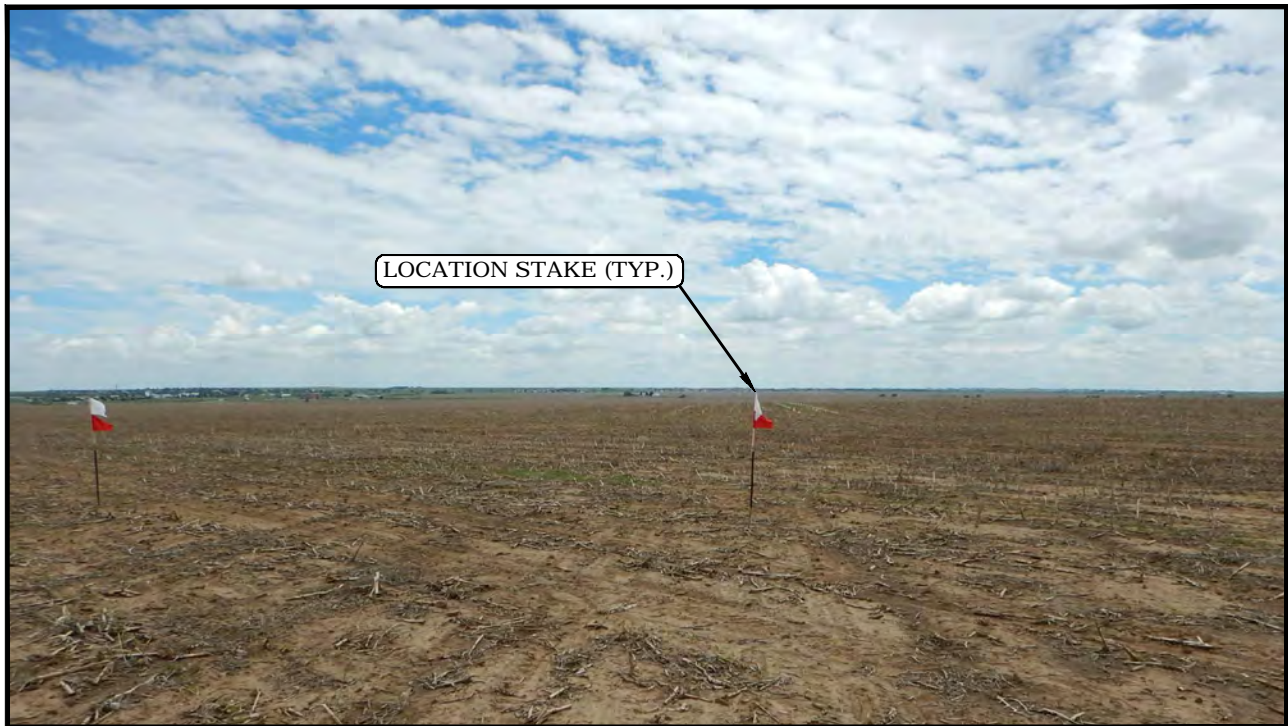


PHOTO: VIEW OF LOCATION STAKES

CAMERA ANGLE: EASTERLY

ConocoPhillips Company

PROSPER FARMS #4-65 2-1 4CH, 4AH, 3DH & 3CH
W 1/2 SW 1/4, SECTION 2, T4S, R65W, 6th P.M.
ARAPAHOE COUNTY, COLORADO



UELS, LLC
Corporate Office * 85 South 200 East
Vernal, UT 84078 * (435) 789-1017

DRAWN BY: J.L.G.	DATE DRAWN: 06-30-15
TAKEN BY: D.N.	REVISED: 00-00-00
LOCATION PHOTOS	PHOTO 1



PHOTO: VIEW OF LOCATION STAKES

CAMERA ANGLE: SOUTHERLY



PHOTO: VIEW OF LOCATION STAKES

CAMERA ANGLE: WESTERLY

ConocoPhillips Company

PROSPER FARMS #4-65 2-1 4CH, 4AH, 3DH & 3CH
W 1/2 SW 1/4, SECTION 2, T4S, R65W, 6th P.M.
ARAPAHOE COUNTY, COLORADO



UELS, LLC
Corporate Office * 85 South 200 East
Vernal, UT 84078 * (435) 789-1017

DRAWN BY: J.L.G.	DATE DRAWN: 06-30-15
TAKEN BY: D.N.	REVISED: 00-00-00
LOCATION PHOTOS	PHOTO 2