

Project: DJ - Hereford Ranch
Site: Critter Creek C18 SWSW Pad
Well: Critter Creek 538-1830
Plan: APD Plan (Plat Cert 4/20/15)
Plat Certified: 01-22-14

Project: DJ - Hereford Ranch
Site: Critter Creek C18 SWSW Pad
Well: Critter Creek 538-1830
Plan: APD Plan (Plat Cert 4/20/15)
Plat Certified: 01-22-14

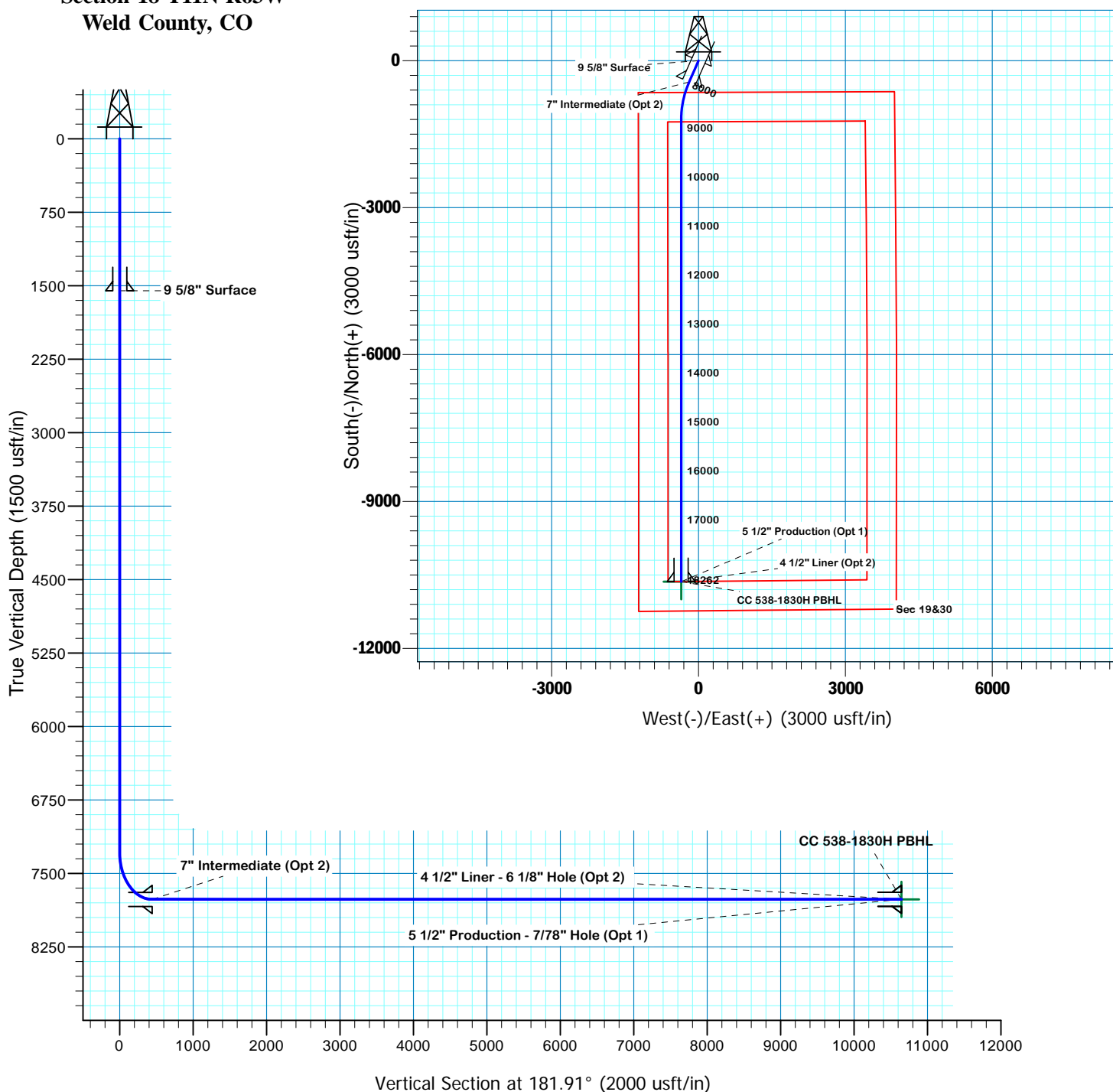
Project: DJ - Hereford Ranch
Site: Critter Creek C18 SWSW Pad
Well: Critter Creek 538-1830
Plan: APD Plan (Plat Cert 4/20/15)
Plat Certified: 01-22-14

Surface Location



NAD 1927 (NADCON CONUS) Colorado North 501
Ground Elevation: 5339.0 RKB @ 5364.0usft (KB GL+25')
Northing 578460.26 Easting 2281807.08 Latitude 40° 55' 0.559 N Longitude 104° 28' 49.420 W

Critter Creek 538-1830 Section 18-T11N-R63W Weld County, CO



SECTION DETAILS

Sec	MD	Inc	Azi	TVD	+N/-S	+E/-W	Dleg	TFace	VSect	Target
1	0.0	0.00	0.00	0.0	0.0	0.0	0.00	0.00	0.0	
2	7287.5	0.00	0.00	7287.5	0.0	0.0	0.00	0.00	0.0	
3	8037.5	90.00	203.80	7765.0	-436.9	-192.7	12.00	203.80	443.0	
4	8831.0	90.00	180.00	7765.0	-1207.7	-355.1	3.00	-90.00	1218.9	CC 538-1830H PBHL
5	18261.7	90.00	180.00	7765.0	-10638.5	-354.4	0.00	0.00	10644.4	CC 538-1830H PBHL

TARGET DETAILS

Name	TVD	+N/-S	+E/-W	Northing	Easting	Latitude	Longitude	Shape
CC 538-1830H PBHL	7765.0	-10638.5	-354.4	567818.42	2281575.07	40° 53' 15.443 N	104° 28' 54.033 W	Point

Denver Division- Colorado

**DJ - Hereford Ranch
Crittter Creek C18 SWSW Pad
Crittter Creek 538-1830**

OH

Plan: APD Plan (Plat Cert 4/20/15)

Standard Planning Report

02 June, 2015

EOG Resources, Inc.

Planning Report

Database:	EDM_DENVER	Local Co-ordinate Reference:	Well Critter Creek 538-1830
Company:	Denver Division- Colorado	TVD Reference:	RKB @ 5364.0usft (KB GL+25')
Project:	DJ - Hereford Ranch	MD Reference:	RKB @ 5364.0usft (KB GL+25')
Site:	Critter Creek C18 SWSW Pad	North Reference:	True
Well:	Critter Creek 538-1830	Survey Calculation Method:	Minimum Curvature
Wellbore:	OH		
Design:	APD Plan (Plat Cert 4/20/15)		

Project	DJ - Hereford Ranch, Weld County		
Map System:	US State Plane 1927 (Exact solution)	System Datum:	Mean Sea Level
Geo Datum:	NAD 1927 (NADCON CONUS)		
Map Zone:	Colorado North 501		

Site	Critter Creek C18 SWSW Pad		
Site Position:		Northing:	578,400.00 usft
From:	Map	Easting:	2,281,800.00 usft
Position Uncertainty:	0.0 usft	Slot Radius:	13-3/16 "
		Latitude:	40° 54' 59.964 N
		Longitude:	104° 28' 49.521 W
		Grid Convergence:	0.66 °

Well	Critter Creek 538-1830		
Well Position	+N/-S	60.2 usft	Northing:
	+E/-W	7.8 usft	Easting:
Position Uncertainty	0.0 usft	Wellhead Elevation:	0.0 usft
		Latitude:	40° 55' 0.559 N
		Longitude:	104° 28' 49.420 W
		Ground Level:	5,339.0 usft

Wellbore	OH				
Magnetics	Model Name	Sample Date	Declination	Dip Angle	Field Strength
			(°)	(°)	(nT)
	IGRF2015	6/1/2015			

Design	APD Plan (Plat Cert 4/20/15)			
Audit Notes:				
Version:	Phase:	PROTOTYPE	Tie On Depth:	0.0
Vertical Section:	Depth From (TVD)	+N/-S	+E/-W	Direction
	(usft)	(usft)	(usft)	(°)
	0.0	0.0	0.0	181.91

Plan Sections										
Measured	Inclination	Azimuth	Vertical	+N/-S	+E/-W	Dogleg	Build	Turn	TFO	Target
Depth	(°)	(°)	Depth	(usft)	(usft)	Rate	Rate	Rate	(°)	
(usft)			(usft)			(°/100usft)	(°/100usft)	(°/100usft)		
0.0	0.00	0.00	0.0	0.0	0.0	0.00	0.00	0.00	0.00	
7,287.5	0.00	0.00	7,287.5	0.0	0.0	0.00	0.00	0.00	0.00	
8,037.5	90.00	203.80	7,765.0	-436.9	-192.7	12.00	12.00	0.00	203.80	
8,831.0	90.00	180.00	7,765.0	-1,207.7	-355.1	3.00	0.00	-3.00	-90.00	CC 538-1830H PBHL
18,261.7	90.00	180.00	7,765.0	-10,638.5	-354.4	0.00	0.00	0.00	0.00	CC 538-1830H PBHL

EOG Resources, Inc.

Planning Report

Database:	EDM_DENVER	Local Co-ordinate Reference:	Well Critter Creek 538-1830
Company:	Denver Division- Colorado	TVD Reference:	RKB @ 5364.0usft (KB GL+25')
Project:	DJ - Hereford Ranch	MD Reference:	RKB @ 5364.0usft (KB GL+25')
Site:	Critter Creek C18 SWSW Pad	North Reference:	True
Well:	Critter Creek 538-1830	Survey Calculation Method:	Minimum Curvature
Wellbore:	OH		
Design:	APD Plan (Plat Cert 4/20/15)		

Planned Survey									
Measured Depth (usft)	Inclination (°)	Azimuth (°)	Vertical Depth (usft)	+N/-S (usft)	+E/-W (usft)	Vertical Section (usft)	Dogleg Rate (°/100usft)	Build Rate (°/100usft)	Turn Rate (°/100usft)
0.0	0.00	0.00	0.0	0.0	0.0	0.0	0.00	0.00	0.00
100.0	0.00	0.00	100.0	0.0	0.0	0.0	0.00	0.00	0.00
200.0	0.00	0.00	200.0	0.0	0.0	0.0	0.00	0.00	0.00
300.0	0.00	0.00	300.0	0.0	0.0	0.0	0.00	0.00	0.00
400.0	0.00	0.00	400.0	0.0	0.0	0.0	0.00	0.00	0.00
500.0	0.00	0.00	500.0	0.0	0.0	0.0	0.00	0.00	0.00
600.0	0.00	0.00	600.0	0.0	0.0	0.0	0.00	0.00	0.00
700.0	0.00	0.00	700.0	0.0	0.0	0.0	0.00	0.00	0.00
800.0	0.00	0.00	800.0	0.0	0.0	0.0	0.00	0.00	0.00
900.0	0.00	0.00	900.0	0.0	0.0	0.0	0.00	0.00	0.00
1,000.0	0.00	0.00	1,000.0	0.0	0.0	0.0	0.00	0.00	0.00
1,100.0	0.00	0.00	1,100.0	0.0	0.0	0.0	0.00	0.00	0.00
1,200.0	0.00	0.00	1,200.0	0.0	0.0	0.0	0.00	0.00	0.00
1,300.0	0.00	0.00	1,300.0	0.0	0.0	0.0	0.00	0.00	0.00
1,400.0	0.00	0.00	1,400.0	0.0	0.0	0.0	0.00	0.00	0.00
1,500.0	0.00	0.00	1,500.0	0.0	0.0	0.0	0.00	0.00	0.00
1,551.0	0.00	0.00	1,551.0	0.0	0.0	0.0	0.00	0.00	0.00
9 5/8" Surface									
1,600.0	0.00	0.00	1,600.0	0.0	0.0	0.0	0.00	0.00	0.00
1,700.0	0.00	0.00	1,700.0	0.0	0.0	0.0	0.00	0.00	0.00
1,800.0	0.00	0.00	1,800.0	0.0	0.0	0.0	0.00	0.00	0.00
1,900.0	0.00	0.00	1,900.0	0.0	0.0	0.0	0.00	0.00	0.00
2,000.0	0.00	0.00	2,000.0	0.0	0.0	0.0	0.00	0.00	0.00
2,100.0	0.00	0.00	2,100.0	0.0	0.0	0.0	0.00	0.00	0.00
2,200.0	0.00	0.00	2,200.0	0.0	0.0	0.0	0.00	0.00	0.00
2,300.0	0.00	0.00	2,300.0	0.0	0.0	0.0	0.00	0.00	0.00
2,400.0	0.00	0.00	2,400.0	0.0	0.0	0.0	0.00	0.00	0.00
2,500.0	0.00	0.00	2,500.0	0.0	0.0	0.0	0.00	0.00	0.00
2,600.0	0.00	0.00	2,600.0	0.0	0.0	0.0	0.00	0.00	0.00
2,700.0	0.00	0.00	2,700.0	0.0	0.0	0.0	0.00	0.00	0.00
2,800.0	0.00	0.00	2,800.0	0.0	0.0	0.0	0.00	0.00	0.00
2,900.0	0.00	0.00	2,900.0	0.0	0.0	0.0	0.00	0.00	0.00
3,000.0	0.00	0.00	3,000.0	0.0	0.0	0.0	0.00	0.00	0.00
3,100.0	0.00	0.00	3,100.0	0.0	0.0	0.0	0.00	0.00	0.00
3,200.0	0.00	0.00	3,200.0	0.0	0.0	0.0	0.00	0.00	0.00
3,300.0	0.00	0.00	3,300.0	0.0	0.0	0.0	0.00	0.00	0.00
3,400.0	0.00	0.00	3,400.0	0.0	0.0	0.0	0.00	0.00	0.00
3,500.0	0.00	0.00	3,500.0	0.0	0.0	0.0	0.00	0.00	0.00
3,600.0	0.00	0.00	3,600.0	0.0	0.0	0.0	0.00	0.00	0.00
3,700.0	0.00	0.00	3,700.0	0.0	0.0	0.0	0.00	0.00	0.00
3,800.0	0.00	0.00	3,800.0	0.0	0.0	0.0	0.00	0.00	0.00
3,900.0	0.00	0.00	3,900.0	0.0	0.0	0.0	0.00	0.00	0.00
4,000.0	0.00	0.00	4,000.0	0.0	0.0	0.0	0.00	0.00	0.00
4,100.0	0.00	0.00	4,100.0	0.0	0.0	0.0	0.00	0.00	0.00
4,200.0	0.00	0.00	4,200.0	0.0	0.0	0.0	0.00	0.00	0.00
4,300.0	0.00	0.00	4,300.0	0.0	0.0	0.0	0.00	0.00	0.00
4,400.0	0.00	0.00	4,400.0	0.0	0.0	0.0	0.00	0.00	0.00
4,500.0	0.00	0.00	4,500.0	0.0	0.0	0.0	0.00	0.00	0.00
4,600.0	0.00	0.00	4,600.0	0.0	0.0	0.0	0.00	0.00	0.00
4,700.0	0.00	0.00	4,700.0	0.0	0.0	0.0	0.00	0.00	0.00
4,800.0	0.00	0.00	4,800.0	0.0	0.0	0.0	0.00	0.00	0.00
4,900.0	0.00	0.00	4,900.0	0.0	0.0	0.0	0.00	0.00	0.00
5,000.0	0.00	0.00	5,000.0	0.0	0.0	0.0	0.00	0.00	0.00
5,100.0	0.00	0.00	5,100.0	0.0	0.0	0.0	0.00	0.00	0.00

EOG Resources, Inc.

Planning Report

Database:	EDM_DENVER	Local Co-ordinate Reference:	Well Critter Creek 538-1830
Company:	Denver Division- Colorado	TVD Reference:	RKB @ 5364.0usft (KB GL+25')
Project:	DJ - Hereford Ranch	MD Reference:	RKB @ 5364.0usft (KB GL+25')
Site:	Critter Creek C18 SWSW Pad	North Reference:	True
Well:	Critter Creek 538-1830	Survey Calculation Method:	Minimum Curvature
Wellbore:	OH		
Design:	APD Plan (Plat Cert 4/20/15)		

Planned Survey									
Measured Depth (usft)	Inclination (°)	Azimuth (°)	Vertical Depth (usft)	+N/-S (usft)	+E/-W (usft)	Vertical Section (usft)	Dogleg Rate (°/100usft)	Build Rate (°/100usft)	Turn Rate (°/100usft)
5,200.0	0.00	0.00	5,200.0	0.0	0.0	0.0	0.00	0.00	0.00
5,300.0	0.00	0.00	5,300.0	0.0	0.0	0.0	0.00	0.00	0.00
5,400.0	0.00	0.00	5,400.0	0.0	0.0	0.0	0.00	0.00	0.00
5,500.0	0.00	0.00	5,500.0	0.0	0.0	0.0	0.00	0.00	0.00
5,600.0	0.00	0.00	5,600.0	0.0	0.0	0.0	0.00	0.00	0.00
5,700.0	0.00	0.00	5,700.0	0.0	0.0	0.0	0.00	0.00	0.00
5,800.0	0.00	0.00	5,800.0	0.0	0.0	0.0	0.00	0.00	0.00
5,900.0	0.00	0.00	5,900.0	0.0	0.0	0.0	0.00	0.00	0.00
6,000.0	0.00	0.00	6,000.0	0.0	0.0	0.0	0.00	0.00	0.00
6,100.0	0.00	0.00	6,100.0	0.0	0.0	0.0	0.00	0.00	0.00
6,200.0	0.00	0.00	6,200.0	0.0	0.0	0.0	0.00	0.00	0.00
6,300.0	0.00	0.00	6,300.0	0.0	0.0	0.0	0.00	0.00	0.00
6,400.0	0.00	0.00	6,400.0	0.0	0.0	0.0	0.00	0.00	0.00
6,500.0	0.00	0.00	6,500.0	0.0	0.0	0.0	0.00	0.00	0.00
6,600.0	0.00	0.00	6,600.0	0.0	0.0	0.0	0.00	0.00	0.00
6,700.0	0.00	0.00	6,700.0	0.0	0.0	0.0	0.00	0.00	0.00
6,800.0	0.00	0.00	6,800.0	0.0	0.0	0.0	0.00	0.00	0.00
6,900.0	0.00	0.00	6,900.0	0.0	0.0	0.0	0.00	0.00	0.00
7,000.0	0.00	0.00	7,000.0	0.0	0.0	0.0	0.00	0.00	0.00
7,100.0	0.00	0.00	7,100.0	0.0	0.0	0.0	0.00	0.00	0.00
7,200.0	0.00	0.00	7,200.0	0.0	0.0	0.0	0.00	0.00	0.00
7,287.5	0.00	0.00	7,287.5	0.0	0.0	0.0	0.00	0.00	0.00
7,300.0	1.50	203.80	7,300.0	-0.1	-0.1	0.2	12.00	12.00	0.00
7,325.0	4.50	203.80	7,325.0	-1.3	-0.6	1.4	12.00	12.00	0.00
7,350.0	7.50	203.80	7,349.8	-3.7	-1.6	3.8	12.00	12.00	0.00
7,375.0	10.50	203.80	7,374.5	-7.3	-3.2	7.4	12.00	12.00	0.00
7,400.0	13.50	203.80	7,399.0	-12.1	-5.3	12.2	12.00	12.00	0.00
7,415.5	15.36	203.80	7,414.0	-15.6	-6.9	15.8	12.00	12.00	0.00
Sharon Springs									
7,425.0	16.50	203.80	7,423.1	-18.0	-7.9	18.2	12.00	12.00	0.00
7,450.0	19.50	203.80	7,446.9	-25.1	-11.1	25.4	12.00	12.00	0.00
7,460.8	20.79	203.80	7,457.0	-28.5	-12.5	28.9	12.00	12.00	0.00
Niobrara									
7,475.0	22.50	203.80	7,470.2	-33.3	-14.7	33.7	12.00	12.00	0.00
7,500.0	25.50	203.80	7,493.1	-42.6	-18.8	43.2	12.00	12.00	0.00
7,525.0	28.50	203.80	7,515.3	-52.9	-23.3	53.7	12.00	12.00	0.00
7,550.0	31.50	203.80	7,537.0	-64.4	-28.4	65.3	12.00	12.00	0.00
7,575.0	34.50	203.80	7,557.9	-76.8	-33.9	77.9	12.00	12.00	0.00
7,600.0	37.50	203.80	7,578.2	-90.3	-39.8	91.6	12.00	12.00	0.00
7,625.0	40.50	203.80	7,597.6	-104.7	-46.2	106.1	12.00	12.00	0.00
7,650.0	43.50	203.80	7,616.2	-120.0	-52.9	121.7	12.00	12.00	0.00
7,675.0	46.50	203.80	7,633.8	-136.1	-60.0	138.1	12.00	12.00	0.00
7,700.0	49.50	203.80	7,650.6	-153.1	-67.5	155.3	12.00	12.00	0.00
7,725.0	52.50	203.80	7,666.3	-170.9	-75.4	173.3	12.00	12.00	0.00
7,750.0	55.50	203.80	7,681.0	-189.4	-83.5	192.1	12.00	12.00	0.00
7,775.0	58.50	203.80	7,694.6	-208.6	-92.0	211.5	12.00	12.00	0.00
7,800.0	61.50	203.80	7,707.1	-228.4	-100.7	231.6	12.00	12.00	0.00
7,825.0	64.50	203.80	7,718.5	-248.8	-109.7	252.3	12.00	12.00	0.00
7,850.0	67.50	203.80	7,728.6	-269.7	-118.9	273.5	12.00	12.00	0.00
7,875.0	70.50	203.80	7,737.6	-291.0	-128.4	295.1	12.00	12.00	0.00
7,900.0	73.50	203.80	7,745.3	-312.8	-138.0	317.2	12.00	12.00	0.00
7,925.0	76.50	203.80	7,751.8	-334.9	-147.7	339.6	12.00	12.00	0.00
7,935.0	77.70	203.80	7,754.0	-343.8	-151.6	348.6	12.00	12.00	0.00

EOG Resources, Inc.

Planning Report

Database:	EDM_DENVER	Local Co-ordinate Reference:	Well Critter Creek 538-1830
Company:	Denver Division- Colorado	TVD Reference:	RKB @ 5364.0usft (KB GL+25')
Project:	DJ - Hereford Ranch	MD Reference:	RKB @ 5364.0usft (KB GL+25')
Site:	Critter Creek C18 SWSW Pad	North Reference:	True
Well:	Critter Creek 538-1830	Survey Calculation Method:	Minimum Curvature
Wellbore:	OH		
Design:	APD Plan (Plat Cert 4/20/15)		

Planned Survey									
Measured Depth (usft)	Inclination (°)	Azimuth (°)	Vertical Depth (usft)	+N/-S (usft)	+E/-W (usft)	Vertical Section (usft)	Dogleg Rate (°/100usft)	Build Rate (°/100usft)	Turn Rate (°/100usft)
Codell									
7,950.0	79.50	203.80	7,757.0	-357.2	-157.6	362.3	12.00	12.00	0.00
7,975.0	82.50	203.80	7,760.9	-379.8	-167.5	385.2	12.00	12.00	0.00
8,000.0	85.50	203.80	7,763.5	-402.6	-177.6	408.3	12.00	12.00	0.00
8,025.0	88.50	203.80	7,764.8	-425.4	-187.6	431.4	12.00	12.00	0.00
8,037.5	90.00	203.80	7,765.0	-436.9	-192.7	443.0	12.00	12.00	0.00
Codell Target - 7" Intermediate (Opt 2)									
8,100.0	90.00	201.93	7,765.0	-494.4	-217.0	501.4	3.00	0.00	-3.00
8,200.0	90.00	198.93	7,765.0	-588.2	-251.9	596.2	3.00	0.00	-3.00
8,300.0	90.00	195.93	7,765.0	-683.6	-281.8	692.6	3.00	0.00	-3.00
8,400.0	90.00	192.93	7,765.0	-780.4	-306.7	790.2	3.00	0.00	-3.00
8,500.0	90.00	189.93	7,765.0	-878.4	-326.5	888.8	3.00	0.00	-3.00
8,600.0	90.00	186.93	7,765.0	-977.3	-341.2	988.1	3.00	0.00	-3.00
8,700.0	90.00	183.93	7,765.0	-1,076.8	-350.6	1,087.9	3.00	0.00	-3.00
8,800.0	90.00	180.93	7,765.0	-1,176.7	-354.8	1,187.9	3.00	0.00	-3.00
8,831.0	90.00	180.00	7,765.0	-1,207.7	-355.1	1,218.9	3.00	0.00	-3.00
8,900.0	90.00	180.00	7,765.0	-1,276.7	-355.1	1,287.9	0.00	0.00	0.00
9,000.0	90.00	180.00	7,765.0	-1,376.7	-355.1	1,387.8	0.00	0.00	0.00
9,100.0	90.00	180.00	7,765.0	-1,476.7	-355.1	1,487.7	0.00	0.00	0.00
9,200.0	90.00	180.00	7,765.0	-1,576.7	-355.1	1,587.7	0.00	0.00	0.00
9,300.0	90.00	180.00	7,765.0	-1,676.7	-355.1	1,687.6	0.00	0.00	0.00
9,400.0	90.00	180.00	7,765.0	-1,776.7	-355.0	1,787.6	0.00	0.00	0.00
9,500.0	90.00	180.00	7,765.0	-1,876.7	-355.0	1,887.5	0.00	0.00	0.00
9,600.0	90.00	180.00	7,765.0	-1,976.7	-355.0	1,987.5	0.00	0.00	0.00
9,700.0	90.00	180.00	7,765.0	-2,076.7	-355.0	2,087.4	0.00	0.00	0.00
9,800.0	90.00	180.00	7,765.0	-2,176.7	-355.0	2,187.4	0.00	0.00	0.00
9,900.0	90.00	180.00	7,765.0	-2,276.7	-355.0	2,287.3	0.00	0.00	0.00
10,000.0	90.00	180.00	7,765.0	-2,376.7	-355.0	2,387.2	0.00	0.00	0.00
10,100.0	90.00	180.00	7,765.0	-2,476.7	-355.0	2,487.2	0.00	0.00	0.00
10,200.0	90.00	180.00	7,765.0	-2,576.7	-355.0	2,587.1	0.00	0.00	0.00
10,300.0	90.00	180.00	7,765.0	-2,676.7	-355.0	2,687.1	0.00	0.00	0.00
10,400.0	90.00	180.00	7,765.0	-2,776.7	-355.0	2,787.0	0.00	0.00	0.00
10,500.0	90.00	180.00	7,765.0	-2,876.7	-355.0	2,887.0	0.00	0.00	0.00
10,600.0	90.00	180.00	7,765.0	-2,976.7	-355.0	2,986.9	0.00	0.00	0.00
10,700.0	90.00	180.00	7,765.0	-3,076.7	-354.9	3,086.9	0.00	0.00	0.00
10,800.0	90.00	180.00	7,765.0	-3,176.7	-354.9	3,186.8	0.00	0.00	0.00
10,900.0	90.00	180.00	7,765.0	-3,276.7	-354.9	3,286.7	0.00	0.00	0.00
11,000.0	90.00	180.00	7,765.0	-3,376.7	-354.9	3,386.7	0.00	0.00	0.00
11,100.0	90.00	180.00	7,765.0	-3,476.7	-354.9	3,486.6	0.00	0.00	0.00
11,200.0	90.00	180.00	7,765.0	-3,576.7	-354.9	3,586.6	0.00	0.00	0.00
11,300.0	90.00	180.00	7,765.0	-3,676.7	-354.9	3,686.5	0.00	0.00	0.00
11,400.0	90.00	180.00	7,765.0	-3,776.7	-354.9	3,786.5	0.00	0.00	0.00
11,500.0	90.00	180.00	7,765.0	-3,876.7	-354.9	3,886.4	0.00	0.00	0.00
11,600.0	90.00	180.00	7,765.0	-3,976.7	-354.9	3,986.4	0.00	0.00	0.00
11,700.0	90.00	180.00	7,765.0	-4,076.7	-354.9	4,086.3	0.00	0.00	0.00
11,800.0	90.00	180.00	7,765.0	-4,176.7	-354.9	4,186.2	0.00	0.00	0.00
11,900.0	90.00	180.00	7,765.0	-4,276.7	-354.9	4,286.2	0.00	0.00	0.00
12,000.0	90.00	180.00	7,765.0	-4,376.7	-354.8	4,386.1	0.00	0.00	0.00
12,100.0	90.00	180.00	7,765.0	-4,476.7	-354.8	4,486.1	0.00	0.00	0.00
12,200.0	90.00	180.00	7,765.0	-4,576.7	-354.8	4,586.0	0.00	0.00	0.00
12,300.0	90.00	180.00	7,765.0	-4,676.7	-354.8	4,686.0	0.00	0.00	0.00
12,400.0	90.00	180.00	7,765.0	-4,776.7	-354.8	4,785.9	0.00	0.00	0.00
12,500.0	90.00	180.00	7,765.0	-4,876.7	-354.8	4,885.9	0.00	0.00	0.00

EOG Resources, Inc.

Planning Report

Database:	EDM_DENVER	Local Co-ordinate Reference:	Well Critter Creek 538-1830
Company:	Denver Division- Colorado	TVD Reference:	RKB @ 5364.0usft (KB GL+25')
Project:	DJ - Hereford Ranch	MD Reference:	RKB @ 5364.0usft (KB GL+25')
Site:	Critter Creek C18 SWSW Pad	North Reference:	True
Well:	Critter Creek 538-1830	Survey Calculation Method:	Minimum Curvature
Wellbore:	OH		
Design:	APD Plan (Plat Cert 4/20/15)		

Planned Survey									
Measured Depth (usft)	Inclination (°)	Azimuth (°)	Vertical Depth (usft)	+N/-S (usft)	+E/-W (usft)	Vertical Section (usft)	Dogleg Rate (°/100usft)	Build Rate (°/100usft)	Turn Rate (°/100usft)
12,600.0	90.00	180.00	7,765.0	-4,976.7	-354.8	4,985.8	0.00	0.00	0.00
12,700.0	90.00	180.00	7,765.0	-5,076.7	-354.8	5,085.7	0.00	0.00	0.00
12,800.0	90.00	180.00	7,765.0	-5,176.7	-354.8	5,185.7	0.00	0.00	0.00
12,900.0	90.00	180.00	7,765.0	-5,276.7	-354.8	5,285.6	0.00	0.00	0.00
13,000.0	90.00	180.00	7,765.0	-5,376.7	-354.8	5,385.6	0.00	0.00	0.00
13,100.0	90.00	180.00	7,765.0	-5,476.7	-354.8	5,485.5	0.00	0.00	0.00
13,200.0	90.00	180.00	7,765.0	-5,576.7	-354.8	5,585.5	0.00	0.00	0.00
13,300.0	90.00	180.00	7,765.0	-5,676.7	-354.7	5,685.4	0.00	0.00	0.00
13,400.0	90.00	180.00	7,765.0	-5,776.7	-354.7	5,785.3	0.00	0.00	0.00
13,500.0	90.00	180.00	7,765.0	-5,876.7	-354.7	5,885.3	0.00	0.00	0.00
13,600.0	90.00	180.00	7,765.0	-5,976.7	-354.7	5,985.2	0.00	0.00	0.00
13,700.0	90.00	180.00	7,765.0	-6,076.7	-354.7	6,085.2	0.00	0.00	0.00
13,800.0	90.00	180.00	7,765.0	-6,176.7	-354.7	6,185.1	0.00	0.00	0.00
13,900.0	90.00	180.00	7,765.0	-6,276.7	-354.7	6,285.1	0.00	0.00	0.00
14,000.0	90.00	180.00	7,765.0	-6,376.7	-354.7	6,385.0	0.00	0.00	0.00
14,100.0	90.00	180.00	7,765.0	-6,476.7	-354.7	6,485.0	0.00	0.00	0.00
14,200.0	90.00	180.00	7,765.0	-6,576.7	-354.7	6,584.9	0.00	0.00	0.00
14,300.0	90.00	180.00	7,765.0	-6,676.7	-354.7	6,684.8	0.00	0.00	0.00
14,400.0	90.00	180.00	7,765.0	-6,776.7	-354.7	6,784.8	0.00	0.00	0.00
14,500.0	90.00	180.00	7,765.0	-6,876.7	-354.6	6,884.7	0.00	0.00	0.00
14,600.0	90.00	180.00	7,765.0	-6,976.7	-354.6	6,984.7	0.00	0.00	0.00
14,700.0	90.00	180.00	7,765.0	-7,076.7	-354.6	7,084.6	0.00	0.00	0.00
14,800.0	90.00	180.00	7,765.0	-7,176.7	-354.6	7,184.6	0.00	0.00	0.00
14,900.0	90.00	180.00	7,765.0	-7,276.7	-354.6	7,284.5	0.00	0.00	0.00
15,000.0	90.00	180.00	7,765.0	-7,376.7	-354.6	7,384.5	0.00	0.00	0.00
15,100.0	90.00	180.00	7,765.0	-7,476.7	-354.6	7,484.4	0.00	0.00	0.00
15,200.0	90.00	180.00	7,765.0	-7,576.7	-354.6	7,584.3	0.00	0.00	0.00
15,300.0	90.00	180.00	7,765.0	-7,676.7	-354.6	7,684.3	0.00	0.00	0.00
15,400.0	90.00	180.00	7,765.0	-7,776.7	-354.6	7,784.2	0.00	0.00	0.00
15,500.0	90.00	180.00	7,765.0	-7,876.7	-354.6	7,884.2	0.00	0.00	0.00
15,600.0	90.00	180.00	7,765.0	-7,976.7	-354.6	7,984.1	0.00	0.00	0.00
15,700.0	90.00	180.00	7,765.0	-8,076.7	-354.6	8,084.1	0.00	0.00	0.00
15,800.0	90.00	180.00	7,765.0	-8,176.7	-354.5	8,184.0	0.00	0.00	0.00
15,900.0	90.00	180.00	7,765.0	-8,276.7	-354.5	8,284.0	0.00	0.00	0.00
16,000.0	90.00	180.00	7,765.0	-8,376.7	-354.5	8,383.9	0.00	0.00	0.00
16,100.0	90.00	180.00	7,765.0	-8,476.7	-354.5	8,483.8	0.00	0.00	0.00
16,200.0	90.00	180.00	7,765.0	-8,576.7	-354.5	8,583.8	0.00	0.00	0.00
16,300.0	90.00	180.00	7,765.0	-8,676.7	-354.5	8,683.7	0.00	0.00	0.00
16,400.0	90.00	180.00	7,765.0	-8,776.7	-354.5	8,783.7	0.00	0.00	0.00
16,500.0	90.00	180.00	7,765.0	-8,876.7	-354.5	8,883.6	0.00	0.00	0.00
16,600.0	90.00	180.00	7,765.0	-8,976.7	-354.5	8,983.6	0.00	0.00	0.00
16,700.0	90.00	180.00	7,765.0	-9,076.7	-354.5	9,083.5	0.00	0.00	0.00
16,800.0	90.00	180.00	7,765.0	-9,176.7	-354.5	9,183.5	0.00	0.00	0.00
16,900.0	90.00	180.00	7,765.0	-9,276.7	-354.5	9,283.4	0.00	0.00	0.00
17,000.0	90.00	180.00	7,765.0	-9,376.7	-354.5	9,383.3	0.00	0.00	0.00
17,100.0	90.00	180.00	7,765.0	-9,476.7	-354.4	9,483.3	0.00	0.00	0.00
17,200.0	90.00	180.00	7,765.0	-9,576.7	-354.4	9,583.2	0.00	0.00	0.00
17,300.0	90.00	180.00	7,765.0	-9,676.7	-354.4	9,683.2	0.00	0.00	0.00
17,400.0	90.00	180.00	7,765.0	-9,776.7	-354.4	9,783.1	0.00	0.00	0.00
17,500.0	90.00	180.00	7,765.0	-9,876.7	-354.4	9,883.1	0.00	0.00	0.00
17,600.0	90.00	180.00	7,765.0	-9,976.7	-354.4	9,983.0	0.00	0.00	0.00
17,700.0	90.00	180.00	7,765.0	-10,076.7	-354.4	10,083.0	0.00	0.00	0.00
17,800.0	90.00	180.00	7,765.0	-10,176.7	-354.4	10,182.9	0.00	0.00	0.00
17,900.0	90.00	180.00	7,765.0	-10,276.7	-354.4	10,282.8	0.00	0.00	0.00

EOG Resources, Inc.

Planning Report

Database:	EDM_DENVER	Local Co-ordinate Reference:	Well Critter Creek 538-1830
Company:	Denver Division- Colorado	TVD Reference:	RKB @ 5364.0usft (KB GL+25')
Project:	DJ - Hereford Ranch	MD Reference:	RKB @ 5364.0usft (KB GL+25')
Site:	Critter Creek C18 SWSW Pad	North Reference:	True
Well:	Critter Creek 538-1830	Survey Calculation Method:	Minimum Curvature
Wellbore:	OH		
Design:	APD Plan (Plat Cert 4/20/15)		

Planned Survey									
Measured Depth (usft)	Inclination (°)	Azimuth (°)	Vertical Depth (usft)	+N/-S (usft)	+E/-W (usft)	Vertical Section (usft)	Dogleg Rate (°/100usft)	Build Rate (°/100usft)	Turn Rate (°/100usft)
18,000.0	90.00	180.00	7,765.0	-10,376.7	-354.4	10,382.8	0.00	0.00	0.00
18,100.0	90.00	180.00	7,765.0	-10,476.7	-354.4	10,482.7	0.00	0.00	0.00
18,200.0	90.00	180.00	7,765.0	-10,576.7	-354.4	10,582.7	0.00	0.00	0.00
18,261.7	90.00	180.00	7,765.0	-10,638.4	-354.4	10,644.3	0.00	0.00	0.00
5 1/2" Production (Opt 1) - 4 1/2" Liner (Opt 2) - CC 538-1830H PBHL									

Design Targets									
Target Name	Dip Angle (°)	Dip Dir. (°)	TVD (usft)	+N/-S (usft)	+E/-W (usft)	Northing (usft)	Easting (usft)	Latitude	Longitude
- hit/miss target									
- Shape									
CC 538-1830H PBHL	0.00	0.00	7,765.0	-10,638.5	-354.4	567,818.42	2,281,575.07	40° 53' 15.443 N	104° 28' 54.033 W
- plan hits target center									
- Point									

Casing Points					
Measured Depth (usft)	Vertical Depth (usft)	Name	Casing Diameter (")	Hole Diameter (")	
1,551.0	1,551.0	9 5/8" Surface	9-5/8	13-1/2	
8,037.5	7,765.0	7" Intermediate (Opt 2)	7	8-3/4	
18,261.7	7,765.0	5 1/2" Production (Opt 1)	5-1/2	7-7/8	
18,261.7	7,765.0	4 1/2" Liner (Opt 2)	4-1/2	6-1/8	

Formations					
Measured Depth (usft)	Vertical Depth (usft)	Name	Lithology	Dip (°)	Dip Direction (°)
7,415.5	7,414.0	Sharon Springs		0.00	
7,460.8	7,457.0	Niobrara		0.00	
7,935.0	7,754.0	Codell		0.00	
8,037.5	7,765.0	Codell Target		0.00	