

Project: DJ - Hereford Ranch  
Site: Critter Creek C18 SWSW Pad  
Well: Critter Creek 542-1830H  
Plan: APD Plan (Plat Cert 4/20/15)  
Plat Certified: 01-22-14

Project: DJ - Hereford Ranch  
Site: Critter Creek C18 SWSW Pad  
Well: Critter Creek 542-1830H  
Plan: APD Plan (Plat Cert 4/20/15)  
Plat Certified: 01-22-14

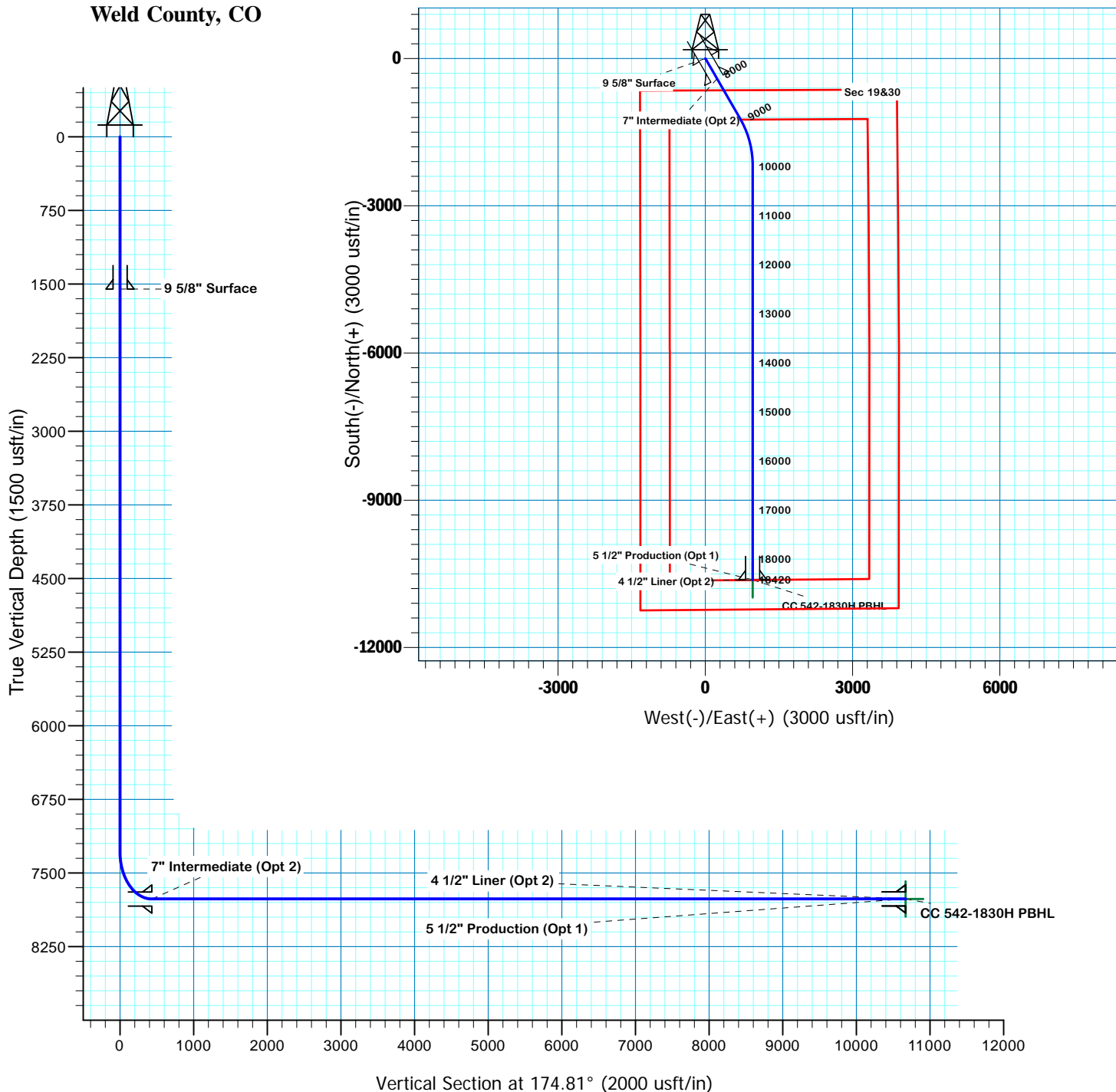
Project: DJ - Hereford Ranch  
Site: Critter Creek C18 SWSW Pad  
Well: Critter Creek 542-1830H  
Plan: APD Plan (Plat Cert 4/20/15)  
Plat Certified: 01-22-14

Surface Location



NAD 1927 (NADCON CONUS) Colorado North 501  
Ground Elevation: 5339.0 RKB @ 5364.0usft (KB GL+25')  
Northing 578461.84 Easting 2281907.10 Latitude 40° 55' 0.563 N Longitude 104° 28' 48.117 W

**Critter Creek 542-1830H**  
**Section 18-T11N-R63W**  
**Weld County, CO**



SECTION DETAILS

Sec	MD	Inc	Azi	TVD	+N/-S	+E/-W	Dleg	TFace	VSect	Target
1	0.0	0.00	0.00	0.0	0.0	0.0	0.00	0.00	0.0	
2	7287.5	0.00	0.00	7287.5	0.0	0.0	0.00	0.00	0.0	
3	8037.5	90.00	150.00	7765.0	-413.5	238.7	12.00	150.00	433.4	
4	8977.5	90.00	150.00	7765.0	-1227.6	708.7	0.00	0.00	1286.6	
5	9977.4	90.00	180.00	7765.0	-2182.4	964.6	3.00	90.00	2260.7	CC 542-1830H PBHL
6	18420.2	90.00	180.00	7765.0	-10625.2	965.2	0.00	0.00	10668.9	CC 542-1830H PBHL

TARGET DETAILS

Name	TVD	+N/-S	+E/-W	Northing	Easting	Latitude	Longitude	Shape
CC 542-1830H PBHL	7765.0	-10625.2	965.2	567848.45	2282994.46	40° 53' 15.578 N	104° 28' 35.551 W	Point

# **Denver Division- Colorado**

**DJ - Hereford Ranch  
Crittter Creek C18 SWSW Pad  
Crittter Creek 542-1830H**

**OH**

**Plan: APD Plan (Plat Cert 4/20/15)**

## **Standard Planning Report**

**02 June, 2015**

# EOG Resources, Inc.

## Planning Report

<b>Database:</b>	EDM_DENVER	<b>Local Co-ordinate Reference:</b>	Well Critter Creek 542-1830H
<b>Company:</b>	Denver Division- Colorado	<b>TVD Reference:</b>	RKB @ 5364.0usft (KB GL+25')
<b>Project:</b>	DJ - Hereford Ranch	<b>MD Reference:</b>	RKB @ 5364.0usft (KB GL+25')
<b>Site:</b>	Critter Creek C18 SWSW Pad	<b>North Reference:</b>	True
<b>Well:</b>	Critter Creek 542-1830H	<b>Survey Calculation Method:</b>	Minimum Curvature
<b>Wellbore:</b>	OH		
<b>Design:</b>	APD Plan (Plat Cert 4/20/15)		

<b>Project</b>	DJ - Hereford Ranch, Weld County		
<b>Map System:</b>	US State Plane 1927 (Exact solution)	<b>System Datum:</b>	Mean Sea Level
<b>Geo Datum:</b>	NAD 1927 (NADCON CONUS)		
<b>Map Zone:</b>	Colorado North 501		

<b>Site</b>	Critter Creek C18 SWSW Pad		
<b>Site Position:</b>		<b>Northing:</b>	578,400.00 usft
<b>From:</b>	Map	<b>Easting:</b>	2,281,800.00 usft
<b>Position Uncertainty:</b>	0.0 usft	<b>Slot Radius:</b>	13-3/16 "
		<b>Latitude:</b>	40° 54' 59.964 N
		<b>Longitude:</b>	104° 28' 49.521 W
		<b>Grid Convergence:</b>	0.66 °

<b>Well</b>	Critter Creek 542-1830H		
<b>Well Position</b>	<b>+N/-S</b>	60.6 usft	<b>Northing:</b>
	<b>+E/-W</b>	107.8 usft	<b>Easting:</b>
<b>Position Uncertainty</b>	0.0 usft	<b>Wellhead Elevation:</b>	0.0 usft
		<b>Latitude:</b>	40° 55' 0.563 N
		<b>Longitude:</b>	104° 28' 48.117 W
		<b>Ground Level:</b>	5,339.0 usft

<b>Wellbore</b>	OH				
<b>Magnetics</b>	<b>Model Name</b>	<b>Sample Date</b>	<b>Declination</b>	<b>Dip Angle</b>	<b>Field Strength</b>
			(°)	(°)	(nT)
	IGRF2015	6/1/2015			

<b>Design</b>	APD Plan (Plat Cert 4/20/15)			
<b>Audit Notes:</b>				
<b>Version:</b>	<b>Phase:</b>	PROTOTYPE	<b>Tie On Depth:</b>	0.0
<b>Vertical Section:</b>	<b>Depth From (TVD)</b>	<b>+N/-S</b>	<b>+E/-W</b>	<b>Direction</b>
	(usft)	(usft)	(usft)	(°)
	0.0	0.0	0.0	174.81

<b>Plan Sections</b>										
<b>Measured</b>	<b>Inclination</b>	<b>Azimuth</b>	<b>Vertical</b>	<b>+N/-S</b>	<b>+E/-W</b>	<b>Dogleg</b>	<b>Build</b>	<b>Turn</b>	<b>TFO</b>	<b>Target</b>
<b>Depth</b>	(°)	(°)	<b>Depth</b>	(usft)	(usft)	<b>Rate</b>	<b>Rate</b>	<b>Rate</b>	(°)	
(usft)			(usft)			(°/100usft)	(°/100usft)	(°/100usft)		
0.0	0.00	0.00	0.0	0.0	0.0	0.00	0.00	0.00	0.00	
7,287.5	0.00	0.00	7,287.5	0.0	0.0	0.00	0.00	0.00	0.00	
8,037.5	90.00	150.00	7,765.0	-413.5	238.7	12.00	12.00	0.00	150.00	
8,977.5	90.00	150.00	7,765.0	-1,227.6	708.7	0.00	0.00	0.00	0.00	
9,977.4	90.00	180.00	7,765.0	-2,182.4	964.6	3.00	0.00	3.00	90.00	CC 542-1830H PBHL
18,420.2	90.00	180.00	7,765.0	-10,625.2	965.2	0.00	0.00	0.00	0.00	CC 542-1830H PBHL

# EOG Resources, Inc.

## Planning Report

<b>Database:</b>	EDM_DENVER	<b>Local Co-ordinate Reference:</b>	Well Critter Creek 542-1830H
<b>Company:</b>	Denver Division- Colorado	<b>TVD Reference:</b>	RKB @ 5364.0usft (KB GL+25')
<b>Project:</b>	DJ - Hereford Ranch	<b>MD Reference:</b>	RKB @ 5364.0usft (KB GL+25')
<b>Site:</b>	Critter Creek C18 SWSW Pad	<b>North Reference:</b>	True
<b>Well:</b>	Critter Creek 542-1830H	<b>Survey Calculation Method:</b>	Minimum Curvature
<b>Wellbore:</b>	OH		
<b>Design:</b>	APD Plan (Plat Cert 4/20/15)		

Planned Survey									
Measured Depth (usft)	Inclination (°)	Azimuth (°)	Vertical Depth (usft)	+N/-S (usft)	+E/-W (usft)	Vertical Section (usft)	Dogleg Rate (°/100usft)	Build Rate (°/100usft)	Turn Rate (°/100usft)
0.0	0.00	0.00	0.0	0.0	0.0	0.0	0.00	0.00	0.00
100.0	0.00	0.00	100.0	0.0	0.0	0.0	0.00	0.00	0.00
200.0	0.00	0.00	200.0	0.0	0.0	0.0	0.00	0.00	0.00
300.0	0.00	0.00	300.0	0.0	0.0	0.0	0.00	0.00	0.00
400.0	0.00	0.00	400.0	0.0	0.0	0.0	0.00	0.00	0.00
500.0	0.00	0.00	500.0	0.0	0.0	0.0	0.00	0.00	0.00
600.0	0.00	0.00	600.0	0.0	0.0	0.0	0.00	0.00	0.00
700.0	0.00	0.00	700.0	0.0	0.0	0.0	0.00	0.00	0.00
800.0	0.00	0.00	800.0	0.0	0.0	0.0	0.00	0.00	0.00
900.0	0.00	0.00	900.0	0.0	0.0	0.0	0.00	0.00	0.00
1,000.0	0.00	0.00	1,000.0	0.0	0.0	0.0	0.00	0.00	0.00
1,100.0	0.00	0.00	1,100.0	0.0	0.0	0.0	0.00	0.00	0.00
1,200.0	0.00	0.00	1,200.0	0.0	0.0	0.0	0.00	0.00	0.00
1,300.0	0.00	0.00	1,300.0	0.0	0.0	0.0	0.00	0.00	0.00
1,400.0	0.00	0.00	1,400.0	0.0	0.0	0.0	0.00	0.00	0.00
1,500.0	0.00	0.00	1,500.0	0.0	0.0	0.0	0.00	0.00	0.00
1,551.0	0.00	0.00	1,551.0	0.0	0.0	0.0	0.00	0.00	0.00
9 5/8" Surface									
1,600.0	0.00	0.00	1,600.0	0.0	0.0	0.0	0.00	0.00	0.00
1,700.0	0.00	0.00	1,700.0	0.0	0.0	0.0	0.00	0.00	0.00
1,800.0	0.00	0.00	1,800.0	0.0	0.0	0.0	0.00	0.00	0.00
1,900.0	0.00	0.00	1,900.0	0.0	0.0	0.0	0.00	0.00	0.00
2,000.0	0.00	0.00	2,000.0	0.0	0.0	0.0	0.00	0.00	0.00
2,100.0	0.00	0.00	2,100.0	0.0	0.0	0.0	0.00	0.00	0.00
2,200.0	0.00	0.00	2,200.0	0.0	0.0	0.0	0.00	0.00	0.00
2,300.0	0.00	0.00	2,300.0	0.0	0.0	0.0	0.00	0.00	0.00
2,400.0	0.00	0.00	2,400.0	0.0	0.0	0.0	0.00	0.00	0.00
2,500.0	0.00	0.00	2,500.0	0.0	0.0	0.0	0.00	0.00	0.00
2,600.0	0.00	0.00	2,600.0	0.0	0.0	0.0	0.00	0.00	0.00
2,700.0	0.00	0.00	2,700.0	0.0	0.0	0.0	0.00	0.00	0.00
2,800.0	0.00	0.00	2,800.0	0.0	0.0	0.0	0.00	0.00	0.00
2,900.0	0.00	0.00	2,900.0	0.0	0.0	0.0	0.00	0.00	0.00
3,000.0	0.00	0.00	3,000.0	0.0	0.0	0.0	0.00	0.00	0.00
3,100.0	0.00	0.00	3,100.0	0.0	0.0	0.0	0.00	0.00	0.00
3,200.0	0.00	0.00	3,200.0	0.0	0.0	0.0	0.00	0.00	0.00
3,300.0	0.00	0.00	3,300.0	0.0	0.0	0.0	0.00	0.00	0.00
3,400.0	0.00	0.00	3,400.0	0.0	0.0	0.0	0.00	0.00	0.00
3,500.0	0.00	0.00	3,500.0	0.0	0.0	0.0	0.00	0.00	0.00
3,600.0	0.00	0.00	3,600.0	0.0	0.0	0.0	0.00	0.00	0.00
3,700.0	0.00	0.00	3,700.0	0.0	0.0	0.0	0.00	0.00	0.00
3,800.0	0.00	0.00	3,800.0	0.0	0.0	0.0	0.00	0.00	0.00
3,900.0	0.00	0.00	3,900.0	0.0	0.0	0.0	0.00	0.00	0.00
4,000.0	0.00	0.00	4,000.0	0.0	0.0	0.0	0.00	0.00	0.00
4,100.0	0.00	0.00	4,100.0	0.0	0.0	0.0	0.00	0.00	0.00
4,200.0	0.00	0.00	4,200.0	0.0	0.0	0.0	0.00	0.00	0.00
4,300.0	0.00	0.00	4,300.0	0.0	0.0	0.0	0.00	0.00	0.00
4,400.0	0.00	0.00	4,400.0	0.0	0.0	0.0	0.00	0.00	0.00
4,500.0	0.00	0.00	4,500.0	0.0	0.0	0.0	0.00	0.00	0.00
4,600.0	0.00	0.00	4,600.0	0.0	0.0	0.0	0.00	0.00	0.00
4,700.0	0.00	0.00	4,700.0	0.0	0.0	0.0	0.00	0.00	0.00
4,800.0	0.00	0.00	4,800.0	0.0	0.0	0.0	0.00	0.00	0.00
4,900.0	0.00	0.00	4,900.0	0.0	0.0	0.0	0.00	0.00	0.00
5,000.0	0.00	0.00	5,000.0	0.0	0.0	0.0	0.00	0.00	0.00
5,100.0	0.00	0.00	5,100.0	0.0	0.0	0.0	0.00	0.00	0.00

# EOG Resources, Inc.

## Planning Report

<b>Database:</b>	EDM_DENVER	<b>Local Co-ordinate Reference:</b>	Well Critter Creek 542-1830H
<b>Company:</b>	Denver Division- Colorado	<b>TVD Reference:</b>	RKB @ 5364.0usft (KB GL+25')
<b>Project:</b>	DJ - Hereford Ranch	<b>MD Reference:</b>	RKB @ 5364.0usft (KB GL+25')
<b>Site:</b>	Critter Creek C18 SWSW Pad	<b>North Reference:</b>	True
<b>Well:</b>	Critter Creek 542-1830H	<b>Survey Calculation Method:</b>	Minimum Curvature
<b>Wellbore:</b>	OH		
<b>Design:</b>	APD Plan (Plat Cert 4/20/15)		

Planned Survey									
Measured Depth (usft)	Inclination (°)	Azimuth (°)	Vertical Depth (usft)	+N/-S (usft)	+E/-W (usft)	Vertical Section (usft)	Dogleg Rate (°/100usft)	Build Rate (°/100usft)	Turn Rate (°/100usft)
5,200.0	0.00	0.00	5,200.0	0.0	0.0	0.0	0.00	0.00	0.00
5,300.0	0.00	0.00	5,300.0	0.0	0.0	0.0	0.00	0.00	0.00
5,400.0	0.00	0.00	5,400.0	0.0	0.0	0.0	0.00	0.00	0.00
5,500.0	0.00	0.00	5,500.0	0.0	0.0	0.0	0.00	0.00	0.00
5,600.0	0.00	0.00	5,600.0	0.0	0.0	0.0	0.00	0.00	0.00
5,700.0	0.00	0.00	5,700.0	0.0	0.0	0.0	0.00	0.00	0.00
5,800.0	0.00	0.00	5,800.0	0.0	0.0	0.0	0.00	0.00	0.00
5,900.0	0.00	0.00	5,900.0	0.0	0.0	0.0	0.00	0.00	0.00
6,000.0	0.00	0.00	6,000.0	0.0	0.0	0.0	0.00	0.00	0.00
6,100.0	0.00	0.00	6,100.0	0.0	0.0	0.0	0.00	0.00	0.00
6,200.0	0.00	0.00	6,200.0	0.0	0.0	0.0	0.00	0.00	0.00
6,300.0	0.00	0.00	6,300.0	0.0	0.0	0.0	0.00	0.00	0.00
6,400.0	0.00	0.00	6,400.0	0.0	0.0	0.0	0.00	0.00	0.00
6,500.0	0.00	0.00	6,500.0	0.0	0.0	0.0	0.00	0.00	0.00
6,600.0	0.00	0.00	6,600.0	0.0	0.0	0.0	0.00	0.00	0.00
6,700.0	0.00	0.00	6,700.0	0.0	0.0	0.0	0.00	0.00	0.00
6,800.0	0.00	0.00	6,800.0	0.0	0.0	0.0	0.00	0.00	0.00
6,900.0	0.00	0.00	6,900.0	0.0	0.0	0.0	0.00	0.00	0.00
7,000.0	0.00	0.00	7,000.0	0.0	0.0	0.0	0.00	0.00	0.00
7,100.0	0.00	0.00	7,100.0	0.0	0.0	0.0	0.00	0.00	0.00
7,200.0	0.00	0.00	7,200.0	0.0	0.0	0.0	0.00	0.00	0.00
7,287.5	0.00	0.00	7,287.5	0.0	0.0	0.0	0.00	0.00	0.00
7,300.0	1.50	150.00	7,300.0	-0.1	0.1	0.1	12.00	12.00	0.00
7,325.0	4.50	150.00	7,325.0	-1.3	0.7	1.3	12.00	12.00	0.00
7,350.0	7.50	150.00	7,349.8	-3.5	2.0	3.7	12.00	12.00	0.00
7,375.0	10.50	150.00	7,374.5	-6.9	4.0	7.3	12.00	12.00	0.00
7,400.0	13.50	150.00	7,399.0	-11.4	6.6	12.0	12.00	12.00	0.00
7,415.5	15.36	150.00	7,414.0	-14.8	8.5	15.5	12.00	12.00	0.00
Sharon Springs									
7,425.0	16.50	150.00	7,423.1	-17.0	9.8	17.8	12.00	12.00	0.00
7,450.0	19.50	150.00	7,446.9	-23.7	13.7	24.9	12.00	12.00	0.00
7,460.8	20.79	150.00	7,457.0	-26.9	15.5	28.2	12.00	12.00	0.00
Niobrara									
7,475.0	22.50	150.00	7,470.2	-31.5	18.2	33.0	12.00	12.00	0.00
7,500.0	25.50	150.00	7,493.1	-40.3	23.3	42.2	12.00	12.00	0.00
7,525.0	28.50	150.00	7,515.3	-50.1	28.9	52.5	12.00	12.00	0.00
7,550.0	31.50	150.00	7,537.0	-60.9	35.2	63.9	12.00	12.00	0.00
7,575.0	34.50	150.00	7,557.9	-72.7	42.0	76.2	12.00	12.00	0.00
7,600.0	37.50	150.00	7,578.2	-85.4	49.3	89.6	12.00	12.00	0.00
7,625.0	40.50	150.00	7,597.6	-99.1	57.2	103.8	12.00	12.00	0.00
7,650.0	43.50	150.00	7,616.2	-113.6	65.6	119.0	12.00	12.00	0.00
7,675.0	46.50	150.00	7,633.8	-128.9	74.4	135.1	12.00	12.00	0.00
7,700.0	49.50	150.00	7,650.6	-145.0	83.7	151.9	12.00	12.00	0.00
7,725.0	52.50	150.00	7,666.3	-161.8	93.4	169.6	12.00	12.00	0.00
7,750.0	55.50	150.00	7,681.0	-179.3	103.5	187.9	12.00	12.00	0.00
7,775.0	58.50	150.00	7,694.6	-197.4	114.0	206.9	12.00	12.00	0.00
7,800.0	61.50	150.00	7,707.1	-216.2	124.8	226.6	12.00	12.00	0.00
7,825.0	64.50	150.00	7,718.5	-235.5	136.0	246.8	12.00	12.00	0.00
7,850.0	67.50	150.00	7,728.6	-255.3	147.4	267.5	12.00	12.00	0.00
7,875.0	70.50	150.00	7,737.6	-275.5	159.0	288.7	12.00	12.00	0.00
7,900.0	73.50	150.00	7,745.3	-296.1	170.9	310.3	12.00	12.00	0.00
7,925.0	76.50	150.00	7,751.8	-317.0	183.0	332.2	12.00	12.00	0.00
7,935.0	77.70	150.00	7,754.0	-325.4	187.9	341.1	12.00	12.00	0.00

# EOG Resources, Inc.

## Planning Report

<b>Database:</b>	EDM_DENVER	<b>Local Co-ordinate Reference:</b>	Well Critter Creek 542-1830H
<b>Company:</b>	Denver Division- Colorado	<b>TVD Reference:</b>	RKB @ 5364.0usft (KB GL+25')
<b>Project:</b>	DJ - Hereford Ranch	<b>MD Reference:</b>	RKB @ 5364.0usft (KB GL+25')
<b>Site:</b>	Critter Creek C18 SWSW Pad	<b>North Reference:</b>	True
<b>Well:</b>	Critter Creek 542-1830H	<b>Survey Calculation Method:</b>	Minimum Curvature
<b>Wellbore:</b>	OH		
<b>Design:</b>	APD Plan (Plat Cert 4/20/15)		

Planned Survey									
Measured Depth (usft)	Inclination (°)	Azimuth (°)	Vertical Depth (usft)	+N/-S (usft)	+E/-W (usft)	Vertical Section (usft)	Dogleg Rate (°/100usft)	Build Rate (°/100usft)	Turn Rate (°/100usft)
<b>Codell</b>									
7,950.0	79.50	150.00	7,757.0	-338.1	195.2	354.4	12.00	12.00	0.00
7,975.0	82.50	150.00	7,760.9	-359.5	207.6	376.8	12.00	12.00	0.00
8,000.0	85.50	150.00	7,763.5	-381.1	220.0	399.4	12.00	12.00	0.00
8,025.0	88.50	150.00	7,764.8	-402.7	232.5	422.1	12.00	12.00	0.00
8,037.5	90.00	150.00	7,765.0	-413.5	238.7	433.4	12.00	12.00	0.00
<b>Codell Target - 7" Intermediate (Opt 2)</b>									
8,100.0	90.00	150.00	7,765.0	-467.6	270.0	490.1	0.00	0.00	0.00
8,200.0	90.00	150.00	7,765.0	-554.2	320.0	580.9	0.00	0.00	0.00
8,300.0	90.00	150.00	7,765.0	-640.8	370.0	671.7	0.00	0.00	0.00
8,400.0	90.00	150.00	7,765.0	-727.4	420.0	762.4	0.00	0.00	0.00
8,500.0	90.00	150.00	7,765.0	-814.0	470.0	853.2	0.00	0.00	0.00
8,600.0	90.00	150.00	7,765.0	-900.6	520.0	944.0	0.00	0.00	0.00
8,700.0	90.00	150.00	7,765.0	-987.2	570.0	1,034.8	0.00	0.00	0.00
8,800.0	90.00	150.00	7,765.0	-1,073.8	620.0	1,125.5	0.00	0.00	0.00
8,900.0	90.00	150.00	7,765.0	-1,160.4	670.0	1,216.3	0.00	0.00	0.00
8,977.5	90.00	150.00	7,765.0	-1,227.6	708.7	1,286.6	0.00	0.00	0.00
9,000.0	90.00	150.68	7,765.0	-1,247.1	719.9	1,307.1	3.00	0.00	3.00
9,100.0	90.00	153.68	7,765.0	-1,335.5	766.5	1,399.4	3.00	0.00	3.00
9,200.0	90.00	156.68	7,765.0	-1,426.3	808.5	1,493.6	3.00	0.00	3.00
9,300.0	90.00	159.68	7,765.0	-1,519.1	845.7	1,589.4	3.00	0.00	3.00
9,400.0	90.00	162.68	7,765.0	-1,613.8	878.0	1,686.6	3.00	0.00	3.00
9,500.0	90.00	165.68	7,765.0	-1,709.9	905.2	1,784.8	3.00	0.00	3.00
9,600.0	90.00	168.68	7,765.0	-1,807.4	927.4	1,883.9	3.00	0.00	3.00
9,700.0	90.00	171.68	7,765.0	-1,906.0	944.5	1,983.6	3.00	0.00	3.00
9,800.0	90.00	174.68	7,765.0	-2,005.2	956.4	2,083.5	3.00	0.00	3.00
9,900.0	90.00	177.68	7,765.0	-2,105.0	963.0	2,183.5	3.00	0.00	3.00
9,977.4	90.00	180.00	7,765.0	-2,182.4	964.6	2,260.7	3.00	0.00	3.00
10,000.0	90.00	180.00	7,765.0	-2,205.0	964.6	2,283.2	0.00	0.00	0.00
10,100.0	90.00	180.00	7,765.0	-2,305.0	964.6	2,382.8	0.00	0.00	0.00
10,200.0	90.00	180.00	7,765.0	-2,405.0	964.6	2,482.4	0.00	0.00	0.00
10,300.0	90.00	180.00	7,765.0	-2,505.0	964.6	2,582.0	0.00	0.00	0.00
10,400.0	90.00	180.00	7,765.0	-2,605.0	964.6	2,681.6	0.00	0.00	0.00
10,500.0	90.00	180.00	7,765.0	-2,705.0	964.6	2,781.2	0.00	0.00	0.00
10,600.0	90.00	180.00	7,765.0	-2,805.0	964.6	2,880.8	0.00	0.00	0.00
10,700.0	90.00	180.00	7,765.0	-2,905.0	964.7	2,980.3	0.00	0.00	0.00
10,800.0	90.00	180.00	7,765.0	-3,005.0	964.7	3,079.9	0.00	0.00	0.00
10,900.0	90.00	180.00	7,765.0	-3,105.0	964.7	3,179.5	0.00	0.00	0.00
11,000.0	90.00	180.00	7,765.0	-3,205.0	964.7	3,279.1	0.00	0.00	0.00
11,100.0	90.00	180.00	7,765.0	-3,305.0	964.7	3,378.7	0.00	0.00	0.00
11,200.0	90.00	180.00	7,765.0	-3,405.0	964.7	3,478.3	0.00	0.00	0.00
11,300.0	90.00	180.00	7,765.0	-3,505.0	964.7	3,577.9	0.00	0.00	0.00
11,400.0	90.00	180.00	7,765.0	-3,605.0	964.7	3,677.5	0.00	0.00	0.00
11,500.0	90.00	180.00	7,765.0	-3,705.0	964.7	3,777.1	0.00	0.00	0.00
11,600.0	90.00	180.00	7,765.0	-3,805.0	964.7	3,876.7	0.00	0.00	0.00
11,700.0	90.00	180.00	7,765.0	-3,905.0	964.7	3,976.3	0.00	0.00	0.00
11,800.0	90.00	180.00	7,765.0	-4,005.0	964.7	4,075.8	0.00	0.00	0.00
11,900.0	90.00	180.00	7,765.0	-4,105.0	964.7	4,175.4	0.00	0.00	0.00
12,000.0	90.00	180.00	7,765.0	-4,205.0	964.8	4,275.0	0.00	0.00	0.00
12,100.0	90.00	180.00	7,765.0	-4,305.0	964.8	4,374.6	0.00	0.00	0.00
12,200.0	90.00	180.00	7,765.0	-4,405.0	964.8	4,474.2	0.00	0.00	0.00
12,300.0	90.00	180.00	7,765.0	-4,505.0	964.8	4,573.8	0.00	0.00	0.00
12,400.0	90.00	180.00	7,765.0	-4,605.0	964.8	4,673.4	0.00	0.00	0.00

# EOG Resources, Inc.

## Planning Report

<b>Database:</b>	EDM_DENVER	<b>Local Co-ordinate Reference:</b>	Well Critter Creek 542-1830H
<b>Company:</b>	Denver Division- Colorado	<b>TVD Reference:</b>	RKB @ 5364.0usft (KB GL+25')
<b>Project:</b>	DJ - Hereford Ranch	<b>MD Reference:</b>	RKB @ 5364.0usft (KB GL+25')
<b>Site:</b>	Critter Creek C18 SWSW Pad	<b>North Reference:</b>	True
<b>Well:</b>	Critter Creek 542-1830H	<b>Survey Calculation Method:</b>	Minimum Curvature
<b>Wellbore:</b>	OH		
<b>Design:</b>	APD Plan (Plat Cert 4/20/15)		

Planned Survey									
Measured Depth (usft)	Inclination (°)	Azimuth (°)	Vertical Depth (usft)	+N/-S (usft)	+E/-W (usft)	Vertical Section (usft)	Dogleg Rate (°/100usft)	Build Rate (°/100usft)	Turn Rate (°/100usft)
12,500.0	90.00	180.00	7,765.0	-4,705.0	964.8	4,773.0	0.00	0.00	0.00
12,600.0	90.00	180.00	7,765.0	-4,805.0	964.8	4,872.6	0.00	0.00	0.00
12,700.0	90.00	180.00	7,765.0	-4,905.0	964.8	4,972.2	0.00	0.00	0.00
12,800.0	90.00	180.00	7,765.0	-5,005.0	964.8	5,071.8	0.00	0.00	0.00
12,900.0	90.00	180.00	7,765.0	-5,105.0	964.8	5,171.3	0.00	0.00	0.00
13,000.0	90.00	180.00	7,765.0	-5,205.0	964.8	5,270.9	0.00	0.00	0.00
13,100.0	90.00	180.00	7,765.0	-5,305.0	964.8	5,370.5	0.00	0.00	0.00
13,200.0	90.00	180.00	7,765.0	-5,405.0	964.8	5,470.1	0.00	0.00	0.00
13,300.0	90.00	180.00	7,765.0	-5,505.0	964.8	5,569.7	0.00	0.00	0.00
13,400.0	90.00	180.00	7,765.0	-5,605.0	964.9	5,669.3	0.00	0.00	0.00
13,500.0	90.00	180.00	7,765.0	-5,705.0	964.9	5,768.9	0.00	0.00	0.00
13,600.0	90.00	180.00	7,765.0	-5,805.0	964.9	5,868.5	0.00	0.00	0.00
13,700.0	90.00	180.00	7,765.0	-5,905.0	964.9	5,968.1	0.00	0.00	0.00
13,800.0	90.00	180.00	7,765.0	-6,005.0	964.9	6,067.7	0.00	0.00	0.00
13,900.0	90.00	180.00	7,765.0	-6,105.0	964.9	6,167.2	0.00	0.00	0.00
14,000.0	90.00	180.00	7,765.0	-6,205.0	964.9	6,266.8	0.00	0.00	0.00
14,100.0	90.00	180.00	7,765.0	-6,305.0	964.9	6,366.4	0.00	0.00	0.00
14,200.0	90.00	180.00	7,765.0	-6,405.0	964.9	6,466.0	0.00	0.00	0.00
14,300.0	90.00	180.00	7,765.0	-6,505.0	964.9	6,565.6	0.00	0.00	0.00
14,400.0	90.00	180.00	7,765.0	-6,605.0	964.9	6,665.2	0.00	0.00	0.00
14,500.0	90.00	180.00	7,765.0	-6,705.0	964.9	6,764.8	0.00	0.00	0.00
14,600.0	90.00	180.00	7,765.0	-6,805.0	964.9	6,864.4	0.00	0.00	0.00
14,700.0	90.00	180.00	7,765.0	-6,905.0	964.9	6,964.0	0.00	0.00	0.00
14,800.0	90.00	180.00	7,765.0	-7,005.0	965.0	7,063.6	0.00	0.00	0.00
14,900.0	90.00	180.00	7,765.0	-7,105.0	965.0	7,163.2	0.00	0.00	0.00
15,000.0	90.00	180.00	7,765.0	-7,205.0	965.0	7,262.7	0.00	0.00	0.00
15,100.0	90.00	180.00	7,765.0	-7,305.0	965.0	7,362.3	0.00	0.00	0.00
15,200.0	90.00	180.00	7,765.0	-7,405.0	965.0	7,461.9	0.00	0.00	0.00
15,300.0	90.00	180.00	7,765.0	-7,505.0	965.0	7,561.5	0.00	0.00	0.00
15,400.0	90.00	180.00	7,765.0	-7,605.0	965.0	7,661.1	0.00	0.00	0.00
15,500.0	90.00	180.00	7,765.0	-7,705.0	965.0	7,760.7	0.00	0.00	0.00
15,600.0	90.00	180.00	7,765.0	-7,805.0	965.0	7,860.3	0.00	0.00	0.00
15,700.0	90.00	180.00	7,765.0	-7,905.0	965.0	7,959.9	0.00	0.00	0.00
15,800.0	90.00	180.00	7,765.0	-8,005.0	965.0	8,059.5	0.00	0.00	0.00
15,900.0	90.00	180.00	7,765.0	-8,105.0	965.0	8,159.1	0.00	0.00	0.00
16,000.0	90.00	180.00	7,765.0	-8,205.0	965.0	8,258.6	0.00	0.00	0.00
16,100.0	90.00	180.00	7,765.0	-8,305.0	965.0	8,358.2	0.00	0.00	0.00
16,200.0	90.00	180.00	7,765.0	-8,405.0	965.1	8,457.8	0.00	0.00	0.00
16,300.0	90.00	180.00	7,765.0	-8,505.0	965.1	8,557.4	0.00	0.00	0.00
16,400.0	90.00	180.00	7,765.0	-8,605.0	965.1	8,657.0	0.00	0.00	0.00
16,500.0	90.00	180.00	7,765.0	-8,705.0	965.1	8,756.6	0.00	0.00	0.00
16,600.0	90.00	180.00	7,765.0	-8,805.0	965.1	8,856.2	0.00	0.00	0.00
16,700.0	90.00	180.00	7,765.0	-8,905.0	965.1	8,955.8	0.00	0.00	0.00
16,800.0	90.00	180.00	7,765.0	-9,005.0	965.1	9,055.4	0.00	0.00	0.00
16,900.0	90.00	180.00	7,765.0	-9,105.0	965.1	9,155.0	0.00	0.00	0.00
17,000.0	90.00	180.00	7,765.0	-9,205.0	965.1	9,254.6	0.00	0.00	0.00
17,100.0	90.00	180.00	7,765.0	-9,305.0	965.1	9,354.1	0.00	0.00	0.00
17,200.0	90.00	180.00	7,765.0	-9,405.0	965.1	9,453.7	0.00	0.00	0.00
17,300.0	90.00	180.00	7,765.0	-9,505.0	965.1	9,553.3	0.00	0.00	0.00
17,400.0	90.00	180.00	7,765.0	-9,605.0	965.1	9,652.9	0.00	0.00	0.00
17,500.0	90.00	180.00	7,765.0	-9,705.0	965.1	9,752.5	0.00	0.00	0.00
17,600.0	90.00	180.00	7,765.0	-9,805.0	965.2	9,852.1	0.00	0.00	0.00
17,700.0	90.00	180.00	7,765.0	-9,905.0	965.2	9,951.7	0.00	0.00	0.00
17,800.0	90.00	180.00	7,765.0	-10,005.0	965.2	10,051.3	0.00	0.00	0.00

# EOG Resources, Inc.

## Planning Report

<b>Database:</b>	EDM_DENVER	<b>Local Co-ordinate Reference:</b>	Well Critter Creek 542-1830H
<b>Company:</b>	Denver Division- Colorado	<b>TVD Reference:</b>	RKB @ 5364.0usft (KB GL+25')
<b>Project:</b>	DJ - Hereford Ranch	<b>MD Reference:</b>	RKB @ 5364.0usft (KB GL+25')
<b>Site:</b>	Critter Creek C18 SWSW Pad	<b>North Reference:</b>	True
<b>Well:</b>	Critter Creek 542-1830H	<b>Survey Calculation Method:</b>	Minimum Curvature
<b>Wellbore:</b>	OH		
<b>Design:</b>	APD Plan (Plat Cert 4/20/15)		

Planned Survey										
Measured Depth (usft)	Inclination (°)	Azimuth (°)	Vertical Depth (usft)	+N/-S (usft)	+E/-W (usft)	Vertical Section (usft)	Dogleg Rate (°/100usft)	Build Rate (°/100usft)	Turn Rate (°/100usft)	
17,900.0	90.00	180.00	7,765.0	-10,105.0	965.2	10,150.9	0.00	0.00	0.00	
18,000.0	90.00	180.00	7,765.0	-10,205.0	965.2	10,250.5	0.00	0.00	0.00	
18,100.0	90.00	180.00	7,765.0	-10,305.0	965.2	10,350.1	0.00	0.00	0.00	
18,200.0	90.00	180.00	7,765.0	-10,405.0	965.2	10,449.6	0.00	0.00	0.00	
18,300.0	90.00	180.00	7,765.0	-10,505.0	965.2	10,549.2	0.00	0.00	0.00	
18,400.0	90.00	180.00	7,765.0	-10,605.0	965.2	10,648.8	0.00	0.00	0.00	
18,420.2	90.00	180.00	7,765.0	-10,625.2	965.2	10,668.9	0.00	0.00	0.00	
5 1/2" Production (Opt 1) - 4 1/2" Liner (Opt 2) - CC 542-1830H PBHL										

Design Targets										
Target Name	Dip Angle (°)	Dip Dir. (°)	TVD (usft)	+N/-S (usft)	+E/-W (usft)	Northing (usft)	Easting (usft)	Latitude	Longitude	
- hit/miss target										
- Shape										
CC 542-1830H PBHL	0.00	0.00	7,765.0	-10,625.2	965.2	567,848.45	2,282,994.46	40° 53' 15.578 N	104° 28' 35.551 W	
- plan hits target center										
- Point										

Casing Points						
Measured Depth (usft)	Vertical Depth (usft)	Name	Casing Diameter (")	Hole Diameter (")		
1,551.0	1,551.0	9 5/8" Surface	9-5/8	13-1/2		
8,037.5	7,765.0	7" Intermediate (Opt 2)	7	8-3/4		
18,420.2	7,765.0	5 1/2" Production (Opt 1)	5-1/2	7-7/8		
18,420.2	7,765.0	4 1/2" Liner (Opt 2)	4-1/2	6-1/8		

Formations						
Measured Depth (usft)	Vertical Depth (usft)	Name	Lithology	Dip (°)	Dip Direction (°)	
7,415.5	7,414.0	Sharon Springs		0.00		
7,460.8	7,457.0	Niobrara		0.00		
7,935.0	7,754.0	Codell		0.00		
8,037.5	7,765.0	Codell Target		0.00		