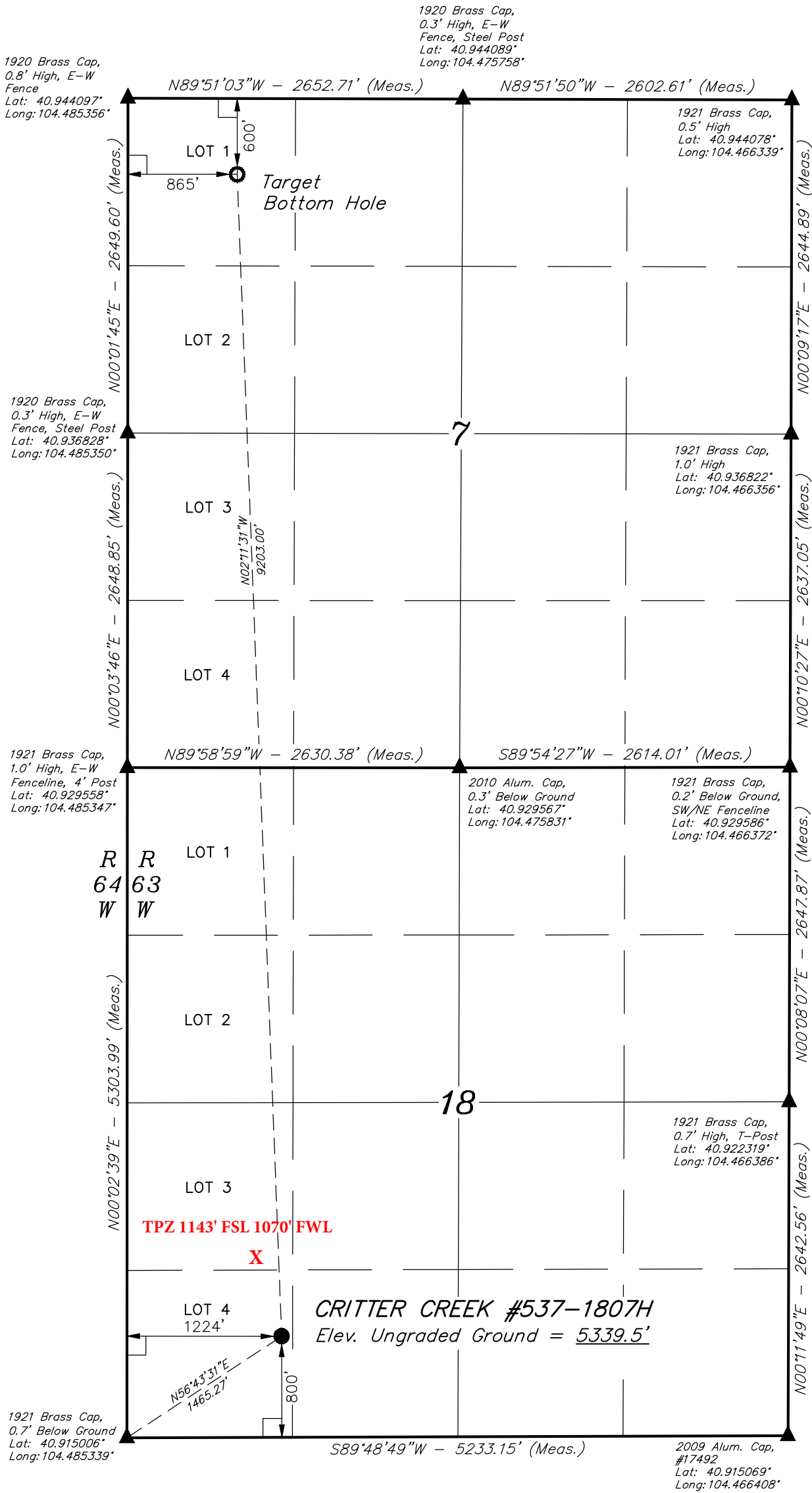


LEGEND:

- └─┘ = 90° SYMBOL
● = PROPOSED WELLHEAD.
○ = TARGET BOTTOM HOLE.
▲ = SECTION CORNERS LOCATED.

T11N, R63W, 6th P.M.



| NAD 83 (TARGET BOTTOM HOLE) | NAD 83 (SURFACE LOCATION) |
|--|--|
| LATITUDE = 40°56'32.81" (40.942447) | LATITUDE = 40°55'01.98" (40.917217) |
| LONGITUDE = 104°28'56.01" (104.482225) | LONGITUDE = 104°28'51.28" (104.480911) |
| NAD 27 (TARGET BOTTOM HOLE) | NAD 27 (SURFACE LOCATION) |
| LATITUDE = 40°56'32.88" (40.942467) | LATITUDE = 40°55'02.04" (40.917233) |
| LONGITUDE = 104°28'54.16" (104.481711) | LONGITUDE = 104°28'49.43" (104.480397) |
| STATE PLANE NAD 83 (CO. NORTH) | STATE PLANE NAD 83 (CO. NORTH) |
| N: 1587801.00 E: 3281186.46 | N: 1578612.06 E: 3281655.30 |
| STATE PLANE NAD 27 (CO. NORTH) | STATE PLANE NAD 27 (CO. NORTH) |
| N: 587798.87 E: 2281336.00 | N: 578610.12 E: 2281804.79 |

CERTIFICATE
THIS IS TO CERTIFY THAT THE ABOVE PLAT WAS PREPARED FROM FIELD
NOTES OF ACTUAL SURVEYS MADE BY ME OR UNDER MY SUPERVISION
AND THAT THE SAME ARE TRUE AND CORRECT TO THE BEST OF MY
KNOWLEDGE AND BELIEF.

REGISTERED LAND SURVEYOR
REGISTRATION NO. 28285
STATE OF COLORADO

BASIS OF BEARINGS
BASIS OF BEARINGS IS A G.P.S. OBSERVATION

BASIS OF ELEVATION
SPOT ELEVATION AT THE NORTHEAST CORNER OF SECTION 1, T11N, R63W, 6th P.M.,
TAKEN FROM THE HEREFORD, QUADRANGLE, COLORADO, WELD COUNTY, 7.5 MINUTE
QUAD. (TOPOGRAPHIC MAP) PUBLISHED BY THE UNITED STATES DEPARTMENT OF THE
INTERIOR, GEOLOGICAL SURVEY. SAID ELEVATION IS MARKED AS BEING 5352 FEET.

EOG RESOURCES, INC.

CRITTER CREEK #537-1807H
SECTION 18, T11N, R63W, 6th P.M.
SW 1/4 SW 1/4
WELD COUNTY, COLORADO

| | |
|--------------------------------------|----------------------|
| SURVEYED BY: JARED CHRISTOPHER, D.W. | DATE: 03-27-15 |
| DRAWN BY: M.O.E. | DATE DRAWN: 04-02-15 |
| SCALE: 1" = 1000' | REVISED: 00-00-00 |

WELL LOCATION PLAT



UELS, LLC
Corporate Office * 85 South 200 East
Vernal, UT 84078 * (435) 789-1017

