

Project: DJ - Hereford Ranch
Site: Critter Creek C18 SWSW Pad
Well: Critter Creek 537-1807H
Plan: APD Plan (Plat Cert 4/20/15)
Plat Certified: 01-22-14

Project: DJ - Hereford Ranch
Site: Critter Creek C18 SWSW Pad
Well: Critter Creek 537-1807H
Plan: APD Plan (Plat Cert 4/20/15)
Plat Certified: 01-22-14

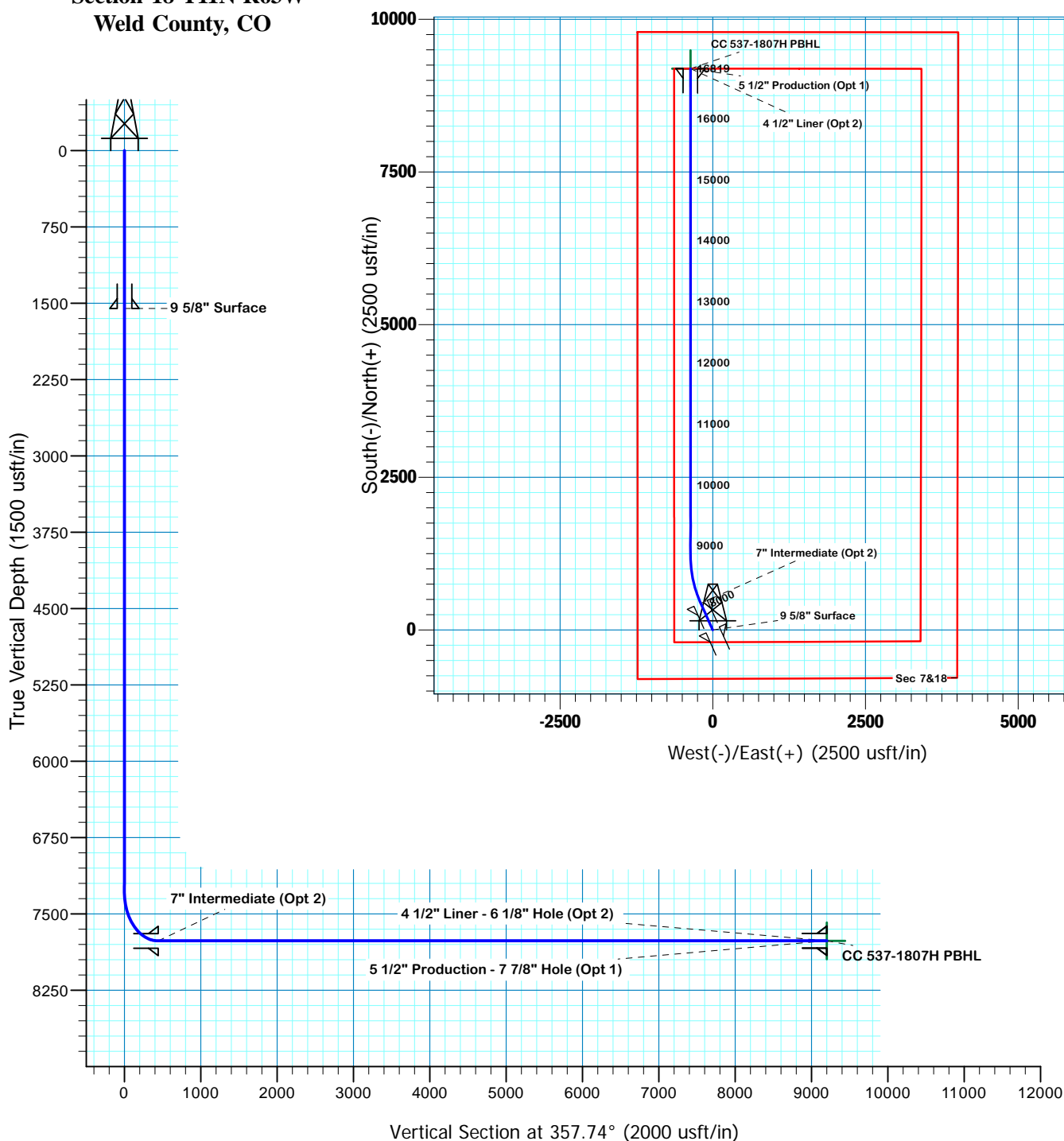
Project: DJ - Hereford Ranch
Site: Critter Creek C18 SWSW Pad
Well: Critter Creek 537-1807H
Plan: APD Plan (Plat Cert 4/20/15)
Plat Certified: 01-22-14

Surface Location



NAD 1927 (NADCON CONUS) Colorado North 501
Ground Elevation: 5339.0 RKB @ 5364.0usft (KB GL+25')
Northing 578610.12 Easting 2281804.79 Latitude 40° 55' 2.039 N Longitude 104° 28' 49.427 W

Critter Creek 537-1807H Section 18-T11N-R63W Weld County, CO



SECTION DETAILS

Sec	MD	Inc	Azi	TVD	+N/-S	+E/-W	Dleg	TFace	VSect	Target
1	0.0	0.00	0.00	0.0	0.0	0.0	0.00	0.00	0.0	
2	7287.5	0.00	0.00	7287.5	0.0	0.0	0.00	0.00	0.0	
3	8037.5	90.00	335.80	7765.0	435.5	-195.7	12.00	335.80	442.9	
4	8844.3	90.00	0.00	7765.0	1218.5	-363.6	3.00	90.00	1231.9	CC 537-1807H PBHL
5	16819.3	90.00	0.00	7765.0	9193.5	-363.1	0.00	0.00	9200.7	CC 537-1807H PBHL

TARGET DETAILS

Name	TVD	+N/-S	+E/-W	Northing	Easting	Latitude	Longitude	Shape
CC 537-1807H PBHL	7765.0	9193.5	-363.1	587798.87	2281336.00	40° 56' 32.877 N	104° 28' 54.158 W	Point

Denver Division- Colorado

**DJ - Hereford Ranch
Crittter Creek C18 SWSW Pad
Crittter Creek 537-1807H**

OH

Plan: APD Plan (Plat Cert 4/20/15)

Standard Planning Report

02 June, 2015

EOG Resources, Inc.

Planning Report

Database:	EDM_DENVER	Local Co-ordinate Reference:	Well Critter Creek 537-1807H
Company:	Denver Division- Colorado	TVD Reference:	RKB @ 5364.0usft (KB GL+25')
Project:	DJ - Hereford Ranch	MD Reference:	RKB @ 5364.0usft (KB GL+25')
Site:	Critter Creek C18 SWSW Pad	North Reference:	True
Well:	Critter Creek 537-1807H	Survey Calculation Method:	Minimum Curvature
Wellbore:	OH		
Design:	APD Plan (Plat Cert 4/20/15)		

Project	DJ - Hereford Ranch, Weld County		
Map System:	US State Plane 1927 (Exact solution)	System Datum:	Mean Sea Level
Geo Datum:	NAD 1927 (NADCON CONUS)		
Map Zone:	Colorado North 501		

Site	Critter Creek C18 SWSW Pad		
Site Position:		Northing:	578,400.00 usft
From:	Map	Easting:	2,281,800.00 usft
Position Uncertainty:	0.0 usft	Slot Radius:	13-3/16 "
		Latitude:	40° 54' 59.964 N
		Longitude:	104° 28' 49.521 W
		Grid Convergence:	0.66 °

Well	Critter Creek 537-1807H		
Well Position	+N/-S	210.1 usft	Northing:
	+E/-W	7.2 usft	Easting:
Position Uncertainty	0.0 usft		Wellhead Elevation:
			Latitude:
			Longitude:
			Ground Level:

Wellbore	OH		
Magnetics	Model Name	Sample Date	Declination
			(°)
	IGRF2015	6/1/2015	
			Dip Angle
			(°)
			Field Strength
			(nT)

Design	APD Plan (Plat Cert 4/20/15)		
Audit Notes:			
Version:	Phase:	PROTOTYPE	Tie On Depth:
			0.0
Vertical Section:	Depth From (TVD)	+N/-S	+E/-W
	(usft)	(usft)	(usft)
	0.0	0.0	0.0
			Direction
			(°)
			357.74

Plan Sections										
Measured	Inclination	Azimuth	Vertical	+N/-S	+E/-W	Dogleg	Build	Turn	TFO	Target
Depth	(°)	(°)	Depth	(usft)	(usft)	Rate	Rate	Rate	(°)	
(usft)			(usft)			(°/100usft)	(°/100usft)	(°/100usft)		
0.0	0.00	0.00	0.0	0.0	0.0	0.00	0.00	0.00	0.00	
7,287.5	0.00	0.00	7,287.5	0.0	0.0	0.00	0.00	0.00	0.00	
8,037.5	90.00	335.80	7,765.0	435.5	-195.7	12.00	12.00	0.00	335.80	
8,844.3	90.00	0.00	7,765.0	1,218.5	-363.6	3.00	0.00	3.00	90.00	CC 537-1807H PBHL
16,819.3	90.00	0.00	7,765.0	9,193.5	-363.1	0.00	0.00	0.00	0.00	CC 537-1807H PBHL

EOG Resources, Inc.

Planning Report

Database:	EDM_DENVER	Local Co-ordinate Reference:	Well Critter Creek 537-1807H
Company:	Denver Division- Colorado	TVD Reference:	RKB @ 5364.0usft (KB GL+25')
Project:	DJ - Hereford Ranch	MD Reference:	RKB @ 5364.0usft (KB GL+25')
Site:	Critter Creek C18 SWSW Pad	North Reference:	True
Well:	Critter Creek 537-1807H	Survey Calculation Method:	Minimum Curvature
Wellbore:	OH		
Design:	APD Plan (Plat Cert 4/20/15)		

Planned Survey									
Measured Depth (usft)	Inclination (°)	Azimuth (°)	Vertical Depth (usft)	+N/-S (usft)	+E/-W (usft)	Vertical Section (usft)	Dogleg Rate (°/100usft)	Build Rate (°/100usft)	Turn Rate (°/100usft)
0.0	0.00	0.00	0.0	0.0	0.0	0.0	0.00	0.00	0.00
100.0	0.00	0.00	100.0	0.0	0.0	0.0	0.00	0.00	0.00
200.0	0.00	0.00	200.0	0.0	0.0	0.0	0.00	0.00	0.00
300.0	0.00	0.00	300.0	0.0	0.0	0.0	0.00	0.00	0.00
400.0	0.00	0.00	400.0	0.0	0.0	0.0	0.00	0.00	0.00
500.0	0.00	0.00	500.0	0.0	0.0	0.0	0.00	0.00	0.00
600.0	0.00	0.00	600.0	0.0	0.0	0.0	0.00	0.00	0.00
700.0	0.00	0.00	700.0	0.0	0.0	0.0	0.00	0.00	0.00
800.0	0.00	0.00	800.0	0.0	0.0	0.0	0.00	0.00	0.00
900.0	0.00	0.00	900.0	0.0	0.0	0.0	0.00	0.00	0.00
1,000.0	0.00	0.00	1,000.0	0.0	0.0	0.0	0.00	0.00	0.00
1,100.0	0.00	0.00	1,100.0	0.0	0.0	0.0	0.00	0.00	0.00
1,200.0	0.00	0.00	1,200.0	0.0	0.0	0.0	0.00	0.00	0.00
1,300.0	0.00	0.00	1,300.0	0.0	0.0	0.0	0.00	0.00	0.00
1,400.0	0.00	0.00	1,400.0	0.0	0.0	0.0	0.00	0.00	0.00
1,500.0	0.00	0.00	1,500.0	0.0	0.0	0.0	0.00	0.00	0.00
1,551.0	0.00	0.00	1,551.0	0.0	0.0	0.0	0.00	0.00	0.00
9 5/8" Surface									
1,600.0	0.00	0.00	1,600.0	0.0	0.0	0.0	0.00	0.00	0.00
1,700.0	0.00	0.00	1,700.0	0.0	0.0	0.0	0.00	0.00	0.00
1,800.0	0.00	0.00	1,800.0	0.0	0.0	0.0	0.00	0.00	0.00
1,900.0	0.00	0.00	1,900.0	0.0	0.0	0.0	0.00	0.00	0.00
2,000.0	0.00	0.00	2,000.0	0.0	0.0	0.0	0.00	0.00	0.00
2,100.0	0.00	0.00	2,100.0	0.0	0.0	0.0	0.00	0.00	0.00
2,200.0	0.00	0.00	2,200.0	0.0	0.0	0.0	0.00	0.00	0.00
2,300.0	0.00	0.00	2,300.0	0.0	0.0	0.0	0.00	0.00	0.00
2,400.0	0.00	0.00	2,400.0	0.0	0.0	0.0	0.00	0.00	0.00
2,500.0	0.00	0.00	2,500.0	0.0	0.0	0.0	0.00	0.00	0.00
2,600.0	0.00	0.00	2,600.0	0.0	0.0	0.0	0.00	0.00	0.00
2,700.0	0.00	0.00	2,700.0	0.0	0.0	0.0	0.00	0.00	0.00
2,800.0	0.00	0.00	2,800.0	0.0	0.0	0.0	0.00	0.00	0.00
2,900.0	0.00	0.00	2,900.0	0.0	0.0	0.0	0.00	0.00	0.00
3,000.0	0.00	0.00	3,000.0	0.0	0.0	0.0	0.00	0.00	0.00
3,100.0	0.00	0.00	3,100.0	0.0	0.0	0.0	0.00	0.00	0.00
3,200.0	0.00	0.00	3,200.0	0.0	0.0	0.0	0.00	0.00	0.00
3,300.0	0.00	0.00	3,300.0	0.0	0.0	0.0	0.00	0.00	0.00
3,400.0	0.00	0.00	3,400.0	0.0	0.0	0.0	0.00	0.00	0.00
3,500.0	0.00	0.00	3,500.0	0.0	0.0	0.0	0.00	0.00	0.00
3,600.0	0.00	0.00	3,600.0	0.0	0.0	0.0	0.00	0.00	0.00
3,700.0	0.00	0.00	3,700.0	0.0	0.0	0.0	0.00	0.00	0.00
3,800.0	0.00	0.00	3,800.0	0.0	0.0	0.0	0.00	0.00	0.00
3,900.0	0.00	0.00	3,900.0	0.0	0.0	0.0	0.00	0.00	0.00
4,000.0	0.00	0.00	4,000.0	0.0	0.0	0.0	0.00	0.00	0.00
4,100.0	0.00	0.00	4,100.0	0.0	0.0	0.0	0.00	0.00	0.00
4,200.0	0.00	0.00	4,200.0	0.0	0.0	0.0	0.00	0.00	0.00
4,300.0	0.00	0.00	4,300.0	0.0	0.0	0.0	0.00	0.00	0.00
4,400.0	0.00	0.00	4,400.0	0.0	0.0	0.0	0.00	0.00	0.00
4,500.0	0.00	0.00	4,500.0	0.0	0.0	0.0	0.00	0.00	0.00
4,600.0	0.00	0.00	4,600.0	0.0	0.0	0.0	0.00	0.00	0.00
4,700.0	0.00	0.00	4,700.0	0.0	0.0	0.0	0.00	0.00	0.00
4,800.0	0.00	0.00	4,800.0	0.0	0.0	0.0	0.00	0.00	0.00
4,900.0	0.00	0.00	4,900.0	0.0	0.0	0.0	0.00	0.00	0.00
5,000.0	0.00	0.00	5,000.0	0.0	0.0	0.0	0.00	0.00	0.00
5,100.0	0.00	0.00	5,100.0	0.0	0.0	0.0	0.00	0.00	0.00

EOG Resources, Inc.

Planning Report

Database:	EDM_DENVER	Local Co-ordinate Reference:	Well Critter Creek 537-1807H
Company:	Denver Division- Colorado	TVD Reference:	RKB @ 5364.0usft (KB GL+25')
Project:	DJ - Hereford Ranch	MD Reference:	RKB @ 5364.0usft (KB GL+25')
Site:	Critter Creek C18 SWSW Pad	North Reference:	True
Well:	Critter Creek 537-1807H	Survey Calculation Method:	Minimum Curvature
Wellbore:	OH		
Design:	APD Plan (Plat Cert 4/20/15)		

Planned Survey									
Measured Depth (usft)	Inclination (°)	Azimuth (°)	Vertical Depth (usft)	+N/-S (usft)	+E/-W (usft)	Vertical Section (usft)	Dogleg Rate (°/100usft)	Build Rate (°/100usft)	Turn Rate (°/100usft)
5,200.0	0.00	0.00	5,200.0	0.0	0.0	0.0	0.00	0.00	0.00
5,300.0	0.00	0.00	5,300.0	0.0	0.0	0.0	0.00	0.00	0.00
5,400.0	0.00	0.00	5,400.0	0.0	0.0	0.0	0.00	0.00	0.00
5,500.0	0.00	0.00	5,500.0	0.0	0.0	0.0	0.00	0.00	0.00
5,600.0	0.00	0.00	5,600.0	0.0	0.0	0.0	0.00	0.00	0.00
5,700.0	0.00	0.00	5,700.0	0.0	0.0	0.0	0.00	0.00	0.00
5,800.0	0.00	0.00	5,800.0	0.0	0.0	0.0	0.00	0.00	0.00
5,900.0	0.00	0.00	5,900.0	0.0	0.0	0.0	0.00	0.00	0.00
6,000.0	0.00	0.00	6,000.0	0.0	0.0	0.0	0.00	0.00	0.00
6,100.0	0.00	0.00	6,100.0	0.0	0.0	0.0	0.00	0.00	0.00
6,200.0	0.00	0.00	6,200.0	0.0	0.0	0.0	0.00	0.00	0.00
6,300.0	0.00	0.00	6,300.0	0.0	0.0	0.0	0.00	0.00	0.00
6,400.0	0.00	0.00	6,400.0	0.0	0.0	0.0	0.00	0.00	0.00
6,500.0	0.00	0.00	6,500.0	0.0	0.0	0.0	0.00	0.00	0.00
6,600.0	0.00	0.00	6,600.0	0.0	0.0	0.0	0.00	0.00	0.00
6,700.0	0.00	0.00	6,700.0	0.0	0.0	0.0	0.00	0.00	0.00
6,800.0	0.00	0.00	6,800.0	0.0	0.0	0.0	0.00	0.00	0.00
6,900.0	0.00	0.00	6,900.0	0.0	0.0	0.0	0.00	0.00	0.00
7,000.0	0.00	0.00	7,000.0	0.0	0.0	0.0	0.00	0.00	0.00
7,100.0	0.00	0.00	7,100.0	0.0	0.0	0.0	0.00	0.00	0.00
7,200.0	0.00	0.00	7,200.0	0.0	0.0	0.0	0.00	0.00	0.00
7,287.5	0.00	0.00	7,287.5	0.0	0.0	0.0	0.00	0.00	0.00
7,300.0	1.50	335.80	7,300.0	0.1	-0.1	0.2	12.00	12.00	0.00
7,325.0	4.50	335.80	7,325.0	1.3	-0.6	1.4	12.00	12.00	0.00
7,350.0	7.50	335.80	7,349.8	3.7	-1.7	3.8	12.00	12.00	0.00
7,375.0	10.50	335.80	7,374.5	7.3	-3.3	7.4	12.00	12.00	0.00
7,400.0	13.50	335.80	7,399.0	12.0	-5.4	12.2	12.00	12.00	0.00
7,415.5	15.36	335.80	7,414.0	15.6	-7.0	15.8	12.00	12.00	0.00
Sharon Springs									
7,425.0	16.50	335.80	7,423.1	17.9	-8.1	18.2	12.00	12.00	0.00
7,450.0	19.50	335.80	7,446.9	25.0	-11.2	25.4	12.00	12.00	0.00
7,460.8	20.79	335.80	7,457.0	28.4	-12.7	28.8	12.00	12.00	0.00
Niobrara									
7,475.0	22.50	335.80	7,470.2	33.2	-14.9	33.7	12.00	12.00	0.00
7,500.0	25.50	335.80	7,493.1	42.4	-19.1	43.1	12.00	12.00	0.00
7,525.0	28.50	335.80	7,515.3	52.8	-23.7	53.7	12.00	12.00	0.00
7,550.0	31.50	335.80	7,537.0	64.2	-28.8	65.3	12.00	12.00	0.00
7,575.0	34.50	335.80	7,557.9	76.6	-34.4	77.9	12.00	12.00	0.00
7,600.0	37.50	335.80	7,578.2	90.0	-40.4	91.5	12.00	12.00	0.00
7,625.0	40.50	335.80	7,597.6	104.3	-46.9	106.1	12.00	12.00	0.00
7,650.0	43.50	335.80	7,616.2	119.6	-53.8	121.6	12.00	12.00	0.00
7,675.0	46.50	335.80	7,633.8	135.7	-61.0	138.0	12.00	12.00	0.00
7,700.0	49.50	335.80	7,650.6	152.7	-68.6	155.3	12.00	12.00	0.00
7,725.0	52.50	335.80	7,666.3	170.4	-76.6	173.3	12.00	12.00	0.00
7,750.0	55.50	335.80	7,681.0	188.8	-84.9	192.0	12.00	12.00	0.00
7,775.0	58.50	335.80	7,694.6	208.0	-93.5	211.5	12.00	12.00	0.00
7,800.0	61.50	335.80	7,707.1	227.7	-102.3	231.6	12.00	12.00	0.00
7,825.0	64.50	335.80	7,718.5	248.0	-111.5	252.2	12.00	12.00	0.00
7,850.0	67.50	335.80	7,728.6	268.8	-120.8	273.4	12.00	12.00	0.00
7,875.0	70.50	335.80	7,737.6	290.1	-130.4	295.1	12.00	12.00	0.00
7,900.0	73.50	335.80	7,745.3	311.8	-140.1	317.1	12.00	12.00	0.00
7,925.0	76.50	335.80	7,751.8	333.8	-150.0	339.5	12.00	12.00	0.00
7,935.0	77.70	335.80	7,754.0	342.7	-154.0	348.5	12.00	12.00	0.00

EOG Resources, Inc.

Planning Report

Database:	EDM_DENVER	Local Co-ordinate Reference:	Well Critter Creek 537-1807H
Company:	Denver Division- Colorado	TVD Reference:	RKB @ 5364.0usft (KB GL+25')
Project:	DJ - Hereford Ranch	MD Reference:	RKB @ 5364.0usft (KB GL+25')
Site:	Critter Creek C18 SWSW Pad	North Reference:	True
Well:	Critter Creek 537-1807H	Survey Calculation Method:	Minimum Curvature
Wellbore:	OH		
Design:	APD Plan (Plat Cert 4/20/15)		

Planned Survey									
Measured Depth (usft)	Inclination (°)	Azimuth (°)	Vertical Depth (usft)	+N/-S (usft)	+E/-W (usft)	Vertical Section (usft)	Dogleg Rate (°/100usft)	Build Rate (°/100usft)	Turn Rate (°/100usft)
Codell									
7,950.0	79.50	335.80	7,757.0	356.1	-160.1	362.2	12.00	12.00	0.00
7,975.0	82.50	335.80	7,760.9	378.7	-170.2	385.1	12.00	12.00	0.00
8,000.0	85.50	335.80	7,763.5	401.3	-180.4	408.1	12.00	12.00	0.00
8,025.0	88.50	335.80	7,764.8	424.1	-190.6	431.3	12.00	12.00	0.00
8,037.5	90.00	335.80	7,765.0	435.5	-195.7	442.9	12.00	12.00	0.00
Codell Target - 7" Intermediate (Opt 2)									
8,100.0	90.00	337.68	7,765.0	492.9	-220.4	501.2	3.00	0.00	3.00
8,200.0	90.00	340.68	7,765.0	586.4	-256.0	596.0	3.00	0.00	3.00
8,300.0	90.00	343.68	7,765.0	681.6	-286.6	692.3	3.00	0.00	3.00
8,400.0	90.00	346.68	7,765.0	778.2	-312.1	789.9	3.00	0.00	3.00
8,500.0	90.00	349.68	7,765.0	876.1	-332.6	888.5	3.00	0.00	3.00
8,600.0	90.00	352.68	7,765.0	974.9	-348.0	987.9	3.00	0.00	3.00
8,700.0	90.00	355.68	7,765.0	1,074.4	-358.1	1,087.7	3.00	0.00	3.00
8,800.0	90.00	358.68	7,765.0	1,174.2	-363.1	1,187.7	3.00	0.00	3.00
8,844.3	90.00	0.00	7,765.0	1,218.5	-363.6	1,231.9	3.00	0.00	3.00
8,900.0	90.00	0.00	7,765.0	1,274.2	-363.6	1,287.6	0.00	0.00	0.00
9,000.0	90.00	0.00	7,765.0	1,374.2	-363.6	1,387.5	0.00	0.00	0.00
9,100.0	90.00	0.00	7,765.0	1,474.2	-363.5	1,487.4	0.00	0.00	0.00
9,200.0	90.00	0.00	7,765.0	1,574.2	-363.5	1,587.4	0.00	0.00	0.00
9,300.0	90.00	0.00	7,765.0	1,674.2	-363.5	1,687.3	0.00	0.00	0.00
9,400.0	90.00	0.00	7,765.0	1,774.2	-363.5	1,787.2	0.00	0.00	0.00
9,500.0	90.00	0.00	7,765.0	1,874.2	-363.5	1,887.1	0.00	0.00	0.00
9,600.0	90.00	0.00	7,765.0	1,974.2	-363.5	1,987.0	0.00	0.00	0.00
9,700.0	90.00	0.00	7,765.0	2,074.2	-363.5	2,087.0	0.00	0.00	0.00
9,800.0	90.00	0.00	7,765.0	2,174.2	-363.5	2,186.9	0.00	0.00	0.00
9,900.0	90.00	0.00	7,765.0	2,274.2	-363.5	2,286.8	0.00	0.00	0.00
10,000.0	90.00	0.00	7,765.0	2,374.2	-363.5	2,386.7	0.00	0.00	0.00
10,100.0	90.00	0.00	7,765.0	2,474.2	-363.5	2,486.7	0.00	0.00	0.00
10,200.0	90.00	0.00	7,765.0	2,574.2	-363.5	2,586.6	0.00	0.00	0.00
10,300.0	90.00	0.00	7,765.0	2,674.2	-363.5	2,686.5	0.00	0.00	0.00
10,400.0	90.00	0.00	7,765.0	2,774.2	-363.5	2,786.4	0.00	0.00	0.00
10,500.0	90.00	0.00	7,765.0	2,874.2	-363.5	2,886.3	0.00	0.00	0.00
10,600.0	90.00	0.00	7,765.0	2,974.2	-363.5	2,986.3	0.00	0.00	0.00
10,700.0	90.00	0.00	7,765.0	3,074.2	-363.5	3,086.2	0.00	0.00	0.00
10,800.0	90.00	0.00	7,765.0	3,174.2	-363.5	3,186.1	0.00	0.00	0.00
10,900.0	90.00	0.00	7,765.0	3,274.2	-363.4	3,286.0	0.00	0.00	0.00
11,000.0	90.00	0.00	7,765.0	3,374.2	-363.4	3,385.9	0.00	0.00	0.00
11,100.0	90.00	0.00	7,765.0	3,474.2	-363.4	3,485.9	0.00	0.00	0.00
11,200.0	90.00	0.00	7,765.0	3,574.2	-363.4	3,585.8	0.00	0.00	0.00
11,300.0	90.00	0.00	7,765.0	3,674.2	-363.4	3,685.7	0.00	0.00	0.00
11,400.0	90.00	0.00	7,765.0	3,774.2	-363.4	3,785.6	0.00	0.00	0.00
11,500.0	90.00	0.00	7,765.0	3,874.2	-363.4	3,885.6	0.00	0.00	0.00
11,600.0	90.00	0.00	7,765.0	3,974.2	-363.4	3,985.5	0.00	0.00	0.00
11,700.0	90.00	0.00	7,765.0	4,074.2	-363.4	4,085.4	0.00	0.00	0.00
11,800.0	90.00	0.00	7,765.0	4,174.2	-363.4	4,185.3	0.00	0.00	0.00
11,900.0	90.00	0.00	7,765.0	4,274.2	-363.4	4,285.2	0.00	0.00	0.00
12,000.0	90.00	0.00	7,765.0	4,374.2	-363.4	4,385.2	0.00	0.00	0.00
12,100.0	90.00	0.00	7,765.0	4,474.2	-363.4	4,485.1	0.00	0.00	0.00
12,200.0	90.00	0.00	7,765.0	4,574.2	-363.4	4,585.0	0.00	0.00	0.00
12,300.0	90.00	0.00	7,765.0	4,674.2	-363.4	4,684.9	0.00	0.00	0.00
12,400.0	90.00	0.00	7,765.0	4,774.2	-363.4	4,784.9	0.00	0.00	0.00
12,500.0	90.00	0.00	7,765.0	4,874.2	-363.4	4,884.8	0.00	0.00	0.00

EOG Resources, Inc.

Planning Report

Database:	EDM_DENVER	Local Co-ordinate Reference:	Well Critter Creek 537-1807H
Company:	Denver Division- Colorado	TVD Reference:	RKB @ 5364.0usft (KB GL+25')
Project:	DJ - Hereford Ranch	MD Reference:	RKB @ 5364.0usft (KB GL+25')
Site:	Critter Creek C18 SWSW Pad	North Reference:	True
Well:	Critter Creek 537-1807H	Survey Calculation Method:	Minimum Curvature
Wellbore:	OH		
Design:	APD Plan (Plat Cert 4/20/15)		

Planned Survey									
Measured Depth (usft)	Inclination (°)	Azimuth (°)	Vertical Depth (usft)	+N/-S (usft)	+E/-W (usft)	Vertical Section (usft)	Dogleg Rate (°/100usft)	Build Rate (°/100usft)	Turn Rate (°/100usft)
12,600.0	90.00	0.00	7,765.0	4,974.2	-363.3	4,984.7	0.00	0.00	0.00
12,700.0	90.00	0.00	7,765.0	5,074.2	-363.3	5,084.6	0.00	0.00	0.00
12,800.0	90.00	0.00	7,765.0	5,174.2	-363.3	5,184.5	0.00	0.00	0.00
12,900.0	90.00	0.00	7,765.0	5,274.2	-363.3	5,284.5	0.00	0.00	0.00
13,000.0	90.00	0.00	7,765.0	5,374.2	-363.3	5,384.4	0.00	0.00	0.00
13,100.0	90.00	0.00	7,765.0	5,474.2	-363.3	5,484.3	0.00	0.00	0.00
13,200.0	90.00	0.00	7,765.0	5,574.2	-363.3	5,584.2	0.00	0.00	0.00
13,300.0	90.00	0.00	7,765.0	5,674.2	-363.3	5,684.2	0.00	0.00	0.00
13,400.0	90.00	0.00	7,765.0	5,774.2	-363.3	5,784.1	0.00	0.00	0.00
13,500.0	90.00	0.00	7,765.0	5,874.2	-363.3	5,884.0	0.00	0.00	0.00
13,600.0	90.00	0.00	7,765.0	5,974.2	-363.3	5,983.9	0.00	0.00	0.00
13,700.0	90.00	0.00	7,765.0	6,074.2	-363.3	6,083.8	0.00	0.00	0.00
13,800.0	90.00	0.00	7,765.0	6,174.2	-363.3	6,183.8	0.00	0.00	0.00
13,900.0	90.00	0.00	7,765.0	6,274.2	-363.3	6,283.7	0.00	0.00	0.00
14,000.0	90.00	0.00	7,765.0	6,374.2	-363.3	6,383.6	0.00	0.00	0.00
14,100.0	90.00	0.00	7,765.0	6,474.2	-363.3	6,483.5	0.00	0.00	0.00
14,200.0	90.00	0.00	7,765.0	6,574.2	-363.3	6,583.4	0.00	0.00	0.00
14,300.0	90.00	0.00	7,765.0	6,674.2	-363.3	6,683.4	0.00	0.00	0.00
14,400.0	90.00	0.00	7,765.0	6,774.2	-363.2	6,783.3	0.00	0.00	0.00
14,500.0	90.00	0.00	7,765.0	6,874.2	-363.2	6,883.2	0.00	0.00	0.00
14,600.0	90.00	0.00	7,765.0	6,974.2	-363.2	6,983.1	0.00	0.00	0.00
14,700.0	90.00	0.00	7,765.0	7,074.2	-363.2	7,083.1	0.00	0.00	0.00
14,800.0	90.00	0.00	7,765.0	7,174.2	-363.2	7,183.0	0.00	0.00	0.00
14,900.0	90.00	0.00	7,765.0	7,274.2	-363.2	7,282.9	0.00	0.00	0.00
15,000.0	90.00	0.00	7,765.0	7,374.2	-363.2	7,382.8	0.00	0.00	0.00
15,100.0	90.00	0.00	7,765.0	7,474.2	-363.2	7,482.7	0.00	0.00	0.00
15,200.0	90.00	0.00	7,765.0	7,574.2	-363.2	7,582.7	0.00	0.00	0.00
15,300.0	90.00	0.00	7,765.0	7,674.2	-363.2	7,682.6	0.00	0.00	0.00
15,400.0	90.00	0.00	7,765.0	7,774.2	-363.2	7,782.5	0.00	0.00	0.00
15,500.0	90.00	0.00	7,765.0	7,874.2	-363.2	7,882.4	0.00	0.00	0.00
15,600.0	90.00	0.00	7,765.0	7,974.2	-363.2	7,982.4	0.00	0.00	0.00
15,700.0	90.00	0.00	7,765.0	8,074.2	-363.2	8,082.3	0.00	0.00	0.00
15,800.0	90.00	0.00	7,765.0	8,174.2	-363.2	8,182.2	0.00	0.00	0.00
15,900.0	90.00	0.00	7,765.0	8,274.2	-363.2	8,282.1	0.00	0.00	0.00
16,000.0	90.00	0.00	7,765.0	8,374.2	-363.2	8,382.0	0.00	0.00	0.00
16,100.0	90.00	0.00	7,765.0	8,474.2	-363.1	8,482.0	0.00	0.00	0.00
16,200.0	90.00	0.00	7,765.0	8,574.2	-363.1	8,581.9	0.00	0.00	0.00
16,300.0	90.00	0.00	7,765.0	8,674.2	-363.1	8,681.8	0.00	0.00	0.00
16,400.0	90.00	0.00	7,765.0	8,774.2	-363.1	8,781.7	0.00	0.00	0.00
16,500.0	90.00	0.00	7,765.0	8,874.2	-363.1	8,881.7	0.00	0.00	0.00
16,600.0	90.00	0.00	7,765.0	8,974.2	-363.1	8,981.6	0.00	0.00	0.00
16,700.0	90.00	0.00	7,765.0	9,074.2	-363.1	9,081.5	0.00	0.00	0.00
16,800.0	90.00	0.00	7,765.0	9,174.2	-363.1	9,181.4	0.00	0.00	0.00
16,819.3	90.00	0.00	7,765.0	9,193.5	-363.1	9,200.7	0.00	0.00	0.00
CC 537-1807H PBHL									

EOG Resources, Inc.

Planning Report

Database:	EDM_DENVER	Local Co-ordinate Reference:	Well Critter Creek 537-1807H
Company:	Denver Division- Colorado	TVD Reference:	RKB @ 5364.0usft (KB GL+25')
Project:	DJ - Hereford Ranch	MD Reference:	RKB @ 5364.0usft (KB GL+25')
Site:	Critter Creek C18 SWSW Pad	North Reference:	True
Well:	Critter Creek 537-1807H	Survey Calculation Method:	Minimum Curvature
Wellbore:	OH		
Design:	APD Plan (Plat Cert 4/20/15)		

Design Targets									
Target Name	Dip Angle	Dip Dir.	TVD	+N/-S	+E/-W	Northing	Easting	Latitude	Longitude
- hit/miss target	(°)	(°)	(usft)	(usft)	(usft)	(usft)	(usft)		
- Shape									
CC 537-1807H PBHL	0.00	0.00	7,765.0	9,193.5	-363.1	587,798.87	2,281,336.00	40° 56' 32.877 N	104° 28' 54.158 W
- plan hits target center									
- Point									

Casing Points					
Measured Depth	Vertical Depth	Name		Casing Diameter	Hole Diameter
(usft)	(usft)			(")	(")
1,551.0	1,551.0	9 5/8" Surface		9-5/8	13-1/2
8,037.5	7,765.0	7" Intermediate (Opt 2)		7	8-3/4
16,819.3	7,765.0	5 1/2" Production (Opt 1)		5-1/2	7-7/8
16,819.3	7,765.0	4 1/2" Liner (Opt 2)		4-1/2	6-1/8

Formations						
Measured Depth	Vertical Depth	Name		Lithology	Dip	Dip Direction
(usft)	(usft)				(°)	(°)
7,415.5	7,414.0	Sharon Springs			0.00	
7,460.8	7,457.0	Niobrara			0.00	
7,935.0	7,754.0	Codell			0.00	
8,037.5	7,765.0	Codell Target			0.00	