

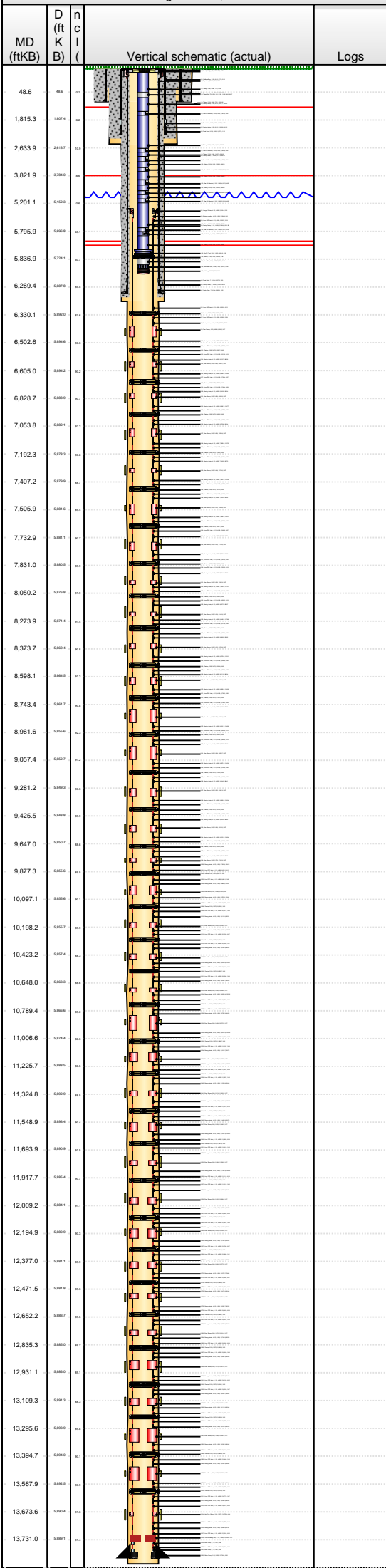


Lease Review All - Frac Summary

Well Name: RAZOR 11G-1409A

API Number 051233872800			WPC ID 1CO0761178			Well Permit Number			Field Name DJ Horizontal Niobrara			County Weld			State CO
Well Configuration Type Lateral/Horizontal					Orig KB Elv (ft) 4,989.70		Ground Elevation (ft) 4,972.70		Casing Flange Elevation (ft)		Tubing Head Elevation (ft)		Total Depth (ftKB) 13,760.0		
Original Spud Date 2/10/2015		Completion Date 5/19/2015		Asset Group Redtail			Responsible Engineer Charles Ohlson			N/S Dist (ft) 2,396.0		N/S Ref FNL	E/W Dist (ft) 1,783.0		E/W Ref FEL
Lot		Quarter 1 SW	Quarter 2 NE	Quarter 3	Quarter 4	Section 11	Section Suffix	Section Type	Township 10	Township N/S Dir N	Range 58	Range E/W Dir W	Meridian		

Lateral/Horizontal - Original Hole, 8/19/2015 3:15:42 PM



Wellbore Sections						
Wellbore Name			Start Date	Size (in)	Act Top (ftKB)	Act Btm (ftKB)
Original Hole			12/18/2014	20	17.0	97.0
Original Hole			2/10/2015	13 1/2	97.0	1,879.0
Original Hole			2/12/2015	8 3/4	1,879.0	6,281.0
Original Hole			2/14/2015	6 1/8	6,281.0	13,760.0
Conductor Pipe, 97.0ftKB						
OD (in)	Wt (lb/ft)	Grade	Top (ftKB)	Btm (ftKB)	Len (ft)	Item Des
16	84.00	J-55	17.0	97.0	80.00	Casing Joints
Surface Csg, 1,859.3ftKB						
OD (in)	Wt (lb/ft)	Grade	Top (ftKB)	Btm (ftKB)	Len (ft)	Item Des
9 5/8	36.00	J-55	17.0	17.0	0.00	Landing Joint
9 5/8	36.00	J-55	17.0	22.0	5.00	Wellhead/Pup
9 5/8	36.00	J-55	22.0	1,815.3	1,793.25	Casing Joints
9 5/8	36.00	J-55	1,815.3	1,816.8	1.50	Float Collar
9 5/8	36.00	J-55	1,816.8	1,857.8	41.02	Casing Joints
9 5/8	36.00	J-55	1,857.8	1,859.3	1.50	Float Shoe
Frac String, 5,223.8ftKB						
OD (in)	Wt (lb/ft)	Grade	Top (ftKB)	Btm (ftKB)	Len (ft)	Item Des
7			17.1	18.7	1.60	Casing Hanger
4 1/2	11.60	P-110	18.7	59.4	40.70	Casing Joints
4 1/2			59.4	61.4	1.95	Casing PUP Joint
4 1/2	11.60	P-110	61.4	5,222.2	5,160.86	Casing Joints
5			5,222.2	5,223.8	1.58	Seal Assembly
Intermediate Csg, 6,270.8ftKB						
OD (in)	Wt (lb/ft)	Grade	Top (ftKB)	Btm (ftKB)	Len (ft)	Item Des
7			17.0	17.0	0.00	Landing Joint
7			17.0	18.0	1.00	Casing Hanger
7	29.00	HCL-80	18.0	21.8	3.75	Pup Joint
7	29.00	HCL-80	21.8	6,227.5	6,205.75	Casing Joints
7			6,227.5	6,229.0	1.50	Float Collar
7	29.00	HCL-80	6,229.0	6,269.3	40.29	Casing Joints
7			6,269.3	6,270.8	1.50	Guide Shoe
Liner, 13,740.0ftKB						
OD (in)	Wt (lb/ft)	Grade	Top (ftKB)	Btm (ftKB)	Len (ft)	Item Des
4 1/2			5,219.4	5,224.8	5.35	Hanger Packer
4 1/2			5,224.8	5,225.7	0.91	Bottom coupling
4 1/2	11.60	P-110	5,225.7	5,228.8	3.10	Liner PUP Joint
4 1/2	11.60	P-110	5,228.8	6,320.1	1,091.35	Casing Joints
4 1/2	11.60	P-110	6,320.1	6,326.3	6.12	Liner PUP Joint
5 5/8			6,326.3	6,330.2	3.95	Packer
4 1/2	11.60	P-110	6,330.2	6,333.3	3.09	Liner PUP Joint
4 1/2	11.60	P-110	6,333.3	6,418.5	85.16	Casing Joints
5.63			6,418.5	6,421.1	2.67	Frac Sleeve
4 1/2	11.60	P-110	6,421.1	6,502.6	81.43	Casing Joints
4 1/2	11.60	P-110	6,502.6	6,508.7	6.12	Liner PUP Joint
5 5/8			6,508.7	6,512.6	3.95	Packer
4 1/2	11.60	P-110	6,512.6	6,515.7	3.10	Liner PUP Joint
4 1/2	11.60	P-110	6,515.7	6,602.1	86.38	Casing Joints
5.63			6,602.1	6,604.8	2.67	Frac Sleeve
4 1/2	11.60	P-110	6,604.8	6,730.4	125.60	Casing Joints
4 1/2	11.60	P-110	6,730.4	6,736.5	6.07	Liner PUP Joint
5 5/8			6,736.5	6,740.4	3.95	Packer
4 1/2	11.60	P-110	6,740.4	6,743.5	3.09	Liner PUP Joint
4 1/2	11.60	P-110	6,743.5	6,826.0	82.54	Casing Joints
5.63			6,826.0	6,828.7	2.67	Frac Sleeve
4 1/2	11.60	P-110	6,828.7	6,957.5	128.77	Casing Joints
4 1/2	11.60	P-110	6,957.5	6,963.6	6.08	Liner PUP Joint
5 5/8			6,963.6	6,967.5	3.95	Packer
4 1/2	11.60	P-110	6,967.5	6,970.6	3.08	Liner PUP Joint
4 1/2	11.60	P-110	6,970.6	7,053.9	83.34	Casing Joints
5.63			7,053.9	7,056.6	2.67	Frac Sleeve
4 1/2	11.60	P-110	7,056.6	7,182.4	125.76	Casing Joints
4 1/2	11.60	P-110	7,182.4	7,188.5	6.12	Liner PUP Joint
5 5/8			7,188.5	7,192.4	3.95	Packer
4 1/2	11.60	P-110	7,192.4	7,195.5	3.08	Liner PUP Joint
4 1/2	11.60	P-110	7,195.5	7,279.2	83.70	Casing Joints
5.63			7,279.2	7,281.9	2.67	Frac Sleeve
4 1/2	11.60	P-110	7,281.9	7,407.2	125.34	Casing Joints
4 1/2	11.60	P-110	7,407.2	7,413.3	6.06	Liner PUP Joint
5 5/8			7,413.3	7,417.2	3.95	Packer
4 1/2	11.60	P-110	7,417.2	7,420.3	3.11	Liner PUP Joint
4 1/2	11.60	P-110	7,420.3	7,503.8	83.44	Casing Joints
5.63			7,503.8	7,506.4	2.67	Frac Sleeve





Lease Review All - Frac Summary

Well Name: RAZOR 11G-1409A

API Number 051233872800				WPC ID 1CO0761178				Well Permit Number				Field Name DJ Horizontal Niobrara				County Weld		State CO							
Well Configuration Type Lateral/Horizontal				Orig KB Elv (ft) 4,989.70				Ground Elevation (ft) 4,972.70				Casing Flange Elevation (ft)				Tubing Head Elevation (ft)				Total Depth (ftKB) 13,760.0					
Original Spud Date 2/10/2015				Completion Date 5/19/2015				Asset Group Redtail				Responsible Engineer Charles Ohlson				N/S Dist (ft) 2,396.0				N/S Ref FNL		E/W Dist (ft) 1,783.0		E/W Ref FEL	
Lot		Quarter 1 SW		Quarter 2 NE		Quarter 3		Quarter 4		Section 11		Section Suffix		Section Type		Township 10 N		Township N/S Dir		Range 58 W		Range E/W Dir		Meridian	
Lateral/Horizontal - Original Hole, 8/19/2015 3:15:53 PM										OD (in)		Wt (lb/ft)		Grade		Top (ftKB)		Btm (ftKB)		Len (ft)		Item Des			
MD (ftKB)	D (ft K B)	n ( K B)	c ( K B)	l ( K B)	Vertical schematic (actual)	Logs																			
							5.63									10,195.4	10,198.1	2.67	Frac Sleeve						
							4 1/2	11.60	P-110							10,198.1	10,323.8	125.70	Casing Joints						
							4 1/2	11.60	P-110							10,323.8	10,329.8	6.07	Liner PUP Joint						
							5 5/8									10,329.8	10,333.8	3.95	Packer						
48.6	0.02	0.02					4 1/2	11.60	P-110							10,333.8	10,336.9	3.11	Liner PUP Joint						
1,815.3	1.8074	0.02					4 1/2	11.60	P-110							10,336.9	10,423.1	86.22	Casing Joints						
2,633.9	2.6037	0.02					5.63									10,423.1	10,425.8	2.67	Frac Sleeve						
3,821.9	3.7843	0.04					4 1/2	11.60	P-110							10,425.8	10,549.6	123.81	Casing Joints						
5,201.1	5.1623	0.04					4 1/2	11.60	P-110							10,549.6	10,555.7	6.09	Liner PUP Joint						
5,795.9	5.7663	0.01					5 5/8									10,555.7	10,559.6	3.95	Packer						
5,836.9	5.8069	0.01					4 1/2	11.60	P-110							10,559.6	10,562.7	3.08	Liner PUP Joint						
6,269.4	6.2397	0.01					4 1/2	11.60	P-110							10,562.7	10,648.3	85.53	Casing Joints						
6,330.1	6.3004	0.04					5.63									10,648.3	10,650.9	2.67	Frac Sleeve						
6,502.6	6.4643	0.01					4 1/2	11.60	P-110							10,650.9	10,776.2	125.26	Casing Joints						
6,605.0	6.5742	0.01					4 1/2	11.60	P-110							10,776.2	10,782.3	6.09	Liner PUP Joint						
6,828.7	6.7943	0.01					5 5/8									10,782.3	10,786.2	3.95	Packer						
7,053.8	7.0237	0.01					4 1/2	11.60	P-110							10,786.2	10,789.3	3.09	Liner PUP Joint						
7,192.3	7.1623	0.04					4 1/2	11.60	P-110							10,789.3	10,873.7	84.38	Casing Joints						
7,407.2	7.3774	0.01					5.63									10,873.7	10,876.4	2.67	Frac Sleeve						
7,505.9	7.4759	0.01					4 1/2	11.60	P-110							10,876.4	11,000.6	124.28	Casing Joints						
7,732.9	7.7033	0.04					4 1/2	11.60	P-110							11,000.6	11,006.7	6.07	Liner PUP Joint						
7,831.0	7.8014	0.01					5 5/8									11,006.7	11,010.7	3.95	Packer						
8,050.2	8.0204	0.01					4 1/2	11.60	P-110							11,010.7	11,013.7	3.08	Liner PUP Joint						
8,273.9	8.2443	0.01					4 1/2	11.60	P-110							11,013.7	11,097.5	83.72	Casing Joints						
8,373.7	8.3437	0.04					5.63									11,097.5	11,100.1	2.67	Frac Sleeve						
8,598.1	8.5684	0.01					4 1/2	11.60	P-110							11,100.1	11,225.7	125.53	Casing Joints						
8,743.4	8.7137	0.01					4 1/2	11.60	P-110							11,225.7	11,231.7	6.08	Liner PUP Joint						
8,961.6	8.9314	0.01					5 5/8									11,231.7	11,235.7	3.95	Packer						
9,057.4	9.0277	0.01					4 1/2	11.60	P-110							11,235.7	11,238.8	3.10	Liner PUP Joint						
9,281.2	9.2514	0.01					4 1/2	11.60	P-110							11,238.8	11,322.2	83.43	Casing Joints						
9,425.5	9.3957	0.01					5.63									11,322.2	11,324.9	2.67	Frac Sleeve						
9,647.0	9.6174	0.01					4 1/2	11.60	P-110							11,324.9	11,451.9	126.98	Casing Joints						
9,877.3	9.8474	0.01					4 1/2	11.60	P-110							11,451.9	11,458.0	6.14	Liner PUP Joint						
10,097.1	10.0674	0.01					5 5/8									11,458.0	11,462.0	3.95	Packer						
10,198.2	10.1684	0.01					4 1/2	11.60	P-110							11,462.0	11,465.0	3.07	Liner PUP Joint						
10,423.2	10.3937	0.01					4 1/2	11.60	P-110							11,465.0	11,548.7	83.70	Casing Joints						
10,648.0	10.6184	0.01					5.63									11,548.7	11,551.4	2.67	Frac Sleeve						
10,789.4	10.7637	0.01					4 1/2	11.60	P-110							11,551.4	11,680.9	129.52	Casing Joints						
11,006.6	10.9744	0.01					4 1/2	11.60	P-110							11,680.9	11,687.0	6.08	Liner PUP Joint						
11,225.7	11.2003	0.01					5 5/8									11,687.0	11,691.0	3.95	Packer						
11,324.8	11.2909	0.01					4 1/2	11.60	P-110							11,691.0	11,694.1	3.10	Liner PUP Joint						
11,548.9	11.5244	0.01					4 1/2	11.60	P-110							11,694.1	11,780.2	86.17	Casing Joints						
11,693.9	11.6734	0.01					5.63									11,780.2	11,782.9	2.67	Frac Sleeve						
11,917.7	11.8914	0.01					4 1/2	11.60	P-110							11,782.9	11,911.4	128.54	Casing Joints						
12,009.2	12.0001	0.01					4 1/2	11.60	P-110							11,911.4	11,917.6	6.13	Liner PUP Joint						
12,194.9	12.1749	0.01					5 5/8									11,917.6	11,921.5	3.96	Packer						
12,377.0	12.3511	0.01					4 1/2	11.60	P-110							11,921.5	11,924.6	3.06	Liner PUP Joint						
12,471.5	12.4416	0.01					4 1/2	11.60	P-110							11,924.6	12,006.4	81.81	Casing Joints						
12,652.2	12.6227	0.01					5.63									12,006.4	12,009.1	2.67	Frac Sleeve						
12,835.3	12.8053	0.01					4 1/2	11.60	P-110							12,009.1	12,095.6	86.57	Casing Joints						
12,931.1	12.9013	0.01					4 1/2	11.60	P-110							12,095.6	12,101.7	6.09	Liner PUP Joint						
13,109.3	13.0813	0.01					5 5/8									12,101.7	12,105.7	3.96	Packer						
13,295.6	13.2659	0.01					4 1/2	11.60	P-110							12,105.7	12,108.8	3.09	Liner PUP Joint						
13,394.7	13.3653	0.01					4 1/2	11.60	P-110							12,108.8	12,192.8	83.99	Casing Joints						
13,567.9	13.5383	0.01					5.63									12,192.8	12,195.4	2.67	Frac Sleeve						
13,673.6	13.6434	0.01					4 1/2	11.60	P-110							12,195.4	12,278.8	83.35	Casing Joints						
13,731.0	13.7011	0.01					4 1/2	11.60	P-110							12,278.8	12,284.9	6.07	Liner PUP Joint						
							5 5/8									12,284.9	12,288.8	3.95	Packer						
							4 1/2	11.60	P-110							12,288.8	12,291.9	3.11	Liner PUP Joint						
							4 1/2	11.60	P-110							12,291.9	12,377.0	85.08	Casing Joints						
							5.63									12,377.0	12,379.7	2.67	Frac Sleeve						
							4 1/2	11.60	P-110							12,379.7	12,458.5	78.84	Casing Joints						
							4 1/2	11.60	P-110							12,458.5	12,464.6	6.07	Liner PUP Joint						
							5 5/8									12,464.6	12,468.5	3.95	Packer						
							4 1/2	11.60	P-110							12,468.5	12,471.6	3.09	Liner PUP Joint						
							4 1/2	11.60	P-110							12,471.6	12,554.1	82.44	Casing Joints						
							5.63									12,554.1	12,556.7	2.67	Frac Sleeve						
							4 1/2	11.60	P-110							12,556.7	12,642.0	85.32	Casing Joints						
							4 1/2	11.60	P-110							12,642.0	12,648.1	6.09	Liner PUP Joint						
							5 5/8									12,648.1	12,652.1	3.95	Packer						
							4 1/2	11.60	P-110							12,652.1	12,655.2	3.10	Liner PUP Joint						





Lease Review All - Frac Summary

Well Name: RAZOR 11G-1409A

API Number 051233872800		WPC ID 1CO0761178		Well Permit Number		Field Name DJ Horizontal Niobrara		County Weld		State CO							
Well Configuration Type Lateral/Horizontal				Orig KB Elv (ft) 4,989.70		Ground Elevation (ft) 4,972.70		Casing Flange Elevation (ft)		Tubing Head Elevation (ft)		Total Depth (ftKB) 13,760.0					
Original Spud Date 2/10/2015		Completion Date 5/19/2015		Asset Group Redtail		Responsible Engineer Charles Ohlson			N/S Dist (ft) 2,396.0		N/S Ref FNL		E/W Dist (ft) 1,783.0		E/W Ref FEL		
Lot		Quarter 1 SW	Quarter 2 NE	Quarter 3	Quarter 4	Section 11	Section Suffix	Section Type	Township 10 N		Township N/S Dir		Range 58 W		Meridian		
Lateral/Horizontal - Original Hole, 8/19/2015 3:15:59 PM							OD (in)	Wt (lb/ft)	Grade	Top (ftKB)	Btm (ftKB)	Len (ft)	Item Des				
MD (ftKB)	D (ft K B)	n ( K B)	c ( K B)	l ( K B)	V ( K B)	Logs	4 1/2	11.60	P-110	12,655.2	12,741.4	86.17	Casing Joints				
							5.63			12,741.4	12,744.0	2.67	Frac Sleeve				
							4 1/2	11.60	P-110	12,744.0	12,829.2	85.20	Casing Joints				
							4 1/2	11.60	P-110	12,829.2	12,835.3	6.09	Liner PUP Joint				
							5 5/8			12,835.3	12,839.3	3.95	Packer				
							4 1/2	11.60	P-110	12,839.3	12,842.3	3.08	Liner PUP Joint				
							4 1/2	11.60	P-110	12,842.3	12,927.9	85.58	Casing Joints				
							5.63			12,927.9	12,930.6	2.67	Frac Sleeve				
							4 1/2	11.60	P-110	12,930.6	13,012.0	81.42	Casing Joints				
							4 1/2	11.60	P-110	13,012.0	13,018.1	6.05	Liner PUP Joint				
							5 5/8			13,018.1	13,022.0	3.95	Packer				
							4 1/2	11.60	P-110	13,022.0	13,025.1	3.07	Liner PUP Joint				
							4 1/2	11.60	P-110	13,025.1	13,109.1	84.02	Casing Joints				
							5.63			13,109.1	13,111.8	2.67	Frac Sleeve				
							4 1/2	11.60	P-110	13,111.8	13,197.2	85.44	Casing Joints				
							4 1/2	11.60	P-110	13,197.2	13,203.3	6.06	Liner PUP Joint				
							5 5/8			13,203.3	13,207.2	3.95	Packer				
							4 1/2	11.60	P-110	13,207.2	13,210.3	3.10	Liner PUP Joint				
							4 1/2	11.60	P-110	13,210.3	13,295.7	85.33	Casing Joints				
							5.63			13,295.7	13,298.3	2.67	Frac Sleeve				
							4 1/2	11.60	P-110	13,298.3	13,384.7	86.42	Casing Joints				
							4 1/2	11.60	P-110	13,384.7	13,390.8	6.06	Liner PUP Joint				
							5 5/8			13,390.8	13,394.8	3.95	Packer				
							4 1/2	11.60	P-110	13,394.8	13,397.9	3.10	Liner PUP Joint				
							4 1/2	11.60	P-110	13,397.9	13,482.7	84.84	Casing Joints				
							5.63			13,482.7	13,485.4	2.67	Frac Sleeve				
							4 1/2	11.60	P-110	13,485.4	13,567.8	82.46	Casing Joints				
							4 1/2	11.60	P-110	13,567.8	13,573.9	6.09	Liner PUP Joint				
							5 5/8			13,573.9	13,577.9	3.95	Packer				
							4 1/2	11.60	P-110	13,577.9	13,580.9	3.07	Liner PUP Joint				
							4 1/2	11.60	P-110	13,580.9	13,667.4	86.44	Casing Joints				
							4 1/2	11.60	P-110	13,667.4	13,673.4	6.06	Liner PUP Joint				
							5.63			13,673.4	13,677.7	4.24	Hyd Frac Sleeve				
							4 1/2	11.60	P-110	13,677.7	13,680.8	3.12	Liner PUP Joint				
							4 1/2	11.60	P-110	13,680.8	13,722.4	41.61	Casing Joints				
							4 1/2	11.60	P-110	13,722.4	13,728.4	6.00	Liner PUP Joint				
							5 1/2			13,728.4	13,731.1	2.72	Toe Circulating Sub				
							5			13,731.1	13,732.1	0.96	Float Collar				
							4 1/2	11.60	P-110	13,732.1	13,738.1	6.06	Liner PUP Joint				
							5			13,738.1	13,739.1	0.94	Float Collar				
5 1/2			13,739.1	13,740.0	0.92	Guide Shoe											
Cement Stages																	
Des		Pump Start Date		Drill Out Date		Top (ftKB)		Btm (ftKB)		Top Meas Meth							
Conductor Cement		12/18/2014				17.0		97.0		Returns to Surface							
Surface Casing Cement		2/11/2015				17.0		1,860.0		Returns to Surface							
Intermediate Casing Cement		2/14/2015				17.0		6,271.0		Returns to Surface							
Perforations																	
Type of Hole			Date		Top (ftKB)		Btm (ftKB)		Zone								
Stimulations & Treatments																	
Sand Frac on 5/16/2015 11:24																	
Comment																	
Treatment End Date: 5/19/2015; Min Frac Gradient 0.772, Number of staged intervals: 35; Number of sleeves:35; Total Acid Used:0bbl; 184931 bbl Slickwater. First interval skipped.																	
Total Clean Volu...		Vol Slurry Tot (bbl)		Proppant Desig...		Proppant Frm (lb)		P Max (psi)		Avg Treat...		Avg Treat...		Max Tre...		Frac Gr...	
184930.00		189831.00		4,349,000.0		4,198,723.0		7,605.0		5,625.0		65.60		72.10			
Total Add Amount																	
Proppant 100 Mesh 75482 lb; Proppant Ottawa 30/50 4031385 lb; Proppant Ottawa 40/70 91856 lb																	
Stim/Treat Fluids																	
Fluid Name																	
Stim/Treat Stages																	
<Stage Type?> 1																	
Stg #		Start Date		Top (ftKB)		Btm (ftKB)		Vol Clean...		Vol Slurry...		Comment					
1		5/16/2015		13,673.0		13,678.0		0.00		0.00		SKIPPED					
Stim/Treat Additives																	
Stg #		Add			Type			Amount			Units		Sand Size				
1		Proppant			Ottawa 30/50			0.0			lb		30/50				
1		Proppant			Ottawa 40/70			0.0			lb		40/70				
<Stage Type?> 2																	
Stg #		Start Date		Top (ftKB)		Btm (ftKB)		Vol Clean...		Vol Slurry...		Comment					
2		5/16/2015		13,483.0		13,485.0		5594.00		5739.00		Slickwater:5594 bbl					



Lease Review All - Frac Summary

Well Name: RAZOR 11G-1409A

API Number 051233872800			WPC ID 1CO0761178			Well Permit Number			Field Name DJ Horizontal Niobrara			County Weld			State CO
Well Configuration Type Lateral/Horizontal					Orig KB Elv (ft) 4,989.70		Ground Elevation (ft) 4,972.70		Casing Flange Elevation (ft)		Tubing Head Elevation (ft)		Total Depth (ft)KB 13,760.0		
Original Spud Date 2/10/2015		Completion Date 5/19/2015		Asset Group Redtail			Responsible Engineer Charles Ohlson			N/S Dist (ft) 2,396.0		N/S Ref FNL	E/W Dist (ft) 1,783.0		E/W Ref FEL
Lot	Quarter 1 SW	Quarter 2 NE	Quarter 3	Quarter 4	Section 11	Section Suffix	Section Type	Township 10	Township N/S Dir N	Range 58	Range E/W Dir W	Meridian			

Lateral/Horizontal - Original Hole, 8/19/2015 3:16:05 PM					Stim/Treat Additives							
MD (ftKB)	D (ft K B)	n c l (	Vertical schematic (actual)	Logs	Stg #	Add		Type		Amount	Units	Sand Size
					2	Proppant		Ottawa 30/50		118,818.0	lb	30/50
					2 <th colspan="2">Proppant</th> <th colspan="2">Ottawa 40/70</th> <td>2,507.0</td> <td>lb</td> <td>40/70</td>	Proppant		Ottawa 40/70		2,507.0	lb	40/70
<Stage Type?> 3												
Stg #	Start Date	Top (ftKB)	Btm (ftKB)	Vol Clean...	Vol Slurry...	Comment						
3	5/17/2015	13,296.0	13,298.0	5737.00	5872.00	Slickwater:5737 bbl						
Stim/Treat Additives												
Stg #	Add		Type		Amount	Units	Sand Size					
3	Proppant		Ottawa 30/50		110,559.0	lb	30/50					
3	Proppant		Ottawa 40/70		2,464.0	lb	40/70					
<Stage Type?> 4												
Stg #	Start Date	Top (ftKB)	Btm (ftKB)	Vol Clean...	Vol Slurry...	Comment						
4	5/17/2015	13,109.0	13,112.0	4940.00	5037.00	Slickwater:4940 bbl						
Stim/Treat Additives												
Stg #	Add		Type		Amount	Units	Sand Size					
4	Proppant		Ottawa 30/50		79,271.0	lb	30/50					
4	Proppant		Ottawa 40/70		2,673.0	lb	40/70					
<Stage Type?> 5												
Stg #	Start Date	Top (ftKB)	Btm (ftKB)	Vol Clean...	Vol Slurry...	Comment						
5	5/17/2015	12,928.0	12,931.0	5561.00	5701.00	Slickwater:5561 bbl						
Stim/Treat Additives												
Stg #	Add		Type		Amount	Units	Sand Size					
5	Proppant		Ottawa 30/50		119,112.0	lb	30/50					
5	Proppant		Ottawa 40/70		2,613.0	lb	40/70					
<Stage Type?> 6												
Stg #	Start Date	Top (ftKB)	Btm (ftKB)	Vol Clean...	Vol Slurry...	Comment						
6	5/17/2015	12,741.0	12,744.0	5535.00	5684.00	Slickwater:5535 bbl						
Stim/Treat Additives												
Stg #	Add		Type		Amount	Units	Sand Size					
6	Proppant		Ottawa 30/50		125,961.0	lb	30/50					
6	Proppant		Ottawa 40/70		2,390.0	lb	40/70					
<Stage Type?> 7												
Stg #	Start Date	Top (ftKB)	Btm (ftKB)	Vol Clean...	Vol Slurry...	Comment						
7	5/17/2015	12,554.0	12,557.0	5413.00	5557.00	Slickwater:5413 bbl						
Stim/Treat Additives												
Stg #	Add		Type		Amount	Units	Sand Size					
7	Proppant		Ottawa 30/50		114,510.0	lb	30/50					
7	Proppant		Ottawa 40/70		2,186.0	lb	40/70					
<Stage Type?> 8												
Stg #	Start Date	Top (ftKB)	Btm (ftKB)	Vol Clean...	Vol Slurry...	Comment						
8	5/17/2015	12,377.0	12,380.0	5385.00	5529.00	Slickwater:5385 bbl						
Stim/Treat Additives												
Stg #	Add		Type		Amount	Units	Sand Size					
8	Proppant		Ottawa 30/50		125,145.0	lb	30/50					
8	Proppant		Ottawa 40/70		1,843.0	lb	40/70					
<Stage Type?> 9												
Stg #	Start Date	Top (ftKB)	Btm (ftKB)	Vol Clean...	Vol Slurry...	Comment						
9	5/17/2015	12,193.0	12,195.0	5386.00	5530.00	Slickwater:5386 bbl						
Stim/Treat Additives												
Stg #	Add		Type		Amount	Units	Sand Size					
9	Proppant		Ottawa 30/50		127,708.0	lb	30/50					
9	Proppant		Ottawa 40/70		2,500.0	lb	40/70					
<Stage Type?> 10												
Stg #	Start Date	Top (ftKB)	Btm (ftKB)	Vol Clean...	Vol Slurry...	Comment						
10	5/17/2015	12,006.0	12,009.0	5452.00	5597.00	Slickwater:5452 bbl						
Stim/Treat Additives												
Stg #	Add		Type		Amount	Units	Sand Size					
10	Proppant		Ottawa 30/50		129,475.0	lb	30/50					
10	Proppant		Ottawa 40/70		3,312.0	lb	40/70					
<Stage Type?> 11												
Stg #	Start Date	Top (ftKB)	Btm (ftKB)	Vol Clean...	Vol Slurry...	Comment						
11	5/17/2015	11,780.0	11,783.0	5363.00	5505.00	Slickwater:5363 bbl						
Stim/Treat Additives												
Stg #	Add		Type		Amount	Units	Sand Size					
11	Proppant		Ottawa 30/50		125,806.0	lb	30/50					
11	Proppant		Ottawa 40/70		2,895.0	lb	40/70					
<Stage Type?> 12												
Stg #	Start Date	Top (ftKB)	Btm (ftKB)	Vol Clean...	Vol Slurry...	Comment						
12	5/17/2015	11,549.0	11,551.0	5457.00	5602.00	Slickwater:5457 bbl						
Stim/Treat Additives												
Stg #	Add		Type		Amount	Units	Sand Size					
12	Proppant		Ottawa 30/50		123,405.0	lb	30/50					
12	Proppant		Ottawa 40/70		2,856.0	lb	40/70					
<Stage Type?> 13												
Stg #	Start Date	Top (ftKB)	Btm (ftKB)	Vol Clean...	Vol Slurry...	Comment						
13	5/17/2015	11,322.0	11,325.0	5377.00	5521.00	Slickwater:5377 bbl						
Stim/Treat Additives												
Stg #	Add		Type		Amount	Units	Sand Size					
13	Proppant		Ottawa 30/50		124,264.0	lb	30/50					
13	Proppant		Ottawa 40/70		2,900.0	lb	40/70					

Lease Review All - Frac Summary															
Well Name: RAZOR 11G-1409A															
API Number 051233872800			WPC ID 1CO0761178			Well Permit Number			Field Name DJ Horizontal Niobrara			County Weld		State CO	
Well Configuration Type Lateral/Horizontal				Orig KB Elv (ft) 4,989.70		Ground Elevation (ft) 4,972.70		Casing Flange Elevation (ft)		Tubing Head Elevation (ft)		Total Depth (ftKB) 13,760.0			
Original Spud Date 2/10/2015		Completion Date 5/19/2015		Asset Group Redtail			Responsible Engineer Charles Ohlson			N/S Dist (ft) 2,396.0		N/S Ref FNL	E/W Dist (ft) 1,783.0	E/W Ref FEL	
Lot		Quarter 1 SW	Quarter 2 NE	Quarter 3	Quarter 4	Section 11	Section Suffix	Section Type	Township 10	Township N/S Dir N	Range 58	Range E/W Dir W	Meridian		
Lateral/Horizontal - Original Hole, 8/19/2015 3:16:11 PM						Stim/Treat Stages									
Vertical schematic (actual)						<Stage Type?> 14									
						Stg #	Start Date	Top (ftKB)	Btm (ftKB)	Vol Clean...	Vol Slurry...	Comment			
MD (ftKB)	D (ft KB)	n c l (				14	5/17/2015	11,098.0	11,100.0	5416.00	5566.00	Slickwater:5416 bbl			
						Stim/Treat Additives									
						Stg #	Add		Type		Amount	Units	Sand Size		
48.6	48.6	41				14	Proppant		Ottawa 30/50		129,125.0	lb	30/50		
1,815.3	1,815.3	42				14	Proppant		Ottawa 40/70		3,091.0	lb	40/70		
						<Stage Type?> 15									
						Stg #	Start Date	Top (ftKB)	Btm (ftKB)	Vol Clean...	Vol Slurry...	Comment			
2,633.9	2,633.9	43				15	5/17/2015	10,874.0	10,876.0	5412.00	5562.00	Slickwater:5412 bbl			
						Stim/Treat Additives									
						Stg #	Add		Type		Amount	Units	Sand Size		
3,821.9	3,821.9	44				15	Proppant		Ottawa 30/50		120,748.0	lb	30/50		
5,201.1	5,201.1	45				15	Proppant		Ottawa 40/70		3,234.0	lb	40/70		
						<Stage Type?> 16									
						Stg #	Start Date	Top (ftKB)	Btm (ftKB)	Vol Clean...	Vol Slurry...	Comment			
5,795.9	5,795.9	46				16	5/17/2015	10,648.0	10,651.0	5374.00	5521.00	Slickwater:5374 bbl			
						Stim/Treat Additives									
						Stg #	Add		Type		Amount	Units	Sand Size		
5,836.9	5,836.9	47				16	Proppant		Ottawa 30/50		123,160.0	lb	30/50		
6,269.4	6,269.4	48				16	Proppant		Ottawa 40/70		3,495.0	lb	40/70		
						<Stage Type?> 17									
						Stg #	Start Date	Top (ftKB)	Btm (ftKB)	Vol Clean...	Vol Slurry...	Comment			
6,330.1	6,330.1	49				17	5/17/2015	10,423.0	10,426.0	5389.00	5538.00	Slickwater:5389 bbl			
						Stim/Treat Additives									
						Stg #	Add		Type		Amount	Units	Sand Size		
6,502.6	6,502.6	50				17	Proppant		Ottawa 30/50		126,056.0	lb	30/50		
6,605.0	6,605.0	51				17	Proppant		Ottawa 40/70		2,630.0	lb	40/70		
						<Stage Type?> 18									
						Stg #	Start Date	Top (ftKB)	Btm (ftKB)	Vol Clean...	Vol Slurry...	Comment			
6,828.7	6,828.7	52				18	5/17/2015	10,195.0	10,198.0	5415.00	5566.00	Slickwater:5415 bbl			
						Stim/Treat Additives									
						Stg #	Add		Type		Amount	Units	Sand Size		
7,053.8	7,053.8	53				18	Proppant		Ottawa 30/50		127,045.0	lb	30/50		
7,192.3	7,192.3	54				18	Proppant		Ottawa 40/70		2,713.0	lb	40/70		
						<Stage Type?> 19									
						Stg #	Start Date	Top (ftKB)	Btm (ftKB)	Vol Clean...	Vol Slurry...	Comment			
7,407.2	7,407.2	55				19	5/18/2015	9,971.0	9,973.0	5382.00	5530.00	Slickwater:5382 bbl			
						Stim/Treat Additives									
						Stg #	Add		Type		Amount	Units	Sand Size		
7,505.9	7,505.9	56				19	Proppant		Ottawa 30/50		123,471.0	lb	30/50		
7,732.9	7,732.9	57				19	Proppant		Ottawa 40/70		2,823.0	lb	40/70		
						<Stage Type?> 20									
						Stg #	Start Date	Top (ftKB)	Btm (ftKB)	Vol Clean...	Vol Slurry...	Comment			
7,831.0	7,831.0	58				20	5/18/2015	9,740.0	9,743.0	5394.00	5539.00	Slickwater:5394 bbl			
						Stim/Treat Additives									
						Stg #	Add		Type		Amount	Units	Sand Size		
8,050.2	8,050.2	59				20	Proppant		Ottawa 30/50		119,766.0	lb	30/50		
8,273.9	8,273.9	60				20	Proppant		Ottawa 40/70		3,024.0	lb	40/70		
						<Stage Type?> 21									
						Stg #	Start Date	Top (ftKB)	Btm (ftKB)	Vol Clean...	Vol Slurry...	Comment			
8,373.7	8,373.7	61				21	5/18/2015	9,510.0	9,513.0	5358.00	5504.00	Slickwater:5358 bbl			
						Stim/Treat Additives									
						Stg #	Add		Type		Amount	Units	Sand Size		
8,598.1	8,598.1	62				21	Proppant		Ottawa 30/50		119,626.0	lb	30/50		
8,743.4	8,743.4	63				21	Proppant		Ottawa 40/70		2,651.0	lb	40/70		
						<Stage Type?> 22									
						Stg #	Start Date	Top (ftKB)	Btm (ftKB)	Vol Clean...	Vol Slurry...	Comment			
8,961.6	8,961.6	64				22	5/18/2015	9,281.0	9,284.0	5520.00	5670.00	Slickwater:5520 bbl			
						Stim/Treat Additives									
						Stg #	Add		Type		Amount	Units	Sand Size		
9,057.4	9,057.4	65				22	Proppant		Ottawa 30/50		121,619.0	lb	30/50		
9,281.2	9,281.2	66				22	Proppant		Ottawa 40/70		2,500.0	lb	40/70		
						<Stage Type?> 23									
						Stg #	Start Date	Top (ftKB)	Btm (ftKB)	Vol Clean...	Vol Slurry...	Comment			
9,425.5	9,425.5	67				23	5/18/2015	9,055.0	9,057.0	5341.00	5484.00	Slickwater:5341 bbl			
						Stim/Treat Additives									
						Stg #	Add		Type		Amount	Units	Sand Size		
9,647.0	9,647.0	68				23	Proppant		Ottawa 30/50		119,867.0	lb	30/50		
9,877.3	9,877.3	69				23	Proppant		Ottawa 40/70		2,654.0	lb	40/70		
						<Stage Type?> 24									
						Stg #	Start Date	Top (ftKB)	Btm (ftKB)	Vol Clean...	Vol Slurry...	Comment			
10,097.1	10,097.1	70				24	5/18/2015	8,829.0	8,831.0	5342.00	5488.00	Slickwater:5342 bbl			
						Stim/Treat Additives									
						Stg #	Add		Type		Amount	Units	Sand Size		
10,198.2	10,198.2	71				24	Proppant		Ottawa 30/50		121,659.0	lb	30/50		
10,423.2	10,423.2	72				24	Proppant		Ottawa 40/70		2,319.0	lb	40/70		
						<Stage Type?> 25									
						Stg #	Start Date	Top (ftKB)	Btm (ftKB)	Vol Clean...	Vol Slurry...	Comment			
10,548.9	10,548.9	73				25	5/18/2015	8,598.0	8,601.0	5329.00	5474.00	Slickwater:5329 bbl			
11,006.6	11,006.6	74													
11,225.7	11,225.7	75													
11,324.8	11,324.8	76													
11,548.9	11,548.9	77													
11,693.9	11,693.9	78													
11,917.7	11,917.7	79													
12,009.2	12,009.2	80													
12,194.9	12,194.9	81													
12,377.0	12,377.0	82													
12,471.5	12,471.5	83													
12,652.2	12,652.2	84													
12,835.3	12,835.3	85													
12,931.1	12,931.1	86													
13,109.3	13,109.3	87													
13,295.6	13,295.6	88													
13,394.7	13,394.7	89													
13,567.9	13,567.9	90													
13,673.6	13,673.6	91													
13,731.0	13,731.0	92													





Lease Review All - Frac Summary

Well Name: RAZOR 11G-1409A

API Number 051233872800				WPC ID 1CO0761178				Well Permit Number				Field Name DJ Horizontal Niobrara				County Weld		State CO			
Well Configuration Type Lateral/Horizontal						Orig KB Elv (ft) 4,989.70		Ground Elevation (ft) 4,972.70		Casing Flange Elevation (ft)				Tubing Head Elevation (ft)		Total Depth (ftKB) 13,760.0					
Original Spud Date 2/10/2015				Completion Date 5/19/2015		Asset Group Redtail				Responsible Engineer Charles Ohlson				N/S Dist (ft) 2,396.0		N/S Ref FNL		E/W Dist (ft) 1,783.0		E/W Ref FEL	
Lot		Quarter 1 SW	Quarter 2 NE	Quarter 3	Quarter 4	Section 11		Section Suffix	Section Type		Township 10		Township N/S Dir N	Range 58		Range E/W Dir W		Meridian			
Lateral/Horizontal - Original Hole, 8/19/2015 3:16:16 PM										Stim/Treat Additives											
MD (ftKB)	D (ft K B)	n ( K B)	c ( K B)	l ( K B)	Vertical schematic (actual)	Logs	Stg #		Add		Type		Amount		Units		Sand Size				
							25		Proppant		Ottawa 30/50		118,407.0		lb		30/50				
							25		Proppant		Ottawa 40/70		2,099.0		lb		40/70				
<Stage Type?> 26																					
Stg #		Start Date		Top (ftKB)		Btm (ftKB)		Vol Clean...		Vol Slurry...		Comment									
26		5/18/2015		8,371.0		8,374.0		5391.00		5536.00		Slickwater:5391 bbl									
Stim/Treat Additives																					
Stg #				Add				Type				Amount		Units		Sand Size					
26				Proppant				Ottawa 30/50				121,338.0		lb		30/50					
26				Proppant				Ottawa 40/70				2,208.0		lb		40/70					
<Stage Type?> 27																					
Stg #		Start Date		Top (ftKB)		Btm (ftKB)		Vol Clean...		Vol Slurry...		Comment									
27		5/18/2015		8,143.0		8,146.0		5293.00		5434.00		Slickwater:5293 bbl									
Stim/Treat Additives																					
Stg #				Add				Type				Amount		Units		Sand Size					
27				Proppant				Ottawa 30/50				113,594.0		lb		30/50					
27				Proppant				Ottawa 40/70				2,130.0		lb		40/70					
<Stage Type?> 28																					
Stg #		Start Date		Top (ftKB)		Btm (ftKB)		Vol Clean...		Vol Slurry...		Comment									
28		5/18/2015		7,920.0		7,923.0		5314.00		5456.00		Slickwater:5314 bbl									
Stim/Treat Additives																					
Stg #				Add				Type				Amount		Units		Sand Size					
28				Proppant				Ottawa 30/50				114,590.0		lb		30/50					
28				Proppant				Ottawa 40/70				2,402.0		lb		40/70					
<Stage Type?> 29																					
Stg #		Start Date		Top (ftKB)		Btm (ftKB)		Vol Clean...		Vol Slurry...		Comment									
29		5/18/2015		7,733.0		7,736.0		5275.00		5418.00		Slickwater:5275 bbl									
Stim/Treat Additives																					
Stg #				Add				Type				Amount		Units		Sand Size					
29				Proppant				Ottawa 30/50				115,534.0		lb		30/50					
29				Proppant				Ottawa 40/70				2,472.0		lb		40/70					
<Stage Type?> 30																					
Stg #		Start Date		Top (ftKB)		Btm (ftKB)		Vol Clean...		Vol Slurry...		Comment									
30		5/18/2015		7,504.0		7,506.0		5323.00		5442.00		Slickwater:5323 bbl									
Stim/Treat Additives																					
Stg #				Add				Type				Amount		Units		Sand Size					
30				Proppant				Ottawa 30/50				100,925.0		lb		30/50					
30				Proppant				Ottawa 40/70				2,807.0		lb		40/70					
<Stage Type?> 31																					
Stg #		Start Date		Top (ftKB)		Btm (ftKB)		Vol Clean...		Vol Slurry...		Comment									
31		5/19/2015		7,279.0		7,282.0		5285.00		5436.00		Slickwater:5285 bbl									
Stim/Treat Additives																					
Stg #				Add				Type				Amount		Units		Sand Size					
31				Proppant				Ottawa 30/50				127,020.0		lb		30/50					
31				Proppant				Ottawa 40/70				3,130.0		lb		40/70					
<Stage Type?> 32																					
Stg #		Start Date		Top (ftKB)		Btm (ftKB)		Vol Clean...		Vol Slurry...		Comment									
32		5/19/2015		7,054.0		7,057.0		5252.00		5404.00		Slickwater:5252 bbl									
Stim/Treat Additives																					
Stg #				Add				Type				Amount		Units		Sand Size					
32				Proppant				Ottawa 30/50				129,369.0		lb		30/50					
32				Proppant				Ottawa 40/70				2,917.0		lb		40/70					
<Stage Type?> 33																					
Stg #		Start Date		Top (ftKB)		Btm (ftKB)		Vol Clean...		Vol Slurry...		Comment									
33		5/19/2015		6,826.0		6,829.0		6498.00		6652.00		Slickwater:6498 bbl									
Stim/Treat Additives																					
Stg #				Add				Type				Amount		Units		Sand Size					
33				Proppant				Ottawa 30/50				129,238.0		lb		30/50					
33				Proppant				Ottawa 40/70				2,972.0		lb		40/70					
<Stage Type?> 34																					
Stg #		Start Date		Top (ftKB)		Btm (ftKB)		Vol Clean...		Vol Slurry...		Comment									
34		5/19/2015		6,602.0		6,605.0		5300.00		5448.00		Slickwater:5300 bbl									
Stim/Treat Additives																					
Stg #				Add				Type				Amount		Units		Sand Size					
34				Proppant				Ottawa 30/50				116,110.0		lb		30/50					
34				Proppant				Ottawa 40/70				3,029.0		lb		40/70					
<Stage Type?> 35																					
Stg #		Start Date		Top (ftKB)		Btm (ftKB)		Vol Clean...		Vol Slurry...		Comment									
35		5/19/2015		6,419.0		6,421.0		6127.00		6289.00		Slickwater:6127 bbl									
Stim/Treat Additives																					
Stg #				Add				Type				Amount		Units		Sand Size					
35				Proppant				100 Mesh				75,482.0		lb		100 Mesh					
35				Proppant				Ottawa 30/50				69,084.0		lb		30/50					
35				Proppant				Ottawa 40/70				3,417.0		lb		40/70					
Tubing - Production set at 5,846.5ftKB on 6/7/2015 06:00																					
Set Depth (ftKB)				Comment								Run Date				Pull Date					
5,846.5												6/7/2015									
Item Des								OD (in)		ID (in)		Len (ft)		Top (ftKB)		Btm (ftKB)					
Tubing Hanger								7 1/16		1.995		0.50		17.1		17.6					
Tubing								2 3/8		1.995		30.94		17.6		48.5					
Tubing Sub 7ft 9.97ft 10ft								2 3/8		1.995		26.97		48.5		75.5					



Lease Review All - Frac Summary

Well Name: RAZOR 11G-1409A

API Number 051233872800				WPC ID 1CO0761178				Well Permit Number				Field Name DJ Horizontal Niobrara				County Weld		State CO																										
Well Configuration Type Lateral/Horizontal						Orig KB Elv (ft) 4,989.70				Ground Elevation (ft) 4,972.70				Casing Flange Elevation (ft)				Tubing Head Elevation (ft)		Total Depth (ftKB) 13,760.0																								
Original Spud Date 2/10/2015				Completion Date 5/19/2015				Asset Group Redtail				Responsible Engineer Charles Ohlson				N/S Dist (ft) 2,396.0		N/S Ref FNL		E/W Dist (ft) 1,783.0		E/W Ref FEL																						
Lot		Quarter 1 SW		Quarter 2 NE		Quarter 3		Quarter 4		Section 11		Section Suffix		Section Type		Township 10 N		Township N/S Dir		Range 58 W		Range E/W Dir		Meridian																				
Lateral/Horizontal - Original Hole, 8/19/2015 3:16:22 PM										Item Des				OD (in)		ID (in)		Len (ft)		Top (ftKB)		Btm (ftKB)																						
MD (ftKB)	D (ft K B)	n c l (	<div>Vertical schematic (actual)</div>								<div>Logs</div>								Tubing				2 3/8		1.995		1,561.95		75.5		1,637.5													
																			Gas Lift Mandrel				2 3/8		1.995		4.05		1,637.5		1,641.5													
																			Tubing				2 3/8		1.995		992.38		1,641.5		2,633.9													
																			Gas Lift Mandrel				2 3/8		1.995		4.05		2,633.9		2,637.9													
																			Tubing				2 3/8		1.995		558.22		2,637.9		3,196.2													
																			Gas Lift Mandrel				2 3/8		1.995		4.04		3,196.2		3,200.2													
																			Tubing				2 3/8		1.995		498.34		3,200.2		3,698.5													
																			Gas Lift Mandrel				2 3/8		1.995		4.04		3,698.5		3,702.6													
																			Tubing				2 3/8		1.995		494.59		3,702.6		4,197.2													
																			Gas Lift Mandrel				2 3/8		1.995		4.05		4,197.2		4,201.2													
																			Tubing				2 3/8		1.995		496.00		4,201.2		4,697.2													
																			Gas Lift Mandrel				2 3/8		1.995		4.04		4,697.2		4,701.3													
																			Tubing				2 3/8		1.995		495.66		4,701.3		5,196.9													
																			Gas Lift Mandrel				2 3/8		1.995		4.05		5,196.9		5,201.0													
																			Tubing				2 3/8		1.995		589.74		5,201.0		5,790.7													
																			Gas Lift Mandrel				2 3/8		1.995		5.25		5,790.7		5,796.0													
																			Profile Nipple				2 3/8		1.870		1.20		5,796.0		5,797.2													
																			Tubing				2 3/8		1.995		30.85		5,797.2		5,828.0													
																			On-Off Tool				3 3/4		1.870		1.35		5,828.0		5,829.4													
																			Packer				3 3/4		1.950		7.56		5,829.4		5,836.9													
																			Burst Disc				2.62		1.500		0.80		5,836.9		5,837.7													
																			Perforated Sub				2 3/8		1.995		8.08		5,837.7		5,845.8													
																			Bull Plug				2.61				0.66		5,845.8		5,846.5													
																			Rod Strings																									
																			<des> on <dtmrun>																									
																			Rod Description													Run Date						Pull Date						
																			Item Des													OD (in)			Len (ft)			Top (ftKB)			Btm (ftKB)			
																			Other Strings																									
																			Set Depth (ftKB)				Comment													Run Date				Pull Date				
																			Item Des				OD (in)				Len (ft)				Top (ftKB)				Btm (ftKB)									
																			Other In Hole																									
																			Des				OD (in)				Run Date				Pull Date				Top (ftKB)				Btm (ftKB)					
																			Bottom Hole Cores																									
																			Date				Core #				Top (ftKB)				Btm (ftKB)				Recov (ft)									