



410 17th Street, Suite 1500
Denver, CO 80202
(720) 440-6100 phone
(720) 305-0804 fax

Bonanzacrk.com

03 August 2015

Colorado Oil and Gas Conservation
Commission
The Chancery Building
1120 Lincoln Street, Suite 801
Denver, CO 80203

Attn: Mr. Matt Lepore, Director

Re: Notice of 318A.a.(4)D. Horizontal Wellbore Spacing Unit Proposal
North Platte Y-U-13HC
SHL: SESE (659' FSL, 481' FEL) Sec 13-5N-63W, 6TH PM
Top of Production: SESE (631' FSL, 10' FEL) Sec 13-5N-63W, 6TH PM
Bottom of Production: NENE (470' FNL, 10' FEL) Sec 13-5N-63W, 6TH PM
Weld County, Colorado

Mr. Lepore:

Bonanza Creek Energy, Inc. (Bonanza) intends to permit, drill and operate the referenced Codell Fm. Horizontal Well. As defined by Colorado Oil and Gas Conservation Commission (COGCC) Rule 318A.a.(4)D., Bonanza proposes the following wellbore spacing unit:

E/2E/2 Sec.13-T5N-R63W & W/2W/2 Sec.18-T5N-R62W, Weld County, CO. – 320 Acres.

A map depicting the proposed wellbore spacing unit is attached, for your reference. Bonanza has notified the other owners in the unit and no objections were received. Copies of the notifications are maintained in Bonanza's files.

Bonanza respectfully requests that you review the enclosed wellbore spacing unit documentation and approve the referenced APD.

Please do not hesitate to call or email me, directly, at (720) 440-6112 or kcaplan@bonanzacrk.com, should you have any questions pertaining to this matter.

Thank you for your cooperation.

Sincerely,
BONANZA CREEK ENERGY OPERATING COMPANY, LLC

A handwritten signature in blue ink that reads 'Keith S. Caplan'.

Keith S. Caplan
Sr. Regulatory Specialist

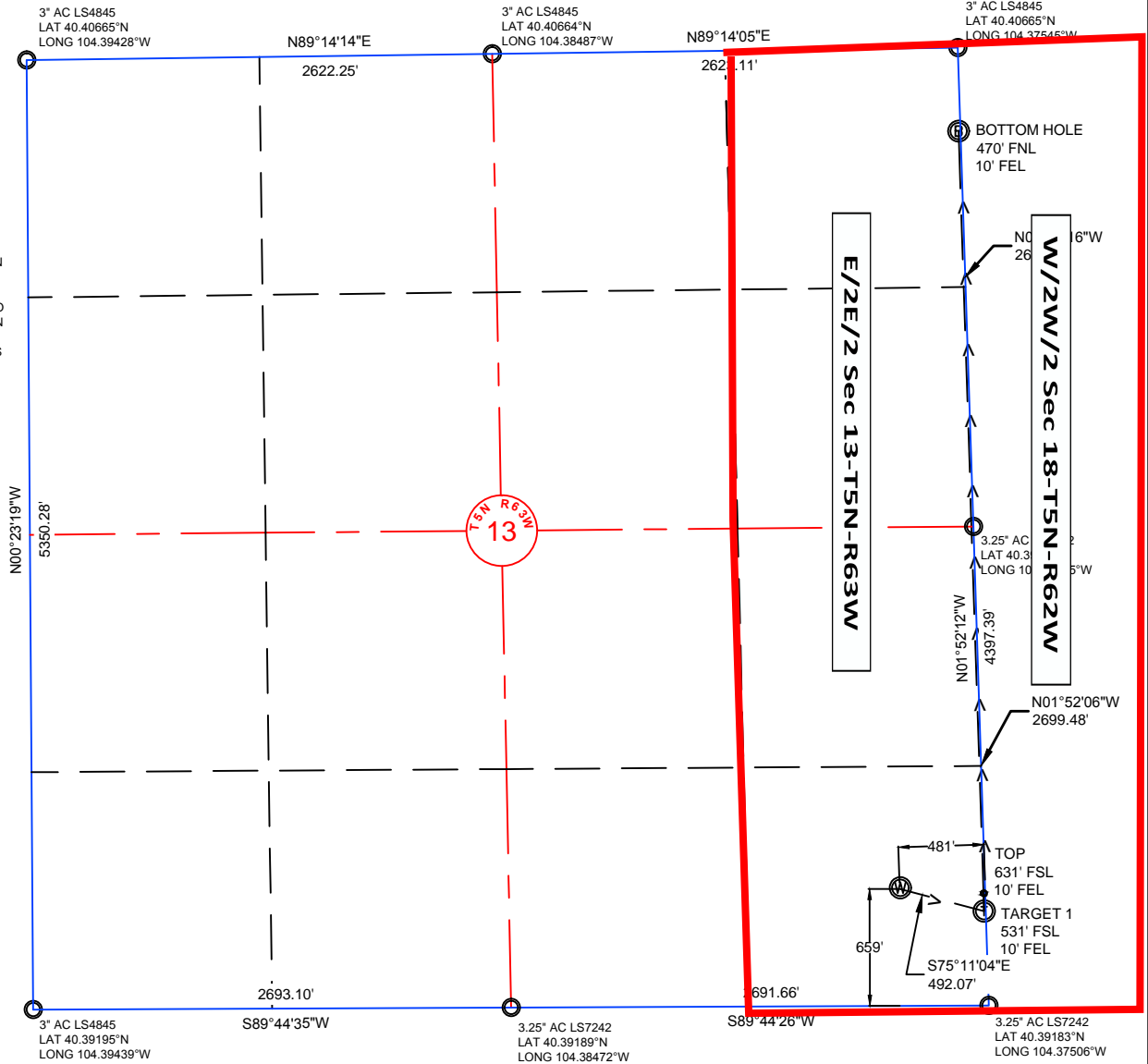
CORPORATE OFFICE

410 17th Street, Suite 1400
Denver, CO 80202
Office: (720)440-6100

MAGNOLIA OFFICE

50 Columbia 300
Magnolia, AR 71753
Office: (870) 235-0400

NOTE: UNDER COLORADO LAW, YOU MUST COMMENCE ANY LEGAL ACTION BASED ON ANY DEFECT IN THIS CERTIFICATE WITHIN THREE YEARS AFTER DEFECT IS DISCOVERED. IN NO EVENT MAY ANY ACTION BASED UPON ANY DEFECT IN THIS SURVEY BE COMMENCED MORE THAN TEN YEARS AFTER DATE OF THIS CERTIFICATE SHOWN HEREON. (13-80105 C.R.S.)

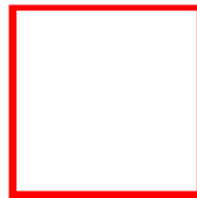


NOTES:

- ALL BEARINGS ARE GRID BASED UPON THE COLORADO STATE PLANE COORDINATE SYSTEM, NORTH ZONE, NAD83(2011) DERIVED FROM POST-PROCESSED STATIC GPS OBSERVATIONS.
- DISTANCES ARE ON GRID
- VERTICAL DATUM IS NAVD88 BASED UPON GPS OBSERVATIONS
- PDOP VALUE EQUALS 1.3.
- GPS OPERATOR: JOHN STODDARD.
- UNDISTURBED GROUND ELEVATION AT WELLHEAD = 4596.8'
- ALL SECTION LENGTHS ARE MEASURED DISTANCES UNLESS NOTED BY (R), RECORD BEARING AND DISTANCE.
- NEAREST CULTURAL DISTANCES

CERTIFICATE OF SURVEYOR:

I, DAVID A. FEHRINGER OF LANDER, WYOMING HEREBY CERTIFY THAT THIS WELL LOCATION CERTIFICATE WAS PREPARED FROM NOTES TAKEN DURING AN ACTUAL SURVEY ON DECEMBER 17, 2014; AND THAT IT CORRECTLY SHOWS THE DRILLING LOCATION OF BONANZA CREEK ENERGY, INC., NORTH PLATTE Y-U-13HC AS STAKED DURING SAID SURVEY. THIS MAP DOES NOT REPRESENT A BOUNDARY SURVEY OR AN IMPROVEMENT LOCATION PLAT AND SHOULD NOT BE USED FOR THE ESTABLISHMENT OF BOUNDARY



Wellbore Spacing Unit Outline



Wellbore Spacing Unit Map
14 July 2015 KK

NORTH PLATTE Y-U-13HC
E/2E/2 Sec.13-T5N-R63W
W/2W/2 Sec.18-T5N-R62W
Weld County, Colorado