



410 17th Street, Suite 1500  
Denver, CO 80202  
(720) 440-6100 phone  
(720) 305-0804 fax

[Bonanzacrk.com](http://Bonanzacrk.com)

03 August 2015

Colorado Oil and Gas Conservation  
Commission  
The Chancery Building  
1120 Lincoln Street, Suite 801  
Denver, CO 80203

Attn: Mr. Matt Lepore, Director

Re: Notice of 318A.a.(4)D. Horizontal Wellbore Spacing Unit Proposal  
North Platte Y44-U41-13HNB  
SHL: SESE (679' FSL, 480' FEL) Sec 13-5N-63W, 6<sup>TH</sup> PM  
Top of Production: SESE (631' FSL, 388' FEL) Sec 13-5N-63W, 6<sup>TH</sup> PM  
Bottom of Production: NENE (470' FNL, 380' FEL) Sec 13-5N-63W, 6<sup>TH</sup> PM  
Weld County, Colorado

Mr. Lepore:

Bonanza Creek Energy, Inc. (Bonanza) intends to permit, drill and operate the referenced Niobrara Fm. Horizontal Well. As defined by Colorado Oil and Gas Conservation Commission (COGCC) Rule 318A.a.(4)D., Bonanza proposes the following wellbore spacing unit:

E/2E/2 Sec.13-T5N-R63W & W/2W/2 Sec.18-T5N-R62W, Weld County, CO. – 320 Acres.

A map depicting the proposed wellbore spacing unit is attached, for your reference. Bonanza has notified the other owners in the unit and no objections were received. Copies of the notifications are maintained in Bonanza's files.

Bonanza respectfully requests that you review the enclosed wellbore spacing unit documentation and approve the referenced APD.

Please do not hesitate to call or email me, directly, at (720) 440-6112 or [kcaplan@bonanzacrk.com](mailto:kcaplan@bonanzacrk.com), should you have any questions pertaining to this matter.

Thank you for your cooperation.

Sincerely,  
BONANZA CREEK ENERGY OPERATING COMPANY, LLC

Keith S. Caplan  
Sr. Regulatory Specialist

---

CORPORATE OFFICE

410 17<sup>th</sup> Street, Suite 1400

Denver, CO 80202

Office: (720)440-6100

---

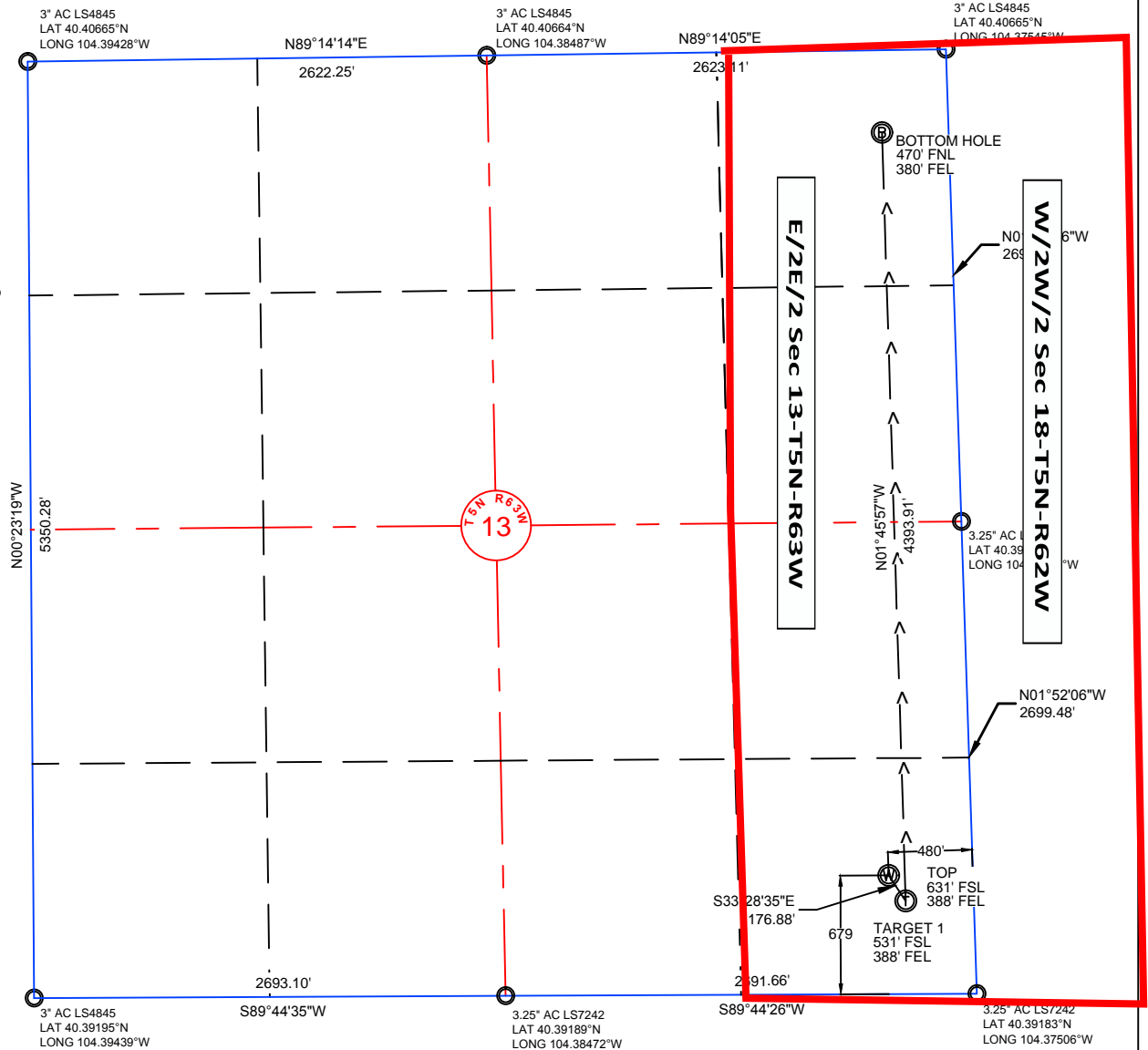
MAGNOLIA OFFICE

50 Columbia 300

Magnolia, AR 71753

Office: (870) 235-0400

NOTE: UNDER COLORADO LAW, YOU MUST COMMENCE ANY LEGAL ACTION BASED ON ANY DEFECT IN THIS CERTIFICATE WITHIN THREE YEARS AFTER DEFECT IS DISCOVERED. IN NO EVENT MAY ANY ACTION BASED UPON ANY DEFECT IN THIS SURVEY BE COMMENCED MORE THAN TEN YEARS AFTER DATE OF THIS CERTIFICATE SHOWN HEREON. (13-80105 C.R.S.)

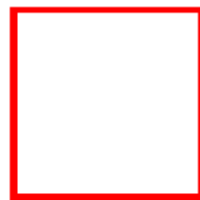


#### NOTES:

- ALL BEARINGS ARE GRID BASED UPON THE COLORADO STATE PLANE COORDINATE SYSTEM, NORTH ZONE, NAD83(2011) DERIVED FROM POST-PROCESSED STATIC GPS OBSERVATIONS.
- DISTANCES ARE ON GRID
- VERTICAL DATUM IS NAVD88 BASED UPON GPS OBSERVATIONS
- PDOP VALUE EQUALS 1.3.
- GPS OPERATOR: JOHN STODDARD.
- UNDISTURBED GROUND ELEVATION AT WELLHEAD = 4596.8'
- ALL SECTION LENGTHS ARE MEASURED DISTANCES UNLESS NOTED BY (R), RECORD BEARING AND DISTANCE.
- NEAREST CULTURAL DISTANCES

#### CERTIFICATE OF SURVEYOR:

I, DAVID A. FEHRINGER OF LANDER, WYOMING HEREBY CERTIFY THAT THIS WELL LOCATION CERTIFICATE WAS PREPARED FROM NOTES TAKEN DURING AN ACTUAL SURVEY ON DECEMBER 17, 2014; AND THAT IT CORRECTLY SHOWS THE DRILLING LOCATION OF BONANZA CREEK ENERGY, INC., NORTH PLATTE Y44-U41-13HNB AS STAKED DURING SAID SURVEY. THIS MAP DOES NOT REPRESENT A BOUNDARY SURVEY OR AN IMPROVEMENT LOCATION PLAT AND SHOULD NOT BE USED FOR THE ESTABLISHMENT OF BOUNDARY LINES.



Wellbore Spacing Unit Outline



## Wellbore Spacing Unit Map

14 July 2015 KK

**NORTH PLATTE Y44-U41-13HNB**  
E/2E/2 Sec.13-T5N-R63W  
W/2W/2 Sec.18-T5N-R62W  
Weld County, Colorado