

Caerus Oil and Gas LLC - EBUS

Puckett 12C-1

H&P 330

Post Job Summary

Cement Surface Casing

Date Prepared: 7/05/2015
Job Date: 6/25/2015

Submitted by: Patrick Ealey – Grand Junction Cement Engineer

The Road to Excellence Starts with Safety

| | | | |
|--|-----------------------|----------------------------------|----------------------------|
| Sold To #: 360446 | Ship To #: 3623424 | Quote #: | Sales Order #: 0902518640 |
| Customer: CAERUS OIL AND GAS LLC - EBUS | | Customer Rep: GEORGE URBAN | |
| Well Name: PUCKETT | | Well #: 12C-1 | API/UWI #: 05-045-22620-00 |
| Field: WILDCAT | City (SAP): PARACHUTE | County/Parish: GARFIELD | State: COLORADO |
| Legal Description: 2-7S-97W-2207FNL-635FEL | | | |
| Contractor: H & P DRLG | | Rig/Platform Name/Num: H & P 330 | |
| Job BOM: 7521 | | | |
| Well Type: DIRECTIONAL GAS | | | |
| Sales Person: HALAMERICA\HB80977 | | Srvc Supervisor: Jesse Slaughter | |

Job

| | |
|------------------------|-----------------------|
| Formation Name | |
| Formation Depth (MD) | Top |
| Form Type | BHST |
| Job depth MD | 2508ft |
| Water Depth | Wk Ht Above Floor 5ft |
| Perforation Depth (MD) | From To |

Well Data

| Description | New / Used | Size in | ID in | Weight lbm/ft | Thread | Grade | Top MD ft | Bottom MD ft | Top TVD ft | Bottom TVD ft |
|-------------------|------------|---------|-------|---------------|--------|-------|-----------|--------------|------------|---------------|
| Open Hole Section | | | 14.75 | | | | 0 | 2508 | | |
| Casing | | 9.625 | 8.921 | 36 | | | 0 | 2508 | | |

Tools and Accessories

| Type | Size in | Qty | Make | Depth ft | Type | Size in | Qty | Make |
|--------------|---------|-----|------|----------|----------------|---------|-----|------|
| Guide Shoe | 9.625 | 1 | | 2508 | Top Plug | 9.625 | 1 | HES |
| Float Shoe | 9.625 | 1 | | | Bottom Plug | 9.625 | | HES |
| Float Collar | 9.625 | 1 | | | SSR plug set | 9.625 | | HES |
| Insert Float | 9.625 | 1 | | | Plug Container | 9.625 | 1 | HES |
| Stage Tool | 9.625 | 1 | | | Centralizers | 9.625 | | HES |

Miscellaneous Materials

| | | | | | | |
|---------------|------|------------|------|-----------|------|------|
| Gelling Agt | Conc | Surfactant | Conc | Acid Type | Qty | Conc |
| Treatment Fld | Conc | Inhibitor | Conc | Sand Type | Size | Qty |

Fluid Data

Stage/Plug #: 1

| Fluid # | Stage Type | Fluid Name | Qty | Qty UoM | Mixing Density lbm/gal | Yield ft3/sack | Mix Fluid Gal | Rate bbl/min | Total Mix Fluid Gal |
|---------|-------------|-------------|-----|---------|------------------------|----------------|---------------|--------------|---------------------|
| 1 | Fresh Water | Fresh Water | 10 | bbl | 8.34 | | | 4 | |

| Fluid # | Stage Type | Fluid Name | Qty | Qty UoM | Mixing Density lbm/gal | Yield ft3/sack | Mix Fluid Gal | Rate bbl/min | Total Mix Fluid Gal |
|---------|-----------------|-----------------|-----|---------|------------------------|----------------|---------------|--------------|---------------------|
| 2 | Super Flush 101 | Super Flush 101 | 20 | bbl | 9.17 | | | 4 | |

| 21 gal/bbl | | FRESH WATER | | | | | | | |
|---------------------|--------------|----------------------|---------|---------|---------------------------|-------------------|------------------|-----------------|---------------------------|
| | | | | | | | | | |
| Fluid # | Stage Type | Fluid Name | Qty | Qty UoM | Mixing Density lbm/gal | Yield ft3/sack | Mix Fluid Gal | Rate bbl/min | Total Mix Fluid Gal |
| 3 | Fresh Water | Fresh Water | 10 | bbl | 8.34 | | | 4 | |
| | | | | | | | | | |
| Fluid # | Stage Type | Fluid Name | Qty | Qty UoM | Mixing Density lbm/gal | Yield ft3/sack | Mix Fluid Gal | Rate bbl/min | Total Mix Fluid Gal |
| 4 | VariCem GJ5 | VARICEM (TM) CEMENT | 375 | sack | 11 | 3.65 | | 6 | 23.08 |
| 23.08 Gal | | FRESH WATER | | | | | | | |
| | | | | | | | | | |
| Fluid # | Stage Type | Fluid Name | Qty | Qty UoM | Mixing Density lbm/gal | Yield ft3/sack | Mix Fluid Gal | Rate bbl/min | Total Mix Fluid Gal |
| 5 | VariCem GJ5 | VARICEM (TM) CEMENT | 160 | sack | 12.8 | 2.18 | | 6 | 12.11 |
| 12.11 Gal | | FRESH WATER | | | | | | | |
| | | | | | | | | | |
| Fluid # | Stage Type | Fluid Name | Qty | Qty UoM | Mixing Density lbm/gal | Yield ft3/sack | Mix Fluid Gal | Rate bbl/min | Total Mix Fluid Gal |
| 6 | Displacement | Displacement | 190.7 | bbl | 8.34 | | | 8 | |
| | | | | | | | | | |
| Fluid # | Stage Type | Fluid Name | Qty | Qty UoM | Mixing Density lbm/gal | Yield ft3/sack | Mix Fluid Gal | Rate bbl/min | Total Mix Fluid Gal |
| 7 | ReverCem | REVERCEM (TM) CEMENT | 300 | sack | 12.8 | 2.12 | | 2 | 11.15 |
| 11.15 Gal | | FRESH WATER | | | | | | | |
| | | | | | | | | | |
| Cement Left In Pipe | | Amount | 40.93ft | | Reason | | Shoe Joint | | |
| Comment | | | | | | | | | |

1.0 Real-Time Job Summary

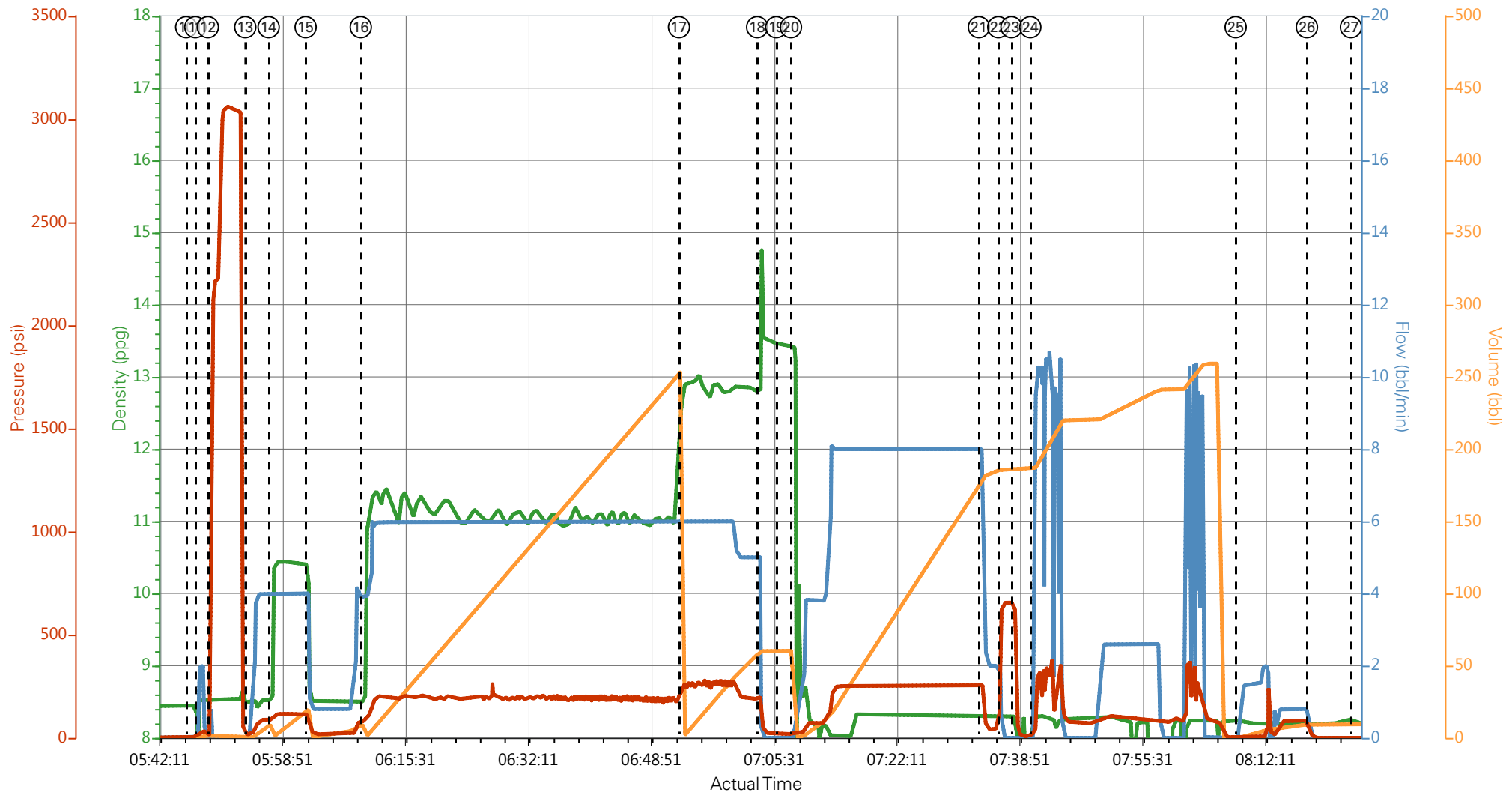
1.1 Job Event Log

| Type | Seq. No. | Activity | Date | Time | Source | DH Density (ppg) | Comb Pump Rate (bbl/min) | PS Pump Press (psi) | Pump Stg Tot (bbl) | Driv-Side Pump Pressure (psi) | Comments |
|-------|----------|---------------------------------------|-----------|----------|--------|---------------------|-----------------------------|------------------------|-----------------------|----------------------------------|--|
| Event | 1 | Call Out | 6/24/2015 | 21:00:00 | USER | | | | | | |
| Event | 2 | Pre-Convoy Safety Meeting | 6/24/2015 | 23:50:00 | USER | | | | | | WITH ALL HES PERSONNEL |
| Event | 3 | Crew Leave Yard | 6/25/2015 | 00:00:00 | USER | | | | | | |
| Event | 4 | Arrive At Loc | 6/25/2015 | 03:00:00 | USER | | | | | | RIG WAS RUNNING CASING UPON HES ARRIVAL |
| Event | 5 | Assessment Of Location Safety Meeting | 6/25/2015 | 03:10:00 | USER | | | | | | WITH ALL HES PERSONNEL |
| Event | 6 | Other | 6/25/2015 | 03:13:05 | USER | | | | | | |
| Event | 7 | Pre-Rig Up Safety Meeting | 6/25/2015 | 03:13:17 | USER | | | | | | WITH ALL HES PERSONNEL |
| Event | 8 | Rig-Up Equipment | 6/25/2015 | 03:13:26 | USER | | | | | | 1 PUMP, 2 BULK TRUCKS, 1 SILO |
| Event | 9 | Pre-Job Safety Meeting | 6/25/2015 | 03:13:32 | USER | | | | | | WITH ALL PERSONNEL |
| Event | 10 | Start Job | 6/25/2015 | 05:46:12 | COM7 | | | | | | TD 2526 FT, TP 2508 FT, SHOE 40.93 FT, CSG 9 5/8 IN 36 LB/FT, HOLE 14 3/4 IN, MUD WT 8.9 PPG |
| Event | 11 | Prime Pumps | 6/25/2015 | 05:47:26 | USER | 8.33 | 2.0 | 41.0 | 2.0 | | FRESH WATER |
| Event | 12 | Test Lines | 6/25/2015 | 05:49:08 | COM7 | | | | | | TESTED LINES TO 3054 PSI PRESSURE HOLDING |
| Event | 13 | Pump Spacer 1 | 6/25/2015 | 05:54:12 | COM7 | 8.33 | 4.0 | 91.0 | 10.0 | | FRESH WATER |
| Event | 14 | Pump Spacer 2 | 6/25/2015 | 05:57:22 | COM7 | 10.0 | 4.0 | 118.0 | 20.0 | | SUPER FLUSH 101 |
| Event | 15 | Pump Spacer 1 | 6/25/2015 | 06:02:23 | COM7 | 8.33 | 4.0 | 111.0 | 10.0 | | FRESH WATER |

| | | | | | | | | | | |
|-------|----|-------------------|-----------|----------|------|-------|-----|-------|-------|--|
| Event | 16 | Pump Lead Cement | 6/25/2015 | 06:09:52 | COM7 | 11.0 | 6.0 | 211.0 | 243.8 | 375 SKS AT 11.0 PPG, 3.65 FT3/SK, 23.08 GAL/SK. WITH 7 BOXES OF TUFF FIBER. |
| Event | 17 | Pump Tail Cement | 6/25/2015 | 06:53:01 | COM7 | 12.8 | 6.0 | 236.0 | 62.1 | 160 SKS AT 12.8 PPG, 2.18 FT3/SK, 12.11 GAL/SK. |
| Event | 18 | Shutdown | 6/25/2015 | 07:03:38 | USER | | | | | |
| Event | 19 | Drop Top Plug | 6/25/2015 | 07:06:13 | USER | | | | | PLUG LAUNCHED |
| Event | 20 | Pump Displacement | 6/25/2015 | 07:08:12 | COM7 | 8.33 | 8.0 | 260.0 | 190.7 | FRESH WATER |
| Event | 21 | Slow Rate | 6/25/2015 | 07:33:42 | USER | 8.30 | 2.0 | 50.0 | 180.7 | SLOWED RATE 10 BBLS PRIOR TO CALCULATED DISPLACEMENT |
| Event | 22 | Bump Plug | 6/25/2015 | 07:36:19 | COM7 | | | 650.0 | | |
| Event | 23 | Check Floats | 6/25/2015 | 07:38:07 | USER | | | | | FLOATS HOLDING HES RETURNED 1 BBL H2O TO PUMP. |
| Event | 24 | Clean Lines | 6/25/2015 | 07:40:41 | USER | | | | | CATCH CAN |
| Event | 25 | Pump Spacer 1 | 6/25/2015 | 08:08:31 | COM7 | 8.33 | 1.5 | 70.0 | 10.0 | SUGAR WATER DOWN PARASITE STRING AS PER COMPANY REP. |
| Event | 26 | Shutdown | 6/25/2015 | 08:18:11 | USER | | | | | |
| Event | 27 | End Job | 6/25/2015 | 08:24:10 | USER | | | | | PIPE WAS STATIC DURING, NO CIRCULATION THROUGHOUT JOB. HES WAITED FOR 2 HOURS BEFORE PUMPING TOPOUT, AS PER COMPANY REP. |
| Event | 28 | Start Job | 6/25/2015 | 11:04:00 | USER | | | | | TOPOUT |
| Event | 29 | Pump Water | 6/25/2015 | 11:06:26 | USER | 8.33 | 1.0 | 5.0 | 1.0 | FRESH WATER |
| Event | 30 | Shutdown | 6/25/2015 | 11:07:43 | USER | | | | | SHUTDWON TO MIX TUB |
| Event | 31 | Pump Cement | 6/25/2015 | 11:12:45 | COM7 | 12.8' | 2.0 | 73.0 | 113.3 | 300 SKS AT 12.8 PPG, 2.12 FT3/SK, 11.15 GAL/SK. WITH 15 BBLS SUPER FLUSH 101. |
| Event | 32 | Pump Water | 6/25/2015 | 12:12:27 | USER | 8.33 | 1.0 | 10.0 | 1.0 | FRESH WATER TO CLEAN LINES |
| Event | 33 | Shutdown | 6/25/2015 | 12:13:04 | USER | | | | | |

| | | | | | | |
|-------|----|-----------------------------|-----------|----------|------|--|
| Event | 34 | End Job | 6/25/2015 | 12:13:45 | COM7 | HES RETURNED 2 BBLS CEMENT TO SURFACE. USED 50 LBS SUGAR FOR JOB, CHARGED 2 ADD HOURS FOR JOB. |
| Event | 35 | Pre-Rig Down Safety Meeting | 6/25/2015 | 12:20:00 | USER | WITH ALL HES PERSONNEL |
| Event | 36 | Rig-Down Equipment | 6/25/2015 | 12:30:00 | USER | |
| Event | 37 | Pre-Convoy Safety Meeting | 6/25/2015 | 13:50:00 | USER | WITH ALL HES PERSONNEL |
| Event | 38 | Crew Leave Location | 6/25/2015 | 14:00:00 | USER | |
| Event | 39 | Comment | 6/25/2015 | 14:01:00 | USER | THANK YOU FOR USING HALLIBURTON CEMENT DEPARTMENT. JESSE SLAUGHTER AND CREW. |

CAERUS - PUCKETT 12C-1 - SURFACE



— DH Density (ppg)
 — Comb Pump Rate (bbl/min)
 — DS Pump Press (psi)
 — Pump Stg Tot (bbl)

- | | | | | |
|---|---|--|---------------------------------------|---------------|
| ① Call Out n/a;n/a;n/a;n/a | ⑤ Assessment Of Location Safety Meeting n/a;n/a;n/a;n/a | ⑨ Pre-Job Safety Meeting n/a;n/a;n/a;n/a | ⑬ Pump H2O Spacer 8.49;0;18;0 | ⑰ Pump Tail C |
| ② Pre-Convoy Safety Meeting n/a;n/a;n/a;n/a | ⑥ Spot Equipment n/a;n/a;n/a;n/a | ⑩ Start Job 8.44;0;1;0 | ⑭ Pump Super Flush Spacer 8.52;4;86;0 | ⑱ Shutdown 1 |
| ③ Crew Leave Yard n/a;n/a;n/a;n/a | ⑦ Pre-Rig Up Safety Meeting n/a;n/a;n/a;n/a | ⑪ Prime Pumps 8.52;1.3;10;0.1 | ⑮ Pump H2O Spacer 8.76;3.6;109;0.1 | ⑲ Drop Top Pl |
| ④ Arrive At Loc n/a;n/a;n/a;n/a | ⑧ Rig-Up Equipment n/a;n/a;n/a;n/a | ⑫ Test Lines 8.49;0;1313;1.5 | ⑯ Pump Lead Cement 8.5;3.94;83.46;6.3 | 20 Pump Displ |

▼ **HALLIBURTON** | iCem® Service

Created: 2015-06-24 23:52:30, Version: 4.1.107

Edit

Customer: CAERUS OIL AND GAS LLC - EBUS

Job Date: 6/25/2015 4:46:01 AM

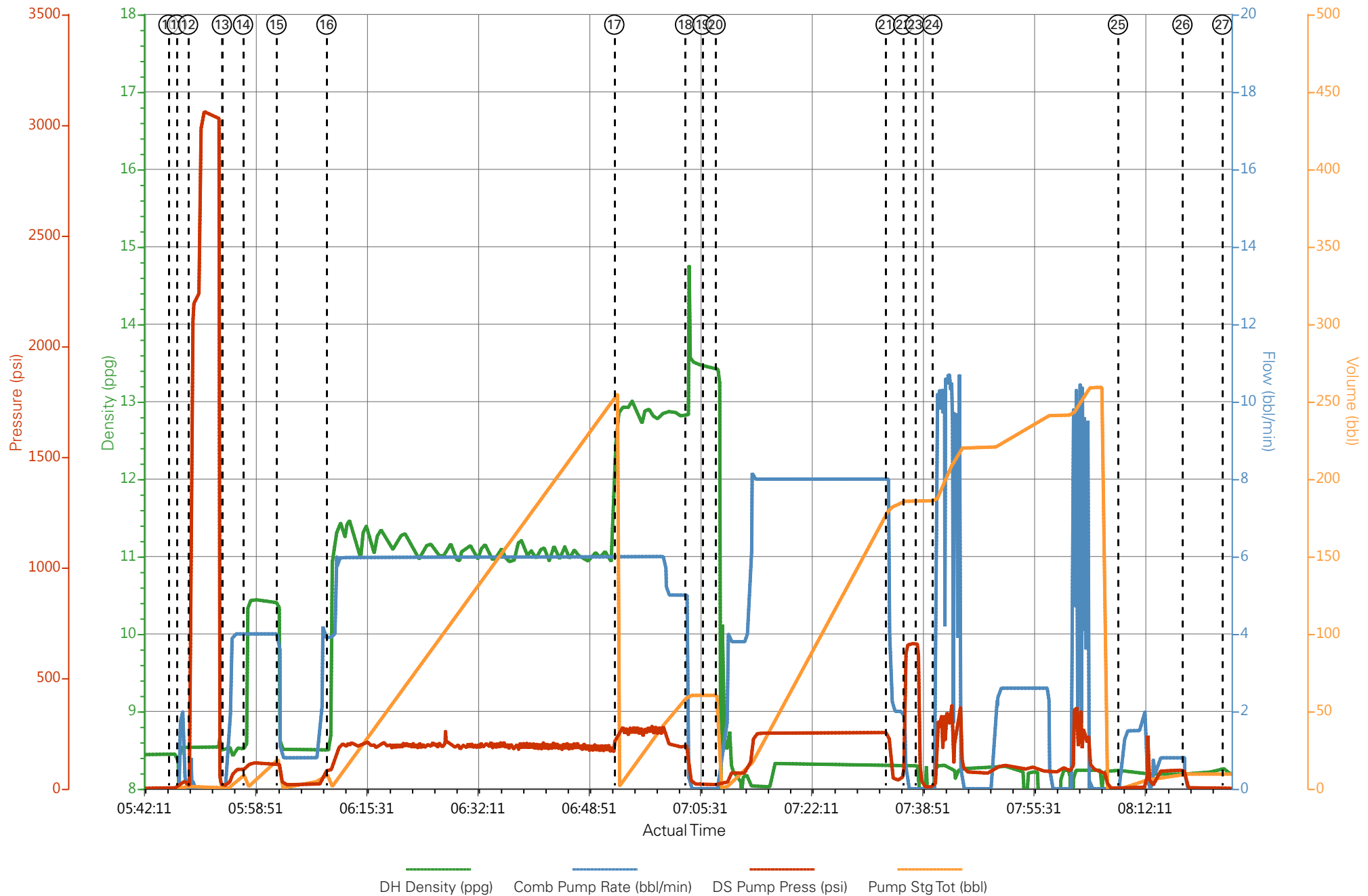
Well: PUCKETT 12C-1

Representative: GEORGE URBAN

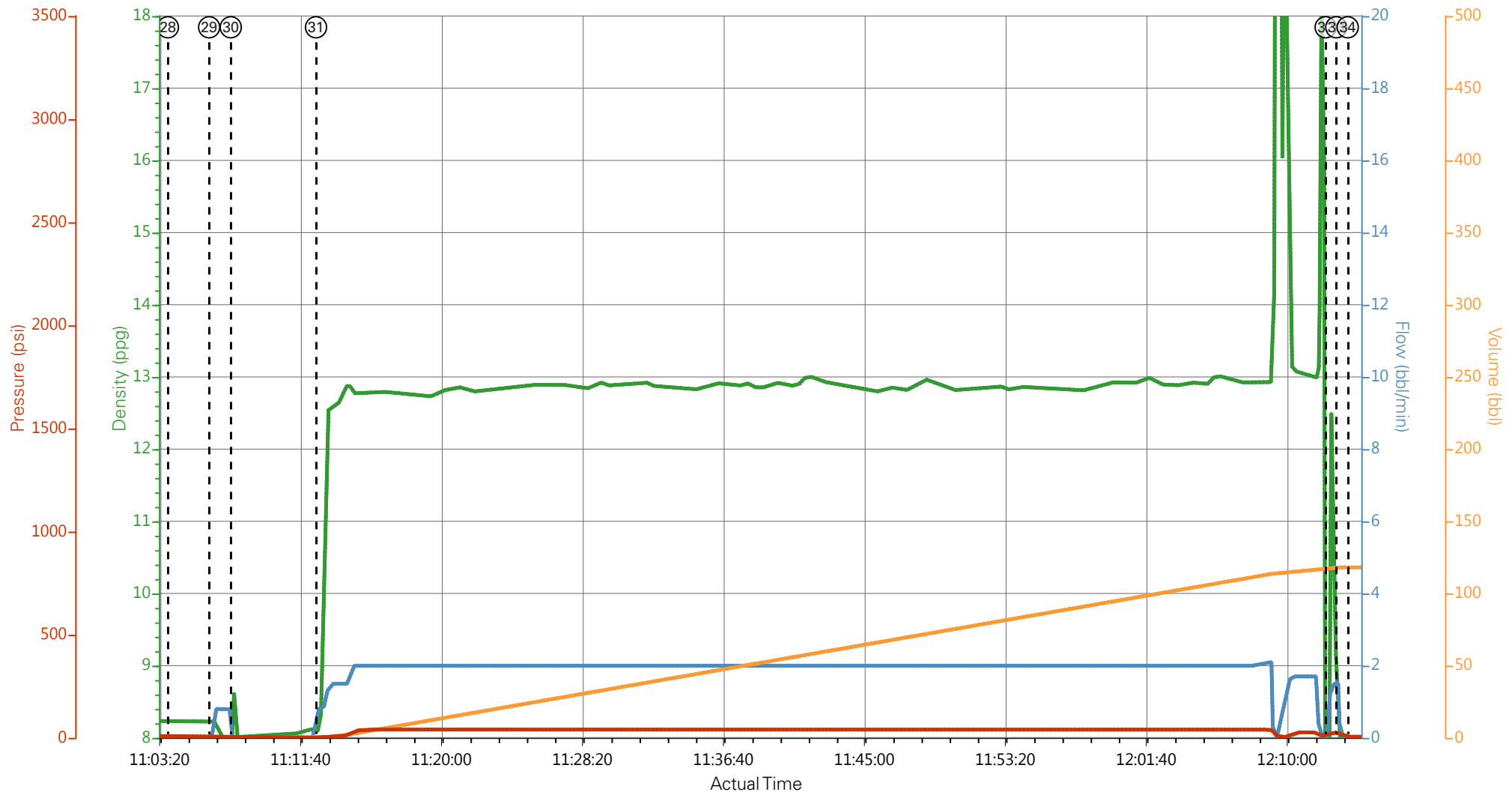
Sales Order #: 902518640

Elite #7: JESSE SLAUGHTER / DIRK
BRENNECKE

CAERUS - PUCKETT 12C-1 - SURFACE



CAERUS - PUCKETT 12C-1 - SURFACE



— DH Density (ppg)
 — Comb Pump Rate (bbl/min)
 — DS Pump Press (psi)
 — Pump Stg Tot (bbl)

- | | | | | |
|---|---|--|---------------------------------------|---------------|
| ① Call Out n/a;n/a;n/a;n/a | ⑤ Assessment Of Location Safety Meeting n/a;n/a;n/a;n/a | ⑨ Pre-Job Safety Meeting n/a;n/a;n/a;n/a | ⑬ Pump H2O Spacer 8.49;0;18;0 | ⑰ Pump Tail C |
| ② Pre-Convoy Safety Meeting n/a;n/a;n/a;n/a | ⑥ Spot Equipment n/a;n/a;n/a;n/a | ⑩ Start Job 8.44;0;1;0 | ⑭ Pump Super Flush Spacer 8.52;4;86;0 | ⑱ Shutdown 1 |
| ③ Crew Leave Yard n/a;n/a;n/a;n/a | ⑦ Pre-Rig Up Safety Meeting n/a;n/a;n/a;n/a | ⑪ Prime Pumps 8.52;1.3;10;0.1 | ⑮ Pump H2O Spacer 8.76;3.6;109;0.1 | ⑲ Drop Top Pl |
| ④ Arrive At Loc n/a;n/a;n/a;n/a | ⑧ Rig-Up Equipment n/a;n/a;n/a;n/a | ⑫ Test Lines 8.49;0;1313;1.5 | ⑯ Pump Lead Cement 8.5;3.94;83.46;6.3 | 20 Pump Displ |

▼ **HALLIBURTON** | iCem® Service

Created: 2015-06-24 23:52:30, Version: 4.1.107

Edit

Customer: CAERUS OIL AND GAS LLC - EBUS

Job Date: 6/25/2015 4:46:01 AM

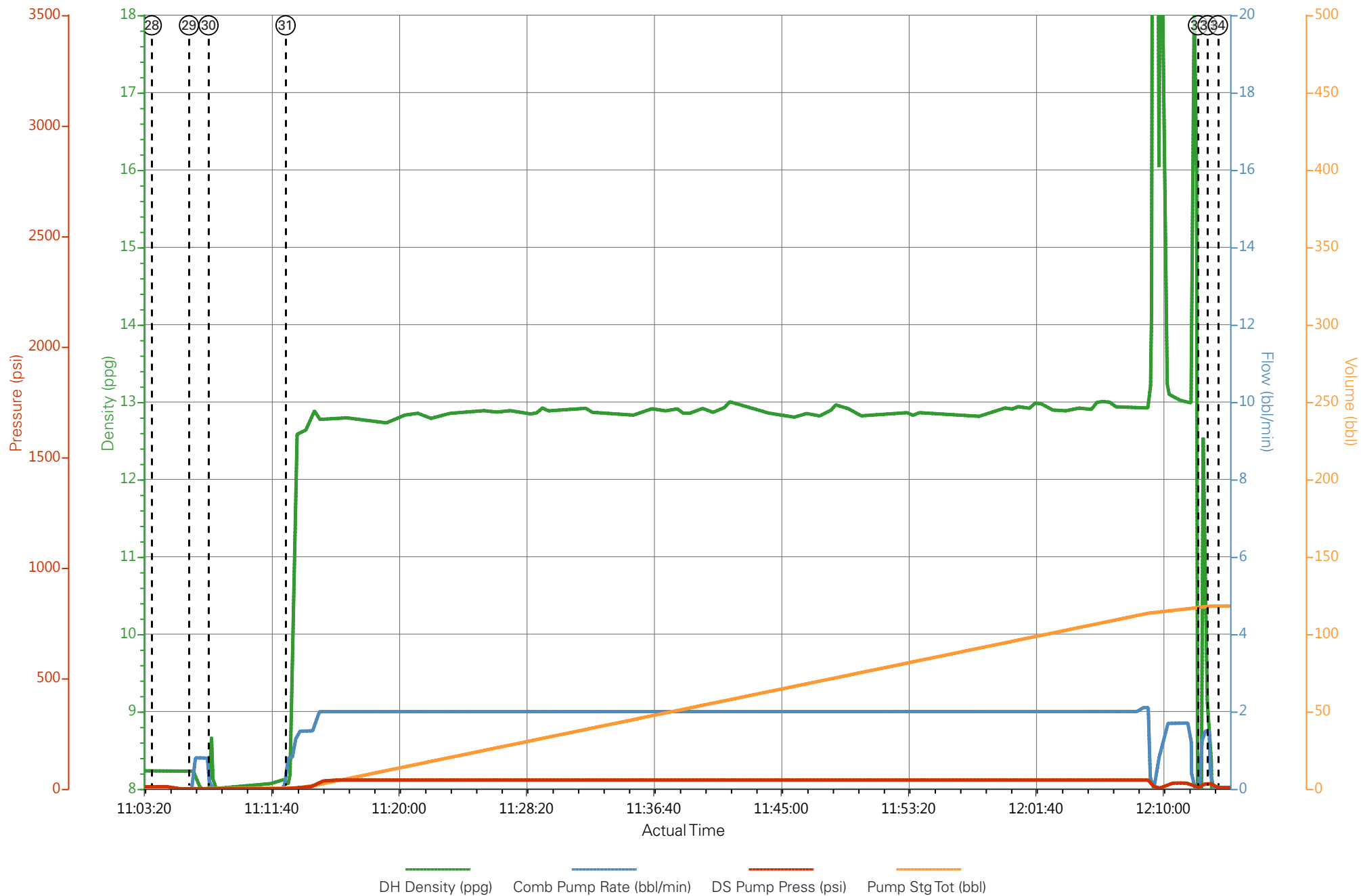
Well: PUCKETT 12C-1

Representative: GEORGE URBAN

Sales Order #: 902518640

Elite #7: JESSE SLAUGHTER / DIRK
BRENNECKE

CAERUS - PUCKETT 12C-1 - SURFACE



HALLIBURTON

Water Analysis Report

Company: CAERUS

Submitted by: JESSE SLAUGHTER

Attention: LAB

Lease PUCKETT

Well # 12C-1

Date: 6/25/2015

Date Rec.:

S.O.# 902518640

Job Type: SURFACE

| | | |
|-----------------------------|--------------|-------------------------|
| Specific Gravity | <i>MAX</i> | 1 |
| pH | <i>8</i> | 6 |
| Potassium (K) | <i>5000</i> | 250 Mg / L |
| Calcium (Ca) | <i>500</i> | 120 Mg / L |
| Iron (FE2) | <i>300</i> | 0 Mg / L |
| Chlorides (Cl) | <i>3000</i> | 0 Mg / L |
| Sulfates (SO ₄) | <i>1500</i> | UNDER 200 Mg / L |
| Chlorine (Cl ₂) | | 0 Mg / L |
| Temp | <i>40-80</i> | 70 Deg |
| Total Dissolved Solids | | 200 Mg / L |

Respectfully: JESSE SLAUGHTER

Title: CEMENTING SUPERVISOR

Location: Grand Junction, CO

NOTICE:

This report is limited to the described sample tested. Any person using or relying on this report agrees that Halliburton shall not be liable for any loss or damage whether due to act or omission resulting from such report or its