

CAERUS OIL AND GAS LLC-EBUS

PUCKETT 12B-1

**H&P 330**

## **Post Job Summary**

# **Cement Surface**

Date Prepared: 06/21/2015  
Job Date: 06/20/2015

Submitted by: Keven Nye – Grand Junction Cement Engineer

The Road to Excellence Starts with Safety

Sold To #: 360446	Ship To #: 3623375	Quote #:	Sales Order #: 0902512138
Customer: CAERUS OIL AND GAS LLC - EBUS		Customer Rep: WHITEY COTTAM	
Well Name: PUCKETT	Well #: 12B-1	API/UWI #: 05-045-22621-00	
Field: WILDCAT	City (SAP): PARACHUTE	County/Parish: GARFIELD	State: COLORADO
Legal Description: 2-7S-97W-2200FNL-638FEL			
Contractor: H & P DRLG		Rig/Platform Name/Num: H & P 330	
Job BOM: 7521			
Well Type: DIRECTIONAL GAS			
Sales Person: HALAMERICA\HB80977		Srcv Supervisor: Jesse Slaughter	

**Job**

Formation Name	
Formation Depth (MD)	Top Bottom
Form Type	BHST
Job depth MD	2518ft Job Depth TVD
Water Depth	Wk Ht Above Floor 5ft
Perforation Depth (MD)	From To

**Well Data**

Description	New / Used	Size in	ID in	Weight lbm/ft	Thread	Grade	Top MD ft	Bottom MD ft	Top TVD ft	Bottom TVD ft
Casing		9.625	8.921	36			0	2518		0
Open Hole Section			14.75				0	2536		0

**Tools and Accessories**

Type	Size in	Qty	Make	Depth ft	Type	Size in	Qty	Make
Guide Shoe	9.625	1		2518	Top Plug	9.625	1	HES
Float Shoe	9.625	1			Bottom Plug	9.625		HES
Float Collar	9.625	1			SSR plug set	9.625		HES
Insert Float	9.625	1			Plug Container	9.625	1	HES
Stage Tool	9.625	1			Centralizers	9.625		HES

**Miscellaneous Materials**

Gelling Agt	Conc	Surfactant	Conc	Acid Type	Qty	Conc
Treatment Fld	Conc	Inhibitor	Conc	Sand Type	Size	Qty

**Fluid Data**

Stage/Plug #: 1

Fluid #	Stage Type	Fluid Name	Qty	Qty UoM	Mixing Density lbm/gal	Yield ft <sup>3</sup> /sack	Mix Fluid Gal	Rate bbl/min	Total Mix Fluid Gal
1	Fresh Water	Fresh Water	10	bbl	8.34			4	

Fluid #	Stage Type	Fluid Name	Qty	Qty UoM	Mixing Density lbm/gal	Yield ft <sup>3</sup> /sack	Mix Fluid Gal	Rate bbl/min	Total Mix Fluid Gal
2	Super Flush 101	Super Flush 101	20	bbl	9.17			4	

21 gal/bbl		FRESH WATER							
<b>Fluid #</b>	<b>Stage Type</b>	<b>Fluid Name</b>	<b>Qty</b>	<b>Qty UoM</b>	<b>Mixing Density lbm/gal</b>	<b>Yield ft3/sack</b>	<b>Mix Fluid Gal</b>	<b>Rate bbl/mi n</b>	<b>Total Mix Fluid Gal</b>
3	Fresh Water	Fresh Water	10	bbl	8.34			4	
23.08 Gal		FRESH WATER							
<b>Fluid #</b>	<b>Stage Type</b>	<b>Fluid Name</b>	<b>Qty</b>	<b>Qty UoM</b>	<b>Mixing Density lbm/gal</b>	<b>Yield ft3/sack</b>	<b>Mix Fluid Gal</b>	<b>Rate bbl/mi n</b>	<b>Total Mix Fluid Gal</b>
4	Lead Cement	VARICEM (TM) CEMENT	375	sack	11	3.65		6	23.08
23.08 Gal		FRESH WATER							
<b>Fluid #</b>	<b>Stage Type</b>	<b>Fluid Name</b>	<b>Qty</b>	<b>Qty UoM</b>	<b>Mixing Density lbm/gal</b>	<b>Yield ft3/sack</b>	<b>Mix Fluid Gal</b>	<b>Rate bbl/mi n</b>	<b>Total Mix Fluid Gal</b>
5	Tail Cement	VARICEM (TM) CEMENT	160	sack	12.8	2.18		6	12.11
12.11 Gal		FRESH WATER							
<b>Fluid #</b>	<b>Stage Type</b>	<b>Fluid Name</b>	<b>Qty</b>	<b>Qty UoM</b>	<b>Mixing Density lbm/gal</b>	<b>Yield ft3/sack</b>	<b>Mix Fluid Gal</b>	<b>Rate bbl/mi n</b>	<b>Total Mix Fluid Gal</b>
6	Displacement	Displacement	191.2	bbl	8.34			6	
<b>Fluid #</b>	<b>Stage Type</b>	<b>Fluid Name</b>	<b>Qty</b>	<b>Qty UoM</b>	<b>Mixing Density lbm/gal</b>	<b>Yield ft3/sack</b>	<b>Mix Fluid Gal</b>	<b>Rate bbl/mi n</b>	<b>Total Mix Fluid Gal</b>
7	ReverCem	REVERCEM (TM) CEMENT	238	sack	12.8	2.12		2	11.15
11.15 Gal		FRESH WATER							
<b>Cement Left In Pipe</b>	<b>Amount</b>	44 ft			<b>Reason</b>	Shoe Joint			
<b>Comment</b>									

## 1.0 Real-Time Job Summary

### 1.1 Job Event Log

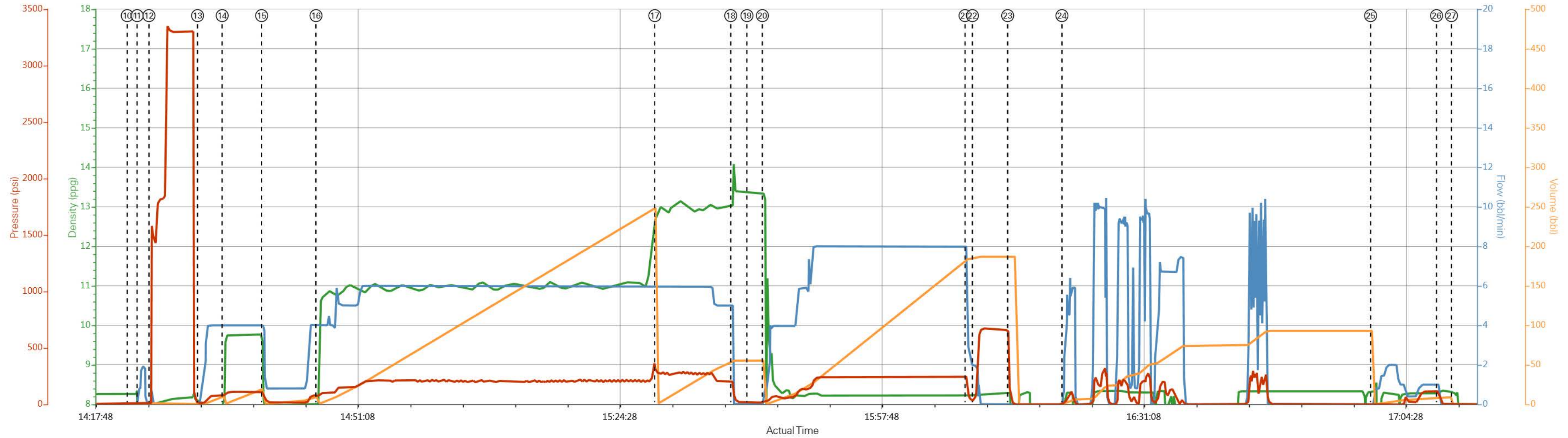
Type	Seq. No.	Activity	Date	Time	Source	DH Density <i>(ppg)</i>	Comb Pump Rate <i>(bbl/min)</i>	Pump Stg Tot <i>(bbl)</i>	Driv-Side Pump Pressure <i>(psi)</i>	Comments
Event	1	Call Out	6/19/2015	07:00:00	USER					
Event	2	Pre-Convoy Safety Meeting	6/19/2015	10:20:00	USER					WITH ALL HES PERSONNEL
Event	3	Crew Leave Yard	6/19/2015	10:30:00	USER					
Event	4	Arrive At Loc	6/19/2015	12:30:00	USER					RIG WAS RUNNING CASING UPON HES ARRIVAL
Event	5	Assessment Of Location Safety Meeting	6/19/2015	12:35:00	USER					WITH ALL HES PERSONNEL
Event	6	Other	6/19/2015	12:40:00	USER					
Event	7	Pre-Rig Up Safety Meeting	6/19/2015	12:50:00	USER					WITH ALL HES PERSONNEL
Event	8	Rig-Up Equipment	6/19/2015	13:00:00	USER					
Event	9	Pre-Job Safety Meeting	6/19/2015	13:41:01	USER					WITH ALL PERSONNEL
Event	10	Start Job	6/19/2015	14:22:03	COM7					TD 2536 FT, TP 2518 FT, SHOE 43.97 FT, CSG 9 5/8 IN 36 LB/FT, HOLE 14 3/4 IN, MUD WT 8.9 PPG 60 VIS
Event	11	Prime Pumps	6/19/2015	14:23:19	USER	8.33	2.0	2.0	16.0	FRESH WATER
Event	12	Test Lines	6/19/2015	14:24:48	COM7					TESTED LINES TO 3300 PSI PRESSURE HOLDING
Event	13	Pump Spacer 1	6/19/2015	14:30:59	COM7	8.33	4.0	10.0	63.0	FRESH WATER
Event	14	Pump Spacer 2	6/19/2015	14:34:07	COM7	9.17	4.0	20.0	112.0	SUPERFLUSH 101
Event	15	Pump Spacer 1	6/19/2015	14:39:08	COM7	8.33	4.0	10.0	70.0	FRESH WATER

Event	16	Pump Lead Cement	6/19/2015	14:46:03	COM7	11.0	6.0	243.8	273.0	375 SKS AT 11.0 PPG, 3.65 FT3/SK, 23.08 GAL/SK. WITH 105 LBS TUFF FIBER.
Event	17	Pump Tail Cement	6/19/2015	15:29:09	COM7	12.8	6.0	62.1	220.0	160 SKS AT 12.8 PPG, 2.18 FT3/SK, 12.11 GAL/SK.
Event	18	Shutdown	6/19/2015	15:38:49	USER					
Event	19	Drop Top Plug	6/19/2015	15:40:53	USER					PLUG LAUNCHED.
Event	20	Pump Displacement	6/19/2015	15:42:50	COM7	8.33	8.0	191.2	246.0	FRESH WATER
Event	21	Slow Rate	6/19/2015	16:08:37	USER	8.33	2.0	181.2	80.0	SLOWED RATE 10 BBLS PRIOR TO CALCULATED DISPLACEMENT.
Event	22	Bump Plug	6/19/2015	16:09:33	COM7				659.0	
Event	23	Check Floats	6/19/2015	16:14:02	USER					FLOATS HOLDING. HES RETURNED 1 BBL H2O TO PUMP.
Event	24	Clean Lines	6/19/2015	16:20:57	USER					CLEAN PUMPS AND LINES TO CATCH CAN
Event	25	Pump Spacer 1	6/19/2015	17:00:13	COM7	8.33	2.0	10.0	116.0	FRESH WATER WITH 10 LBS SUGAR.
Event	26	Shutdown	6/19/2015	17:08:36	USER					
Event	27	End Job	6/19/2015	17:10:30	COM7					PIPE WAS STATIC DURING JOB, NO CIRCULATION THROUGHOUT PRIMARY JOB. HES WAITED 3 HOURS UNTIL TOPPING OUT AS PER COMPANY REP.
Event	28	Start Job	6/19/2015	19:30:00	COM7					TOPOUT
Event	29	Pump Spacer 2	6/19/2015	19:43:49	COM7	8.33	1.0	1.0	5.0	FRESH WATER AHEAD TO CLEAR LINES
Event	30	Pump Cement	6/19/2015	19:45:17	COM7	12.8	2.0	90.0	45.0	240 SKS AT 12.8 PPG, 2.12 FT3/SK, 11.15 GAL/SK. WITH 2 BBLS SUPERFLUSH

101.

Event	31	Shutdown	6/19/2015	20:49:11	USER	
Event	32	End Job	6/19/2015	20:50:00	COM7	HES RETURNED TRACE AMOUNT OF CEMENT TO SURFACE. HES USED 80 LB SUGAR FOR JOB. HES CHARGED 1 ADD HOUR FOR JOB.
Event	33	Pre-Rig Down Safety Meeting	6/19/2015	21:00:00	USER	WITH ALL HES PERSONNEL
Event	34	Rig-Down Equipment	6/19/2015	21:10:00	USER	
Event	35	Pre-Convoy Safety Meeting	6/19/2015	21:20:00	USER	WITH ALL HES PERSONNEL
Event	36	Crew Leave Location	6/19/2015	23:00:00	USER	
Event	37	Comment	6/19/2015	23:00:01	USER	THANK YOU FOR USING HALLIBURTON CEMENT DEPARTMENT JESSE SLAUGHTER AND CREW.

# CAERUS OIL AND GAS - PUCKETT 12B-1 - SURFACE



DH Density (ppg)    Comb Pump Rate (bbl/min)    DS Pump Press (psi)    Pump Stg Tot (bbl)

① Call Out n/a;n/a;n/a;n/a	⑥ Spot Equipment n/a;n/a;n/a;n/a	⑪ Prime Pumps 7.92;0.8;13;0.1	⑮ Pump Lead Cement 8.4;64;0.1	21 Slow Rate 8.24;4;176;183.5	26 Shutdown 8.28;1;116;8.9	31 Shutdown 13.29;1.6;34;86.1	36 Crew Leave Location n/a;n/a;n/a;n/a
② Pre-Convoy Safety Meeting n/a;n/a;n/a;n/a	⑦ Pre-Rig Up Safety Meeting n/a;n/a;n/a;n/a	⑫ Test Lines 8;0;11;1.4	⑯ Pump Tail Cement 12.79;6;273;0.1	22 Bump Plug 8.24;2;47;185.7	27 End Job 8.3;0;-2;0	32 End Job 21.49;0;-1;86.2	37 Comment n/a;n/a;n/a;n/a
③ Crew Leave Yard n/a;n/a;n/a;n/a	⑧ Rig-Up Equipment n/a;n/a;n/a;n/a	⑬ Pump H2O Spacer 8.11;0;10;0	⑰ Shutdown 13.03;5;199;55.2	23 Check Floats 8.3;0;133;186.7	28 Start Job 0.01;0;3;0	33 Pre-Rig Down Safety Meeting 10.09;1.7;16;96.3	
④ Arrive At Loc n/a;n/a;n/a;n/a	⑨ Pre-Job Safety Meeting 8.22;0.8;104;1.8	⑭ Pump Superflush Spacer 8.02;4;79;0.1	⑱ Drop Top Plug 13.35;0;17;55.4	24 Clean Lines 3.14;1.5;4;0	29 Pump H2O Spacer 0.02;0;2;0	34 Rig-Down Equipment 8.49;10.4;431;121.4	
⑤ Assessment Of Location Safety Meeting n/a;n/a;n/a;n/a	⑩ Start Job 8.27;0;4;0	⑰ Pump H2O Spacer 8.04;4;98;0.1	20 Pump Displacement 13.31;0.8;20;0	25 Pump Sugar Water 8.29;0;-3;92.9	30 Pump Cement 5.49;0.8;3;0	35 Pre-Convoy Safety Meeting n/a;n/a;n/a;n/a	

HALLIBURTON | iCem® Service

Created: 2015-06-19 08:53:14, Version: 4.1.107 Edit

Customer: CAERUS OIL AND GAS LLC - EBUS

Job Date: 6/19/2015 1:37:18 PM

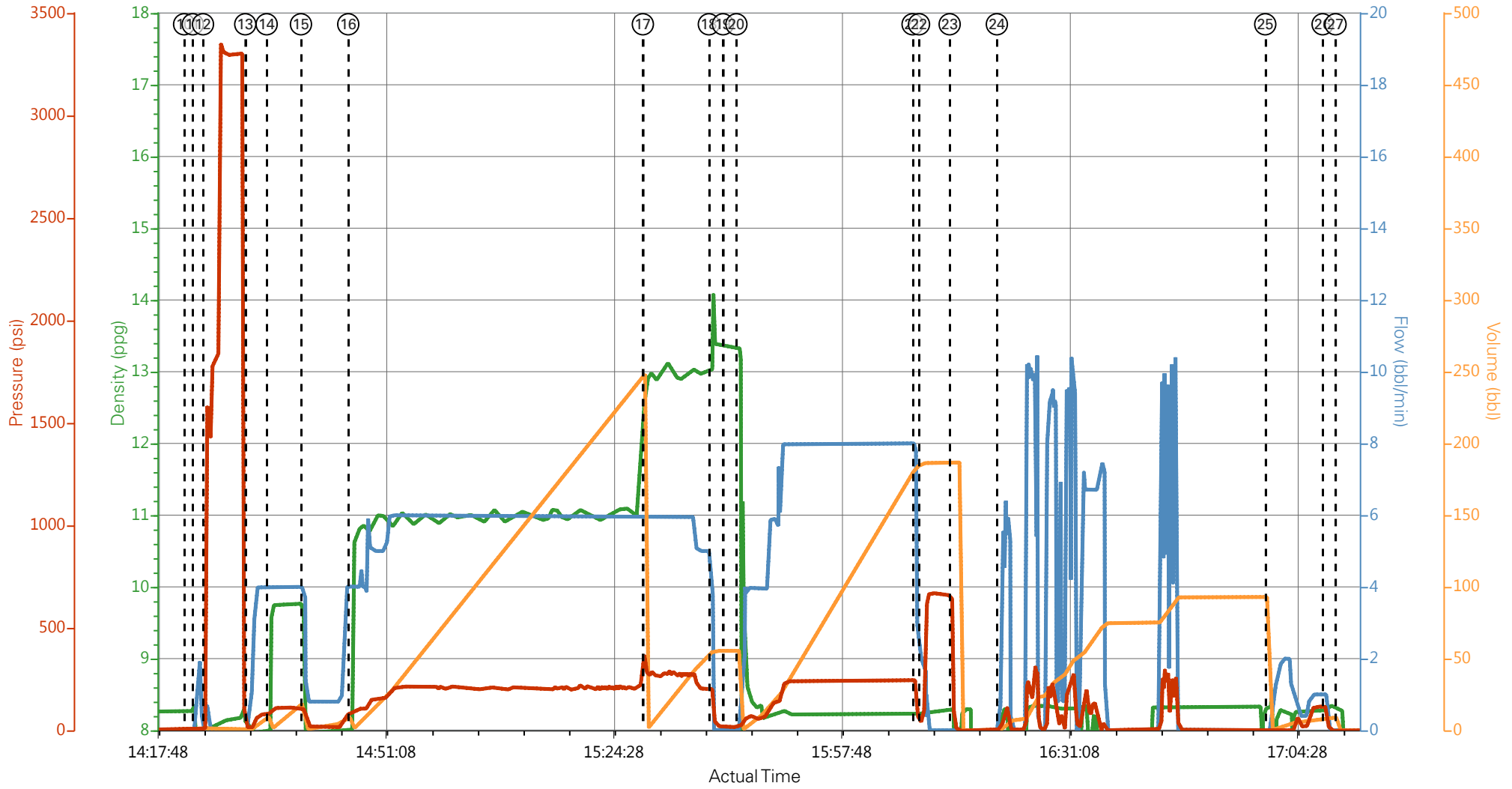
Well: PUCKETT 12B-1

Representative: WHITEY COTTAM

Sales Order #: 902512138

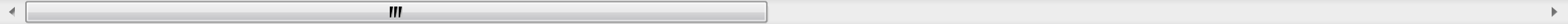
Elite #7: JESSE SLAUGHTER / DIRK BRENNECKE

# CAERUS OIL AND GAS - PUCKETT 12B-1 - SURFACE



— DH Density (ppg)   
 — Comb Pump Rate (bbl/min)   
 — DS Pump Press (psi)   
 — Pump Stg Tot (bbl)

- |   |   |   |  |             |
|---|---|---|--|-------------|
| ① Call Out n/a;n/a;n/a;n/a                  | ⑤ Assessment Of Location Safety Meeting n/a;n/a;n/a;n/a | ⑨ Pre-Job Safety Meeting 8.22;0.8;104;1.8 | ⑬ Pump H2O Spacer 8.11;0;10;0          | ⑰ Pump Tail |
| ② Pre-Convoy Safety Meeting n/a;n/a;n/a;n/a | ⑥ Spot Equipment n/a;n/a;n/a;n/a                        | ⑩ Start Job 8.27;0;4;0                    | ⑭ Pump Superflush Spacer 8.02;4;79;0.1 | ⑱ Shutdow   |
| ③ Crew Leave Yard n/a;n/a;n/a;n/a           | ⑦ Pre-Rig Up Safety Meeting n/a;n/a;n/a;n/a             | ⑪ Prime Pumps 7.92;0.8;13;0.1             | ⑮ Pump H2O Spacer 8.04;4;98;0.1        | ⑲ Drop Top  |
| ④ Arrive At Loc n/a;n/a;n/a;n/a             | ⑧ Rig-Up Equipment n/a;n/a;n/a;n/a                      | ⑫ Test Lines 8;0;11;1.4                   | ⑯ Pump Lead Cement 8;4;64;0.1          | ⑳ Pump Di   |



**HALLIBURTON** | iCem® Service

Created: 2015-06-19 08:53:14, Version: 4.1.107

Edit

Customer: CAERUS OIL AND GAS LLC - EBUS

Job Date: 6/19/2015 1:37:18 PM

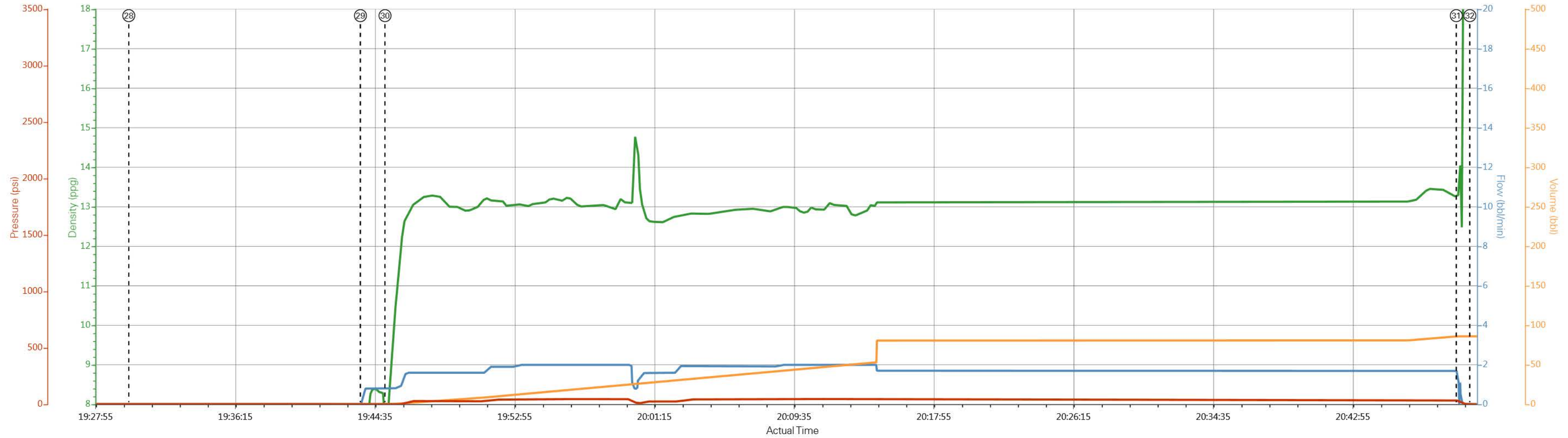
Well: PUCKETT 12B-1

Representative: WHITEY COTTAM

Sales Order #: 902512138

Elite #7: JESSE SLAUGHTER / DIRK  
BRENNECKE

# CAERUS OIL AND GAS - PUCKETT 12B-1 - SURFACE/TOPOUT



DH Density (ppg)    Comb Pump Rate (bbl/min)    DS Pump Press (psi)    Pump Stg Tot (bbl)

① Call Out n/a;n/a;n/a;n/a	⑥ Spot Equipment n/a;n/a;n/a;n/a	⑪ Prime Pumps 7.92;0.8;13;0.1	⑮ Pump Lead Cement 8.4;4;64;0.1	21 Slow Rate 8.24;4;176;183.5	26 Shutdown 8.28;1;116;8.9	31 Shutdown 13.29;1.6;34;86.1	36 Crew Leave Location n/a;n/a;n/a;n/a
② Pre-Convoy Safety Meeting n/a;n/a;n/a;n/a	⑦ Pre-Rig Up Safety Meeting n/a;n/a;n/a;n/a	⑫ Test Lines 8;0;11;1.4	⑯ Pump Tail Cement 12.79;6;273;0.1	22 Bump Plug 8.24;2;47;185.7	27 End Job 8.3;0;-2;0	32 End Job 21.49;0;-1;86.2	37 Comment n/a;n/a;n/a;n/a
③ Crew Leave Yard n/a;n/a;n/a;n/a	⑧ Rig-Up Equipment n/a;n/a;n/a;n/a	⑬ Pump H2O Spacer 8.11;0;10;0	⑰ Shutdown 13.03;5;199;55.2	23 Check Floats 8.3;0;133;186.7	28 Start Job 0.01;0;3;0	33 Pre-Rig Down Safety Meeting 10.09;1.7;16;96.3	
④ Arrive At Loc n/a;n/a;n/a;n/a	⑨ Pre-Job Safety Meeting 8.22;0.8;104;1.8	⑭ Pump Superflush Spacer 8.02;4;79;0.1	⑱ Drop Top Plug 13.35;0;17;55.4	24 Clean Lines 3.14;1.5;4;0	29 Pump H2O Spacer 0.02;0;2;0	34 Rig-Down Equipment 8.49;10.4;431;121.4	
⑤ Assessment Of Location Safety Meeting n/a;n/a;n/a;n/a	⑩ Start Job 8.27;0;4;0	⑵ Pump H2O Spacer 8.04;4;98;0.1	20 Pump Displacement 13.31;0.8;20;0	25 Pump Sugar Water 8.29;0;-3;92.9	30 Pump Cement 5.49;0.8;3;0	35 Pre-Convoy Safety Meeting n/a;n/a;n/a;n/a	

HALLIBURTON | iCem® Service

Created: 2015-06-19 08:53:14, Version: 4.1.107 Edit

Customer: CAERUS OIL AND GAS LLC - EBUS

Job Date: 6/19/2015 1:37:18 PM

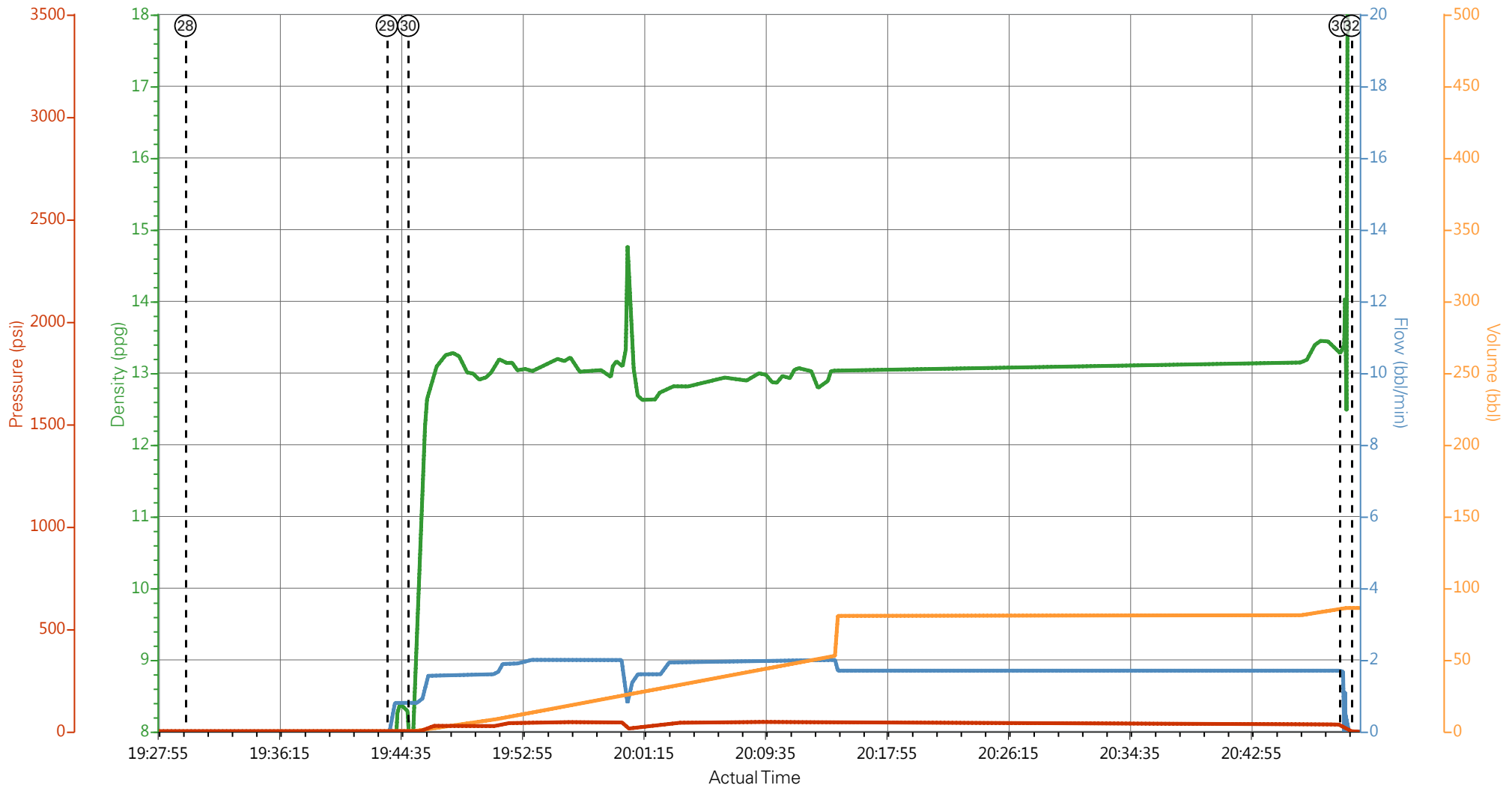
Well: PUCKETT 12B-1

Representative: WHITEY COTTAM

Sales Order #: 902512138

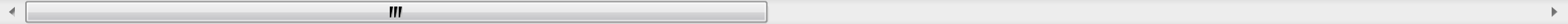
Elite #7: JESSE SLAUGHTER / DIRK BRENNECKE

# CAERUS OIL AND GAS - PUCKETT 12B-1 - SURFACE/TOPOUT



— DH Density (ppg)   
 — Comb Pump Rate (bbl/min)   
 — DS Pump Press (psi)   
 — Pump Stg Tot (bbl)

- |   |   |   |  |            |
|---|---|---|--|------------|
| ① Call Out n/a;n/a;n/a;n/a                  | ⑤ Assessment Of Location Safety Meeting n/a;n/a;n/a;n/a | ⑨ Pre-Job Safety Meeting 8.22;0.8;104;1.8 | ⑬ Pump H2O Spacer 8.11;0;10;0          | ⑰ Pump Tai |
| ② Pre-Convoy Safety Meeting n/a;n/a;n/a;n/a | ⑥ Spot Equipment n/a;n/a;n/a;n/a                        | ⑩ Start Job 8.27;0;4;0                    | ⑭ Pump Superflush Spacer 8.02;4;79;0.1 | ⑱ Shutdow  |
| ③ Crew Leave Yard n/a;n/a;n/a;n/a           | ⑦ Pre-Rig Up Safety Meeting n/a;n/a;n/a;n/a             | ⑪ Prime Pumps 7.92;0.8;13;0.1             | ⑮ Pump H2O Spacer 8.04;4;98;0.1        | ⑲ Drop Top |
| ④ Arrive At Loc n/a;n/a;n/a;n/a             | ⑧ Rig-Up Equipment n/a;n/a;n/a;n/a                      | ⑫ Test Lines 8;0;11;1.4                   | ⑯ Pump Lead Cement 8;4;64;0.1          | ⑳ Pump Di  |



**HALLIBURTON** | iCem® Service

Created: 2015-06-19 08:53:14, Version: 4.1.107

Edit

Customer: CAERUS OIL AND GAS LLC - EBUS

Job Date: 6/19/2015 1:37:18 PM

Well: PUCKETT 12B-1

Representative: WHITEY COTTAM

Sales Order #: 902512138

Elite #7: JESSE SLAUGHTER / DIRK  
BRENNECKE

# HALLIBURTON

## Water Analysis Report

Company: CAERUS

Date: 6/19/2015

Submitted by: JESSE SLAUGHTER

Date Rec.: \_\_\_\_\_

Attention: LAB

S.O.# 902512138

Lease PUCKETT

Job Type: SURFACE

Well # 12B-1

Specific Gravity	<i>MAX</i>	<b>1</b>
pH	<i>8</i>	<b>6</b>
Potassium (K)	<i>5000</i>	<b>250 Mg / L</b>
Calcium (Ca)	<i>500</i>	<b>120 Mg / L</b>
Iron (FE2)	<i>300</i>	<b>0 Mg / L</b>
Chlorides (Cl)	<i>3000</i>	<b>0 Mg / L</b>
Sulfates (SO <sub>4</sub> )	<i>1500</i>	<b>UNDER 200 Mg / L</b>
Chlorine (Cl <sub>2</sub> )		<b>0 Mg / L</b>
Temp	<i>40-80</i>	<b>65 Deg</b>
Total Dissolved Solids		<b>200 Mg / L</b>

Respectfully: JESSE SLAUGHTER

Title: CEMENTING SUPERVISOR

Location: Grand Junction, CO

**NOTICE:**

This report is limited to the described sample tested. Any person using or relying on this report agrees that Halliburton shall not be liable for any loss or damage whether due to act or omission resulting from such report or