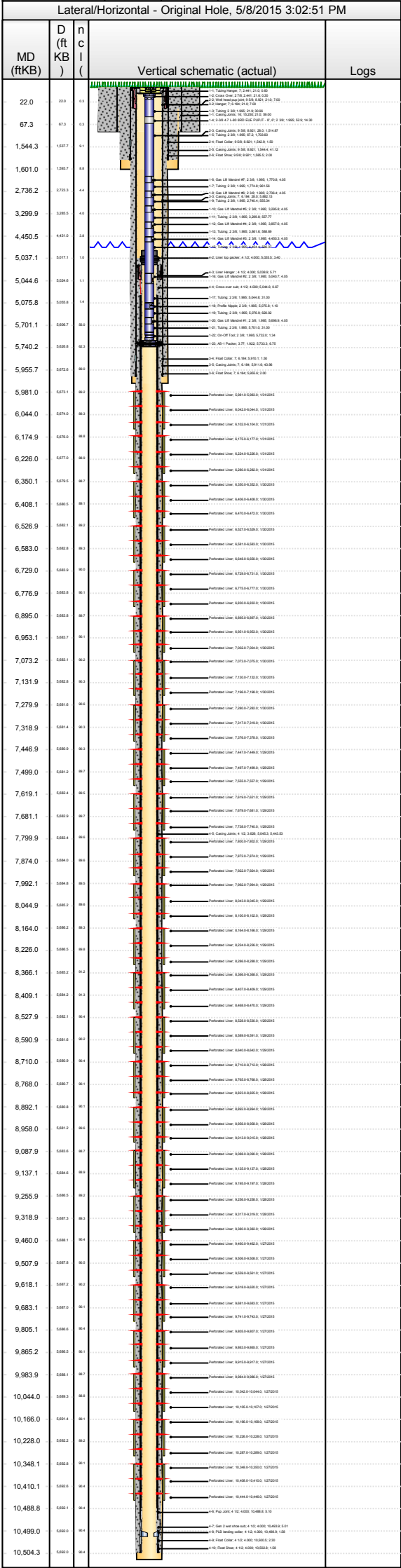




Lease Review  
Well Name: RAZOR 33P-3316

API Number 051234022000	WPC ID 1CO0761107	Well Permit Number	Field Name DJ Horizontal Niobrara	County Weld	State CO
Well Configuration Type Lateral/Horizontal	Orig KB Elv (ft) 4,730.00	Ground Elevation (ft) 4,709.00	Casing Flange Elevation (ft)	Tubing Head Elevation (ft)	Total Depth (ftKB) 10,510.0
Original Spud Date 12/8/2014	Completion Date 1/31/2015	Asset Group Redtail	Responsible Engineer Charles Ohlson	N/S Dist (ft) 330.0 N/S Ref FSL	E/W Dist (ft) 570.0 E/W Ref FEL
Lot	Quarter 1 SE	Quarter 2 SE	Quarter 3	Quarter 4	Section 33
			Section Suffix	Section Type	Township 10 N
					Township N/S Dir N
					Range 58
					Range E/W Dir W
					Meridian



Section Des	Wellbore Name	Start Date	Size (in)	Act Top (ftKB)	Act Btm (ftKB)
Conductor	Original Hole	10/30/2014	24	21.0	80.0
Surface	Original Hole	12/8/2014	13 1/2	80.0	1,601.0
Intermediate	Original Hole	12/9/2014	8 3/4	1,601.0	5,972.0
Lateral	Original Hole	12/11/2014	6	5,972.0	10,510.0

OD (in)	Wt (lb/ft)	Grade	Top (ftKB)	Btm (ftKB)	Len (ft)	Item Des
16	65.00	H-40	21.0	80.0	59.00	Casing Joints

OD (in)	Wt (lb/ft)	Grade	Top (ftKB)	Btm (ftKB)	Len (ft)	Item Des
9 5/8	36.00	J-55	21.0	21.0	0.00	Landing Joint
9 5/8	36.00	J-55	21.0	28.0	7.00	Well head pup joint
9 5/8	36.00	J-55	28.0	1,542.9	1,514.87	Casing Joints
9 5/8	36.00	J-55	1,542.9	1,544.4	1.50	Float Collar
9 5/8	36.00	J-55	1,544.4	1,585.5	41.12	Casing Joints
9 5/8	36.00	J-55	1,585.5	1,587.5	2.00	Float Shoe

OD (in)	Wt (lb/ft)	Grade	Top (ftKB)	Btm (ftKB)	Len (ft)	Item Des
7	29.00	HCP-110	21.0	21.0	0.00	Landing Joint
7	29.00	HCP-110	21.0	28.0	7.00	Hanger
7	29.00	HCP-110	28.0	5,910.1	5,882.13	Casing Joints
7	29.00	HCP-110	5,910.1	5,911.6	1.50	Float Collar
7	29.00	HCP-110	5,911.6	5,955.6	43.96	Casing Joints
7	29.00	HCP-110	5,955.6	5,957.6	2.00	Float Shoe

OD (in)	Wt (lb/ft)	Grade	Top (ftKB)	Btm (ftKB)	Len (ft)	Item Des
4 1/2	11.60	P-110	5,035.5	5,035.5	0.00	Tie back sleeve
4 1/2	11.60	P-110	5,035.5	5,038.9	3.40	Liner top packer
4 1/2	11.60	P-110	5,038.9	5,044.6	5.71	Liner Hanger
4 1/2	11.60	P-110	5,044.6	5,045.3	0.67	Cross over sub
4 1/2	11.60	P-110	5,045.3	10,488.8	5,443.53	Casing Joints
4 1/2	11.60	P-110	10,488.8	10,493.9	5.10	Pup Joint
4 1/2	11.60	P-110	10,493.9	10,498.9	5.01	Gen 2 wet shoe sub
4 1/2	11.60	P-110	10,498.9	10,500.5	1.58	PLB landing collar
4 1/2	11.60	P-110	10,500.5	10,502.8	2.30	Float Collar
4 1/2	11.60	P-110	10,502.8	10,504.4	1.58	Float Shoe

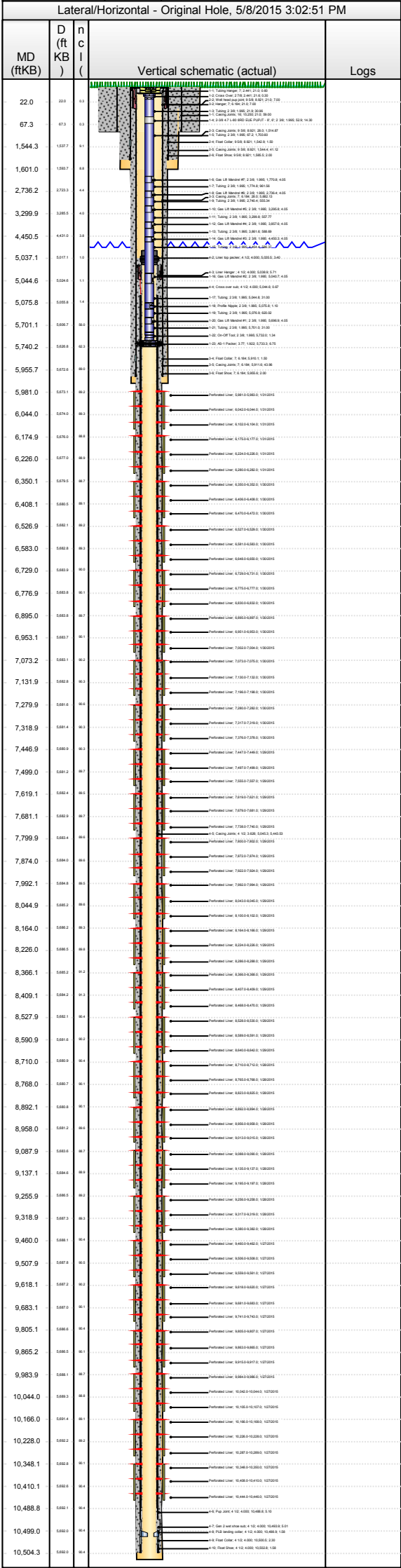
Des	Pump Start Date	Drill Out Date	Top (ftKB)	Btm (ftKB)	Top Meas Meth
Conductor Cement	10/30/2014		21.0	80.0	Returns to Surface
Surface Casing Cement	12/8/2014		21.0	1,587.5	Returns to Surface
Intermediate Casing Cement	12/11/2014		21.0	5,957.6	Returns to Surface
Liner Cement	12/13/2014		5,037.1	10,504.4	Returns to Surface

Type of Hole	Date	Top (ftKB)	Btm (ftKB)	Zone
Perforated Liner	1/31/2015	5,981.0	5,983.0	Niobrara, Original Hole
Perforated Liner	1/31/2015	6,042.0	6,044.0	Niobrara, Original Hole
Perforated Liner	1/31/2015	6,102.0	6,104.0	Niobrara, Original Hole
Perforated Liner	1/31/2015	6,175.0	6,177.0	Niobrara, Original Hole
Perforated Liner	1/31/2015	6,224.0	6,226.0	Niobrara, Original Hole
Perforated Liner	1/31/2015	6,280.0	6,282.0	Niobrara, Original Hole
Perforated Liner	1/30/2015	6,350.0	6,352.0	Niobrara, Original Hole
Perforated Liner	1/30/2015	6,406.0	6,408.0	Niobrara, Original Hole
Perforated Liner	1/30/2015	6,470.0	6,472.0	Niobrara, Original Hole
Perforated Liner	1/30/2015	6,527.0	6,529.0	Niobrara, Original Hole
Perforated Liner	1/30/2015	6,581.0	6,583.0	Niobrara, Original Hole
Perforated Liner	1/30/2015	6,648.0	6,650.0	Niobrara, Original Hole
Perforated Liner	1/30/2015	6,729.0	6,731.0	Niobrara, Original Hole
Perforated Liner	1/30/2015	6,775.0	6,777.0	Niobrara, Original Hole
Perforated Liner	1/30/2015	6,830.0	6,832.0	Niobrara, Original Hole
Perforated Liner	1/30/2015	6,895.0	6,897.0	Niobrara, Original Hole
Perforated Liner	1/30/2015	6,951.0	6,953.0	Niobrara, Original Hole
Perforated Liner	1/30/2015	7,002.0	7,004.0	Niobrara, Original Hole
Perforated Liner	1/30/2015	7,073.0	7,075.0	Niobrara, Original Hole
Perforated Liner	1/30/2015	7,130.0	7,132.0	Niobrara, Original Hole
Perforated Liner	1/30/2015	7,196.0	7,198.0	Niobrara, Original Hole
Perforated Liner	1/30/2015	7,280.0	7,282.0	Niobrara, Original Hole
Perforated Liner	1/30/2015	7,317.0	7,319.0	Niobrara, Original Hole



Lease Review  
Well Name: RAZOR 33P-3316

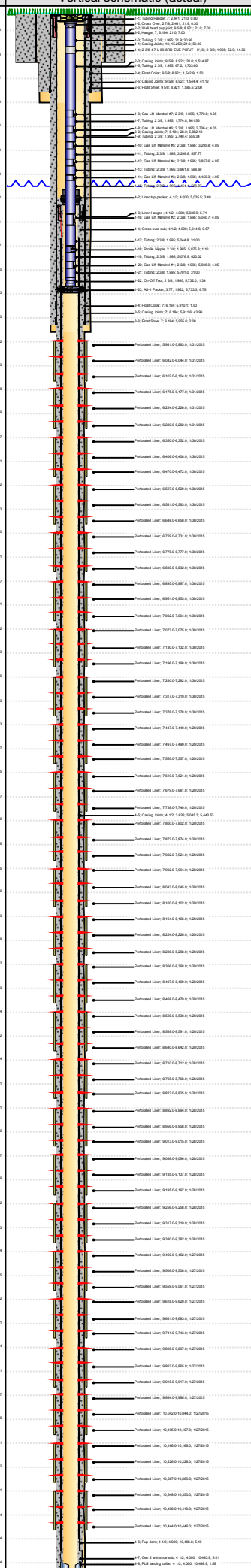
API Number 051234022000		WPC ID 1CO0761107			Well Permit Number			Field Name DJ Horizontal Niobrara				County Weld			State CO	
Well Configuration Type Lateral/Horizontal					Orig KB Elv (ft) 4,730.00		Ground Elevation (ft) 4,709.00		Casing Flange Elevation (ft)		Tubing Head Elevation (ft)			Total Depth (ftKB) 10,510.0		
Original Spud Date 12/8/2014		Completion Date 1/31/2015		Asset Group Redtail			Responsible Engineer Charles Ohlson			N/S Dist (ft) 330.0		N/S Ref FSL	E/W Dist (ft) 570.0		E/W Ref FEL	
Lot	Quarter 1 SE	Quarter 2 SE	Quarter 3	Quarter 4	Section 33	Section Suffix	Section Type	Township 10	Township N/S Dir N	Range 58	Range E/W Dir W	Meridian				



Perforations					
Type of Hole	Date	Top (ftKB)	Btm (ftKB)	Zone	
Perforated Liner	1/30/2015	7,376.0	7,378.0	Niobrara, Original Hole	
Perforated Liner	1/29/2015	7,447.0	7,449.0	Niobrara, Original Hole	
Perforated Liner	1/29/2015	7,497.0	7,499.0	Niobrara, Original Hole	
Perforated Liner	1/29/2015	7,555.0	7,557.0	Niobrara, Original Hole	
Perforated Liner	1/29/2015	7,619.0	7,621.0	Niobrara, Original Hole	
Perforated Liner	1/29/2015	7,679.0	7,681.0	Niobrara, Original Hole	
Perforated Liner	1/29/2015	7,738.0	7,740.0	Niobrara, Original Hole	
Perforated Liner	1/29/2015	7,800.0	7,802.0	Niobrara, Original Hole	
Perforated Liner	1/29/2015	7,872.0	7,874.0	Niobrara, Original Hole	
Perforated Liner	1/29/2015	7,922.0	7,924.0	Niobrara, Original Hole	
Perforated Liner	1/29/2015	7,992.0	7,994.0	Niobrara, Original Hole	
Perforated Liner	1/29/2015	8,043.0	8,045.0	Niobrara, Original Hole	
Perforated Liner	1/29/2015	8,100.0	8,102.0	Niobrara, Original Hole	
Perforated Liner	1/29/2015	8,164.0	8,166.0	Niobrara, Original Hole	
Perforated Liner	1/29/2015	8,224.0	8,226.0	Niobrara, Original Hole	
Perforated Liner	1/29/2015	8,286.0	8,288.0	Niobrara, Original Hole	
Perforated Liner	1/29/2015	8,366.0	8,368.0	Niobrara, Original Hole	
Perforated Liner	1/29/2015	8,407.0	8,409.0	Niobrara, Original Hole	
Perforated Liner	1/29/2015	8,468.0	8,470.0	Niobrara, Original Hole	
Perforated Liner	1/29/2015	8,528.0	8,530.0	Niobrara, Original Hole	
Perforated Liner	1/29/2015	8,589.0	8,591.0	Niobrara, Original Hole	
Perforated Liner	1/29/2015	8,640.0	8,642.0	Niobrara, Original Hole	
Perforated Liner	1/28/2015	8,710.0	8,712.0	Niobrara, Original Hole	
Perforated Liner	1/28/2015	8,765.0	8,768.0	Niobrara, Original Hole	
Perforated Liner	1/28/2015	8,823.0	8,825.0	Niobrara, Original Hole	
Perforated Liner	1/28/2015	8,892.0	8,894.0	Niobrara, Original Hole	
Perforated Liner	1/28/2015	8,956.0	8,958.0	Niobrara, Original Hole	
Perforated Liner	1/28/2015	9,013.0	9,015.0	Niobrara, Original Hole	
Perforated Liner	1/28/2015	9,088.0	9,090.0	Niobrara, Original Hole	
Perforated Liner	1/28/2015	9,135.0	9,137.0	Niobrara, Original Hole	
Perforated Liner	1/28/2015	9,195.0	9,197.0	Niobrara, Original Hole	
Perforated Liner	1/28/2015	9,256.0	9,258.0	Niobrara, Original Hole	
Perforated Liner	1/28/2015	9,317.0	9,319.0	Niobrara, Original Hole	
Perforated Liner	1/28/2015	9,380.0	9,382.0	Niobrara, Original Hole	
Perforated Liner	1/27/2015	9,460.0	9,462.0	Niobrara, Original Hole	
Perforated Liner	1/27/2015	9,506.0	9,508.0	Niobrara, Original Hole	
Perforated Liner	1/27/2015	9,559.0	9,561.0	Niobrara, Original Hole	
Perforated Liner	1/27/2015	9,618.0	9,620.0	Niobrara, Original Hole	
Perforated Liner	1/27/2015	9,681.0	9,683.0	Niobrara, Original Hole	
Perforated Liner	1/27/2015	9,741.0	9,743.0	Niobrara, Original Hole	
Perforated Liner	1/27/2015	9,805.0	9,807.0	Niobrara, Original Hole	
Perforated Liner	1/27/2015	9,863.0	9,865.0	Niobrara, Original Hole	
Perforated Liner	1/27/2015	9,915.0	9,917.0	Niobrara, Original Hole	
Perforated Liner	1/27/2015	9,984.0	9,986.0	Niobrara, Original Hole	
Perforated Liner	1/27/2015	10,042.0	10,044.0	Niobrara, Original Hole	
Perforated Liner	1/27/2015	10,105.0	10,107.0	Niobrara, Original Hole	
Perforated Liner	1/27/2015	10,166.0	10,168.0	Niobrara, Original Hole	
Perforated Liner	1/27/2015	10,226.0	10,228.0	Niobrara, Original Hole	
Perforated Liner	1/27/2015	10,287.0	10,289.0	Niobrara, Original Hole	
Perforated Liner	1/27/2015	10,348.0	10,350.0	Niobrara, Original Hole	
Perforated Liner	1/27/2015	10,408.0	10,410.0	Niobrara, Original Hole	
Perforated Liner	1/27/2015	10,444.0	10,446.0	Niobrara, Original Hole	
Sand Frac on 1/27/2015 06:00					
Comment Treatment End Date: 1/30/2015; Number of staged intervals: 25; Min Frac Gradient: .80; # of Perfs: 900; SlickWater: 111417 bbl; 15% HCL: 381 bbl			Min Top... 5,981.0	Max Btm D... 10,446.0	Total Add Amount Proppant 30/50 Ottawa 2425963 lb; Proppant 40/70 Ottawa 72769 lb
					Frac Len...
Stim/Treat Fluids					
Slickwater, 15% HCL, <fluidtyp>					
Proppant Frm (lb) 2,498,732.0	Total Clean Vol... 114838.96	Avg Treat Rate... 70.10	Max Treat Rate... 72.20	Avg Treat Press... 5,135.0	P Max (psi) 8,298.0
					Frac Gradient (p... 0.82
Slickwater, <fluidtyp>					
Proppant Frm (lb) 2,498,732.0	Total Clean Vol... 114838.96	Avg Treat Rate... 70.10	Max Treat Rate... 72.20	Avg Treat Press... 5,135.0	P Max (psi) 8,298.0
					Frac Gradient (p... 0.82
Stim/Treat Stages					
Stg # 1	Start Date 1/27/2015	Top Depth (ftKB) 10,348.0	Bottom Depth (ftKB) 10,446.0	Vol Clean Pump (bbl) 5712.67	Vol Slurry (bbl)
Additive Proppant	Type 30/50 Ottawa		Amount 83,713.0	Units lb	Sand Size 30/50
Additive Proppant	Type 40/70 Ottawa		Amount 2,166.0	Units lb	Sand Size 40/70
Stg # 2	Start Date 1/27/2015	Top Depth (ftKB) 10,166.0	Bottom Depth (ftKB) 10,289.0	Vol Clean Pump (bbl) 4637.10	Vol Slurry (bbl)



Lease Review  
Well Name: RAZOR 33P-3316

API Number 051234022000				WPC ID 1CO0761107				Well Permit Number				Field Name DJ Horizontal Niobrara				County Weld		State CO							
Well Configuration Type Lateral/Horizontal				Orig KB Elv (ft) 4,730.00				Ground Elevation (ft) 4,709.00				Casing Flange Elevation (ft)				Tubing Head Elevation (ft)				Total Depth (ftKB) 10,510.0					
Original Spud Date 12/8/2014				Completion Date 1/31/2015				Asset Group Retail				Responsible Engineer Charles Ohlson				N/S Dist (ft) 330.0				N/S Ref FSL		E/W Dist (ft) 570.0		E/W Ref FEL	
Lot		Quarter 1 SE		Quarter 2 SE		Quarter 3		Quarter 4		Section 33		Section Suffix		Section Type		Township 10 N		Township N/S Dir		Range 58 W		Meridian			
Lateral/Horizontal - Original Hole, 5/8/2015 3:02:51 PM																									
MD (ftKB)		D (ftKB)		n (ft)		c (ft)		l (ft)		Vertical schematic (actual)		Logs													
22.0		22.0		3.3																					
67.3		67.3		3.3																					
1,544.3		1,527.7		8.1																					
1,601.0		1,593.7		8.8																					
2,736.2		2,723.3		14.4																					
3,299.9		3,285.5		14.0																					
4,450.5		4,432.0		18.8																					
5,037.1		5,017.1		1.0																					
5,044.6		5,024.1		1.1																					
5,075.8		5,055.8		1.4																					
5,701.1		5,681.7		0.6																					
5,740.2		5,720.3		0.3																					
5,955.7		5,935.0		0.8																					
5,981.0		5,971.1		0.9																					
6,044.0		6,034.0		0.3																					
6,226.0		6,216.0		0.8																					
6,350.1		6,340.1		0.7																					
6,408.1		6,398.1		0.1																					
6,526.9		6,516.9		0.2																					
6,583.0		6,573.0		0.3																					
6,729.0		6,719.0		0.6																					
6,776.9		6,766.9		0.1																					
6,895.0		6,885.0		0.7																					
6,953.1		6,943.1		0.1																					
7,073.2		7,063.2		0.2																					
7,131.9		7,121.9		0.3																					
7,279.9		7,269.9		0.6																					
7,318.9		7,308.9		0.3																					
7,446.9		7,436.9		0.3																					
7,499.0		7,489.0		0.7																					
7,619.1		7,609.1		0.6																					
7,681.1		7,671.1		0.7																					
7,799.9		7,789.9		0.6																					
7,874.0		7,864.0		0.6																					
7,992.1		7,982.1		0.6																					
8,044.9		8,034.9		0.6																					
8,164.0		8,154.0		0.3																					
8,226.0		8,216.0		0.3																					
8,366.1		8,356.1		0.2																					
8,409.1		8,399.1		0.3																					
8,527.9		8,517.9		0.4																					
8,590.9		8,580.9		0.2																					
8,710.0		8,700.0		0.4																					
8,768.0		8,758.0		0.1																					
8,892.1		8,882.1		0.1																					
8,958.0		8,948.0		0.6																					
9,087.9		9,077.9		0.7																					
9,137.1		9,127.1		0.6																					
9,255.9		9,245.9		0.2																					
9,318.9		9,308.9		0.2																					
9,460.0		9,450.0		0.4																					
9,507.9		9,497.9		0.6																					
9,618.1		9,608.1		0.2																					
9,683.1		9,673.1		0.1																					
9,805.1		9,795.1		0.4																					
9,865.2		9,855.2		0.1																					
9,983.9		9,973.9		0.7																					
10,044.0		10,034.0		0.4																					
10,166.0		10,156.0		0.1																					
10,228.0		10,218.0		0.2																					
10,348.1		10,338.1		0.1																					
10,410.1		10,400.1		0.4																					
10,488.8		10,478.8		0.4																					
10,499.0		10,489.0		0.2																					
10,504.3		10,494.3		0.4																					
Additive Proppant										Type 30/50 Ottawa				Amount 90,675.0				Units lb		Sand Size 30/50					
Additive Proppant										Type 40/70 Ottawa				Amount 2,665.0				Units lb		Sand Size 40/70					
Stg #		Start Date				Top Depth (ftKB)				Bottom Depth (ftKB)				Vol Clean Pump (bbl)				Vol Slurry (bbl)							
3		1/27/2015				9,984.0				10,107.0				4597.26											
Additive Proppant										Type 30/50 Ottawa				Amount 96,628.0				Units lb		Sand Size 30/50					
Additive Proppant										Type 40/70 Ottawa				Amount 2,813.0				Units lb		Sand Size 40/70					
Stg #		Start Date				Top Depth (ftKB)				Bottom Depth (ftKB)				Vol Clean Pump (bbl)				Vol Slurry (bbl)							
4		1/27/2015				9,805.0				9,917.0				4710.14											
Additive Proppant										Type 30/50 Ottawa				Amount 104,861.0				Units lb		Sand Size 30/50					
Additive Proppant										Type 40/70 Ottawa				Amount 2,935.0				Units lb		Sand Size 40/70					
Stg #		Start Date				Top Depth (ftKB)				Bottom Depth (ftKB)				Vol Clean Pump (bbl)				Vol Slurry (bbl)							
5		1/27/2015				9,618.0				9,743.0				4658.02											
Additive Proppant										Type 30/50 Ottawa				Amount 103,754.0				Units lb		Sand Size 30/50					
Additive Proppant										Type 40/70 Ottawa				Amount 2,931.0				Units lb		Sand Size 40/70					
Stg #		Start Date				Top Depth (ftKB)				Bottom Depth (ftKB)				Vol Clean Pump (bbl)				Vol Slurry (bbl)							
6		1/27/2015				9,460.0				9,561.0				4745.95											
Additive Proppant										Type 30/50 Ottawa				Amount 106,742.0				Units lb		Sand Size 30/50					
Additive Proppant										Type 40/70 Ottawa				Amount 3,069.0				Units lb		Sand Size 40/70					
Stg #		Start Date				Top Depth (ftKB)				Bottom Depth (ftKB)				Vol Clean Pump (bbl)				Vol Slurry (bbl)							
7		1/28/2015				9,256.0				9,382.0				4646.57											
Additive Proppant										Type 30/50 Ottawa				Amount 106,193.0				Units lb		Sand Size 30/50					
Additive Proppant										Type 40/70 Ottawa				Amount 3,430.0				Units lb		Sand Size 40/70					
Stg #		Start Date				Top Depth (ftKB)				Bottom Depth (ftKB)				Vol Clean Pump (bbl)				Vol Slurry (bbl)							
8		1/28/2015				9,088.0				9,197.0				4578.24											
Additive Proppant										Type 30/50 Ottawa				Amount 103,126.0				Units lb		Sand Size 30/50					
Additive Proppant										Type 40/70 Ottawa				Amount 3,440.0				Units lb		Sand Size 40/70					
Stg #		Start Date				Top Depth (ftKB)				Bottom Depth (ftKB)				Vol Clean Pump (bbl)				Vol Slurry (bbl)							
9		1/28/2015				8,892.0				9,015.0				4714.50											
Additive Proppant										Type 30/50 Ottawa				Amount 105,385.0				Units lb		Sand Size 30/50					
Additive Proppant										Type 40/70 Ottawa				Amount 3,273.0				Units lb		Sand Size 40/70					
Stg #		Start Date				Top Depth (ftKB)				Bottom Depth (ftKB)				Vol Clean Pump (bbl)				Vol Slurry (bbl)							
10		1/28/2015				8,710.0				8,825.0				4672.22											
Additive Proppant										Type 30/50 Ottawa				Amount 104,519.0				Units lb		Sand Size 30/50					
Additive Proppant										Type 40/70 Ottawa				Amount 3,155.0				Units lb		Sand Size 40/70					
Stg #		Start Date				Top Depth (ftKB)				Bottom Depth (ftKB)				Vol Clean Pump (bbl)				Vol Slurry (bbl)							
11		1/29/2015				8,528.0				8,642.0				4428.55											
Additive Proppant										Type 30/50 Ottawa				Amount 93,876.0				Units lb		Sand Size 30/50					
Additive Proppant										Type 40/70 Ottawa				Amount 3,219.0				Units lb		Sand Size 40/70					
Stg #		Start Date				Top Depth (ftKB)				Bottom Depth (ftKB)				Vol Clean Pump (bbl)				Vol Slurry (bbl)							
12		1/29/2015				8,366.0				8,470.0				4511.16											
Additive Proppant										Type 30/50 Ottawa				Amount 100,837.0				Units lb		Sand Size 30/50					
Additive Proppant										Type 40/70 Ottawa				Amount 3,072.0				Units lb		Sand Size 40/70					
Stg #		Start Date				Top Depth (ftKB)				Bottom Depth (ftKB)				Vol Clean Pump (bbl)				Vol Slurry (bbl)							
13		1/29/2015				8,164.0				8,288.0				4231.99											
Additive Proppant										Type 30/50 Ottawa				Amount 96,198.0				Units lb		Sand Size 30/50					
Additive Proppant										Type 40/70 Ottawa				Amount 2,554.0				Units lb		Sand Size 40/70					
Stg #		Start Date				Top Depth (ftKB)				Bottom Depth (ftKB)				Vol Clean Pump (bbl)				Vol Slurry (bbl)							
14		1/29/2015				7,992.0				8,102.0				4504.81											
Additive Proppant										Type 30/50 Ottawa				Amount 105,209.0				Units lb		Sand Size 30/50					
Additive Proppant										Type 40/70 Ottawa				Amount 3,068.0				Units lb		Sand Size 40/70					
Stg #		Start Date				Top Depth (ftKB)				Bottom Depth (ftKB)				Vol Clean Pump (bbl)				Vol Slurry (bbl)							
15		1/29/2015				7,800.0				7,924.0				4206.45											
Additive Proppant										Type 30/50 Ottawa				Amount 84,113.0				Units lb		Sand Size 30/50					
Additive Proppant										Type 40/70 Ottawa				Amount 3,220.0				Units lb		Sand Size 40/70					
Stg #		Start Date				Top Depth (ftKB)				Bottom Depth (ftKB)				Vol Clean Pump (bbl)				Vol Slurry (bbl)							
16		1/29/2015				7,619.0				7,740.0				4494.31											
Additive Proppant										Type 30/50 Ottawa				Amount 92,776.0				Units lb		Sand Size 30/50					
Additive Proppant										Type 40/70 Ottawa				Amount 3,082.0				Units lb		Sand Size 40/70					
Stg #		Start Date				Top Depth (ftKB)				Bottom Depth (ftKB)				Vol Clean Pump (bbl)				Vol Slurry (bbl)							
17		1/29/2015				7,447.0				7,557.0				4371.19											
Additive Proppant										Type 30/50 Ottawa				Amount 89,206.0				Units lb		Sand Size 30/50					
Additive Proppant										Type 40/70 Ottawa				Amount 2,968.0				Units lb		Sand Size 40/70					
Stg #		Start Date				Top Depth (ftKB)				Bottom Depth (ftKB)				Vol Clean Pump (bbl)				Vol Slurry (bbl)							
18		1/30/2015				7,280.0				7,378.0				4514.08											





Lease Review  
Well Name: RAZOR 33P-3316

API Number 051234022000				WPC ID 1CO0761107				Well Permit Number				Field Name DJ Horizontal Niobrara				County Weld		State CO					
Well Configuration Type Lateral/Horizontal				Orig KB Elv (ft) 4,730.00				Ground Elevation (ft) 4,709.00				Casing Flange Elevation (ft)				Tubing Head Elevation (ft)		Total Depth (ftKB) 10,510.0					
Original Spud Date 12/8/2014				Completion Date 1/31/2015				Asset Group Retail				Responsible Engineer Charles Ohlson				N/S Dist (ft) 330.0		N/S Ref FSL		E/W Dist (ft) 570.0		E/W Ref FEL	
Lot		Quarter 1 SE		Quarter 2 SE		Quarter 3		Quarter 4		Section 33		Section Suffix		Section Type		Township 10 N		Township N/S Dir		Range 58 W		Meridian	
Lateral/Horizontal - Original Hole, 5/8/2015 3:02:51 PM																							
MD (ftKB)		D (ft KB)		n (in)		c (in)		l (in)		Vertical schematic (actual)		Logs											
22.0		22.0		3.3																			

Page 5/5