

Great Western

Well Name: **Taoka KF 01-040HN**

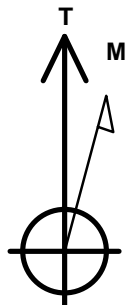
Surface Location: Taoka East Pad Sec.1-T1N-R65W
North American Datum 1983 , US State Plane 1983 , Colorado Northern Zone

Ground Elevation: 4955.9

+N/-S	+E/-W	Northing	Easting	Latitude	Longitude	Slot
0.0	0.0	1271007.56	3250367.71	40.073839	-104.605336	
RKB - 16.5' WELL @ 4972.4ft (RKB - 16.5')						

WELLBORE TARGET DETAILS

Name	TVD	+N/-S	+E/-W	Shape
SHL 224'FSL & 748'FEL	1.0	0.0	0.0	Point
BHL 470'FNL & 1'FEL	6962.4	4475.7	743.7	Point
Entry Pt. 460'FSL & 1'FEL	6962.4	235.7	746.4	Point



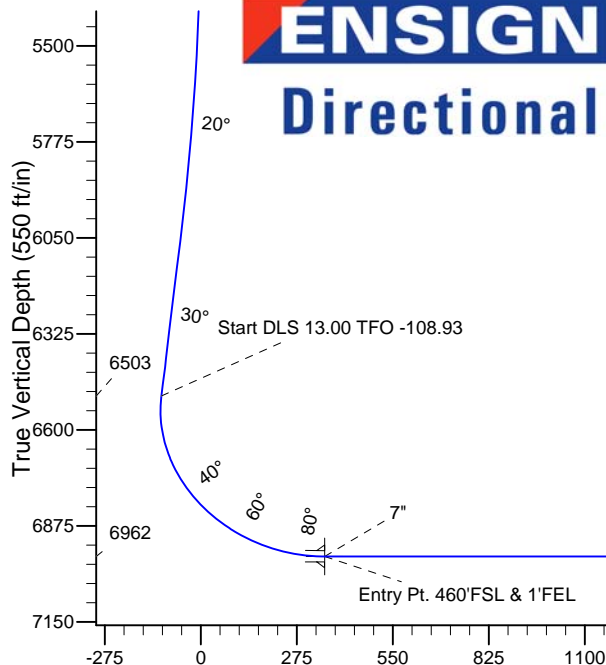
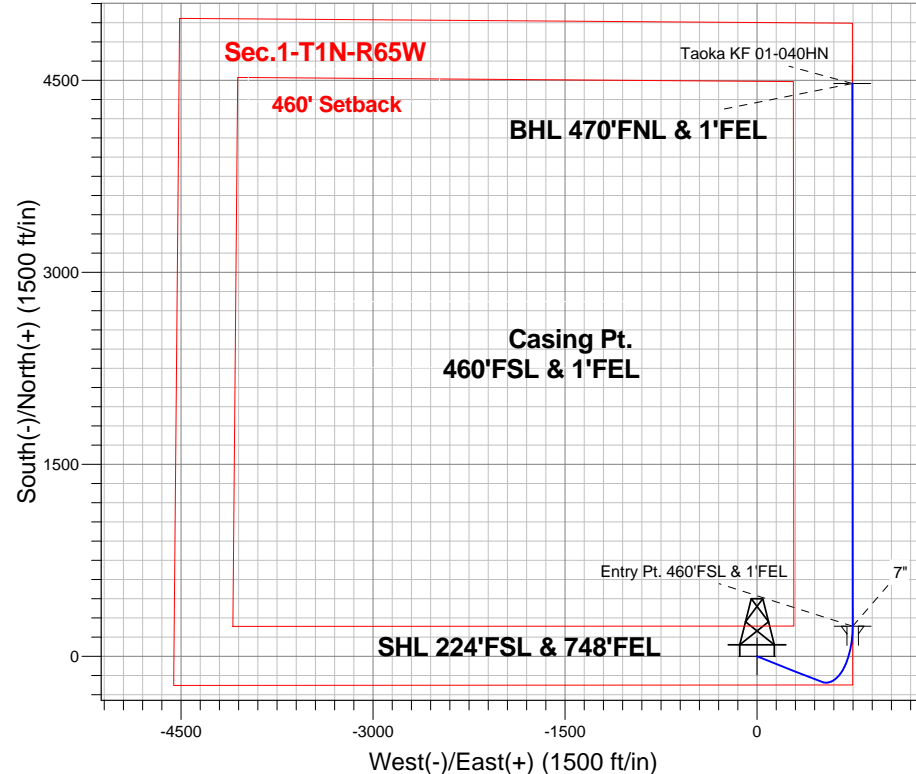
Azimuths to True North
Magnetic North: 8.42°

Magnetic Field
Strength: 52719.9snT
Dip Angle: 66.73°
Date: 11/18/2013
Model: IGRF2010

Taoka East Pad Sec.1-T1N-R65W
Taoka KF 01-040HN
Plan #1 (11-18-13)
13:37, November 20 2013

ANNOTATIONS

TVD	MD	Annotation
5060.0	5060.0	KOP - Start Build 3.00
6502.6	6623.1	Start DLS 13.00 TFO -108.93
6962.4	11637.0	TD at 11637.0



SECTION DETAILS

Sec	MD	Inc	Azi	TVD	+N/-S	+E/-W	DLeg	TFace	VSec	Target
1	0.0	0.00	0.00	0.0	0.0	0.0	0.00	0.00	0.0	
2	5060.0	0.00	0.00	5060.0	0.0	0.0	0.00	0.00	0.0	
3	6060.0	30.00	111.57	6014.9	-94.1	238.0	3.00	111.57	-53.8	
4	6623.1	30.00	111.57	6502.6	-197.6	499.8	0.00	0.00	-113.0	
5	7397.0	90.00	359.97	6962.4	235.7	746.4	13.00	-108.93	354.9	Entry Pt. 460'FSL & 1'FEL
6	7397.6	90.00	359.96	6962.4	236.3	746.4	1.00	-90.00	355.5	
7	11637.0	90.00	359.96	6962.4	4475.7	743.7	0.00	0.00	4537.1	BHL 470'FNL & 1'FEL

Vertical Section at 9.43° (550 ft/in)



Great Western

SEC.1-T1N-R65W

Taoka East Pad Sec.1-T1N-R65W

Taoka KF 01-040HN

Wellbore #1

Plan: Plan #1 (11-18-13)

Standard Planning Report

20 November, 2013

Plan Sections										
Measured Depth (ft)	Inclination (°)	Azimuth (°)	Vertical Depth (ft)	+N/-S (ft)	+E/-W (ft)	Dogleg Rate (°/100ft)	Build Rate (°/100ft)	Turn Rate (°/100ft)	TFO (°)	Target
0.0	0.00	0.00	0.0	0.0	0.0	0.00	0.00	0.00	0.00	
5,060.0	0.00	0.00	5,060.0	0.0	0.0	0.00	0.00	0.00	0.00	
6,060.0	30.00	111.57	6,014.9	-94.1	238.0	3.00	3.00	0.00	111.57	
6,623.1	30.00	111.57	6,502.6	-197.6	499.8	0.00	0.00	0.00	0.00	
7,397.0	90.00	359.97	6,962.4	235.7	746.4	13.00	7.75	-14.42	-108.93	Entry Pt. 460'FSL &
7,397.6	90.00	359.96	6,962.4	236.3	746.4	1.00	0.00	-1.00	-90.00	
11,637.0	90.00	359.96	6,962.4	4,475.7	743.7	0.00	0.00	0.00	0.00	BHL 470'FNL & 1'F

Database:	Landmark	Local Co-ordinate Reference:	Well Taoka KF 01-040HN
Company:	Great Western	TVD Reference:	WELL @ 4972.4ft (RKB - 16.5')
Project:	SEC.1-T1N-R65W	MD Reference:	WELL @ 4972.4ft (RKB - 16.5')
Site:	Taoka East Pad Sec.1-T1N-R65W	North Reference:	True
Well:	Taoka KF 01-040HN	Survey Calculation Method:	Minimum Curvature
Wellbore:	Wellbore #1		
Design:	Plan #1 (11-18-13)		

Planned Survey									
Measured Depth (ft)	Inclination (°)	Azimuth (°)	Vertical Depth (ft)	+N/-S (ft)	+E/-W (ft)	Vertical Section (ft)	Dogleg Rate (°/100ft)	Build Rate (°/100ft)	Turn Rate (°/100ft)
0.0	0.00	0.00	0.0	0.0	0.0	0.0	0.00	0.00	0.00
1.0	0.00	0.00	1.0	0.0	0.0	0.0	0.00	0.00	0.00
SHL 224'FSL & 748'FEL									
100.0	0.00	0.00	100.0	0.0	0.0	0.0	0.00	0.00	0.00
200.0	0.00	0.00	200.0	0.0	0.0	0.0	0.00	0.00	0.00
300.0	0.00	0.00	300.0	0.0	0.0	0.0	0.00	0.00	0.00
400.0	0.00	0.00	400.0	0.0	0.0	0.0	0.00	0.00	0.00
500.0	0.00	0.00	500.0	0.0	0.0	0.0	0.00	0.00	0.00
600.0	0.00	0.00	600.0	0.0	0.0	0.0	0.00	0.00	0.00
700.0	0.00	0.00	700.0	0.0	0.0	0.0	0.00	0.00	0.00
800.0	0.00	0.00	800.0	0.0	0.0	0.0	0.00	0.00	0.00
900.0	0.00	0.00	900.0	0.0	0.0	0.0	0.00	0.00	0.00
1,000.0	0.00	0.00	1,000.0	0.0	0.0	0.0	0.00	0.00	0.00
1,100.0	0.00	0.00	1,100.0	0.0	0.0	0.0	0.00	0.00	0.00
1,200.0	0.00	0.00	1,200.0	0.0	0.0	0.0	0.00	0.00	0.00
1,300.0	0.00	0.00	1,300.0	0.0	0.0	0.0	0.00	0.00	0.00
1,400.0	0.00	0.00	1,400.0	0.0	0.0	0.0	0.00	0.00	0.00
1,500.0	0.00	0.00	1,500.0	0.0	0.0	0.0	0.00	0.00	0.00
1,600.0	0.00	0.00	1,600.0	0.0	0.0	0.0	0.00	0.00	0.00
1,700.0	0.00	0.00	1,700.0	0.0	0.0	0.0	0.00	0.00	0.00
1,800.0	0.00	0.00	1,800.0	0.0	0.0	0.0	0.00	0.00	0.00
1,900.0	0.00	0.00	1,900.0	0.0	0.0	0.0	0.00	0.00	0.00
2,000.0	0.00	0.00	2,000.0	0.0	0.0	0.0	0.00	0.00	0.00
2,100.0	0.00	0.00	2,100.0	0.0	0.0	0.0	0.00	0.00	0.00
2,200.0	0.00	0.00	2,200.0	0.0	0.0	0.0	0.00	0.00	0.00
2,300.0	0.00	0.00	2,300.0	0.0	0.0	0.0	0.00	0.00	0.00
2,400.0	0.00	0.00	2,400.0	0.0	0.0	0.0	0.00	0.00	0.00
2,500.0	0.00	0.00	2,500.0	0.0	0.0	0.0	0.00	0.00	0.00
2,600.0	0.00	0.00	2,600.0	0.0	0.0	0.0	0.00	0.00	0.00
2,700.0	0.00	0.00	2,700.0	0.0	0.0	0.0	0.00	0.00	0.00
2,800.0	0.00	0.00	2,800.0	0.0	0.0	0.0	0.00	0.00	0.00
2,900.0	0.00	0.00	2,900.0	0.0	0.0	0.0	0.00	0.00	0.00
3,000.0	0.00	0.00	3,000.0	0.0	0.0	0.0	0.00	0.00	0.00
3,100.0	0.00	0.00	3,100.0	0.0	0.0	0.0	0.00	0.00	0.00
3,200.0	0.00	0.00	3,200.0	0.0	0.0	0.0	0.00	0.00	0.00
3,300.0	0.00	0.00	3,300.0	0.0	0.0	0.0	0.00	0.00	0.00
3,400.0	0.00	0.00	3,400.0	0.0	0.0	0.0	0.00	0.00	0.00
3,500.0	0.00	0.00	3,500.0	0.0	0.0	0.0	0.00	0.00	0.00
3,600.0	0.00	0.00	3,600.0	0.0	0.0	0.0	0.00	0.00	0.00
3,700.0	0.00	0.00	3,700.0	0.0	0.0	0.0	0.00	0.00	0.00
3,800.0	0.00	0.00	3,800.0	0.0	0.0	0.0	0.00	0.00	0.00
3,900.0	0.00	0.00	3,900.0	0.0	0.0	0.0	0.00	0.00	0.00
4,000.0	0.00	0.00	4,000.0	0.0	0.0	0.0	0.00	0.00	0.00
4,100.0	0.00	0.00	4,100.0	0.0	0.0	0.0	0.00	0.00	0.00
4,200.0	0.00	0.00	4,200.0	0.0	0.0	0.0	0.00	0.00	0.00
4,300.0	0.00	0.00	4,300.0	0.0	0.0	0.0	0.00	0.00	0.00
4,400.0	0.00	0.00	4,400.0	0.0	0.0	0.0	0.00	0.00	0.00
4,500.0	0.00	0.00	4,500.0	0.0	0.0	0.0	0.00	0.00	0.00
4,600.0	0.00	0.00	4,600.0	0.0	0.0	0.0	0.00	0.00	0.00
4,700.0	0.00	0.00	4,700.0	0.0	0.0	0.0	0.00	0.00	0.00
4,800.0	0.00	0.00	4,800.0	0.0	0.0	0.0	0.00	0.00	0.00
4,900.0	0.00	0.00	4,900.0	0.0	0.0	0.0	0.00	0.00	0.00
5,000.0	0.00	0.00	5,000.0	0.0	0.0	0.0	0.00	0.00	0.00
5,060.0	0.00	0.00	5,060.0	0.0	0.0	0.0	0.00	0.00	0.00

Database:	Landmark	Local Co-ordinate Reference:	Well Taoka KF 01-040HN
Company:	Great Western	TVD Reference:	WELL @ 4972.4ft (RKB - 16.5')
Project:	SEC.1-T1N-R65W	MD Reference:	WELL @ 4972.4ft (RKB - 16.5')
Site:	Taoka East Pad Sec.1-T1N-R65W	North Reference:	True
Well:	Taoka KF 01-040HN	Survey Calculation Method:	Minimum Curvature
Wellbore:	Wellbore #1		
Design:	Plan #1 (11-18-13)		

Planned Survey									
Measured Depth (ft)	Inclination (°)	Azimuth (°)	Vertical Depth (ft)	+N/-S (ft)	+E/-W (ft)	Vertical Section (ft)	Dogleg Rate (°/100ft)	Build Rate (°/100ft)	Turn Rate (°/100ft)
KOP - Start Build 3.00									
5,100.0	1.20	111.57	5,100.0	-0.2	0.4	-0.1	3.00	3.00	0.00
5,200.0	4.20	111.57	5,199.9	-1.9	4.8	-1.1	3.00	3.00	0.00
5,300.0	7.20	111.57	5,299.4	-5.5	14.0	-3.2	3.00	3.00	0.00
5,400.0	10.20	111.57	5,398.2	-11.1	28.1	-6.3	3.00	3.00	0.00
5,500.0	13.20	111.57	5,496.1	-18.6	46.9	-10.6	3.00	3.00	0.00
5,600.0	16.20	111.57	5,592.8	-27.9	70.5	-15.9	3.00	3.00	0.00
5,700.0	19.20	111.57	5,688.1	-39.1	98.8	-22.3	3.00	3.00	0.00
5,800.0	22.20	111.57	5,781.6	-52.1	131.7	-29.8	3.00	3.00	0.00
5,900.0	25.20	111.57	5,873.2	-66.8	169.0	-38.2	3.00	3.00	0.00
6,000.0	28.20	111.57	5,962.5	-83.4	210.8	-47.7	3.00	3.00	0.00
6,060.0	30.00	111.57	6,014.9	-94.1	238.0	-53.8	3.00	3.00	0.00
6,100.0	30.00	111.57	6,049.6	-101.4	256.5	-58.0	0.00	0.00	0.00
6,200.0	30.00	111.57	6,136.2	-119.8	303.0	-68.5	0.00	0.00	0.00
6,300.0	30.00	111.57	6,222.8	-138.2	349.5	-79.0	0.00	0.00	0.00
6,400.0	30.00	111.57	6,309.4	-156.6	396.0	-89.5	0.00	0.00	0.00
6,500.0	30.00	111.57	6,396.0	-175.0	442.5	-100.1	0.00	0.00	0.00
6,600.0	30.00	111.57	6,482.6	-193.4	489.0	-110.6	0.00	0.00	0.00
6,623.1	30.00	111.57	6,502.6	-197.6	499.8	-113.0	0.00	0.00	0.00
Start DLS 13.00 TFO -108.93									
6,700.0	28.23	91.26	6,569.9	-205.1	535.9	-114.5	13.00	-2.30	-26.41
6,800.0	30.62	65.06	6,657.4	-194.8	582.9	-96.6	13.00	2.39	-26.20
6,900.0	37.25	44.87	6,740.6	-162.5	627.5	-57.4	13.00	6.63	-20.19
7,000.0	46.32	30.81	6,815.2	-109.8	667.6	1.1	13.00	9.07	-14.07
7,100.0	56.64	20.66	6,877.5	-39.3	701.0	76.1	13.00	10.32	-10.14
7,200.0	67.61	12.74	6,924.2	45.2	726.0	163.6	13.00	10.97	-7.92
7,300.0	78.91	6.01	6,953.0	139.5	741.4	259.1	13.00	11.30	-6.73
7,397.0	90.00	359.97	6,962.4	235.7	746.4	354.9	13.00	11.43	-6.23
7" - Entry Pt. 460'FSL & 1'FEL									
7,397.6	90.00	359.96	6,962.4	236.3	746.4	355.5	1.16	0.25	-1.14
7,400.0	90.00	359.96	6,962.4	238.7	746.4	357.8	0.00	0.00	0.00
7,500.0	90.00	359.96	6,962.4	338.7	746.3	456.5	0.00	0.00	0.00
7,600.0	90.00	359.96	6,962.4	438.7	746.3	555.1	0.00	0.00	0.00
7,700.0	90.00	359.96	6,962.4	538.7	746.2	653.7	0.00	0.00	0.00
7,800.0	90.00	359.96	6,962.4	638.7	746.1	752.4	0.00	0.00	0.00
7,900.0	90.00	359.96	6,962.4	738.7	746.1	851.0	0.00	0.00	0.00
8,000.0	90.00	359.96	6,962.4	838.7	746.0	949.7	0.00	0.00	0.00
8,100.0	90.00	359.96	6,962.4	938.7	745.9	1,048.3	0.00	0.00	0.00
8,200.0	90.00	359.96	6,962.4	1,038.7	745.9	1,146.9	0.00	0.00	0.00
8,300.0	90.00	359.96	6,962.4	1,138.7	745.8	1,245.6	0.00	0.00	0.00
8,400.0	90.00	359.96	6,962.4	1,238.7	745.8	1,344.2	0.00	0.00	0.00
8,500.0	90.00	359.96	6,962.4	1,338.7	745.7	1,442.8	0.00	0.00	0.00
8,600.0	90.00	359.96	6,962.4	1,438.7	745.6	1,541.5	0.00	0.00	0.00
8,700.0	90.00	359.96	6,962.4	1,538.7	745.6	1,640.1	0.00	0.00	0.00
8,800.0	90.00	359.96	6,962.4	1,638.7	745.5	1,738.8	0.00	0.00	0.00
8,900.0	90.00	359.96	6,962.4	1,738.7	745.4	1,837.4	0.00	0.00	0.00
9,000.0	90.00	359.96	6,962.4	1,838.7	745.4	1,936.0	0.00	0.00	0.00
9,100.0	90.00	359.96	6,962.4	1,938.7	745.3	2,034.7	0.00	0.00	0.00
9,200.0	90.00	359.96	6,962.4	2,038.7	745.3	2,133.3	0.00	0.00	0.00
9,300.0	90.00	359.96	6,962.4	2,138.7	745.2	2,231.9	0.00	0.00	0.00
9,400.0	90.00	359.96	6,962.4	2,238.7	745.1	2,330.6	0.00	0.00	0.00
9,500.0	90.00	359.96	6,962.4	2,338.7	745.1	2,429.2	0.00	0.00	0.00
9,600.0	90.00	359.96	6,962.4	2,438.7	745.0	2,527.9	0.00	0.00	0.00

Planned Survey										
Measured Depth (ft)	Inclination (°)	Azimuth (°)	Vertical Depth (ft)	+N-S (ft)	+E-W (ft)	Vertical Section (ft)	Dogleg Rate (°/100ft)	Build Rate (°/100ft)	Turn Rate (°/100ft)	
9,700.0	90.00	359.96	6,962.4	2,538.7	744.9	2,626.5	0.00	0.00	0.00	
9,800.0	90.00	359.96	6,962.4	2,638.7	744.9	2,725.1	0.00	0.00	0.00	
9,900.0	90.00	359.96	6,962.4	2,738.7	744.8	2,823.8	0.00	0.00	0.00	
10,000.0	90.00	359.96	6,962.4	2,838.7	744.8	2,922.4	0.00	0.00	0.00	
10,100.0	90.00	359.96	6,962.4	2,938.7	744.7	3,021.0	0.00	0.00	0.00	
10,200.0	90.00	359.96	6,962.4	3,038.7	744.6	3,119.7	0.00	0.00	0.00	
10,300.0	90.00	359.96	6,962.4	3,138.7	744.6	3,218.3	0.00	0.00	0.00	
10,400.0	90.00	359.96	6,962.4	3,238.7	744.5	3,316.9	0.00	0.00	0.00	
10,500.0	90.00	359.96	6,962.4	3,338.7	744.4	3,415.6	0.00	0.00	0.00	
10,600.0	90.00	359.96	6,962.4	3,438.7	744.4	3,514.2	0.00	0.00	0.00	
10,700.0	90.00	359.96	6,962.4	3,538.7	744.3	3,612.9	0.00	0.00	0.00	
10,800.0	90.00	359.96	6,962.4	3,638.7	744.3	3,711.5	0.00	0.00	0.00	
10,900.0	90.00	359.96	6,962.4	3,738.7	744.2	3,810.1	0.00	0.00	0.00	
11,000.0	90.00	359.96	6,962.4	3,838.7	744.1	3,908.8	0.00	0.00	0.00	
11,100.0	90.00	359.96	6,962.4	3,938.7	744.1	4,007.4	0.00	0.00	0.00	
11,200.0	90.00	359.96	6,962.4	4,038.7	744.0	4,106.0	0.00	0.00	0.00	
11,300.0	90.00	359.96	6,962.4	4,138.7	743.9	4,204.7	0.00	0.00	0.00	
11,400.0	90.00	359.96	6,962.4	4,238.7	743.9	4,303.3	0.00	0.00	0.00	
11,500.0	90.00	359.96	6,962.4	4,338.7	743.8	4,402.0	0.00	0.00	0.00	
11,600.0	90.00	359.96	6,962.4	4,438.7	743.8	4,500.6	0.00	0.00	0.00	
11,637.0	90.00	359.96	6,962.4	4,475.7	743.7	4,537.1	0.00	0.00	0.00	
TD at 11637.0 - BHL 470'FNL & 1'FEL										

Plan Annotations					
	Measured Depth (ft)	Vertical Depth (ft)	Local Coordinates		Comment
			+N/-S (ft)	+E/-W (ft)	
	5,060.0	5,060.0	0.0	0.0	KOP - Start Build 3.00
	6,623.1	6,502.6	-197.6	499.8	Start DLS 13.00 TFO -108.93
	11,637.0	6,962.4	4,475.7	743.7	TD at 11637.0



Great Western

SEC.1-T1N-R65W

Taoka East Pad Sec.1-T1N-R65W

Taoka KF 01-040HN

Wellbore #1

Plan #1 (11-18-13)

Anticollision Report

20 November, 2013

Company:	Great Western	Local Co-ordinate Reference:	Well Taoka KF 01-040HN
Project:	SEC.1-T1N-R65W	TVD Reference:	WELL @ 4972.4ft (RKB - 16.5')
Reference Site:	Taoka East Pad Sec.1-T1N-R65W	MD Reference:	WELL @ 4972.4ft (RKB - 16.5')
Site Error:	0.0ft	North Reference:	True
Reference Well:	Taoka KF 01-040HN	Survey Calculation Method:	Minimum Curvature
Well Error:	0.0ft	Output errors are at	2.00 sigma
Reference Wellbore	Wellbore #1	Database:	Landmark
Reference Design:	Plan #1 (11-18-13)	Offset TVD Reference:	Offset Datum

Offset Design													Offset Site Error:	0.0 ft
Survey Program: 0-MWD													Offset Well Error:	0.0 ft
Reference		Offset		Semi Major Axis			Distance							Warning
Measured Depth (ft)	Vertical Depth (ft)	Measured Depth (ft)	Vertical Depth (ft)	Reference (ft)	Offset (ft)	Highside Toolface (°)	Offset Wellbore Centre +N/-S (ft)	+E/-W (ft)	Between Centres (ft)	Between Ellipses (ft)	Minimum Separation (ft)	Separation Factor		
2,100.0	2,100.0	2,100.0	2,100.0	4.6	4.6	-90.02	0.0	-90.1	90.1	80.9	9.22	9.779		
2,200.0	2,200.0	2,200.0	2,200.0	4.8	4.8	-90.02	0.0	-90.1	90.1	80.5	9.66	9.324		
2,300.0	2,300.0	2,300.0	2,300.0	5.1	5.1	-90.02	0.0	-90.1	90.1	80.0	10.11	8.910		
2,400.0	2,400.0	2,400.0	2,400.0	5.3	5.3	-90.02	0.0	-90.1	90.1	79.6	10.56	8.530		
2,500.0	2,500.0	2,500.0	2,500.0	5.5	5.5	-90.02	0.0	-90.1	90.1	79.1	11.01	8.182		
2,600.0	2,600.0	2,600.0	2,600.0	5.7	5.7	-90.02	0.0	-90.1	90.1	78.7	11.46	7.861		
2,700.0	2,700.0	2,700.0	2,700.0	6.0	6.0	-90.02	0.0	-90.1	90.1	78.2	11.91	7.565		
2,800.0	2,800.0	2,800.0	2,800.0	6.2	6.2	-90.02	0.0	-90.1	90.1	77.8	12.36	7.290		
2,900.0	2,900.0	2,900.0	2,900.0	6.4	6.4	-90.02	0.0	-90.1	90.1	77.3	12.81	7.034		
3,000.0	3,000.0	3,000.0	3,000.0	6.6	6.6	-90.02	0.0	-90.1	90.1	76.9	13.26	6.795		
3,100.0	3,100.0	3,100.0	3,100.0	6.9	6.9	-90.02	0.0	-90.1	90.1	76.4	13.71	6.573		
3,200.0	3,200.0	3,200.0	3,200.0	7.1	7.1	-90.02	0.0	-90.1	90.1	76.0	14.16	6.364		
3,300.0	3,300.0	3,300.0	3,300.0	7.3	7.3	-90.02	0.0	-90.1	90.1	75.5	14.61	6.168		
3,400.0	3,400.0	3,400.0	3,400.0	7.5	7.5	-90.02	0.0	-90.1	90.1	75.1	15.06	5.984		
3,500.0	3,500.0	3,500.0	3,500.0	7.8	7.8	-90.02	0.0	-90.1	90.1	74.6	15.51	5.811		
3,600.0	3,600.0	3,600.0	3,600.0	8.0	8.0	-90.02	0.0	-90.1	90.1	74.2	15.96	5.647		
3,700.0	3,700.0	3,700.0	3,700.0	8.2	8.2	-90.02	0.0	-90.1	90.1	73.7	16.41	5.492		
3,800.0	3,800.0	3,800.0	3,800.0	8.4	8.4	-90.02	0.0	-90.1	90.1	73.3	16.86	5.346		
3,900.0	3,900.0	3,900.0	3,900.0	8.7	8.7	-90.02	0.0	-90.1	90.1	72.8	17.31	5.207		
4,000.0	4,000.0	4,000.0	4,000.0	8.9	8.9	-90.02	0.0	-90.1	90.1	72.4	17.76	5.075		
4,100.0	4,100.0	4,100.0	4,100.0	9.1	9.1	-90.02	0.0	-90.1	90.1	71.9	18.21	4.950		
4,200.0	4,200.0	4,200.0	4,200.0	9.3	9.3	-90.02	0.0	-90.1	90.1	71.5	18.66	4.830		
4,300.0	4,300.0	4,300.0	4,300.0	9.6	9.6	-90.02	0.0	-90.1	90.1	71.0	19.11	4.717		
4,400.0	4,400.0	4,400.0	4,400.0	9.8	9.8	-90.02	0.0	-90.1	90.1	70.6	19.55	4.608		
4,500.0	4,500.0	4,500.0	4,500.0	10.0	10.0	-90.02	0.0	-90.1	90.1	70.1	20.00	4.505		
4,600.0	4,600.0	4,600.0	4,600.0	10.2	10.2	-90.02	0.0	-90.1	90.1	69.7	20.45	4.406		
4,700.0	4,700.0	4,700.0	4,700.0	10.5	10.5	-90.02	0.0	-90.1	90.1	69.2	20.90	4.311		
4,800.0	4,800.0	4,800.0	4,800.0	10.7	10.7	-90.02	0.0	-90.1	90.1	68.8	21.35	4.220		
4,900.0	4,900.0	4,900.0	4,900.0	10.9	10.9	-90.02	0.0	-90.1	90.1	68.3	21.80	4.133		
5,000.0	5,000.0	5,000.0	5,000.0	11.1	11.1	-90.02	0.0	-90.1	90.1	67.9	22.25	4.050 CC		
5,038.9	5,038.9	5,038.9	5,038.9	11.2	11.2	158.44	0.0	-90.1	90.3	67.8	22.42	4.025		
5,100.0	5,100.0	5,100.0	5,100.0	11.3	11.4	158.50	0.0	-90.1	90.5	67.8	22.69	3.989 ES, SF		
5,200.0	5,199.9	5,199.9	5,199.9	11.5	11.6	159.50	0.0	-90.1	94.9	71.8	23.06	4.116		
5,300.0	5,299.4	5,299.4	5,299.4	11.7	11.8	161.32	0.0	-90.1	104.3	80.9	23.38	4.460		
5,400.0	5,398.2	5,398.2	5,398.2	11.9	12.0	163.53	0.0	-90.1	118.7	95.1	23.64	5.021		
5,500.0	5,496.1	5,496.1	5,496.1	12.2	12.2	165.76	0.0	-90.1	138.3	114.4	23.84	5.799		
5,600.0	5,592.8	5,592.8	5,592.8	12.4	12.5	167.79	0.0	-90.1	163.0	139.0	23.99	6.795		
5,700.0	5,688.1	5,686.6	5,686.6	12.7	12.7	169.36	-0.4	-90.3	193.0	169.0	24.07	8.020		
5,800.0	5,781.6	5,776.0	5,775.8	13.0	12.8	169.43	-4.9	-92.8	229.4	205.3	24.07	9.532		
5,900.0	5,873.2	5,861.9	5,861.1	13.4	13.0	168.39	-13.8	-97.6	272.1	248.1	24.03	11.324		
6,000.0	5,962.5	5,943.6	5,941.5	13.9	13.1	166.74	-26.3	-104.5	321.1	297.1	23.99	13.387		
6,100.0	6,049.6	6,020.7	6,016.5	14.4	13.3	164.98	-41.9	-113.0	375.7	351.6	24.13	15.570		
6,200.0	6,136.2	6,094.6	6,087.5	15.1	13.4	163.34	-60.1	-122.9	432.9	408.3	24.59	17.601		
6,300.0	6,222.8	6,165.6	6,154.6	15.8	13.6	161.61	-80.6	-134.1	491.8	466.7	25.10	19.592		
6,400.0	6,309.4	6,233.6	6,217.6	16.5	13.7	159.87	-102.9	-146.3	552.7	527.0	25.66	21.540		
6,500.0	6,396.0	6,300.0	6,277.9	17.3	13.9	158.13	-127.3	-159.6	615.4	589.2	26.26	23.435		
6,600.0	6,482.6	6,359.8	6,331.1	18.1	14.1	156.55	-151.3	-172.7	680.1	653.2	26.90	25.281		
6,700.0	6,569.9	6,422.9	6,386.8	18.8	14.4	-178.72	-176.8	-187.5	746.8	719.9	26.97	27.696		
6,800.0	6,657.4	6,487.2	6,446.3	19.5	14.6	-146.78	-195.0	-203.5	814.2	786.6	27.66	29.438		
6,900.0	6,740.6	6,554.1	6,510.3	20.0	14.8	-122.23	-204.2	-220.7	879.9	850.9	28.93	30.412		
7,000.0	6,815.2	6,628.4	6,582.0	20.5	15.0	-105.81	-202.5	-239.9	941.5	911.4	30.10	31.281		
7,100.0	6,877.5	6,718.6	6,667.0	20.8	15.2	-95.74	-183.9	-262.7	996.9	966.2	30.78	32.394		

CC - Min centre to center distance or convergent point, SF - min separation factor, ES - min ellipse separation

Company:	Great Western	Local Co-ordinate Reference:	Well Taoka KF 01-040HN
Project:	SEC.1-T1N-R65W	TVD Reference:	WELL @ 4972.4ft (RKB - 16.5')
Reference Site:	Taoka East Pad Sec.1-T1N-R65W	MD Reference:	WELL @ 4972.4ft (RKB - 16.5')
Site Error:	0.0ft	North Reference:	True
Reference Well:	Taoka KF 01-040HN	Survey Calculation Method:	Minimum Curvature
Well Error:	0.0ft	Output errors are at	2.00 sigma
Reference Wellbore	Wellbore #1	Database:	Landmark
Reference Design:	Plan #1 (11-18-13)	Offset TVD Reference:	Offset Datum

Company:	Great Western	Local Co-ordinate Reference:	Well Taoka KF 01-040HN
Project:	SEC.1-T1N-R65W	TVD Reference:	WELL @ 4972.4ft (RKB - 16.5')
Reference Site:	Taoka East Pad Sec.1-T1N-R65W	MD Reference:	WELL @ 4972.4ft (RKB - 16.5')
Site Error:	0.0ft	North Reference:	True
Reference Well:	Taoka KF 01-040HN	Survey Calculation Method:	Minimum Curvature
Well Error:	0.0ft	Output errors are at	2.00 sigma
Reference Wellbore	Wellbore #1	Database:	Landmark
Reference Design:	Plan #1 (11-18-13)	Offset TVD Reference:	Offset Datum

Offset Design													Offset Site Error:	0.0 ft
Survey Program: 0-MWD													Offset Well Error:	0.0 ft
Reference		Offset		Semi Major Axis			Distance							Warning
Measured Depth (ft)	Vertical Depth (ft)	Measured Depth (ft)	Vertical Depth (ft)	Reference (ft)	Offset (ft)	Highside Toolface (°)	Offset Wellbore Centre +N/-S (ft)	+E/-W (ft)	Between Centres (ft)	Between Ellipses (ft)	Minimum Separation (ft)	Separation Factor		
0.0	0.0	0.0	0.0	0.0	0.0	-90.04	0.0	-59.9	59.9					
100.0	100.0	100.0	100.0	0.1	0.1	-90.04	0.0	-59.9	59.9	59.7	0.22	266.457		
200.0	200.0	200.0	200.0	0.3	0.3	-90.04	0.0	-59.9	59.9	59.2	0.67	88.819		
300.0	300.0	300.0	300.0	0.6	0.6	-90.04	0.0	-59.9	59.9	58.8	1.12	53.291		
400.0	400.0	400.0	400.0	0.8	0.8	-90.04	0.0	-59.9	59.9	58.3	1.57	38.065		
500.0	500.0	500.0	500.0	1.0	1.0	-90.04	0.0	-59.9	59.9	57.9	2.02	29.606		
600.0	600.0	600.0	600.0	1.2	1.2	-90.04	0.0	-59.9	59.9	57.4	2.47	24.223		
700.0	700.0	700.0	700.0	1.5	1.5	-90.04	0.0	-59.9	59.9	57.0	2.92	20.497		
800.0	800.0	800.0	800.0	1.7	1.7	-90.04	0.0	-59.9	59.9	56.5	3.37	17.764		
900.0	900.0	900.0	900.0	1.9	1.9	-90.04	0.0	-59.9	59.9	56.1	3.82	15.674		
1,000.0	1,000.0	1,000.0	1,000.0	2.1	2.1	-90.04	0.0	-59.9	59.9	55.6	4.27	14.024		
1,100.0	1,100.0	1,100.0	1,100.0	2.4	2.4	-90.04	0.0	-59.9	59.9	55.2	4.72	12.688		
1,200.0	1,200.0	1,200.0	1,200.0	2.6	2.6	-90.04	0.0	-59.9	59.9	54.7	5.17	11.585		
1,300.0	1,300.0	1,300.0	1,300.0	2.8	2.8	-90.04	0.0	-59.9	59.9	54.3	5.62	10.658		
1,400.0	1,400.0	1,400.0	1,400.0	3.0	3.0	-90.04	0.0	-59.9	59.9	53.8	6.07	9.869		
1,500.0	1,500.0	1,500.0	1,500.0	3.3	3.3	-90.04	0.0	-59.9	59.9	53.4	6.52	9.188		
1,600.0	1,600.0	1,600.0	1,600.0	3.5	3.5	-90.04	0.0	-59.9	59.9	52.9	6.97	8.595		
1,700.0	1,700.0	1,700.0	1,700.0	3.7	3.7	-90.04	0.0	-59.9	59.9	52.5	7.42	8.074		
1,800.0	1,800.0	1,800.0	1,800.0	3.9	3.9	-90.04	0.0	-59.9	59.9	52.0	7.87	7.613		
1,900.0	1,900.0	1,900.0	1,900.0	4.2	4.2	-90.04	0.0	-59.9	59.9	51.6	8.32	7.202		
2,000.0	2,000.0	2,000.0	2,000.0	4.4	4.4	-90.04	0.0	-59.9	59.9	51.1	8.77	6.832		
2,100.0	2,100.0	2,100.0	2,100.0	4.6	4.6	-90.04	0.0	-59.9	59.9	50.7	9.22	6.499		
2,200.0	2,200.0	2,200.0	2,200.0	4.8	4.8	-90.04	0.0	-59.9	59.9	50.2	9.66	6.197		
2,300.0	2,300.0	2,300.0	2,300.0	5.1	5.1	-90.04	0.0	-59.9	59.9	49.8	10.11	5.921		
2,400.0	2,400.0	2,400.0	2,400.0	5.3	5.3	-90.04	0.0	-59.9	59.9	49.3	10.56	5.669		
2,500.0	2,500.0	2,500.0	2,500.0	5.5	5.5	-90.04	0.0	-59.9	59.9	48.9	11.01	5.438		
2,600.0	2,600.0	2,600.0	2,600.0	5.7	5.7	-90.04	0.0	-59.9	59.9	48.4	11.46	5.225		
2,700.0	2,700.0	2,700.0	2,700.0	6.0	6.0	-90.04	0.0	-59.9	59.9	48.0	11.91	5.027		
2,800.0	2,800.0	2,800.0	2,800.0	6.2	6.2	-90.04	0.0	-59.9	59.9	47.5	12.36	4.845		
2,900.0	2,900.0	2,900.0	2,900.0	6.4	6.4	-90.04	0.0	-59.9	59.9	47.1	12.81	4.675		
3,000.0	3,000.0	3,000.0	3,000.0	6.6	6.6	-90.04	0.0	-59.9	59.9	46.6	13.26	4.516		
3,100.0	3,100.0	3,100.0	3,100.0	6.9	6.9	-90.04	0.0	-59.9	59.9	46.2	13.71	4.368		
3,200.0	3,200.0	3,200.0	3,200.0	7.1	7.1	-90.04	0.0	-59.9	59.9	45.7	14.16	4.229		
3,300.0	3,300.0	3,300.0	3,300.0	7.3	7.3	-90.04	0.0	-59.9	59.9	45.3	14.61	4.099		
3,400.0	3,400.0	3,400.0	3,400.0	7.5	7.5	-90.04	0.0	-59.9	59.9	44.8	15.06	3.977		
3,500.0	3,500.0	3,500.0	3,500.0	7.8	7.8	-90.04	0.0	-59.9	59.9	44.4	15.51	3.862		
3,600.0	3,600.0	3,600.0	3,600.0	8.0	8.0	-90.04	0.0	-59.9	59.9	43.9	15.96	3.753		
3,700.0	3,700.0	3,700.0	3,700.0	8.2	8.2	-90.04	0.0	-59.9	59.9	43.5	16.41	3.650		
3,800.0	3,800.0	3,800.0	3,800.0	8.4	8.4	-90.04	0.0	-59.9	59.9	43.0	16.86	3.553		
3,900.0	3,900.0	3,900.0	3,900.0	8.7	8.7	-90.04	0.0	-59.9	59.9	42.6	17.31	3.460		
4,000.0	4,000.0	4,000.0	4,000.0	8.9	8.9	-90.04	0.0	-59.9	59.9	42.1	17.76	3.373		
4,100.0	4,100.0	4,100.0	4,100.0	9.1	9.1	-90.04	0.0	-59.9	59.9	41.7	18.21	3.290		
4,200.0	4,200.0	4,200.0	4,200.0	9.3	9.3	-90.04	0.0	-59.9	59.9	41.2	18.66	3.210		
4,300.0	4,300.0	4,300.0	4,300.0	9.6	9.6	-90.04	0.0	-59.9	59.9	40.8	19.11	3.135		
4,400.0	4,400.0	4,400.0	4,400.0	9.8	9.8	-90.04	0.0	-59.9	59.9	40.3	19.55	3.063		
4,500.0	4,500.0	4,500.0	4,500.0	10.0	10.0	-90.04	0.0	-59.9	59.9	39.9	20.00	2.994		
4,600.0	4,600.0	4,600.0	4,600.0	10.2	10.2	-90.04	0.0	-59.9	59.9	39.4	20.45	2.928		
4,700.0	4,700.0	4,700.0	4,700.0	10.5	10.5	-90.04	0.0	-59.9	59.9	39.0	20.90	2.865		
4,800.0	4,800.0	4,800.0	4,800.0	10.7	10.7	-90.04	0.0	-59.9	59.9	38.5	21.35	2.805		
4,900.0	4,900.0	4,900.0	4,900.0	10.9	10.9	-90.04	0.0	-59.9	59.9	38.1	21.80	2.747		
5,000.0	5,000.0	5,000.0	5,000.0	11.1	11.1	-90.04	0.0	-59.9	59.9	37.6	22.25	2.691 CC		
5,038.9	5,038.9	5,038.9	5,038.9	11.2	11.2	158.44	0.0	-59.9	60.0	37.6	22.42	2.678		

CC - Min centre to center distance or convergent point, SF - min separation factor, ES - min ellipse separation

Company:	Great Western	Local Co-ordinate Reference:	Well Taoka KF 01-040HN
Project:	SEC.1-T1N-R65W	TVD Reference:	WELL @ 4972.4ft (RKB - 16.5')
Reference Site:	Taoka East Pad Sec.1-T1N-R65W	MD Reference:	WELL @ 4972.4ft (RKB - 16.5')
Site Error:	0.0ft	North Reference:	True
Reference Well:	Taoka KF 01-040HN	Survey Calculation Method:	Minimum Curvature
Well Error:	0.0ft	Output errors are at	2.00 sigma
Reference Wellbore	Wellbore #1	Database:	Landmark
Reference Design:	Plan #1 (11-18-13)	Offset TVD Reference:	Offset Datum

Offset Design Taoka East Pad Sec.1-T1N-R65W - Taoka KF 01-038HC - Wellbore #1 - Plan #1 (11-18-13)													Offset Site Error:	0.0 ft
Survey Program: 0-MWD													Offset Well Error:	0.0 ft
Reference		Offset		Semi Major Axis			Distance							Warning
Measured Depth (ft)	Vertical Depth (ft)	Measured Depth (ft)	Vertical Depth (ft)	Reference (ft)	Offset (ft)	Highside Toolface (°)	Offset Wellbore Centre +N/-S (ft)	+E/-W (ft)	Between Centres (ft)	Between Ellipses (ft)	Minimum Separation (ft)	Separation Factor		
5,100.0	5,100.0	5,100.0	5,100.0	11.3	11.4	158.53	0.0	-59.9	60.3	37.6	22.69	2.657	ES, SF	
5,200.0	5,199.9	5,199.9	5,199.9	11.5	11.6	160.01	0.0	-59.9	64.7	41.6	23.06	2.805		
5,300.0	5,299.4	5,299.4	5,299.4	11.7	11.8	162.55	0.0	-59.9	74.1	50.7	23.37	3.170		
5,400.0	5,398.2	5,398.2	5,398.2	11.9	12.0	165.37	0.0	-59.9	88.7	65.0	23.63	3.751		
5,500.0	5,496.1	5,496.1	5,496.1	12.2	12.2	167.95	0.0	-59.9	108.4	84.6	23.84	4.548		
5,600.0	5,592.8	5,592.8	5,592.8	12.4	12.5	170.09	0.0	-59.9	133.4	109.4	23.98	5.561		
5,700.0	5,688.1	5,688.1	5,688.1	12.7	12.7	171.79	0.0	-59.9	163.4	139.3	24.06	6.790		
5,800.0	5,781.6	5,781.6	5,781.6	13.0	12.9	173.11	0.0	-59.9	198.5	174.4	24.10	8.237		
5,900.0	5,873.2	5,873.2	5,873.2	13.4	13.1	174.14	0.0	-59.9	238.5	214.4	24.07	9.905		
6,000.0	5,962.5	5,962.5	5,962.5	13.9	13.3	174.93	0.0	-59.9	283.2	259.2	24.00	11.800		
6,100.0	6,049.6	6,049.6	6,049.6	14.4	13.5	175.61	0.0	-59.9	332.3	308.2	24.10	13.789		
6,200.0	6,136.2	6,144.9	6,144.9	15.1	13.7	176.01	-1.4	-59.8	381.8	357.3	24.51	15.575		
6,300.0	6,222.8	6,255.9	6,254.6	15.8	13.9	174.43	-16.9	-58.9	427.3	402.4	24.94	17.130		
6,400.0	6,309.4	6,367.5	6,361.3	16.5	14.1	171.06	-49.3	-57.1	468.6	443.1	25.46	18.403		
6,500.0	6,396.0	6,474.6	6,457.8	17.3	14.3	166.57	-95.7	-54.5	507.1	481.0	26.13	19.405		
6,600.0	6,482.6	6,561.2	6,532.3	18.1	14.5	162.68	-139.7	-52.0	546.0	519.1	26.90	20.294		
6,700.0	6,569.9	6,638.7	6,601.5	18.8	14.8	-178.06	-174.2	-49.7	587.3	559.9	27.45	21.393		
6,800.0	6,657.4	6,718.4	6,677.8	19.5	15.0	-152.28	-196.6	-47.2	630.4	602.4	28.06	22.469		
6,900.0	6,740.6	6,803.7	6,762.6	20.0	15.3	-132.89	-204.9	-44.4	673.6	644.8	28.78	23.404		
7,000.0	6,815.2	6,898.9	6,857.0	20.5	15.4	-120.37	-194.7	-41.3	715.2	685.6	29.53	24.221		
7,100.0	6,877.5	7,009.9	6,961.3	20.8	15.5	-112.89	-157.7	-37.9	753.0	722.8	30.18	24.950		
7,200.0	6,924.2	7,144.8	7,070.6	21.1	15.6	-108.98	-79.6	-34.4	784.3	753.6	30.73	25.523		
7,300.0	6,953.0	7,310.5	7,164.8	21.3	15.8	-107.50	55.4	-31.4	805.7	774.3	31.41	25.653		
7,400.0	6,962.4	7,498.6	7,203.4	21.5	16.6	-107.24	238.1	-30.2	813.1	780.5	32.66	24.901		
7,500.0	6,962.4	7,598.6	7,203.4	21.8	17.2	-107.24	338.1	-30.3	813.2	779.2	33.95	23.954		
7,600.0	6,962.4	7,698.6	7,203.4	22.2	18.1	-107.24	438.1	-30.4	813.2	777.6	35.58	22.858		
7,700.0	6,962.4	7,798.6	7,203.4	22.8	19.1	-107.24	538.1	-30.5	813.2	775.7	37.50	21.687		
7,800.0	6,962.4	7,898.6	7,203.4	23.6	20.2	-107.24	638.1	-30.5	813.2	773.5	39.67	20.500		
7,900.0	6,962.4	7,998.6	7,203.4	24.5	21.4	-107.24	738.1	-30.6	813.2	771.2	42.05	19.339		
8,000.0	6,962.4	8,098.6	7,203.4	25.5	22.8	-107.24	838.1	-30.7	813.2	768.6	44.61	18.229		
8,100.0	6,962.4	8,198.6	7,203.4	26.7	24.2	-107.24	938.1	-30.8	813.3	765.9	47.32	17.185		
8,200.0	6,962.4	8,298.6	7,203.4	28.0	25.7	-107.24	1,038.1	-30.9	813.3	763.1	50.16	16.214		
8,300.0	6,962.4	8,398.6	7,203.4	29.3	27.2	-107.24	1,138.1	-30.9	813.3	760.2	53.10	15.316		
8,400.0	6,962.4	8,498.6	7,203.4	30.7	28.8	-107.24	1,238.1	-31.0	813.3	757.2	56.13	14.490		
8,500.0	6,962.4	8,598.6	7,203.4	32.2	30.4	-107.24	1,338.1	-31.1	813.3	754.1	59.23	13.731		
8,600.0	6,962.4	8,698.6	7,203.4	33.8	32.0	-107.24	1,438.1	-31.2	813.3	750.9	62.40	13.035		
8,700.0	6,962.4	8,798.6	7,203.4	35.3	33.7	-107.24	1,538.1	-31.3	813.4	747.7	65.62	12.395		
8,800.0	6,962.4	8,898.6	7,203.4	36.9	35.4	-107.24	1,638.1	-31.3	813.4	744.5	68.89	11.807		
8,900.0	6,962.4	8,998.6	7,203.4	38.6	37.2	-107.24	1,738.1	-31.4	813.4	741.2	72.20	11.266		
9,000.0	6,962.4	9,098.6	7,203.4	40.2	38.9	-107.23	1,838.1	-31.5	813.4	737.9	75.54	10.768		
9,100.0	6,962.4	9,198.6	7,203.4	41.9	40.7	-107.23	1,938.1	-31.6	813.4	734.5	78.91	10.308		
9,200.0	6,962.4	9,298.6	7,203.4	43.6	42.4	-107.23	2,038.1	-31.7	813.4	731.1	82.32	9.882		
9,300.0	6,962.4	9,398.6	7,203.4	45.4	44.2	-107.23	2,138.1	-31.7	813.4	727.7	85.74	9.487		
9,400.0	6,962.4	9,498.6	7,203.4	47.1	46.0	-107.23	2,238.1	-31.8	813.5	724.3	89.19	9.121		
9,500.0	6,962.4	9,598.6	7,203.4	48.8	47.8	-107.23	2,338.1	-31.9	813.5	720.8	92.65	8.780		
9,600.0	6,962.4	9,698.6	7,203.4	50.6	49.6	-107.23	2,438.1	-32.0	813.5	717.4	96.13	8.462		
9,700.0	6,962.4	9,798.6	7,203.4	52.4	51.4	-107.23	2,538.1	-32.0	813.5	713.9	99.63	8.165		
9,800.0	6,962.4	9,898.6	7,203.4	54.2	53.3	-107.23	2,638.1	-32.1	813.5	710.4	103.14	7.888		
9,900.0	6,962.4	9,998.6	7,203.4	56.0	55.1	-107.23	2,738.1	-32.2	813.5	706.9	106.66	7.627		
10,000.0	6,962.4	10,098.6	7,203.4	57.8	56.9	-107.23	2,838.1	-32.3	813.6	703.4	110.19	7.383		
10,100.0	6,962.4	10,198.6	7,203.4	59.6	58.8	-107.23	2,938.1	-32.4	813.6	699.8	113.74	7.153		
10,200.0	6,962.4	10,298.6	7,203.4	61.4	60.6	-107.23	3,038.1	-32.4	813.6	696.3	117.29	6.937		

CC - Min centre to center distance or convergent point, SF - min separation factor, ES - min ellipse separation

Company:	Great Western	Local Co-ordinate Reference:	Well Taoka KF 01-040HN
Project:	SEC.1-T1N-R65W	TVD Reference:	WELL @ 4972.4ft (RKB - 16.5')
Reference Site:	Taoka East Pad Sec.1-T1N-R65W	MD Reference:	WELL @ 4972.4ft (RKB - 16.5')
Site Error:	0.0ft	North Reference:	True
Reference Well:	Taoka KF 01-040HN	Survey Calculation Method:	Minimum Curvature
Well Error:	0.0ft	Output errors are at	2.00 sigma
Reference Wellbore	Wellbore #1	Database:	Landmark
Reference Design:	Plan #1 (11-18-13)	Offset TVD Reference:	Offset Datum

Offset Design Taoka East Pad Sec.1-T1N-R65W - Taoka KF 01-038HC - Wellbore #1 - Plan #1 (11-18-13)												Offset Site Error:	0.0 ft
Survey Program: 0-MWD												Offset Well Error:	0.0 ft
Reference		Offset		Semi Major Axis			Distance						
Measured Depth (ft)	Vertical Depth (ft)	Measured Depth (ft)	Vertical Depth (ft)	Reference (ft)	Offset (ft)	Highside Toolface (°)	Offset Wellbore Centre +N/-S (ft)	+E/-W (ft)	Between Centres (ft)	Between Ellipses (ft)	Minimum Separation (ft)	Separation Factor	Warning
10,300.0	6,962.4	10,398.6	7,203.4	63.2	62.5	-107.23	3,138.1	-32.5	813.6	692.8	120.85	6.733	
10,400.0	6,962.4	10,498.6	7,203.4	65.0	64.3	-107.23	3,238.1	-32.6	813.6	689.2	124.41	6.540	
10,500.0	6,962.4	10,598.6	7,203.4	66.9	66.2	-107.23	3,338.1	-32.7	813.6	685.7	127.99	6.357	
10,600.0	6,962.4	10,698.6	7,203.4	68.7	68.1	-107.23	3,438.1	-32.8	813.7	682.1	131.57	6.184	
10,700.0	6,962.4	10,798.6	7,203.4	70.6	69.9	-107.23	3,538.1	-32.8	813.7	678.5	135.15	6.020	
10,800.0	6,962.4	10,898.6	7,203.4	72.4	71.8	-107.23	3,638.1	-32.9	813.7	674.9	138.74	5.865	
10,900.0	6,962.4	10,998.6	7,203.4	74.3	73.7	-107.23	3,738.1	-33.0	813.7	671.4	142.34	5.717	
11,000.0	6,962.4	11,098.6	7,203.4	76.1	75.5	-107.23	3,838.1	-33.1	813.7	667.8	145.94	5.576	
11,100.0	6,962.4	11,198.6	7,203.4	78.0	77.4	-107.23	3,938.1	-33.2	813.7	664.2	149.55	5.441	
11,200.0	6,962.4	11,298.6	7,203.4	79.8	79.3	-107.23	4,038.1	-33.2	813.8	660.6	153.16	5.313	
11,300.0	6,962.4	11,398.6	7,203.4	81.7	81.2	-107.23	4,138.1	-33.3	813.8	657.0	156.77	5.191	
11,400.0	6,962.4	11,498.6	7,203.4	83.5	83.1	-107.23	4,238.1	-33.4	813.8	653.4	160.39	5.074	
11,500.0	6,962.4	11,598.6	7,203.4	85.4	84.9	-107.23	4,338.1	-33.5	813.8	649.8	164.01	4.962	
11,600.0	6,962.4	11,698.6	7,203.4	87.3	86.8	-107.23	4,438.1	-33.6	813.8	646.2	167.63	4.855	
11,637.0	6,962.4	11,735.6	7,203.4	88.0	87.5	-107.23	4,475.1	-33.6	813.8	644.9	168.97	4.816	

Company:	Great Western	Local Co-ordinate Reference:	Well Taoka KF 01-040HN
Project:	SEC.1-T1N-R65W	TVD Reference:	WELL @ 4972.4ft (RKB - 16.5')
Reference Site:	Taoka East Pad Sec.1-T1N-R65W	MD Reference:	WELL @ 4972.4ft (RKB - 16.5')
Site Error:	0.0ft	North Reference:	True
Reference Well:	Taoka KF 01-040HN	Survey Calculation Method:	Minimum Curvature
Well Error:	0.0ft	Output errors are at	2.00 sigma
Reference Wellbore	Wellbore #1	Database:	Landmark
Reference Design:	Plan #1 (11-18-13)	Offset TVD Reference:	Offset Datum

Offset Design												Offset Site Error:	0.0 ft
Survey Program: 0-MWD												Offset Well Error:	0.0 ft
Reference		Offset		Semi Major Axis			Distance						
Measured Depth (ft)	Vertical Depth (ft)	Measured Depth (ft)	Vertical Depth (ft)	Reference (ft)	Offset (ft)	Highside Toolface (°)	Offset Wellbore Centre +N/-S (ft)	+E/-W (ft)	Between Centres (ft)	Between Ellipses (ft)	Minimum Separation (ft)	Separation Factor	Warning
0.0	0.0	0.0	0.0	0.0	0.0	-89.98	0.0	-30.2	30.2				
100.0	100.0	100.0	100.0	0.1	0.1	-89.98	0.0	-30.2	30.2	30.0	0.22	134.473	
200.0	200.0	200.0	200.0	0.3	0.3	-89.98	0.0	-30.2	30.2	29.6	0.67	44.824	
300.0	300.0	300.0	300.0	0.6	0.6	-89.98	0.0	-30.2	30.2	29.1	1.12	26.895	
400.0	400.0	400.0	400.0	0.8	0.8	-89.98	0.0	-30.2	30.2	28.7	1.57	19.210	
500.0	500.0	500.0	500.0	1.0	1.0	-89.98	0.0	-30.2	30.2	28.2	2.02	14.941	
600.0	600.0	600.0	600.0	1.2	1.2	-89.98	0.0	-30.2	30.2	27.8	2.47	12.225	
700.0	700.0	700.0	700.0	1.5	1.5	-89.98	0.0	-30.2	30.2	27.3	2.92	10.344	
800.0	800.0	800.0	800.0	1.7	1.7	-89.98	0.0	-30.2	30.2	26.9	3.37	8.965	
900.0	900.0	900.0	900.0	1.9	1.9	-89.98	0.0	-30.2	30.2	26.4	3.82	7.910	
1,000.0	1,000.0	1,000.0	1,000.0	2.1	2.1	-89.98	0.0	-30.2	30.2	26.0	4.27	7.078	
1,100.0	1,100.0	1,100.0	1,100.0	2.4	2.4	-89.98	0.0	-30.2	30.2	25.5	4.72	6.403	
1,200.0	1,200.0	1,200.0	1,200.0	2.6	2.6	-89.98	0.0	-30.2	30.2	25.1	5.17	5.847	
1,300.0	1,300.0	1,300.0	1,300.0	2.8	2.8	-89.98	0.0	-30.2	30.2	24.6	5.62	5.379	
1,400.0	1,400.0	1,400.0	1,400.0	3.0	3.0	-89.98	0.0	-30.2	30.2	24.2	6.07	4.980	
1,500.0	1,500.0	1,500.0	1,500.0	3.3	3.3	-89.98	0.0	-30.2	30.2	23.7	6.52	4.637	
1,600.0	1,600.0	1,600.0	1,600.0	3.5	3.5	-89.98	0.0	-30.2	30.2	23.3	6.97	4.338	
1,700.0	1,700.0	1,700.0	1,700.0	3.7	3.7	-89.98	0.0	-30.2	30.2	22.8	7.42	4.075	
1,800.0	1,800.0	1,800.0	1,800.0	3.9	3.9	-89.98	0.0	-30.2	30.2	22.4	7.87	3.842	
1,900.0	1,900.0	1,900.0	1,900.0	4.2	4.2	-89.98	0.0	-30.2	30.2	21.9	8.32	3.634	
2,000.0	2,000.0	2,000.0	2,000.0	4.4	4.4	-89.98	0.0	-30.2	30.2	21.5	8.77	3.448	
2,100.0	2,100.0	2,100.0	2,100.0	4.6	4.6	-89.98	0.0	-30.2	30.2	21.0	9.22	3.280	
2,200.0	2,200.0	2,200.0	2,200.0	4.8	4.8	-89.98	0.0	-30.2	30.2	20.6	9.66	3.127	
2,300.0	2,300.0	2,300.0	2,300.0	5.1	5.1	-89.98	0.0	-30.2	30.2	20.1	10.11	2.988	
2,400.0	2,400.0	2,400.0	2,400.0	5.3	5.3	-89.98	0.0	-30.2	30.2	19.7	10.56	2.861	
2,500.0	2,500.0	2,500.0	2,500.0	5.5	5.5	-89.98	0.0	-30.2	30.2	19.2	11.01	2.744	
2,600.0	2,600.0	2,600.0	2,600.0	5.7	5.7	-89.98	0.0	-30.2	30.2	18.8	11.46	2.637	
2,700.0	2,700.0	2,700.0	2,700.0	6.0	6.0	-89.98	0.0	-30.2	30.2	18.3	11.91	2.537	
2,800.0	2,800.0	2,800.0	2,800.0	6.2	6.2	-89.98	0.0	-30.2	30.2	17.9	12.36	2.445	
2,900.0	2,900.0	2,900.0	2,900.0	6.4	6.4	-89.98	0.0	-30.2	30.2	17.4	12.81	2.359	
3,000.0	3,000.0	3,000.0	3,000.0	6.6	6.6	-89.98	0.0	-30.2	30.2	17.0	13.26	2.279	
3,100.0	3,100.0	3,100.0	3,100.0	6.9	6.9	-89.98	0.0	-30.2	30.2	16.5	13.71	2.204	
3,200.0	3,200.0	3,200.0	3,200.0	7.1	7.1	-89.98	0.0	-30.2	30.2	16.1	14.16	2.134	
3,300.0	3,300.0	3,300.0	3,300.0	7.3	7.3	-89.98	0.0	-30.2	30.2	15.6	14.61	2.069	
3,400.0	3,400.0	3,400.0	3,400.0	7.5	7.5	-89.98	0.0	-30.2	30.2	15.2	15.06	2.007	
3,500.0	3,500.0	3,500.0	3,500.0	7.8	7.8	-89.98	0.0	-30.2	30.2	14.7	15.51	1.949	
3,600.0	3,600.0	3,600.0	3,600.0	8.0	8.0	-89.98	0.0	-30.2	30.2	14.3	15.96	1.894	
3,700.0	3,700.0	3,700.0	3,700.0	8.2	8.2	-89.98	0.0	-30.2	30.2	13.8	16.41	1.842	
3,800.0	3,800.0	3,800.0	3,800.0	8.4	8.4	-89.98	0.0	-30.2	30.2	13.4	16.86	1.793	
3,900.0	3,900.0	3,900.0	3,900.0	8.7	8.7	-89.98	0.0	-30.2	30.2	12.9	17.31	1.746	
4,000.0	4,000.0	4,000.0	4,000.0	8.9	8.9	-89.98	0.0	-30.2	30.2	12.5	17.76	1.702	
4,100.0	4,100.0	4,100.0	4,100.0	9.1	9.1	-89.98	0.0	-30.2	30.2	12.0	18.21	1.660	
4,200.0	4,200.0	4,200.0	4,200.0	9.3	9.3	-89.98	0.0	-30.2	30.2	11.6	18.66	1.620	
4,300.0	4,300.0	4,300.0	4,300.0	9.6	9.6	-89.98	0.0	-30.2	30.2	11.1	19.11	1.582	
4,400.0	4,400.0	4,400.0	4,400.0	9.8	9.8	-89.98	0.0	-30.2	30.2	10.7	19.55	1.546	
4,500.0	4,500.0	4,500.0	4,500.0	10.0	10.0	-89.98	0.0	-30.2	30.2	10.2	20.00	1.511	
4,600.0	4,600.0	4,600.0	4,600.0	10.2	10.2	-89.98	0.0	-30.2	30.2	9.8	20.45	1.478 Level 3	
4,700.0	4,700.0	4,700.0	4,700.0	10.5	10.5	-89.98	0.0	-30.2	30.2	9.3	20.90	1.446 Level 3	
4,800.0	4,800.0	4,800.0	4,800.0	10.7	10.7	-89.98	0.0	-30.2	30.2	8.9	21.35	1.416 Level 3	
4,900.0	4,900.0	4,900.0	4,900.0	10.9	10.9	-89.98	0.0	-30.2	30.2	8.4	21.80	1.386 Level 3	
5,000.0	5,000.0	5,000.0	5,000.0	11.1	11.1	-89.98	0.0	-30.2	30.2	8.0	22.25	1.358 Level 3, CC	
5,038.9	5,038.9	5,038.9	5,038.9	11.2	11.2	158.56	0.0	-30.2	30.4	7.9	22.42	1.355 Level 3	

CC - Min centre to center distance or convergent point, SF - min separation factor, ES - min ellipse separation

Company:	Great Western	Local Co-ordinate Reference:	Well Taoka KF 01-040HN
Project:	SEC.1-T1N-R65W	TVD Reference:	WELL @ 4972.4ft (RKB - 16.5')
Reference Site:	Taoka East Pad Sec.1-T1N-R65W	MD Reference:	WELL @ 4972.4ft (RKB - 16.5')
Site Error:	0.0ft	North Reference:	True
Reference Well:	Taoka KF 01-040HN	Survey Calculation Method:	Minimum Curvature
Well Error:	0.0ft	Output errors are at	2.00 sigma
Reference Wellbore	Wellbore #1	Database:	Landmark
Reference Design:	Plan #1 (11-18-13)	Offset TVD Reference:	Offset Datum

Offset Design													Offset Site Error:	0.0 ft
Survey Program: 0-MWD													Offset Well Error:	0.0 ft
Reference		Offset		Semi Major Axis			Distance							Warning
Measured Depth (ft)	Vertical Depth (ft)	Measured Depth (ft)	Vertical Depth (ft)	Reference (ft)	Offset (ft)	Highside Toolface (°)	Offset Wellbore Centre +N/-S (ft)	+E/-W (ft)	Between Centres (ft)	Between Ellipses (ft)	Minimum Separation (ft)	Separation Factor		
5,100.0	5,100.0	5,100.0	5,100.0	11.3	11.4	158.73	0.0	-30.2	30.6	7.9	22.69	1.349	Level 3, ES, SF	
5,200.0	5,199.9	5,199.9	5,199.9	11.5	11.6	161.49	0.0	-30.2	35.0	12.0	23.06	1.520		
5,300.0	5,299.4	5,299.4	5,299.4	11.7	11.8	165.47	0.0	-30.2	44.6	21.2	23.37	1.907		
5,400.0	5,398.2	5,398.2	5,398.2	11.9	12.0	169.05	0.0	-30.2	59.3	35.7	23.63	2.512		
5,500.0	5,496.1	5,496.1	5,496.1	12.2	12.2	171.74	0.0	-30.2	79.4	55.5	23.82	3.331		
5,600.0	5,592.8	5,592.8	5,592.8	12.4	12.5	173.65	0.0	-30.2	104.5	80.6	23.96	4.362		
5,700.0	5,688.1	5,691.9	5,691.9	12.7	12.7	174.78	-0.8	-29.7	134.1	110.1	24.04	5.579		
5,800.0	5,781.6	5,795.6	5,795.3	13.0	12.9	174.19	-7.0	-25.5	164.0	140.0	24.05	6.821		
5,900.0	5,873.2	5,901.1	5,899.7	13.4	13.0	172.41	-19.6	-16.9	193.6	169.6	24.03	8.058		
6,000.0	5,962.5	6,007.9	6,003.9	13.9	13.2	169.87	-38.8	-3.8	223.0	199.0	24.01	9.289		
6,100.0	6,049.6	6,115.8	6,107.1	14.4	13.5	166.85	-64.7	13.8	252.1	227.9	24.24	10.403		
6,200.0	6,136.2	6,225.3	6,209.2	15.1	13.8	163.34	-97.5	36.1	277.6	252.8	24.87	11.162		
6,300.0	6,222.8	6,335.5	6,308.5	15.8	14.1	159.20	-136.8	62.9	299.2	273.5	25.69	11.647		
6,400.0	6,309.4	6,441.5	6,401.2	16.5	14.6	154.98	-178.7	92.6	317.8	291.1	26.68	11.911		
6,500.0	6,396.0	6,546.2	6,497.8	17.3	15.0	154.47	-202.4	124.5	335.1	307.6	27.45	12.208		
6,600.0	6,482.6	6,647.3	6,593.6	18.1	15.3	157.88	-202.0	156.1	351.0	323.3	27.74	12.656		
6,700.0	6,569.9	6,738.4	6,677.8	18.8	15.5	-177.56	-181.9	183.9	368.9	341.2	27.69	13.324		
6,800.0	6,657.4	6,825.0	6,752.6	19.5	15.7	-148.00	-146.3	208.6	389.2	361.1	28.14	13.833		
6,900.0	6,740.6	6,906.0	6,815.4	20.0	15.8	-125.57	-99.7	229.3	410.0	381.0	29.03	14.125		
7,000.0	6,815.2	6,985.2	6,868.0	20.5	15.9	-110.45	-43.2	246.6	429.4	399.4	30.02	14.306		
7,100.0	6,877.5	7,062.6	6,909.2	20.8	16.0	-100.60	20.7	260.2	445.9	415.1	30.85	14.453		
7,200.0	6,924.2	7,138.7	6,938.9	21.1	16.1	-94.43	90.1	270.0	458.5	427.0	31.48	14.564		
7,300.0	6,953.0	7,214.1	6,956.7	21.3	16.4	-91.04	163.0	275.8	466.2	434.2	32.04	14.553		
7,400.0	6,962.4	7,289.8	6,962.4	21.5	16.8	-90.00	238.3	277.6	468.8	436.1	32.69	14.340		
7,500.0	6,962.4	7,389.8	6,962.4	21.8	17.4	-90.00	338.3	277.5	468.8	434.8	34.00	13.789		
7,600.0	6,962.4	7,489.8	6,962.4	22.2	18.2	-90.00	438.3	277.5	468.8	433.1	35.66	13.146		
7,700.0	6,962.4	7,589.8	6,962.4	22.8	19.2	-90.00	538.3	277.4	468.8	431.2	37.64	12.454		
7,800.0	6,962.4	7,689.8	6,962.4	23.6	20.3	-90.00	638.3	277.3	468.8	428.9	39.90	11.751		
7,900.0	6,962.4	7,789.8	6,962.4	24.5	21.6	-90.00	738.3	277.2	468.9	426.5	42.38	11.063		
8,000.0	6,962.4	7,889.8	6,962.4	25.5	22.9	-90.00	838.3	277.1	468.9	423.8	45.05	10.408		
8,100.0	6,962.4	7,989.8	6,962.4	26.7	24.3	-90.00	938.3	277.1	468.9	421.0	47.88	9.793		
8,200.0	6,962.4	8,089.8	6,962.4	28.0	25.8	-90.00	1,038.3	277.0	468.9	418.1	50.84	9.223		
8,300.0	6,962.4	8,189.8	6,962.4	29.3	27.3	-90.00	1,138.3	276.9	468.9	415.0	53.91	8.698		
8,400.0	6,962.4	8,289.8	6,962.4	30.7	28.9	-90.00	1,238.3	276.8	468.9	411.9	57.07	8.216		
8,500.0	6,962.4	8,389.8	6,962.4	32.2	30.5	-90.00	1,338.3	276.7	469.0	408.6	60.32	7.775		
8,600.0	6,962.4	8,489.8	6,962.4	33.8	32.1	-90.00	1,438.3	276.7	469.0	405.4	63.62	7.371		
8,700.0	6,962.4	8,589.8	6,962.4	35.3	33.8	-90.00	1,538.3	276.6	469.0	402.0	66.99	7.001		
8,800.0	6,962.4	8,689.8	6,962.4	36.9	35.5	-90.00	1,638.3	276.5	469.0	398.6	70.40	6.662		
8,900.0	6,962.4	8,789.8	6,962.4	38.6	37.2	-90.00	1,738.3	276.4	469.0	395.2	73.85	6.351		
9,000.0	6,962.4	8,889.8	6,962.4	40.2	38.9	-90.00	1,838.3	276.3	469.1	391.7	77.34	6.065		
9,100.0	6,962.4	8,989.8	6,962.4	41.9	40.7	-90.00	1,938.3	276.3	469.1	388.2	80.86	5.801		
9,200.0	6,962.4	9,089.8	6,962.4	43.6	42.4	-90.00	2,038.3	276.2	469.1	384.7	84.41	5.558		
9,300.0	6,962.4	9,189.8	6,962.4	45.4	44.2	-90.00	2,138.3	276.1	469.1	381.1	87.98	5.332		
9,400.0	6,962.4	9,289.8	6,962.4	47.1	46.0	-90.00	2,238.3	276.0	469.1	377.6	91.57	5.123		
9,500.0	6,962.4	9,389.8	6,962.4	48.8	47.8	-90.00	2,338.3	275.9	469.1	374.0	95.18	4.929		
9,600.0	6,962.4	9,489.8	6,962.4	50.6	49.6	-90.00	2,438.3	275.8	469.2	370.4	98.81	4.748		
9,700.0	6,962.4	9,589.8	6,962.4	52.4	51.4	-90.00	2,538.3	275.8	469.2	366.7	102.45	4.579		
9,800.0	6,962.4	9,689.8	6,962.4	54.2	53.3	-90.00	2,638.3	275.7	469.2	363.1	106.11	4.422		
9,900.0	6,962.4	9,789.8	6,962.4	56.0	55.1	-90.00	2,738.3	275.6	469.2	359.4	109.78	4.274		
10,000.0	6,962.4	9,889.8	6,962.4	57.8	56.9	-90.00	2,838.3	275.5	469.2	355.8	113.46	4.136		
10,100.0	6,962.4	9,989.8	6,962.4	59.6	58.8	-90.00	2,938.3	275.4	469.2	352.1	117.15	4.006		
10,200.0	6,962.4	10,089.8	6,962.4	61.4	60.6	-90.00	3,038.3	275.4	469.3	348.4	120.84	3.883		

CC - Min centre to center distance or convergent point, SF - min separation factor, ES - min ellipse separation

Company:	Great Western	Local Co-ordinate Reference:	Well Taoka KF 01-040HN
Project:	SEC.1-T1N-R65W	TVD Reference:	WELL @ 4972.4ft (RKB - 16.5')
Reference Site:	Taoka East Pad Sec.1-T1N-R65W	MD Reference:	WELL @ 4972.4ft (RKB - 16.5')
Site Error:	0.0ft	North Reference:	True
Reference Well:	Taoka KF 01-040HN	Survey Calculation Method:	Minimum Curvature
Well Error:	0.0ft	Output errors are at	2.00 sigma
Reference Wellbore	Wellbore #1	Database:	Landmark
Reference Design:	Plan #1 (11-18-13)	Offset TVD Reference:	Offset Datum

Offset Design Taoka East Pad Sec.1-T1N-R65W - Taoka KF 01-039HN - Wellbore #1 - Plan #1 (11-18-13)												Offset Site Error:	0.0 ft
Survey Program: 0-MWD												Offset Well Error:	0.0 ft
Reference		Offset		Semi Major Axis			Distance						
Measured Depth (ft)	Vertical Depth (ft)	Measured Depth (ft)	Vertical Depth (ft)	Reference (ft)	Offset (ft)	Highside Toolface (°)	Offset Wellbore Centre +N/-S (ft)	+E/-W (ft)	Between Centres (ft)	Between Ellipses (ft)	Minimum Separation (ft)	Separation Factor	Warning
10,300.0	6,962.4	10,189.8	6,962.4	63.2	62.5	-90.00	3,138.3	275.3	469.3	344.7	124.55	3.768	
10,400.0	6,962.4	10,289.8	6,962.4	65.0	64.3	-90.00	3,238.3	275.2	469.3	341.0	128.26	3.659	
10,500.0	6,962.4	10,389.8	6,962.4	66.9	66.2	-90.00	3,338.3	275.1	469.3	337.3	131.99	3.556	
10,600.0	6,962.4	10,489.8	6,962.4	68.7	68.0	-90.00	3,438.3	275.0	469.3	333.6	135.71	3.458	
10,700.0	6,962.4	10,589.8	6,962.4	70.6	69.9	-90.00	3,538.3	275.0	469.4	329.9	139.44	3.366	
10,800.0	6,962.4	10,689.8	6,962.4	72.4	71.8	-90.00	3,638.3	274.9	469.4	326.2	143.18	3.278	
10,900.0	6,962.4	10,789.8	6,962.4	74.3	73.6	-90.00	3,738.3	274.8	469.4	322.5	146.93	3.195	
11,000.0	6,962.4	10,889.8	6,962.4	76.1	75.5	-90.00	3,838.3	274.7	469.4	318.7	150.67	3.115	
11,100.0	6,962.4	10,989.8	6,962.4	78.0	77.4	-90.00	3,938.3	274.6	469.4	315.0	154.43	3.040	
11,200.0	6,962.4	11,089.8	6,962.4	79.8	79.3	-90.00	4,038.3	274.6	469.4	311.3	158.18	2.968	
11,300.0	6,962.4	11,189.8	6,962.4	81.7	81.1	-90.00	4,138.3	274.5	469.5	307.5	161.94	2.899	
11,400.0	6,962.4	11,289.8	6,962.4	83.5	83.0	-90.00	4,238.3	274.4	469.5	303.8	165.70	2.833	
11,500.0	6,962.4	11,389.8	6,962.4	85.4	84.9	-90.00	4,338.3	274.3	469.5	300.0	169.47	2.770	
11,600.0	6,962.4	11,489.8	6,962.4	87.3	86.8	-90.00	4,438.3	274.2	469.5	296.3	173.24	2.710	
11,637.0	6,962.4	11,526.8	6,962.4	88.0	87.5	-90.00	4,475.3	274.2	469.5	294.9	174.63	2.689	

Company:	Great Western	Local Co-ordinate Reference:	Well Taoka KF 01-040HN
Project:	SEC.1-T1N-R65W	TVD Reference:	WELL @ 4972.4ft (RKB - 16.5')
Reference Site:	Taoka East Pad Sec.1-T1N-R65W	MD Reference:	WELL @ 4972.4ft (RKB - 16.5')
Site Error:	0.0ft	North Reference:	True
Reference Well:	Taoka KF 01-040HN	Survey Calculation Method:	Minimum Curvature
Well Error:	0.0ft	Output errors are at	2.00 sigma
Reference Wellbore	Wellbore #1	Database:	Landmark
Reference Design:	Plan #1 (11-18-13)	Offset TVD Reference:	Offset Datum

Reference Depths are relative to WELL @ 4972.4ft (RKB - 16.5')
Offset Depths are relative to Offset Datum
Central Meridian is -105.500000 °

Coordinates are relative to: Taoka KF 01-040HN
Coordinate System is US State Plane 1983, Colorado Northern Zone
Grid Convergence at Surface is: 0.58°



Company:	Great Western	Local Co-ordinate Reference:	Well Taoka KF 01-040HN
Project:	SEC.1-T1N-R65W	TVD Reference:	WELL @ 4972.4ft (RKB - 16.5')
Reference Site:	Taoka East Pad Sec.1-T1N-R65W	MD Reference:	WELL @ 4972.4ft (RKB - 16.5')
Site Error:	0.0ft	North Reference:	True
Reference Well:	Taoka KF 01-040HN	Survey Calculation Method:	Minimum Curvature
Well Error:	0.0ft	Output errors are at	2.00 sigma
Reference Wellbore	Wellbore #1	Database:	Landmark
Reference Design:	Plan #1 (11-18-13)	Offset TVD Reference:	Offset Datum

Reference Depths are relative to WELL @ 4972.4ft (RKB - 16.5')

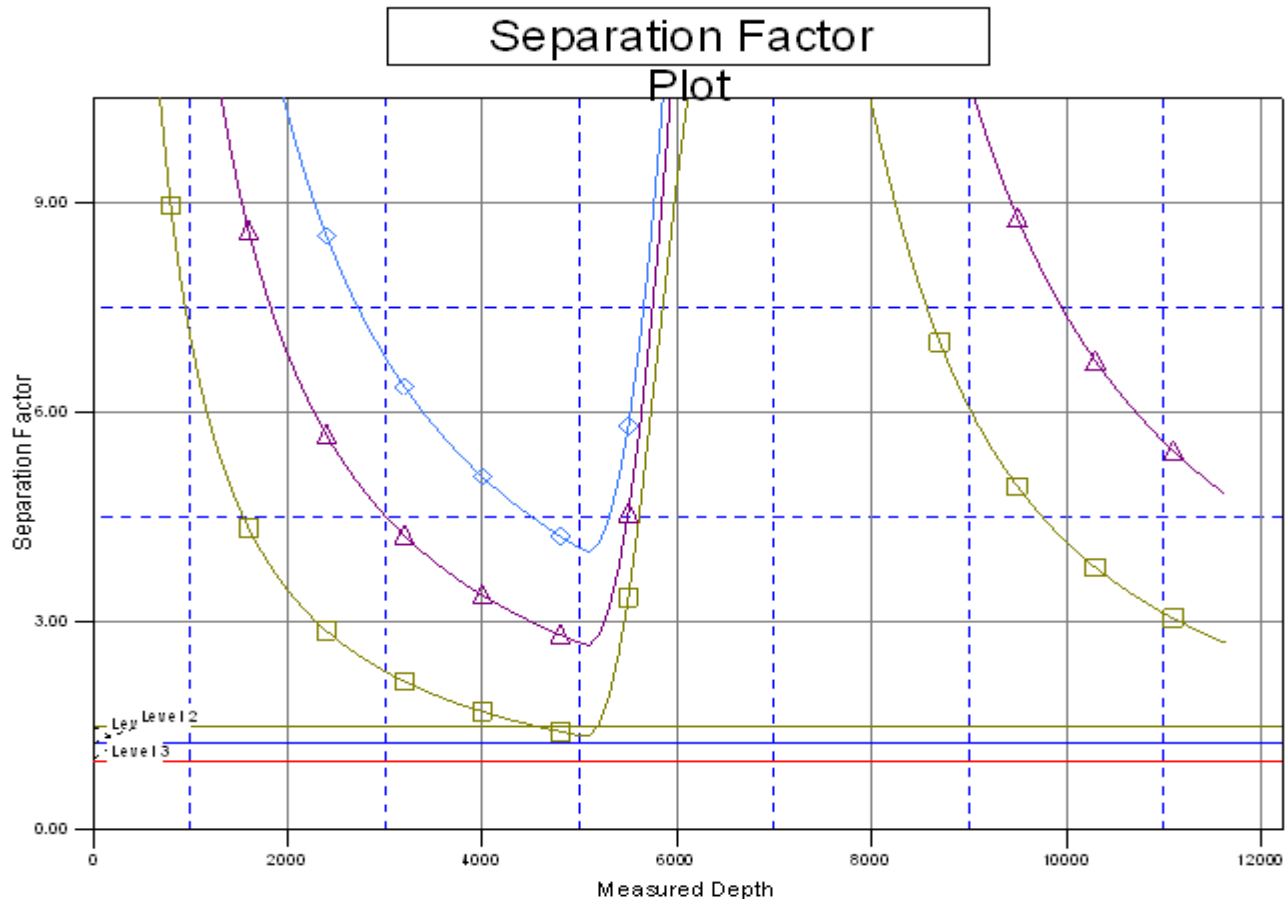
Offset Depths are relative to Offset Datum

Central Meridian is -105.500000 °

Coordinates are relative to: Taoka KF 01-040HN

Coordinate System is US State Plane 1983, Colorado Northern Zone

Grid Convergence at Surface is: 0.58°



LEGEND

01-038 HC, Wellbore #1, Plan #1 (11-18-13) V Taoka KF 01-039 HN, Wellbore #1, Plan #1 (11-18-13) V Taoka KF 01-036 HN, Wellbore #1, Pl: