

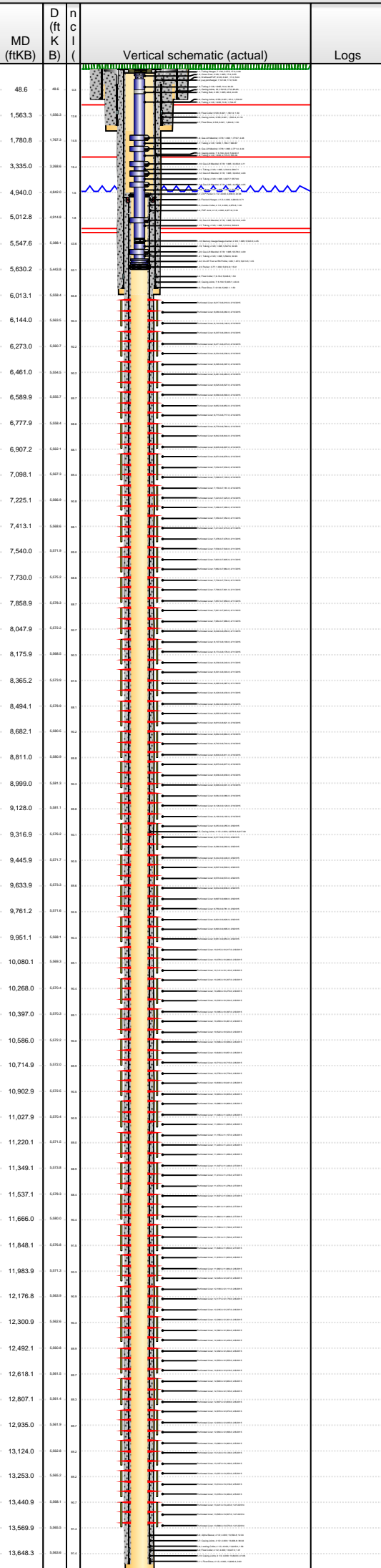


Lease Review All - Frac Summary

Well Name: HORSETAIL 30F-1943

API Number 051233873900	WPC ID 1CO0761016	Well Permit Number	Field Name DJ Horizontal Niobrara	County Weld	State CO
Well Configuration Type Lateral/Horizontal	Orig KB Elv (ft) 4,800.00	Ground Elevation (ft) 4,783.00	Casing Flange Elevation (ft)	Tubing Head Elevation (ft)	Total Depth (ftKB) 13,702.0
Original Spud Date 10/1/2014	Completion Date 2/12/2015	Asset Group Redtail	Responsible Engineer Charles Ohlson	N/S Dist (ft) 2,324.0	N/S Ref FNL
Lot	Quarter 1 SE	Quarter 2 NW	Quarter 3	Quarter 4	E/W Dist (ft) 1,920.0
	Section 30	Section Suffix	Section Type	Township 10 N	Township N/S Dir Range 57 W
				Meridian	

Lateral/Horizontal - Original Hole, 8/19/2015 8:51:48 AM



Wellbore Sections

Wellbore Name	Start Date	Size (in)	Act Top (ftKB)	Act Btm (ftKB)
Original Hole	4/23/2014	20	17.0	97.0
Original Hole	10/1/2014	13 1/2	97.0	1,620.0
Original Hole	10/2/2014	8 3/4	1,620.0	6,013.0
Original Hole	10/6/2014	6	6,013.0	13,702.0

Conductor Pipe, 97.0ftKB

OD (in)	Wt (lb/ft)	Grade	Top (ftKB)	Btm (ftKB)	Len (ft)	Item Des
16	84.00	K-55	17.0	97.0	80.00	Casing Joints

Surface Csg, 1,606.1ftKB

OD (in)	Wt (lb/ft)	Grade	Top (ftKB)	Btm (ftKB)	Len (ft)	Item Des
9 5/8	36.00	J-55	17.0	17.0	0.00	Casing Joints
9 5/8	36.00	J-55	17.0	17.0	0.00	Landing Joint
9 5/8	36.00	J-55	17.0	22.0	5.00	Wellhead/PUP
9 5/8	36.00	J-55	22.0	1,561.9	1,539.91	Casing Joints
9 5/8	36.00	J-55	1,561.9	1,563.4	1.50	Float Collar
9 5/8	36.00	J-55	1,563.4	1,604.6	41.16	Casing Joints
9 5/8	36.00	J-55	1,604.6	1,606.1	1.50	Float Shoe

Frac String, 4,939.9ftKB

OD (in)	Wt (lb/ft)	Grade	Top (ftKB)	Btm (ftKB)	Len (ft)	Item Des
7			26.8	27.9	1.05	Casing Hanger
4 1/2		11.60	27.9	71.1	43.25	4.5# P-110 BTC-TXP 11.6# casing
4 1/2			71.1	78.9	7.76	4.5" BTC-TXP spaceout pup jt 8.25', 3.55', 1.55'
4 1/2		11.60	78.9	4,932.4	4,853.47	4.5# P-110 BTC-TXP 11.6# casing
4 1/2			4,932.4	4,938.5	6.18	Pup Joint
5 3/4			4,938.5	4,939.9	1.33	Baker Hughes seal assembly

Intermediate Csg, 5,993.6ftKB

OD (in)	Wt (lb/ft)	Grade	Top (ftKB)	Btm (ftKB)	Len (ft)	Item Des
7	29.00	P-110	17.1	17.1	0.00	Landing Joint
7	29.00	P-110	17.1	22.1	5.00	pup joint/hanger
7	29.00	P-110	22.1	5,946.6	5,924.51	Casing Joints
7	29.00	P-110	5,946.6	5,948.1	1.50	Float Collar
7	29.00	P-110	5,948.1	5,992.1	44.04	Casing Joints
7	29.00	P-110	5,992.1	5,993.6	1.50	Float Shoe

Liner, 13,692.0ftKB

OD (in)	Wt (lb/ft)	Grade	Top (ftKB)	Btm (ftKB)	Len (ft)	Item Des
4 1/2	11.60	P-110	4,939.9	4,960.9	20.98	ZXP Packer
4 1/2	11.60	P-110	4,960.9	4,970.6	9.71	Flexlock Hanger
4 1/2	11.60	P-110	4,970.6	4,971.6	1.00	Combo Collar
4 1/2	11.60	P-110	4,971.6	4,976.9	5.33	PUP Joint
4 1/2	11.60	P-110	4,976.9	13,594.8	8,617.90	Casing Joints
4 1/2	11.60	P-110	13,594.8	13,606.8	12.04	Alpha Sleeve
4 1/2	11.60	P-110	13,606.8	13,645.8	38.94	Casing Joints
4 1/2	11.60	P-110	13,645.8	13,647.3	1.56	Landing Collar
4 1/2	11.60	P-110	13,647.3	13,648.3	1.01	Float Collar
4 1/2	11.60	P-110	13,648.3	13,689.4	41.06	Casing Joints
4 1/2	11.60	P-110	13,689.4	13,692.0	2.60	Float Shoe

Cement Stages

Des	Pump Start Date	Drill Out Date	Top (ftKB)	Btm (ftKB)	Top Meas Meth
Conductor Cement	4/23/2014		17.0	97.0	Returns to Surface
Surface Casing Cement	10/2/2014		17.0	1,606.1	Returns to Surface
Intermediate Casing Cement	10/5/2014		17.0	5,993.6	Returns to Surface
Liner Cement	10/12/2014		4,939.9	13,692.0	Returns to Surface

Perforations

Type of Hole	Date	Top (ftKB)	Btm (ftKB)	Zone
Perforated Liner	2/13/2015	6,017.0	6,019.0	Niobrara, Original Hole
Perforated Liner	2/13/2015	6,080.0	6,082.0	Niobrara, Original Hole
Perforated Liner	2/13/2015	6,144.0	6,146.0	Niobrara, Original Hole
Perforated Liner	2/12/2015	6,207.0	6,209.0	Niobrara, Original Hole
Perforated Liner	2/12/2015	6,271.0	6,273.0	Niobrara, Original Hole
Perforated Liner	2/12/2015	6,334.0	6,336.0	Niobrara, Original Hole
Perforated Liner	2/12/2015	6,395.0	6,397.0	Niobrara, Original Hole
Perforated Liner	2/12/2015	6,461.0	6,463.0	Niobrara, Original Hole
Perforated Liner	2/12/2015	6,525.0	6,527.0	Niobrara, Original Hole
Perforated Liner	2/12/2015	6,588.0	6,590.0	Niobrara, Original Hole
Perforated Liner	2/12/2015	6,652.0	6,654.0	Niobrara, Original Hole
Perforated Liner	2/12/2015	6,715.0	6,717.0	Niobrara, Original Hole
Perforated Liner	2/12/2015	6,778.0	6,780.0	Niobrara, Original Hole



Lease Review All - Frac Summary

Well Name: HORSETAIL 30F-1943

API Number 051233873900	WPC ID 1CO0761016	Well Permit Number	Field Name DJ Horizontal Niobrara	County Weld	State CO
Well Configuration Type Lateral/Horizontal	Orig KB Elv (ft) 4,800.00	Ground Elevation (ft) 4,783.00	Casing Flange Elevation (ft)	Tubing Head Elevation (ft)	Total Depth (ftKB) 13,702.0
Original Spud Date 10/1/2014	Completion Date 2/12/2015	Asset Group Redtail	Responsible Engineer Charles Ohlson	N/S Dist (ft) 2,324.0	N/S Ref FNL
				E/W Dist (ft) 1,920.0	E/W Ref FWL
Lot	Quarter 1 SE	Quarter 2 NW	Quarter 3	Quarter 4	Section 30
					Section Suffix
					Section Type
					Township 10 N
					Township N/S Dir
					Range 57
					Range E/W Dir
					Meridian

Lateral/Horizontal - Original Hole, 8/19/2015 8:51:51 AM **Perforations**

MD (ftKB)	D (ft K B)	n c l ()	Vertical schematic (actual)	Logs	Type of Hole	Date	Top (ftKB)	Btm (ftKB)	Zone
48.6	48.4	111			Perforated Liner	2/12/2015	6,842.0	6,844.0	Niobrara, Original Hole
1,563.3	1,564.3	112			Perforated Liner	2/12/2015	6,905.0	6,907.0	Niobrara, Original Hole
1,780.8	1,782.7	113			Perforated Liner	2/12/2015	6,974.0	6,976.0	Niobrara, Original Hole
3,335.0	3,336.8	114			Perforated Liner	2/12/2015	7,032.0	7,034.0	Niobrara, Original Hole
4,940.0	4,942.0	115			Perforated Liner	2/12/2015	7,098.0	7,100.0	Niobrara, Original Hole
5,012.8	5,014.8	116			Perforated Liner	2/12/2015	7,159.0	7,161.0	Niobrara, Original Hole
5,547.6	5,549.6	117			Perforated Liner	2/12/2015	7,223.0	7,225.0	Niobrara, Original Hole
5,630.2	5,632.2	118			Perforated Liner	2/12/2015	7,286.0	7,288.0	Niobrara, Original Hole
6,013.1	6,015.1	119			Perforated Liner	2/11/2015	7,350.0	7,352.0	Niobrara, Original Hole
6,144.0	6,146.0	120			Perforated Liner	2/11/2015	7,413.0	7,415.0	Niobrara, Original Hole
6,273.0	6,275.0	121			Perforated Liner	2/11/2015	7,476.0	7,478.0	Niobrara, Original Hole
6,461.0	6,463.0	122			Perforated Liner	2/11/2015	7,538.0	7,540.0	Niobrara, Original Hole
6,589.9	6,591.9	123			Perforated Liner	2/11/2015	7,603.0	7,605.0	Niobrara, Original Hole
6,777.9	6,779.9	124			Perforated Liner	2/11/2015	7,662.0	7,664.0	Niobrara, Original Hole
6,907.2	6,909.2	125			Perforated Liner	2/11/2015	7,730.0	7,732.0	Niobrara, Original Hole
7,098.1	7,100.1	126			Perforated Liner	2/11/2015	7,799.0	7,801.0	Niobrara, Original Hole
7,225.1	7,227.1	127			Perforated Liner	2/11/2015	7,857.0	7,859.0	Niobrara, Original Hole
7,413.1	7,415.1	128			Perforated Liner	2/11/2015	7,921.0	7,923.0	Niobrara, Original Hole
7,540.0	7,542.0	129			Perforated Liner	2/11/2015	7,984.0	7,986.0	Niobrara, Original Hole
7,730.0	7,732.0	130			Perforated Liner	2/11/2015	8,048.0	8,050.0	Niobrara, Original Hole
7,858.9	7,860.9	131			Perforated Liner	2/11/2015	8,107.0	8,109.0	Niobrara, Original Hole
8,047.9	8,049.9	132			Perforated Liner	2/11/2015	8,174.0	8,176.0	Niobrara, Original Hole
8,175.9	8,177.9	133			Perforated Liner	2/11/2015	8,238.0	8,240.0	Niobrara, Original Hole
8,365.2	8,367.2	134			Perforated Liner	2/11/2015	8,301.0	8,303.0	Niobrara, Original Hole
8,494.1	8,496.1	135			Perforated Liner	2/11/2015	8,365.0	8,367.0	Niobrara, Original Hole
8,682.1	8,684.1	136			Perforated Liner	2/11/2015	8,428.0	8,430.0	Niobrara, Original Hole
8,811.0	8,813.0	137			Perforated Liner	2/10/2015	8,492.0	8,494.0	Niobrara, Original Hole
8,999.0	9,001.0	138			Perforated Liner	2/10/2015	8,555.0	8,557.0	Niobrara, Original Hole
9,128.0	9,130.0	139			Perforated Liner	2/10/2015	8,619.0	8,621.0	Niobrara, Original Hole
9,316.9	9,318.9	140			Perforated Liner	2/10/2015	8,682.0	8,684.0	Niobrara, Original Hole
9,445.9	9,447.9	141			Perforated Liner	2/10/2015	8,742.0	8,744.0	Niobrara, Original Hole
9,633.9	9,635.9	142			Perforated Liner	2/10/2015	8,809.0	8,811.0	Niobrara, Original Hole
9,761.2	9,763.2	143			Perforated Liner	2/10/2015	8,875.0	8,877.0	Niobrara, Original Hole
9,951.1	9,953.1	144			Perforated Liner	2/10/2015	8,936.0	8,938.0	Niobrara, Original Hole
10,080.1	10,082.1	145			Perforated Liner	2/10/2015	8,999.0	9,001.0	Niobrara, Original Hole
10,268.0	10,270.0	146			Perforated Liner	2/10/2015	9,064.0	9,066.0	Niobrara, Original Hole
10,397.0	10,399.0	147			Perforated Liner	2/10/2015	9,126.0	9,128.0	Niobrara, Original Hole
10,586.0	10,588.0	148			Perforated Liner	2/10/2015	9,190.0	9,192.0	Niobrara, Original Hole
10,714.9	10,716.9	149			Perforated Liner	2/9/2015	9,253.0	9,255.0	Niobrara, Original Hole
10,902.9	10,904.9	150			Perforated Liner	2/9/2015	9,317.0	9,319.0	Niobrara, Original Hole
11,027.9	11,029.9	151			Perforated Liner	2/9/2015	9,380.0	9,382.0	Niobrara, Original Hole
11,220.1	11,222.1	152			Perforated Liner	2/9/2015	9,444.0	9,446.0	Niobrara, Original Hole
11,348.1	11,350.1	153			Perforated Liner	2/9/2015	9,507.0	9,509.0	Niobrara, Original Hole
11,537.1	11,539.1	154			Perforated Liner	2/9/2015	9,570.0	9,572.0	Niobrara, Original Hole
11,666.0	11,668.0	155			Perforated Liner	2/9/2015	9,634.0	9,636.0	Niobrara, Original Hole
11,848.1	11,850.1	156	Perforated Liner	2/9/2015	9,697.0	9,699.0	Niobrara, Original Hole		
11,983.9	11,985.9	157	Perforated Liner	2/9/2015	9,759.0	9,761.0	Niobrara, Original Hole		
12,176.8	12,178.8	158	Perforated Liner	2/9/2015	9,824.0	9,826.0	Niobrara, Original Hole		
12,300.9	12,302.9	159	Perforated Liner	2/9/2015	9,893.0	9,895.0	Niobrara, Original Hole		
12,492.1	12,494.1	160	Perforated Liner	2/9/2015	9,951.0	9,953.0	Niobrara, Original Hole		
12,618.1	12,620.1	161	Perforated Liner	2/9/2015	10,015.0	10,017.0	Niobrara, Original Hole		
12,807.1	12,809.1	162	Perforated Liner	2/9/2015	10,078.0	10,080.0	Niobrara, Original Hole		
12,935.0	12,937.0	163	Perforated Liner	2/9/2015	10,141.0	10,143.0	Niobrara, Original Hole		
13,124.0	13,126.0	164	Perforated Liner	2/9/2015	10,205.0	10,207.0	Niobrara, Original Hole		
13,253.0	13,255.0	165	Perforated Liner	2/9/2015	10,268.0	10,270.0	Niobrara, Original Hole		
13,440.9	13,442.9	166	Perforated Liner	2/9/2015	10,332.0	10,334.0	Niobrara, Original Hole		
13,569.9	13,571.9	167	Perforated Liner	2/9/2015	10,395.0	10,397.0	Niobrara, Original Hole		
13,648.3	13,650.3	168	Perforated Liner	2/9/2015	10,459.0	10,461.0	Niobrara, Original Hole		
			Perforated Liner	2/9/2015	10,522.0	10,524.0	Niobrara, Original Hole		
			Perforated Liner	2/8/2015	10,586.0	10,588.0	Niobrara, Original Hole		
			Perforated Liner	2/8/2015	10,649.0	10,651.0	Niobrara, Original Hole		
			Perforated Liner	2/8/2015	10,713.0	10,715.0	Niobrara, Original Hole		
			Perforated Liner	2/8/2015	10,776.0	10,778.0	Niobrara, Original Hole		
			Perforated Liner	2/8/2015	10,839.0	10,841.0	Niobrara, Original Hole		
			Perforated Liner	2/8/2015	10,903.0	10,905.0	Niobrara, Original Hole		
			Perforated Liner	2/8/2015	10,966.0	10,968.0	Niobrara, Original Hole		
			Perforated Liner	2/8/2015	11,026.0	11,028.0	Niobrara, Original Hole		
			Perforated Liner	2/8/2015	11,093.0	11,095.0	Niobrara, Original Hole		
			Perforated Liner	2/8/2015	11,155.0	11,157.0	Niobrara, Original Hole		
			Perforated Liner	2/8/2015	11,220.0	11,222.0	Niobrara, Original Hole		

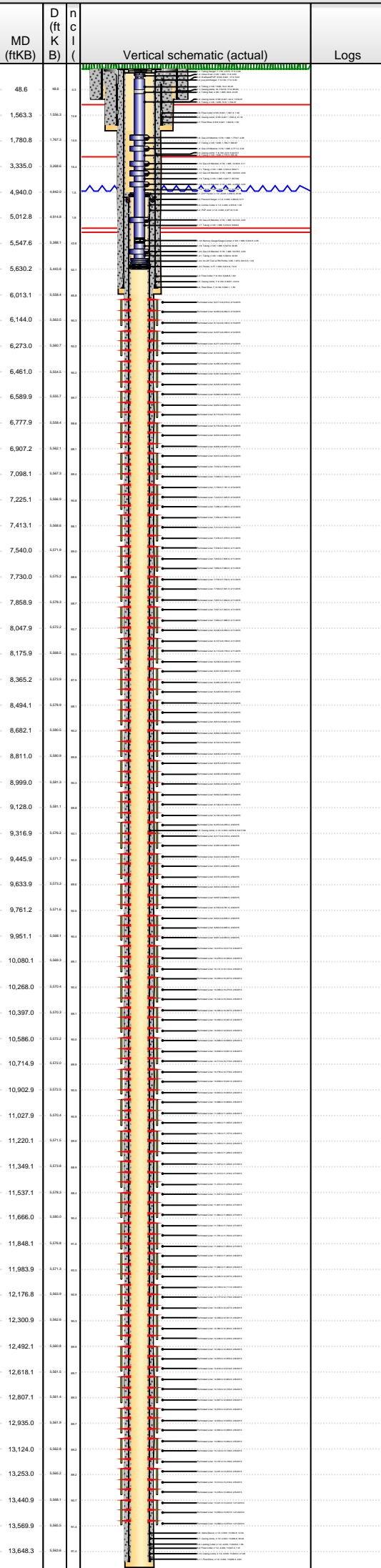


Lease Review All - Frac Summary

Well Name: HORSETAIL 30F-1943

API Number 051233873900	WPC ID 1CO0761016	Well Permit Number	Field Name DJ Horizontal Niobrara	County Weld	State CO
Well Configuration Type Lateral/Horizontal	Orig KB Elv (ft) 4,800.00	Ground Elevation (ft) 4,783.00	Casing Flange Elevation (ft)	Tubing Head Elevation (ft)	Total Depth (ftKB) 13,702.0
Original Spud Date 10/1/2014	Completion Date 2/12/2015	Asset Group Redtail	Responsible Engineer Charles Ohlson	N/S Dist (ft) 2,324.0	N/S Ref FNL
Lot	Quarter 1 SE	Quarter 2 NW	Quarter 3	Quarter 4	E/W Dist (ft) 1,920.0
			Section 30	Section Suffix	E/W Ref FWL
			Section Type	Township 10 N	Township N/S Dir
				Range 57	Range E/W Dir W
					Meridian

Lateral/Horizontal - Original Hole, 8/19/2015 8:51:53 AM



Perforations

Type of Hole	Date	Top (ftKB)	Btm (ftKB)	Zone
Perforated Liner	2/8/2015	11,284.0	11,286.0	Niobrara, Original Hole
Perforated Liner	2/7/2015	11,347.0	11,349.0	Niobrara, Original Hole
Perforated Liner	2/7/2015	11,414.0	11,416.0	Niobrara, Original Hole
Perforated Liner	2/7/2015	11,474.0	11,476.0	Niobrara, Original Hole
Perforated Liner	2/7/2015	11,537.0	11,539.0	Niobrara, Original Hole
Perforated Liner	2/7/2015	11,601.0	11,603.0	Niobrara, Original Hole
Perforated Liner	2/7/2015	11,664.0	11,666.0	Niobrara, Original Hole
Perforated Liner	2/7/2015	11,728.0	11,730.0	Niobrara, Original Hole
Perforated Liner	2/7/2015	11,791.0	11,793.0	Niobrara, Original Hole
Perforated Liner	2/7/2015	11,848.0	11,850.0	Niobrara, Original Hole
Perforated Liner	2/6/2015	11,918.0	11,920.0	Niobrara, Original Hole
Perforated Liner	2/6/2015	11,982.0	11,984.0	Niobrara, Original Hole
Perforated Liner	2/6/2015	12,045.0	12,047.0	Niobrara, Original Hole
Perforated Liner	2/6/2015	12,109.0	12,111.0	Niobrara, Original Hole
Perforated Liner	2/6/2015	12,177.0	12,179.0	Niobrara, Original Hole
Perforated Liner	2/6/2015	12,235.0	12,237.0	Niobrara, Original Hole
Perforated Liner	2/6/2015	12,299.0	12,301.0	Niobrara, Original Hole
Perforated Liner	2/6/2015	12,362.0	12,364.0	Niobrara, Original Hole
Perforated Liner	2/6/2015	12,426.0	12,428.0	Niobrara, Original Hole
Perforated Liner	2/6/2015	12,492.0	12,494.0	Niobrara, Original Hole
Perforated Liner	2/6/2015	12,553.0	12,555.0	Niobrara, Original Hole
Perforated Liner	2/6/2015	12,616.0	12,618.0	Niobrara, Original Hole
Perforated Liner	2/6/2015	12,680.0	12,682.0	Niobrara, Original Hole
Perforated Liner	2/6/2015	12,743.0	12,745.0	Niobrara, Original Hole
Perforated Liner	2/6/2015	12,807.0	12,809.0	Niobrara, Original Hole
Perforated Liner	2/6/2015	12,870.0	12,872.0	Niobrara, Original Hole
Perforated Liner	2/6/2015	12,933.0	12,935.0	Niobrara, Original Hole
Perforated Liner	2/6/2015	12,994.0	12,996.0	Niobrara, Original Hole
Perforated Liner	2/5/2015	13,060.0	13,062.0	Niobrara, Original Hole
Perforated Liner	2/5/2015	13,124.0	13,126.0	Niobrara, Original Hole
Perforated Liner	2/5/2015	13,187.0	13,189.0	Niobrara, Original Hole
Perforated Liner	2/5/2015	13,251.0	13,253.0	Niobrara, Original Hole
Perforated Liner	2/5/2015	13,314.0	13,316.0	Niobrara, Original Hole
Perforated Liner	2/5/2015	13,378.0	13,380.0	Niobrara, Original Hole
Perforated Liner	12/12/2014	13,441.0	13,443.0	Niobrara, Original Hole
Perforated Liner	12/12/2014	13,505.0	13,507.0	Niobrara, Original Hole
Perforated Liner	12/12/2014	13,568.0	13,570.0	Niobrara, Original Hole

Stimulations & Treatments

Sand Frac on 2/5/2015 06:00

Comment
 Treatment End Date: 2/12/2015; Number of staged intervals: 40; Min Frac Gradient: 0.82; # of Perfs: 1440; SlickWater: 26845 bbl; pHaserFrac 22 XL Gel: 85221 bbl; 22 Linear Gel: 11960 bbl; 15% HCL: 929bbl; Fresh Water: 7963 bbl

Total Clean Volu...	Vol Slurry Tot (bbl)	Proppant Desig...	Proppant Frm (lb)	P Max (psi)	Avg Treat...	Avg Treat...	Max Tre...	Frac Gr...
132918.00		6,920,000.0	6,809,908.0	6,987.0	4,056.0	49.80	50.90	0.82

Total Add Amount
 Proppant 20/40 Ottawa 6691476 lb; Proppant 40/70 Ottawa 118432 lb

Stim/Treat Fluids

Fluid Name
pHaserFrac 22 XL Gel; 22 Linear Gel; FreshWater
pHaserFrac22XLGel; 22LinearGel; 15%HCL; FreshWater

Stim/Treat Stages

Interval 1

Stg #	Start Date	Top (ftKB)	Btm (ftKB)	Vol Clean...	Vol Slurry...	Comment
1	2/5/2015	13,441.0	13,570.0	3002.00		SlickWater:913 bbl; pHaserFrac 22 XL Gel:1741 bbl; 22 Linear Gel:298 bbl;15% HCL:24bbl;Fresh Water:26bbl

Stim/Treat Additives

Stg #	Add	Type	Amount	Units	Sand Size
1	Proppant	20/40 Ottawa	104,744.0	lb	20/40
1	Proppant	40/70 Ottawa	2,465.0	lb	40/70

Interval 2

Stg #	Start Date	Top (ftKB)	Btm (ftKB)	Vol Clean...	Vol Slurry...	Comment
2	2/5/2015	13,251.0	13,380.0	3372.00		SlickWater:884 bbl; pHaserFrac 22 XL Gel:1818 bbl; 22 Linear Gel:298 bbl;15% HCL:24bbl;Fresh Water:349bbl

Stim/Treat Additives

Stg #	Add	Type	Amount	Units	Sand Size
2	Proppant	20/40 Ottawa	108,829.0	lb	20/40
2	Proppant	40/70 Ottawa	2,715.0	lb	40/70

Interval 3

Stg #	Start Date	Top (ftKB)	Btm (ftKB)	Vol Clean...	Vol Slurry...	Comment
3	2/5/2015	13,060.0	13,189.0	3162.00		SlickWater:743 bbl; pHaserFrac 22 XL Gel:1796 bbl; 22 Linear Gel:298 bbl;15% HCL:24bbl;Fresh Water:301bbl

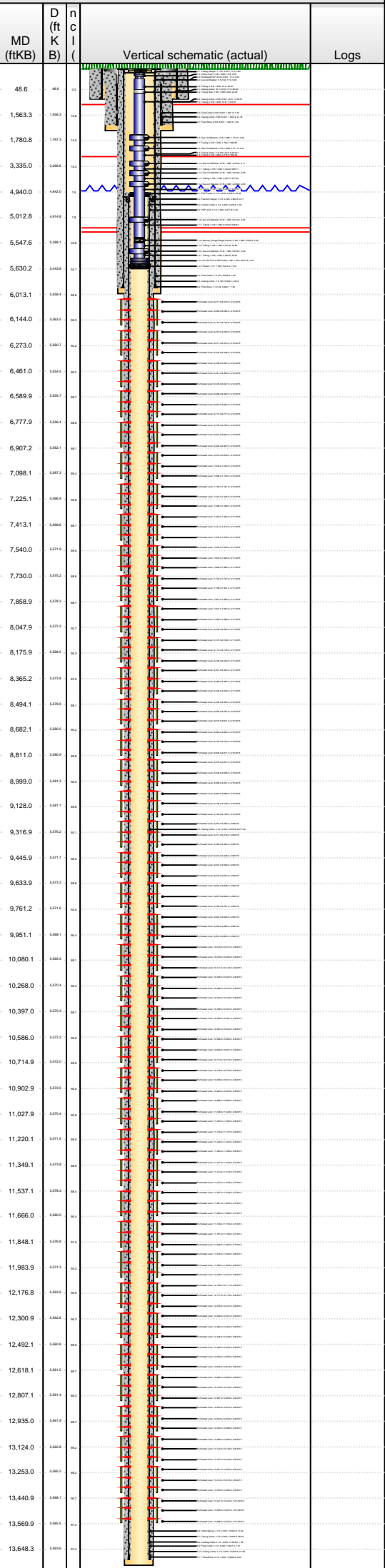


Lease Review All - Frac Summary

Well Name: HORSETAIL 30F-1943

API Number 051233873900	WPC ID 1CO0761016	Well Permit Number	Field Name DJ Horizontal Niobrara	County Weld	State CO
Well Configuration Type Lateral/Horizontal	Orig KB Elv (ft) 4,800.00	Ground Elevation (ft) 4,783.00	Casing Flange Elevation (ft)	Tubing Head Elevation (ft)	Total Depth (ftKB) 13,702.0
Original Spud Date 10/1/2014	Completion Date 2/12/2015	Asset Group Redtail	Responsible Engineer Charles Ohlson	N/S Dist (ft) 2,324.0	N/S Ref FNL
				E/W Dist (ft) 1,920.0	E/W Ref FWL
Lot	Quarter 1 SE	Quarter 2 NW	Quarter 3	Quarter 4	Section 30
					Section Suffix
					Section Type
					Township 10 N
					Township N/S Dir
					Range 57 W
					Range E/W Dir
					Meridian

Lateral/Horizontal - Original Hole, 8/19/2015 8:51:55 AM



Stim/Treat Additives		Add		Type		Amount	Units	Sand Size
3	Proppant			20/40 Ottawa		106,872.0	lb	20/40
3	Proppant			40/70 Ottawa		3,322.0	lb	40/70
Interval 4								
Stg #	Start Date	Top (ftKB)	Btm (ftKB)	Vol Clean...	Vol Slurry...	Comment		
4	2/5/2015	12,870.0	12,996.0	3647.00		SlickWater:861 bbl; pHaserFrac 22 XL Gel:2161 bbl; 22 Linear Gel:308 bbl;15% HCL:24bbl;Fresh Water:293bbl		
Stim/Treat Additives								
4	Proppant			20/40 Ottawa		172,738.0	lb	20/40
4	Proppant			40/70 Ottawa		3,112.0	lb	40/70
Interval 5								
Stg #	Start Date	Top (ftKB)	Btm (ftKB)	Vol Clean...	Vol Slurry...	Comment		
5	2/6/2015	12,680.0	12,809.0	3554.00		SlickWater:689 bbl; pHaserFrac 22 XL Gel:2172 bbl; 22 Linear Gel:303 bbl;15% HCL:24bbl;Fresh Water:366bbl		
Stim/Treat Additives								
5	Proppant			20/40 Ottawa		173,224.0	lb	20/40
5	Proppant			40/70 Ottawa		2,621.0	lb	40/70
Interval 6								
Stg #	Start Date	Top (ftKB)	Btm (ftKB)	Vol Clean...	Vol Slurry...	Comment		
6	2/6/2015	12,492.0	12,618.0	3482.00		SlickWater:694 bbl; pHaserFrac 22 XL Gel:2136 bbl; 22 Linear Gel:317 bbl;15% HCL:24bbl;Fresh Water:311bbl		
Stim/Treat Additives								
6	Proppant			20/40 Ottawa		168,393.0	lb	20/40
6	Proppant			40/70 Ottawa		2,637.0	lb	40/70
Interval 7								
Stg #	Start Date	Top (ftKB)	Btm (ftKB)	Vol Clean...	Vol Slurry...	Comment		
7	2/6/2015	12,299.0	12,428.0	3445.00		SlickWater:696 bbl; pHaserFrac 22 XL Gel:2142 bbl; 22 Linear Gel:298 bbl;15% HCL:24bbl;Fresh Water:286bbl		
Stim/Treat Additives								
7	Proppant			20/40 Ottawa		167,847.0	lb	20/40
7	Proppant			40/70 Ottawa		1,990.0	lb	40/70
Interval 8								
Stg #	Start Date	Top (ftKB)	Btm (ftKB)	Vol Clean...	Vol Slurry...	Comment		
8	2/6/2015	12,109.0	12,237.0	3465.00		SlickWater:710 bbl; pHaserFrac 22 XL Gel:2150 bbl; 22 Linear Gel:297 bbl;15% HCL:24bbl;Fresh Water:284bbl		
Stim/Treat Additives								
8	Proppant			20/40 Ottawa		170,140.0	lb	20/40
8	Proppant			40/70 Ottawa		3,337.0	lb	40/70
Interval 9								
Stg #	Start Date	Top (ftKB)	Btm (ftKB)	Vol Clean...	Vol Slurry...	Comment		
9	2/7/2015	11,918.0	12,047.0	3471.00		SlickWater:682 bbl; pHaserFrac 22 XL Gel:2139 bbl; 22 Linear Gel:302 bbl;15% HCL:24bbl;Fresh Water:325bbl		
Stim/Treat Additives								
9	Proppant			20/40 Ottawa		175,212.0	lb	20/40
9	Proppant			40/70 Ottawa		3,013.0	lb	40/70
Interval 10								
Stg #	Start Date	Top (ftKB)	Btm (ftKB)	Vol Clean...	Vol Slurry...	Comment		
10	2/7/2015	11,728.0	11,850.0	3508.00		SlickWater:684 bbl; pHaserFrac 22 XL Gel:2216 bbl; 22 Linear Gel:316 bbl;15% HCL:24bbl;Fresh Water:268bbl		
Stim/Treat Additives								
10	Proppant			20/40 Ottawa		169,972.0	lb	20/40
10	Proppant			40/70 Ottawa		2,878.0	lb	40/70
Interval 11								
Stg #	Start Date	Top (ftKB)	Btm (ftKB)	Vol Clean...	Vol Slurry...	Comment		
11	2/7/2015	11,537.0	11,666.0	3381.00		SlickWater:671 bbl; pHaserFrac 22 XL Gel:2132 bbl; 22 Linear Gel:298 bbl;15% HCL:24bbl;Fresh Water:256bbl		
Stim/Treat Additives								
11	Proppant			20/40 Ottawa		169,088.0	lb	20/40
11	Proppant			40/70 Ottawa		3,059.0	lb	40/70
Interval 12								
Stg #	Start Date	Top (ftKB)	Btm (ftKB)	Vol Clean...	Vol Slurry...	Comment		
12	2/7/2015	11,347.0	11,476.0	3390.00		SlickWater:667 bbl; pHaserFrac 22 XL Gel:2138 bbl; 22 Linear Gel:298 bbl;15% HCL:24bbl;Fresh Water:264bbl		
Stim/Treat Additives								
12	Proppant			20/40 Ottawa		172,418.0	lb	20/40

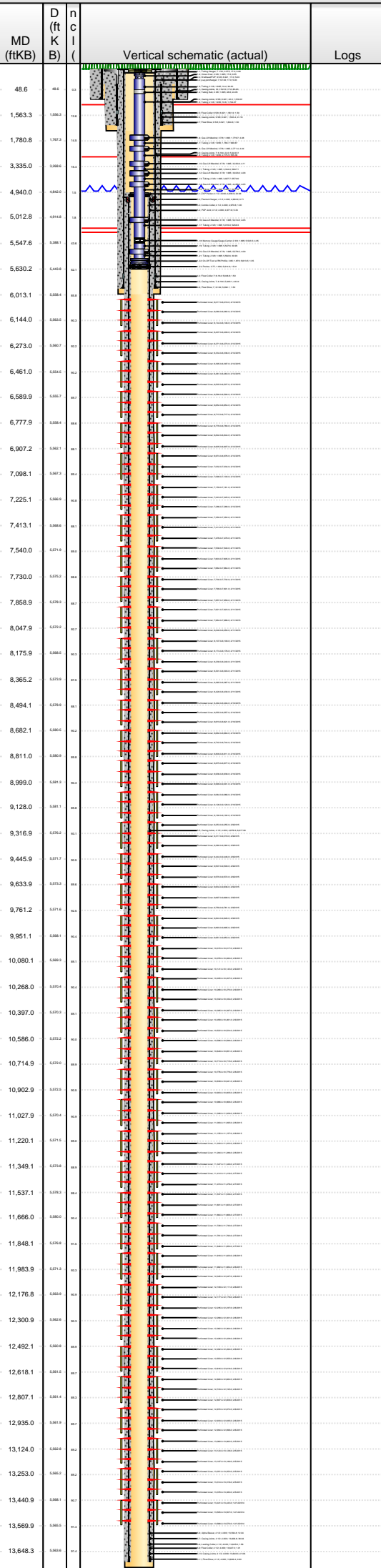


Lease Review All - Frac Summary

Well Name: HORSETAIL 30F-1943

API Number 051233873900	WPC ID 1CO0761016	Well Permit Number	Field Name DJ Horizontal Niobrara	County Weld	State CO
Well Configuration Type Lateral/Horizontal	Orig KB Elv (ft) 4,800.00	Ground Elevation (ft) 4,783.00	Casing Flange Elevation (ft)	Tubing Head Elevation (ft)	Total Depth (ftKB) 13,702.0
Original Spud Date 10/1/2014	Completion Date 2/12/2015	Asset Group Redtail	Responsible Engineer Charles Ohlson	N/S Dist (ft) 2,324.0	N/S Ref FNL
Lot	Quarter 1 SE	Quarter 2 NW	Quarter 3	Quarter 4	E/W Dist (ft) 1,920.0
Section 30	Section Suffix	Section Type	Township 10 N	Township N/S Dir	Range 57 W
Meridian					

Lateral/Horizontal - Original Hole, 8/19/2015 8:51:57 AM



Stim/Treat Additives					
Stg #	Add	Type	Amount	Units	Sand Size
12	Proppant	40/70 Ottawa	3,294.0	lb	40/70
Interval 13					
Stg #	Start Date	Top (ftKB)	Btm (ftKB)	Vol Clean...	Vol Slurry...
13	2/7/2015	11,155.0	11,286.0	3849.00	
Comment SlickWater:1054 bbl; pHaserFrac 22 XL Gel:2226 bbl; 22 Linear Gel:260 bbl;15% HCL:24bbl;Fresh Water:285bbl					
Stim/Treat Additives					
Stg #	Add	Type	Amount	Units	Sand Size
13	Proppant	20/40 Ottawa	166,027.0	lb	20/40
13	Proppant	40/70 Ottawa	2,889.0	lb	40/70
Interval 14					
Stg #	Start Date	Top (ftKB)	Btm (ftKB)	Vol Clean...	Vol Slurry...
14	2/8/2015	10,966.0	11,095.0	3466.00	
Comment SlickWater:667 bbl; pHaserFrac 22 XL Gel:2160 bbl; 22 Linear Gel:304 bbl;15% HCL:24bbl;Fresh Water:312bbl					
Stim/Treat Additives					
Stg #	Add	Type	Amount	Units	Sand Size
14	Proppant	20/40 Ottawa	170,451.0	lb	20/40
14	Proppant	40/70 Ottawa	3,031.0	lb	40/70
Interval 15					
Stg #	Start Date	Top (ftKB)	Btm (ftKB)	Vol Clean...	Vol Slurry...
15	2/8/2015	10,776.0	10,905.0	3334.00	
Comment SlickWater:673 bbl; pHaserFrac 22 XL Gel:2145 bbl; 22 Linear Gel:292 bbl;15% HCL:24bbl;Fresh Water:201bbl					
Stim/Treat Additives					
Stg #	Add	Type	Amount	Units	Sand Size
15	Proppant	20/40 Ottawa	167,209.0	lb	20/40
15	Proppant	40/70 Ottawa	2,372.0	lb	40/70
Interval 16					
Stg #	Start Date	Top (ftKB)	Btm (ftKB)	Vol Clean...	Vol Slurry...
16	2/8/2015	10,586.0	10,715.0	3630.00	
Comment SlickWater:661 bbl; pHaserFrac 22 XL Gel:2152 bbl; 22 Linear Gel:298 bbl;15% HCL:24bbl;Fresh Water:494bbl					
Stim/Treat Additives					
Stg #	Add	Type	Amount	Units	Sand Size
16	Proppant	20/40 Ottawa	163,009.0	lb	20/40
16	Proppant	40/70 Ottawa	3,022.0	lb	40/70
Interval 17					
Stg #	Start Date	Top (ftKB)	Btm (ftKB)	Vol Clean...	Vol Slurry...
17	2/8/2015	10,395.0	10,524.0	3387.00	
Comment SlickWater:654 bbl; pHaserFrac 22 XL Gel:2173 bbl; 22 Linear Gel:299 bbl;15% HCL:24bbl;Fresh Water:239bbl					
Stim/Treat Additives					
Stg #	Add	Type	Amount	Units	Sand Size
17	Proppant	20/40 Ottawa	166,614.0	lb	20/40
17	Proppant	40/70 Ottawa	3,324.0	lb	40/70
Interval 18					
Stg #	Start Date	Top (ftKB)	Btm (ftKB)	Vol Clean...	Vol Slurry...
18	2/9/2015	10,205.0	10,334.0	3449.00	
Comment SlickWater:650 bbl; pHaserFrac 22 XL Gel:2200 bbl; 22 Linear Gel:297 bbl;15% HCL:24bbl;Fresh Water:278bbl					
Stim/Treat Additives					
Stg #	Add	Type	Amount	Units	Sand Size
18	Proppant	20/40 Ottawa	170,855.0	lb	20/40
18	Proppant	40/70 Ottawa	3,614.0	lb	40/70
Interval 19					
Stg #	Start Date	Top (ftKB)	Btm (ftKB)	Vol Clean...	Vol Slurry...
19	2/9/2015	10,015.0	10,143.0	3330.00	
Comment SlickWater:647 bbl; pHaserFrac 22 XL Gel:2140 bbl; 22 Linear Gel:298 bbl;15% HCL:0bbl;Fresh Water:244bbl					
Stim/Treat Additives					
Stg #	Add	Type	Amount	Units	Sand Size
19	Proppant	20/40 Ottawa	162,243.0	lb	20/40
19	Proppant	40/70 Ottawa	1,642.0	lb	40/70
Interval 20					
Stg #	Start Date	Top (ftKB)	Btm (ftKB)	Vol Clean...	Vol Slurry...
20	2/9/2015	9,824.0	9,953.0	3303.00	
Comment SlickWater:654 bbl; pHaserFrac 22 XL Gel:2148 bbl; 22 Linear Gel:298 bbl;15% HCL:24bbl;Fresh Water:179bbl					
Stim/Treat Additives					
Stg #	Add	Type	Amount	Units	Sand Size
20	Proppant	20/40 Ottawa	175,318.0	lb	20/40
20	Proppant	40/70 Ottawa	3,044.0	lb	40/70
Interval 21					
Stg #	Start Date	Top (ftKB)	Btm (ftKB)	Vol Clean...	Vol Slurry...
21	2/9/2015	9,634.0	9,761.0	3299.00	
Comment SlickWater:644 bbl; pHaserFrac 22 XL Gel:2152 bbl; 22 Linear Gel:298 bbl;15% HCL:24bbl;Fresh Water:182bbl					
Stim/Treat Additives					
Stg #	Add	Type	Amount	Units	Sand Size
21	Proppant	20/40 Ottawa	176,957.0	lb	20/40
21	Proppant	40/70 Ottawa	2,882.0	lb	40/70

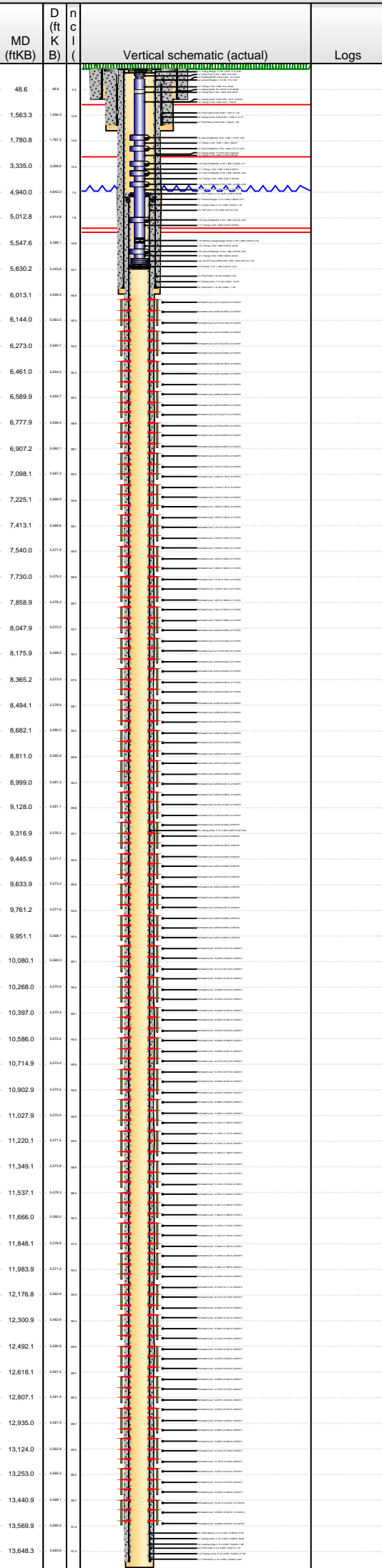


Lease Review All - Frac Summary

Well Name: HORSETAIL 30F-1943

API Number 051233873900	WPC ID 1CO0761016	Well Permit Number	Field Name DJ Horizontal Niobrara	County Weld	State CO
Well Configuration Type Lateral/Horizontal	Orig KB Elv (ft) 4,800.00	Ground Elevation (ft) 4,783.00	Casing Flange Elevation (ft)	Tubing Head Elevation (ft)	Total Depth (ftKB) 13,702.0
Original Spud Date 10/1/2014	Completion Date 2/12/2015	Asset Group Redtail	Responsible Engineer Charles Ohlson	N/S Dist (ft) 2,324.0	N/S Ref FNL
Lot	Quarter 1 SE	Quarter 2 NW	Quarter 3	Quarter 4	Section 30
	Section Suffix	Section Type	Township 10 N	Township N/S Dir	Range 57 W
				Range E/W Dir	Meridian

Lateral/Horizontal - Original Hole, 8/19/2015 8:52:00 AM



Stim/Treat Stages							
Interval	Stg #	Start Date	Top (ftKB)	Btm (ftKB)	Vol Clean...	Vol Slurry...	Comment
Interval 22	22	2/9/2015	9,444.0	9,572.0	3298.00		SlickWater:576 bbl; pHaserFrac 22 XL Gel:2212 bbl; 22 Linear Gel:302 bbl;15% HCL:24bbl;Fresh Water:185bbl
Stim/Treat Additives							
Stg #	Add	Type	Amount	Units	Sand Size		
22	Proppant	20/40 Ottawa	166,575.0	lb	20/40		
22	Proppant	40/70 Ottawa	2,790.0	lb	40/70		
Interval 23	23	2/10/2015	9,253.0	9,382.0	3347.00		SlickWater:637 bbl; pHaserFrac 22 XL Gel:2155 bbl; 22 Linear Gel:298 bbl;15% HCL:24bbl;Fresh Water:233bbl
Stim/Treat Additives							
Stg #	Add	Type	Amount	Units	Sand Size		
23	Proppant	20/40 Ottawa	180,042.0	lb	20/40		
23	Proppant	40/70 Ottawa	3,505.0	lb	40/70		
Interval 24	24	2/10/2015	9,064.0	9,192.0	3256.00		SlickWater:633 bbl; pHaserFrac 22 XL Gel:2152 bbl; 22 Linear Gel:298 bbl;15% HCL:24bbl;Fresh Water:150bbl
Stim/Treat Additives							
Stg #	Add	Type	Amount	Units	Sand Size		
24	Proppant	20/40 Ottawa	175,935.0	lb	20/40		
24	Proppant	40/70 Ottawa	2,692.0	lb	40/70		
Interval 25	25	2/10/2015	8,875.0	9,001.0	3236.00		SlickWater:630 bbl; pHaserFrac 22 XL Gel:2138 bbl; 22 Linear Gel:298 bbl;15% HCL:24bbl;Fresh Water:147bbl
Stim/Treat Additives							
Stg #	Add	Type	Amount	Units	Sand Size		
25	Proppant	20/40 Ottawa	173,243.0	lb	20/40		
25	Proppant	40/70 Ottawa	3,034.0	lb	40/70		
Interval 26	26	2/10/2015	8,682.0	8,811.0	3285.00		SlickWater:627 bbl; pHaserFrac 22 XL Gel:2193 bbl; 22 Linear Gel:298 bbl;15% HCL:24bbl;Fresh Water:144bbl
Stim/Treat Additives							
Stg #	Add	Type	Amount	Units	Sand Size		
26	Proppant	20/40 Ottawa	174,276.0	lb	20/40		
26	Proppant	40/70 Ottawa	3,062.0	lb	40/70		
Interval 27	27	2/10/2015	8,492.0	8,621.0	3324.00		SlickWater:662 bbl; pHaserFrac 22 XL Gel:2170 bbl; 22 Linear Gel:304 bbl;15% HCL:24bbl;Fresh Water:165bbl
Stim/Treat Additives							
Stg #	Add	Type	Amount	Units	Sand Size		
27	Proppant	20/40 Ottawa	175,032.0	lb	20/40		
27	Proppant	40/70 Ottawa	3,420.0	lb	40/70		
Interval 28	28	2/10/2015	8,301.0	8,430.0	3250.00		SlickWater:621 bbl; pHaserFrac 22 XL Gel:2148 bbl; 22 Linear Gel:306 bbl;15% HCL:24bbl;Fresh Water:152bbl
Stim/Treat Additives							
Stg #	Add	Type	Amount	Units	Sand Size		
28	Proppant	20/40 Ottawa	176,989.0	lb	20/40		
28	Proppant	40/70 Ottawa	3,081.0	lb	40/70		
Interval 29	29	2/11/2015	8,107.0	8,240.0	3217.00		SlickWater:618 bbl; pHaserFrac 22 XL Gel:2138 bbl; 22 Linear Gel:298 bbl;15% HCL:24bbl;Fresh Water:139bbl
Stim/Treat Additives							
Stg #	Add	Type	Amount	Units	Sand Size		
29	Proppant	20/40 Ottawa	179,313.0	lb	20/40		
29	Proppant	40/70 Ottawa	3,007.0	lb	40/70		
Interval 30	30	2/11/2015	7,921.0	8,050.0	3191.00		SlickWater:615 bbl; pHaserFrac 22 XL Gel:2142 bbl; 22 Linear Gel:298 bbl;15% HCL:24bbl;Fresh Water:112bbl
Stim/Treat Additives							
Stg #	Add	Type	Amount	Units	Sand Size		
30	Proppant	20/40 Ottawa	175,131.0	lb	20/40		
30	Proppant	40/70 Ottawa	2,962.0	lb	40/70		

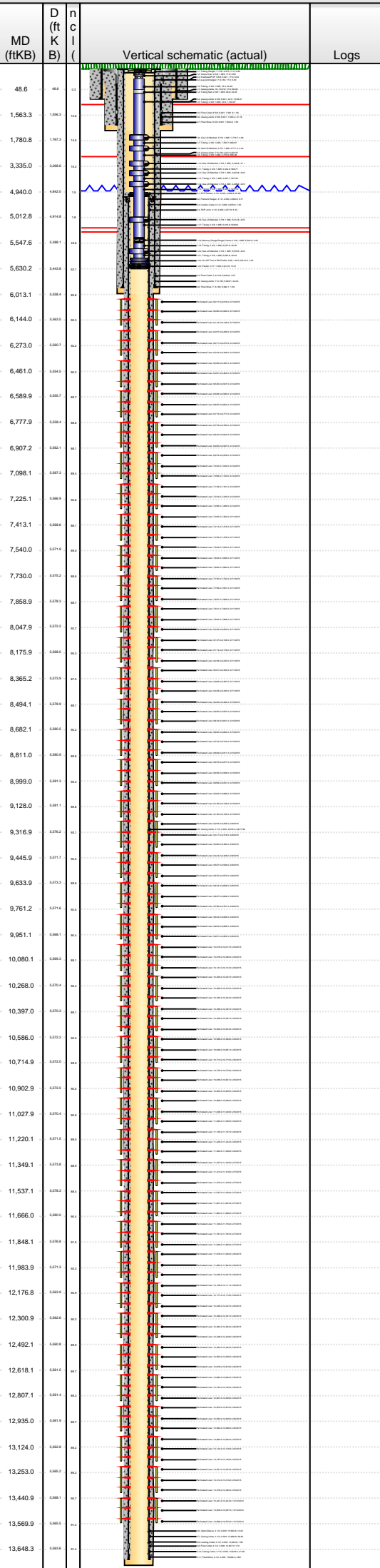


Lease Review All - Frac Summary

Well Name: HORSETAIL 30F-1943

API Number 051233873900	WPC ID 1CO0761016	Well Permit Number	Field Name DJ Horizontal Niobrara	County Weld	State CO
Well Configuration Type Lateral/Horizontal	Orig KB Elv (ft) 4,800.00	Ground Elevation (ft) 4,783.00	Casing Flange Elevation (ft)	Tubing Head Elevation (ft)	Total Depth (ftKB) 13,702.0
Original Spud Date 10/1/2014	Completion Date 2/12/2015	Asset Group Redtail	Responsible Engineer Charles Ohlson	N/S Dist (ft) 2,324.0	N/S Ref FNL
				E/W Dist (ft) 1,920.0	E/W Ref FWL
Lot	Quarter 1 SE	Quarter 2 NW	Quarter 3	Quarter 4	Section 30
					Section Suffix
					Section Type
					Township 10 N
					Township N/S Dir
					Range 57 W
					Range E/W Dir
					Meridian

Lateral/Horizontal - Original Hole, 8/19/2015 8:52:02 AM



Stim/Treat Stages							
Interval	Stg #	Start Date	Top (ftKB)	Btm (ftKB)	Vol Clean...	Vol Slurry...	Comment
Interval 31	31	2/11/2015	7,730.0	7,859.0	3174.00		SlickWater:611 bbl; pHaserFrac 22 XL Gel:2149 bbl; 22 Linear Gel:297 bbl;15% HCL:24bbl;Fresh Water:94bbl
Stim/Treat Additives							
Stg #	Add	Type	Amount	Units	Sand Size		
31	Proppant	20/40 Ottawa	167,884.0	lb	20/40		
31	Proppant	40/70 Ottawa	3,045.0	lb	40/70		
Interval 32	32	2/11/2015	7,538.0	7,664.0	3206.00		SlickWater:617 bbl; pHaserFrac 22 XL Gel:2150 bbl; 22 Linear Gel:298 bbl;15% HCL:24bbl;Fresh Water:118bbl
Stim/Treat Additives							
Stg #	Add	Type	Amount	Units	Sand Size		
32	Proppant	20/40 Ottawa	171,422.0	lb	20/40		
32	Proppant	40/70 Ottawa	2,877.0	lb	40/70		
Interval 33	33	2/11/2015	7,350.0	7,478.0	3169.00		SlickWater:606 bbl; pHaserFrac 22 XL Gel:2158 bbl; 22 Linear Gel:298 bbl;15% HCL:24bbl;Fresh Water:82bbl
Stim/Treat Additives							
Stg #	Add	Type	Amount	Units	Sand Size		
33	Proppant	20/40 Ottawa	179,067.0	lb	20/40		
33	Proppant	40/70 Ottawa	2,991.0	lb	40/70		
Interval 34	34	2/11/2015	7,159.0	7,288.0	3193.00		SlickWater:624 bbl; pHaserFrac 22 XL Gel:2144 bbl; 22 Linear Gel:297 bbl;15% HCL:24bbl;Fresh Water:104bbl
Stim/Treat Additives							
Stg #	Add	Type	Amount	Units	Sand Size		
34	Proppant	20/40 Ottawa	176,878.0	lb	20/40		
34	Proppant	40/70 Ottawa	3,697.0	lb	40/70		
Interval 35	35	2/12/2015	6,974.0	7,100.0	3155.00		SlickWater:611 bbl; pHaserFrac 22 XL Gel:2145 bbl; 22 Linear Gel:299 bbl;15% HCL:24bbl;Fresh Water:77bbl
Stim/Treat Additives							
Stg #	Add	Type	Amount	Units	Sand Size		
35	Proppant	20/40 Ottawa	175,729.0	lb	20/40		
35	Proppant	40/70 Ottawa	3,422.0	lb	40/70		
Interval 36	36	2/12/2015	6,778.0	6,907.0	3118.00		SlickWater:599 bbl; pHaserFrac 22 XL Gel:2129 bbl; 22 Linear Gel:297 bbl;15% HCL:24bbl;Fresh Water:69bbl
Stim/Treat Additives							
Stg #	Add	Type	Amount	Units	Sand Size		
36	Proppant	20/40 Ottawa	172,268.0	lb	20/40		
36	Proppant	40/70 Ottawa	2,698.0	lb	40/70		
Interval 37	37	2/12/2015	6,588.0	6,717.0	3132.00		SlickWater:596 bbl; pHaserFrac 22 XL Gel:2145 bbl; 22 Linear Gel:308 bbl;15% HCL:24bbl;Fresh Water:59bbl
Stim/Treat Additives							
Stg #	Add	Type	Amount	Units	Sand Size		
37	Proppant	20/40 Ottawa	171,311.0	lb	20/40		
37	Proppant	40/70 Ottawa	2,801.0	lb	40/70		
Interval 38	38	2/12/2015	6,395.0	6,527.0	3188.00		SlickWater:593 bbl; pHaserFrac 22 XL Gel:2209 bbl; 22 Linear Gel:298 bbl;15% HCL:24bbl;Fresh Water:64bbl
Stim/Treat Additives							
Stg #	Add	Type	Amount	Units	Sand Size		
38	Proppant	20/40 Ottawa	172,873.0	lb	20/40		
38	Proppant	40/70 Ottawa	3,043.0	lb	40/70		
Interval 39	39	2/12/2015	6,207.0	6,336.0	3124.00		SlickWater:589 bbl; pHaserFrac 22 XL Gel:2145 bbl; 22 Linear Gel:297 bbl;15% HCL:24bbl;Fresh Water:69bbl
Stim/Treat Additives							
Stg #	Add	Type	Amount	Units	Sand Size		
39	Proppant	20/40 Ottawa	167,557.0	lb	20/40		
39	Proppant	40/70 Ottawa	2,720.0	lb	40/70		

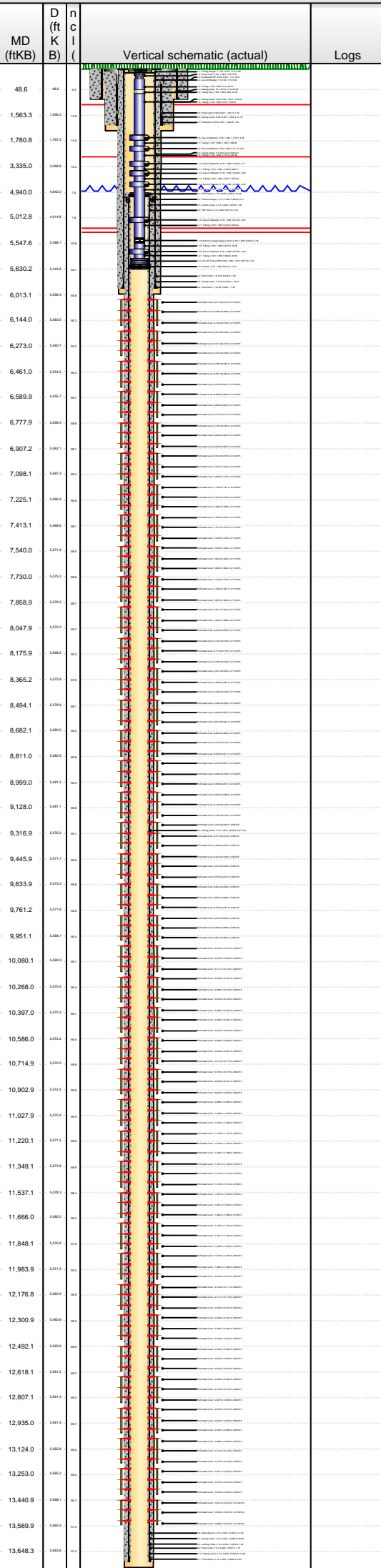


Lease Review All - Frac Summary

Well Name: HORSETAIL 30F-1943

API Number 051233873900	WPC ID 1CO0761016	Well Permit Number	Field Name DJ Horizontal Niobrara	County Weld	State CO
Well Configuration Type Lateral/Horizontal	Orig KB Elv (ft) 4,800.00	Ground Elevation (ft) 4,783.00	Casing Flange Elevation (ft)	Tubing Head Elevation (ft)	Total Depth (ftKB) 13,702.0
Original Spud Date 10/1/2014	Completion Date 2/12/2015	Asset Group Redtail	Responsible Engineer Charles Ohlson	N/S Dist (ft) 2,324.0	N/S Ref FNL
Lot	Quarter 1 SE	Quarter 2 NW	Quarter 3	Quarter 4	E/W Dist (ft) 1,920.0
			Section 30	Section Suffix	Section Type
			Township 10 N	Township N/S Dir	Range 57 W
				Meridian	

Lateral/Horizontal - Original Hole, 8/19/2015 8:52:04 AM



Stim/Treat Stages

Interval	Stg #	Start Date	Top (ftKB)	Btm (ftKB)	Vol Clean...	Vol Slurry...	Comment
Interval 40	40	2/12/2015	6,017.0	6,146.0	3129.00		SlickWater:584 bbl; pHaserFrac 22 XL Gel:2165 bbl; 22 Linear Gel:298 bbl; 15% HCL:24bbl; Fresh Water:58bbl

Stg #	Add	Type	Amount	Units	Sand Size
40	Proppant	20/40 Ottawa	181,791.0	lb	20/40
40	Proppant	40/70 Ottawa	3,322.0	lb	40/70

Tubing - Production set at 5,630.2ftKB on 4/18/2015 06:00

Set Depth (ftKB)	Comment	Run Date	Pull Date
5,630.2		4/18/2015	

Item Des	OD (in)	ID (in)	Len (ft)	Top (ftKB)	Btm (ftKB)
Tubing Hanger	7 1/16	2.375	0.80	17.0	17.8
Cross Over	2 3/8	1.995	0.55	17.8	18.3
Tubing	2 3/8	1.995	30.20	18.3	48.5
Tubing Sub	2 3/8	1.995	24.05	48.5	72.6
Tubing	2 3/8	1.995	1,704.07	72.6	1,776.7
Gas Lift Mandrel	3 7/8	1.995	4.08	1,776.7	1,780.8
Tubing	2 3/8	1.995	990.67	1,780.8	2,771.4
Gas Lift Mandrel	3 7/8	1.995	4.04	2,771.4	2,775.5
Tubing	2 3/8	1.995	555.36	2,775.5	3,330.8
Gas Lift Mandrel	3 7/8	1.995	4.11	3,330.8	3,334.9
Tubing	2 3/8	1.995	588.71	3,334.9	3,923.6
Gas Lift Mandrel	3 7/8	1.995	4.08	3,923.6	3,927.7
Tubing	2 3/8	1.995	557.90	3,927.7	4,485.6
Gas Lift Mandrel	3 7/8	1.995	4.05	4,485.6	4,489.7
Tubing	2 3/8	1.995	523.16	4,489.7	5,012.8
Gas Lift Mandrel	3 7/8	1.995	4.05	5,012.8	5,016.9
Tubing	2 3/8	1.995	526.63	5,016.9	5,543.5
Memory Gauge/Gauge Carrier	2 3/8	1.995	4.05	5,543.5	5,547.6
Tubing	2 3/8	1.995	30.95	5,547.6	5,578.5
Gas Lift Mandrel	3 7/8	1.995	4.09	5,578.5	5,582.6
Tubing	2 3/8	1.995	30.93	5,582.6	5,613.5
On-Off Tool w/ RN Profile	3.65	1.870	1.35	5,613.5	5,614.9
Packer	3.771	1.930	15.31	5,614.9	5,630.2

Rod Strings

Item Des	OD (in)	Len (ft)	Top (ftKB)	Btm (ftKB)

Other Strings

Item Des	OD (in)	Len (ft)	Top (ftKB)	Btm (ftKB)

Other In Hole

Des	OD (in)	Run Date	Pull Date	Top (ftKB)	Btm (ftKB)
CFP	4	2/13/2015	4/10/2015	6,176.0	6,178.0
CFP	4	2/12/2015	4/10/2015	6,366.0	6,368.0
CFP	4	2/12/2015	4/10/2015	6,556.0	6,558.0
CFP	4	2/12/2015	4/10/2015	6,747.0	6,749.0
CFP	4	2/12/2015	4/10/2015	6,937.0	6,939.0
CFP	4	2/12/2015	4/10/2015	7,127.0	7,129.0
CFP	4	2/12/2015	4/10/2015	7,318.0	7,320.0
CFP	4	2/11/2015	4/10/2015	7,508.0	7,510.0
CFP	4	2/11/2015	4/10/2015	7,699.0	7,701.0
CFP	4	2/11/2015	4/10/2015	7,889.0	7,891.0
CFP	4	2/11/2015	4/10/2015	8,079.0	8,081.0
CFP	4	2/11/2015	4/10/2015	8,270.0	8,272.0
CFP	4	2/11/2015	4/10/2015	8,460.0	8,462.0
CFP	4	2/10/2015	4/10/2015	8,650.0	8,652.0
CFP	4	2/10/2015	4/10/2015	8,841.0	8,843.0
CFP	4	2/10/2015	4/10/2015	9,031.0	9,033.0
CFP	4	2/10/2015	4/10/2015	9,221.0	9,223.0
CFP	4	2/9/2015	4/10/2015	9,412.0	9,414.0
CFP	4	2/9/2015	4/10/2015	9,602.0	9,604.0
CFP	4	2/9/2015	4/11/2015	9,792.0	9,794.0
CFP	4	2/9/2015	4/11/2015	9,983.0	9,985.0
CFP	4	2/9/2015	4/11/2015	10,173.0	10,175.0
CFP	4	2/9/2015	4/11/2015	10,364.0	10,366.0
CFP	4	2/9/2015	4/11/2015	10,554.0	10,556.0
CFP	4	2/8/2015	4/11/2015	10,739.0	10,741.0
CFP	4	2/8/2015	4/11/2015	10,935.0	10,937.0

