



Kerr-McGee Oil & Gas Onshore LP

A subsidiary of Anadarko Petroleum Corporation

1099 18th Street
Denver, CO 80202
720-929-6000

July 22, 2015

Matt Lepore
Director, Colorado Oil and Gas Conservation Commission
Department of Natural Resources
The Chancery Building
1120 Lincoln Street, Suite 801
Denver, CO 80203

Re: **30 Day Certification Letter - 318A.e**
LAND 37N-32HZ (Doc 400871253)
Township 2 North, Range 66 West
Section 32: NWNE
Unit Acreage: 480 acres
Unit Spacing: 02N66W Sec 29 S2SE
02N66W Sec 32 E2
01N66W Sec 05 N2NE
Weld County, Colorado

Dear Director Lepore:

Kerr McGee Oil and Gas Onshore LP ("KMG") hereby certifies that KMG owns one hundred percent (100%) of the leasehold interest in the mineral rights in the proposed spacing unit. KMG hereby respectfully requests approval of this boundary well.

If you have any questions or issues regarding this permit, please contact our office.

Sincerely,

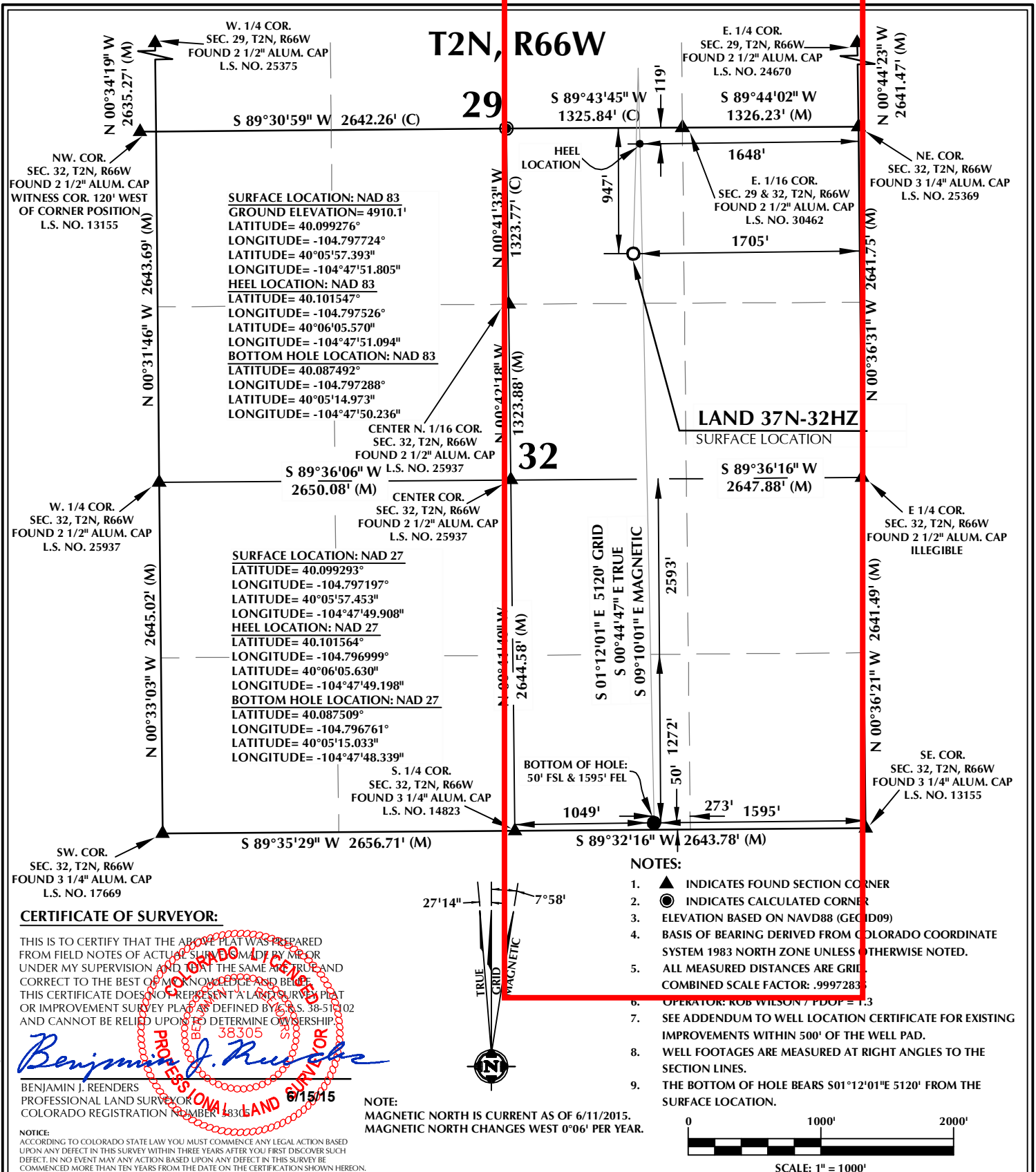
Kerr-McGee Oil and Gas Onshore LP

A handwritten signature in blue ink that reads "RPowers".

Ronett Powers
Regulatory Analyst II

Enclosure

PROPOSED SPACING UNIT



K:\LAND\2013\2013.113 COLORADO T2N66W SEC32\PLAT\LAND FED 15C-32HZ.dwg, 6/16/2015 5:15:16 PM, ben

WELL PAD - LAND 15C-32HZ

LAND 37N-32HZ
WELL LOCATION CERTIFICATE
947' FNL & 1705' FEL NWNE (SURFACE)
119' FNL & 1648' FEL NWNE (HEEL)
50' FSL & 1595' FEL SWSE (BOTTOM)
LOCATED IN SECTION 32
T2N, R66W, 6TH P.M.
WELD COUNTY, COLORADO

**Kerr-McGee Oil &
Gas Onshore L.P.**

1099 18th Street
Denver, Colorado 80202



CONSULTING, LLC

SHERIDAN OFFICE
1095 Saberton Avenue
Sheridan, Wyoming 82801
Phone 307-674-0609

LOVELAND OFFICE
1635 Foxtrail Drive, Suite 204
Loveland, Colorado 80538
Phone 970-776-4331

DRAFTED BY:	MDZ	CHECKED BY:	BJR
DATE DRAFTED:	6/15/15	DATE SURVEYED:	3/24/15
REVISED:		FILE NAME:	13-113