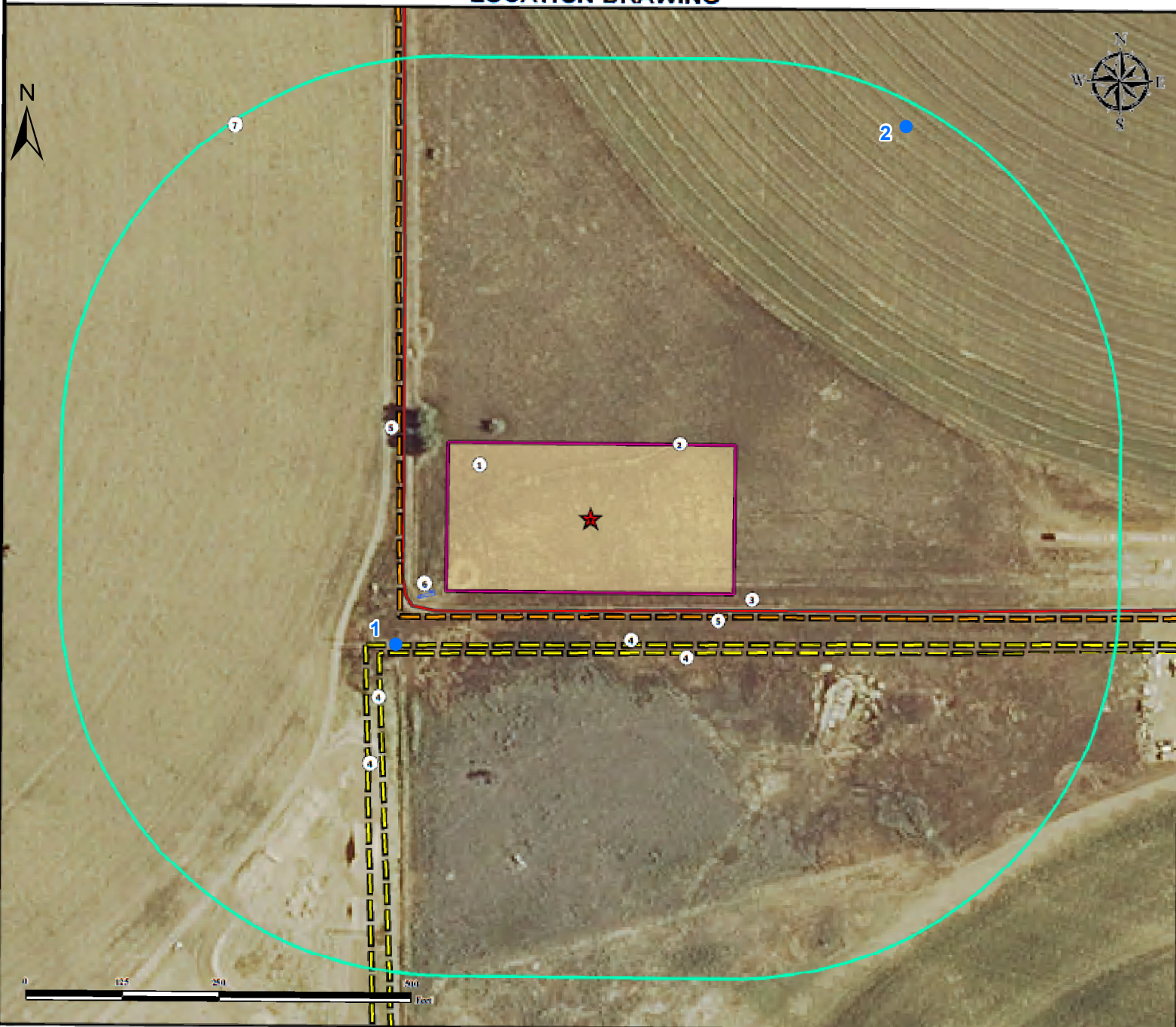


SARCHET 15N-20HZ FACILITY LOCATION DRAWING



** All measurements are made from nearest facility edge **



1. Proposed SARCHET 15N-20HZ FACILITY.
2. Operational Disturbance Area.
3. Private Road is $\pm 20'$ S.
4. Powerlines are $\pm 64'$ S, $\pm 77'$ S, $\pm 119'$ SW, and $\pm 125'$ SW.
5. Fences are $\pm 28'$ S and $\pm 60'$ W.
6. Catch Basin is $\pm 14'$ W.
7. 500' Radius.

Legend

- Proposed Facility
- Disturbance Area
- 500' Radius
- Catch Basin

- Private Road
- Powerline
- Fence

1 - Water Well
Permit 202
2 - Water Well
Permit 44554

Reference Location



Lat: 40.124465° Long: -104.687048° (NAD83)
Elevation: 4927 Feet
FNL: 2540 FEL: 2414

Surface Use: Irrigated Crop

Nearest Building Unit: >1000' NW



FIELD DATE:
11-05-14

DRAWING DATE:
03-05-15

BY:
DRF

CHECKED BY:
CSG

SITE NAME:

SARCHET 15N-20HZ FACILITY

SURFACE LOCATION:

SW1/4 NE1/4, SEC. 20, T2N, R65W, 6TH P.M.
WELD COUNTY, COLORADO

PREPARED FOR:



KERR-MCGEE OIL
& GAS ONSHORE LP