

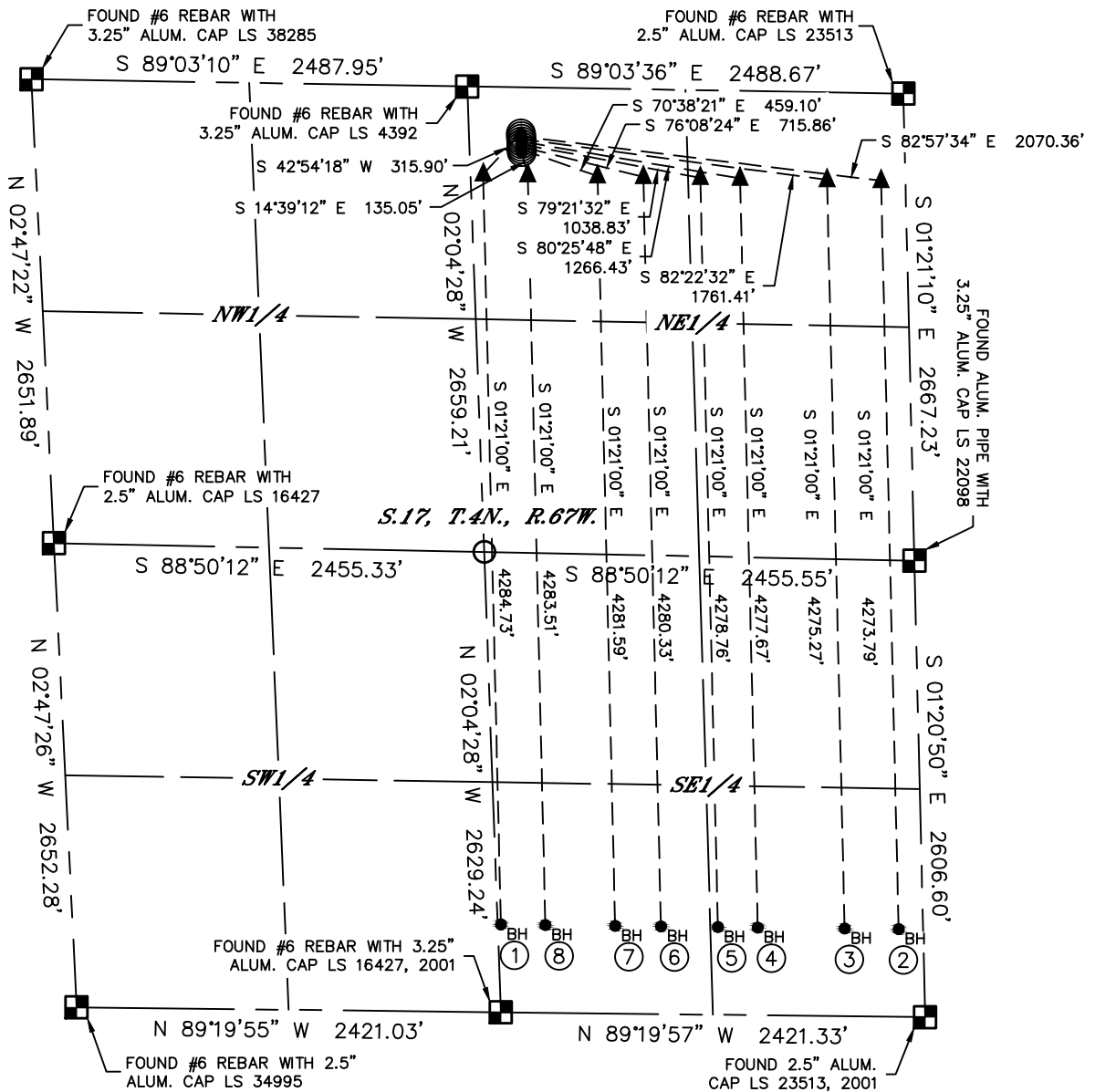


# MULTI-WELL PLAN

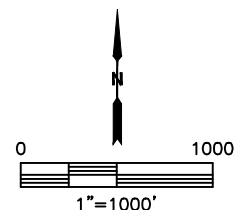
## LAJCO 4N67W17M PAD

SECTION: 17  
 TOWNSHIP: 4N  
 RANGE: 67W  
 6TH. P.M.  
 WELD COUNTY, CO

THIS MAP DOES NOT REPRESENT A BOUNDARY SURVEY



#	WELL NAME	BHL FOOTAGE	BHL LAT °	BHL LONG °	BHL S-T-R
1	LAJCO 17M-423	500 FSL 2408 FEL	40.30714	-104.91433	17-4-67
2	LAJCO 17U-203	500 FSL 139 FEL	40.30703	-104.90619	17-4-67
3	LAJCO 17U-343	500 FSL 447 FEL	40.30704	-104.90730	17-4-67
4	LAJCO 17R-223	500 FSL 943 FEL	40.30707	-104.90908	17-4-67
5	LAJCO 17R-303	500 FSL 1170 FEL	40.30708	-104.90989	17-4-67
6	LAJCO 17R-403	500 FSL 1495 FEL	40.30710	-104.91106	17-4-67
7	LAJCO 17R-243	500 FSL 1756 FEL	40.30711	-104.91199	17-4-67
8	LAJCO 17M-323	500 FSL 2154 FEL	40.30713	-104.91342	17-4-67





Lat40°, Inc. 6250 W. 10th Street, Unit 2, Greeley, CO 970-515-5294

# MULTI-WELL PLAN

LAJCO 4N67W17M PAD

SECTION: 17  
TOWNSHIP: 4N  
RANGE: 67W  
6TH. P.M.  
WELD COUNTY, CO

