

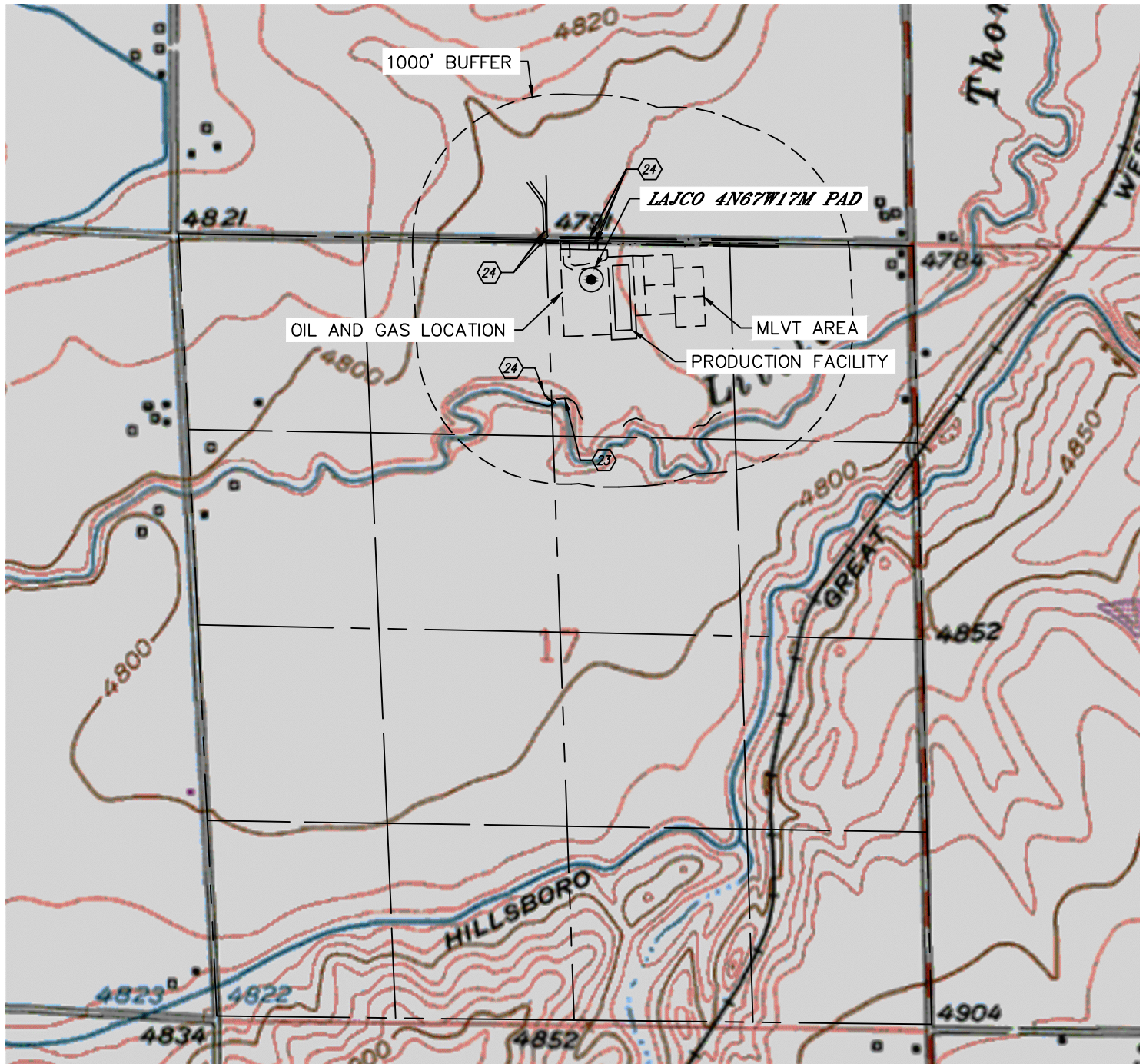


Lat40°, Inc. 6250 W. 10th Street, Unit 2, Greeley, CO 970-515-5294

HYDROLOGY MAP

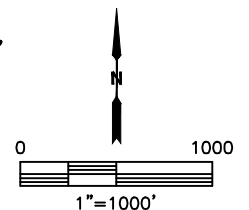
LAJCO 4N67W17M PAD

SECTION: 17
TOWNSHIP: 4N
RANGE: 67W
6TH. P.M.
WELD COUNTY, CO



DISTANCES MEASURED FROM THE EDGE OF THE OIL AND GAS LOCATION.

- ②③ LITTLE THOMPSON RIVER 420' S
- ②④ DITCH 3' & 10' S (INSIDE OIL AND GAS LOCATION), 27' & 35' N, 93', 125' & 133' NW, 404' SW



NEAREST DOWN GRADIENT SURFACE WATER: 10' S (INSIDE OIL AND GAS LOCATION)

DATE: 8/4/2015
PROJECT#: 2014134