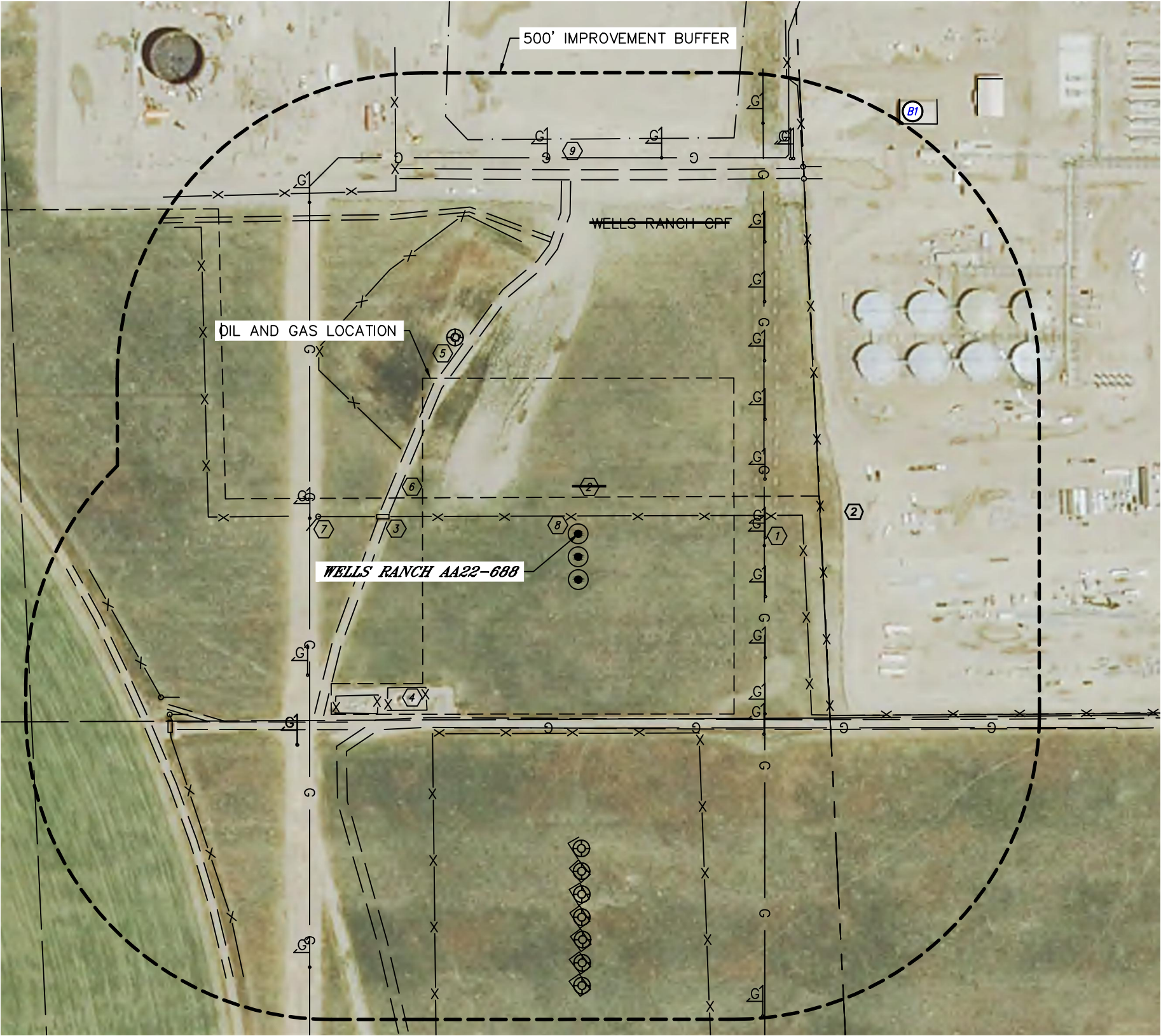




Lat40°, Inc. 6250 W. 10th Street, Unit 2, Greeley, CO 970-515-5294

LOCATION DRAWING
WELLS RANCH AA22-688 PAD

SECTION: 21
TOWNSHIP: 6N
RANGE: 63W
6TH. P.M.
WELD COUNTY, CO



IMPROVEMENTS:
(MEASURED FROM THE PROPOSED WELLS RANCH AA22-688 WELL LOCATION)

- BUT** NO BUILDING UNITS WITHIN 500' IMPROVEMENT BUFFER
- B1** BUILDING **B1** 853' NE
- 1** EX. GAS LINE (PHILLIPS 66) ±305' E, (DCP) ±318' S, (WATTENBERG) ±400' W, ±615' N
- 2** LIMITS OF WELLS RANCH CENTRAL PROCESSING FACILITY (NOBLE) (SPECIFIC PROCESSING EQUIPMENT WITHIN SITE NOT MEASURED) ~~60' N~~, 398' E
- 3** CATTLE GUARD 311' W, 732' SW
- 4** EX. PRODUCTION EQUIPMENT (NOBLE) 354' & 421' SW
- 5** EX. WELL 380' NW, 515', 553', 590', 628', 665', 703' & 740' S
- 6** ROAD 298' NW, 302' S, 480' NW, 580' N, 652' & 765' SW
- 7** GATE 427' W, 689' NE, 734' SW
- 8** FENCE 29' N, 323' & 636' NW, 327' S, 397' E, 734' & 743' SW
- 9** DETENTION POND 647' N

NEAREST CULTURAL ITEMS

MEASURED FROM THE NEAREST	PROPOSED WELL HEAD	EDGE OF PRODUCTION FACILITY
BUILDING	±853' NE	±1185' NE
BUILDING UNIT	±2265' NE	±2565' NE
HIGH OCCUPANCY BUILDING UNIT	5280'+	5280'+
DESIGNATED OUTSIDE ACTIVITY AREA	5280'+	5280'+
PUBLIC ROAD (COUNTY ROAD 68)	±998' N	±1241' N
ABOVE GROUND UTILITY	±985' N	±1227' N
RAILROAD	5280'+	5280'+
PROPERTY LINE	±60' N	±304' N

