



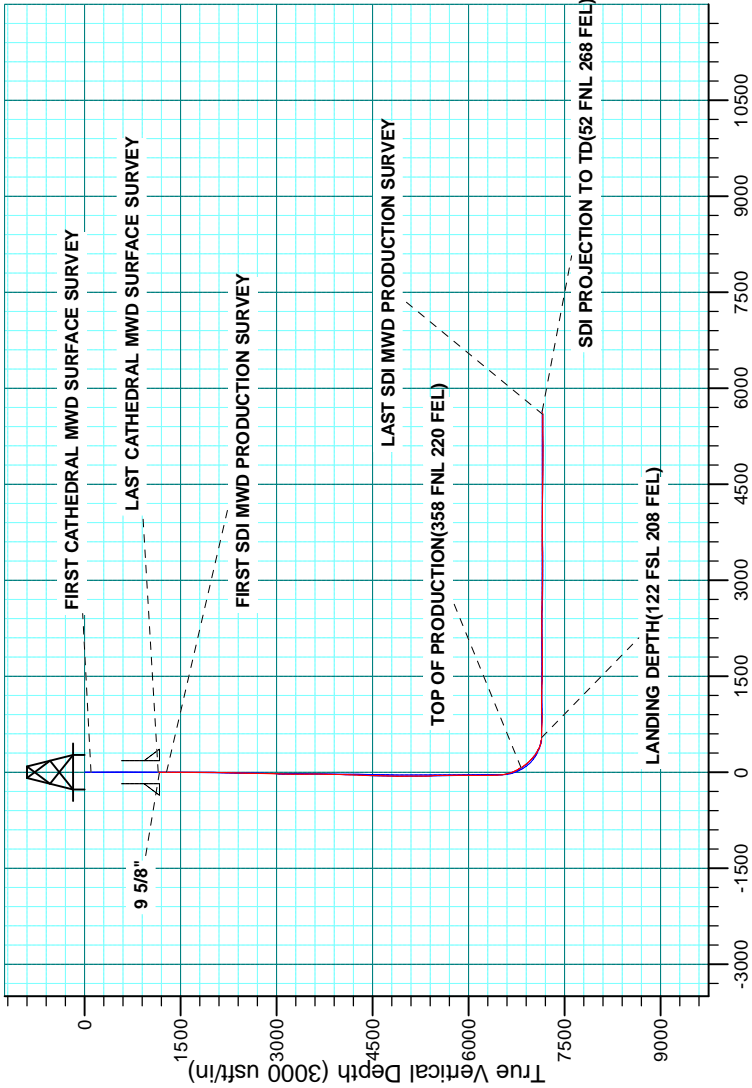
Project: WELD-NAD83-UTMFT13N
Site: 3N-65W-28 Cheese 1-28HZ Pad
Well: Cheese State 26C-21HZ
Wellbore: Plan A
Design: Plan A



WELL DETAILS: Cheese State 26C-21HZ					
GL 4817 & KB 25 @ 4841.99usft (HP 307)					
+N/-S	+E/-W	Northing	Easting	Latitude	Longitude
-1.09	89.91	14600656.82	1734773.93	40.202511	-104.662071

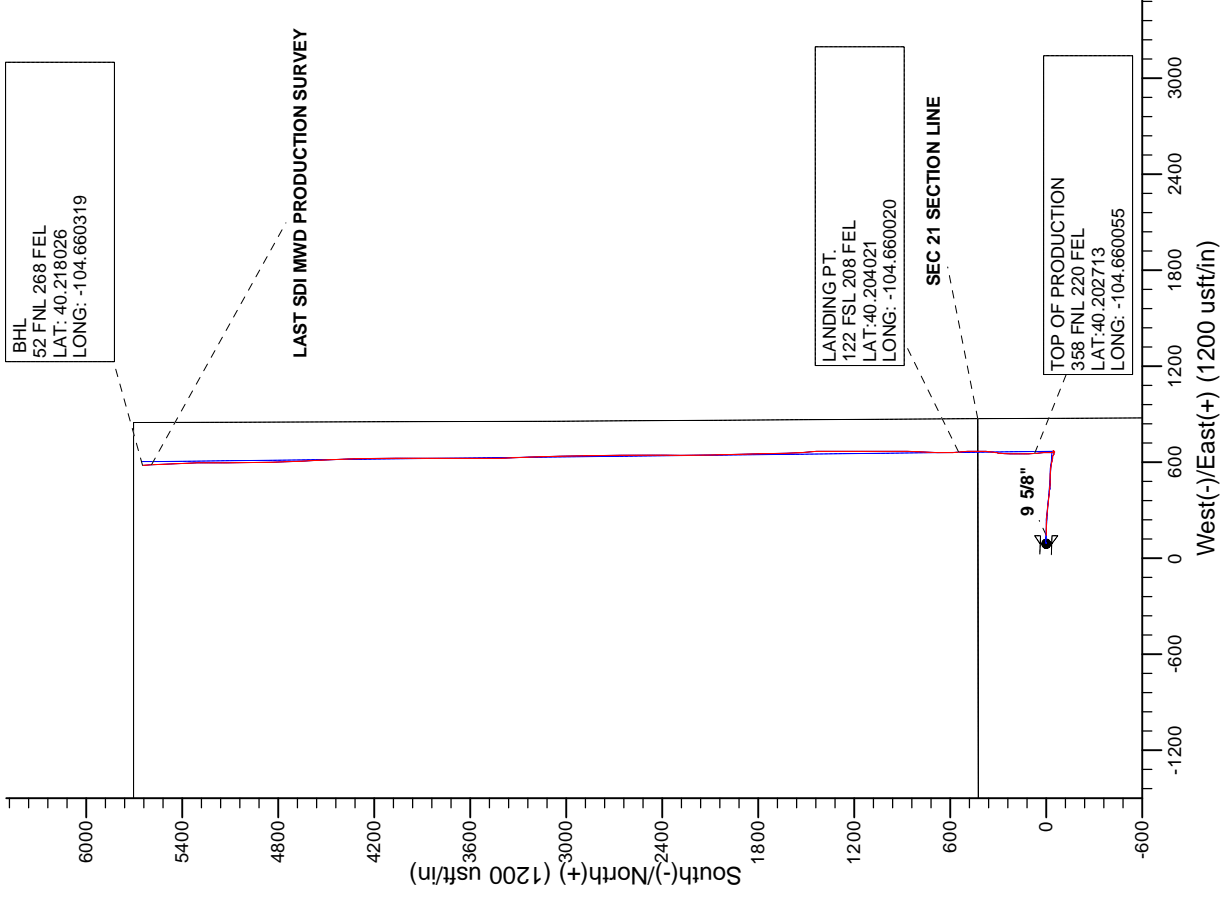
PROJECT DETAILS: WELD-NAD83-UTMFT13N	
Geodetic System: Universal Transverse Mercator (US Survey Feet)	
Datum: North American Datum 1983	
Ellipsoid: GRS 1980	
Zone: Zone 13N (108 W to 102 W)	
Location: SECTION 28 T3N R65W	
System Datum: Mean Sea Level	

CASING DETAILS		
TVD	MD	Name
1166.54169.00		9 5/8" 9.625



Vertical Section at 359.33° (3000 usft/in)

Survey: Survey #2 SDI MWD PRODUCTION (Cheese State 26C-21HZ/Plan A)	
Created By: R.Scott	Date: 11:44, June 08 2015



Company:	US ROCKIES WATTENBERG PLANNING	Local Co-ordinate Reference:	Site 3N-65W-28 Cheese 1-28HZ Pad
Project:	WELD-NAD83-UTMFT13N	TVD Reference:	GL 4817 & KB 25 @ 4841.99usft (HP 307)
Site:	3N-65W-28 Cheese 1-28HZ Pad	MD Reference:	GL 4817 & KB 25 @ 4841.99usft (HP 307)
Well:	Cheese State 26C-21HZ	North Reference:	True
Wellbore:	Plan A	Survey Calculation Method:	Minimum Curvature
Design:	Plan A	Database:	Denver Sales

Project	WELD-NAD83-UTMFT13N		
Map System:	Universal Transverse Mercator (US Survey Feet)	System Datum:	Mean Sea Level
Geo Datum:	North American Datum 1983		
Map Zone:	Zone 13N (108 W to 102 W)		

Site	3N-65W-28 Cheese 1-28HZ Pad, SECTION 28 T3N R65W				
Site Position:		Northing:	14,600,657.57 usft	Latitude:	40.202514
From:	Lat/Long	Easting:	1,734,684.02 usft	Longitude:	-104.662393
Position Uncertainty:	0.00 usft	Slot Radius:	13.200 in	Grid Convergence:	0.22 °

Well	Cheese State 26C-21HZ, 429' FNL 785' FEL					
Well Position	+N/-S	-1.09 usft	Northing:	14,600,656.82 usft	Latitude:	40.202511
	+E/-W	89.91 usft	Easting:	1,734,773.93 usft	Longitude:	-104.662071
Position Uncertainty		0.00 usft	Wellhead Elevation:	0.00 usft	Ground Level:	4,816.99 usft

Wellbore	Plan A				
Magnetics	Model Name	Sample Date	Declination (°)	Dip Angle (°)	Field Strength (nT)
	IGRF2010	10/9/2014	8.35	66.79	52,689

Design	Plan A				
Audit Notes:					
Version:	1.0	Phase:	ACTUAL	Tie On Depth:	0.00
Vertical Section:	Depth From (TVD) (usft)	+N/-S (usft)	+E/-W (usft)	Direction (°)	
	0.00	-1.09	89.91	359.33	

Survey Program	Date	6/8/2015			
From (usft)	To (usft)	Survey (Wellbore)	Tool Name	Description	
20.00	1,155.00	Survey #1 CATHEDRAL MWD SURFACE	APC_ISCWSA REV 2 MWD	Fixed:v2:standard declination	
1,278.00	12,581.00	Survey #2 SDI MWD PRODUCTION (Plan	APC_ISCWSA REV 2 MWD+	Fixed:v2:crustal field declination	

Survey									
Measured Depth (usft)	Inclination (°)	Azimuth (°)	Vertical Depth (usft)	+N/-S (usft)	+E/-W (usft)	Map Northing (usft)	Map Easting (usft)	Latitude	Longitude
0.00	0.00	0.00	0.00	-1.09	89.91	14,600,656.82	1,734,773.93	40.202511	-104.662071
20.00	0.00	0.00	20.00	-1.09	89.91	14,600,656.82	1,734,773.93	40.202511	-104.662071
103.00	1.20	107.70	102.99	-1.36	90.74	14,600,656.56	1,734,774.76	40.202510	-104.662068
FIRST CATHEDRAL MWD SURFACE SURVEY									
165.00	1.00	107.90	164.98	-1.72	91.87	14,600,656.20	1,734,775.90	40.202509	-104.662064
224.00	0.80	96.10	223.97	-1.92	92.77	14,600,656.00	1,734,776.80	40.202509	-104.662061
282.00	0.70	75.20	281.97	-1.87	93.52	14,600,656.05	1,734,777.54	40.202509	-104.662058
343.00	0.20	309.20	342.97	-1.71	93.79	14,600,656.21	1,734,777.82	40.202509	-104.662057
407.00	0.40	325.20	406.97	-1.46	93.58	14,600,656.46	1,734,777.60	40.202510	-104.662058
471.00	0.30	270.50	470.97	-1.27	93.28	14,600,656.65	1,734,777.31	40.202511	-104.662059
535.00	0.50	34.00	534.97	-1.04	93.27	14,600,656.88	1,734,777.30	40.202511	-104.662059

Company:	US ROCKIES WATTENBERG PLANNING	Local Co-ordinate Reference:	Site 3N-65W-28 Cheese 1-28HZ Pad
Project:	WELD-NAD83-UTMFT13N	TVD Reference:	GL 4817 & KB 25 @ 4841.99usft (HP 307)
Site:	3N-65W-28 Cheese 1-28HZ Pad	MD Reference:	GL 4817 & KB 25 @ 4841.99usft (HP 307)
Well:	Cheese State 26C-21HZ	North Reference:	True
Wellbore:	Plan A	Survey Calculation Method:	Minimum Curvature
Design:	Plan A	Database:	Denver Sales

Survey									
Measured Depth (usft)	Inclination (°)	Azimuth (°)	Vertical Depth (usft)	+N/-S (usft)	+E/-W (usft)	Map Northing (usft)	Map Easting (usft)	Latitude	Longitude
599.00	1.60	51.40	598.95	-0.25	94.13	14,600,657.67	1,734,778.15	40.202513	-104.662056
663.00	2.40	69.90	662.91	0.77	96.08	14,600,658.70	1,734,780.10	40.202516	-104.662049
727.00	3.40	78.20	726.83	1.62	99.20	14,600,659.56	1,734,783.21	40.202519	-104.662038
790.00	4.20	84.00	789.69	2.24	103.32	14,600,660.20	1,734,787.33	40.202520	-104.662023
854.00	4.30	90.00	853.52	2.48	108.05	14,600,660.46	1,734,792.06	40.202521	-104.662006
918.00	4.80	95.80	917.32	2.21	113.12	14,600,660.21	1,734,797.13	40.202520	-104.661988
980.00	5.60	96.20	979.06	1.62	118.71	14,600,659.64	1,734,802.72	40.202519	-104.661968
1,044.00	6.70	91.70	1,042.69	1.18	125.54	14,600,659.22	1,734,809.56	40.202517	-104.661944
1,109.00	7.90	91.40	1,107.16	0.95	133.80	14,600,659.03	1,734,817.81	40.202517	-104.661914
1,155.00	8.50	90.50	1,152.69	0.85	140.36	14,600,658.95	1,734,824.37	40.202516	-104.661891
LAST CATHEDRAL MWD SURFACE SURVEY									
1,169.00	8.58	90.61	1,166.54	0.83	142.44	14,600,658.94	1,734,826.45	40.202516	-104.661883
9 5/8"									
1,278.00	9.18	91.40	1,274.23	0.53	159.26	14,600,658.70	1,734,843.27	40.202516	-104.661823
FIRST SDI MWD PRODUCTION SURVEY									
1,373.00	8.91	93.40	1,368.05	-0.09	174.18	14,600,658.14	1,734,858.20	40.202514	-104.661769
1,467.00	8.08	93.03	1,461.02	-0.87	188.04	14,600,657.41	1,734,872.06	40.202512	-104.661720
1,562.00	7.68	93.10	1,555.12	-1.57	201.05	14,600,656.76	1,734,885.07	40.202510	-104.661673
1,656.00	9.28	91.21	1,648.09	-2.07	214.90	14,600,656.31	1,734,898.92	40.202508	-104.661624
1,751.00	8.21	87.37	1,741.99	-1.92	229.33	14,600,656.52	1,734,913.36	40.202509	-104.661572
1,845.00	8.25	96.21	1,835.02	-2.34	242.74	14,600,656.15	1,734,926.77	40.202508	-104.661524
1,940.00	10.26	96.39	1,928.78	-4.02	257.93	14,600,654.53	1,734,941.96	40.202503	-104.661470
2,034.00	10.09	95.27	2,021.30	-5.71	274.45	14,600,652.90	1,734,958.48	40.202498	-104.661410
2,128.00	9.79	94.28	2,113.89	-7.06	290.61	14,600,651.61	1,734,974.66	40.202495	-104.661352
2,222.00	9.01	93.82	2,206.63	-8.15	305.93	14,600,650.58	1,734,989.98	40.202492	-104.661298
2,317.00	8.63	92.76	2,300.50	-8.99	320.47	14,600,649.80	1,735,004.52	40.202489	-104.661246
2,411.00	7.54	94.38	2,393.57	-9.80	333.66	14,600,649.04	1,735,017.72	40.202487	-104.661198
2,506.00	8.16	100.12	2,487.68	-11.46	346.52	14,600,647.43	1,735,030.58	40.202483	-104.661152
2,601.00	9.17	97.38	2,581.59	-13.62	360.66	14,600,645.32	1,735,044.73	40.202477	-104.661102
2,695.00	8.44	97.94	2,674.49	-15.53	374.92	14,600,643.46	1,735,059.00	40.202471	-104.661051
2,790.00	9.10	98.24	2,768.38	-17.57	389.26	14,600,641.48	1,735,073.34	40.202466	-104.660999
2,884.00	8.75	97.89	2,861.24	-19.62	403.70	14,600,639.49	1,735,087.79	40.202460	-104.660947
2,978.00	8.04	99.47	2,954.23	-21.68	417.27	14,600,637.47	1,735,101.36	40.202455	-104.660899
3,073.00	8.88	93.61	3,048.20	-23.24	431.14	14,600,635.97	1,735,115.24	40.202450	-104.660849
3,167.00	7.36	93.21	3,141.25	-24.03	444.39	14,600,635.23	1,735,128.50	40.202448	-104.660802
3,262.00	8.17	92.41	3,235.38	-24.65	457.21	14,600,634.65	1,735,141.32	40.202446	-104.660756
3,356.00	8.37	93.20	3,328.40	-25.32	470.71	14,600,634.04	1,735,154.83	40.202445	-104.660707
3,451.00	8.44	89.42	3,422.38	-25.63	484.59	14,600,633.78	1,735,168.70	40.202444	-104.660658
3,545.00	9.47	81.52	3,515.24	-24.42	499.14	14,600,635.04	1,735,183.25	40.202447	-104.660606
3,640.00	8.50	92.11	3,609.08	-23.53	513.88	14,600,635.99	1,735,197.99	40.202449	-104.660553
3,734.00	9.98	92.28	3,701.86	-24.11	528.97	14,600,635.47	1,735,213.07	40.202448	-104.660499
3,829.00	10.56	97.87	3,795.34	-25.63	545.82	14,600,634.02	1,735,229.93	40.202444	-104.660439
3,923.00	9.75	93.75	3,887.86	-27.33	562.29	14,600,632.38	1,735,246.41	40.202439	-104.660380
4,017.00	10.33	103.44	3,980.43	-29.81	578.43	14,600,629.96	1,735,262.56	40.202432	-104.660322
4,112.00	9.63	101.38	4,073.99	-33.35	594.51	14,600,626.47	1,735,278.65	40.202422	-104.660264
4,206.00	8.62	100.13	4,166.80	-36.15	609.15	14,600,623.74	1,735,293.30	40.202415	-104.660212
4,301.00	8.26	101.87	4,260.77	-38.80	622.84	14,600,621.14	1,735,307.00	40.202408	-104.660163
4,395.00	6.28	107.90	4,354.01	-41.77	634.34	14,600,618.21	1,735,318.51	40.202399	-104.660121
4,490.00	6.45	111.08	4,448.43	-45.29	644.26	14,600,614.73	1,735,328.45	40.202390	-104.660086
4,584.00	4.53	105.39	4,541.99	-48.17	652.77	14,600,611.88	1,735,336.96	40.202382	-104.660055
4,678.00	3.06	109.36	4,635.79	-49.99	658.71	14,600,610.09	1,735,342.92	40.202377	-104.660034
4,773.00	1.21	112.67	4,730.72	-51.22	662.03	14,600,608.87	1,735,346.24	40.202373	-104.660022
4,867.00	0.95	123.84	4,824.70	-52.03	663.59	14,600,608.06	1,735,347.81	40.202371	-104.660017
4,962.00	1.30	137.38	4,919.68	-53.26	664.98	14,600,606.83	1,735,349.19	40.202368	-104.660012
5,056.00	0.61	77.68	5,013.67	-53.94	666.19	14,600,606.16	1,735,350.41	40.202366	-104.660007

Company:	US ROCKIES WATTENBERG PLANNING	Local Co-ordinate Reference:	Site 3N-65W-28 Cheese 1-28HZ Pad
Project:	WELD-NAD83-UTMFT13N	TVD Reference:	GL 4817 & KB 25 @ 4841.99usft (HP 307)
Site:	3N-65W-28 Cheese 1-28HZ Pad	MD Reference:	GL 4817 & KB 25 @ 4841.99usft (HP 307)
Well:	Cheese State 26C-21HZ	North Reference:	True
Wellbore:	Plan A	Survey Calculation Method:	Minimum Curvature
Design:	Plan A	Database:	Denver Sales

Survey									
Measured Depth (usft)	Inclination (°)	Azimuth (°)	Vertical Depth (usft)	+N/-S (usft)	+E/-W (usft)	Map Northing (usft)	Map Easting (usft)	Latitude	Longitude
5,151.00	0.72	74.92	5,108.66	-53.68	667.26	14,600,606.43	1,735,351.48	40.202367	-104.660004
5,245.00	0.59	37.96	5,202.66	-53.14	668.13	14,600,606.97	1,735,352.34	40.202368	-104.660000
5,340.00	0.67	345.26	5,297.65	-52.22	668.29	14,600,607.89	1,735,352.50	40.202371	-104.660000
5,434.00	0.85	345.40	5,391.64	-51.01	667.97	14,600,609.09	1,735,352.18	40.202374	-104.660001
5,529.00	0.62	357.41	5,486.64	-49.82	667.77	14,600,610.29	1,735,351.97	40.202377	-104.660002
5,624.00	0.89	17.25	5,581.63	-48.60	667.97	14,600,611.51	1,735,352.16	40.202381	-104.660001
5,718.00	0.96	26.92	5,675.62	-47.20	668.54	14,600,612.91	1,735,352.73	40.202384	-104.659999
5,813.00	0.60	34.02	5,770.61	-46.08	669.18	14,600,614.03	1,735,353.37	40.202388	-104.659997
5,907.00	0.36	43.33	5,864.60	-45.46	669.66	14,600,614.66	1,735,353.84	40.202389	-104.659995
6,002.00	0.51	210.34	5,959.60	-45.60	669.65	14,600,614.51	1,735,353.83	40.202389	-104.659995
6,097.00	1.02	311.46	6,054.60	-45.41	668.80	14,600,614.70	1,735,352.99	40.202389	-104.659998
6,191.00	2.01	312.59	6,148.56	-43.74	666.96	14,600,616.36	1,735,351.14	40.202394	-104.660005
6,286.00	1.92	269.12	6,243.51	-42.64	664.14	14,600,617.46	1,735,348.32	40.202397	-104.660015
6,380.00	0.27	331.33	6,337.49	-42.47	662.46	14,600,617.62	1,735,346.64	40.202397	-104.660021
6,475.00	1.71	338.49	6,432.48	-40.95	661.83	14,600,619.13	1,735,346.00	40.202402	-104.660023
6,569.00	8.75	357.82	6,526.03	-32.49	661.05	14,600,627.59	1,735,345.18	40.202425	-104.660026
6,663.00	14.19	359.06	6,618.12	-13.81	660.58	14,600,646.27	1,735,344.65	40.202476	-104.660027
6,758.00	22.72	353.68	6,708.16	16.12	658.37	14,600,676.19	1,735,342.32	40.202558	-104.660035
6,852.00	29.86	354.58	6,792.38	57.51	654.16	14,600,717.57	1,735,337.95	40.202672	-104.660051
6,881.00	31.90	355.52	6,817.27	72.34	652.87	14,600,732.39	1,735,336.61	40.202713	-104.660055
TOP OF PRODUCTION(358 FNL 220 FEL)									
6,947.00	36.56	357.30	6,871.82	109.38	650.58	14,600,769.42	1,735,334.18	40.202814	-104.660063
7,042.00	44.50	0.89	6,943.98	171.04	649.77	14,600,831.08	1,735,333.13	40.202984	-104.660066
7,136.00	49.69	2.67	7,007.95	239.83	651.95	14,600,899.88	1,735,335.05	40.203173	-104.660058
7,230.00	58.16	8.73	7,063.29	315.28	659.70	14,600,975.36	1,735,342.51	40.203380	-104.660031
7,325.00	67.54	0.92	7,106.64	399.35	666.55	14,601,059.45	1,735,349.05	40.203611	-104.660006
7,419.00	83.47	357.42	7,130.10	490.04	665.14	14,601,150.13	1,735,347.29	40.203860	-104.660011
7,478.00	86.34	357.93	7,135.34	548.75	662.75	14,601,208.83	1,735,344.68	40.204021	-104.660020
LANDING DEPTH(122 FSL 208 FEL)									
7,514.00	88.09	358.24	7,137.09	584.68	661.55	14,601,244.76	1,735,343.34	40.204120	-104.660024
7,608.00	86.94	0.91	7,141.17	678.58	660.86	14,601,338.66	1,735,342.29	40.204378	-104.660026
7,703.00	89.06	1.69	7,144.48	773.49	663.01	14,601,433.58	1,735,344.08	40.204638	-104.660019
7,798.00	90.17	1.50	7,145.12	868.45	665.65	14,601,528.55	1,735,346.37	40.204899	-104.660009
7,892.00	91.31	1.56	7,143.91	962.41	668.16	14,601,622.51	1,735,348.52	40.205157	-104.660000
7,987.00	90.30	0.02	7,142.57	1,057.39	669.47	14,601,717.49	1,735,349.47	40.205418	-104.659996
8,081.00	91.04	359.29	7,141.47	1,151.38	668.91	14,601,811.48	1,735,348.54	40.205676	-104.659998
8,175.00	90.34	0.23	7,140.34	1,245.37	668.51	14,601,905.47	1,735,347.79	40.205934	-104.659999
8,270.00	87.28	359.21	7,142.31	1,340.34	668.05	14,602,000.43	1,735,346.97	40.206195	-104.660001
8,364.00	86.64	358.04	7,147.30	1,434.17	665.80	14,602,094.26	1,735,344.36	40.206452	-104.660009
8,459.00	89.36	356.58	7,150.62	1,529.00	661.34	14,602,189.07	1,735,339.54	40.206713	-104.660025
8,553.00	90.94	357.33	7,150.37	1,622.86	656.35	14,602,282.92	1,735,334.19	40.206971	-104.660043
8,648.00	90.77	358.41	7,148.95	1,717.79	652.82	14,602,377.82	1,735,330.30	40.207231	-104.660055
8,742.00	90.03	359.14	7,148.30	1,811.76	650.81	14,602,471.79	1,735,327.93	40.207489	-104.660062
8,837.00	90.60	358.19	7,147.77	1,906.73	648.60	14,602,566.75	1,735,325.36	40.207750	-104.660070
8,931.00	90.10	358.72	7,147.20	2,000.70	646.06	14,602,660.71	1,735,322.47	40.208008	-104.660079
9,026.00	91.61	358.63	7,145.78	2,095.66	643.86	14,602,755.66	1,735,319.91	40.208269	-104.660087
9,121.00	90.67	358.97	7,143.89	2,190.62	641.88	14,602,850.61	1,735,317.56	40.208530	-104.660094
9,215.00	89.43	359.97	7,143.81	2,284.61	641.01	14,602,944.60	1,735,316.33	40.208788	-104.660097
9,310.00	91.08	0.49	7,143.39	2,379.60	641.39	14,603,039.59	1,735,316.35	40.209049	-104.660096
9,404.00	89.53	1.59	7,142.89	2,473.58	643.09	14,603,133.58	1,735,317.70	40.209307	-104.660090
9,499.00	86.10	359.06	7,146.51	2,568.49	643.63	14,603,228.49	1,735,317.88	40.209567	-104.660088
9,593.00	88.56	358.84	7,150.89	2,662.37	641.91	14,603,322.35	1,735,315.80	40.209825	-104.660094
9,688.00	89.50	359.11	7,152.49	2,757.34	640.21	14,603,417.32	1,735,313.74	40.210086	-104.660100
9,782.00	90.64	359.85	7,152.38	2,851.33	639.36	14,603,511.31	1,735,312.53	40.210344	-104.660103
9,877.00	89.46	359.37	7,152.30	2,946.32	638.71	14,603,606.30	1,735,311.52	40.210605	-104.660106

Company:	US ROCKIES WATTENBERG PLANNING	Local Co-ordinate Reference:	Site 3N-65W-28 Cheese 1-28HZ Pad
Project:	WELD-NAD83-UTMFT13N	TVD Reference:	GL 4817 & KB 25 @ 4841.99usft (HP 307)
Site:	3N-65W-28 Cheese 1-28HZ Pad	MD Reference:	GL 4817 & KB 25 @ 4841.99usft (HP 307)
Well:	Cheese State 26C-21HZ	North Reference:	True
Wellbore:	Plan A	Survey Calculation Method:	Minimum Curvature
Design:	Plan A	Database:	Denver Sales

Survey									
Measured Depth (usft)	Inclination (°)	Azimuth (°)	Vertical Depth (usft)	+N/-S (usft)	+E/-W (usft)	Map Northing (usft)	Map Easting (usft)	Latitude	Longitude
9,971.00	89.66	358.54	7,153.02	3,040.31	637.00	14,603,700.27	1,735,309.45	40.210863	-104.660112
10,066.00	90.00	357.22	7,153.30	3,135.24	633.49	14,603,795.19	1,735,305.58	40.211124	-104.660124
10,160.00	88.42	359.16	7,154.60	3,229.17	630.52	14,603,889.12	1,735,302.25	40.211382	-104.660135
10,255.00	90.34	357.48	7,155.62	3,324.12	627.73	14,603,984.05	1,735,299.10	40.211642	-104.660145
10,349.00	91.91	358.52	7,153.78	3,418.04	624.45	14,604,077.96	1,735,295.47	40.211900	-104.660157
10,444.00	91.75	359.96	7,150.75	3,512.98	623.19	14,604,172.89	1,735,293.85	40.212161	-104.660161
10,538.00	90.50	0.16	7,148.90	3,606.96	623.29	14,604,266.87	1,735,293.59	40.212419	-104.660161
10,633.00	89.40	0.14	7,148.98	3,701.96	623.54	14,604,361.87	1,735,293.47	40.212680	-104.660160
10,727.00	90.03	0.02	7,149.45	3,795.96	623.67	14,604,455.87	1,735,293.25	40.212938	-104.660159
10,821.00	88.73	359.90	7,150.47	3,889.95	623.61	14,604,549.86	1,735,292.82	40.213196	-104.660160
10,916.00	89.40	0.31	7,152.02	3,984.94	623.78	14,604,644.85	1,735,292.64	40.213457	-104.660159
11,010.00	89.97	359.49	7,152.53	4,078.93	623.62	14,604,738.84	1,735,292.12	40.213715	-104.660160
11,105.00	90.37	359.42	7,152.25	4,173.93	622.71	14,604,833.83	1,735,290.85	40.213976	-104.660163
11,199.00	91.31	359.23	7,150.87	4,267.91	621.60	14,604,927.81	1,735,289.39	40.214234	-104.660167
11,294.00	89.80	357.50	7,149.95	4,362.86	618.89	14,605,022.75	1,735,286.31	40.214495	-104.660176
11,388.00	89.73	357.84	7,150.34	4,456.78	615.07	14,605,116.66	1,735,282.14	40.214753	-104.660190
11,483.00	89.66	358.53	7,150.85	4,551.73	612.06	14,605,211.60	1,735,278.77	40.215013	-104.660201
11,577.00	87.08	357.15	7,153.52	4,645.62	608.52	14,605,305.47	1,735,274.87	40.215271	-104.660214
11,672.00	89.43	357.92	7,156.41	4,740.48	604.44	14,605,400.31	1,735,270.42	40.215532	-104.660228
11,766.00	88.29	357.43	7,158.28	4,834.38	600.63	14,605,494.20	1,735,266.25	40.215790	-104.660242
11,861.00	88.56	359.21	7,160.89	4,929.30	597.84	14,605,589.11	1,735,263.11	40.216050	-104.660252
11,955.00	90.27	0.25	7,161.85	5,023.29	597.40	14,605,683.09	1,735,262.31	40.216308	-104.660253
12,050.00	91.88	359.97	7,160.07	5,118.27	597.58	14,605,778.07	1,735,262.13	40.216569	-104.660253
12,144.00	91.17	359.87	7,157.57	5,212.24	597.45	14,605,872.04	1,735,261.64	40.216827	-104.660253
12,239.00	90.13	358.16	7,156.49	5,307.21	595.82	14,605,967.01	1,735,259.65	40.217088	-104.660259
12,333.00	90.87	357.02	7,155.67	5,401.12	591.87	14,606,060.90	1,735,255.34	40.217346	-104.660273
12,428.00	90.07	357.27	7,154.89	5,496.00	587.14	14,606,155.76	1,735,250.25	40.217606	-104.660290
12,522.00	91.54	356.90	7,153.57	5,589.87	582.36	14,606,249.61	1,735,245.11	40.217864	-104.660307
LAST SDI MWD PRODUCTION SURVEY									
12,581.00	91.54	356.90	7,151.99	5,648.76	579.17	14,606,308.49	1,735,241.70	40.218026	-104.660319
SDI PROJECTION TO TD(52 FNL 268 FEL)									

Casing Points					
Measured Depth (usft)	Vertical Depth (usft)	Name	Casing Diameter (in)	Hole Diameter (in)	
1,169.00	1,166.54	9 5/8"	9.625	13.500	

Design Annotations					
Measured Depth (usft)	Vertical Depth (usft)	Local Coordinates		Comment	
		+N/-S (usft)	+E/-W (usft)		
103.00	102.99	-1.36	90.74	FIRST CATHEDRAL MWD SURFACE SURVEY	
1,155.00	1,152.69	0.85	140.36	LAST CATHEDRAL MWD SURFACE SURVEY	
1,278.00	1,274.23	0.53	159.26	FIRST SDI MWD PRODUCTION SURVEY	
6,881.00	6,817.27	72.34	652.87	TOP OF PRODUCTION(358 FNL 220 FEL)	
7,478.00	7,135.34	548.75	662.75	LANDING DEPTH(122 FSL 208 FEL)	
12,522.00	7,153.57	5,589.87	582.36	LAST SDI MWD PRODUCTION SURVEY	
12,581.00	7,151.99	5,648.76	579.17	SDI PROJECTION TO TD(52 FNL 268 FEL)	

Company:	US ROCKIES WATTENBERG PLANNING	Local Co-ordinate Reference:	Site 3N-65W-28 Cheese 1-28HZ Pad
Project:	WELD-NAD83-UTMFT13N	TVD Reference:	GL 4817 & KB 25 @ 4841.99usft (HP 307)
Site:	3N-65W-28 Cheese 1-28HZ Pad	MD Reference:	GL 4817 & KB 25 @ 4841.99usft (HP 307)
Well:	Cheese State 26C-21HZ	North Reference:	True
Wellbore:	Plan A	Survey Calculation Method:	Minimum Curvature
Design:	Plan A	Database:	Denver Sales

Checked By:	_____	Approved By:	_____	Date:	_____
-------------	-------	--------------	-------	-------	-------