

EXTRACTION OIL & GAS

WELD COUNTY, COLORADO (NAD 83)

NW SW SEC. 5 T2N R68W 6th P.M.

FAIRVIEW 3

ORIGINAL WELLBORE

10 August, 2015

Plan: PROPOSAL #3

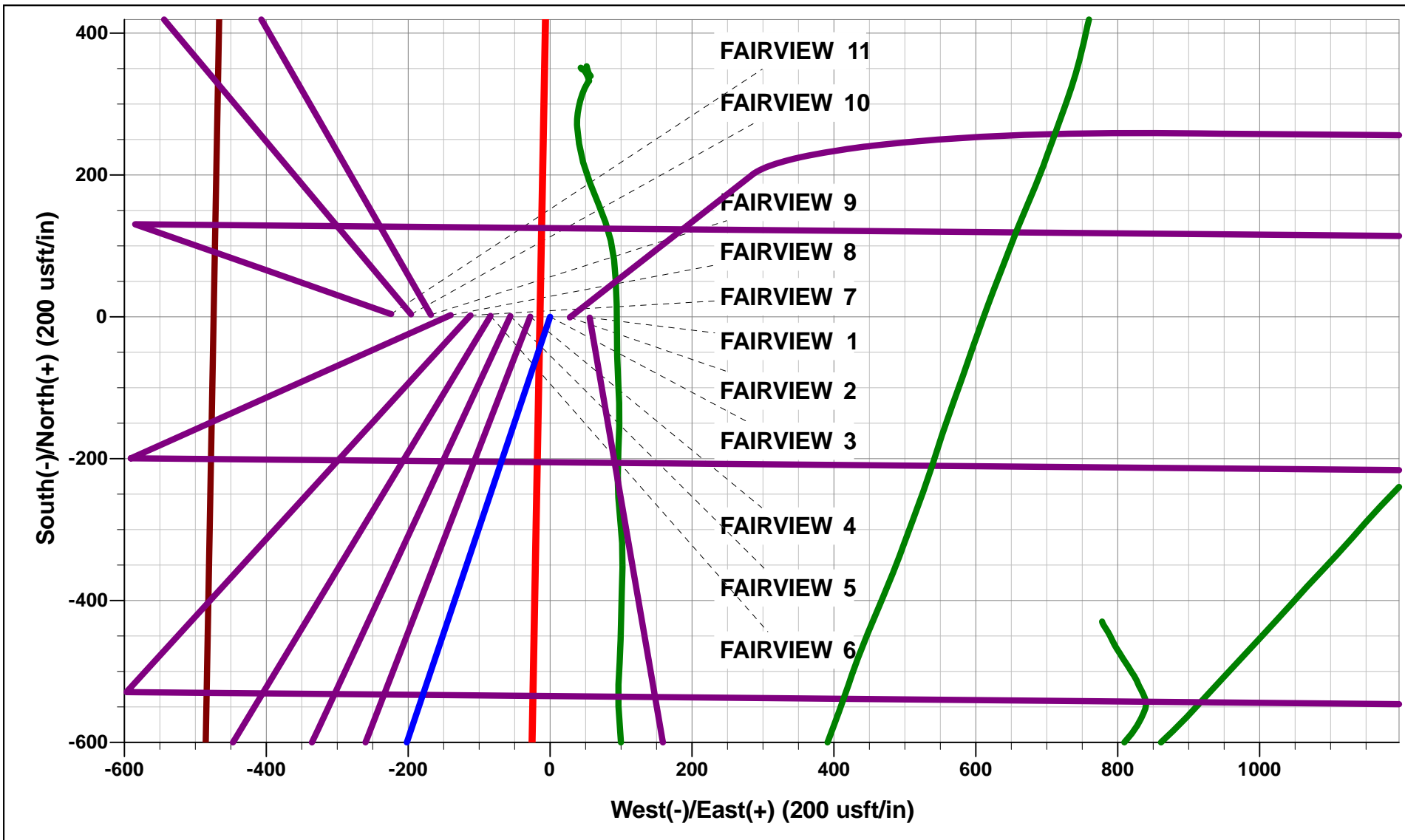




Project: WELD COUNTY, COLORADO (NAD 83)
Site: NW SW SEC. 5 T2N R68W 6th P.M.
Well: FAIRVIEW 3
Wellbore: ORIGINAL WELLBORE
Design: PROPOSAL #3

ANNOTATIONS									
TVD	MD	Inc	Azi	+N/-S	+E/-W	VSect	Dep	Annotation	
1300.0	1300.0	0.00	0.00	0.0	0.0	0.0	0.0	START NUDGE (2°/100ft BUR)	
1500.0	1500.2	4.00	198.58	-6.6	-2.2	-0.4	7.0	9 5/8" SURFACE CASING	
1564.8	1565.2	4.00	198.58	-10.9	-3.7	-0.7	11.5	END OF TANGENT	
2686.1	2738.2	27.46	198.58	-310.3	-104.3	-18.9	327.4	EOB TO 27.46° INC	
5187.8	5557.7	27.46	198.58	-1542.9	-518.7	-94.0	1627.7	END OF TANGENT	
6509.0	6930.9	0.00	0.00	-1848.9	-621.6	-112.7	1950.6	EOD TO VERTICAL	
6539.0	6960.9	0.00	0.00	-1848.9	-621.6	-112.7	1950.6	KOP (10°/100ft BUR)	
7112.0	7861.0	90.00	90.54	-1854.3	-48.6	441.5	2523.6	LANDING PNT - FAIRVIEW 3 (P3)	
7112.0	14945.6	90.00	90.54	-1921.0	7035.7	7293.3	9608.3	BHL - FAIRVIEW 3 (P3)	

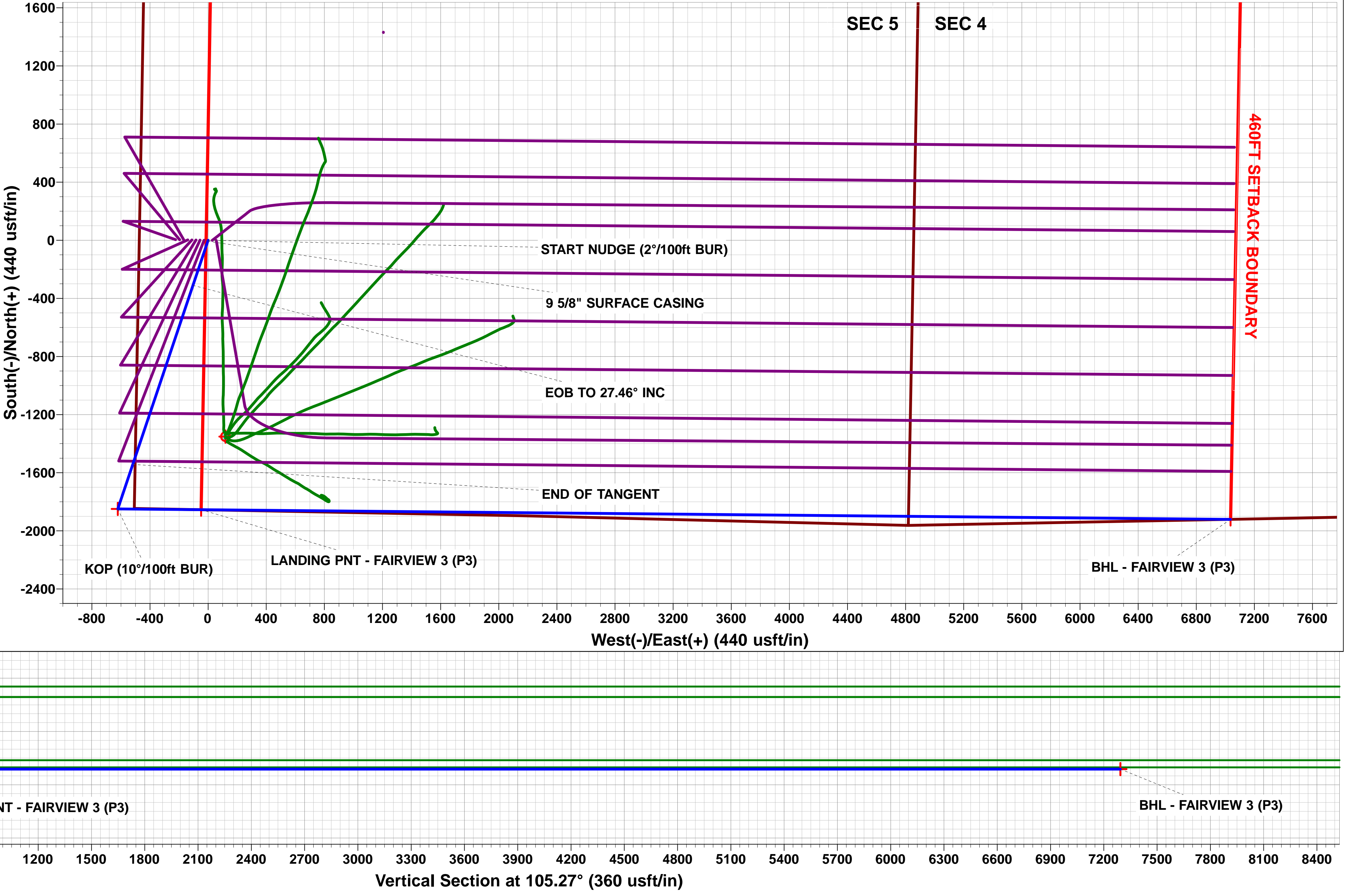
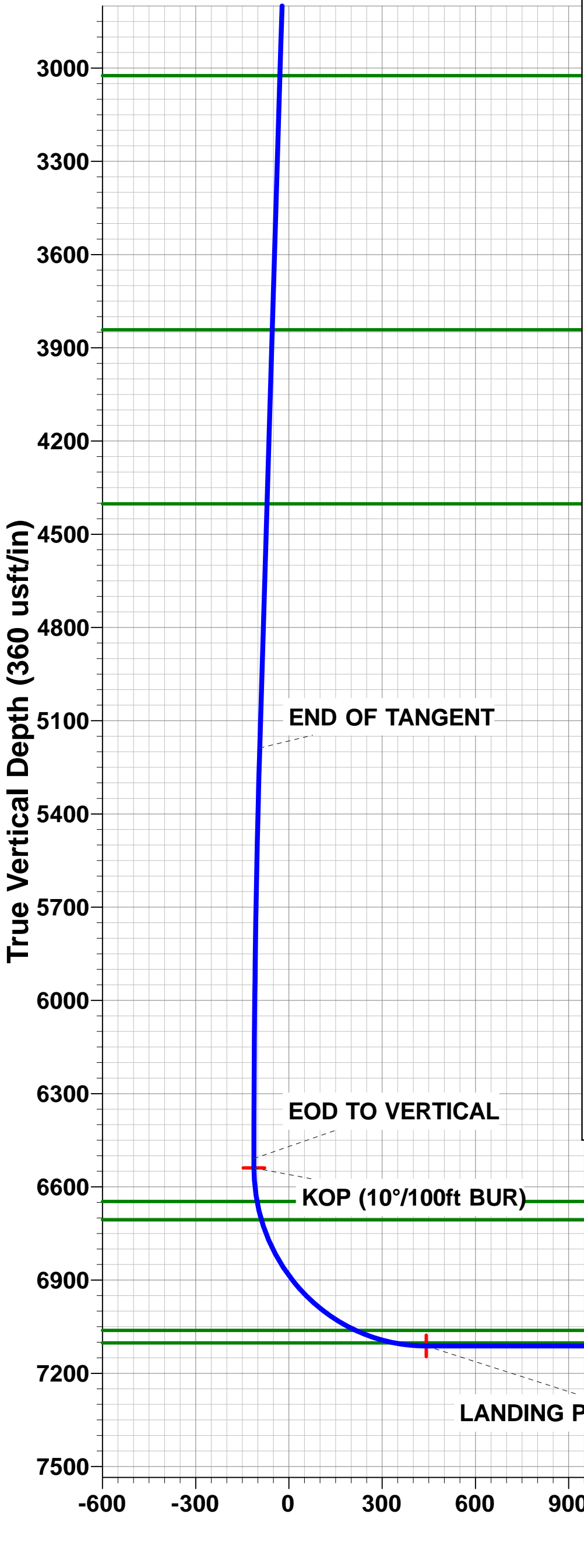
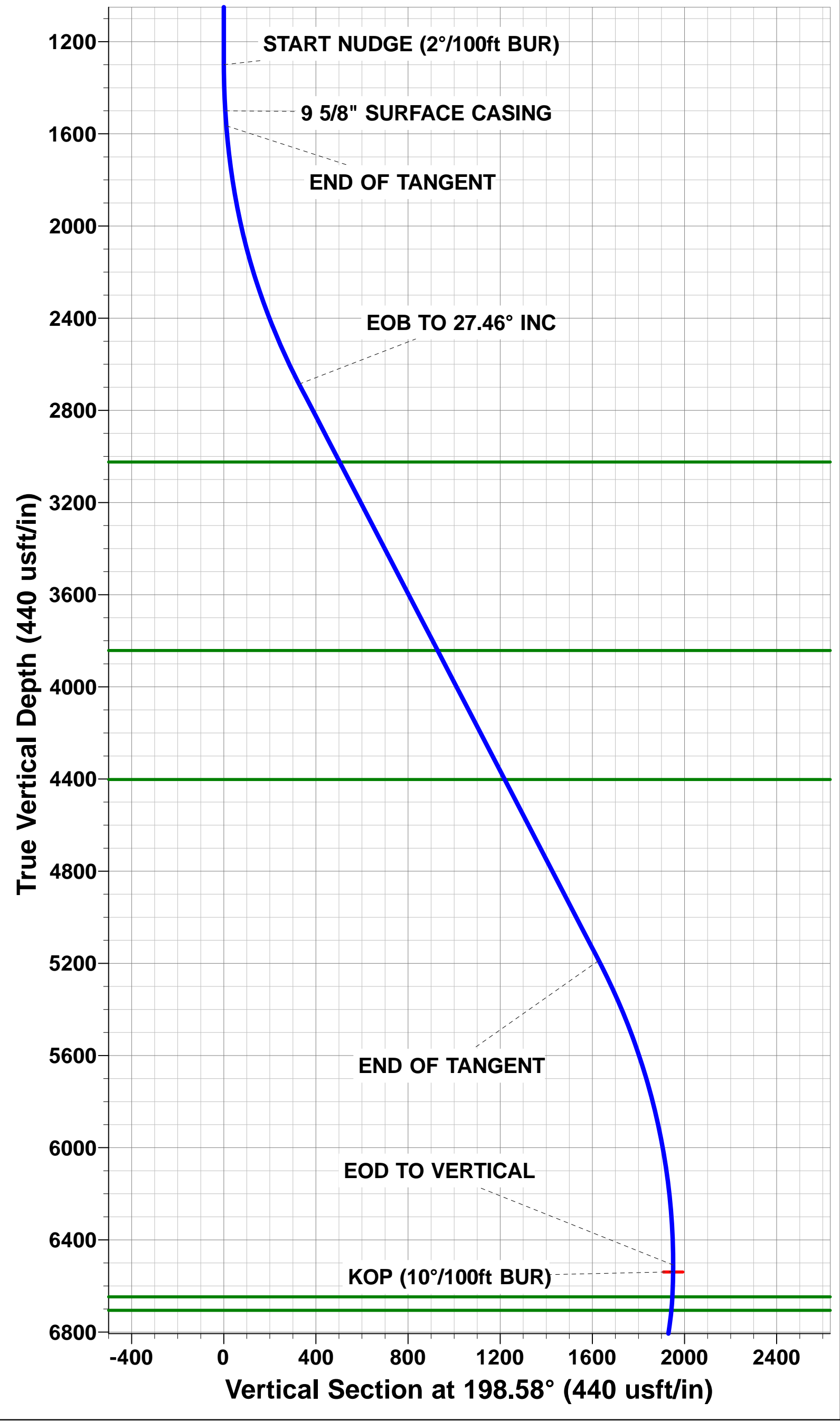
WELLBORE TARGET DETAILS (LAT/LONG)					
Name	TVD	+N/-S	+E/-W	Latitude	Longitude
KOP - FAIRVIEW 3 (P3)	6539.0	-1848.9	-621.6	40.160684	-105.037091
LANDING PNT - FAIRVIEW 3 (P3)	7112.0	-1854.3	-48.6	40.160669	-105.035041
BHL - FAIRVIEW 3 (P3)	7112.0	-1921.0	7035.7	40.160483	-105.009695



FORMATION TOP DETAILS		
TVDPath	MDPath	Formation
3024.0	3119.1	PARKMAN
3842.0	4041.0	SUSSEX
4402.0	4672.1	SHANNON
6647.0	7069.5	SHARON SPRINGS
6706.0	7130.3	NIOBRARA
7062.0	7619.8	FORT HAYS
7102.0	7753.7	CODELL

Azimuths to True North
Magnetic North: 8.53°

Magnetic Field
Strength: 52451.3snT
Dip Angle: 66.67°
Date: 10/08/2015
Model: IGRF2015



Planning Report



Database:	EDM 5000.1 Single User Db	Local Co-ordinate Reference:	Well FAIRVIEW 3
Company:	EXTRACTION OIL & GAS	TVD Reference:	KB-EST @ 4959.0usft
Project:	WELD COUNTY, COLORADO (NAD 83)	MD Reference:	KB-EST @ 4959.0usft
Site:	NW SW SEC. 5 T2N R68W 6th P.M.	North Reference:	True
Well:	FAIRVIEW 3	Survey Calculation Method:	Minimum Curvature
Wellbore:	ORIGINAL WELLBORE		
Design:	PROPOSAL #3		

Project	WELD COUNTY, COLORADO (NAD 83)		
Map System:	US State Plane 1983	System Datum:	Mean Sea Level
Geo Datum:	North American Datum 1983		
Map Zone:	Colorado Northern Zone		Using geodetic scale factor

Site	NW SW SEC. 5 T2N R68W 6th P.M.		
Site Position:		Northing:	1,303,569.20 usft
From:	Lat/Long	Easting:	3,130,047.26 usft
Position Uncertainty:	0.0 usft	Slot Radius:	1.10000ft
		Latitude:	40.165756
		Longitude:	-105.034667
		Grid Convergence:	0.30 °

Well	FAIRVIEW 3		
Well Position	+N/-S	1.1 usft	Northing:
	+E/-W	-55.9 usft	Easting:
Position Uncertainty	0.0 usft		Wellhead Elevation:
			Latitude:
			Longitude:
			Ground Level:

Wellbore	ORIGINAL WELLBORE				
Magnetics	Model Name	Sample Date	Declination (°)	Dip Angle (°)	Field Strength (nT)
	IGRF2015	10/08/2015	8.53	66.67	52,451

Design	PROPOSAL #3			
Audit Notes:				
Version:	Phase:	PROTOTYPE	Tie On Depth:	0.0
Vertical Section:	Depth From (TVD) (usft)	+N/-S (usft)	+E/-W (usft)	Direction (°)
	7,112.0	0.0	0.0	105.27

Plan Sections											
MD (usft)	Inc (°)	Azi (°)	Vertical Depth	SS (usft)	+N/-S (usft)	+E/-W (usft)	Dogleg Rate (°/100usf)	Build Rate (°/100usf)	Turn Rate (°/100usf)	TFO (°)	Target
0.0	0.00	0.00	0.0	-4,959.0	0.0	0.0	0.00	0.00	0.00	0.00	
1,300.0	0.00	0.00	1,300.0	-3,659.0	0.0	0.0	0.00	0.00	0.00	0.00	
1,500.2	4.00	198.58	1,500.0	-3,459.0	-6.6	-2.2	2.00	2.00	0.00	198.58	
1,565.2	4.00	198.58	1,564.8	-3,394.2	-10.9	-3.7	0.00	0.00	0.00	0.00	
2,738.2	27.46	198.58	2,686.1	-2,272.9	-310.3	-104.3	2.00	2.00	0.00	0.00	
5,557.7	27.46	198.58	5,187.8	228.8	-1,542.9	-518.7	0.00	0.00	0.00	0.00	
6,930.9	0.00	0.00	6,509.0	1,550.0	-1,848.9	-621.6	2.00	-2.00	0.00	180.00	
6,960.9	0.00	0.00	6,539.0	1,580.0	-1,848.9	-621.6	0.00	0.00	0.00	0.00	KOP - FAIRVIEW 3
7,861.0	90.00	90.54	7,112.0	2,153.0	-1,854.3	-48.6	10.00	10.00	10.06	90.54	LANDING PNT - FAIRVIEW 3
14,945.6	90.00	90.54	7,112.0	2,153.0	-1,921.0	7,035.7	0.00	0.00	0.00	105.49	BHL - FAIRVIEW 3

Database:	EDM 5000.1 Single User Db	Local Co-ordinate Reference:	Well FAIRVIEW 3
Company:	EXTRACTION OIL & GAS	TVD Reference:	KB-EST @ 4959.0usft
Project:	WELD COUNTY, COLORADO (NAD 83)	MD Reference:	KB-EST @ 4959.0usft
Site:	NW SW SEC. 5 T2N R68W 6th P.M.	North Reference:	True
Well:	FAIRVIEW 3	Survey Calculation Method:	Minimum Curvature
Wellbore:	ORIGINAL WELLBORE		
Design:	PROPOSAL #3		

Planned Survey

MD (usft)	Inc (°)	Azi (°)	TVD (usft)	SS (usft)	+N/-S (usft)	+E/-W (usft)	Vertical Section (usft)	Dogleg Rate (°/100usft)	Build Rate (°/100usft)	Turn Rate (°/100usft)
0.0	0.00	0.00	0.0	4,959.00	0.0	0.0	0.0	0.00	0.00	0.00
100.0	0.00	0.00	100.0	4,859.00	0.0	0.0	0.0	0.00	0.00	0.00
200.0	0.00	0.00	200.0	4,759.00	0.0	0.0	0.0	0.00	0.00	0.00
300.0	0.00	0.00	300.0	4,659.00	0.0	0.0	0.0	0.00	0.00	0.00
400.0	0.00	0.00	400.0	4,559.00	0.0	0.0	0.0	0.00	0.00	0.00
500.0	0.00	0.00	500.0	4,459.00	0.0	0.0	0.0	0.00	0.00	0.00
600.0	0.00	0.00	600.0	4,359.00	0.0	0.0	0.0	0.00	0.00	0.00
700.0	0.00	0.00	700.0	4,259.00	0.0	0.0	0.0	0.00	0.00	0.00
800.0	0.00	0.00	800.0	4,159.00	0.0	0.0	0.0	0.00	0.00	0.00
900.0	0.00	0.00	900.0	4,059.00	0.0	0.0	0.0	0.00	0.00	0.00
1,000.0	0.00	0.00	1,000.0	3,959.00	0.0	0.0	0.0	0.00	0.00	0.00
1,100.0	0.00	0.00	1,100.0	3,859.00	0.0	0.0	0.0	0.00	0.00	0.00
1,200.0	0.00	0.00	1,200.0	3,759.00	0.0	0.0	0.0	0.00	0.00	0.00
START NUDGE (2°/100ft BUR)										
1,300.0	0.00	0.00	1,300.0	3,659.00	0.0	0.0	0.0	0.00	0.00	0.00
1,400.0	2.00	198.58	1,400.0	3,559.02	-1.7	-0.6	-0.1	2.00	2.00	0.00
1,500.0	4.00	198.58	1,499.8	3,459.16	-6.6	-2.2	-0.4	2.00	2.00	0.00
9 5/8" SURFACE CASING										
1,500.2	4.00	198.58	1,500.0	3,459.00	-6.6	-2.2	-0.4	2.00	2.00	0.00
END OF TANGENT										
1,565.2	4.00	198.58	1,564.8	3,394.16	-10.9	-3.7	-0.7	0.00	0.00	0.00
1,600.0	4.70	198.58	1,599.6	3,359.42	-13.4	-4.5	-0.8	2.00	2.00	0.01
1,700.0	6.70	198.58	1,699.1	3,259.92	-22.8	-7.7	-1.4	2.00	2.00	0.00
1,800.0	8.70	198.58	1,798.2	3,160.83	-35.5	-12.0	-2.2	2.00	2.00	0.00
1,900.0	10.70	198.58	1,896.7	3,062.26	-51.5	-17.3	-3.1	2.00	2.00	0.00
2,000.0	12.70	198.58	1,994.7	2,964.35	-70.7	-23.8	-4.3	2.00	2.00	0.00
2,100.0	14.70	198.58	2,091.8	2,867.20	-93.2	-31.3	-5.7	2.00	2.00	0.00
2,200.0	16.70	198.58	2,188.1	2,770.93	-118.8	-40.0	-7.2	2.00	2.00	0.00
2,300.0	18.70	198.58	2,283.3	2,675.67	-147.6	-49.6	-9.0	2.00	2.00	0.00
2,400.0	20.70	198.58	2,377.5	2,581.53	-179.6	-60.4	-10.9	2.00	2.00	0.00
2,500.0	22.70	198.58	2,470.4	2,488.62	-214.6	-72.2	-13.1	2.00	2.00	0.00
2,600.0	24.70	198.58	2,561.9	2,397.06	-252.7	-85.0	-15.4	2.00	2.00	0.00
2,700.0	26.70	198.58	2,652.0	2,306.95	-293.8	-98.8	-17.9	2.00	2.00	0.00
EOB TO 27.46° INC										
2,738.2	27.46	198.58	2,686.1	2,272.93	-310.3	-104.3	-18.9	2.00	2.00	0.00
2,800.0	27.46	198.58	2,740.9	2,218.11	-337.3	-113.4	-20.6	0.00	0.00	0.00
2,900.0	27.46	198.58	2,829.6	2,129.38	-381.1	-128.1	-23.2	0.00	0.00	0.00
3,000.0	27.46	198.58	2,918.4	2,040.65	-424.8	-142.8	-25.9	0.00	0.00	0.00
3,100.0	27.46	198.58	3,007.1	1,951.92	-468.5	-157.5	-28.6	0.00	0.00	0.00
PARKMAN										
3,119.1	27.46	198.58	3,024.0	1,935.00	-476.8	-160.3	-29.1	0.00	0.00	0.00
3,200.0	27.46	198.58	3,095.8	1,863.19	-512.2	-172.2	-31.2	0.00	0.00	0.00
3,300.0	27.46	198.58	3,184.5	1,774.46	-555.9	-186.9	-33.9	0.00	0.00	0.00
3,400.0	27.46	198.58	3,273.3	1,685.73	-599.6	-201.6	-36.5	0.00	0.00	0.00
3,500.0	27.46	198.58	3,362.0	1,597.00	-643.3	-216.3	-39.2	0.00	0.00	0.00
3,600.0	27.46	198.58	3,450.7	1,508.27	-687.1	-231.0	-41.9	0.00	0.00	0.00
3,700.0	27.46	198.58	3,539.5	1,419.54	-730.8	-245.7	-44.5	0.00	0.00	0.00
3,800.0	27.46	198.58	3,628.2	1,330.81	-774.5	-260.4	-47.2	0.00	0.00	0.00
3,900.0	27.46	198.58	3,716.9	1,242.08	-818.2	-275.1	-49.9	0.00	0.00	0.00
4,000.0	27.46	198.58	3,805.6	1,153.35	-861.9	-289.8	-52.5	0.00	0.00	0.00
SUSSEX										
4,041.0	27.46	198.58	3,842.0	1,117.00	-879.8	-295.8	-53.6	0.00	0.00	0.00
4,100.0	27.46	198.58	3,894.4	1,064.62	-905.6	-304.5	-55.2	0.00	0.00	0.00

Planning Report



Database:	EDM 5000.1 Single User Db	Local Co-ordinate Reference:	Well FAIRVIEW 3
Company:	EXTRACTION OIL & GAS	TVD Reference:	KB-EST @ 4959.0usft
Project:	WELD COUNTY, COLORADO (NAD 83)	MD Reference:	KB-EST @ 4959.0usft
Site:	NW SW SEC. 5 T2N R68W 6th P.M.	North Reference:	True
Well:	FAIRVIEW 3	Survey Calculation Method:	Minimum Curvature
Wellbore:	ORIGINAL WELLBORE		
Design:	PROPOSAL #3		

Planned Survey

MD (usft)	Inc (°)	Azi (°)	TVD (usft)	SS (usft)	+N/-S (usft)	+E/-W (usft)	Vertical Section (usft)	Dogleg Rate (°/100usft)	Build Rate (°/100usft)	Turn Rate (°/100usft)
4,200.0	27.46	198.58	3,983.1	975.89	-949.4	-319.2	-57.9	0.00	0.00	0.00
4,300.0	27.46	198.58	4,071.8	887.16	-993.1	-333.9	-60.5	0.00	0.00	0.00
4,400.0	27.46	198.58	4,160.6	798.43	-1,036.8	-348.6	-63.2	0.00	0.00	0.00
4,500.0	27.46	198.58	4,249.3	709.70	-1,080.5	-363.3	-65.8	0.00	0.00	0.00
4,600.0	27.46	198.58	4,338.0	620.97	-1,124.2	-378.0	-68.5	0.00	0.00	0.00
SHANNON										
4,672.1	27.46	198.58	4,402.0	557.00	-1,155.7	-388.6	-70.4	0.00	0.00	0.00
4,700.0	27.46	198.58	4,426.8	532.24	-1,167.9	-392.7	-71.2	0.00	0.00	0.00
4,800.0	27.46	198.58	4,515.5	443.51	-1,211.6	-407.4	-73.8	0.00	0.00	0.00
4,900.0	27.46	198.58	4,604.2	354.78	-1,255.4	-422.1	-76.5	0.00	0.00	0.00
5,000.0	27.46	198.58	4,692.9	266.05	-1,299.1	-436.8	-79.2	0.00	0.00	0.00
5,100.0	27.46	198.58	4,781.7	177.32	-1,342.8	-451.5	-81.8	0.00	0.00	0.00
5,200.0	27.46	198.58	4,870.4	88.59	-1,386.5	-466.2	-84.5	0.00	0.00	0.00
5,300.0	27.46	198.58	4,959.1	-0.14	-1,430.2	-480.9	-87.2	0.00	0.00	0.00
5,400.0	27.46	198.58	5,047.9	-88.87	-1,473.9	-495.6	-89.8	0.00	0.00	0.00
5,500.0	27.46	198.58	5,136.6	-177.60	-1,517.7	-510.3	-92.5	0.00	0.00	0.00
END OF TANGENT										
5,557.7	27.46	198.58	5,187.8	-228.77	-1,542.9	-518.7	-94.0	0.00	0.00	0.00
5,600.0	26.62	198.58	5,225.5	-266.47	-1,561.1	-524.9	-95.1	2.00	-2.00	0.00
5,700.0	24.62	198.58	5,315.6	-356.63	-1,602.1	-538.6	-97.6	2.00	-2.00	0.00
5,800.0	22.62	198.58	5,407.3	-448.25	-1,640.1	-551.4	-99.9	2.00	-2.00	0.00
5,900.0	20.62	198.58	5,500.2	-541.21	-1,675.0	-563.1	-102.1	2.00	-2.00	0.00
6,000.0	18.62	198.58	5,594.4	-635.41	-1,706.8	-573.8	-104.0	2.00	-2.00	0.00
6,100.0	16.62	198.58	5,689.7	-730.71	-1,735.5	-583.5	-105.8	2.00	-2.00	0.00
6,200.0	14.62	198.58	5,786.0	-827.01	-1,761.0	-592.1	-107.3	2.00	-2.00	0.00
6,300.0	12.62	198.58	5,883.2	-924.20	-1,783.3	-599.6	-108.7	2.00	-2.00	0.00
6,400.0	10.62	198.58	5,981.1	-1,022.14	-1,802.4	-606.0	-109.8	2.00	-2.00	0.00
6,500.0	8.62	198.58	6,079.7	-1,120.73	-1,818.2	-611.3	-110.8	2.00	-2.00	0.00
6,600.0	6.62	198.58	6,178.8	-1,219.85	-1,830.8	-615.5	-111.6	2.00	-2.00	0.00
6,700.0	4.62	198.58	6,278.4	-1,319.36	-1,840.1	-618.7	-112.1	2.00	-2.00	0.00
6,800.0	2.62	198.58	6,378.2	-1,419.16	-1,846.1	-620.7	-112.5	2.00	-2.00	0.00
6,900.0	0.62	198.58	6,478.1	-1,519.11	-1,848.7	-621.6	-112.7	2.00	-2.00	0.00
EOD TO VERTICAL										
6,930.9	0.00	0.00	6,509.0	-1,550.00	-1,848.9	-621.6	-112.7	2.00	-2.00	0.00
KOP (10°/100ft BUR)										
6,960.9	0.00	0.00	6,539.0	-1,580.00	-1,848.9	-621.6	-112.7	0.00	0.00	0.00
7,000.0	3.91	90.54	6,578.1	-1,619.08	-1,848.9	-620.3	-111.4	10.00	10.00	0.00
SHARON SPRINGS										
7,069.5	10.86	90.54	6,647.0	-1,688.00	-1,849.0	-611.4	-102.7	10.00	10.00	0.00
7,100.0	13.91	90.54	6,676.7	-1,717.75	-1,849.1	-604.8	-96.4	10.00	10.00	0.00
NIORARA										
7,130.3	16.94	90.54	6,706.0	-1,747.00	-1,849.1	-596.7	-88.6	10.00	10.00	0.00
7,200.0	23.91	90.54	6,771.2	-1,812.23	-1,849.4	-572.5	-65.1	10.00	10.00	0.00
7,300.0	33.91	90.54	6,858.7	-1,899.66	-1,849.8	-524.2	-18.4	10.00	10.00	0.00
7,400.0	43.91	90.54	6,936.4	-1,977.38	-1,850.4	-461.4	42.2	10.00	10.00	0.00
7,500.0	53.91	90.54	7,002.0	-2,043.02	-1,851.1	-386.2	115.0	10.00	10.00	0.00
7,600.0	63.91	90.54	7,053.6	-2,094.60	-1,851.9	-300.7	197.7	10.00	10.00	0.00
FORT HAYS										
7,619.8	65.89	90.54	7,062.0	-2,103.00	-1,852.1	-282.7	215.1	10.00	10.00	0.00
7,700.0	73.91	90.54	7,089.5	-2,130.54	-1,852.8	-207.5	287.9	10.00	10.00	0.00
CODELL										
7,753.7	79.28	90.54	7,102.0	-2,143.00	-1,853.3	-155.2	338.4	10.00	10.00	0.00
7,800.0	83.90	90.54	7,108.8	-2,149.76	-1,853.7	-109.5	382.6	10.00	10.00	0.00

Planning Report



Database:	EDM 5000.1 Single User Db	Local Co-ordinate Reference:	Well FAIRVIEW 3
Company:	EXTRACTION OIL & GAS	TVD Reference:	KB-EST @ 4959.0usft
Project:	WELD COUNTY, COLORADO (NAD 83)	MD Reference:	KB-EST @ 4959.0usft
Site:	NW SW SEC. 5 T2N R68W 6th P.M.	North Reference:	True
Well:	FAIRVIEW 3	Survey Calculation Method:	Minimum Curvature
Wellbore:	ORIGINAL WELLBORE		
Design:	PROPOSAL #3		

Planned Survey										
MD (usft)	Inc (°)	Azi (°)	TVD (usft)	SS (usft)	+N/-S (usft)	+E/-W (usft)	Vertical Section (usft)	Dogleg Rate (°/100usft)	Build Rate (°/100usft)	Turn Rate (°/100usft)
LANDING PNT - FAIRVIEW 3 (P3)										
7,861.0	90.00	90.54	7,112.0	-2,153.00	-1,854.3	-48.6	441.5	10.00	10.00	0.00
7,900.0	90.00	90.54	7,112.0	-2,153.00	-1,854.6	-9.6	479.2	0.00	0.00	0.00
8,000.0	90.00	90.54	7,112.0	-2,153.00	-1,855.6	90.4	575.9	0.00	0.00	0.00
8,100.0	90.00	90.54	7,112.0	-2,153.00	-1,856.5	190.4	672.7	0.00	0.00	0.00
8,200.0	90.00	90.54	7,112.0	-2,152.99	-1,857.4	290.4	769.4	0.00	0.00	0.00
8,300.0	90.00	90.54	7,112.0	-2,152.99	-1,858.4	390.4	866.1	0.00	0.00	0.00
8,400.0	90.00	90.54	7,112.0	-2,152.99	-1,859.3	490.4	962.8	0.00	0.00	0.00
8,500.0	90.00	90.54	7,112.0	-2,152.99	-1,860.2	590.4	1,059.5	0.00	0.00	0.00
8,600.0	90.00	90.54	7,112.0	-2,152.99	-1,861.2	690.4	1,156.2	0.00	0.00	0.00
8,700.0	90.00	90.54	7,112.0	-2,152.99	-1,862.1	790.4	1,252.9	0.00	0.00	0.00
8,800.0	90.00	90.54	7,112.0	-2,152.98	-1,863.0	890.4	1,349.6	0.00	0.00	0.00
8,900.0	90.00	90.54	7,112.0	-2,152.98	-1,864.0	990.4	1,446.3	0.00	0.00	0.00
9,000.0	90.00	90.54	7,112.0	-2,152.98	-1,864.9	1,090.3	1,543.1	0.00	0.00	0.00
9,100.0	90.00	90.54	7,112.0	-2,152.98	-1,865.9	1,190.3	1,639.8	0.00	0.00	0.00
9,200.0	90.00	90.54	7,112.0	-2,152.98	-1,866.8	1,290.3	1,736.5	0.00	0.00	0.00
9,300.0	90.00	90.54	7,112.0	-2,152.98	-1,867.7	1,390.3	1,833.2	0.00	0.00	0.00
9,400.0	90.00	90.54	7,112.0	-2,152.98	-1,868.7	1,490.3	1,929.9	0.00	0.00	0.00
9,500.0	90.00	90.54	7,112.0	-2,152.98	-1,869.6	1,590.3	2,026.6	0.00	0.00	0.00
9,600.0	90.00	90.54	7,112.0	-2,152.98	-1,870.6	1,690.3	2,123.3	0.00	0.00	0.00
9,700.0	90.00	90.54	7,112.0	-2,152.97	-1,871.5	1,790.3	2,220.0	0.00	0.00	0.00
9,800.0	90.00	90.54	7,112.0	-2,152.97	-1,872.4	1,890.3	2,316.8	0.00	0.00	0.00
9,900.0	90.00	90.54	7,112.0	-2,152.97	-1,873.4	1,990.3	2,413.5	0.00	0.00	0.00
10,000.0	90.00	90.54	7,112.0	-2,152.97	-1,874.3	2,090.3	2,510.2	0.00	0.00	0.00
10,100.0	90.00	90.54	7,112.0	-2,152.97	-1,875.3	2,190.3	2,606.9	0.00	0.00	0.00
10,200.0	90.00	90.54	7,112.0	-2,152.97	-1,876.2	2,290.3	2,703.6	0.00	0.00	0.00
10,300.0	90.00	90.54	7,112.0	-2,152.97	-1,877.1	2,390.3	2,800.3	0.00	0.00	0.00
10,400.0	90.00	90.54	7,112.0	-2,152.97	-1,878.1	2,490.3	2,897.0	0.00	0.00	0.00
10,500.0	90.00	90.54	7,112.0	-2,152.97	-1,879.0	2,590.3	2,993.7	0.00	0.00	0.00
10,600.0	90.00	90.54	7,112.0	-2,152.97	-1,880.0	2,690.3	3,090.5	0.00	0.00	0.00
10,700.0	90.00	90.54	7,112.0	-2,152.97	-1,880.9	2,790.3	3,187.2	0.00	0.00	0.00
10,800.0	90.00	90.54	7,112.0	-2,152.97	-1,881.8	2,890.3	3,283.9	0.00	0.00	0.00
10,900.0	90.00	90.54	7,112.0	-2,152.97	-1,882.8	2,990.3	3,380.6	0.00	0.00	0.00
11,000.0	90.00	90.54	7,112.0	-2,152.97	-1,883.7	3,090.3	3,477.3	0.00	0.00	0.00
11,100.0	90.00	90.54	7,112.0	-2,152.97	-1,884.7	3,190.3	3,574.0	0.00	0.00	0.00
11,200.0	90.00	90.54	7,112.0	-2,152.97	-1,885.6	3,290.3	3,670.7	0.00	0.00	0.00
11,300.0	90.00	90.54	7,112.0	-2,152.97	-1,886.5	3,390.2	3,767.4	0.00	0.00	0.00
11,400.0	90.00	90.54	7,112.0	-2,152.97	-1,887.5	3,490.2	3,864.2	0.00	0.00	0.00
11,500.0	90.00	90.54	7,112.0	-2,152.97	-1,888.4	3,590.2	3,960.9	0.00	0.00	0.00
11,600.0	90.00	90.54	7,112.0	-2,152.97	-1,889.4	3,690.2	4,057.6	0.00	0.00	0.00
11,700.0	90.00	90.54	7,112.0	-2,152.97	-1,890.3	3,790.2	4,154.3	0.00	0.00	0.00
11,800.0	90.00	90.54	7,112.0	-2,152.97	-1,891.3	3,890.2	4,251.0	0.00	0.00	0.00
11,900.0	90.00	90.54	7,112.0	-2,152.97	-1,892.2	3,990.2	4,347.7	0.00	0.00	0.00
12,000.0	90.00	90.54	7,112.0	-2,152.97	-1,893.1	4,090.2	4,444.4	0.00	0.00	0.00
12,100.0	90.00	90.54	7,112.0	-2,152.97	-1,894.1	4,190.2	4,541.1	0.00	0.00	0.00
12,200.0	90.00	90.54	7,112.0	-2,152.97	-1,895.0	4,290.2	4,637.9	0.00	0.00	0.00
12,300.0	90.00	90.54	7,112.0	-2,152.97	-1,896.0	4,390.2	4,734.6	0.00	0.00	0.00
12,400.0	90.00	90.54	7,112.0	-2,152.97	-1,896.9	4,490.2	4,831.3	0.00	0.00	0.00
12,500.0	90.00	90.54	7,112.0	-2,152.97	-1,897.9	4,590.2	4,928.0	0.00	0.00	0.00
12,600.0	90.00	90.54	7,112.0	-2,152.97	-1,898.8	4,690.2	5,024.7	0.00	0.00	0.00
12,700.0	90.00	90.54	7,112.0	-2,152.97	-1,899.8	4,790.2	5,121.4	0.00	0.00	0.00
12,800.0	90.00	90.54	7,112.0	-2,152.97	-1,900.7	4,890.2	5,218.1	0.00	0.00	0.00
12,900.0	90.00	90.54	7,112.0	-2,152.97	-1,901.6	4,990.2	5,314.8	0.00	0.00	0.00
13,000.0	90.00	90.54	7,112.0	-2,152.97	-1,902.6	5,090.2	5,411.6	0.00	0.00	0.00

Database:	EDM 5000.1 Single User Db	Local Co-ordinate Reference:	Well FAIRVIEW 3
Company:	EXTRACTION OIL & GAS	TVD Reference:	KB-EST @ 4959.0usft
Project:	WELD COUNTY, COLORADO (NAD 83)	MD Reference:	KB-EST @ 4959.0usft
Site:	NW SW SEC. 5 T2N R68W 6th P.M.	North Reference:	True
Well:	FAIRVIEW 3	Survey Calculation Method:	Minimum Curvature
Wellbore:	ORIGINAL WELLBORE		
Design:	PROPOSAL #3		

Planned Survey										
MD (usft)	Inc (°)	Azi (°)	TVD (usft)	SS (usft)	+N/-S (usft)	+E/-W (usft)	Vertical Section (usft)	Dogleg Rate (°/100usft)	Build Rate (°/100usft)	Turn Rate (°/100usft)
13,100.0	90.00	90.54	7,112.0	-2,152.97	-1,903.5	5,190.2	5,508.3	0.00	0.00	0.00
13,200.0	90.00	90.54	7,112.0	-2,152.98	-1,904.5	5,290.2	5,605.0	0.00	0.00	0.00
13,300.0	90.00	90.54	7,112.0	-2,152.98	-1,905.4	5,390.2	5,701.7	0.00	0.00	0.00
13,400.0	90.00	90.54	7,112.0	-2,152.98	-1,906.4	5,490.2	5,798.4	0.00	0.00	0.00
13,500.0	90.00	90.54	7,112.0	-2,152.98	-1,907.3	5,590.1	5,895.1	0.00	0.00	0.00
13,600.0	90.00	90.54	7,112.0	-2,152.98	-1,908.3	5,690.1	5,991.8	0.00	0.00	0.00
13,700.0	90.00	90.54	7,112.0	-2,152.98	-1,909.2	5,790.1	6,088.6	0.00	0.00	0.00
13,800.0	90.00	90.54	7,112.0	-2,152.98	-1,910.2	5,890.1	6,185.3	0.00	0.00	0.00
13,900.0	90.00	90.54	7,112.0	-2,152.98	-1,911.1	5,990.1	6,282.0	0.00	0.00	0.00
14,000.0	90.00	90.54	7,112.0	-2,152.98	-1,912.0	6,090.1	6,378.7	0.00	0.00	0.00
14,100.0	90.00	90.54	7,112.0	-2,152.99	-1,913.0	6,190.1	6,475.4	0.00	0.00	0.00
14,200.0	90.00	90.54	7,112.0	-2,152.99	-1,913.9	6,290.1	6,572.1	0.00	0.00	0.00
14,300.0	90.00	90.54	7,112.0	-2,152.99	-1,914.9	6,390.1	6,668.8	0.00	0.00	0.00
14,400.0	90.00	90.54	7,112.0	-2,152.99	-1,915.8	6,490.1	6,765.6	0.00	0.00	0.00
14,500.0	90.00	90.54	7,112.0	-2,152.99	-1,916.8	6,590.1	6,862.3	0.00	0.00	0.00
14,600.0	90.00	90.54	7,112.0	-2,152.99	-1,917.7	6,690.1	6,959.0	0.00	0.00	0.00
14,700.0	90.00	90.54	7,112.0	-2,153.00	-1,918.7	6,790.1	7,055.7	0.00	0.00	0.00
14,800.0	90.00	90.54	7,112.0	-2,153.00	-1,919.6	6,890.1	7,152.4	0.00	0.00	0.00
14,900.0	90.00	90.54	7,112.0	-2,153.00	-1,920.6	6,990.1	7,249.1	0.00	0.00	0.00
BHL - FAIRVIEW 3 (P3)										
14,945.6	90.00	90.54	7,112.0	-2,153.00	-1,921.0	7,035.7	7,293.3	0.00	0.00	0.00

Formations						
MD (usft)	TVD (usft)	Name	Lithology	Dip (°)	Dip Direction (°)	
3,119.1	3,024.0	PARKMAN		0.00		
4,041.0	3,842.0	SUSSEX		0.00		
4,672.1	4,402.0	SHANNON		0.00		
7,069.5	6,647.0	SHARON SPRINGS		0.00		
7,130.3	6,706.0	NIOBRARA		0.00		
7,619.8	7,062.0	FORT HAYS		0.00		
7,753.7	7,102.0	CODELL		0.00		

Plan Annotations				
MD (usft)	TVD (usft)	Local Coordinates		Comment
		+N/-S (usft)	+E/-W (usft)	
1,300.0	1,300.0	0.0	0.0	START NUDGE (2°/100ft BUR)
1,500.2	1,500.0	-6.6	-2.2	9 5/8" SURFACE CASING
1,565.2	1,564.8	-10.9	-3.7	END OF TANGENT
2,738.2	2,686.1	-310.3	-104.3	EOB TO 27.46° INC
5,557.7	5,187.8	-1,542.9	-518.7	END OF TANGENT
6,930.9	6,509.0	-1,848.9	-621.6	EOD TO VERTICAL
6,960.9	6,539.0	-1,848.9	-621.6	KOP (10°/100ft BUR)
7,861.0	7,112.0	-1,854.3	-48.6	LANDING PNT - FAIRVIEW 3 (P3)
14,945.6	7,112.0	-1,921.0	7,035.7	BHL - FAIRVIEW 3 (P3)