

# **EXTRACTION OIL & GAS**

**WELD COUNTY, COLORADO (NAD 83)**

**SEC. 14 T2N R68W 6th P.M.**

**BYBEE 3**

**ORIGINAL WELLBORE**

**29 July, 2015**

**Plan: PROPOSAL #4**

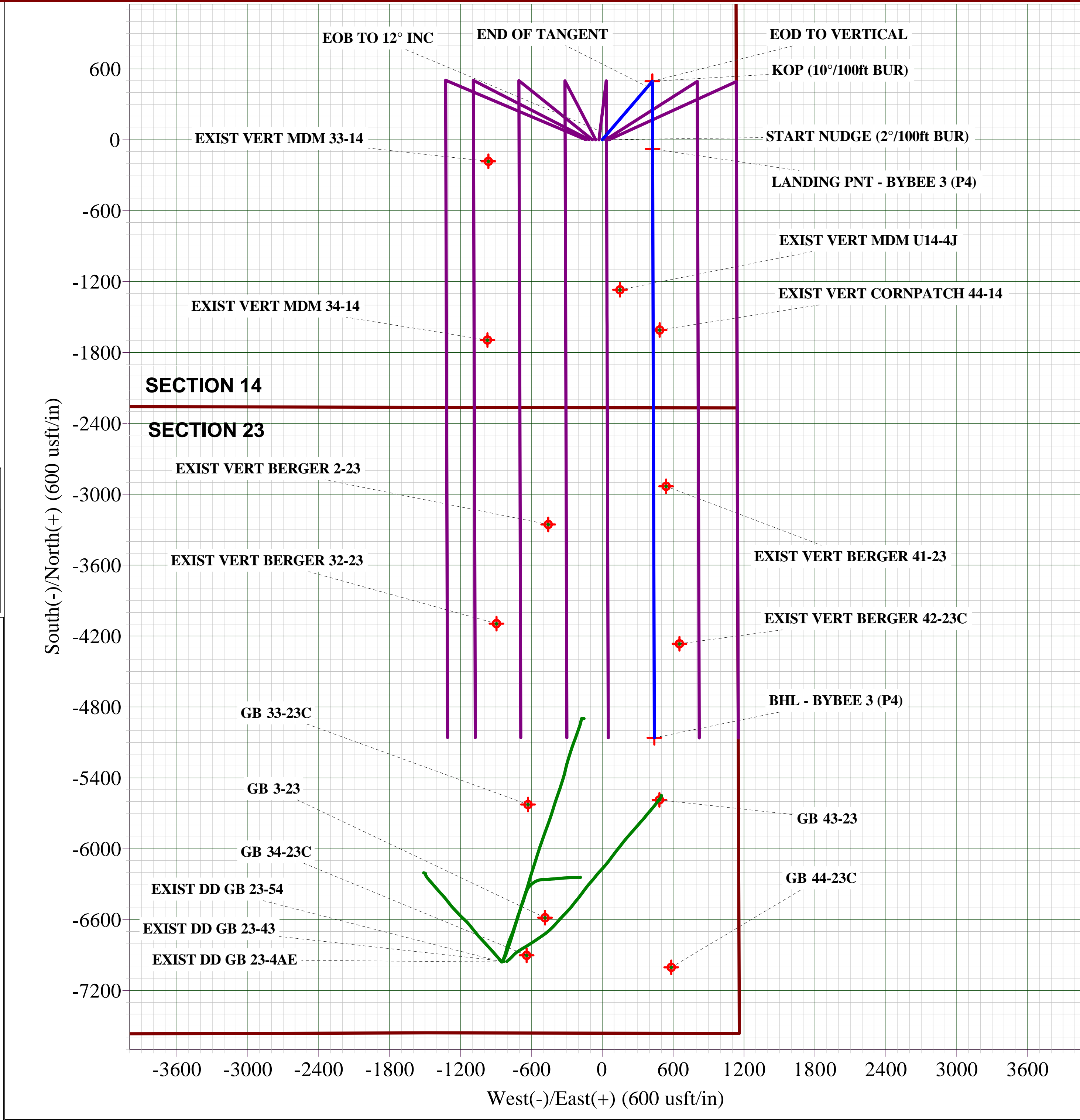
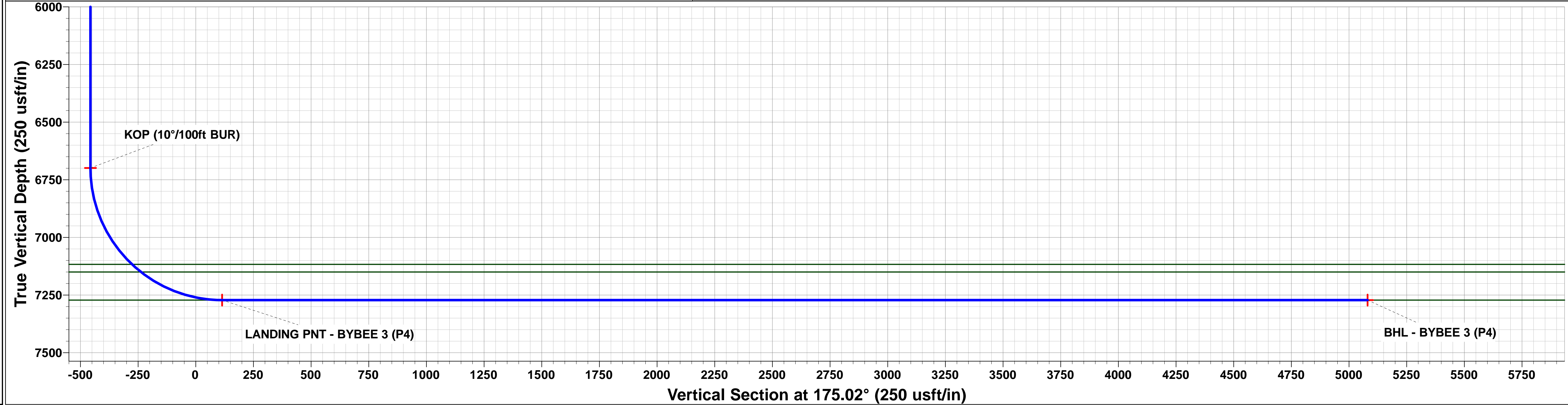
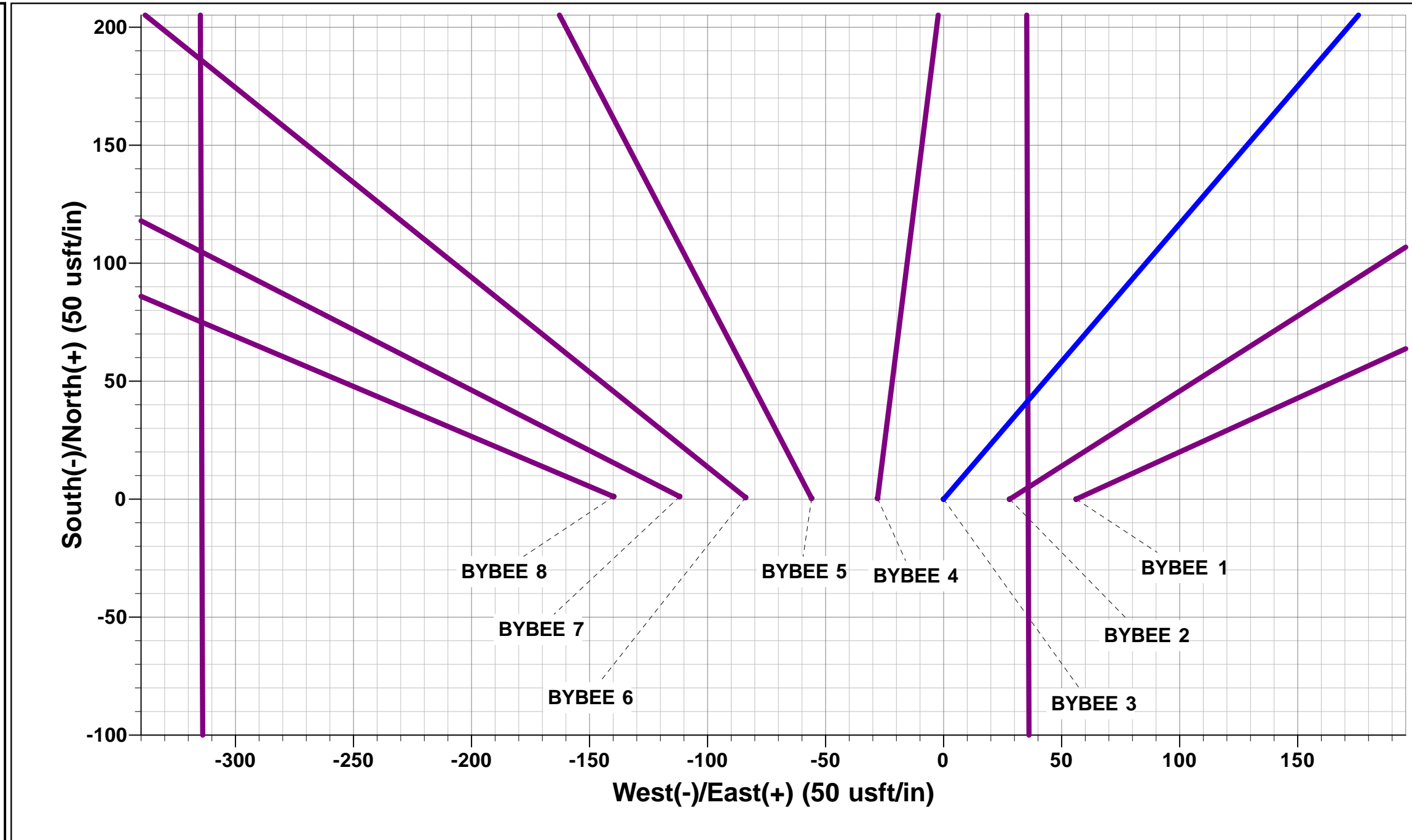
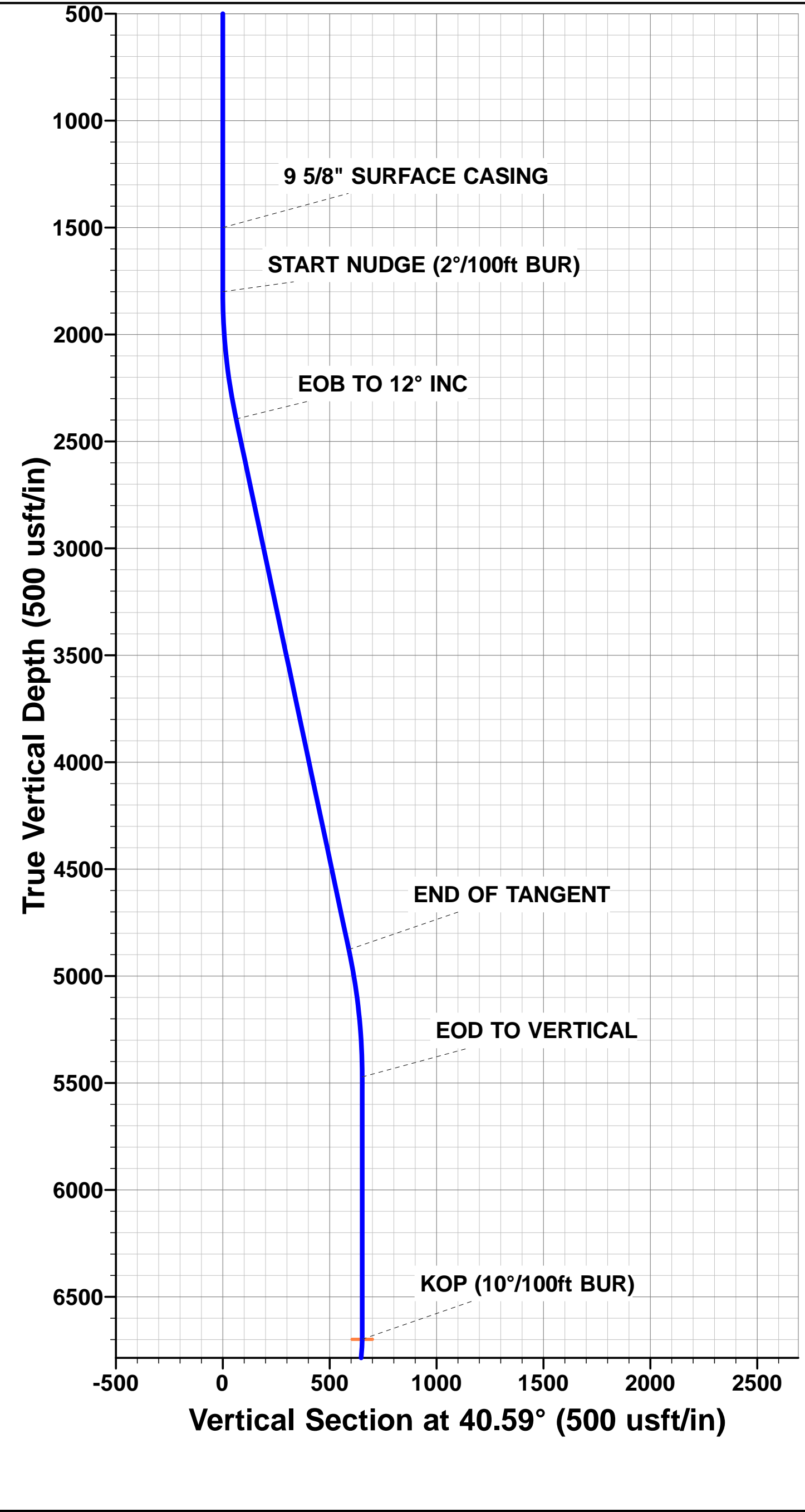




Project: WELD COUNTY, COLORADO (NAD 83)  
Site: SEC. 14 T2N R68W 6th P.M.  
Well: BYBEE 3  
Wellbore: ORIGINAL WELLBORE  
Design: PROPOSAL #4

ANNOTATIONS									FORMATION TOP DETAILS		
TVD	MD	Inc	Azi	+N/-S	+E/-W	VSect	Dep	Annotation	TVDPath	MDPath	Formation
1500.0	1500.0	0.00	0.00	0.0	0.0	0.0	0.0	9 5/8" SURFACE CASING	3559.0	3589.3	PARKMAN
1800.0	1800.0	0.00	0.00	0.0	0.0	0.0	0.0	START NUDGE (2°/100ft BUR)	4377.0	4425.6	SUSSEX
2395.4	2399.8	12.00	40.59	47.5	40.7	-43.8	62.6	EOB TO 12° INC	4933.0	4993.9	SHANNON
4876.7	4936.5	12.00	40.59	447.9	383.7	-412.9	589.8	END OF TANGENT	7117.0	7231.6	SHARON SPRINGS
5472.1	5536.2	0.00	40.59	495.4	424.4	-456.7	652.3	EOD TO VERTICAL	7150.0	7282.3	NIOBRARA
6699.0	6763.1	0.00	0.00	495.4	424.4	-456.7	652.3	KOP (10°/100ft BUR)	7272.0	7663.2	NIO B TARGET
7272.0	7663.2	90.00	179.83	-77.6	426.1	114.3	1225.3	LANDING PNT - BYBEE 3 (P4)			
7272.0	12646.7	90.00	179.83	-5061.1	440.7	5080.2	6208.8	BHL - BYBEE 3 (P4)			

WELLBORE TARGET DETAILS (LAT/LONG)					
Name	TVD	+N/-S	+E/-W	Latitude	Longitude
KOP - BYBEE 3 (P4)	6699.0	495.4	424.4	40.139021	-104.963555
BHL - BYBEE 3 (P4)	7272.0	-5061.1	440.7	40.123768	-104.963497
LANDING PNT - BYBEE 3 (P4)	7272.0	-77.6	426.1	40.137448	-104.963549



# Planning Report



<b>Database:</b>	EDM 5000.1 Single User Db	<b>Local Co-ordinate Reference:</b>	Well BYBEE 3
<b>Company:</b>	EXTRACTION OIL & GAS	<b>TVD Reference:</b>	KB-EST @ 4905.0usft
<b>Project:</b>	WELD COUNTY, COLORADO (NAD 83)	<b>MD Reference:</b>	KB-EST @ 4905.0usft
<b>Site:</b>	SEC. 14 T2N R68W 6th P.M.	<b>North Reference:</b>	True
<b>Well:</b>	BYBEE 3	<b>Survey Calculation Method:</b>	Minimum Curvature
<b>Wellbore:</b>	ORIGINAL WELLBORE		
<b>Design:</b>	PROPOSAL #4		

<b>Project</b>	WELD COUNTY, COLORADO (NAD 83)		
<b>Map System:</b>	US State Plane 1983	<b>System Datum:</b>	Mean Sea Level
<b>Geo Datum:</b>	North American Datum 1983		
<b>Map Zone:</b>	Colorado Northern Zone		Using geodetic scale factor

<b>Site</b>	SEC. 14 T2N R68W 6th P.M.		
<b>Site Position:</b>		<b>Northing:</b>	1,293,444.96 usft
<b>From:</b>	Lat/Long	<b>Easting:</b>	3,149,614.50 usft
<b>Position Uncertainty:</b>	0.0 usft	<b>Slot Radius:</b>	1.10000ft
		<b>Latitude:</b>	40.137661
		<b>Longitude:</b>	-104.964872
		<b>Grid Convergence:</b>	0.35 °

<b>Well</b>	BYBEE 3		
<b>Well Position</b>	<b>+N/-S</b>	0.0 usft	<b>Northing:</b>
	<b>+E/-W</b>	-56.2 usft	<b>Easting:</b>
<b>Position Uncertainty</b>	0.0 usft	<b>Wellhead Elevation:</b>	usft
		<b>Latitude:</b>	40.137661
		<b>Longitude:</b>	-104.965073
		<b>Ground Level:</b>	4,889.0 usft

<b>Wellbore</b>	ORIGINAL WELLBORE				
<b>Magnetics</b>	<b>Model Name</b>	<b>Sample Date</b>	<b>Declination (°)</b>	<b>Dip Angle (°)</b>	<b>Field Strength (nT)</b>
	IGRF2015	29/07/2015	8.49	66.66	52,448

<b>Design</b>	PROPOSAL #4			
<b>Audit Notes:</b>				
<b>Version:</b>	<b>Phase:</b>	PROTOTYPE	<b>Tie On Depth:</b>	0.0
<b>Vertical Section:</b>	<b>Depth From (TVD) (usft)</b>	<b>+N/-S (usft)</b>	<b>+E/-W (usft)</b>	<b>Direction (°)</b>
	0.0	0.0	0.0	175.02

<b>Plan Sections</b>											
MD (usft)	Inc (°)	Azi (°)	Vertical Depth	SS (usft)	+N/-S (usft)	+E/-W (usft)	Dogleg Rate (°/100usf)	Build Rate (°/100usf)	Turn Rate (°/100usf)	TFO (°)	Target
0.0	0.00	0.00	0.0	-4,905.0	0.0	0.0	0.00	0.00	0.00	0.00	
1,800.0	0.00	0.00	1,800.0	-3,105.0	0.0	0.0	0.00	0.00	0.00	0.00	
2,399.8	12.00	40.59	2,395.4	-2,509.6	47.5	40.7	2.00	2.00	0.00	40.59	
4,936.4	12.00	40.59	4,876.7	-28.3	447.9	383.7	0.00	0.00	0.00	0.00	
5,536.2	0.00	0.00	5,472.1	567.1	495.4	424.4	2.00	-2.00	0.00	180.00	
6,763.1	0.00	0.00	6,699.0	1,794.0	495.4	424.4	0.00	0.00	0.00	0.00	KOP - BYBEE 3 (P4
7,663.2	90.00	179.83	7,272.0	2,367.0	-77.6	426.1	10.00	10.00	19.98	179.83	LANDING PNT - BY
12,646.7	90.00	179.83	7,272.0	2,367.0	-5,061.1	440.7	0.00	0.00	0.00	43.10	BHL - BYBEE 3 (P4

## Planning Report



<b>Database:</b>	EDM 5000.1 Single User Db	<b>Local Co-ordinate Reference:</b>	Well BYBEE 3
<b>Company:</b>	EXTRACTION OIL & GAS	<b>TVD Reference:</b>	KB-EST @ 4905.0usft
<b>Project:</b>	WELD COUNTY, COLORADO (NAD 83)	<b>MD Reference:</b>	KB-EST @ 4905.0usft
<b>Site:</b>	SEC. 14 T2N R68W 6th P.M.	<b>North Reference:</b>	True
<b>Well:</b>	BYBEE 3	<b>Survey Calculation Method:</b>	Minimum Curvature
<b>Wellbore:</b>	ORIGINAL WELLBORE		
<b>Design:</b>	PROPOSAL #4		

Planned Survey										
MD (usft)	Inc (°)	Azi (°)	TVD (usft)	SS (usft)	+N/-S (usft)	+E/-W (usft)	Vertical Section (usft)	Dogleg Rate (°/100usft)	Build Rate (°/100usft)	Turn Rate (°/100usft)
0.0	0.00	0.00	0.0	4,905.00	0.0	0.0	0.0	0.00	0.00	0.00
100.0	0.00	0.00	100.0	4,805.00	0.0	0.0	0.0	0.00	0.00	0.00
200.0	0.00	0.00	200.0	4,705.00	0.0	0.0	0.0	0.00	0.00	0.00
300.0	0.00	0.00	300.0	4,605.00	0.0	0.0	0.0	0.00	0.00	0.00
400.0	0.00	0.00	400.0	4,505.00	0.0	0.0	0.0	0.00	0.00	0.00
500.0	0.00	0.00	500.0	4,405.00	0.0	0.0	0.0	0.00	0.00	0.00
600.0	0.00	0.00	600.0	4,305.00	0.0	0.0	0.0	0.00	0.00	0.00
700.0	0.00	0.00	700.0	4,205.00	0.0	0.0	0.0	0.00	0.00	0.00
800.0	0.00	0.00	800.0	4,105.00	0.0	0.0	0.0	0.00	0.00	0.00
900.0	0.00	0.00	900.0	4,005.00	0.0	0.0	0.0	0.00	0.00	0.00
1,000.0	0.00	0.00	1,000.0	3,905.00	0.0	0.0	0.0	0.00	0.00	0.00
1,100.0	0.00	0.00	1,100.0	3,805.00	0.0	0.0	0.0	0.00	0.00	0.00
1,200.0	0.00	0.00	1,200.0	3,705.00	0.0	0.0	0.0	0.00	0.00	0.00
1,300.0	0.00	0.00	1,300.0	3,605.00	0.0	0.0	0.0	0.00	0.00	0.00
1,400.0	0.00	0.00	1,400.0	3,505.00	0.0	0.0	0.0	0.00	0.00	0.00
<b>9 5/8" SURFACE CASING</b>										
1,500.0	0.00	0.00	1,500.0	3,405.00	0.0	0.0	0.0	0.00	0.00	0.00
1,600.0	0.00	0.00	1,600.0	3,305.00	0.0	0.0	0.0	0.00	0.00	0.00
1,700.0	0.00	0.00	1,700.0	3,205.00	0.0	0.0	0.0	0.00	0.00	0.00
<b>START NUDGE (2°/100ft BUR)</b>										
1,800.0	0.00	0.00	1,800.0	3,105.00	0.0	0.0	0.0	0.00	0.00	0.00
1,900.0	2.00	40.59	1,900.0	3,005.02	1.3	1.1	-1.2	2.00	2.00	0.00
2,000.0	4.00	40.59	1,999.8	2,905.16	5.3	4.5	-4.9	2.00	2.00	0.00
2,100.0	6.00	40.59	2,099.5	2,805.55	11.9	10.2	-11.0	2.00	2.00	0.00
2,200.0	8.00	40.59	2,198.7	2,706.30	21.2	18.1	-19.5	2.00	2.00	0.00
2,300.0	10.00	40.59	2,297.5	2,607.53	33.1	28.3	-30.5	2.00	2.00	0.00
<b>EOB TO 12" INC</b>										
2,399.8	12.00	40.59	2,395.4	2,509.57	47.5	40.7	-43.8	2.00	2.00	0.00
2,400.0	12.00	40.59	2,395.6	2,509.38	47.5	40.7	-43.8	0.00	0.00	0.00
2,500.0	12.00	40.59	2,493.4	2,411.56	63.3	54.3	-58.4	0.00	0.00	0.00
2,600.0	12.00	40.59	2,591.3	2,313.74	79.1	67.8	-72.9	0.00	0.00	0.00
2,700.0	12.00	40.59	2,689.1	2,215.93	94.9	81.3	-87.5	0.00	0.00	0.00
2,800.0	12.00	40.59	2,786.9	2,118.11	110.7	94.8	-102.0	0.00	0.00	0.00
2,900.0	12.00	40.59	2,884.7	2,020.30	126.5	108.3	-116.6	0.00	0.00	0.00
3,000.0	12.00	40.59	2,982.5	1,922.48	142.2	121.9	-131.1	0.00	0.00	0.00
3,100.0	12.00	40.59	3,080.3	1,824.66	158.0	135.4	-145.7	0.00	0.00	0.00
3,200.0	12.00	40.59	3,178.2	1,726.85	173.8	148.9	-160.2	0.00	0.00	0.00
3,300.0	12.00	40.59	3,276.0	1,629.03	189.6	162.4	-174.8	0.00	0.00	0.00
3,400.0	12.00	40.59	3,373.8	1,531.21	205.4	175.9	-189.3	0.00	0.00	0.00
3,500.0	12.00	40.59	3,471.6	1,433.40	221.2	189.5	-203.9	0.00	0.00	0.00
<b>PARKMAN</b>										
3,589.3	12.00	40.59	3,559.0	1,346.00	235.3	201.5	-216.9	0.00	0.00	0.00
3,600.0	12.00	40.59	3,569.4	1,335.58	237.0	203.0	-218.4	0.00	0.00	0.00
3,700.0	12.00	40.59	3,667.2	1,237.76	252.7	216.5	-233.0	0.00	0.00	0.00
3,800.0	12.00	40.59	3,765.1	1,139.95	268.5	230.0	-247.5	0.00	0.00	0.00
3,900.0	12.00	40.59	3,862.9	1,042.13	284.3	243.6	-262.1	0.00	0.00	0.00
4,000.0	12.00	40.59	3,960.7	944.32	300.1	257.1	-276.7	0.00	0.00	0.00
4,100.0	12.00	40.59	4,058.5	846.50	315.9	270.6	-291.2	0.00	0.00	0.00
4,200.0	12.00	40.59	4,156.3	748.68	331.7	284.1	-305.8	0.00	0.00	0.00
4,300.0	12.00	40.59	4,254.1	650.87	347.4	297.6	-320.3	0.00	0.00	0.00
4,400.0	12.00	40.59	4,351.9	553.05	363.2	311.2	-334.9	0.00	0.00	0.00
<b>SUSSEX</b>										
4,425.6	12.00	40.59	4,377.0	528.00	367.3	314.6	-338.6	0.00	0.00	0.00
4,500.0	12.00	40.59	4,449.8	455.23	379.0	324.7	-349.4	0.00	0.00	0.00

## Planning Report



<b>Database:</b>	EDM 5000.1 Single User Db	<b>Local Co-ordinate Reference:</b>	Well BYBEE 3
<b>Company:</b>	EXTRACTION OIL & GAS	<b>TVD Reference:</b>	KB-EST @ 4905.0usft
<b>Project:</b>	WELD COUNTY, COLORADO (NAD 83)	<b>MD Reference:</b>	KB-EST @ 4905.0usft
<b>Site:</b>	SEC. 14 T2N R68W 6th P.M.	<b>North Reference:</b>	True
<b>Well:</b>	BYBEE 3	<b>Survey Calculation Method:</b>	Minimum Curvature
<b>Wellbore:</b>	ORIGINAL WELLBORE		
<b>Design:</b>	PROPOSAL #4		

## Planned Survey

MD (usft)	Inc (°)	Azi (°)	TVD (usft)	SS (usft)	+N/-S (usft)	+E/-W (usft)	Vertical Section (usft)	Dogleg Rate (°/100usft)	Build Rate (°/100usft)	Turn Rate (°/100usft)
4,600.0	12.00	40.59	4,547.6	357.42	394.8	338.2	-364.0	0.00	0.00	0.00
4,700.0	12.00	40.59	4,645.4	259.60	410.6	351.7	-378.5	0.00	0.00	0.00
4,800.0	12.00	40.59	4,743.2	161.79	426.4	365.2	-393.1	0.00	0.00	0.00
4,900.0	12.00	40.59	4,841.0	63.97	442.1	378.8	-407.6	0.00	0.00	0.00
4,936.4	12.00	40.59	4,876.7	28.32	447.9	383.7	-412.9	0.00	0.00	0.00
<b>END OF TANGENT</b>										
<b>4,936.5</b>	<b>12.00</b>	<b>40.59</b>	<b>4,876.7</b>	<b>28.27</b>	<b>447.9</b>	<b>383.7</b>	<b>-412.9</b>	<b>0.00</b>	<b>0.00</b>	<b>0.00</b>
<b>SHANNON</b>										
<b>4,993.9</b>	<b>10.85</b>	<b>40.59</b>	<b>4,933.0</b>	<b>-28.00</b>	<b>456.5</b>	<b>391.1</b>	<b>-420.9</b>	<b>2.00</b>	<b>-2.00</b>	<b>0.00</b>
5,000.0	10.72	40.59	4,939.0	-33.99	457.4	391.8	-421.7	2.00	-2.00	0.00
5,100.0	8.72	40.59	5,037.5	-132.55	470.2	402.8	-433.5	2.00	-2.00	0.00
5,200.0	6.72	40.59	5,136.6	-231.63	480.4	411.6	-442.9	2.00	-2.00	0.00
5,300.0	4.72	40.59	5,236.1	-331.13	488.0	418.1	-449.9	2.00	-2.00	0.00
5,400.0	2.72	40.59	5,335.9	-430.91	492.9	422.3	-454.4	2.00	-2.00	0.00
5,500.0	0.72	40.59	5,435.9	-530.86	495.2	424.3	-456.6	2.00	-2.00	0.00
<b>EOD TO VERTICAL</b>										
<b>5,536.2</b>	<b>0.00</b>	<b>40.59</b>	<b>5,472.1</b>	<b>-567.06</b>	<b>495.4</b>	<b>424.4</b>	<b>-456.7</b>	<b>2.00</b>	<b>-2.00</b>	<b>0.00</b>
5,600.0	0.00	0.00	5,535.9	-630.86	495.4	424.4	-456.7	0.00	0.00	0.00
5,700.0	0.00	0.00	5,635.9	-730.86	495.4	424.4	-456.7	0.00	0.00	0.00
5,800.0	0.00	0.00	5,735.9	-830.86	495.4	424.4	-456.7	0.00	0.00	0.00
5,900.0	0.00	0.00	5,835.9	-930.86	495.4	424.4	-456.7	0.00	0.00	0.00
6,000.0	0.00	0.00	5,935.9	-1,030.86	495.4	424.4	-456.7	0.00	0.00	0.00
6,100.0	0.00	0.00	6,035.9	-1,130.86	495.4	424.4	-456.7	0.00	0.00	0.00
6,200.0	0.00	0.00	6,135.9	-1,230.86	495.4	424.4	-456.7	0.00	0.00	0.00
6,300.0	0.00	0.00	6,235.9	-1,330.86	495.4	424.4	-456.7	0.00	0.00	0.00
6,400.0	0.00	0.00	6,335.9	-1,430.86	495.4	424.4	-456.7	0.00	0.00	0.00
6,500.0	0.00	0.00	6,435.9	-1,530.86	495.4	424.4	-456.7	0.00	0.00	0.00
6,600.0	0.00	0.00	6,535.9	-1,630.86	495.4	424.4	-456.7	0.00	0.00	0.00
6,700.0	0.00	0.00	6,635.9	-1,730.86	495.4	424.4	-456.7	0.00	0.00	0.00
<b>KOP (10°/100ft BUR)</b>										
<b>6,763.1</b>	<b>0.00</b>	<b>0.00</b>	<b>6,699.0</b>	<b>-1,793.96</b>	<b>495.4</b>	<b>424.4</b>	<b>-456.7</b>	<b>0.00</b>	<b>0.00</b>	<b>0.00</b>
6,800.0	3.69	179.83	6,735.8	-1,830.84	494.2	424.4	-455.5	9.99	9.99	0.00
6,900.0	13.69	179.83	6,834.6	-1,929.56	479.1	424.4	-440.5	10.00	10.00	0.00
7,000.0	23.68	179.83	6,929.2	-2,024.17	447.1	424.5	-408.6	10.00	10.00	0.00
7,100.0	33.68	179.83	7,016.8	-2,111.79	399.2	424.7	-360.9	10.00	10.00	0.00
7,200.0	43.68	179.83	7,094.8	-2,189.75	336.8	424.9	-298.7	10.00	10.00	0.00
<b>SHARON SPRINGS</b>										
<b>7,231.6</b>	<b>46.84</b>	<b>179.83</b>	<b>7,117.0</b>	<b>-2,212.00</b>	<b>314.3</b>	<b>424.9</b>	<b>-276.3</b>	<b>10.00</b>	<b>10.00</b>	<b>0.00</b>
<b>NIOBRARA</b>										
<b>7,282.3</b>	<b>51.91</b>	<b>179.83</b>	<b>7,150.0</b>	<b>-2,245.00</b>	<b>275.9</b>	<b>425.1</b>	<b>-237.9</b>	<b>10.00</b>	<b>10.00</b>	<b>0.00</b>
7,300.0	53.68	179.83	7,160.7	-2,255.69	261.8	425.1	-223.9	10.00	10.00	0.00
7,400.0	63.68	179.83	7,212.6	-2,307.60	176.5	425.4	-138.9	10.00	10.00	0.00
7,500.0	73.68	179.83	7,248.9	-2,343.91	83.4	425.6	-46.2	10.00	10.00	0.00
7,600.0	83.68	179.83	7,268.5	-2,363.52	-14.5	425.9	51.4	10.00	10.00	0.00
<b>LANDING PNT - BYBEE 3 (P4) - NIO B TARGET</b>										
<b>7,663.2</b>	<b>90.00</b>	<b>179.83</b>	<b>7,272.0</b>	<b>-2,367.00</b>	<b>-77.6</b>	<b>426.1</b>	<b>114.2</b>	<b>10.00</b>	<b>10.00</b>	<b>0.00</b>
7,700.0	90.00	179.83	7,272.0	-2,367.00	-114.4	426.2	150.9	0.00	0.00	0.00
7,800.0	90.00	179.83	7,272.0	-2,367.01	-214.4	426.5	250.6	0.00	0.00	0.00
7,900.0	90.00	179.83	7,272.0	-2,367.01	-314.4	426.8	350.2	0.00	0.00	0.00
8,000.0	90.00	179.83	7,272.0	-2,367.02	-414.4	427.1	449.9	0.00	0.00	0.00
8,100.0	90.00	179.83	7,272.0	-2,367.02	-514.4	427.4	549.5	0.00	0.00	0.00
8,200.0	90.00	179.83	7,272.0	-2,367.03	-614.4	427.7	649.2	0.00	0.00	0.00
8,300.0	90.00	179.83	7,272.0	-2,367.03	-714.4	428.0	748.8	0.00	0.00	0.00



# Planning Report



<b>Database:</b>	EDM 5000.1 Single User Db	<b>Local Co-ordinate Reference:</b>	Well BYBEE 3
<b>Company:</b>	EXTRACTION OIL & GAS	<b>TVD Reference:</b>	KB-EST @ 4905.0usft
<b>Project:</b>	WELD COUNTY, COLORADO (NAD 83)	<b>MD Reference:</b>	KB-EST @ 4905.0usft
<b>Site:</b>	SEC. 14 T2N R68W 6th P.M.	<b>North Reference:</b>	True
<b>Well:</b>	BYBEE 3	<b>Survey Calculation Method:</b>	Minimum Curvature
<b>Wellbore:</b>	ORIGINAL WELLBORE		
<b>Design:</b>	PROPOSAL #4		

Planned Survey										
MD (usft)	Inc (°)	Azi (°)	TVD (usft)	SS (usft)	+N/-S (usft)	+E/-W (usft)	Vertical Section (usft)	Dogleg Rate (°/100usft)	Build Rate (°/100usft)	Turn Rate (°/100usft)
8,400.0	90.00	179.83	7,272.0	-2,367.03	-814.4	428.3	848.5	0.00	0.00	0.00
8,500.0	90.00	179.83	7,272.0	-2,367.04	-914.4	428.6	948.1	0.00	0.00	0.00
8,600.0	90.00	179.83	7,272.0	-2,367.04	-1,014.4	428.9	1,047.8	0.00	0.00	0.00
8,700.0	90.00	179.83	7,272.0	-2,367.04	-1,114.4	429.2	1,147.4	0.00	0.00	0.00
8,800.0	90.00	179.83	7,272.0	-2,367.05	-1,214.4	429.5	1,247.1	0.00	0.00	0.00
8,900.0	90.00	179.83	7,272.1	-2,367.05	-1,314.4	429.8	1,346.7	0.00	0.00	0.00
9,000.0	90.00	179.83	7,272.1	-2,367.05	-1,414.4	430.1	1,446.4	0.00	0.00	0.00
9,100.0	90.00	179.83	7,272.1	-2,367.06	-1,514.4	430.4	1,546.0	0.00	0.00	0.00
9,200.0	90.00	179.83	7,272.1	-2,367.06	-1,614.4	430.7	1,645.7	0.00	0.00	0.00
9,300.0	90.00	179.83	7,272.1	-2,367.06	-1,714.4	431.0	1,745.3	0.00	0.00	0.00
9,400.0	90.00	179.83	7,272.1	-2,367.06	-1,814.4	431.3	1,845.0	0.00	0.00	0.00
9,500.0	90.00	179.83	7,272.1	-2,367.06	-1,914.4	431.6	1,944.6	0.00	0.00	0.00
9,600.0	90.00	179.83	7,272.1	-2,367.06	-2,014.4	431.9	2,044.3	0.00	0.00	0.00
9,700.0	90.00	179.83	7,272.1	-2,367.07	-2,114.4	432.2	2,143.9	0.00	0.00	0.00
9,800.0	90.00	179.83	7,272.1	-2,367.07	-2,214.4	432.4	2,243.5	0.00	0.00	0.00
9,900.0	90.00	179.83	7,272.1	-2,367.07	-2,314.4	432.7	2,343.2	0.00	0.00	0.00
10,000.0	90.00	179.83	7,272.1	-2,367.07	-2,414.4	433.0	2,442.8	0.00	0.00	0.00
10,100.0	90.00	179.83	7,272.1	-2,367.07	-2,514.4	433.3	2,542.5	0.00	0.00	0.00
10,200.0	90.00	179.83	7,272.1	-2,367.07	-2,614.4	433.6	2,642.1	0.00	0.00	0.00
10,300.0	90.00	179.83	7,272.1	-2,367.07	-2,714.4	433.9	2,741.8	0.00	0.00	0.00
10,400.0	90.00	179.83	7,272.1	-2,367.07	-2,814.4	434.2	2,841.4	0.00	0.00	0.00
10,500.0	90.00	179.83	7,272.1	-2,367.07	-2,914.4	434.5	2,941.1	0.00	0.00	0.00
10,600.0	90.00	179.83	7,272.1	-2,367.07	-3,014.4	434.8	3,040.7	0.00	0.00	0.00
10,700.0	90.00	179.83	7,272.1	-2,367.06	-3,114.4	435.1	3,140.4	0.00	0.00	0.00
10,800.0	90.00	179.83	7,272.1	-2,367.06	-3,214.4	435.4	3,240.0	0.00	0.00	0.00
10,900.0	90.00	179.83	7,272.1	-2,367.06	-3,314.4	435.7	3,339.7	0.00	0.00	0.00
11,000.0	90.00	179.83	7,272.1	-2,367.06	-3,414.4	436.0	3,439.3	0.00	0.00	0.00
11,100.0	90.00	179.83	7,272.1	-2,367.06	-3,514.4	436.3	3,539.0	0.00	0.00	0.00
11,200.0	90.00	179.83	7,272.1	-2,367.06	-3,614.4	436.5	3,638.6	0.00	0.00	0.00
11,300.0	90.00	179.83	7,272.1	-2,367.05	-3,714.4	436.8	3,738.3	0.00	0.00	0.00
11,400.0	90.00	179.83	7,272.1	-2,367.05	-3,814.4	437.1	3,837.9	0.00	0.00	0.00
11,500.0	90.00	179.83	7,272.0	-2,367.05	-3,914.4	437.4	3,937.6	0.00	0.00	0.00
11,600.0	90.00	179.83	7,272.0	-2,367.05	-4,014.4	437.7	4,037.2	0.00	0.00	0.00
11,700.0	90.00	179.83	7,272.0	-2,367.04	-4,114.4	438.0	4,136.9	0.00	0.00	0.00
11,800.0	90.00	179.83	7,272.0	-2,367.04	-4,214.4	438.3	4,236.5	0.00	0.00	0.00
11,900.0	90.00	179.83	7,272.0	-2,367.03	-4,314.4	438.6	4,336.2	0.00	0.00	0.00
12,000.0	90.00	179.83	7,272.0	-2,367.03	-4,414.4	438.9	4,435.8	0.00	0.00	0.00
12,100.0	90.00	179.83	7,272.0	-2,367.03	-4,514.4	439.2	4,535.4	0.00	0.00	0.00
12,200.0	90.00	179.83	7,272.0	-2,367.02	-4,614.4	439.4	4,635.1	0.00	0.00	0.00
12,300.0	90.00	179.83	7,272.0	-2,367.02	-4,714.4	439.7	4,734.7	0.00	0.00	0.00
12,400.0	90.00	179.83	7,272.0	-2,367.01	-4,814.4	440.0	4,834.4	0.00	0.00	0.00
12,500.0	90.00	179.83	7,272.0	-2,367.01	-4,914.4	440.3	4,934.0	0.00	0.00	0.00
12,600.0	90.00	179.83	7,272.0	-2,367.00	-5,014.4	440.6	5,033.7	0.00	0.00	0.00
<b>BHL - BYBEE 3 (P4)</b>										
<b>12,646.7</b>	<b>90.00</b>	<b>179.83</b>	<b>7,272.0</b>	<b>-2,367.00</b>	<b>-5,061.1</b>	<b>440.7</b>	<b>5,080.2</b>	<b>0.00</b>	<b>0.00</b>	<b>0.00</b>

<b>Database:</b>	EDM 5000.1 Single User Db	<b>Local Co-ordinate Reference:</b>	Well BYBEE 3
<b>Company:</b>	EXTRACTION OIL & GAS	<b>TVD Reference:</b>	KB-EST @ 4905.0usft
<b>Project:</b>	WELD COUNTY, COLORADO (NAD 83)	<b>MD Reference:</b>	KB-EST @ 4905.0usft
<b>Site:</b>	SEC. 14 T2N R68W 6th P.M.	<b>North Reference:</b>	True
<b>Well:</b>	BYBEE 3	<b>Survey Calculation Method:</b>	Minimum Curvature
<b>Wellbore:</b>	ORIGINAL WELLBORE		
<b>Design:</b>	PROPOSAL #4		

Formations					
MD (usft)	TVD (usft)	Name	Lithology	Dip (°)	Dip Direction (°)
3,589.3	3,559.0	PARKMAN		0.00	
4,425.6	4,377.0	SUSSEX		0.00	
4,993.9	4,933.0	SHANNON		0.00	
7,231.6	7,117.0	SHARON SPRINGS		0.00	
7,282.3	7,150.0	NIOBRARA		0.00	
7,663.2	7,272.0	NIO B TARGET		0.00	

Plan Annotations				
MD (usft)	TVD (usft)	Local Coordinates		Comment
		+N/-S (usft)	+E/-W (usft)	
1,500.0	1,500.0	0.0	0.0	9 5/8" SURFACE CASING
1,800.0	1,800.0	0.0	0.0	START NUDGE (2°/100ft BUR)
2,399.8	2,395.4	47.5	40.7	EOB TO 12° INC
4,936.5	4,876.7	447.9	383.7	END OF TANGENT
5,536.2	5,472.1	495.4	424.4	EOD TO VERTICAL
6,763.1	6,699.0	495.4	424.4	KOP (10°/100ft BUR)
7,663.2	7,272.0	-77.6	426.1	LANDING PNT - BYBEE 3 (P4)
12,646.7	7,272.0	-5,061.1	440.7	BHL - BYBEE 3 (P4)